

O.D.O.T. DISTRICT 2 SURVEY OFFICE (USE ONLY)

PERSONNEL

REFERENCE NO. 17 C

SHEET 8 OF 19

NOTES RHOADES

DATE 7/25/18

ROUTE US 6

H.C. O'DONNELL

WEATHER SUNNY

COUNTY WILLIAMS

R.C. TRENKA

TEMP. 75°

TOWNSHIP PULASKI

DWG BY NIESE PID 95792

SECTION 34

T 6 N R 3 E

TYPE MONUMENT LG.R.R.SPIKE

~~ON SURFACE~~ - BELOW 4 1/2"

OFFSET  $\varnothing$  PAVEMENT 0.2' LT : ~~RT~~

11.3' TO LT EDGE PAVEMENT

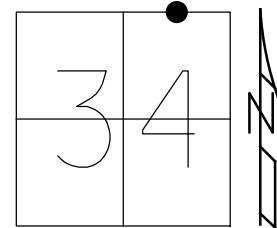
STATION: 837+62.08

HORZ.DATUM: NAD83(2011)

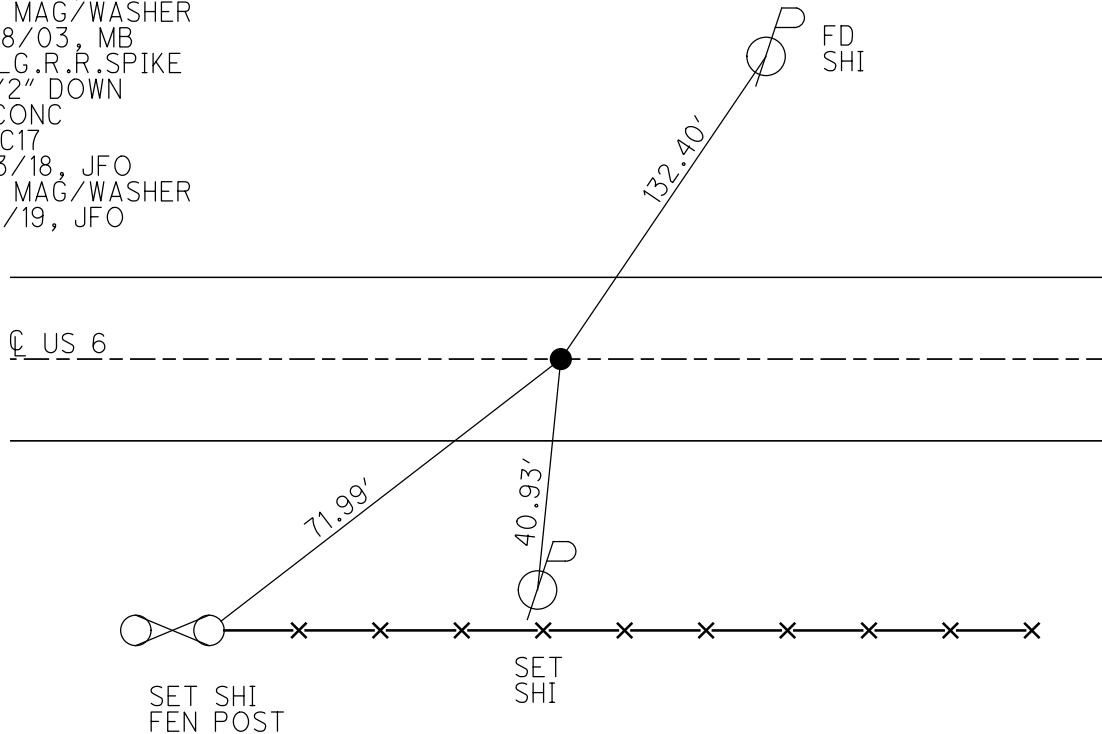
GEOID: 2012A

GRID: NORTHING: 653026.741

EASTING: 1419274.255



RECORD:  
 FD LG.R.R.SPIKE  
 4" DOWN  
 5/30/86  
 FD P.K./WASHER  
 4/25/02, MB  
 SET MAG/WASHER  
 8/28/03, MB  
 FD LG.R.R.SPIKE  
 4 1/2" DOWN  
 IN CONC  
 REFC17  
 2/13/18, JFO  
 SET MAG/WASHER  
 11/7/19, JFO



# O.D.O.T. DISTRICT 2 SURVEY OFFICE

PERSONNEL

REFERENCE NO. 17-C

SHEET 8 OF 20

NOTES Barnhisel

H.C. Conterbury

R.C. Moser

DATE 4-25-02

WEATHER clear/windy

TEMP. +50°

ROUTE U.S. 6

COUNTY WILLIAMS

TOWNSHIP PULASKI

SECTION 34

T6 N R 3 E

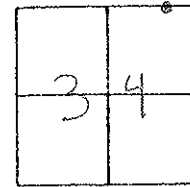
TYPE MONUMENT PK + Washer

ON SURFACE - ~~BELOW~~ on surface

LEFT - ~~C~~ PAV'T. - RIGHT 0.2' LT

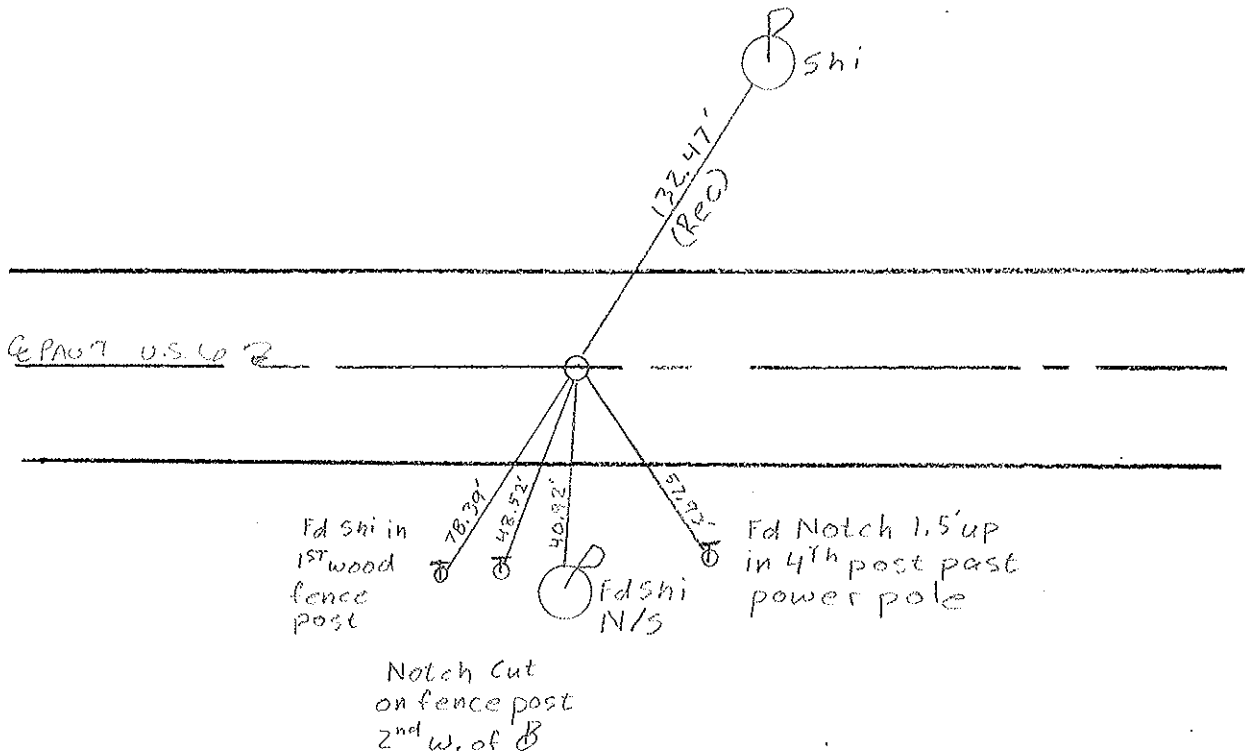
11.3' TO LT EDGE PAVEMENT

S.L.M. 838+14



Record: 5-30-86  
T.O. U6 RR. SPIKE 4" DOWN

SET MAG NAIL & WASHER  
8-28-03  
M3



# O.D.O.T. DISTRICT 2 SURVEY OFFICE

PERSONNEL

REFERENCE NO. 17-C

SHEET 9 OF 22

NOTES VAN DUSEN

H.C. KUSZ

R.C. McGORMICK

DATE 20 July 1992

WEATHER cloudy

TEMP. 75°

ROUTE US 6

COUNTY Williams

TOWNSHIP Pulaski

SECTION 34

T 6 N R 3 E

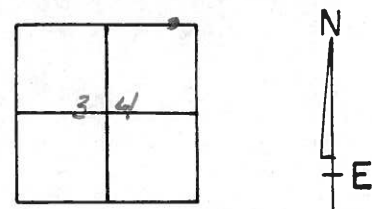
TYPE MONUMENT PK & WASHER

~~ON~~ SURFACE - BELOW YES

LEFT- & PAV'T. - RIGHT

TO EDGE PAVEMENT

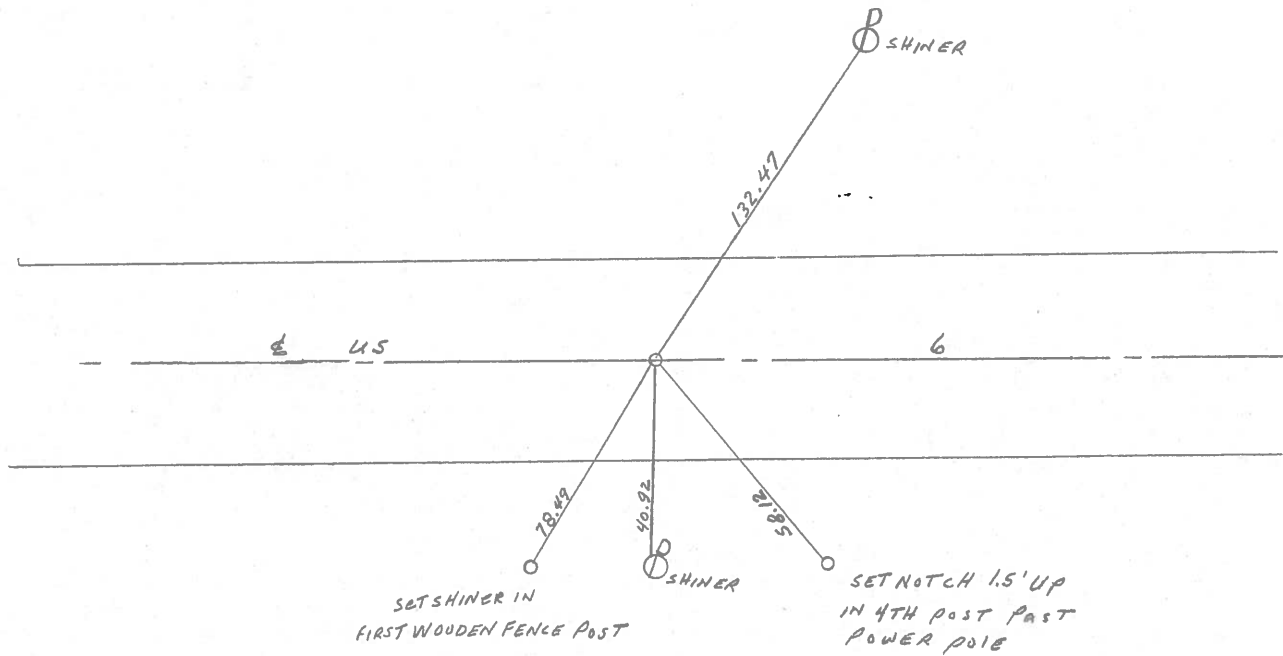
S.L.M. 838+14



Fd. RR Spk in center  
of 24' conc. Pavmt.

Fd. RR. Spk 4" DEEP  
5-30-86

SET PK & WASHER  
10-26-92  
MB



Q.D.O.T. DISTRICT 2 SURVEY OFFICE

SHEET 10 OF

County Williams S.R. #6

Date 7 May 84

Township Polaski

Weather Cloudy

Section 34

Temp. 60°

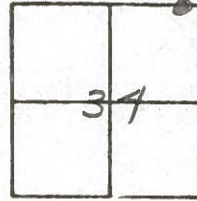
T N, R E

Personnel I. Stone

P. Nusser

R. Michalak

D. Curtis



837 + 20

REF. NO. 17-B

17-C



Shiner

132.47'

#6

40.91'

Shiner

Fd. RR Spk. in center of  
24' Con. put.

115.37'

84.24'

Fd. R.R. Spk. 4" Deep -  
5-30-86

#5

Shiner in  
Mail Box  
post

60 d nail in NWS  
14" Tree

PERSONNEL TITLE PERSONNEL TITLE

Red Beach  
W. Knape

COUNTY Williams DATE Dec 1975

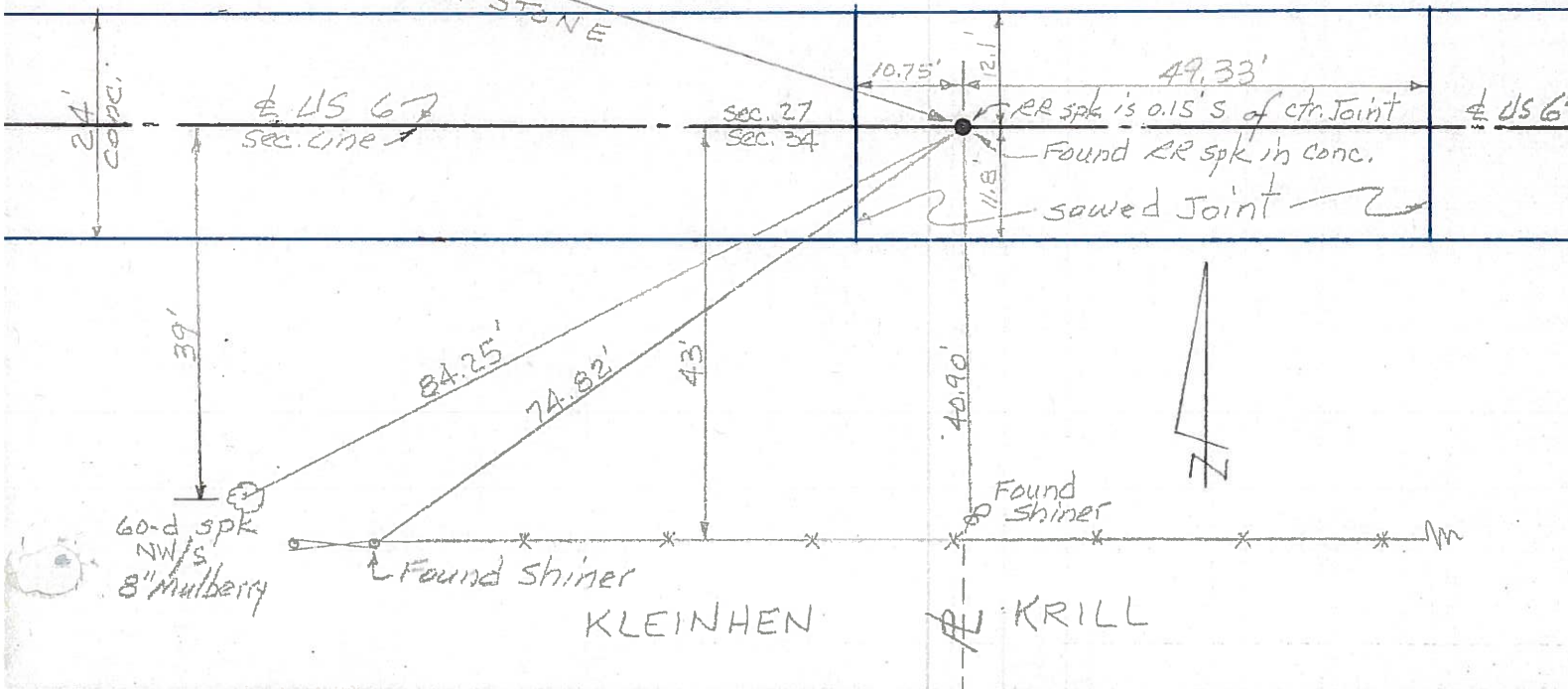
S. R. US 6 WEATHER

SEC. PULASKI Twp TEMP.

DESCRIPTION CONTROL POINTS JOB NO.

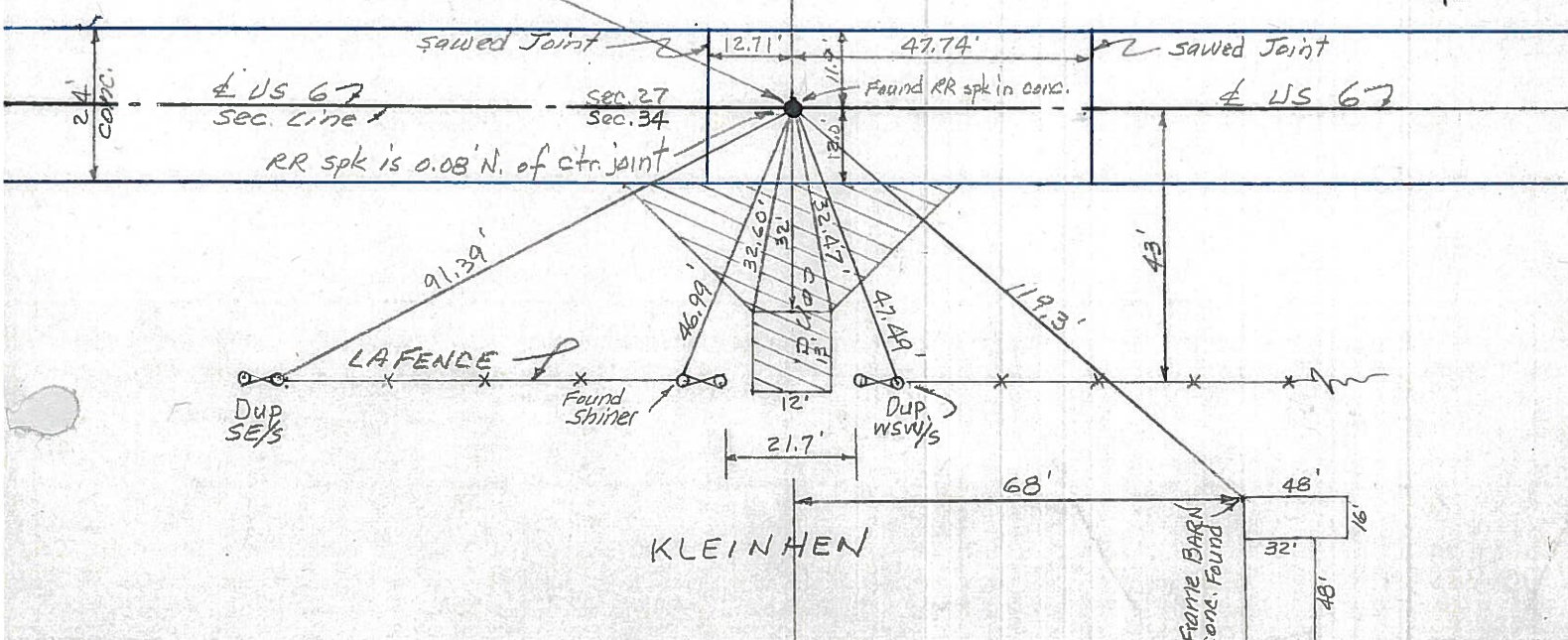
**17-C**

RR spk allegedly over R<sub>2</sub> STONE  
PI sta. 258+00.26



**17-B**

HOENE a<sub>tr</sub>. Line  
BUBENKO  
Found shiner  
LAFENCE  
POT sta. 247+80.60  
a<sub>tr</sub>. corner (RR spk)



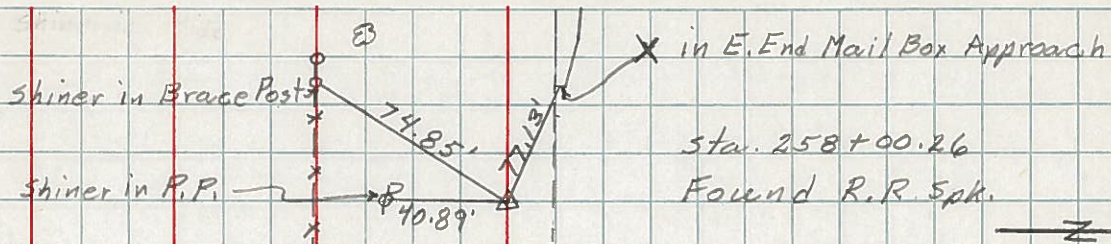
| PERSONNEL  | TITLE | PERSONNEL | TITLE |
|------------|-------|-----------|-------|
| Hoover     |       | Young     |       |
| Ruffer     |       | Mohler    |       |
| Hoff       |       |           |       |
| Delventhal |       |           |       |

COUNTY Williams DATE 12-8-60  
 S. R. 6 WEATHER Cloudy  
 SEC. \_\_\_\_\_ TEMP. 28

DESCRIPTION \_\_\_\_\_ LEFT \_\_\_\_\_ CENTER LINE \_\_\_\_\_ RIGHT \_\_\_\_\_ JOB NO. \_\_\_\_\_

120.

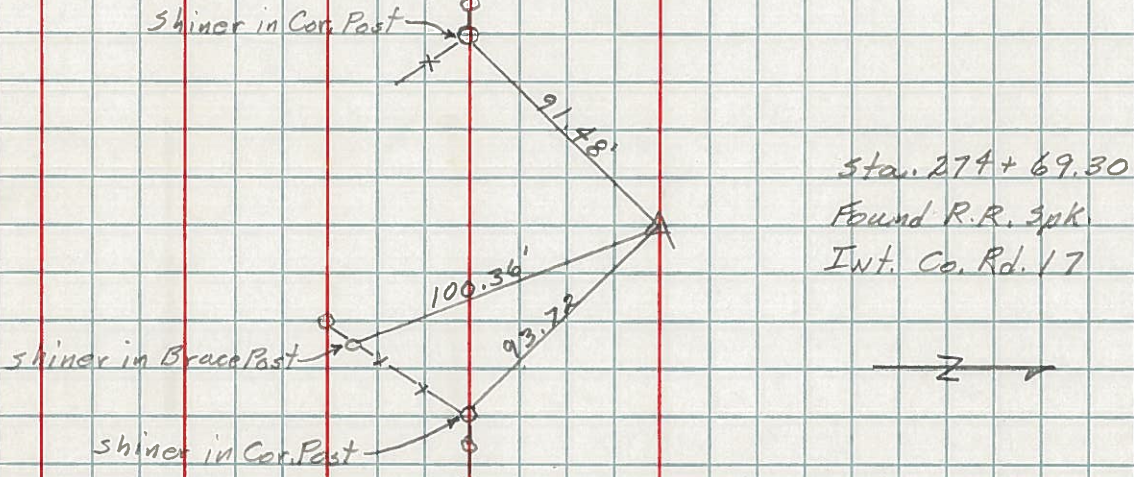
(17-C)



Sta. 258+00.26  
 Found R.R. Spk.

121.

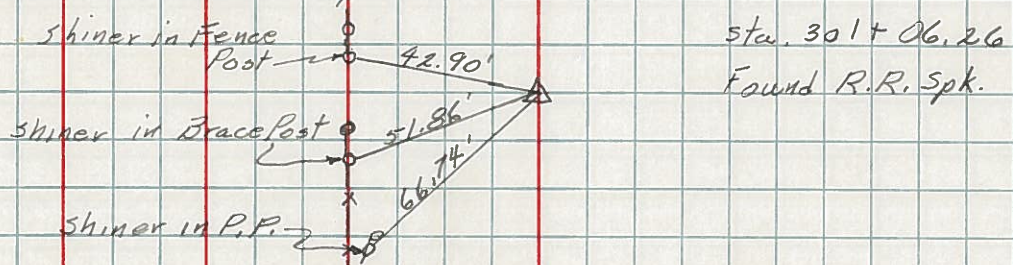
(18)



Sta. 274+69.30  
 Found R.R. Spk.  
 Int. Co. Rd. 17

122.

(18-A)



Sta. 301+06.26  
 Found R.R. Spk.

PERSONNEL TITLE PERSONNEL TITLE

Louys

COUNTY Wi.

DATE 2-27-58

S. R. 6

WEATHER

SEC Relocation over Rt # 384

TEMP. 40°

DESCRIPTION Witnesses to Control Points

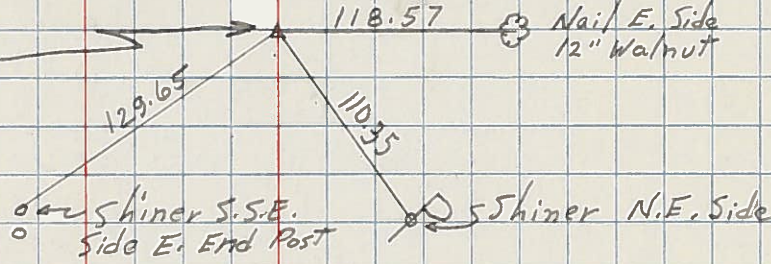
124 LEFT CENTER LINE RIGHT JOB NO.

R/w only

P.I. sta. 340+51.30

19-A

$\Delta = 0^{\circ}01'20''$  LT.  
(Point is 0.20' LT. OF  
a STR. LINE BETWEEN  
1/2 Mile POINTS)  
(Fd Stone R.R. SPK.)



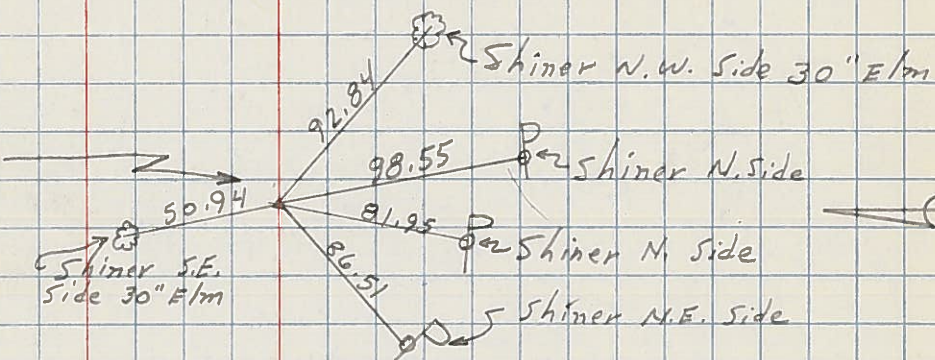
2-28-58  
TEMP. = 40°  
N

123

P.I. sta. 327+45.85

19

$\Delta = 0^{\circ}00'$   
(EST. R.R. SPK.)



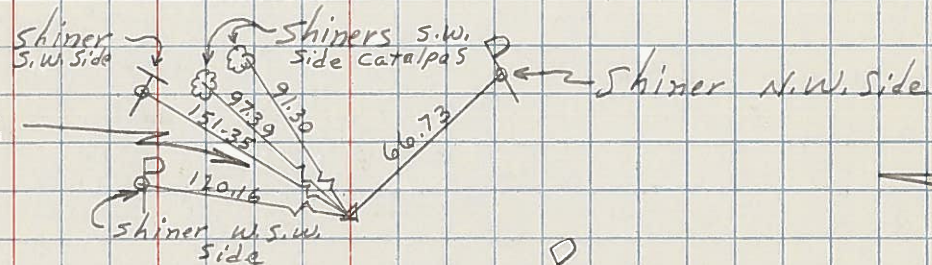
N

122

P.I. sta. 301+06.26

18-A

$\Delta = 0^{\circ}00'$   
(Fd. DRAG Tooth.)



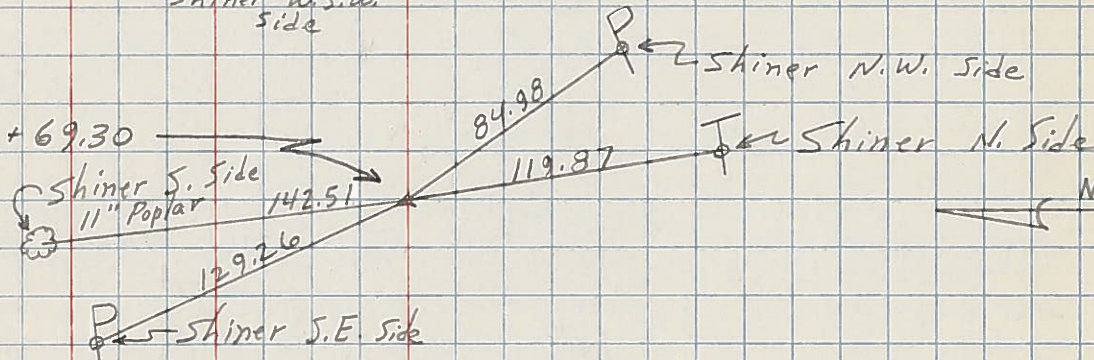
N

121

P.I. - sta 274+69.30

18

$\Delta = 0^{\circ}10'$  RT.  
(R.R. SPK. EST.)



N

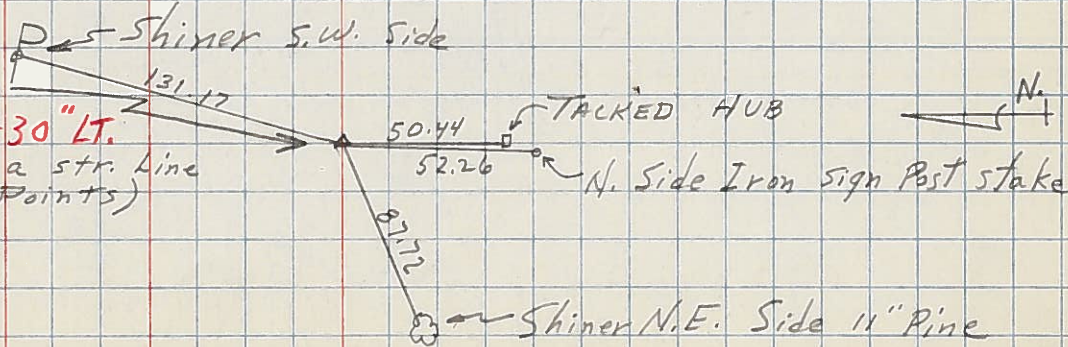
120

17-C

R/w only

P.I. - sta 258+00.26

$\Delta = 0^{\circ}01'$  RT  $0^{\circ}00'30''$  LT.  
(Point is 0.10 RT. OF a STR. LINE  
BETWEEN 1/2 Mile POINTS)  
(Fd Stone R.R. SPK.)



N