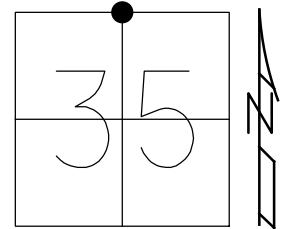


O.D.O.T. DISTRICT 2 SURVEY OFFICE (USE ONLY)

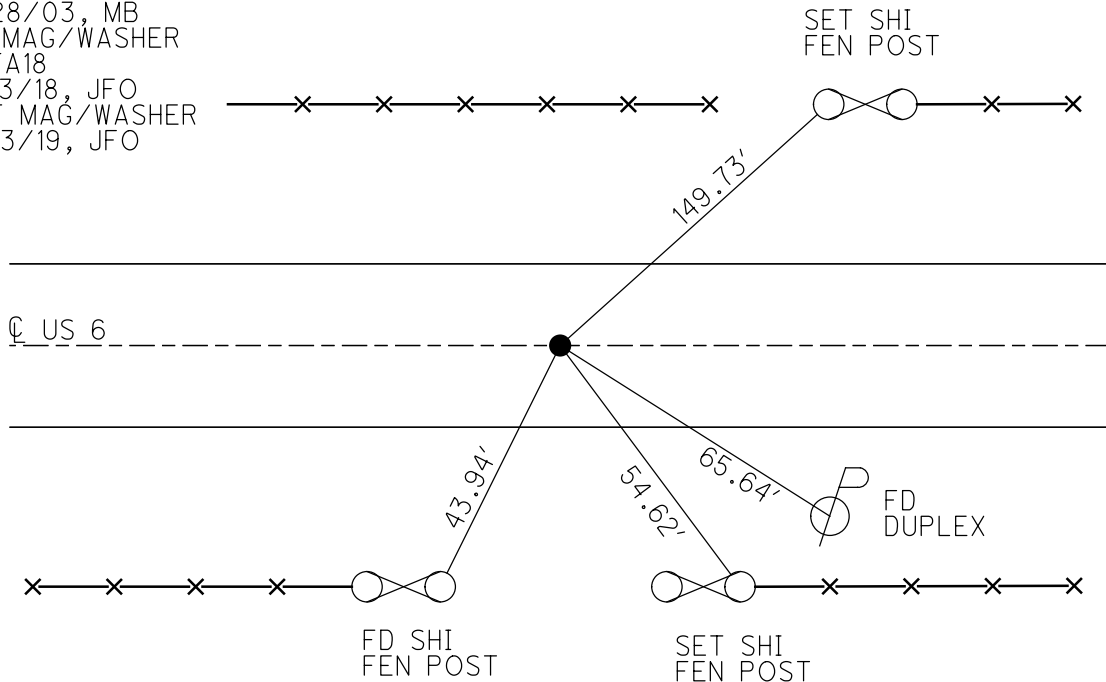
PERSONNEL \_\_\_\_\_ REFERENCE NO. 18 A SHEET 10 OF 19  
 NOTES SEAMAN DATE 2/14/18 ROUTE US 6  
 H.C. O'DONNELL WEATHER CLOUDY COUNTY WILLIAMS  
 R.C. LEU TEMP. 40° TOWNSHIP PULASKI  
 DWG BY NIESE PID 95792 SECTION 35  
 T 6 N R 3 E

TYPE MONUMENT MAG/WASHER  
 ON SURFACE - ~~BELOW~~ ON  
 OFFSET ☉ PAVEMENT ON LT : RT  
11.5' TO LT EDGE PAVEMENT  
 STATION: 880+67.36



HORIZ.DATUM: NAD83(2011) GEOID: 2012A  
 GRID: NORTHING: 652918.587 EASTING: 1423578.165

RECORD:  
 FD LG.R.R.SPIKE  
 4" DOWN  
 5/30/86  
 FD P.K./WASHER  
 4/25/02, MB  
 SET MAG/WASHER  
 8/28/03, MB  
 FD MAG/WASHER  
 REFA18  
 2/13/18, JFO  
 SET MAG/WASHER  
 11/13/19, JFO



# O.D.O.T. DISTRICT 2 SURVEY OFFICE

PERSONNEL \_\_\_\_\_

REFERENCE NO. 18-A

SHEET 10 OF 20

NOTES Barnhisel

H.C. Canterbury

R.C. Moser

DATE 4-25-02

WEATHER Clear/Windy

TEMP. +50°

ROUTE U.S. 60

COUNTY WILLIAMS

TOWNSHIP PULASKI

SECTION 35

T6 N R 3 E

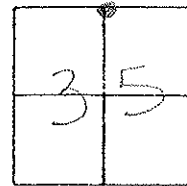
TYPE MONUMENT PK & Washer

ON SURFACE - ~~BELOW~~ on surface

LEFT - ☉ PAV'T. - RIGHT \_\_\_\_\_

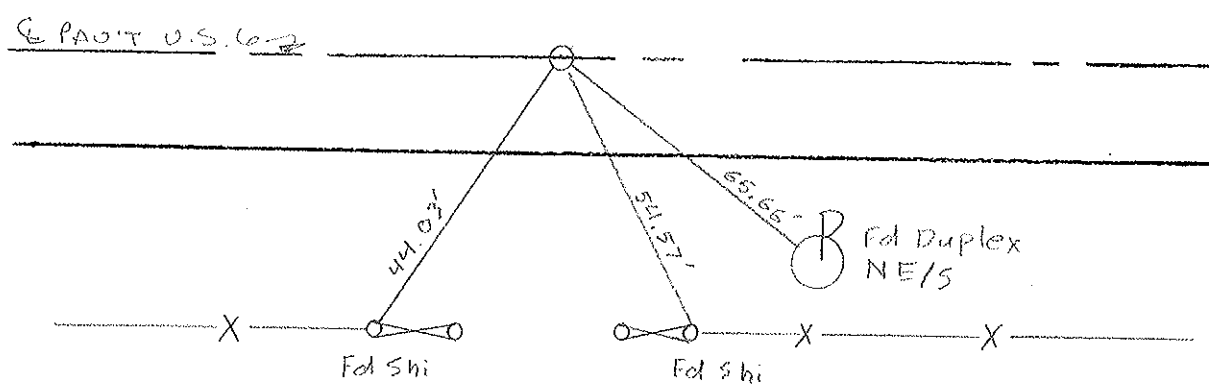
11.5' TO LT. EDGE PAVEMENT

S.L.M. 881+23



Recolo: 5-30-06  
 Fd. Lb. RR spike 4" down

Set Mag Nail & Washer  
 8-28-03  
 MB



# O.D.O.T. DISTRICT 2 SURVEY OFFICE

PERSONNEL

REFERENCE NO. 18-A

SHEET 11 OF 22

NOTES VAN DUSEN

H.C. KUSZ

R.C. MCCORMICK

DATE 20 July 1992

WEATHER cloudy

TEMP. \_\_\_\_\_

ROUTE US 6

COUNTY Williams

TOWNSHIP Pulaski

SECTION 35

T 6 N R 3 E

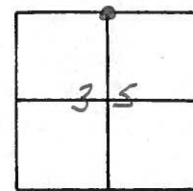
TYPE MONUMENT PK & WASHER

ON SURFACE - ~~BELOW~~ YES

LEFT- & PAV'T. - ~~RIGHT~~ YES

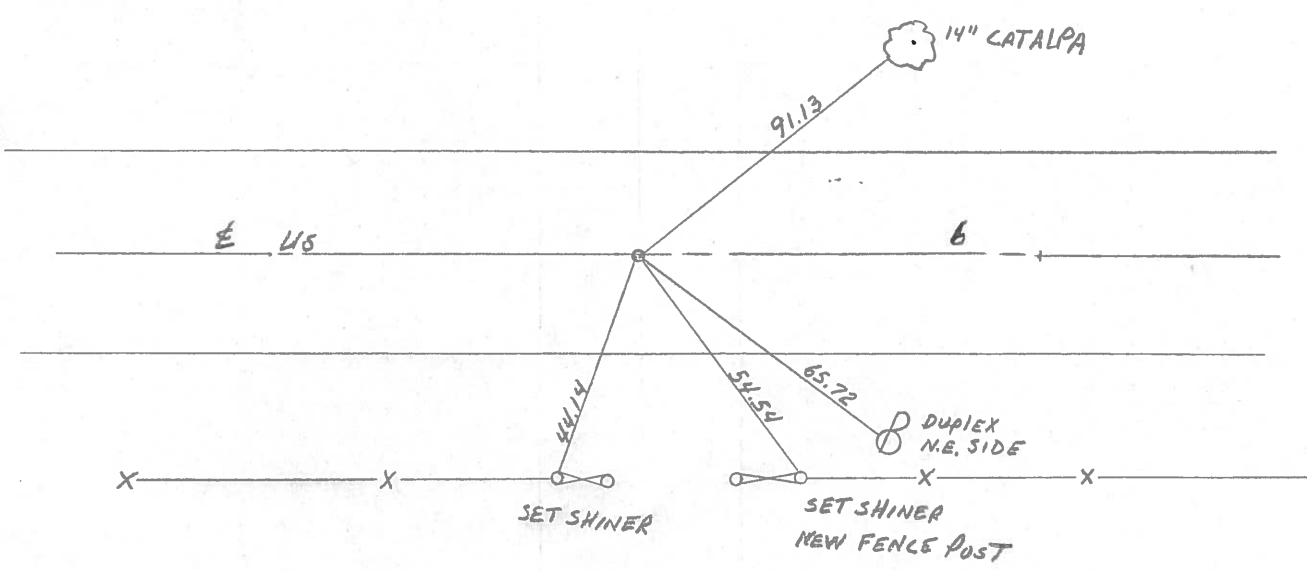
11.7 TO RT EDGE PAVEMENT

S.L.M. 881 + 23



Fd. RR. Spk. IN CENTER  
OF 24' CONC. PAVT.  
1/4 CORNER SEC. 26-35  
Fd RR Spk. 4" DEEP  
5-30-86

SET PK & WASHER  
10-26-92  
MB



County Williams S.R. #6

Date 7 May 84

Township Pulaski

Weather Cloudy

Section 35

Temp. 60°

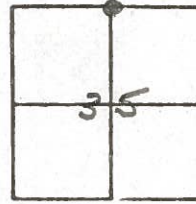
T N, R E

Personnel I. Stone

P. Newson

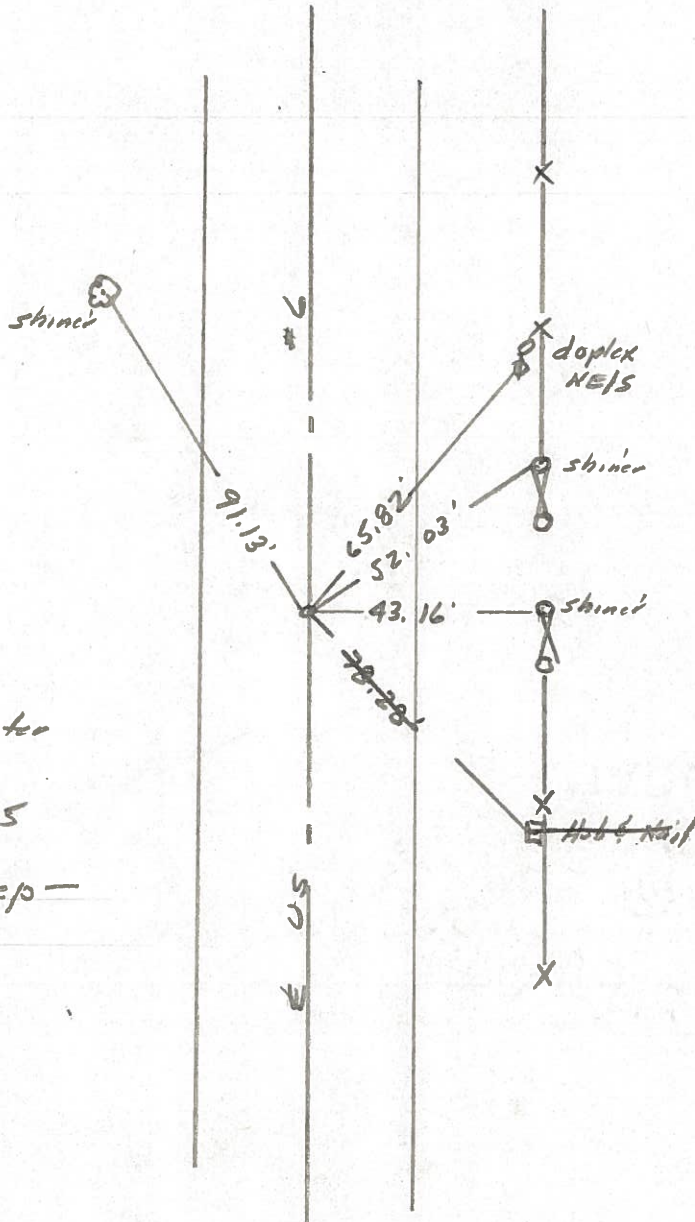
R. Michalak

D. Curtis



880+25

REF. NO. **18-A**

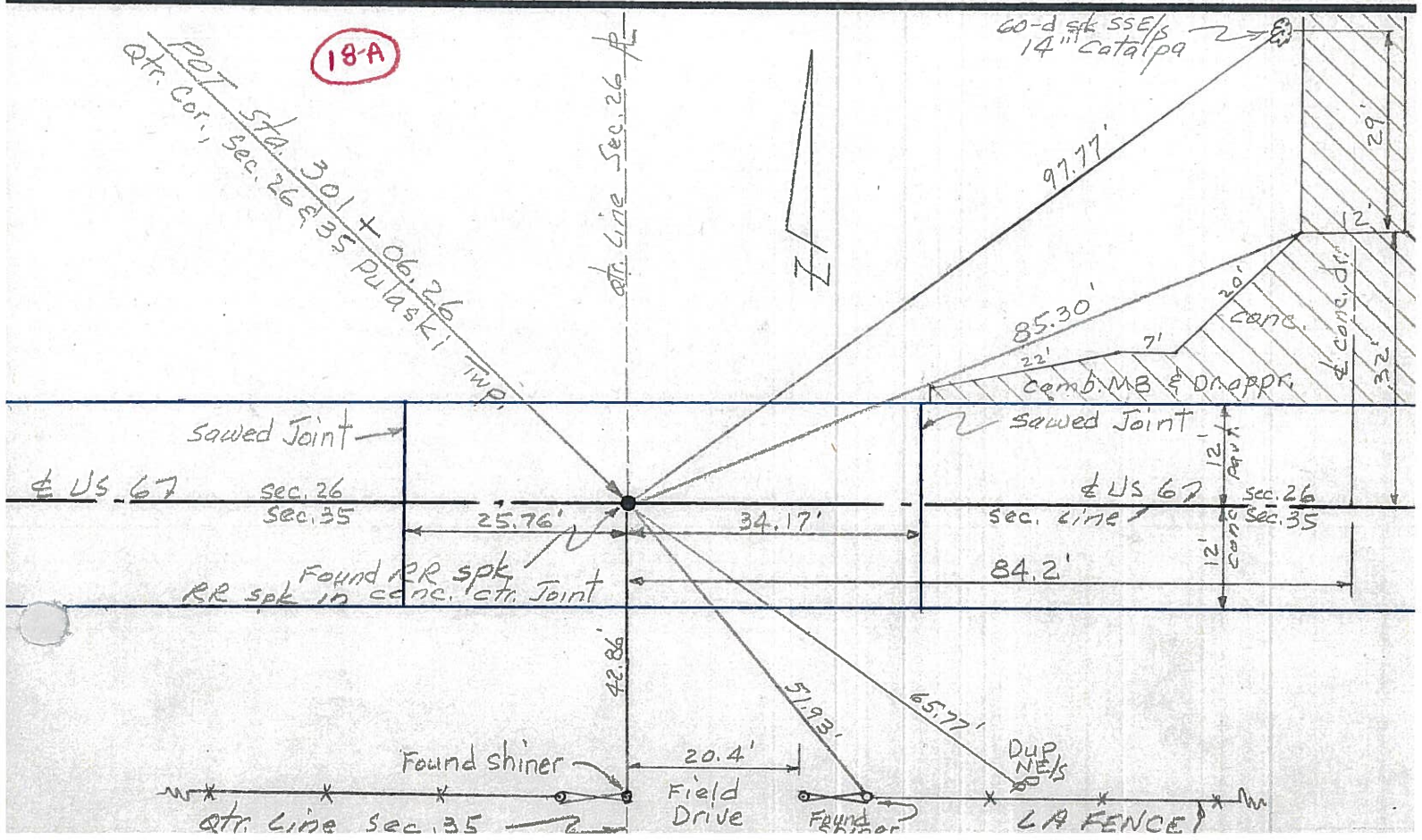
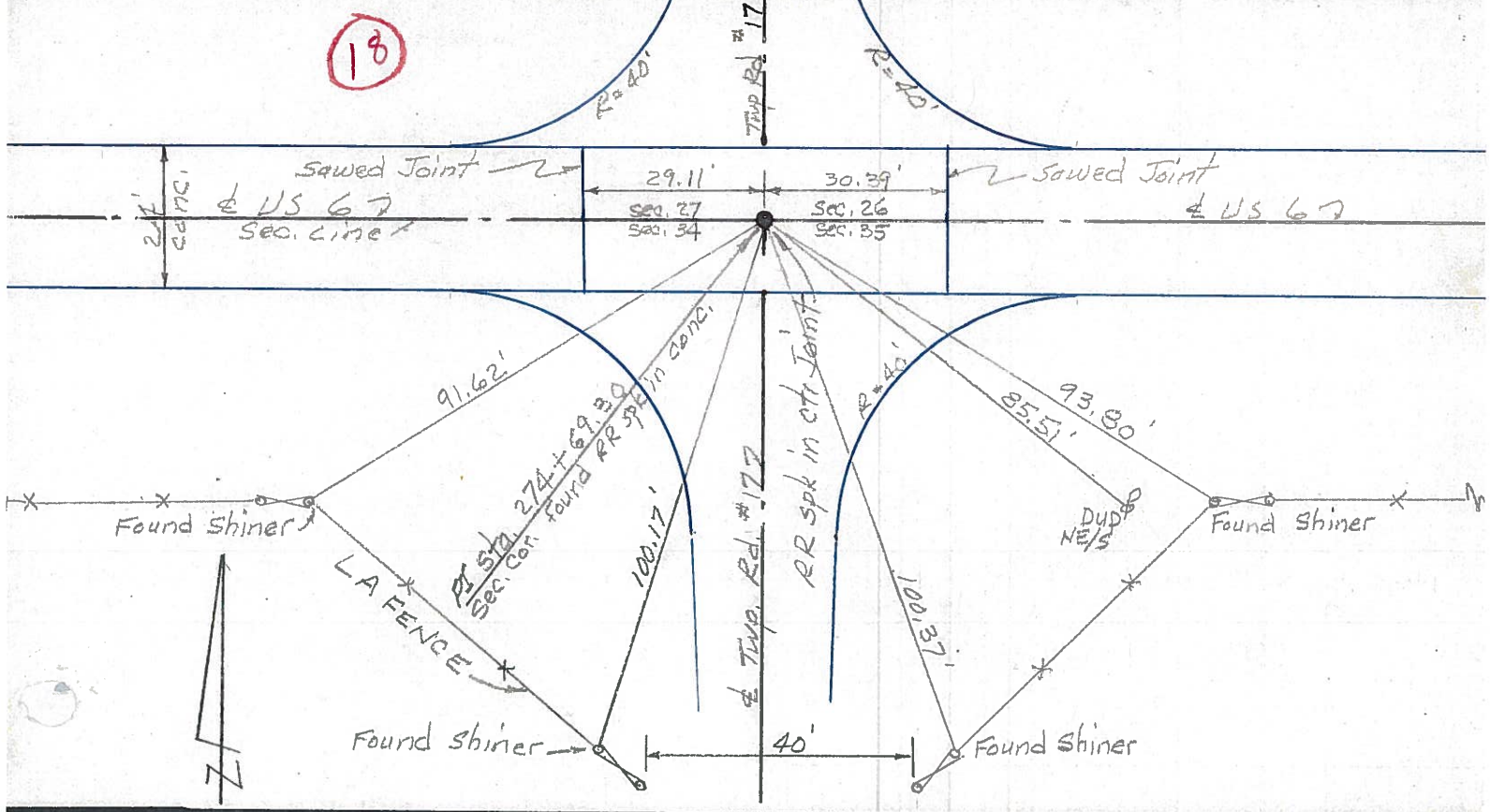


Fd. RR Spk. in center  
of 24' Con. put,  
1/4 Corner Sec. 26-35

Fd. R.R. Spk. 4" Deep -  
5-30-86

PERSONNEL	TITLE	PERSONNEL	TITLE	COUNTY	DATE	WEATHER	TEMP.
Red Beach				Williams	Dec. 1975		
W. Krape				US 6			
				Pulaski Twp.			

DESCRIPTION: CONTROL POINTS

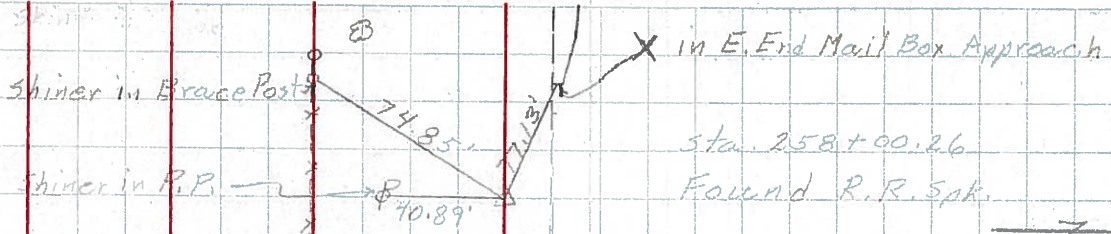


PERSONNEL	TITLE	PERSONNEL	TITLE	COUNTY	DATE	WEATHER	TEMP.
Hoover		Young		Williams	12-8-60	Cloudy	28
Ruffer		Mohler		S. R. 6			
Hoff							
Delventhal				SEC.			

DESCRIPTION LEFT CENTER LINE RIGHT JOB NO.

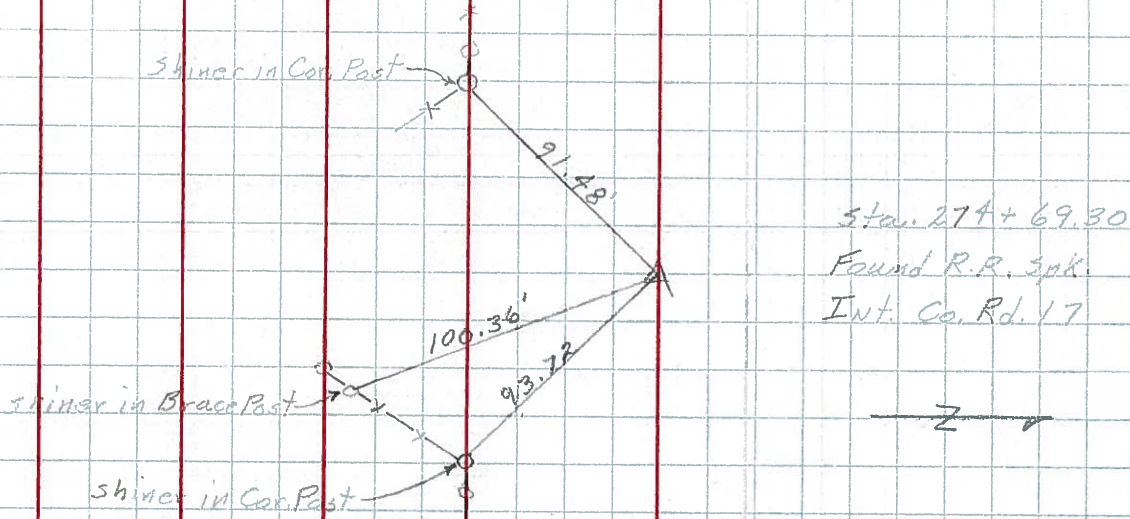
120.

17-C



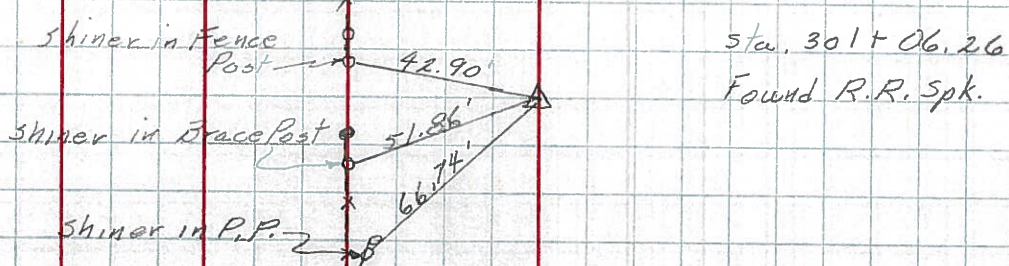
121.

18



122.

18-A



PERSONNEL TITLE PERSONNEL TITLE

Louys

COUNTY Wi.

DATE 2-27-58

S. R. 6

WEATHER

SEC Relocation over Rt. #384

TEMP. 40°

DESCRIPTION

Witnesses to Control Points

JOB NO.

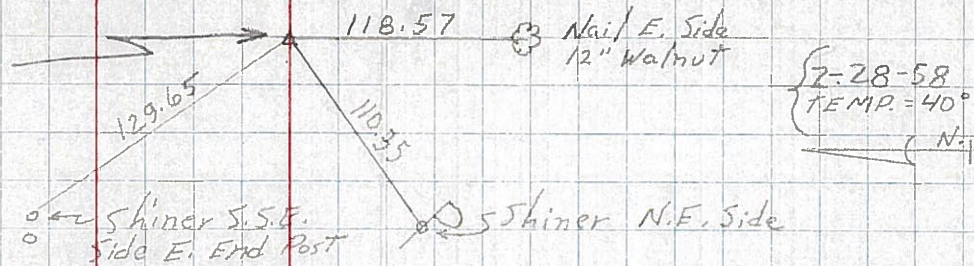
124

R/W only

P.I. sta. 340+51.30

(19-A)

$\Delta = 0^{\circ} 01' 20''$  LT.  
(Point is 0.20' LT. OF  
a STR. LINE BETWEEN  
1/2 MILE POINTS)  
(Fd. Stone R.R. SPK.)

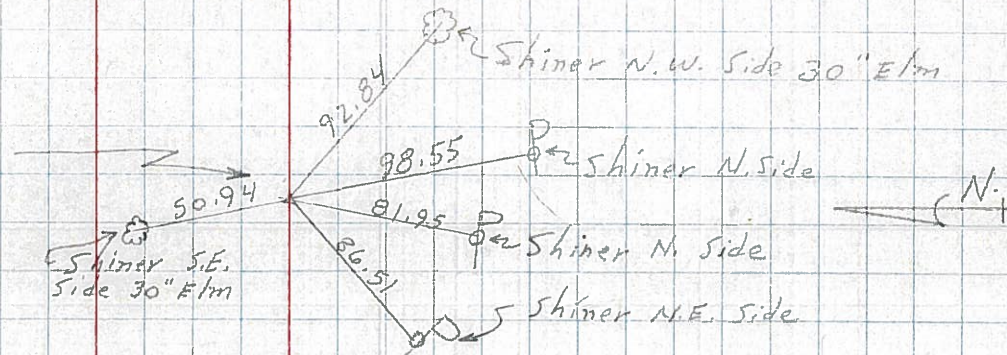


123

(19)

P.I. sta. 327+45.85

$\Delta = 9^{\circ} 00'$   
(EST. R.R. SPK.)

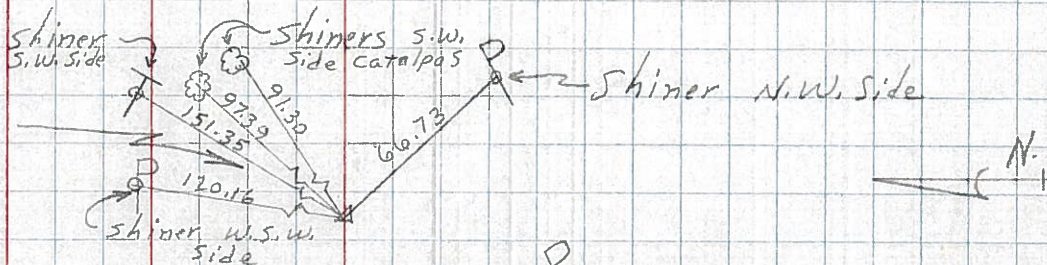


122

(18-A)

P.I. sta. 301+06.26

$\Delta = 0^{\circ} 00'$   
(Fd. DRAG Tooth.)

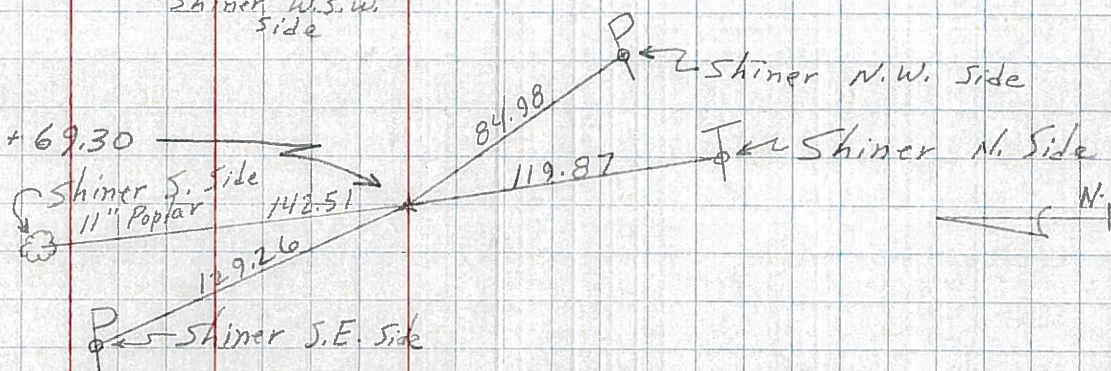


121

(18)

P.I. sta. 274+69.30

$\Delta = 0^{\circ} 10' RT.$   
(R.R. SPK. EST.)



120

(17-C)

R/W only

P.I. sta. 258+00.26

$\Delta = 0^{\circ} 01' RT$   $0^{\circ} 00' 30''$  LT.  
(Point is 0.10 Rt. of a str. line  
Between 1/2 Mile Points)  
(Fd. Stone R.R. SPK.)

