

O.D.O.T. DISTRICT 2 SURVEY OFFICE

PERSONNEL

REFERENCE NO. 19-B

SHEET 13 OF 20

NOTES Bachhiser

H.C. Canterbury

R.C. Moser

DATE 4-29-02

WEATHER Cloudy + Rain

TEMP. +45°

ROUTE U.S. 6

COUNTY WILLIAMS

TOWNSHIP PULASKI

SECTION 36

T₆ N R 3 E

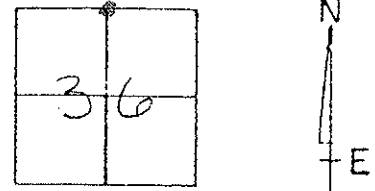
TYPE MONUMENT PK + Washer

ON SURFACE - ~~BELOW~~ on surface

LEFT - ~~C~~ PAV'T. - RIGHT 0.3' LT

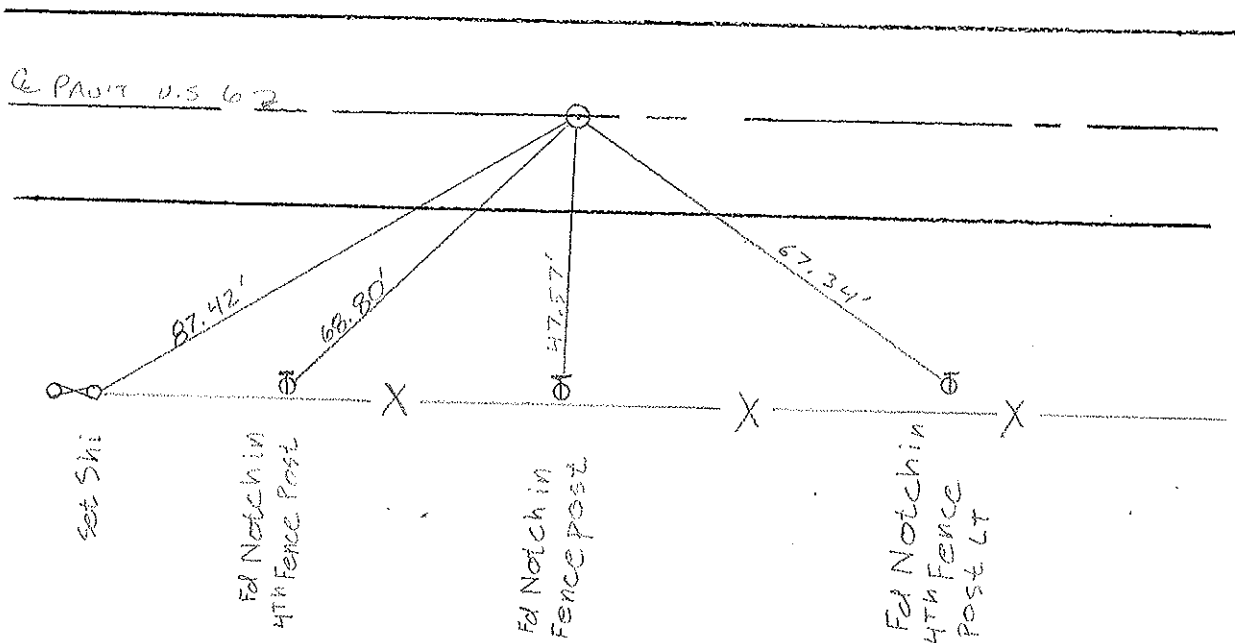
11.6' TO LT EDGE PAVEMENT

S.L.M. 933 + 71



RECORD: 5-30-86
FO L.O. RR. SPIKE 4" DOWN

Set Mag Nail & Washer
8-28-03
MB



O.D.O.T. DISTRICT 2 SURVEY OFFICE

PERSONNEL

REFERENCE NO. 19B

SHEET 14 OF 22

NOTES VAN DUSEN

H.C. KUSZ

R.C. MCGORMICK

DATE 20 July 1992

WEATHER cloudy

TEMP. 75°

ROUTE US 6

COUNTY Williams

TOWNSHIP Pulaski

SECTION 36

T. 6 N R. 3 E

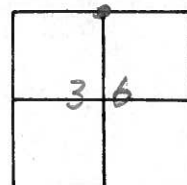
TYPE MONUMENT PK & WASHER

ON SURFACE - BELOW YES

LEFT- & PAV'T. - RIGHT YES

11.6 TO RT EDGE PAVEMENT

S.L.M. 933+71

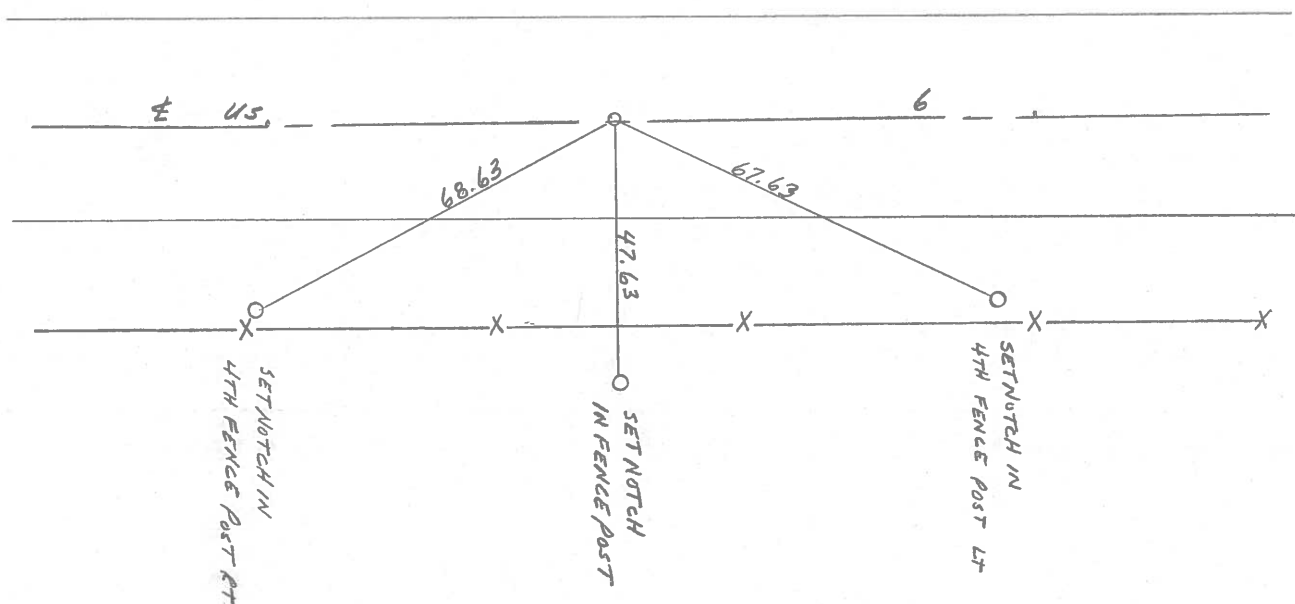


Fd. R.R. Spk IN CENTER
OF 24' CONC. PVMT.

1/4 Cor Sec 25-36

Fd. RR. SPK 4" DEEP
5-30-86

SET PK & WASHER
10-26-92
MB



County Williams S.R. #6

Date 7 May 84

Township Polaski

Weather Cloudy

Section 36

Temp. 62°

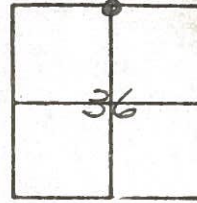
T N, R E

Personnel I. Stone

P. Neuser

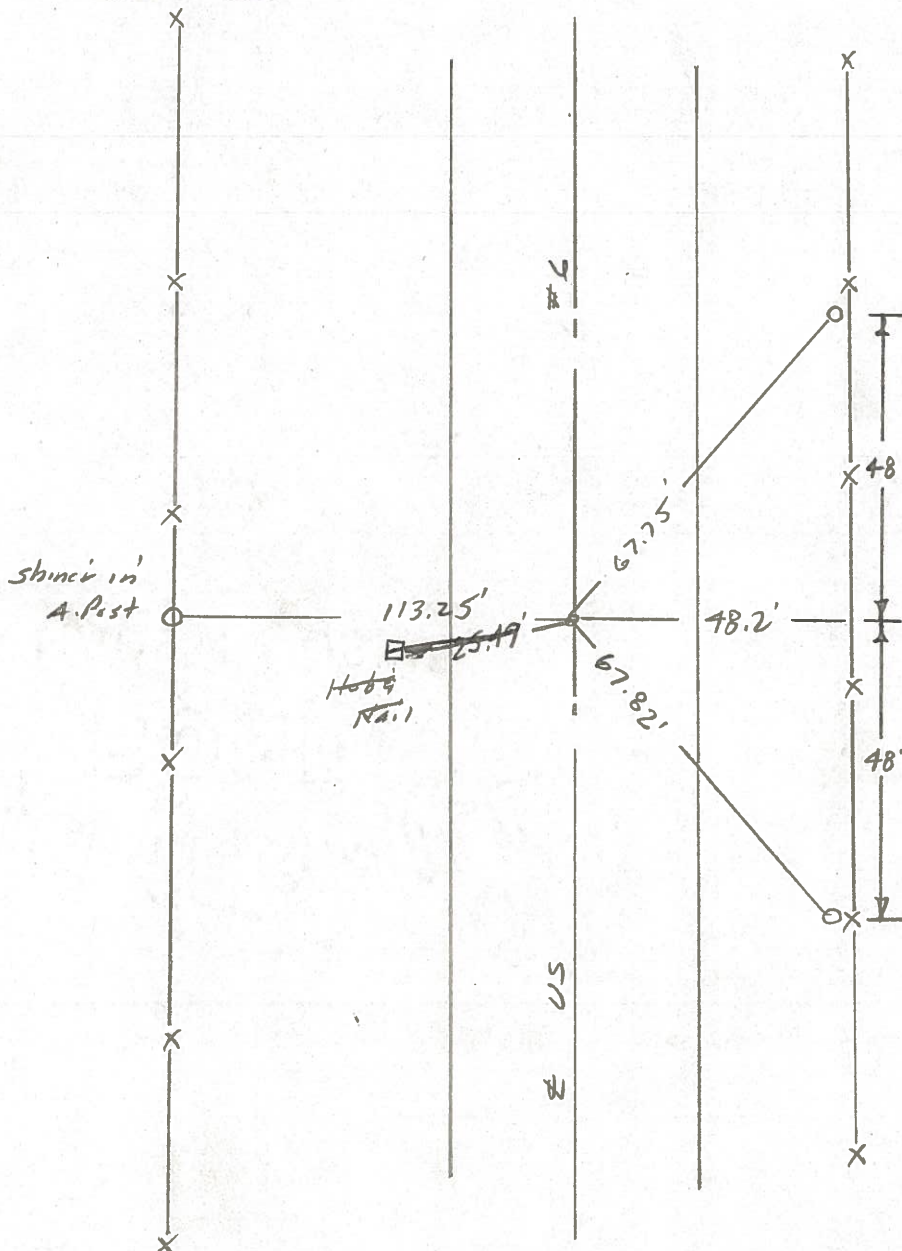
R. Michalak

D. Curtis



932 + 65

REF. NO. 19-B



Fd. RR Spk. in center
of 24' Con. post
1/4 Con. Sec. 25-36

Fd. R.R. Spk. 4" Deep
5-30-86

PERSONNEL TITLE PERSONNEL TITLE

Red Beach
W. Krape

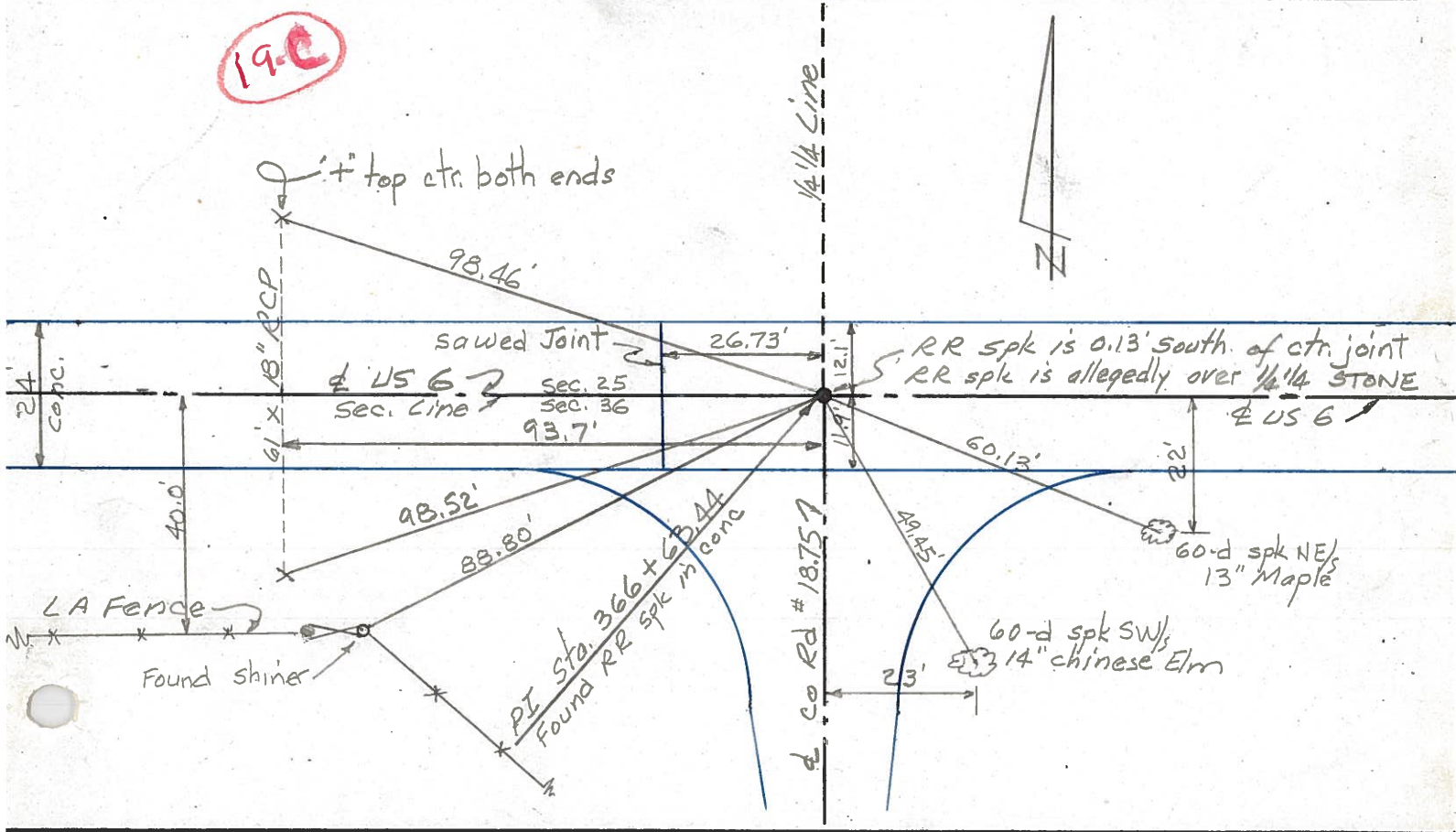
COUNTY Williams DATE Nov 75

S. R. US 6 WEATHER

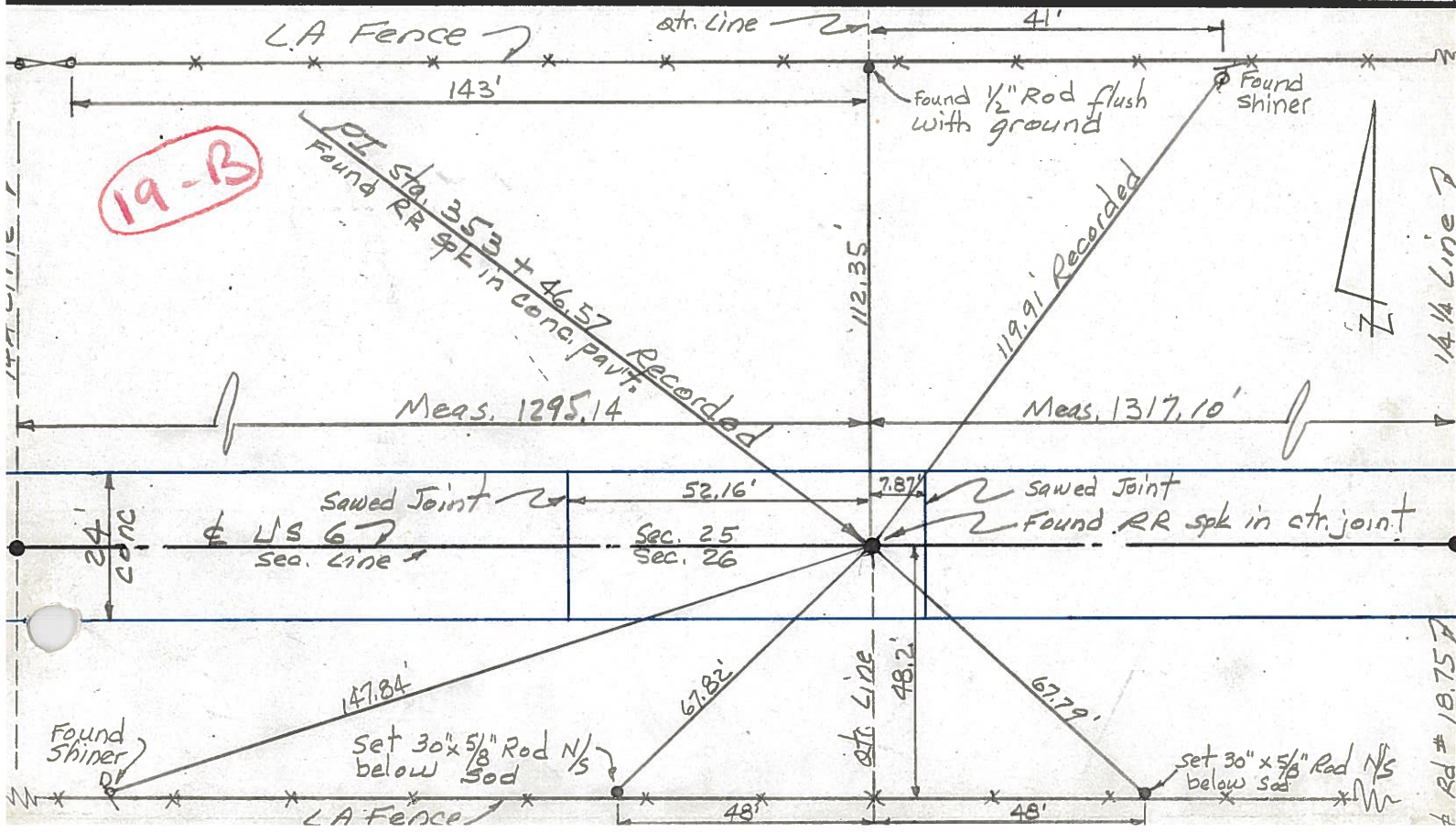
SEC. Pulaski Twp TEMP

DESCRIPTION CONTROL POINTS JOB NO.

19-C



19-B

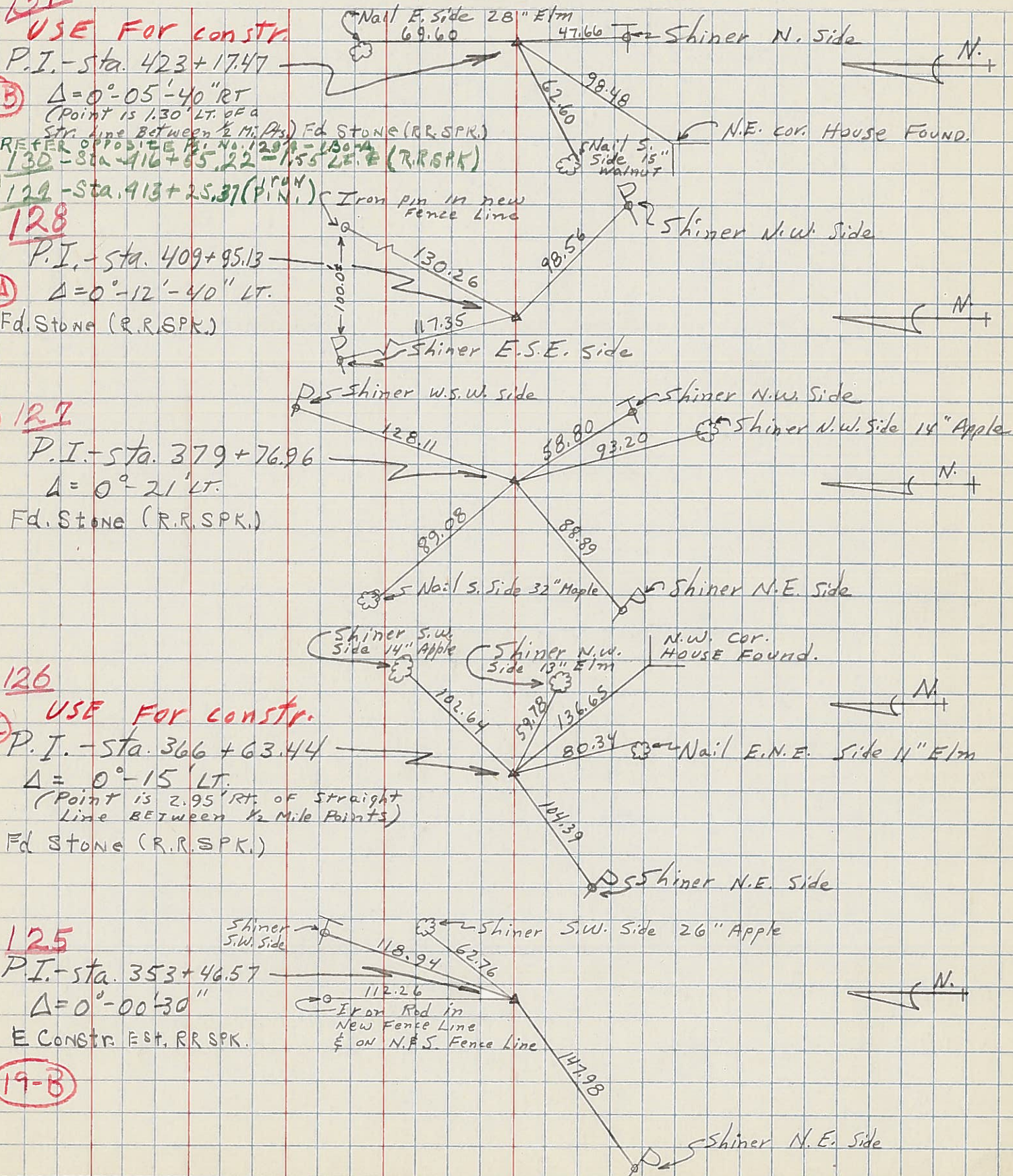


PERSONNEL TITLE PERSONNEL TITLE COUNTY Wi. DATE 2-28-58

S. R. 6 WEATHER _____

SEC. Relocation over Rt. #384 TEMP. 40°

DESCRIPTION Witnesses to Control Points JOB NO. _____



131
USE FOR CONSTR.
P.I. - sta. 423+17.47

20-B
 $\Delta = 0^\circ - 05' - 40''$ RT
(Point is 1.30' LT. of a Str. line Between 2 Mile Pts.) Fd Stone (R.R. SPK.)

REFER TO PROS. 128 & 129
130 - Sta. 416+55.22 - 1.55' E. (R.R. SPK.)
129 - Sta. 413+25.37 (P.I.N.)

128
P.I. - sta. 409+95.13

20-A
 $\Delta = 0^\circ - 12' - 40''$ LT.
Fd. Stone (R.R. SPK.)

127
P.I. - sta. 379+76.96

$\Delta = 0^\circ - 21'$ LT.
Fd. Stone (R.R. SPK.)

126
USE FOR CONSTR.
P.I. - sta. 366+63.44

19-C
 $\Delta = 0^\circ - 15'$ LT.
(Point is 2.95' RT. of Straight Line BETWEEN 2 Mile Points)

Fd Stone (R.R. SPK.)

125
P.I. - sta. 353+46.57

$\Delta = 0^\circ - 00' - 30''$
E CONSTR. EST. R.R. SPK.

19-B