

O.D.O.T. DISTRICT 2 SURVEY OFFICE (USE ONLY)

PERSONNEL

REFERENCE NO. 19 C

SHEET 14 OF 19

NOTES AUBLE

DATE 9/4/19

ROUTE US 6

H.C. LEU

WEATHER SUNNY

COUNTY WILLIAMS

R.C. NASON

TEMP. 65°

TOWNSHIP PULASKI

NIESE

SECTION 36

DWG BY NIESE

PID 95792

T 6 N R 3 E

TYPE MONUMENT R.R.SPIKE

ON SURFACE - ~~BELOW~~ ON

OFFSET 0 PAVEMENT ON LT : RT

11.9' TO LT EDGE PAVEMENT

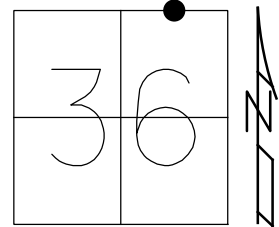
STATION: 946+23.49

HORZ.DATUM: NAD83(2011)

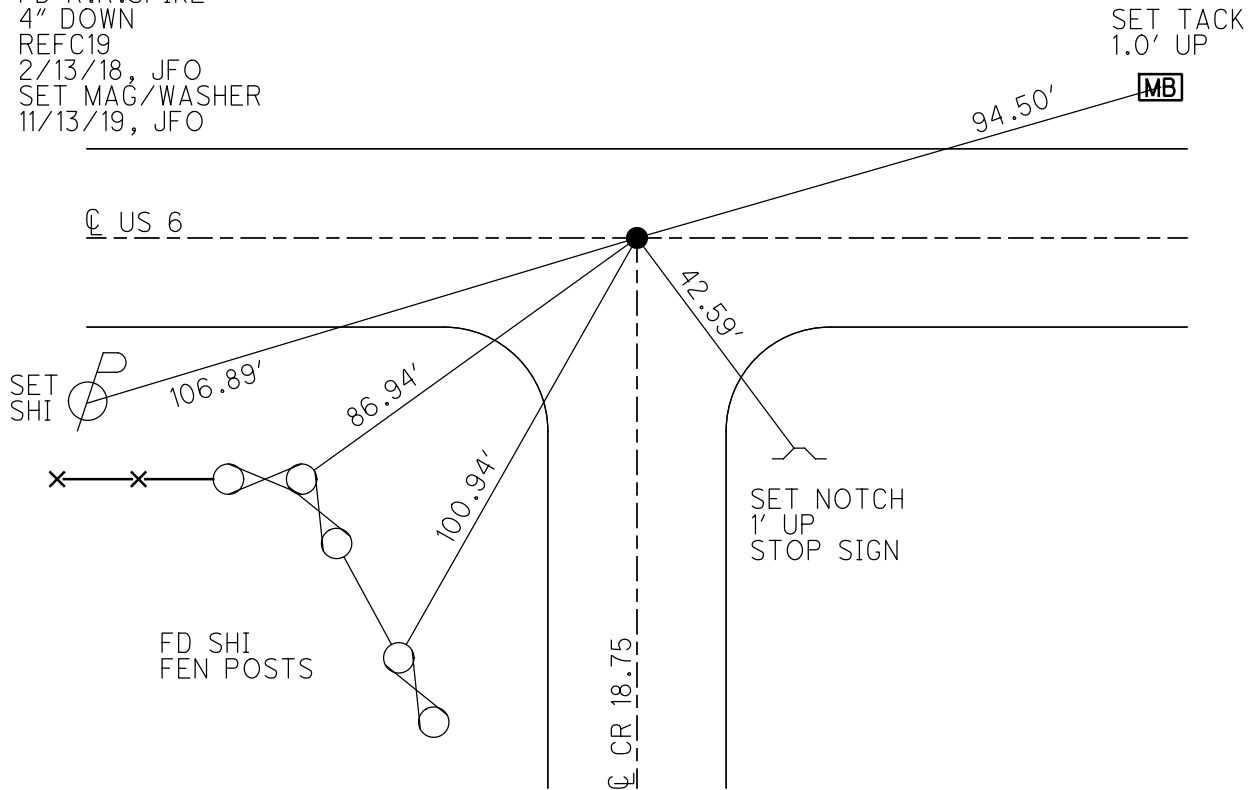
GEOID: 2012A

GRID: NORTHING: 652745.168

EASTING: 1430132.010



RECORD:  
 FD LG.R.R.SPIKE  
 4" DOWN  
 5/30/86  
 FD P.K./WASHER  
 4/29/02, MB  
 SET MAG/WASHER  
 8/28/03, MB  
 FD R.R.SPIKE  
 4" DOWN  
 REFC19  
 2/13/18, JFO  
 SET MAG/WASHER  
 11/13/19, JFO



# O.D.O.T. DISTRICT 2 SURVEY OFFICE

PERSONNEL \_\_\_\_\_

REFERENCE NO. 19-C

SHEET 14 OF 20

NOTES Barnhisel

H.C. Canterbury

DATE 4-29-02

ROUTE U.S. 6

R.C. Moser

WEATHER Rain/cloudy

COUNTY WILLIAMS

TEMP. +45°

TOWNSHIP PULASKI

SECTION 36

T 6 N R 3 E

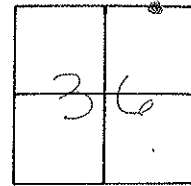
TYPE MONUMENT PK + Washer

ON SURFACE - BELOW on surface

LEFT - ~~C~~ PAV'T. - RIGHT 0.3 LT

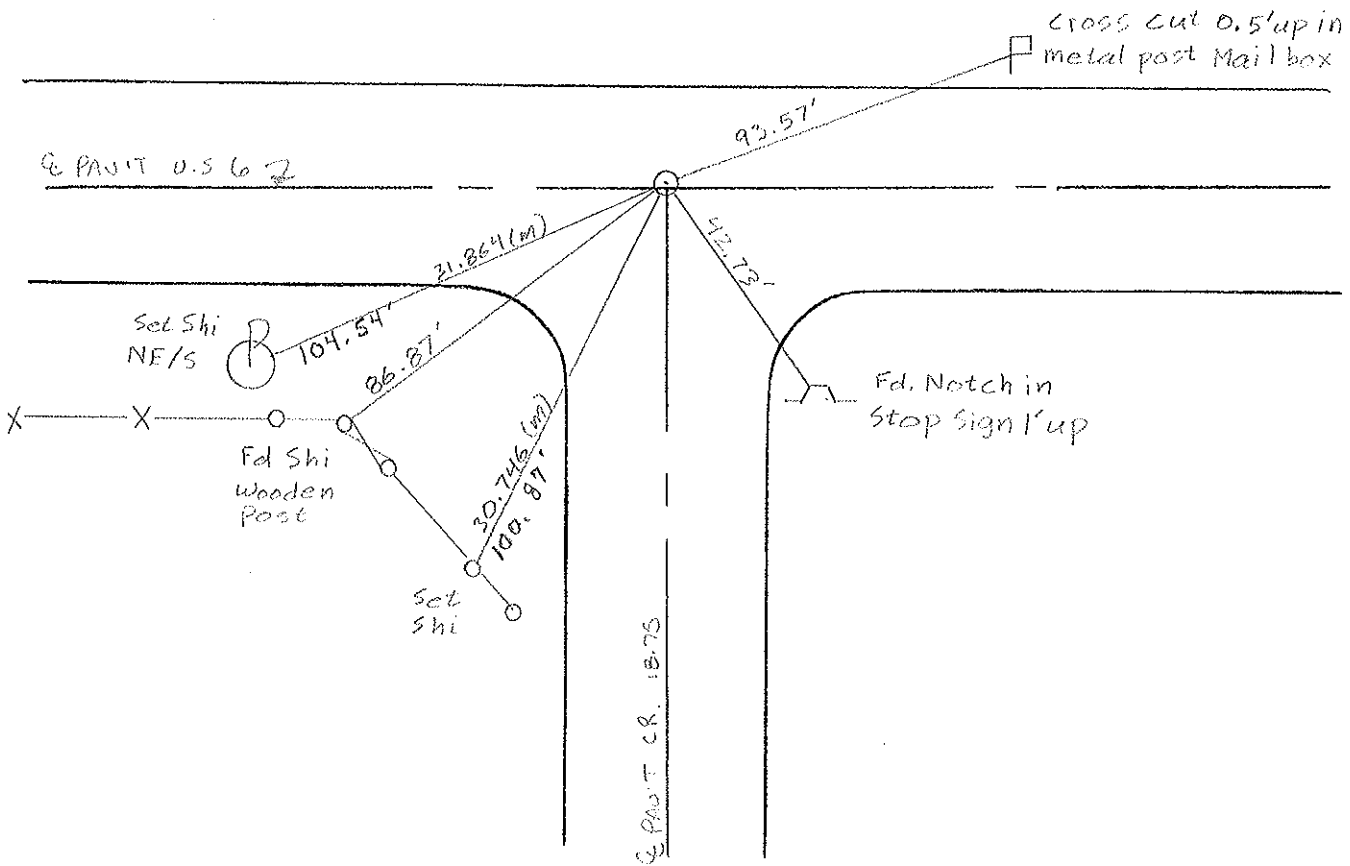
11.5' TO LT. EDGE PAVEMENT

S.L.M. 946+89



RECORD: 5-30-02  
 F.D. W.B.L. SPIKE 4" Down

Set mag. nail & washer  
 8-28-03  
 MS



# O.D.O.T. DISTRICT 2 SURVEY OFFICE

PERSONNEL

REFERENCE NO. 19-C

SHEET 15 OF 22

NOTES VAN DUSEN

H.C. KUSZ

DATE 20 July 1992

ROUTE US 6

R.C. MCCORMICK

WEATHER Rain

COUNTY Williams

TEMP. 75"

TOWNSHIP Pulaski

SECTION 36

T 6 N R 3 E

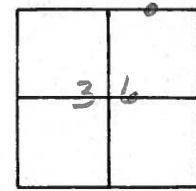
TYPE MONUMENT PK & WASHER

ON SURFACE - ~~BELOW~~ YES

LEFT- & PAV'T. - ~~RIGHT~~ YES

12.7 TO LT EDGE PAVEMENT

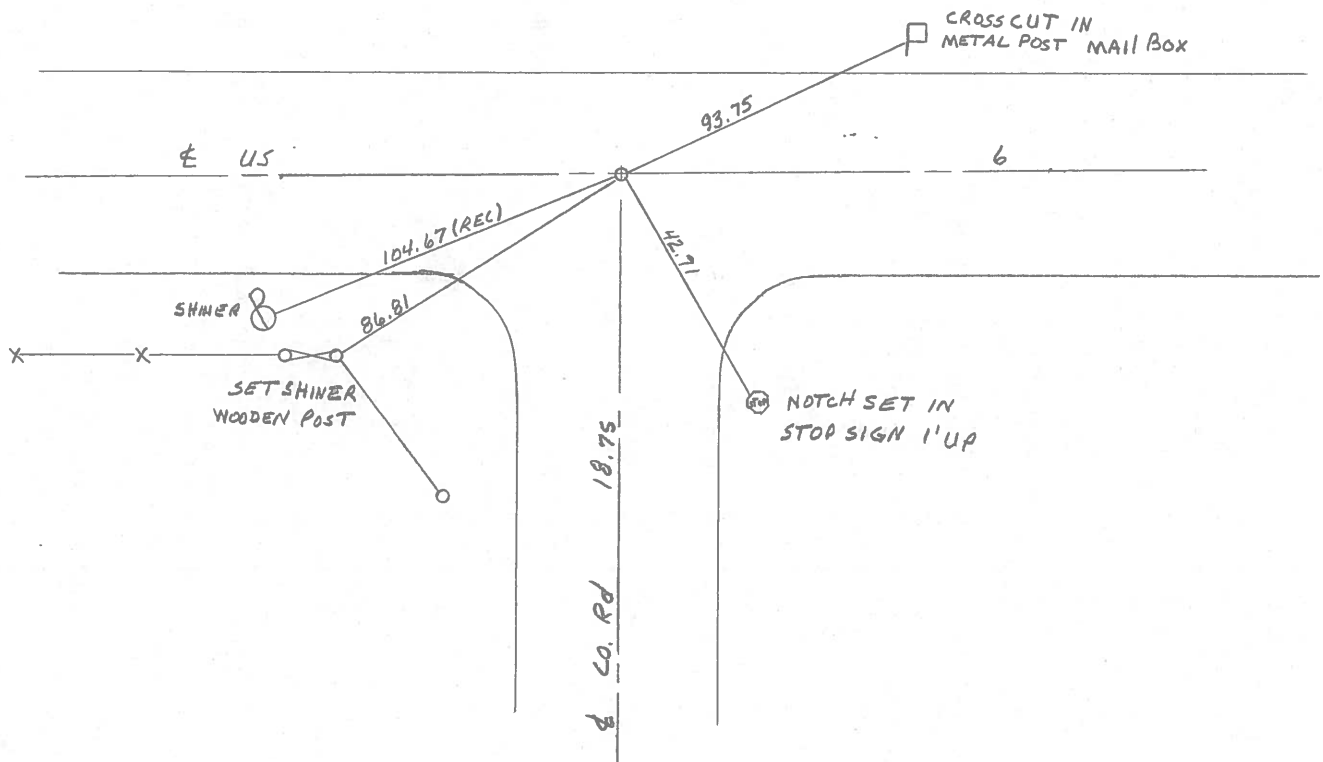
S.L.M. 946+89



Fd. R.R. SPK IN CENTER  
OF 24' CONC. PAVT.

SET PK & WASHER  
10-26-92  
MB

Fd. R.R. SPK. 4" DEEP  
5-30-86



County Williams S.R. # 6

Date 7 May 84

Township Polaski

Weather Cloudy

Section 36

Temp. 62°

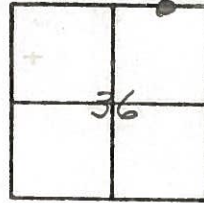
T.N, R.E

Personnel I. Stone

P. Houser

R. Michalak

D. Curtis



945+85

REF. NO. 19-C



near edge  
4" round M.Box  
Post



93.23'

26.23'

Hub & Nail

60d nail SW/S  
14" Elm



49.39'

E Co. Rd. # 18.75

88.26'  
104.67'

Shiner in  
A. post

Shiner

Fd RR Spk. in center of  
24' Con. put

Fd. R.R. Spk. 4" Deep -  
5-30-86

E U.S.



PERSONNEL TITLE PERSONNEL TITLE

Red Beach  
W. Krape

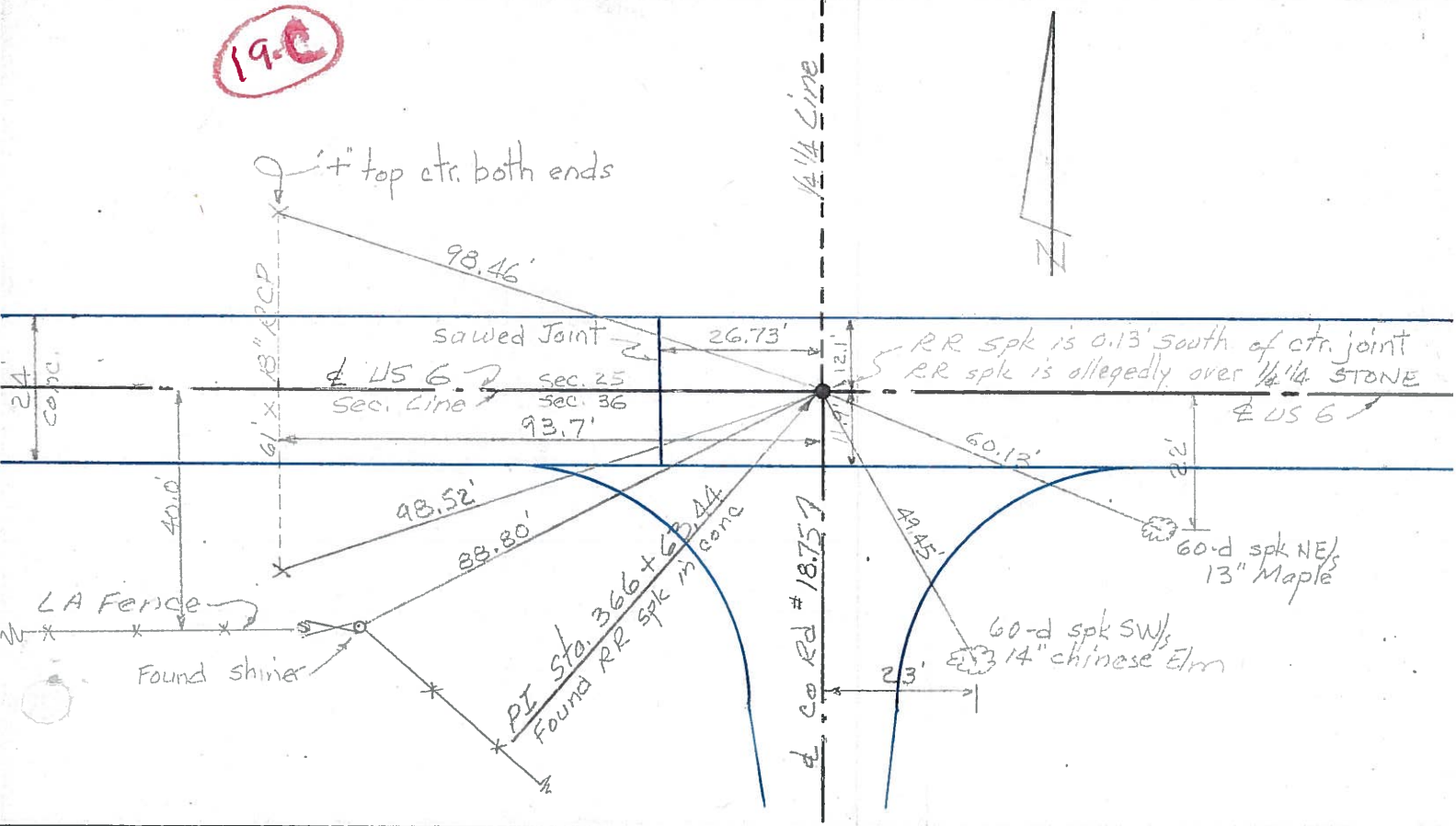
COUNTY Williams DATE Nov 75

S. R. US 6 WEATHER

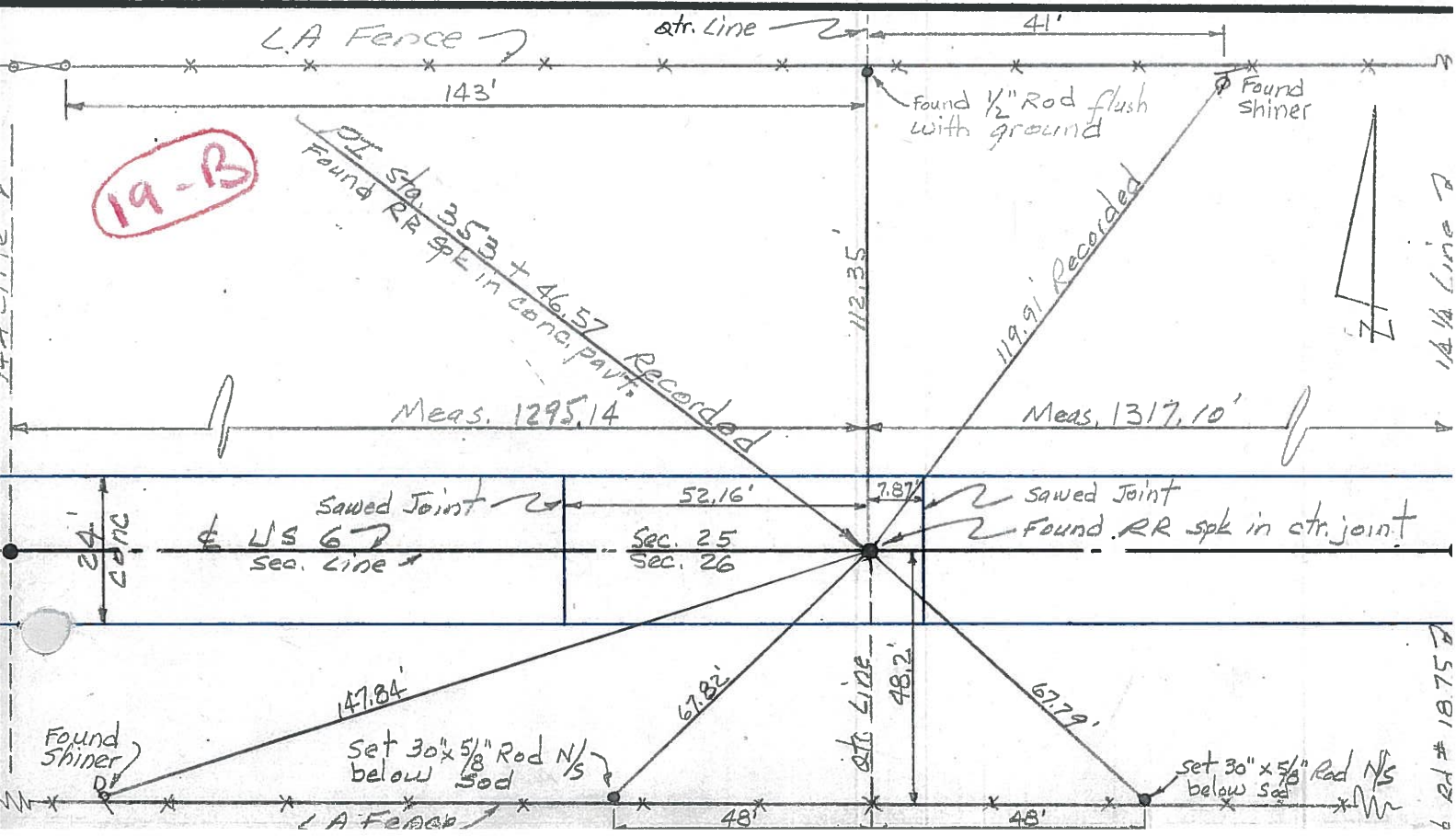
SEC Pulaski Twp TEMP

DESCRIPTION CONTROL POINTS JOB NO.

19-C



19-B



PERSONNEL TITLE PERSONNEL TITLE

COUNTY Williams DATE 12-8-60

Hoover Young

Ruffer Mahler

Hoff

Delventhal

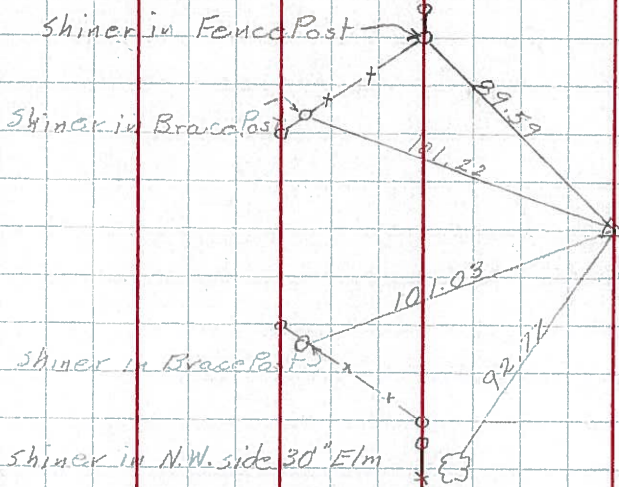
S. R. 6 WEATHER Cloudy

SEC. TEMP. 30°

DESCRIPTION LEFT CENTER LINE RIGHT JOB NO.

123.

19



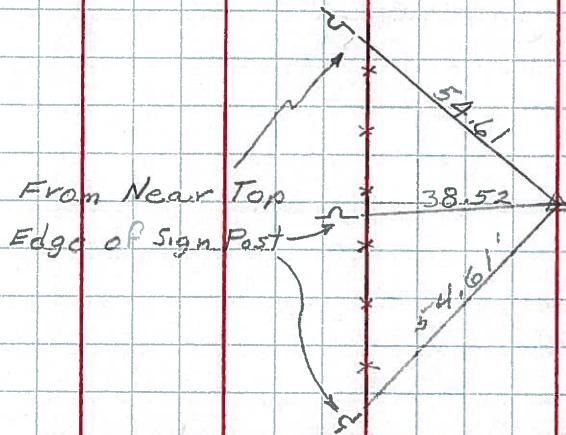
Sta. 327+45.83

Found R.R. Spk.

Int. Co. Rd. 18

124.

19-A

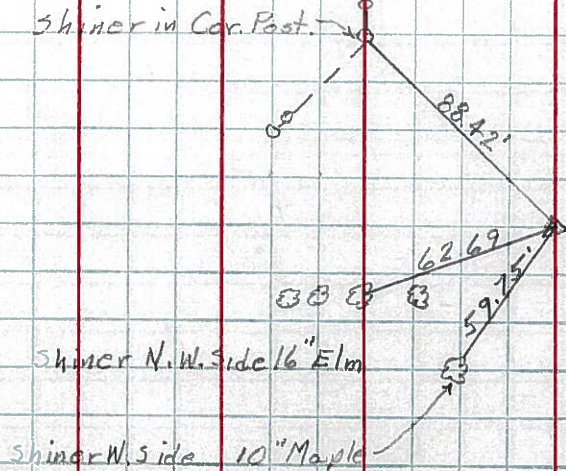


Sta. 340+51.30

Found R.R. Spk.

126.

19-C

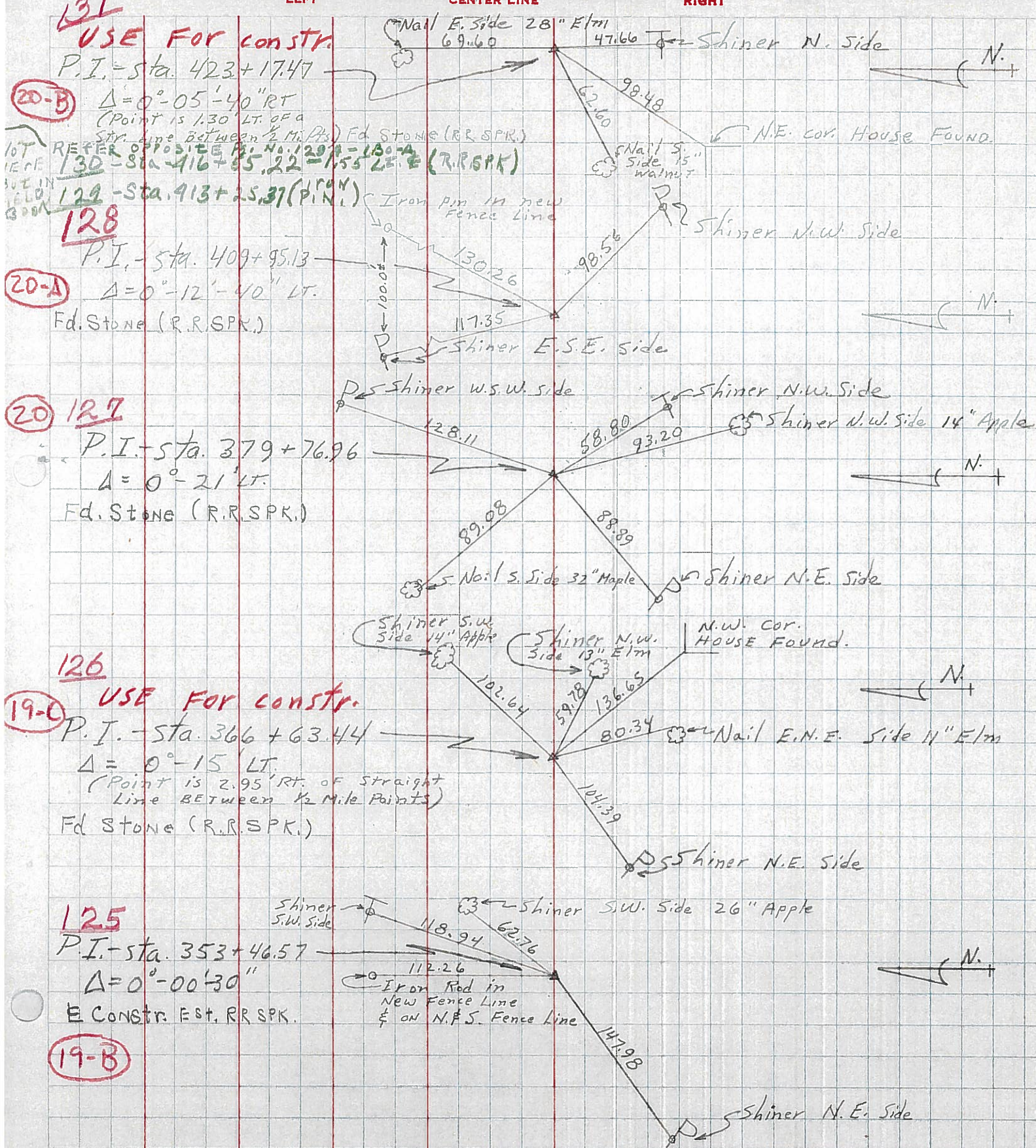


Sta. 366+63.44

Found R.R. Spk.

Int. Co. Rd. 1875

PERSONNEL TITLE PERSONNEL TITLE COUNTY Wi. DATE 2-28-58  
 Louys \_\_\_\_\_ S. R. 6 WEATHER \_\_\_\_\_  
 \_\_\_\_\_ SEC. Relocation over Rt. #384 TEMP. 40°  
 DESCRIPTION Witnesses to Control Points JOB NO. \_\_\_\_\_



131  
 20-B  
 129  
 128  
 20-A  
 20  
 127  
 126  
 19-C  
 125  
 19-B

NOT HERE BUT IN FIELD BOOK