

O.D.O.T. DISTRICT 2 SURVEY OFFICE (USE ONLY)

PERSONNEL

REFERENCE NO. 20 A

SHEET 16 OF 19

NOTES AUBLE DATE 9/4/19
 H.C. LEU WEATHER SUNNY
 R.C. NASON TEMP. 65°

ROUTE US 6
 COUNTY WILLIAMS
 TOWNSHIP SPRINGFIELD
 SECTION 31

DWG BY NIESE PID 95792

T 6 N R 4 E

TYPE MONUMENT R.R.SPIKE

~~ON SURFACE~~ - BELOW 4"

OFFSET \odot PAVEMENT 0.4' \pm : RT

12.1' TO LT EDGE PAVEMENT

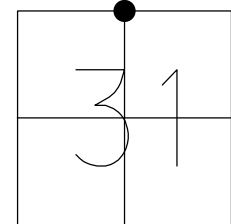
STATION: 989+53.82

HORZ.DATUM: NAD83(2011)

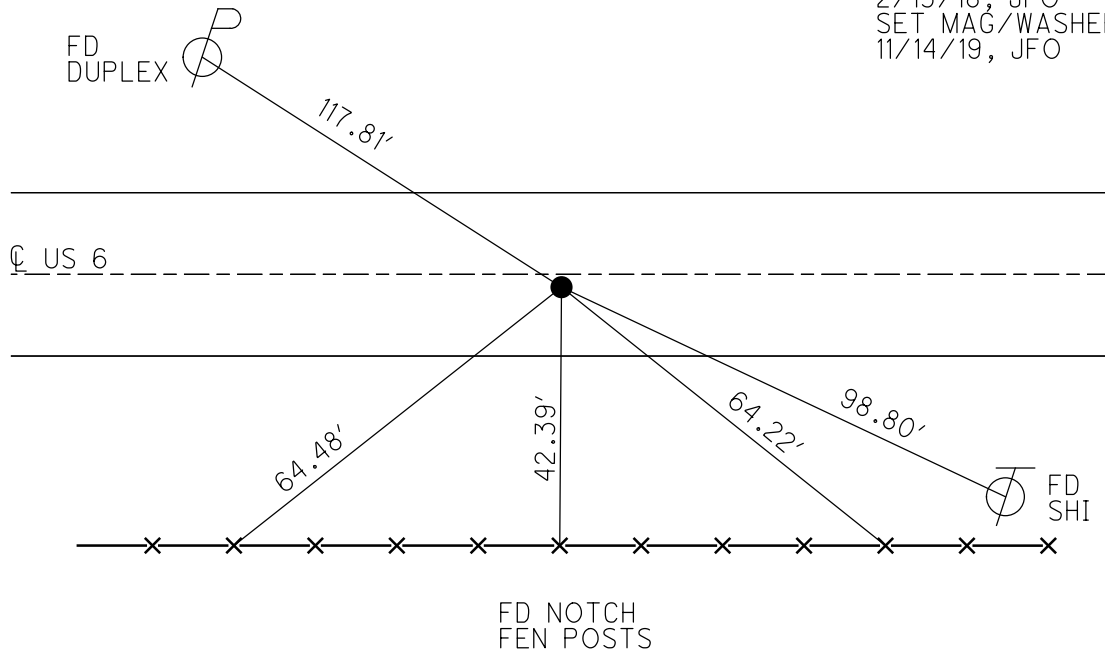
GEOID: 2012A

GRID: NORTHING: 652667.944

EASTING: 1434461.628



RECORD:
 FD LG.R.R.SPIKE
 4" DOWN
 5/30/86
 FD P.K./WASHER
 4/29/02, MB
 FD P.K.NAIL
 8/28/03, MB
 FD R.R.SPIKE
 4" DOWN
 REFA20
 2/13/18, JFO
 SET MAG/WASHER
 11/14/19, JFO



O.D.O.T. DISTRICT 2 SURVEY OFFICE

PERSONNEL

REFERENCE NO. 20-A

SHEET 16 OF 20

NOTES Bachhiser

H.C. Canterbury

R.C. Moser

DATE 4-29-02

WEATHER Cloudy

TEMP. +45°

ROUTE U.S. 6

COUNTY WILLIAMS

TOWNSHIP SPRINGFIELD

SECTION 30

T. 6 N. R. 4 E.

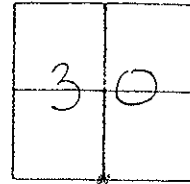
TYPE MONUMENT PK + Washer

ON SURFACE - BELOW on surface

LEFT - PAV'T. - RIGHT 0.3' LT

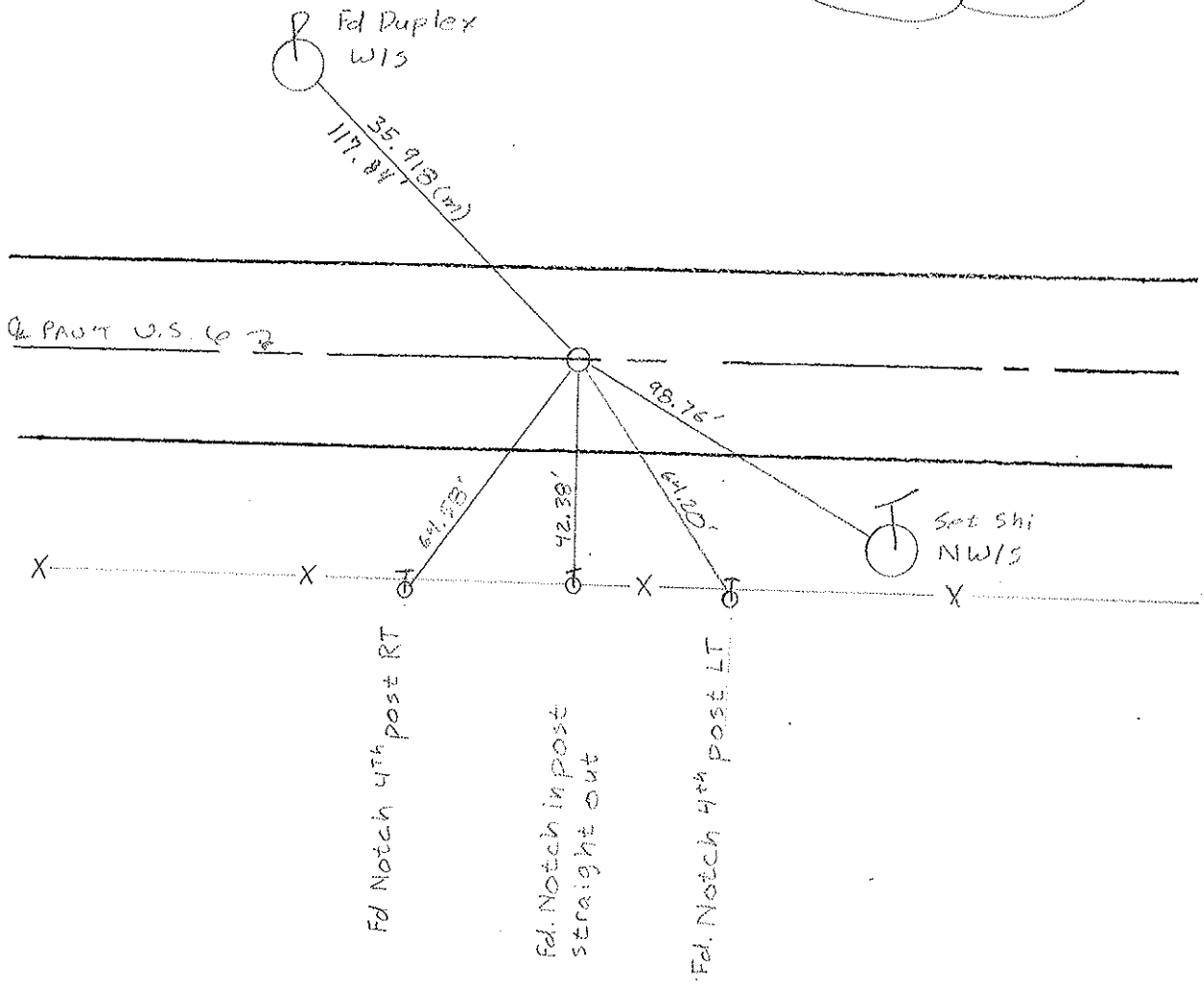
11.4' TO LT. EDGE PAVEMENT

S.L.M. 990+24



RECOR. 5-30-86
FO. LG RR SPIKE 4" Down

Fd PK NAIL SET BY OTHERS
TIRES FIT OK
8-28-03
MB



O.D.O.T. DISTRICT 2 SURVEY OFFICE

PERSONNEL

REFERENCE NO. 20-A

SHEET 17 OF 22

NOTES VAN DUSEN

H.C. KUSZ

R.C. MCCORMICK

DATE 20 July 1992

WEATHER RAIN

TEMP. 75°

ROUTE 456

COUNTY Williams

TOWNSHIP Springfield

SECTION 30-31

T. 6 N. R. E

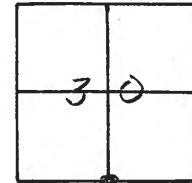
TYPE MONUMENT PK & WASHER

ON SURFACE - ~~BELOW~~ YES

~~LEFT - & PAV'T. - RIGHT~~ YES

11.6 TO RT EDGE PAVEMENT

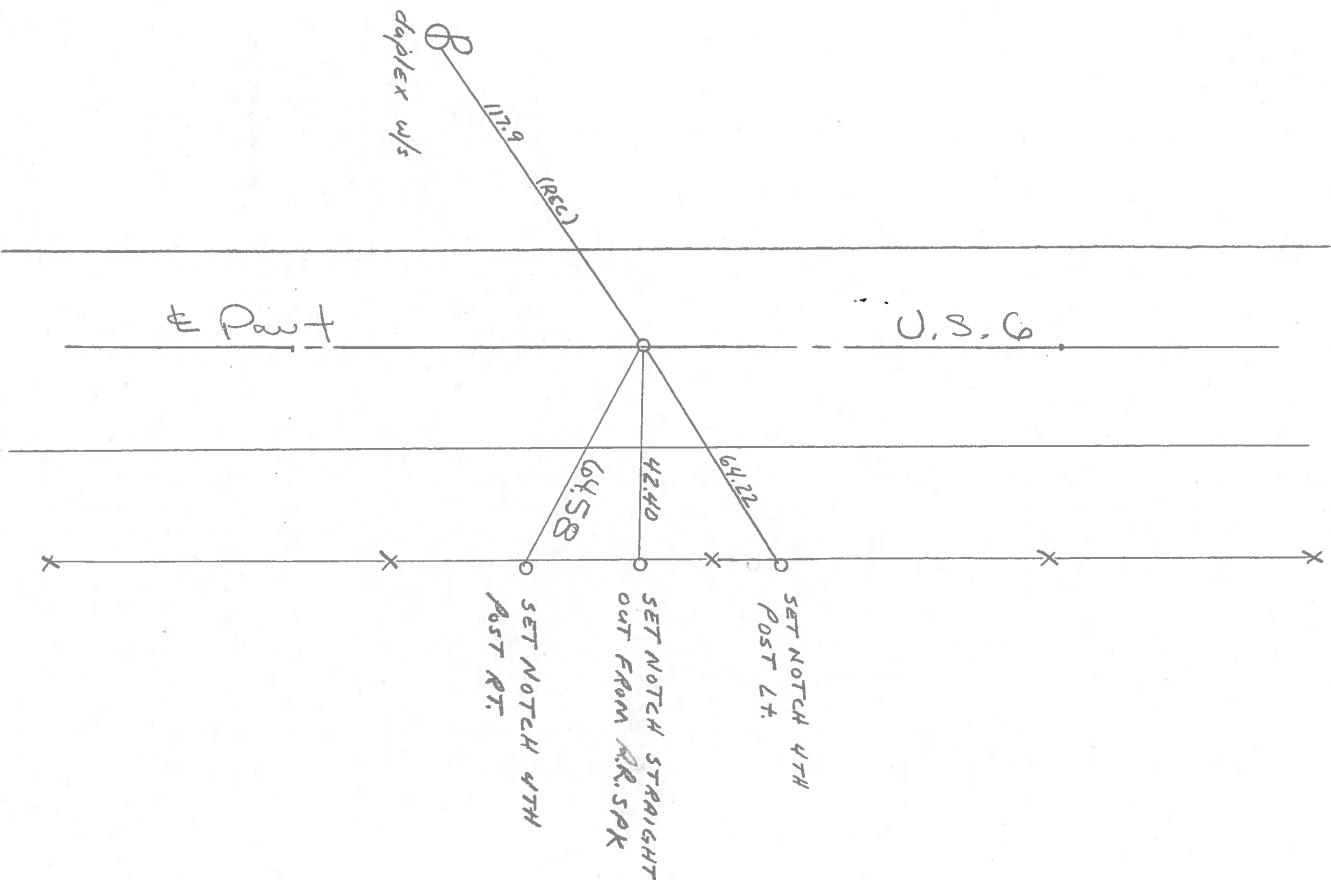
S.L.M. 990 + 24



Fd. RR Spk 4" DEEP
5-30-86

Fd. RR. Spk IN CENTER
OF 24' CONC. PAVT.

SET PK & WASHER
9-25-92
MB



Q.D.O.T. DISTRICT 2 SURVEY OFFICE

SHEET 18 OF

County Williams S.R. # 6

Date 9 May 84

Township Springfield

Weather Cloudy

Section 30-31

Temp. 45°

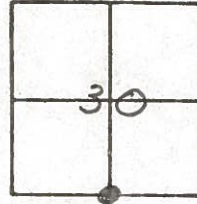
T N, R E

Personnel I. Stone

P. Neuser

R. Michalak

D. Curtis



989+16

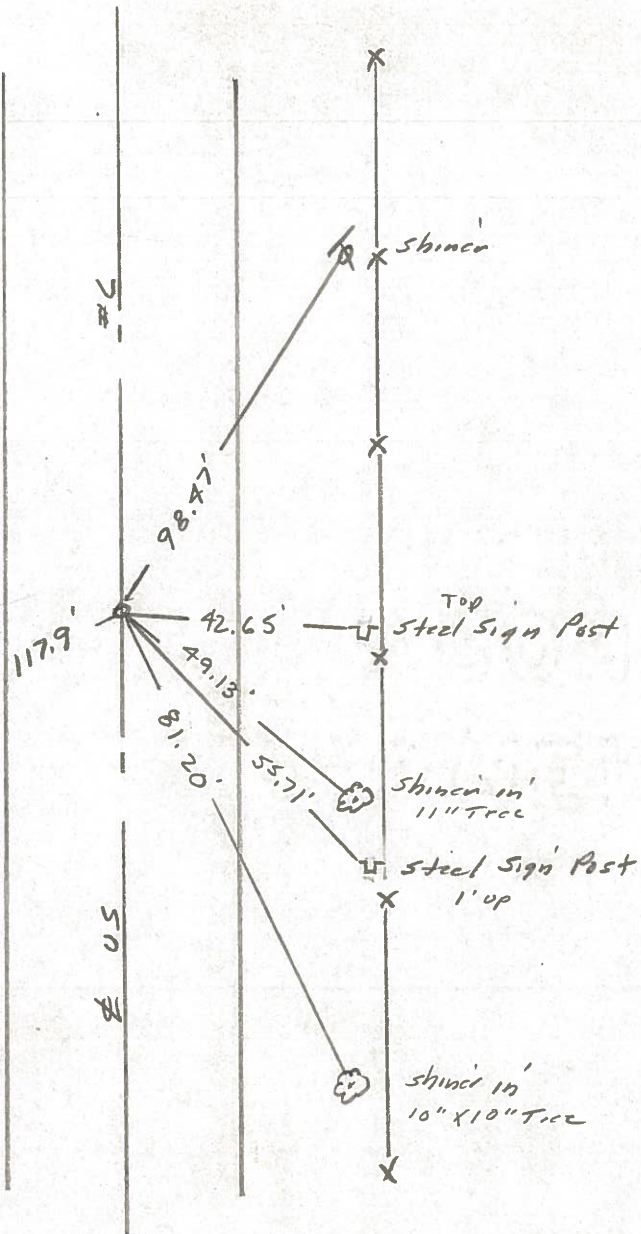
REF. NO. 20-A



Fd. R.R. Spk. 4" Deep -
5-30-86

Fd. RR Spk. in center of
24' Con. put.

duplex w/s



PERSONNEL TITLE PERSONNEL TITLE

Red Beach
W. Knape

COUNTY Williams

DATE Nov 1975

S. R. US 6

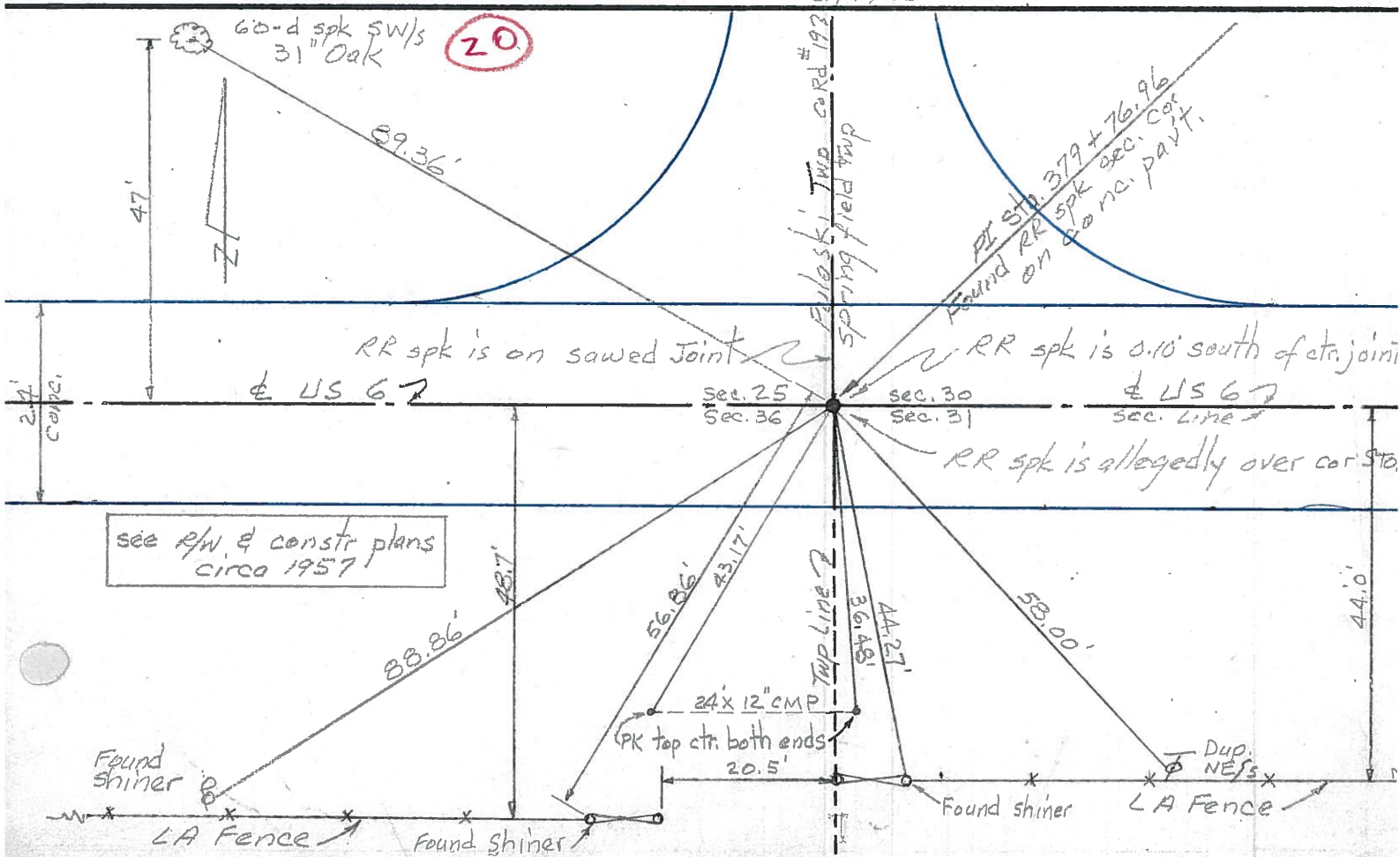
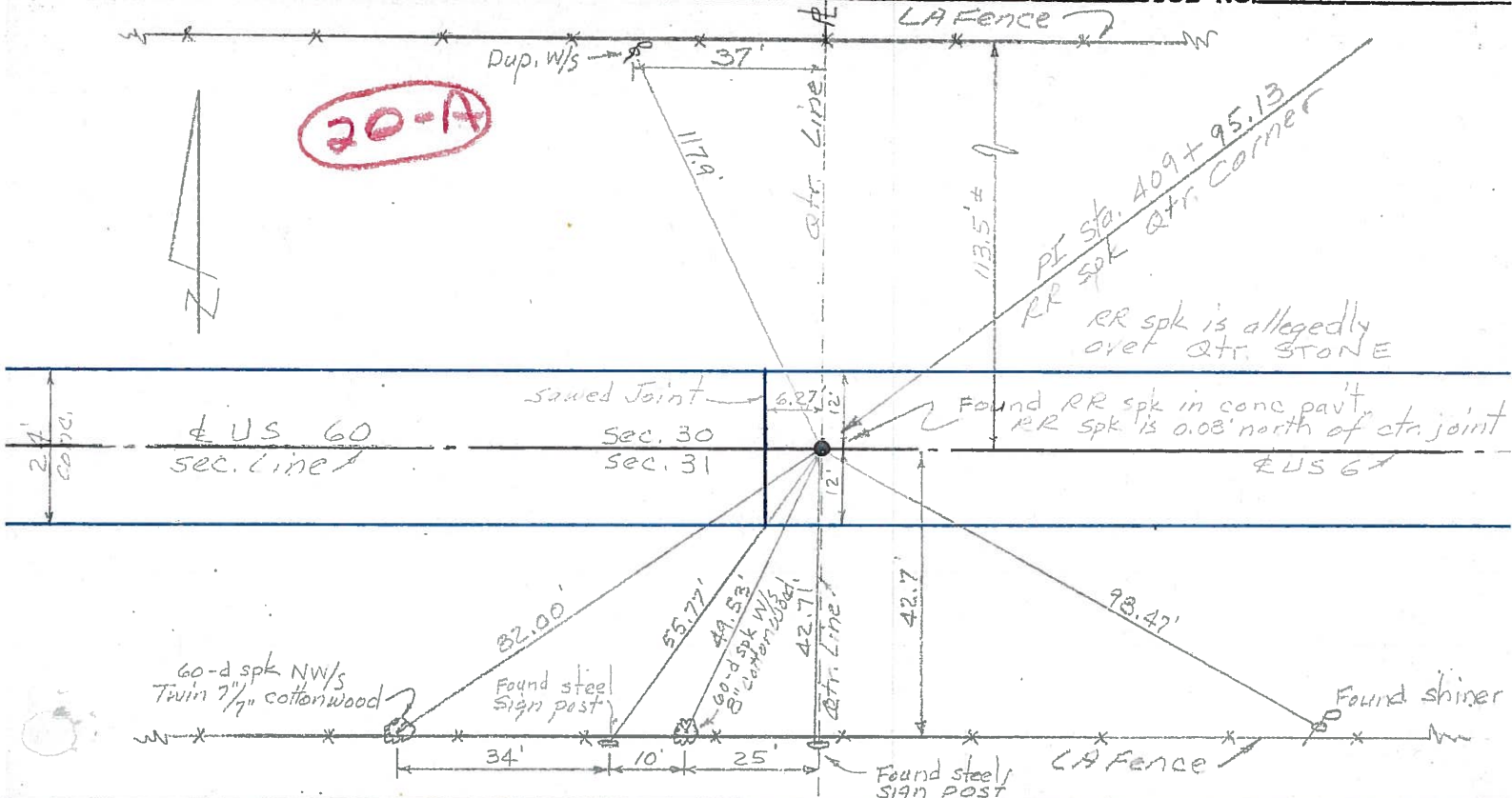
WEATHER

SEC. Springfield Twp.

TEMP

DESCRIPTION control points

JOB NO.

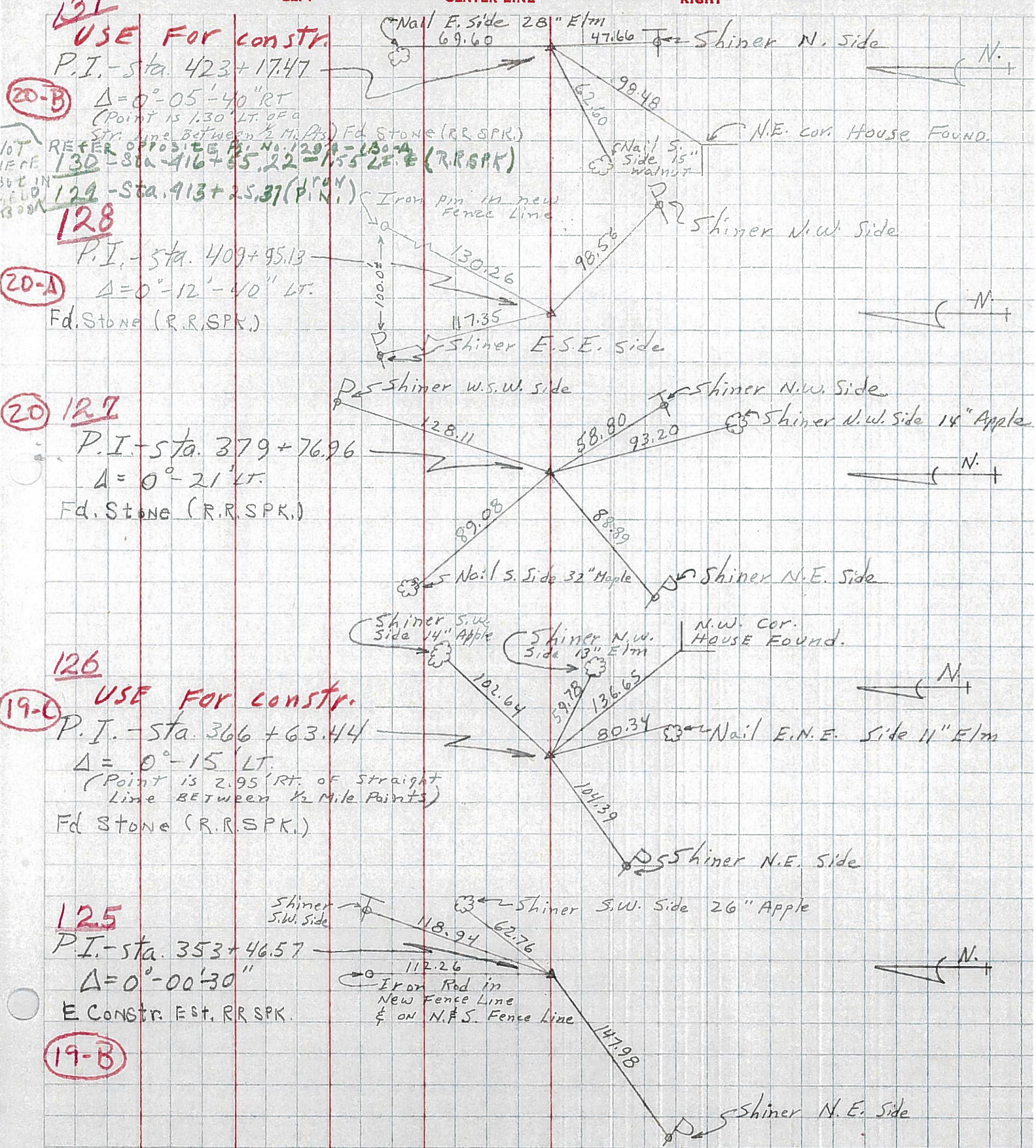


PERSONNEL TITLE PERSONNEL TITLE COUNTY Wi. DATE 2-28-58

S. R. 6 WEATHER _____

SEC. Relocation over Rt. #384 TEMP. 40°

DESCRIPTION Witnesses to Control Points JOB NO. _____



131
USE FOR CONSTR.
 P.I. - sta. 423+17.47

20-B
 $\Delta = 0^\circ - 05' - 40''$ RT
 (Point is 1.30' LT. of a
 Str. line between 1/2 Mile Points)
 Fd. Stone (R.R. SPK.)
 REFER TO PROS. E.E. Pt. No. 129 - 130 - 131
 130 - Sta. 416+65.22 - 131 - 130 - 131
 129 - Sta. 413+25.37 (P.I.N.I.)

128
 P.I. - sta. 409+95.13

20-A
 $\Delta = 0^\circ - 12' - 40''$ LT.
 Fd. Stone (R.R. SPK.)

127
 P.I. - sta. 379+76.96
 $\Delta = 0^\circ - 21'$ LT.
 Fd. Stone (R.R. SPK.)

126
USE FOR CONSTR.
 P.I. - sta. 366+63.44
 $\Delta = 0^\circ - 15'$ LT.
 (Point is 2.95' RT. of straight
 line BETWEEN 1/2 Mile Points)
 Fd. Stone (R.R. SPK.)

125
 P.I. - sta. 353+46.57
 $\Delta = 0^\circ - 00' - 30''$
 E CONSTR. EST. RR SPK.

19-B