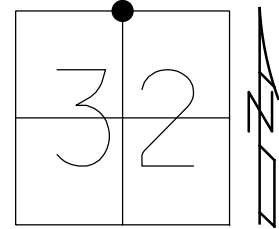


O.D.O.T. DISTRICT 2 SURVEY OFFICE (USE ONLY)

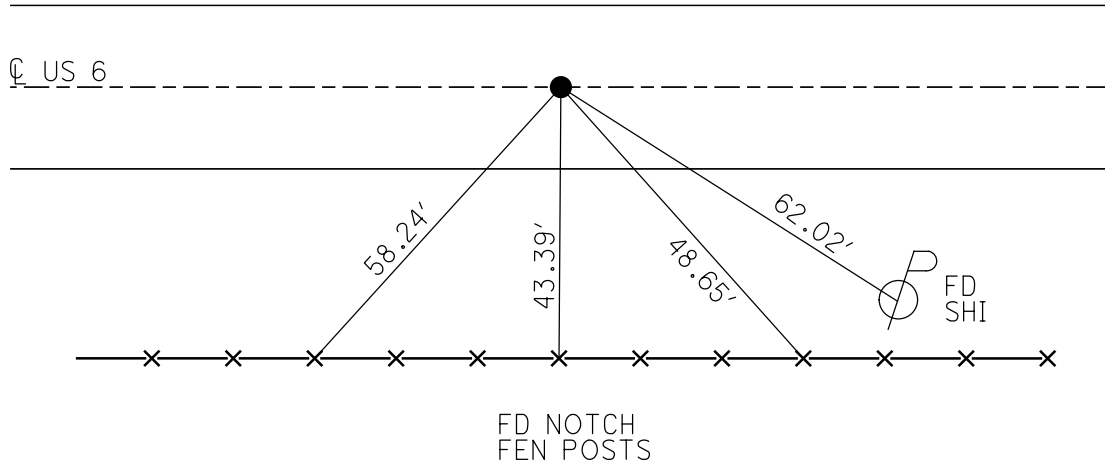
PERSONNEL _____ REFERENCE NO. 21 A SHEET 19 OF 19
 NOTES AUBLE DATE 9/4/19 ROUTE US 6
 H.C. LEU WEATHER SUNNY COUNTY WILLIAMS
 R.C. NASON TEMP. 65° TOWNSHIP SPRINGFIELD
 _____ NIESE SECTION 32
 DWG BY NIESE PID 95792 T 6 N R 4 E

TYPE MONUMENT MAG NAIL
 ON SURFACE - ~~BELOW~~ ON
 OFFSET \odot PAVEMENT ON LT : RT
12.0' TO LT EDGE PAVEMENT
 STATION: 1042+71.97



HORZ. DATUM: NAD83(2011) GEOID: 2012A
 GRID: NORTHING: 652584.459 EASTING: 1439779.103

RECORD:
 SET SM.R.R.SPIKE
 6/2/86
 FD P.K./WASHER
 4/29/02, MB
 SET MAG/WASHER
 8/28/03, MB
 FD MAG NAIL
 REFA21
 2/13/18, JFO
 3/1/19, JFO
 SET MAG/WASHER
 11/14/19, JFO



O.D.O.T. DISTRICT 2 SURVEY OFFICE

PERSONNEL

REFERENCE NO. 21-A

SHEET 19 OF 20

NOTES Barnhisel

H.C. Canterbury

DATE 4-29-02

ROUTE U.S. 6

R.C. Moser

WEATHER Cloudy

COUNTY WILLIAMS

TEMP. +45°

TOWNSHIP SPRINGFIELD

SECTION 32

T 6 N R 4 E

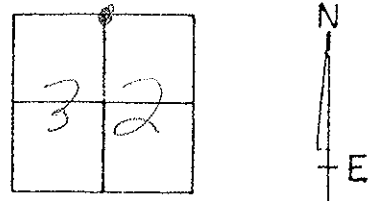
TYPE MONUMENT PK + Washer

ON SURFACE - ~~BELOW~~ on surface

LEFT - ☉ PAV'T. - RIGHT 0.2' LT

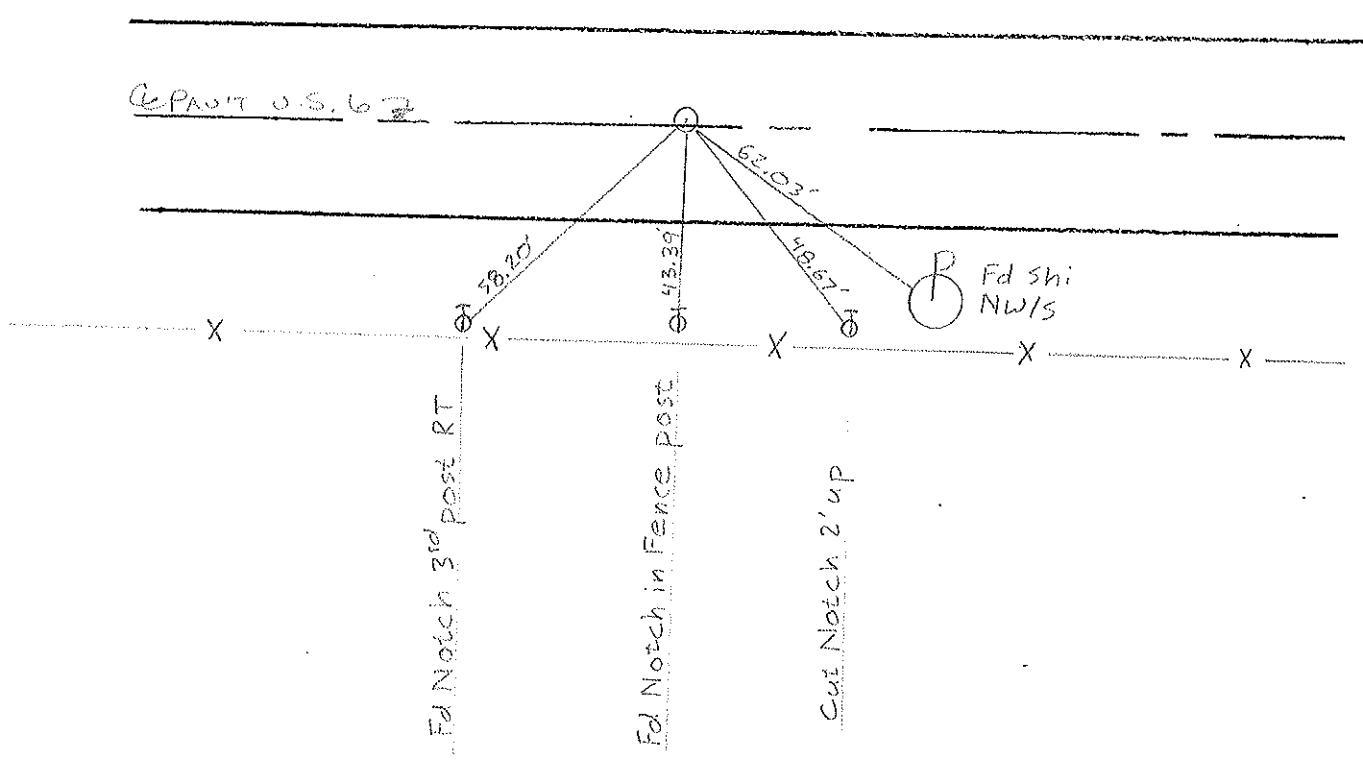
11.8' TO LT EDGE PAVEMENT

S.L.M. 1043144



RECORD; 6-2-86
SET SMALL R.R. SAK

SET MAG NAIL & WASHER
8-28-03
M.B.



O.D.O.T. DISTRICT 2 SURVEY OFFICE

PERSONNEL

REFERENCE NO. 21-A

SHEET 20 OF 22

NOTES VAN DUSEN

H.C. KUSZ

DATE 21 July 1992

ROUTE US 6

R.C. BURNETT

WEATHER SUNNY

COUNTY Williams

TEMP. 65°

TOWNSHIP Springfield

SECTION 32

T 6 N R E

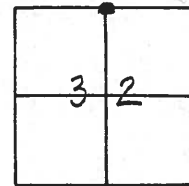
TYPE MONUMENT PK & WASHER

ON SURFACE - ~~BELOW~~ YES

LEFT - ~~PAV'T.~~ RIGHT .2 LT

N.B TO RT EDGE PAVEMENT

S.L.M. 1043+44



SET PK & WASHER
 9-25-92
 MB

Fd. RR Spk. IN CENTER

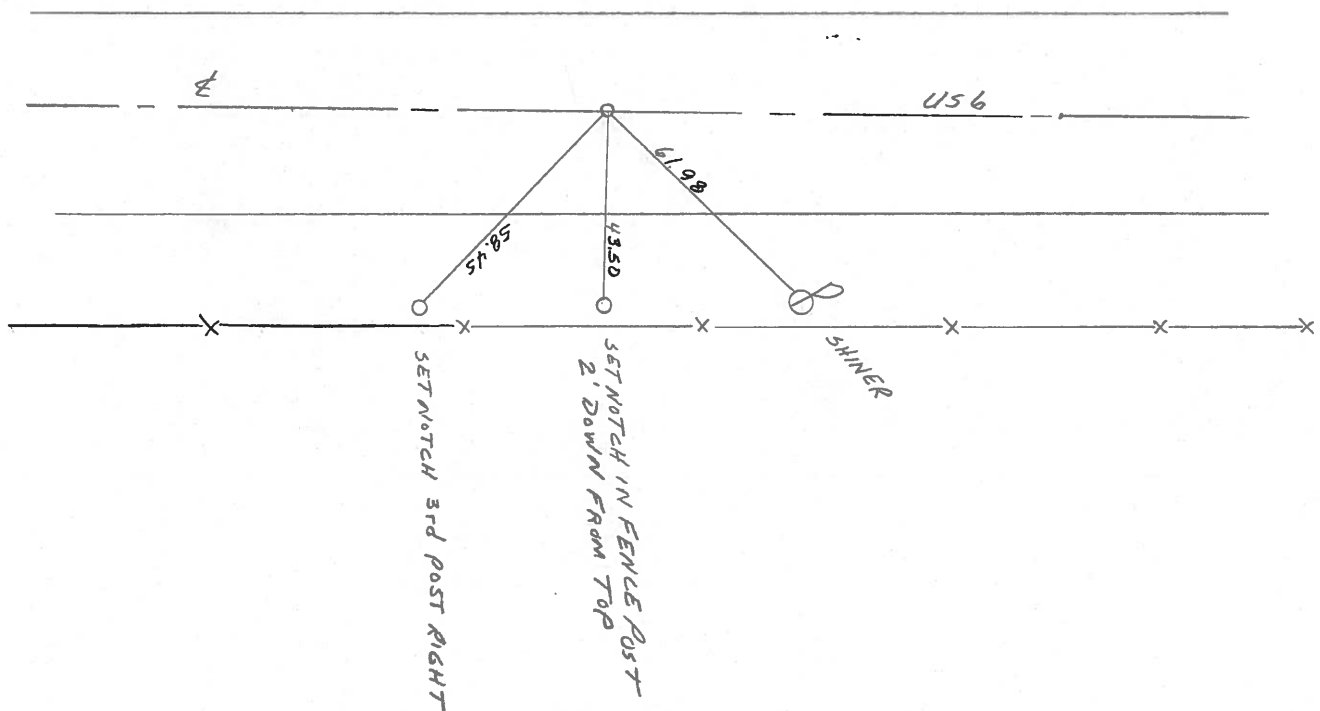
OF 24' CONC. PVMT.

1/4 SEC 29-32

SET 3M RR Spk

TO SURFACE - 6-2-86

Fd. RR Spk. ON SURFACE



County Williams S.R. #6

Date 9 May 84

Township Springfield

Weather Cloudy

Section 32

Temp. 45°

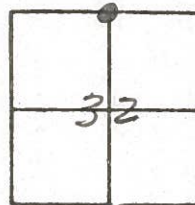
T N, R E

Personnel J. Stone

P. Neuser

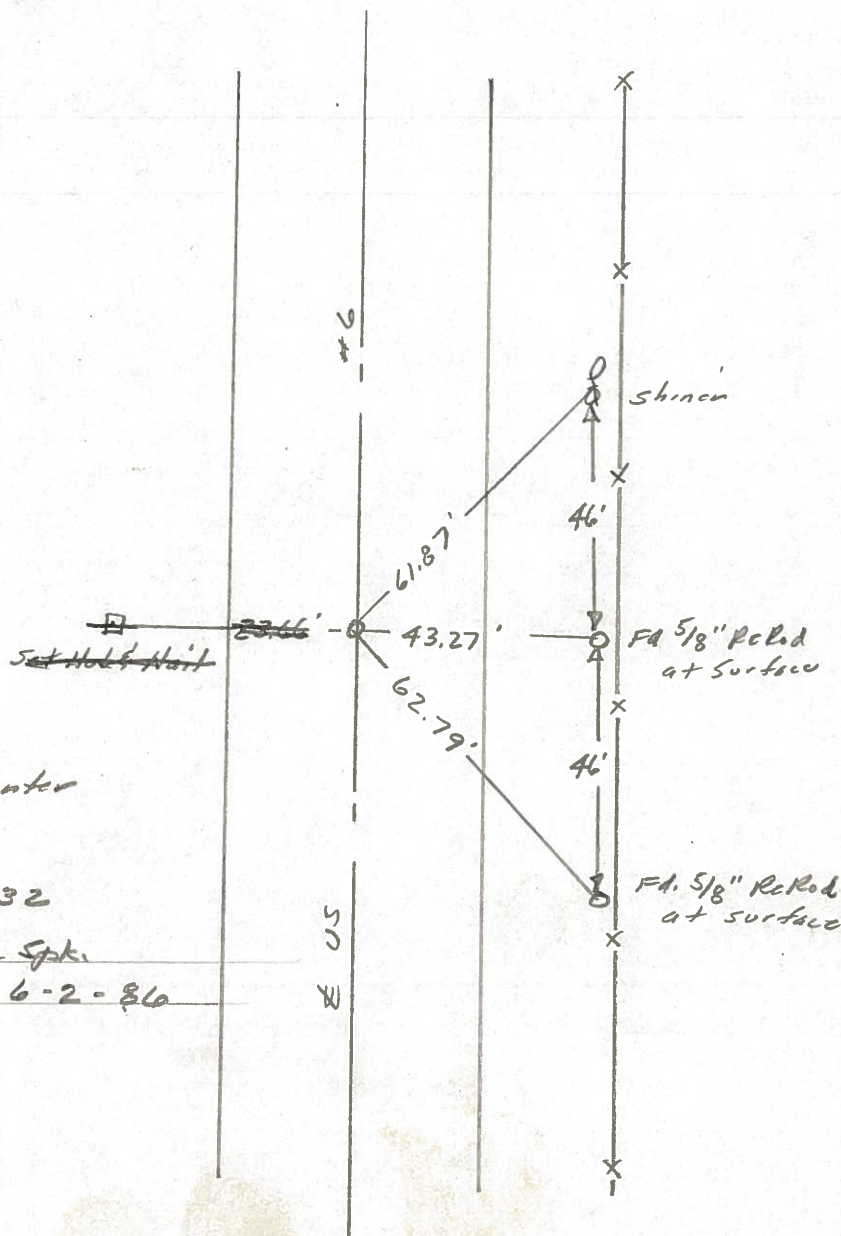
R. Michalak

D. Curtis



1042+36

REF. 140 21-A



Fd. RR Spk in center
of 24' Con. put.

1/4 Cor. Sec. 29-32

Set Small R.R. Spk.

To Surface - 6-2-86

PERSONNEL TITLE PERSONNEL TITLE

Red Beach
W. Knappe

COUNTY Williams DATE Nov 75

S. R. US 6 WEATHER

SEC. Springfield Twp TEMP

DESCRIPTION CONTROL POINTS JOB NO.



22

PK top ctr. west end

48' x 24" CMP

PK top ctr. east end

PI Sta. 489+93.59
RR spk sec. cor.

Found RR spk in conc. pavt. allegedly over cor. stone & US 67

sawed joint

US 67

Sec. Lines

16.45' sec. 29 sec. 32

sec. 28 sec. 33

60-d spk NNW/s 22" Oak

60-d spk ENE/s 17" Walnut

COY'S FARM & Bldgs.

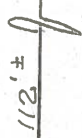
21-A

Brace Posts

LA Fence

PI Sta. 463+15.15
Qtr. Corner

Qtr. Line



sawed joint

sawed joint

40.53'

sec. 29 sec. 32

US 67

sec. 29 sec. 32

US 67

Found RR spk on conc surface

43.8'

63.04'

Qtr. Line

43.37'

61.76'

30" x 5/8" Rods below sod N/s LA Fence

Found shiner

LA Fence

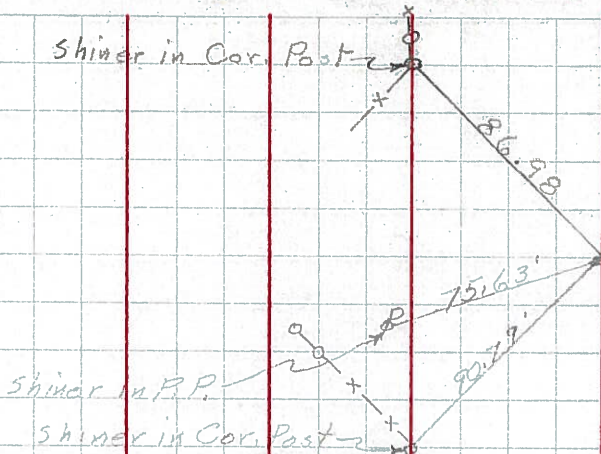
PERSONNEL	TITLE	PERSONNEL	TITLE
Hoover		Young	
Ruffer		Mohler	
Hoff			
Delventhal			

COUNTY Williams DATE 12-8-60
 S. R. 6 WEATHER Pky. Cloudy
 SEC. TEMP. 30°

DESCRIPTION LEFT CENTER LINE RIGHT JOB NO.

132.

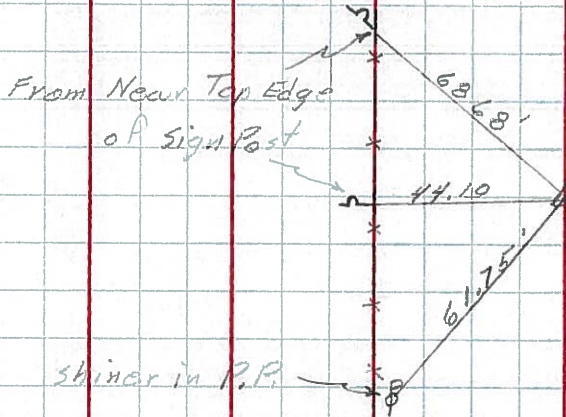
(21)



Sta. 436+38.87
 Found R.R. Spk.
 Int. Co. Rd. 20

135.

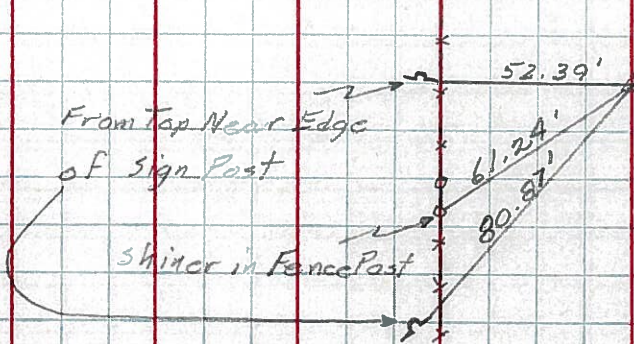
(21-A)



Sta. 463+15.15
 Found R.R. Spk.

140.

(23)



Sta. 592+30.10
 Found R.R. Spk.



PERSONNEL TITLE PERSONNEL TITLE

Louys

COUNTY Wi.

DATE 2-28-58

S. R. 6

WEATHER

SEC. Relocation Over Rt. #384 TEMP. 40°

DESCRIPTION Witnesses to Control Points

JOB NO.

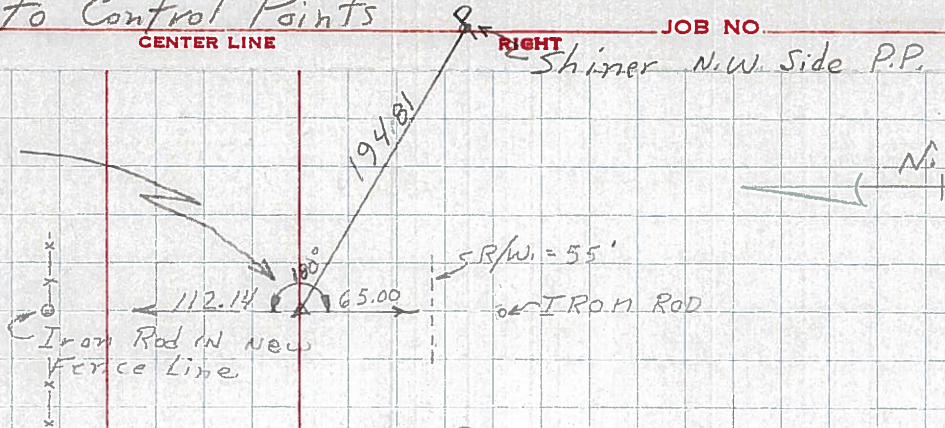
RIGHT Shiner N.W. Side P.P.

140.

P.I. - Sta. 542 + 30.10

$\Delta = 0^\circ - 03' RT.$

Fd Stone (R.R. SPK.)



23

139

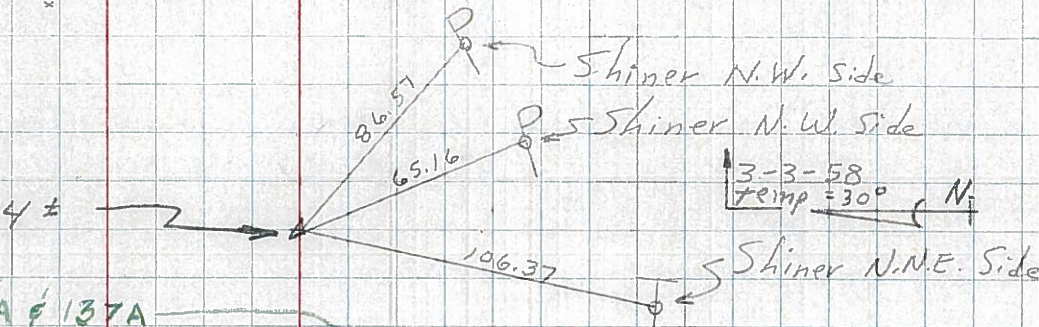
P.O.T. - Sta. 523 + 44 ±

Rt. #191

REFER - OPPOSITE P₃ - 138A & 137A

138 - Sta. 504 + 00 P.O.T. (IRON BOLT ON Φ)

137 - Sta. 500 + 00 P.O.T. (TACKED HUB ON Φ)



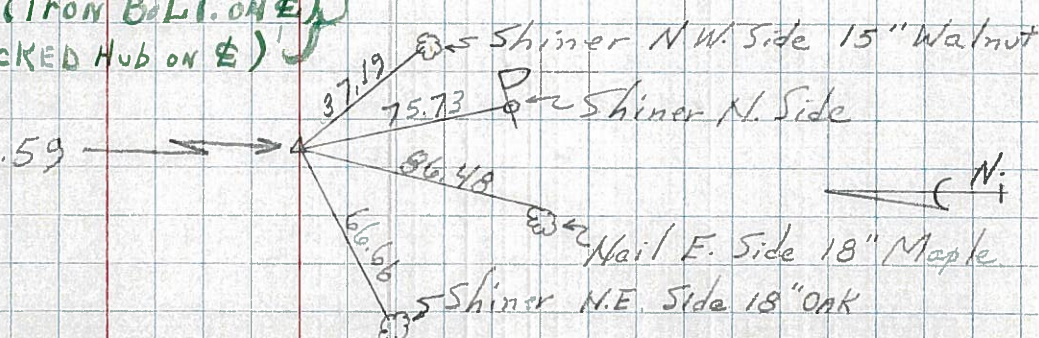
22-A

136

P.I. - Sta. 489 + 93.59

$\Delta = 0^\circ - 01' - 20" LT.$

Fd Stone (R.R. SPK.)

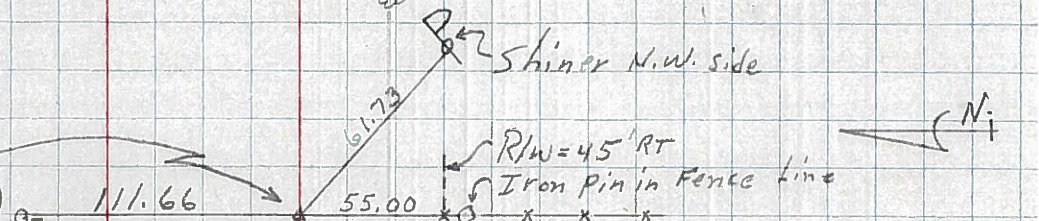


22

135

P.I. - Sta. 463 + 15.15

$\Delta = 0^\circ - 08' LT.$ (Fd IRON PIN)



21-A

134 - Sta. 449 + 79.69 - NO ANGLE - (STONE - RR. SPK.)

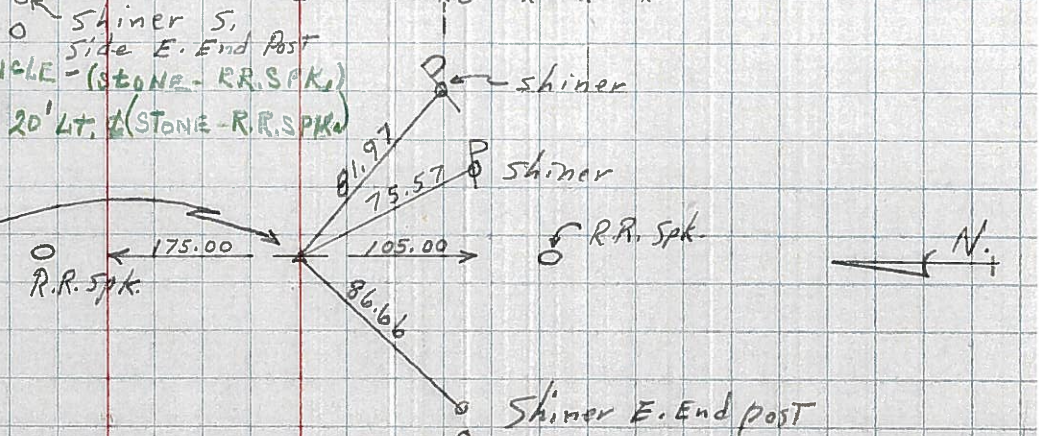
133 - Sta. 444 + 10.83 - 0, 20' LT. (STONE - RR. SPK.)

132

P.I. - Sta. 436 + 38.87

$\Delta = 0^\circ - 14' - 20" RT$

(EST R.R. SPK.)



21

REFER OPPOSITE P₃ 134A & 133A
NOT TO BE USED FOR FIELD BOOK