

O.D.O.T. DISTRICT 2 SURVEY OFFICE (USE ONLY)

PERSONNEL

REFERENCE NO. 22

SHEET 1 OF 9

NOTES JAMES DATE 3/1/19
 H.C. O'DONNELL WEATHER SUNNY
 R.C. JAMES TEMP. 27°

ROUTE US 6
 COUNTY WILLIAMS
 TOWNSHIP SPRINGFIELD
 SECTION 32
 T 6 N R 4 E

DWG BY NIESE PID 95997

TYPE MONUMENT MAG NAIL

ON SURFACE - ~~BELOW~~ ON

OFFSET 0.4' LT : ~~RT~~

11.3' TO LT EDGE PAVEMENT

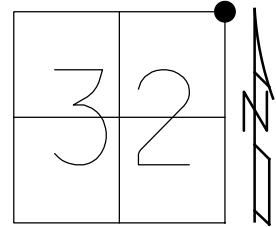
STATION: 1069+50.46

HORIZ.DATUM: NAD83 2011

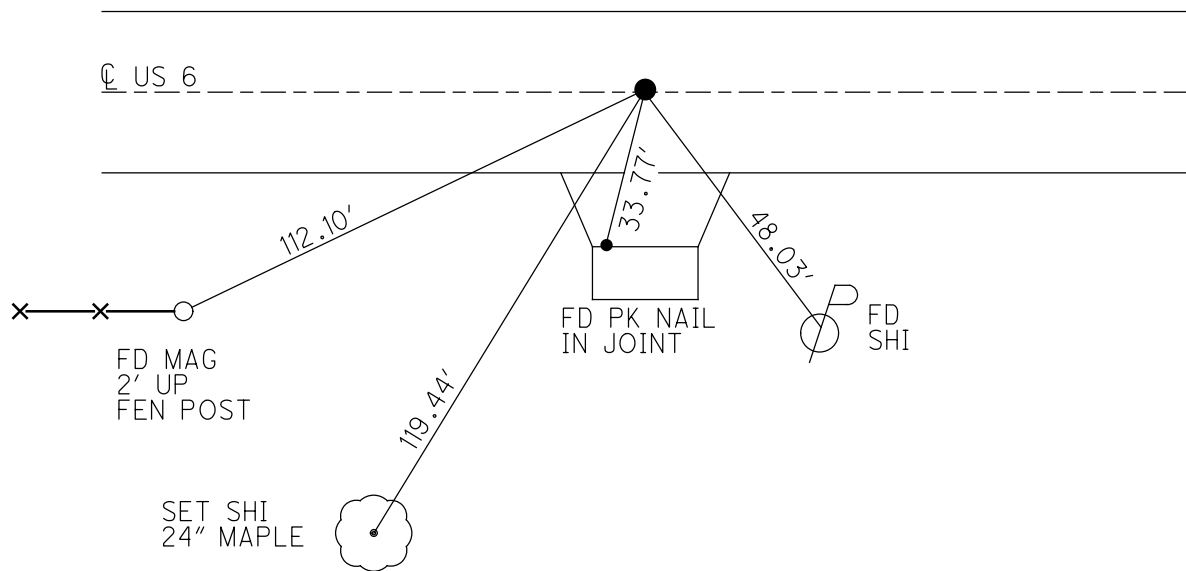
GEOID: NAVD88 2012A

GRID: NORTHING: 652541.677

EASTING: 1442457.259



RECORD:
 SET SM.R.R.SPIKE
 6/2/86
 FD P.K./WASHER
 4/29/02, MB
 SET MAG/WASHER
 8/28/03, MB
 FD MAG/WASHER
 REF22
 2/14/18, JFO
 FD MAG NAIL
 3/1/19, JFO
 SET MAG/WASHER
 1/14/21, JFO



O.D.O.T. DISTRICT 2 SURVEY OFFICE

PERSONNEL _____

REFERENCE NO. 22

SHEET 20 OF 20

NOTES Barnhisel

H.C. Centerbury

DATE 4-29-02

ROUTE U.S. 6

R.C. Moser

WEATHER Cloudy

COUNTY WILLIAMS

TEMP. +45°

TOWNSHIP SPRINGFIELD

SECTION 32

T6 N R 4 E

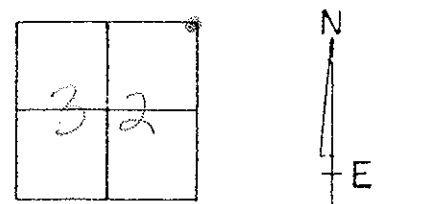
TYPE MONUMENT PK + Washes

ON SURFACE - BELOW on surface

LEFT - PAV'T. - RIGHT 0.4' LT

11.3' TO LT EDGE PAVEMENT

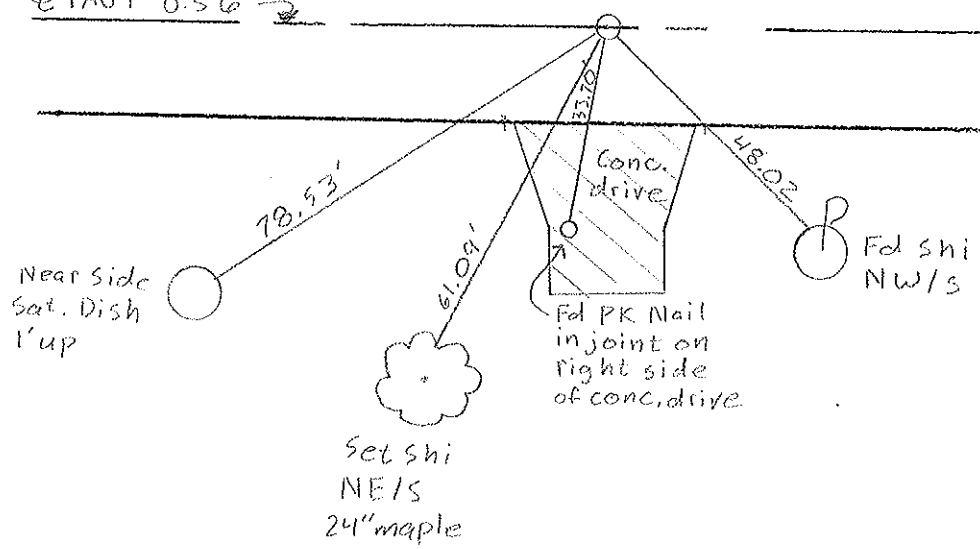
S.L.M. 1070 + 23



RECORD: 6-2-06
SET SMALL R.R. SPIKE

SET MAG NAIL & WASHES
8-28-03
MB

PAV'T U.S. 6 →



O.D.O.T. DISTRICT 2 SURVEY OFFICE

PERSONNEL

REFERENCE NO. 22

SHEET 21 OF 22

NOTES VAN DUSEN

H.C. KUSZ

DATE 21 July 1992

ROUTE 456

R.C. BURNETT

WEATHER SUNNY

COUNTY Williams

TEMP. 65°

TOWNSHIP Springfield

SECTION 28-29-32-33

T. 6 N. R

TYPE MONUMENT PK & WASHER

ON SURFACE - BELOW YES

LEFT - 0 PAV'T. - RIGHT 0.4 LT

11.9 TO LT EDGE PAVEMENT

S.L.M. 1070+23

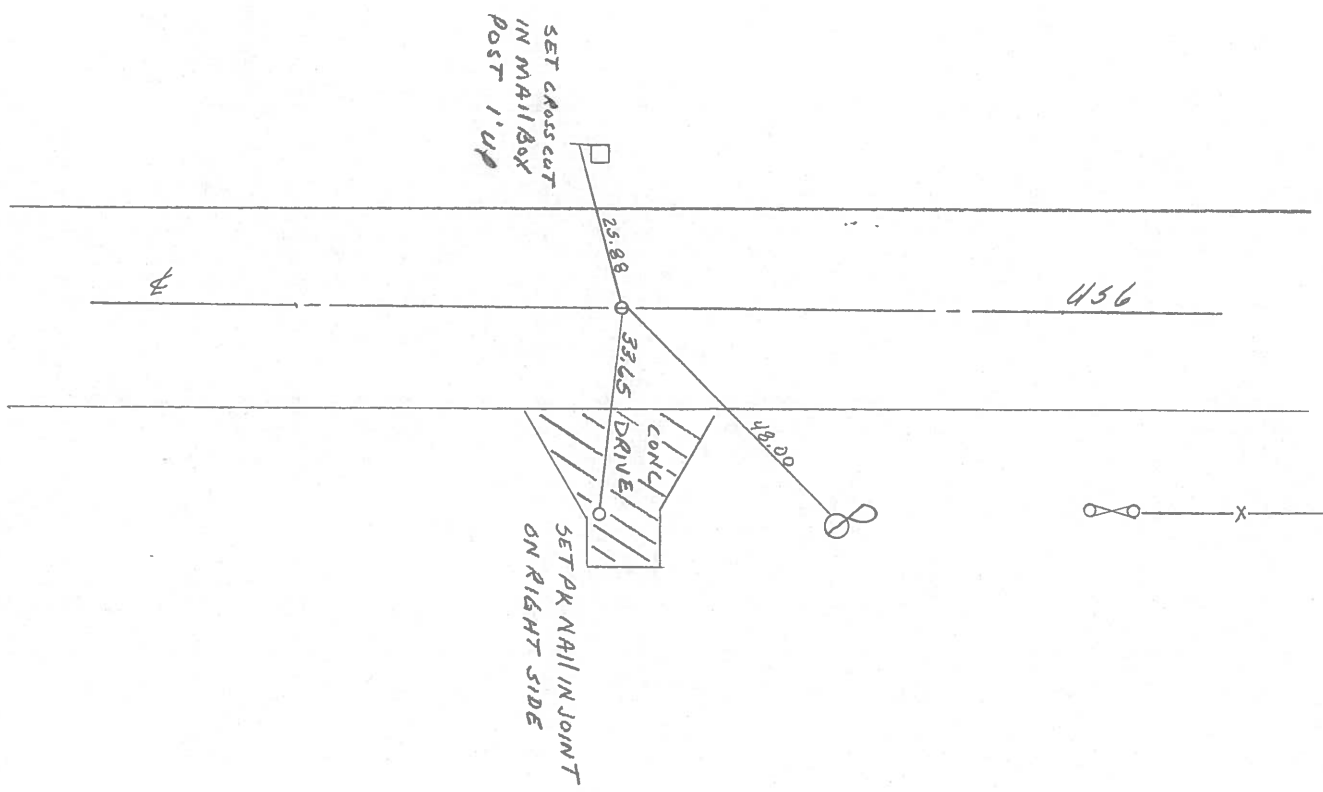
29	28
32	33



Fd RR Spk. IN CENTER
OF 24' CONC. PAVT.

SET SM. RR Spk
To Surface - 6-2-86

SET PK & WASHER
9-25-92
MB



County Williams S.R. #6

Date 9 May 84

Township Springfield

Weather Cloudy

Section 28-29-32-33

Temp. 45°

T N, R E

Personnel L. Stone

P. Newser

R. Michalak

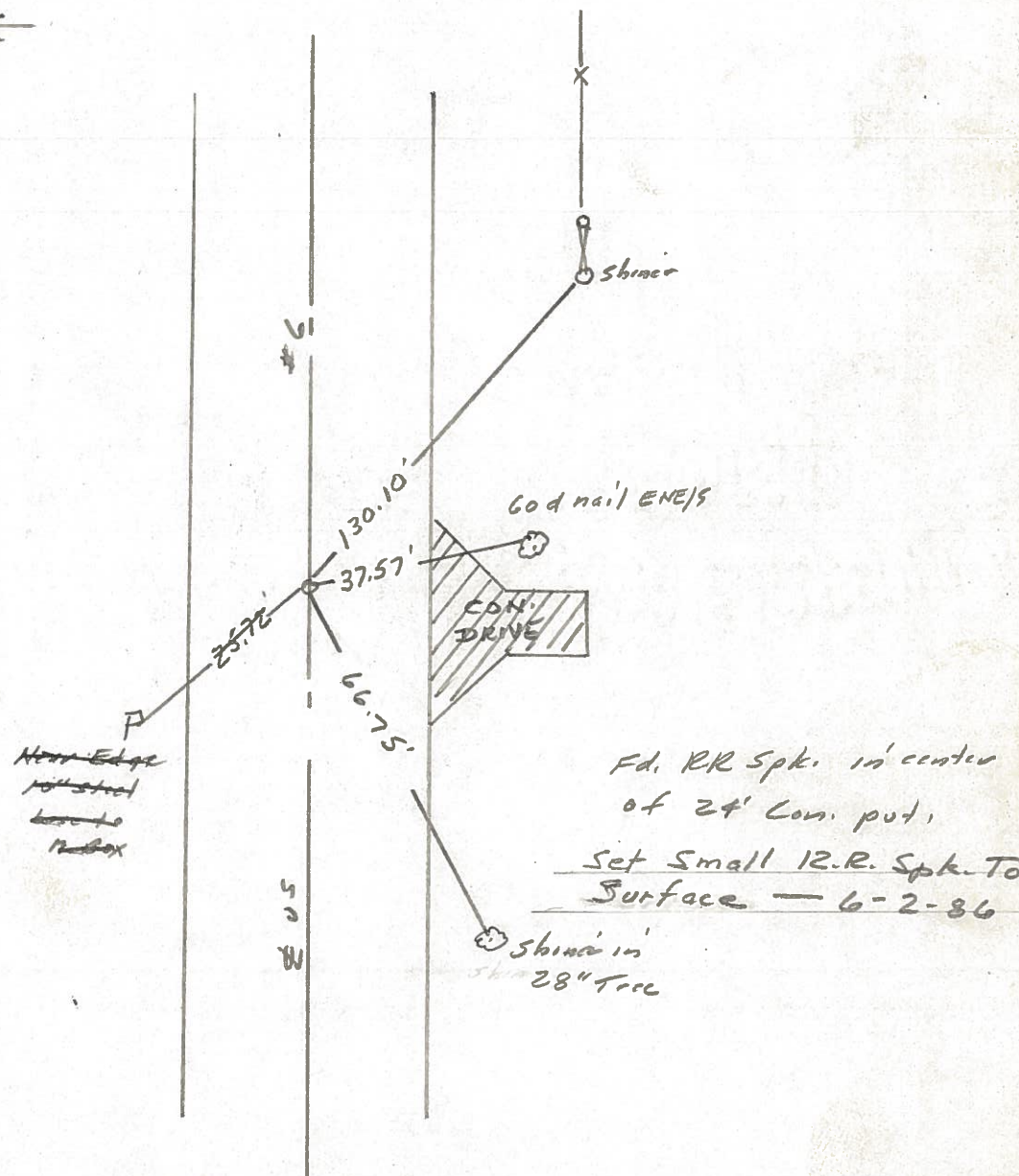
D. Curtis

29	28
32	33

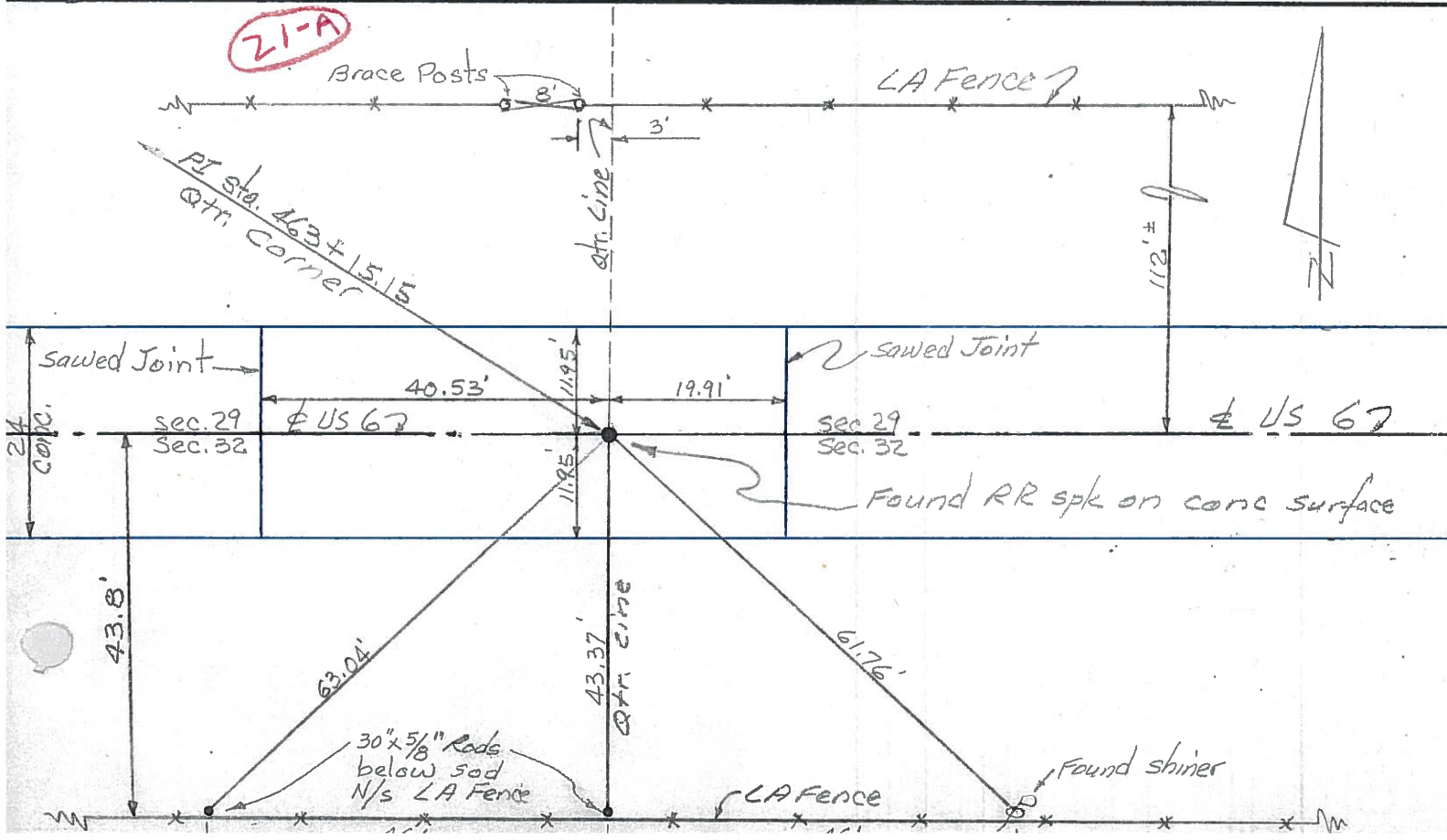
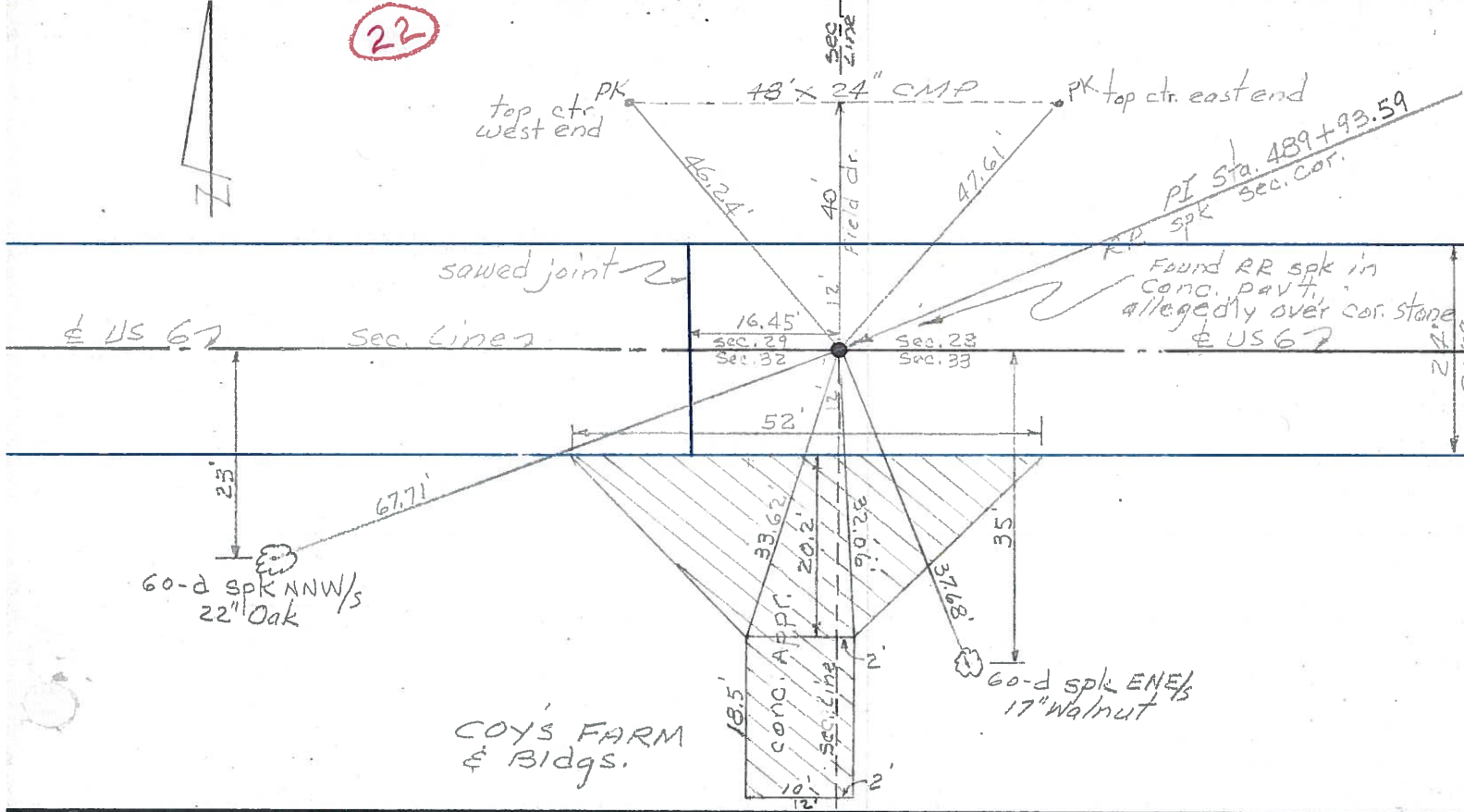


1069+10

REF. No. 22



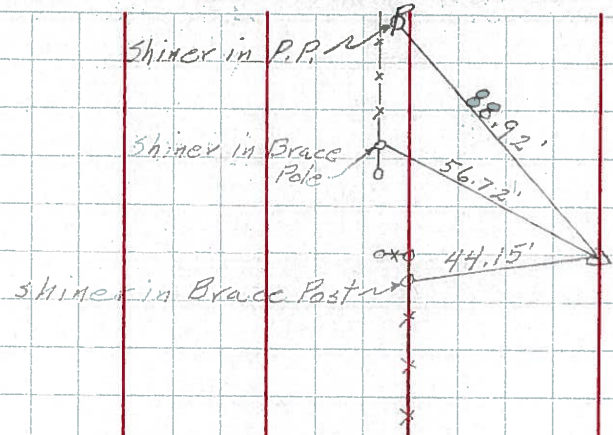
PERSONNEL	TITLE	PERSONNEL	TITLE	COUNTY	DATE	WEATHER
Red Beach				Williams	Nov 75	
W. Krape				US 6		
				Springfield Twp		
DESCRIPTION CONTROL POINTS				JOB NO.		



PERSONNEL	TITLE	PERSONNEL	TITLE	COUNTY	DATE	WEATHER	TEMP.
Hoover		Young		Williams	12-8-60	ptly. Cloudy	30°
Ruffer		Mohlar		S. R. 6			
Hoff				SEC.			
Delventhal							

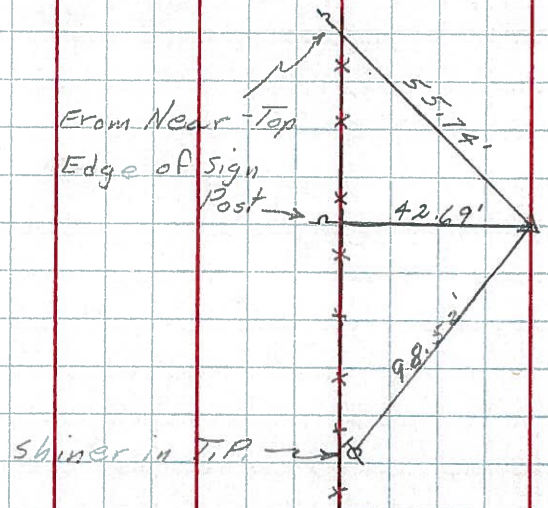
DESCRIPTION	LEFT	CENTER LINE	RIGHT	JOB NO.
-------------	------	-------------	-------	---------

127.
(20)



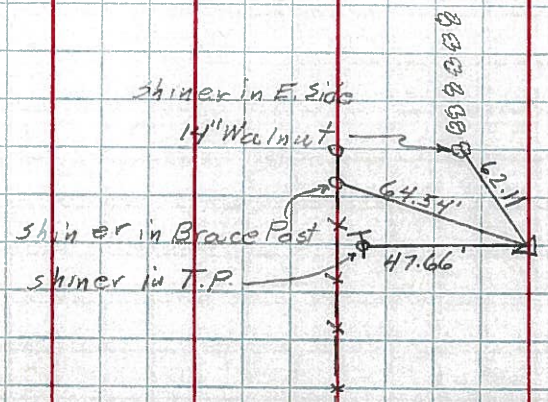
Sta. 379+76.96
Found R.R. Spk
Int. Co. Rd. 19

136.
(22)



Sta. 489+93.59
Found R.R. Spk.

131.
(20-B)



Sta. 423+17.47
Found R.R. Spk.

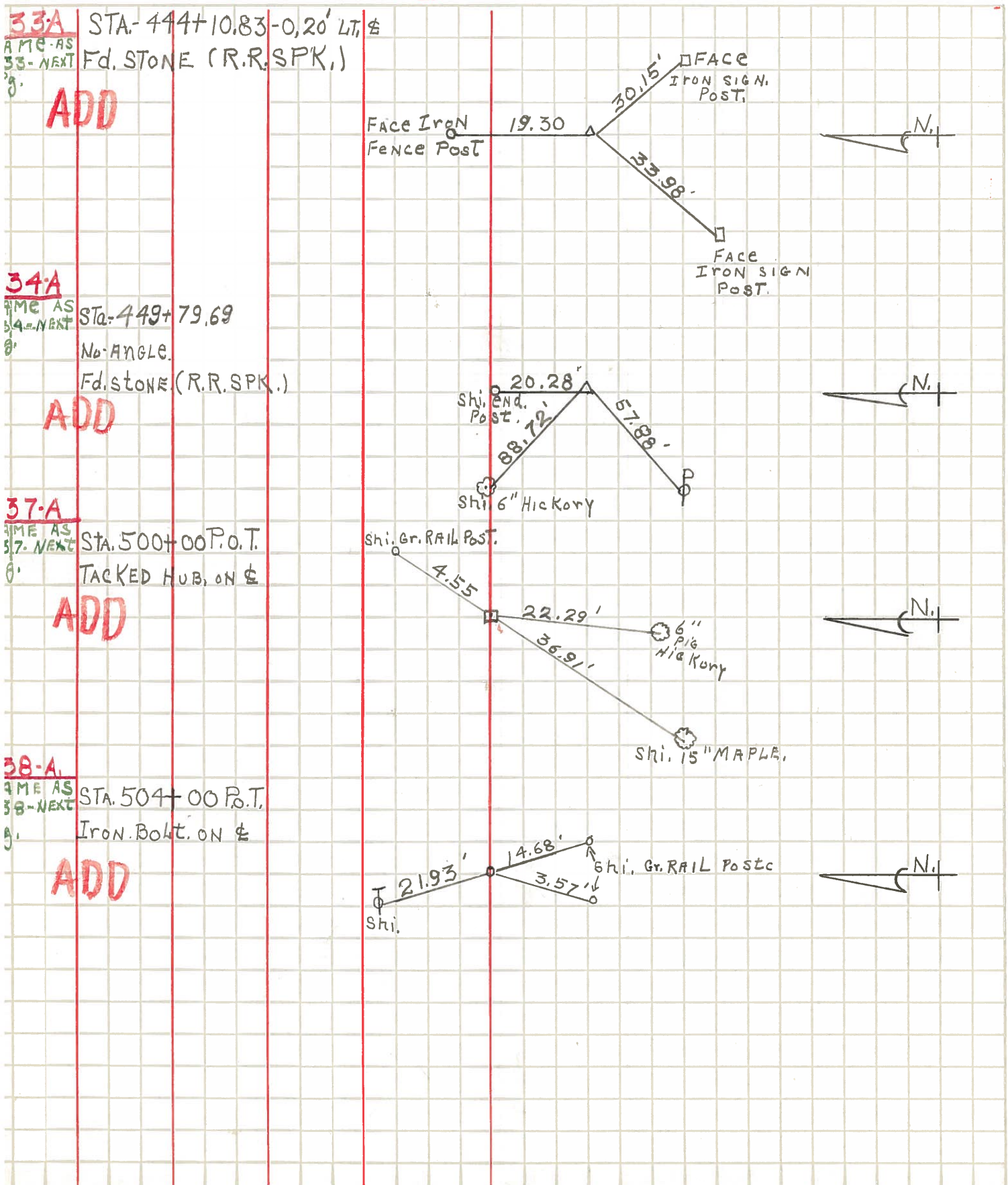
PERSONNEL TITLE PERSONNEL TITLE
Tewart _____

COUNTY WILLIAMS DATE 5-25-61

S. R. # 6 WEATHER _____

SEC. RELOCATION OVER R.T. 384 TEMP. _____

DESCRIPTION WITNESSES TO CONTROL POINTS JOB NO. _____



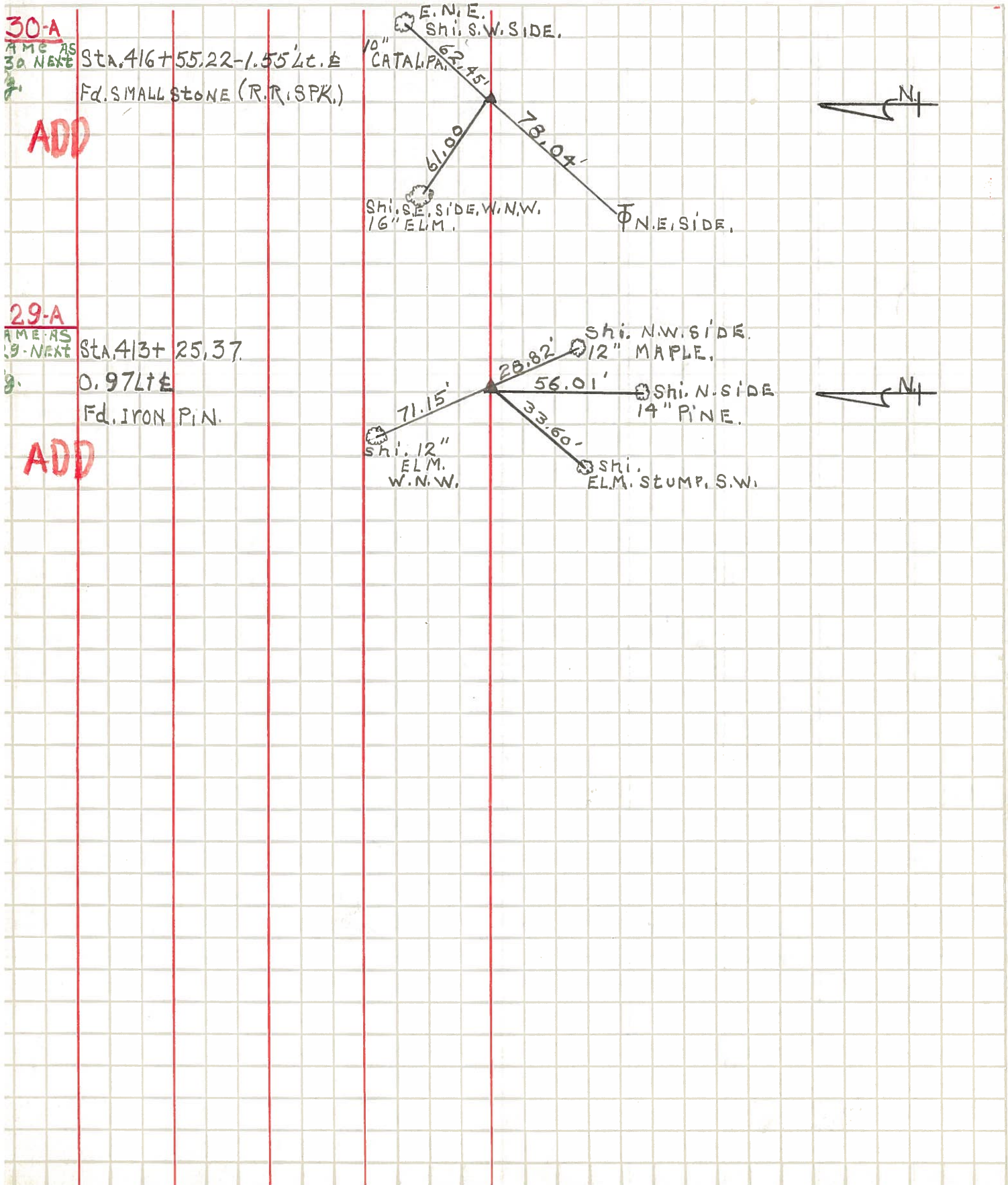
PERSONNEL TITLE PERSONNEL TITLE
teewart, _____

COUNTY WILLIAMS, DATE 5-26-61

S. R. # 6 WEATHER _____

SEC. Relocation over Rt. 384 TEMP. _____

DESCRIPTION Witnesses to Control Points, JOB NO. _____



PERSONNEL TITLE PERSONNEL TITLE

Louys

COUNTY Wi.

DATE 2-28-58

S. R. 6

WEATHER

SEC. Relocation Over Rr. #384 TEMP. 40°

DESCRIPTION Witnesses to Control Points

LEFT

CENTER LINE

RIGHT

JOB NO.

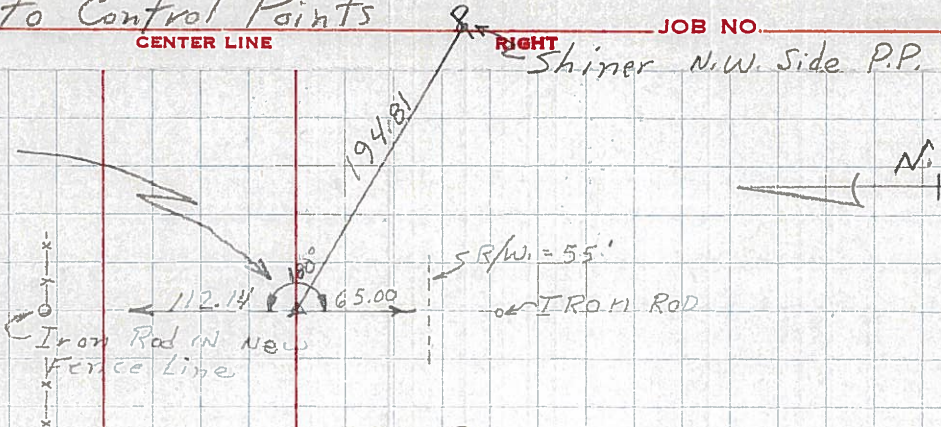
Shiner N.W. Side P.P.

140.

P.I. - Sta. 542 + 30.10

$\Delta = 0^\circ - 03' RT.$

Fd Stone (R.R. SPK.)



23

139

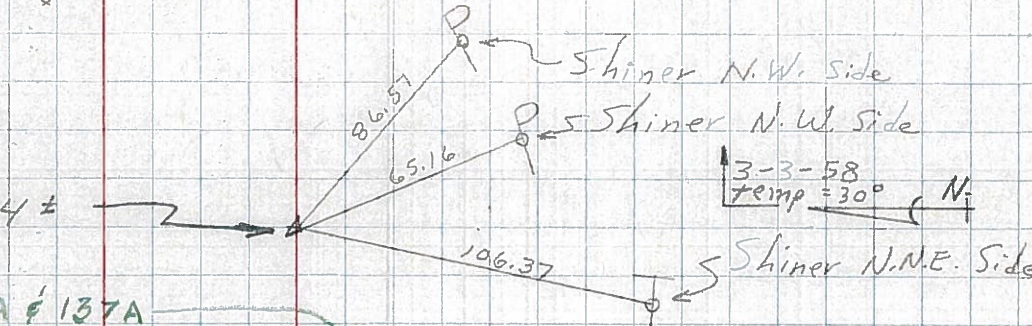
P.O.T. - Sta. 523 + 44 ±

RT #191

REFER - OPPOSITE Pg. 138A & 137A

138 - Sta. 504 + 00 P.O.T. (IRON BOLT ON Φ)

137 - Sta. 500 + 00 P.O.T. (TACKED HUB ON Φ)



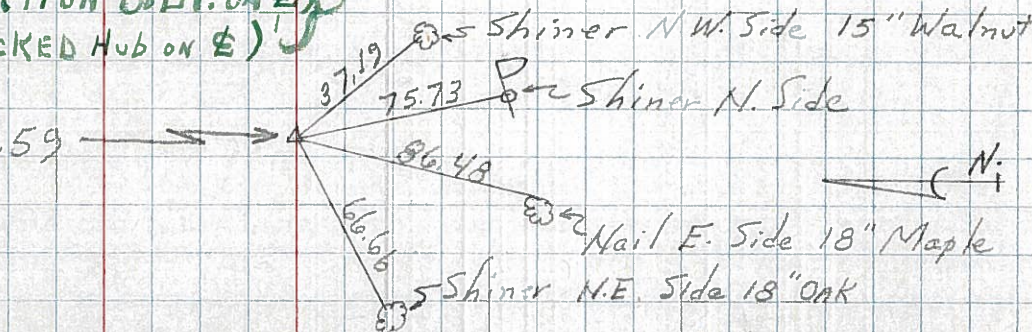
22-A

136

P.I. - Sta. 489 + 93.59

$\Delta = 0^\circ - 01' - 20'' LT.$

Fd Stone (R.R. SPK.)



22

21-A

135

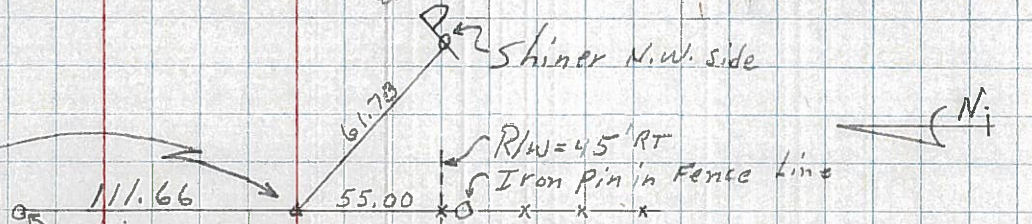
P.I. - Sta. 463 + 15.15

$\Delta = 0^\circ - 08' LT.$ (Fd IRON PIN)

REFER OPPOSITE Pg. 134A & 133A

134 - Sta. 449 + 79.69 - NO ANGLE - (STONE - RR. SPK.)

133 - Sta. 444 + 10.83 - 0, 20' LT. (STONE - R.R. SPK.)



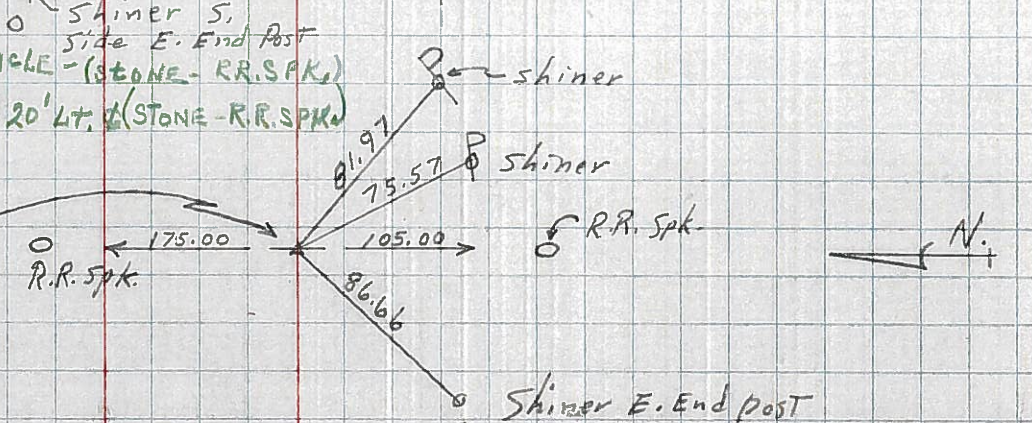
NOT HERE IN YEL BOOK

132

P.I. - Sta. 436 + 38.87

$\Delta = 0^\circ - 14' - 20'' RT$

(EST R.R. SPK.)



21