

O.D.O.T. DISTRICT 2 SURVEY OFFICE (USE ONLY)

PERSONNEL

REFERENCE NO. 22 A

SHEET 2 OF 9

NOTES JAMES

DATE 3/1/19

ROUTE US 6

H.C. O'DONNELL

WEATHER SUNNY

COUNTY WILLIAMS

R.C. JAMES

TEMP. 27°

TOWNSHIP SPRINGFIELD

SECTION 33

DWG BY NIESE

PID 95997

T 6 N R 4 E

TYPE MONUMENT D.N.F. P.K.SHANK

ON SURFACE - ~~BELOW~~ ON

OFFSET \varnothing PAVEMENT 1.0' LT : ~~RT~~

- TO - EDGE PAVEMENT

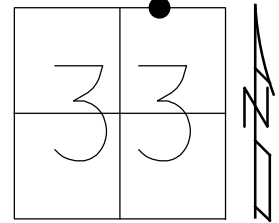
STATION: 1102+99

HORZ.DATUM: NAD83 2011

GEOID: NAVD88 2012A

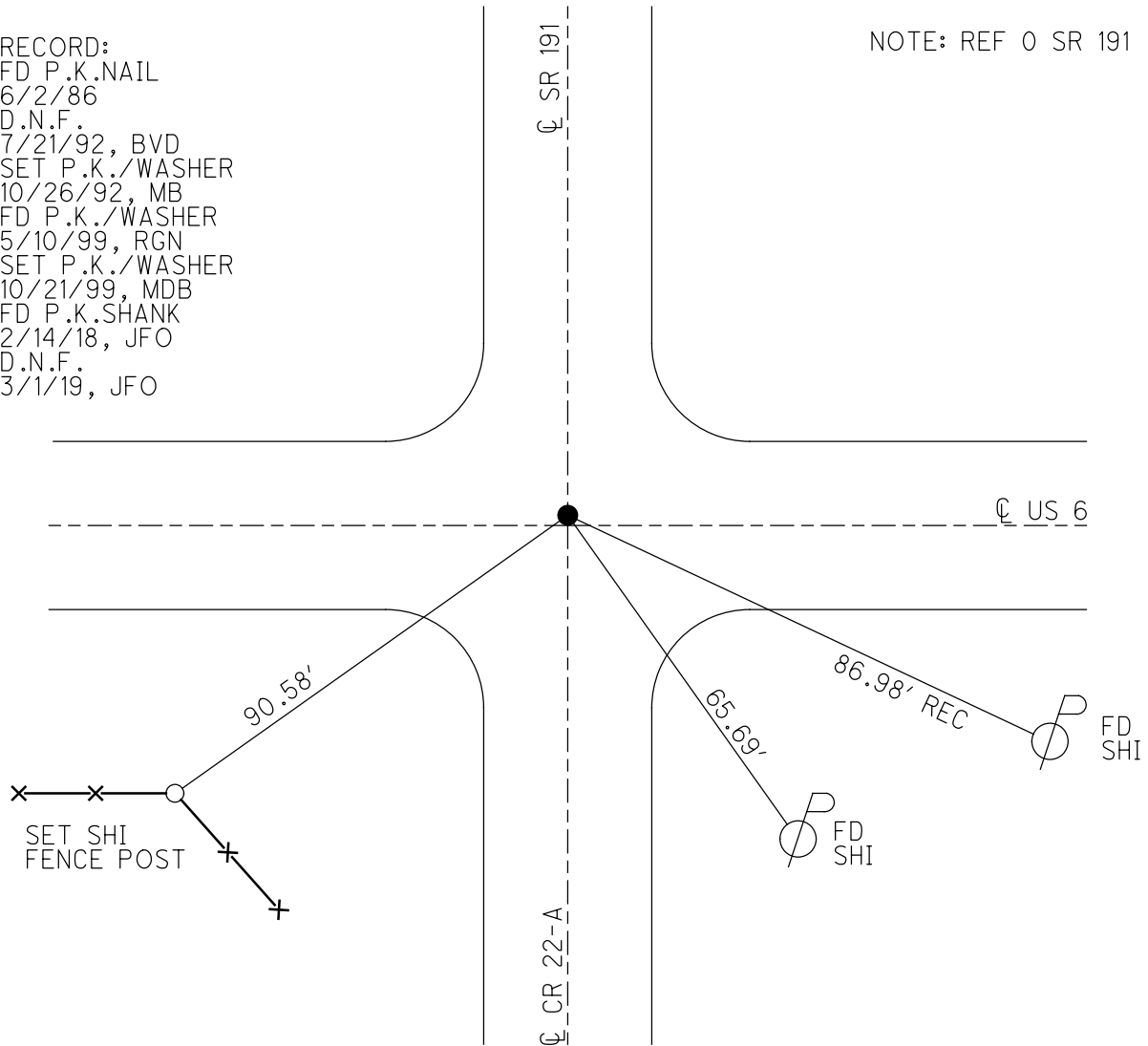
GRID: NORTHING: -

EASTING: -



RECORD:
 FD P.K.NAIL
 6/2/86
 D.N.F.
 7/21/92, BVD
 SET P.K./WASHER
 10/26/92, MB
 FD P.K./WASHER
 5/10/99, RGN
 SET P.K./WASHER
 10/21/99, MDB
 FD P.K.SHANK
 2/14/18, JFO
 D.N.F.
 3/1/19, JFO

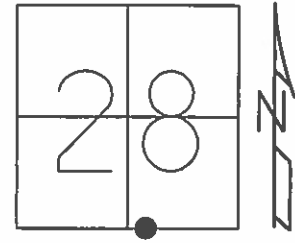
NOTE: REF 0 SR 191



O.D.O.T. DISTRICT 2 SURVEY OFFICE (USE ONLY)

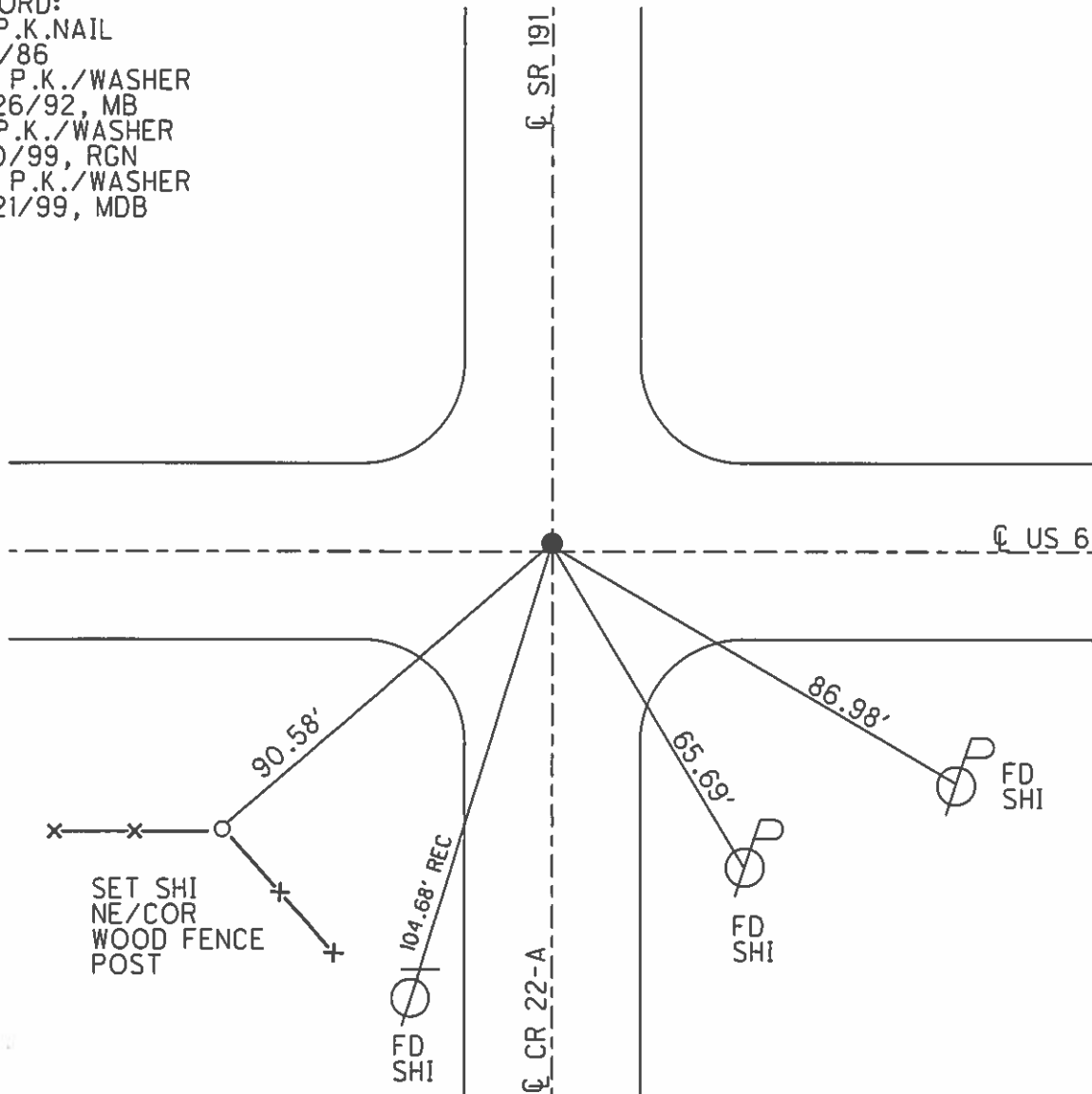
PERSONNEL _____ REFERENCE NO. 0 SHEET 1 OF 34
 NOTES NUHFER DATE 4/18/06 ROUTE SR 191, US 6
 H.C. MIKLOVIC WEATHER FAIR COUNTY WILLIAMS
 R.C. HANKE TEMP. 57° TOWNSHIP SPRINGFIELD
 _____ SECTION 28
 _____ T 6 N R 4 E

TYPE MONUMENT P.K./WASHER
 ON SURFACE - ~~BELOW~~ ON
 LEFT - ☉ PAV'T - RIGHT ON, 1' LT ☉ US 6
- TO - EDGE PAVEMENT
 S.L.M. 0+00, US 6 33+616.5



GRID: NORTHING: _____ EASTING: _____

RECORD:
 FD P.K.NAIL
 6/2/86
 SET P.K./WASHER
 10/26/92, MB
 FD P.K./WASHER
 5/10/99, RGN
 SET P.K./WASHER
 10/21/99, MDB



O.D.O.T. DISTRICT 2 SURVEY OFFICE

PERSONNEL _____

REFERENCE NO. 22-A

SHEET 1 OF 7

NOTES CANTERBURY

H.C. ROUSOS

R.C. BARNHISEL

DATE 5-10-99

WEATHER FAIR

TEMP. +75°

ROUTE US. 6

COUNTY Williams

TOWNSHIP Springfield

SECTION 33

T6 N R 4 E

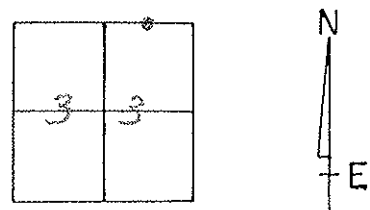
TYPE MONUMENT PK & WASHER

ON SURFACE - BELOW YES

LEFT - PAV'T. - RIGHT 1' LT & ON E N & S.

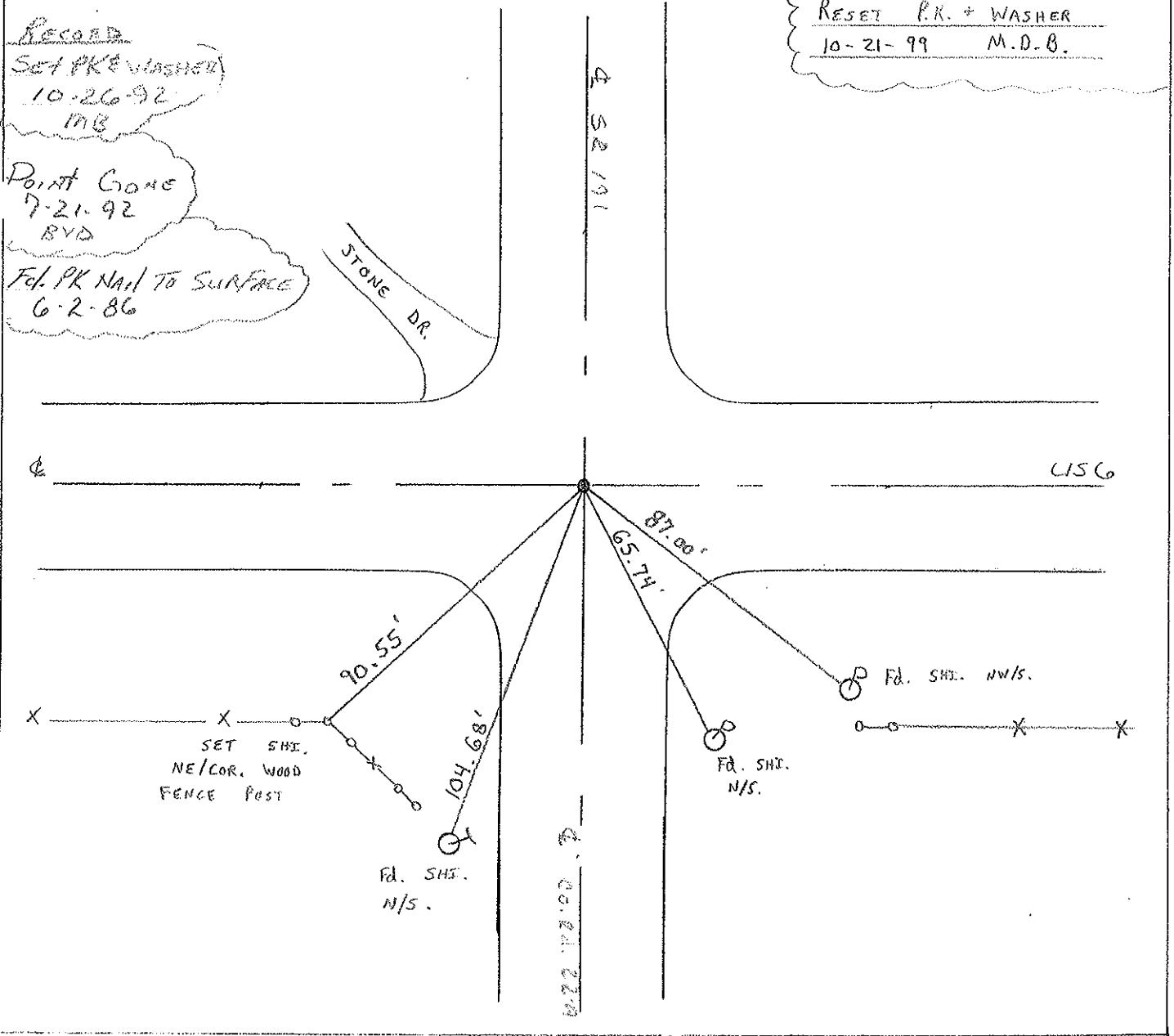
TO EDGE PAVEMENT

S.L.M. 33+616.5 SLK



RECORD
SET PK & WASHER
10-26-92
MB
POINT GONE
7-21-92
BYD
Fd. PK NAIL TO SURFACE
6-2-86

RESET P.K. + WASHER
10-21-99 M.D.B.



Resurfaced 1999

O.D.O.T. DISTRICT 2 SURVEY OFFICE

PERSONNEL

REFERENCE NO. 22-A

SHEET 22 OF 22

NOTES YAN DUSEN

H.C. KUSZ

R.C. BURNETT

DATE 21 July 1992

WEATHER SUNNY

TEMP. 65°

ROUTE US 6

COUNTY Williams

TOWNSHIP Springfield

SECTION 33

T 6 N R

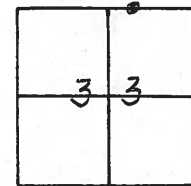
TYPE MONUMENT PK & WASHER

ON SURFACE - ~~BELOW~~ YES

LEFT - PAV'T. - RIGHT

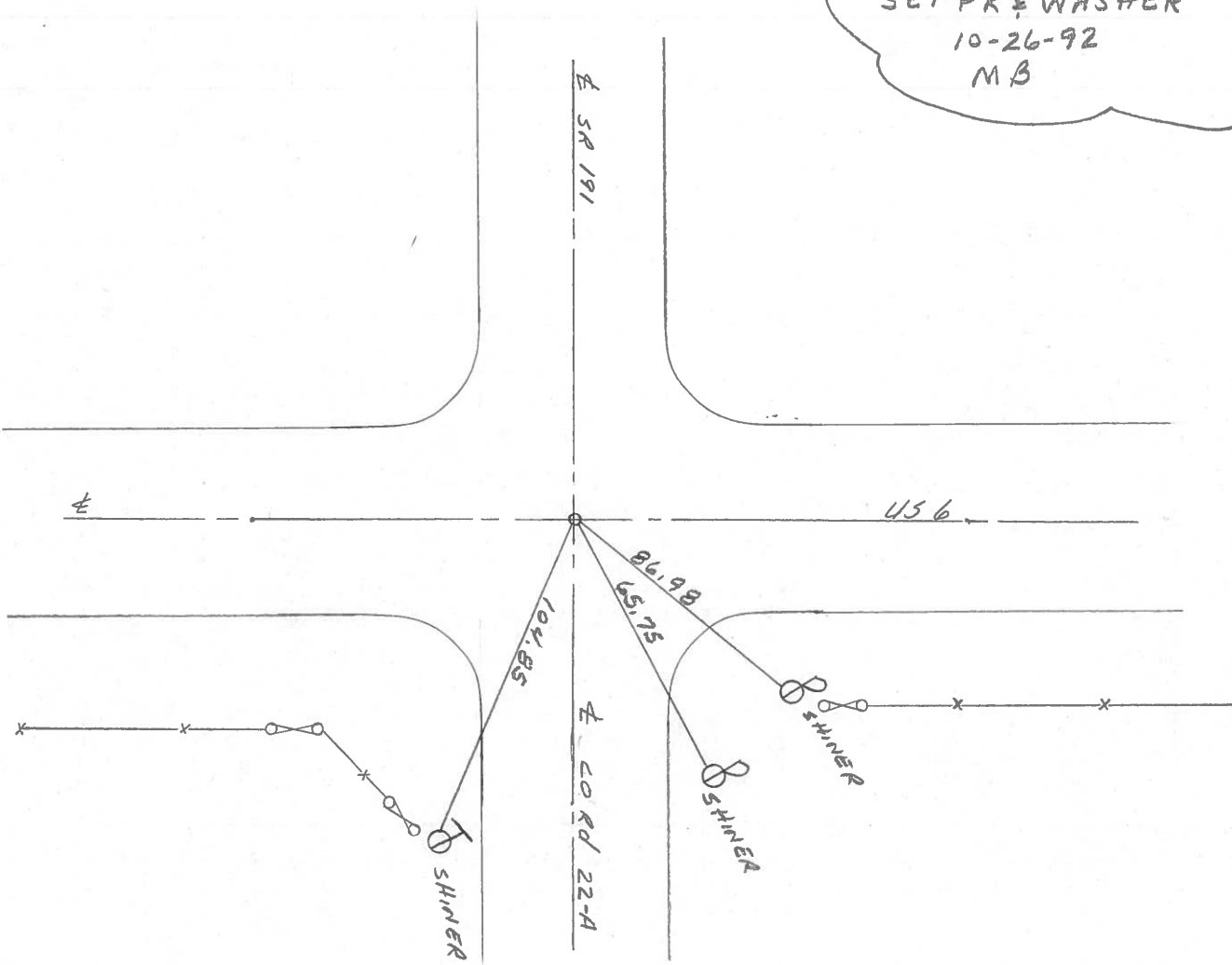
 TO EDGE PAVEMENT

S.L.M.



Fd. PK NAIL TO SURFACE
6-2-86

POINT GONE
7-21-92
BVD
SET PK & WASHER
10-26-92
MB



Q.D.O.T. DISTRICT 2 SURVEY OFFICE

County Williams S.R. #6

Date 9 May 84

Township Springfield

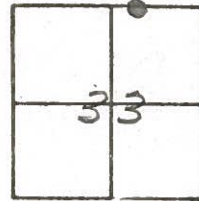
Weather Cloudy

Section 33

Temp. 45°

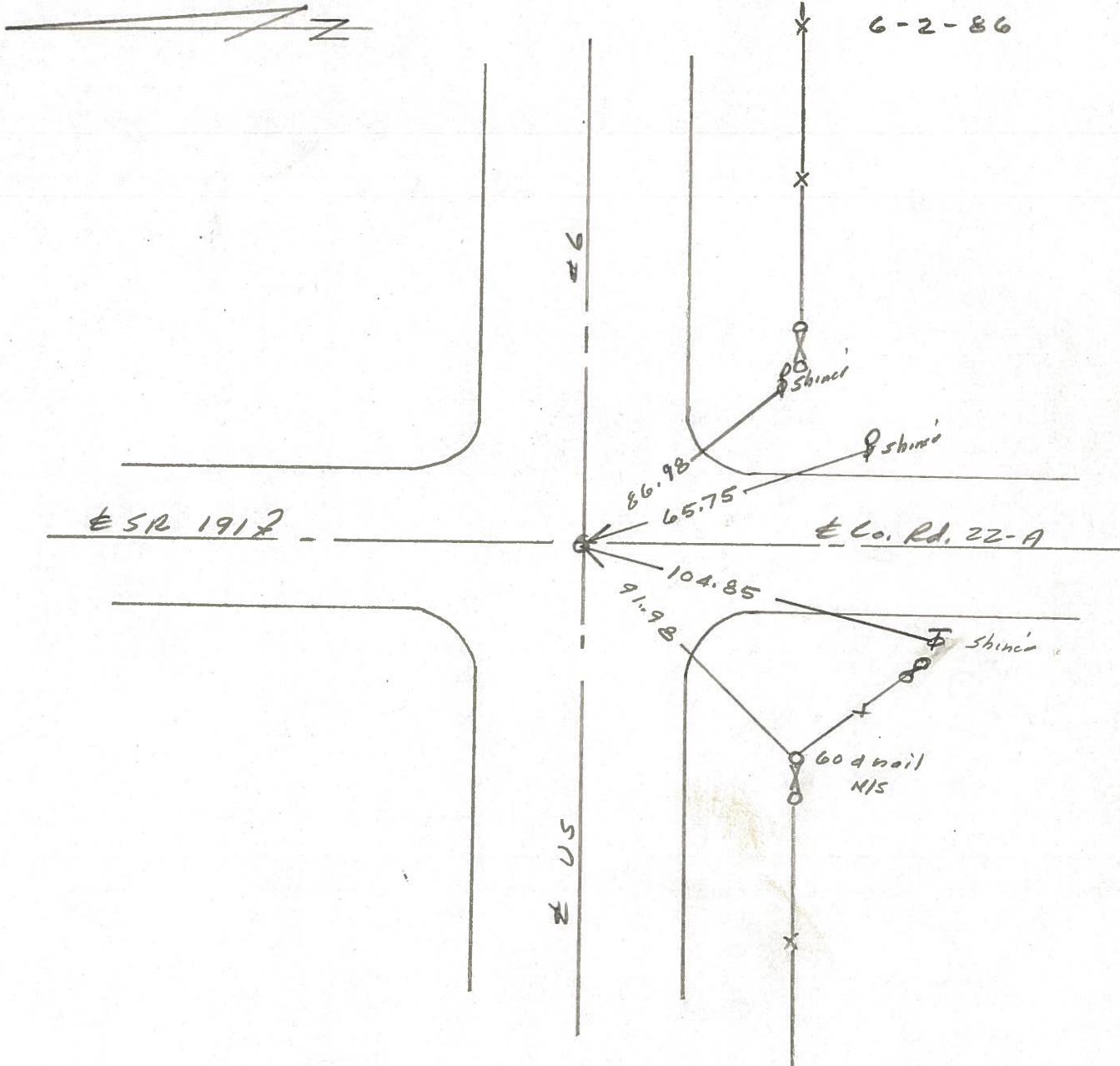
T N, R E

Personnel I. Stone
P. Nusco
R. Michalak
D. Curtis



REF. NO. 22-A

Fd. P.K. Nail To Surface
6-2-86



PERSONNEL TITLE PERSONNEL TITLE

Louys

COUNTY Wi.

DATE 2-28-58

S. R. 6

WEATHER

SEC. Relocation Over Rt. #384

TEMP. 40°

DESCRIPTION Witnesses to Control Points

JOB NO.

LEFT

CENTER LINE

RIGHT

Shiner N.W. Side P.P.

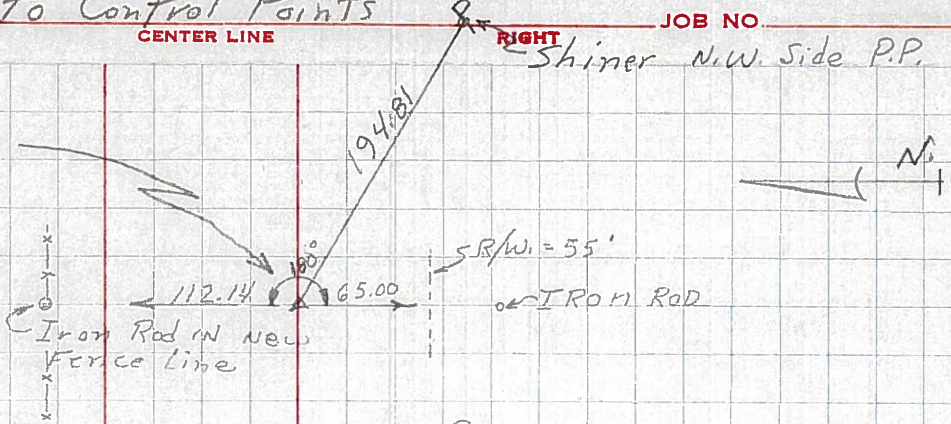
140.

P.I. - Sta. 542 + 30.10

$\Delta = 0^\circ - 03' RT.$

Fd Stone (R.R. SPK.)

23



139

P.O.T. - Sta. 523 + 44 #

Δ Rt. #191

REFER OPPOSITE P₃-138A & 137A

138 - Sta. 504 + 00 P.O.T. (IRON BOLT ON Δ)

137 - Sta. 500 + 00 P.O.T. (TACKED HUB ON Δ)

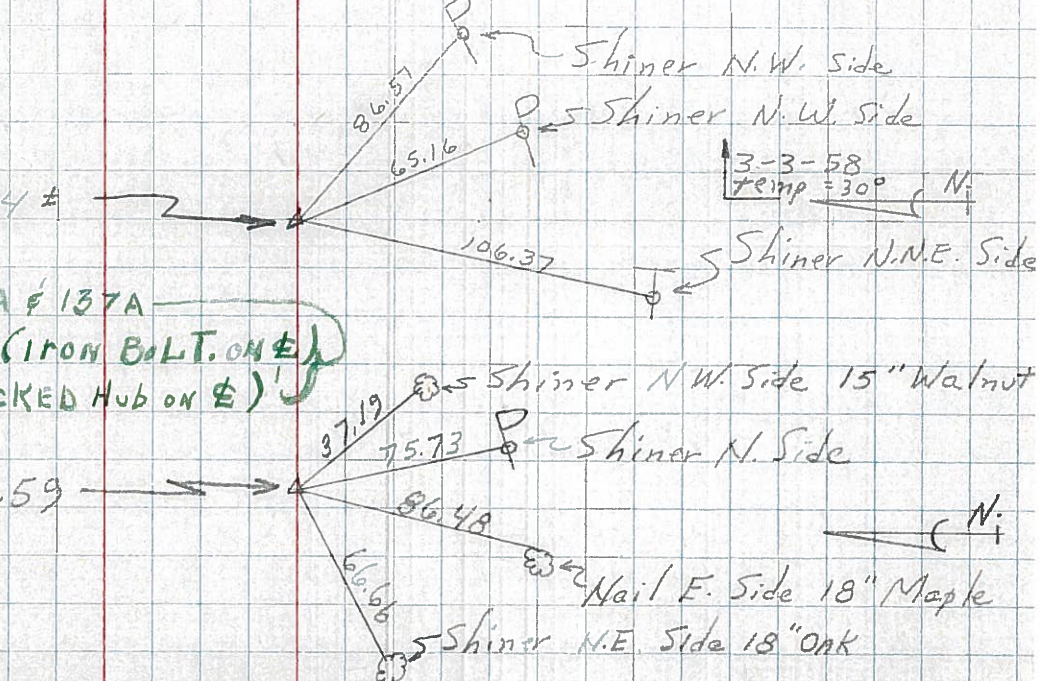
22-A

136

P.I. - Sta. 489 + 93.59

$\Delta = 0^\circ - 01' - 20" LT.$

Fd Stone (R.R. SPK.)



22

135

P.I. - Sta. 463 + 15.15

$\Delta = 0^\circ - 08' LT.$ (Fd IRON PIN)

REFER OPPOSITE P₃-134A & 133A
NOT HERE
STAIN
KLO
BOOK

134 - Sta. 449 + 79.69 - NO ANGLE - (STONE - R.R. SPK.)

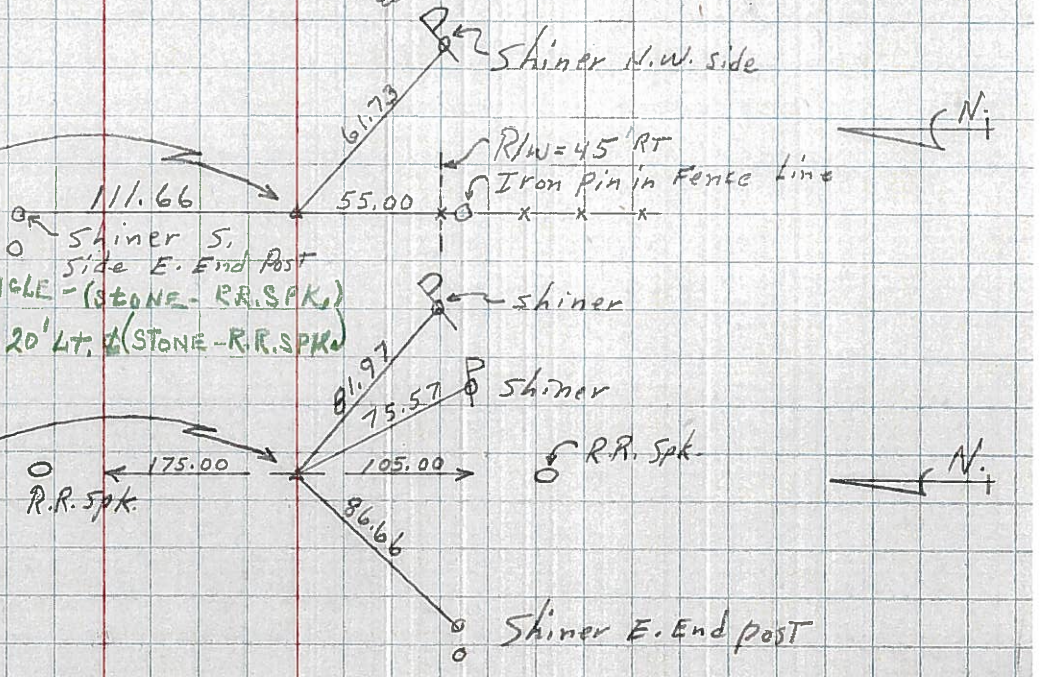
133 - Sta. 444 + 10.83 - 0, 20' LT. (STONE - R.R. SPK.)

132

P.I. - Sta. 436 + 38.87

$\Delta = 0^\circ - 14' - 20" RT$

(EST R.R. SPK.)



21