

O.D.O.T. DISTRICT 2 SURVEY OFFICE (USE ONLY)

PERSONNEL _____

REFERENCE NO. 23

SHEET 3 OF 9

NOTES SEAMAN DATE 2/14/18
 H.C. O'DONNELL WEATHER SUNNY
 R.C. LEU TEMP. 23°

ROUTE US 6
 COUNTY WILLIAMS
 TOWNSHIP SPRINGFIELD
 SECTION 33
 T 6 N R 4 E

DWG BY NIESE PID 95997

TYPE MONUMENT P.K./WASHER

ON SURFACE - ~~BELOW~~ ON

OFFSET 0.2' LT : ~~RT~~

12.0' TO LT EDGE PAVEMENT

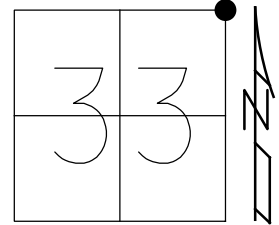
STATION: 1121+84.94

HORZ.DATUM: NAD83 2011

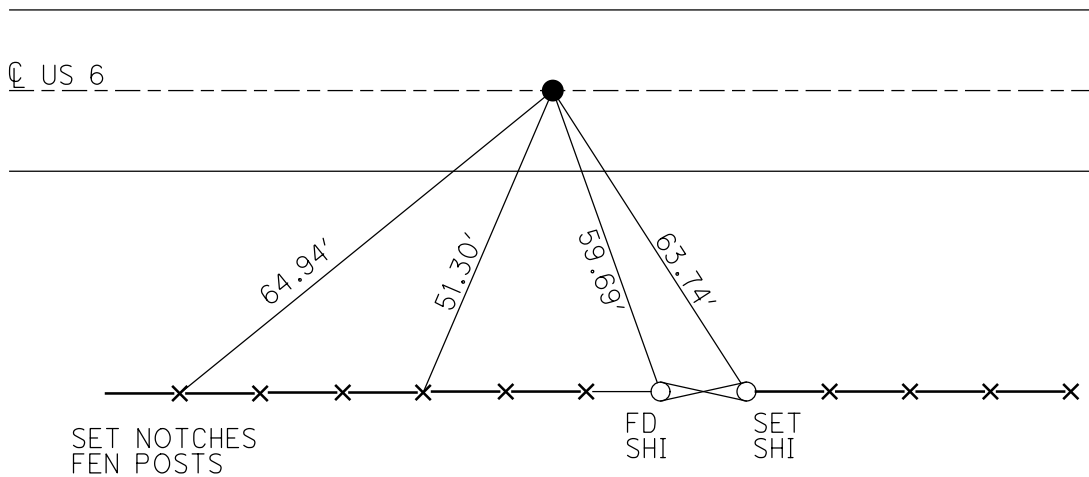
GEOID: NAVD88 2012A

GRID: NORTHING: 652459.474

EASTING: 1447691.093



RECORD:
 SET P.K.NAIL
 9/8/86, IRS
 FD P.K.NAIL
 5/10/99, MDB
 SET P.K./WASHER
 10/21/99, MDB
 FD P.K./WASHER
 REF23
 2/14/18, JFO
 SET MAG/WASHER
 1/14/21, JFO



O.D.O.T. DISTRICT 2 SURVEY OFFICE

PERSONNEL

REFERENCE NO. 23

SHEET 2 OF 7

NOTES CANTERBURY

H.C. Rousos

R.C. BARNHISEL

DATE 5-10-99

WEATHER FAIR

TEMP. +75°

ROUTE US #6

COUNTY Williams

TOWNSHIP Springfield

SECTION 27, 28, 33, 34

T6 N R 4 E

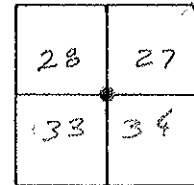
TYPE MONUMENT PK Nail

ON SURFACE - BELOW SURFACE

LEFT - PAV'T. - RIGHT 0.2' LT

12.0' TO LT EDGE PAVEMENT

S.L.M. 1121785 sta 34+193.874 SLK

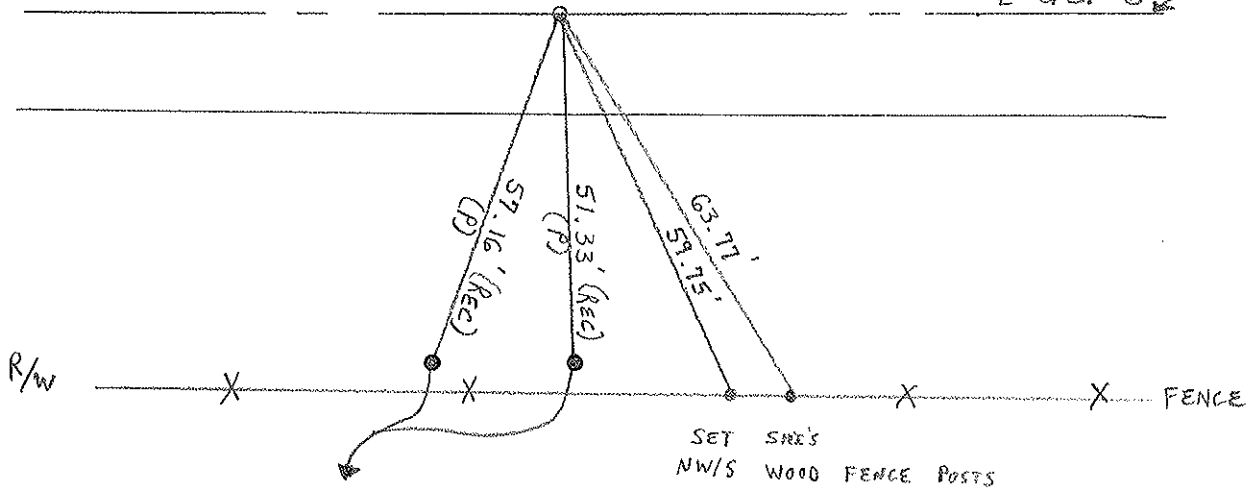


Set PK Nail
9-8-86
IRS

RESET P.K. + WASHER
10-21-99 M.D.B.

944.92' WEST TO
Int. Co. Rd. # 22 (Rec)

US #6



NOTE: 5/8" REEROD, COULD NOT LOCATE DUE TO FENCE

O.D.O.T. DISTRICT 2 SURVEY OFFICE

PERSONNEL _____

REFERENCE NO. 23

SHEET 1 OF _____

NOTES 1. Stone

H.C. D. Curtis

DATE 5 Aug. 86

ROUTE US #6

R.C. R. Michalski

WEATHER Fair

COUNTY Williams

J. Householder

TEMP. 80°

TOWNSHIP Springfield

SECTION 27-28-33-34

T _____ R _____

TYPE MONUMENT PK Nail

ON SURFACE - BELOW Surface

LEFT - < PAV'T. - RIGHT < put

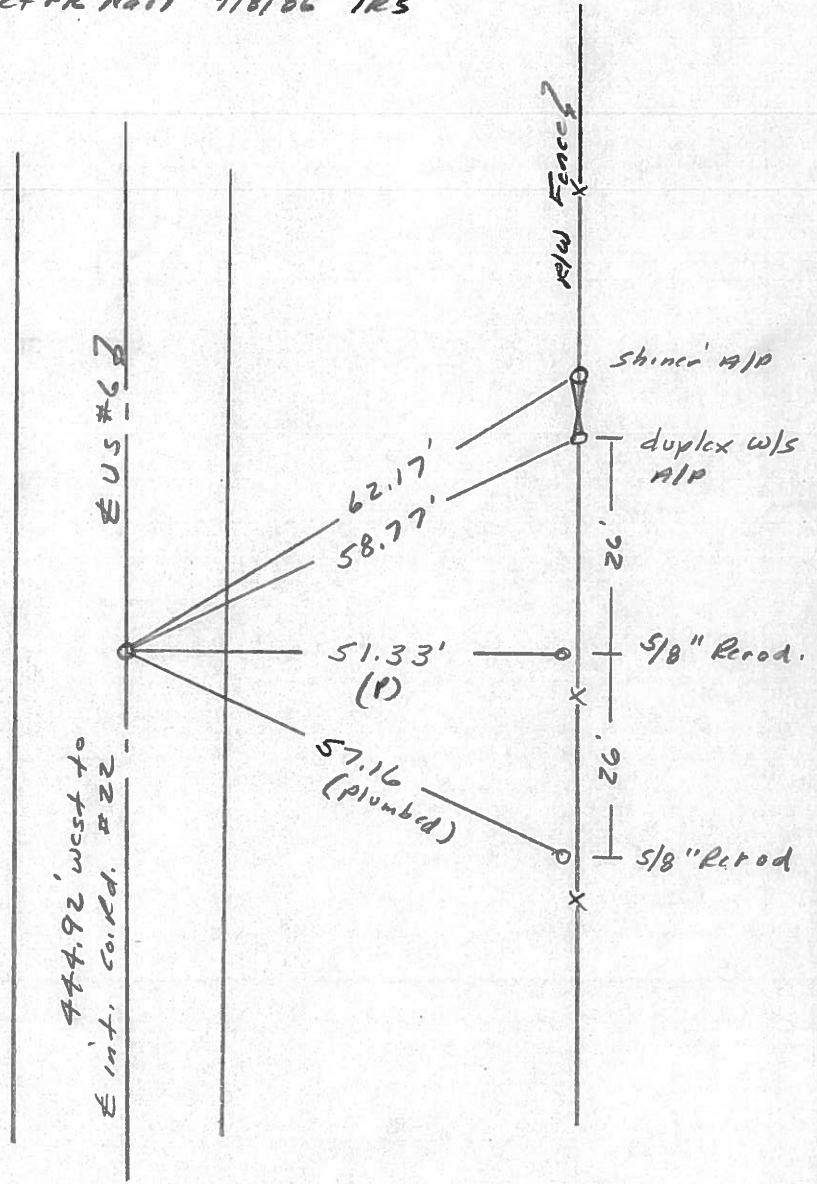
_____ TO _____ EDGE PAVEMENT

S.L.M. 1121 + 85

28	27
33	34

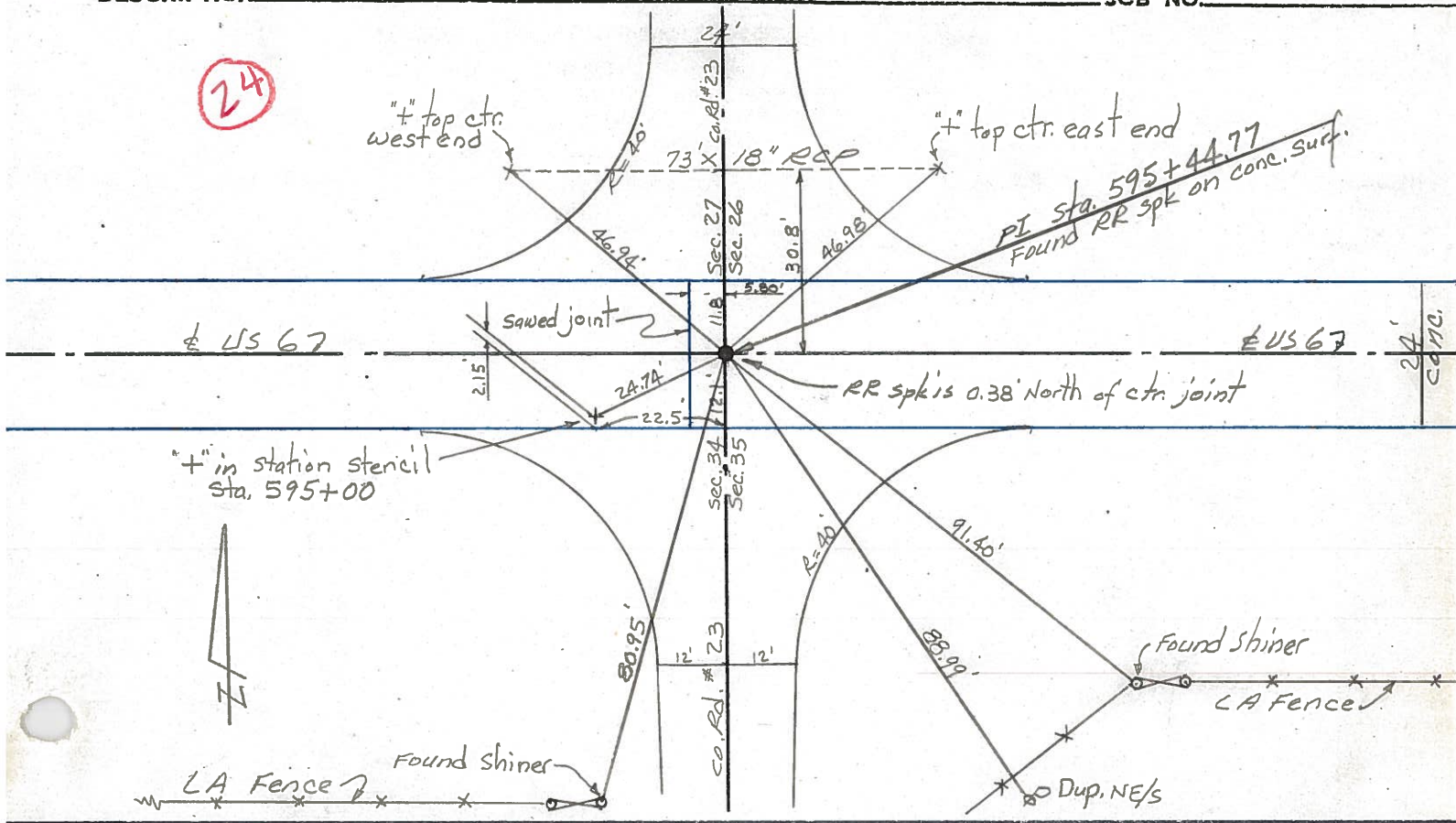


set PK Nail 9/8/86 IRS

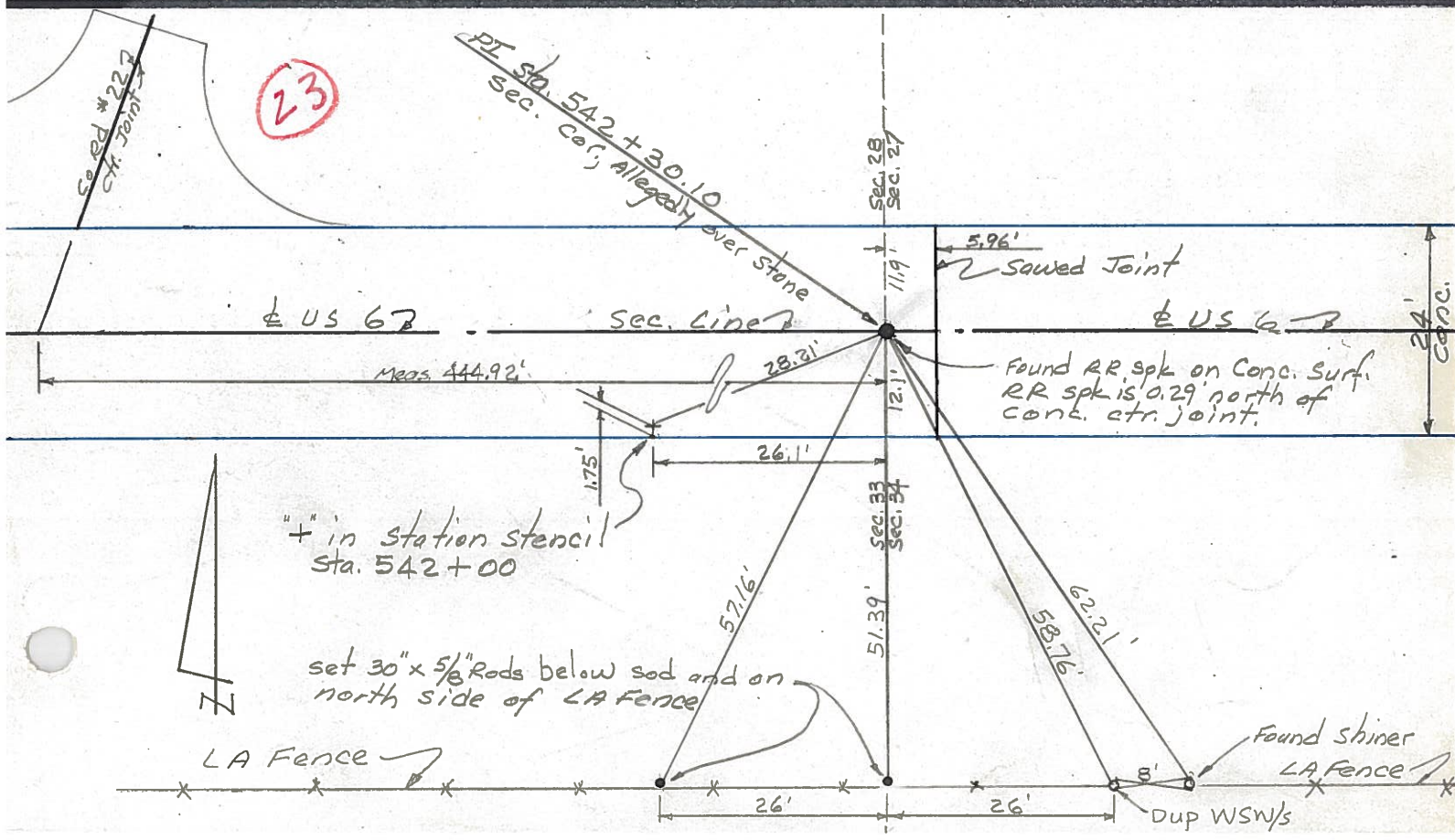


PERSONNEL	TITLE	PERSONNEL	TITLE	COUNTY	DATE	WEATHER
Red Beach				Williams	NOV. '75	
W. Krape				US 6		
				Springfield Twp.		
DESCRIPTION CONTROL POINTS				JOB NO.		

24



23

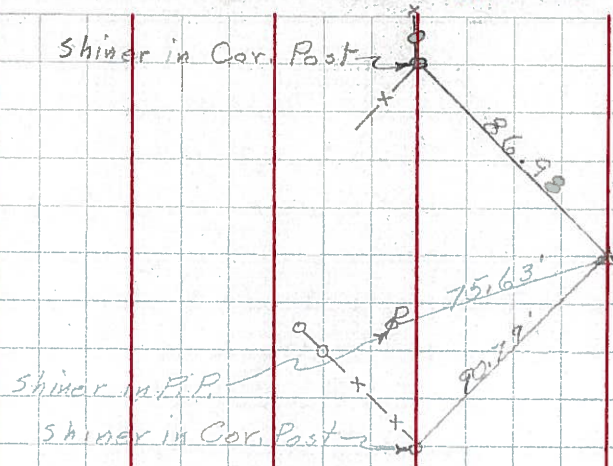


PERSONNEL	TITLE	PERSONNEL	TITLE
Hoover		Young	
Ruffer		Mahler	
Hoff			
Delventhal			

COUNTY Williams DATE 12-8-60
 S. R. 6 WEATHER Partly Cloudy
 SEC. _____ TEMP. 30°

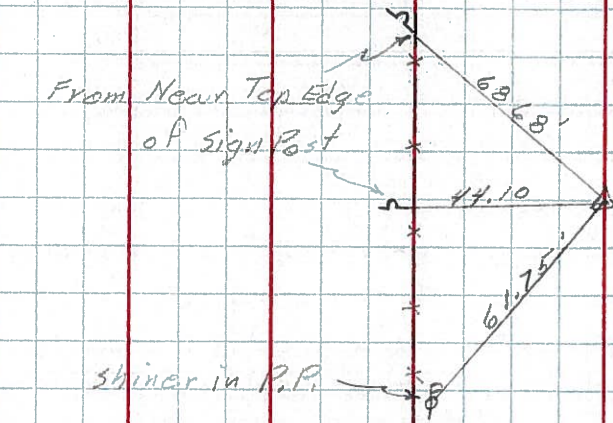
DESCRIPTION _____ LEFT _____ CENTER LINE _____ RIGHT _____ JOB NO. _____

132.
 (21)



Sta. 436+38.87
 Found R.R. Spk.
 Int. Co. Rd. 20

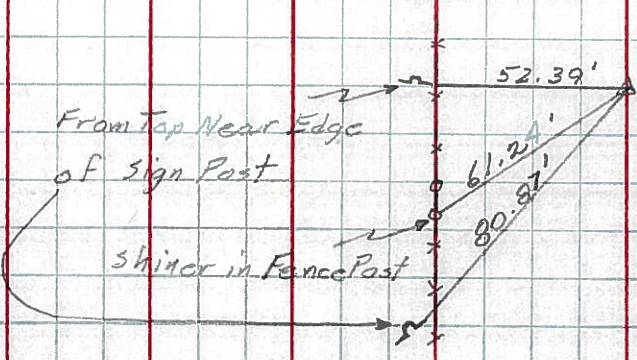
135.
 (21-A)



Sta. 463+15.15
 Found R.R. Spk.



140.
 (23)



Sta. 592+30.10
 Found R.R. Spk.

PERSONNEL

TITLE

PERSONNEL

TITLE

Louys

COUNTY Wi.

DATE 2-28-58

S. R. 6

WEATHER

SEC. Relocation Over Rt. #384 TEMP. 40°

DESCRIPTION Witnesses to Control Points

JOB NO.

LEFT

CENTER LINE

RIGHT

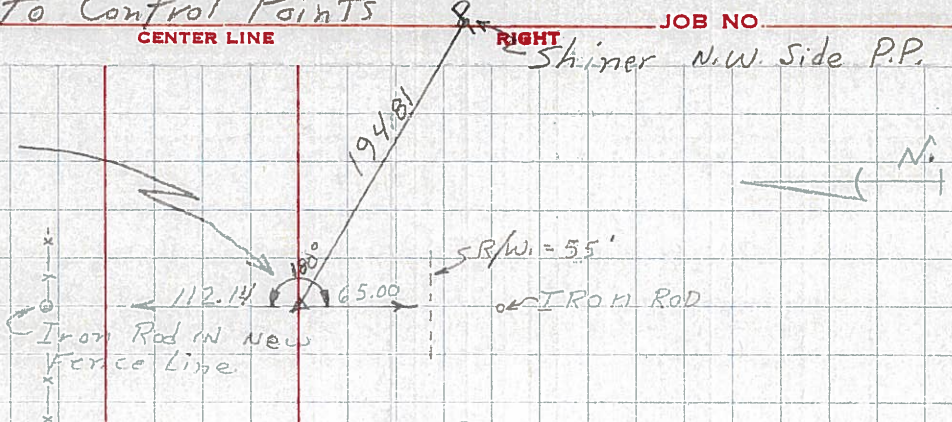
Shiner N.W. Side P.P.

140

P.I. - Sta. 542 + 30.10

$\Delta = 0^\circ - 03' RT$

Fd Stone (R.R. SPK)



23

139

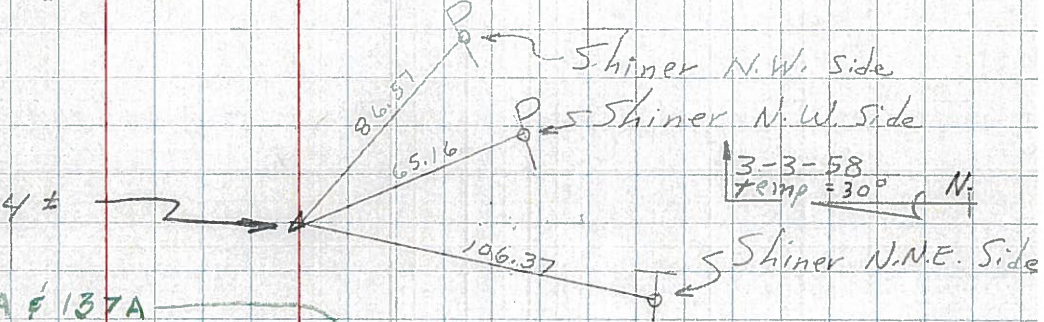
P.O.T. - Sta. 523 + 44 ±

RT. #191

REFER - OPPOSITE P₃ - 138A & 137A

138 - Sta. 504 + 00 P.O.T. (IRON BOLT ON Φ)

137 - Sta. 500 + 00 P.O.T. (TACKED HUB ON Φ)



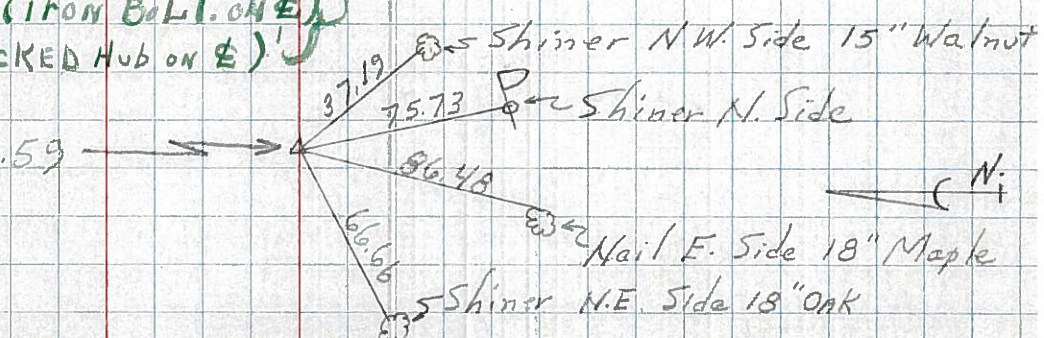
22-A

136

P.I. - Sta. 489 + 93.59

$\Delta = 0^\circ - 01' - 20" LT$

Fd Stone (R.R. SPK)



22

135

P.I. - Sta. 463 + 15.15

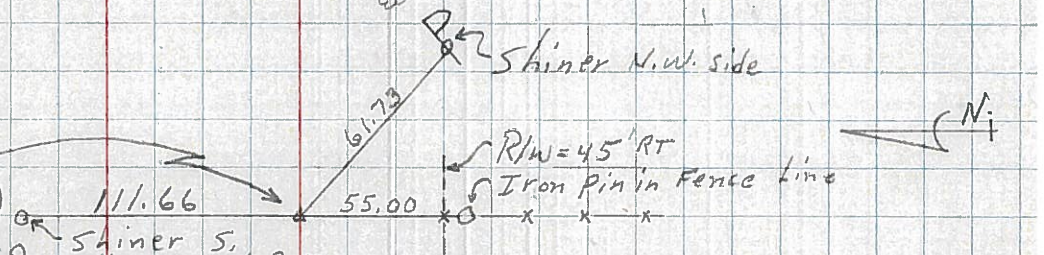
$\Delta = 0^\circ - 08' LT$ (Fd IRON PIN)

REFER OPPOSITE P₃ 134A & 133A

NOT RECORDED IN FIELD BOOK

134 - Sta. 449 + 79.69 - NO ANGLE - (STONE - RR. SPK.)

133 - Sta. 444 + 10.83 - 0, 20' LT. (STONE - RR. SPK.)

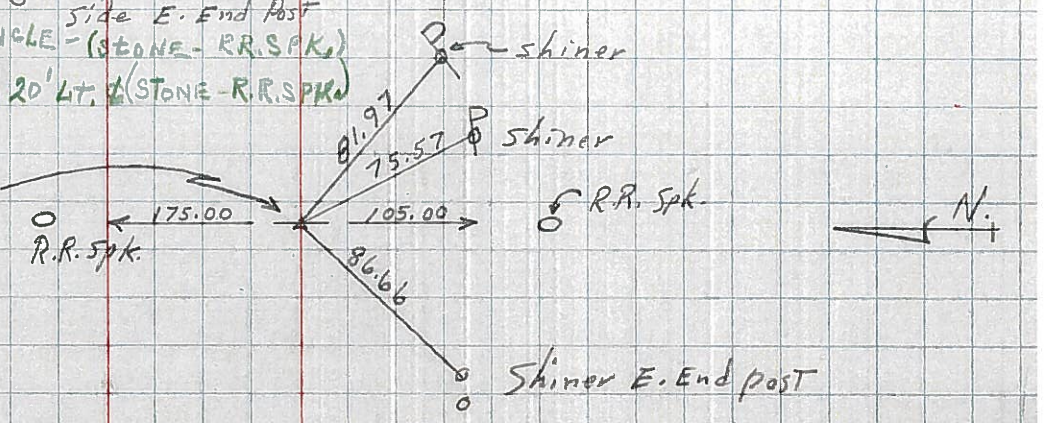


132

P.I. - Sta. 436 + 38.87

$\Delta = 0^\circ - 14' - 20" RT$

(EST R.R. SPK.)



21