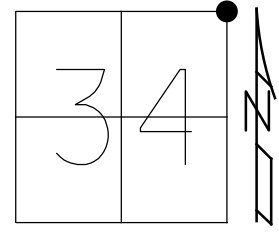


O.D.O.T. DISTRICT 2 SURVEY OFFICE (USE ONLY)

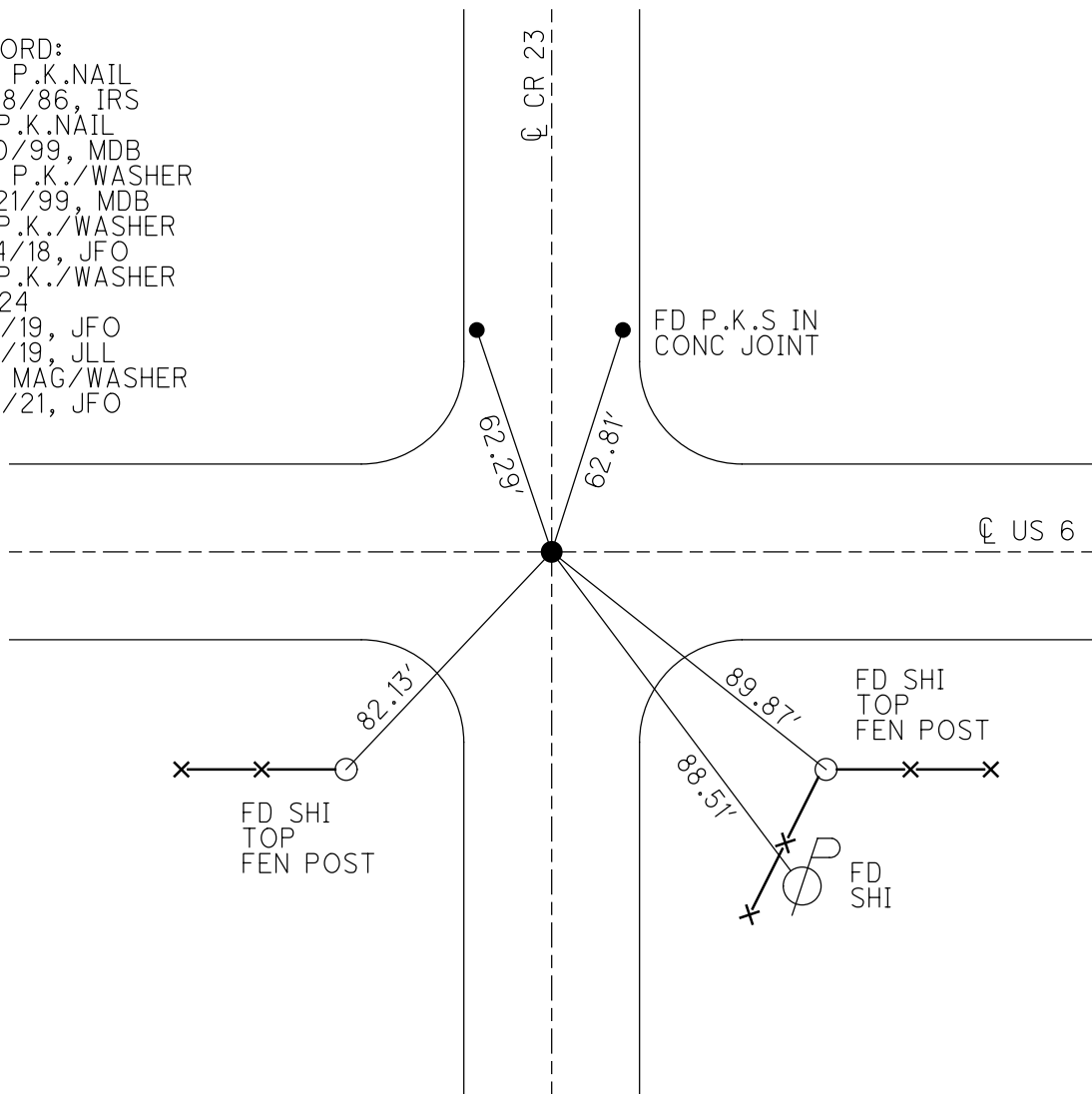
PERSONNEL _____ REFERENCE NO. 24 SHEET 4 OF 9
 NOTES AUBLE DATE 9/4/19 ROUTE US 6
 H.C. LEU WEATHER SUNNY COUNTY WILLIAMS
 R.C. NASON TEMP. 71° TOWNSHIP SPRINGFIELD
 NIESE SECTION 34
 DWG BY NIESE PID 95997 T 6 N R 4 E

TYPE MONUMENT P.K./WASHER
 ON SURFACE - ~~BELOW~~ ON
 OFFSET ☉ PAVEMENT ON LT : RT
- TO - EDGE PAVEMENT
 STATION: 1174+97.38



HORZ.DATUM: NAD83 2011 GEOID: NAVD88 2012A
 GRID: NORTHING: 652370.071 EASTING: 1453002.777

RECORD:
 SET P.K.NAIL
 9/08/86, IRS
 FD P.K.NAIL
 5/10/99, MDB
 SET P.K./WASHER
 10/21/99, MDB
 FD P.K./WASHER
 2/14/18, JFO
 FD P.K./WASHER
 REF24
 3/4/19, JFO
 9/4/19, JLL
 SET MAG/WASHER
 1/14/21, JFO



O.D.O.T. DISTRICT 2 SURVEY OFFICE

PERSONNEL

REFERENCE NO. 29

SHEET 3 OF 7

NOTES CANTERBURY

H.C. ROUSOS

R.C. BARNISEL

DATE 5-10-99

WEATHER FAIR

TEMP. +75°

ROUTE US #6

COUNTY Williams

TOWNSHIP Springfield

SECTION 26, 27, 34, 35

T. 6 N. R. 4 E

TYPE MONUMENT P.K. NAIL

ON SURFACE - BELOW SURFACE

LEFT-~~C~~ PAV'T. - RIGHT 0.2' LT & PAVE. ON & C.R. #23

TO EDGE PAVEMENT

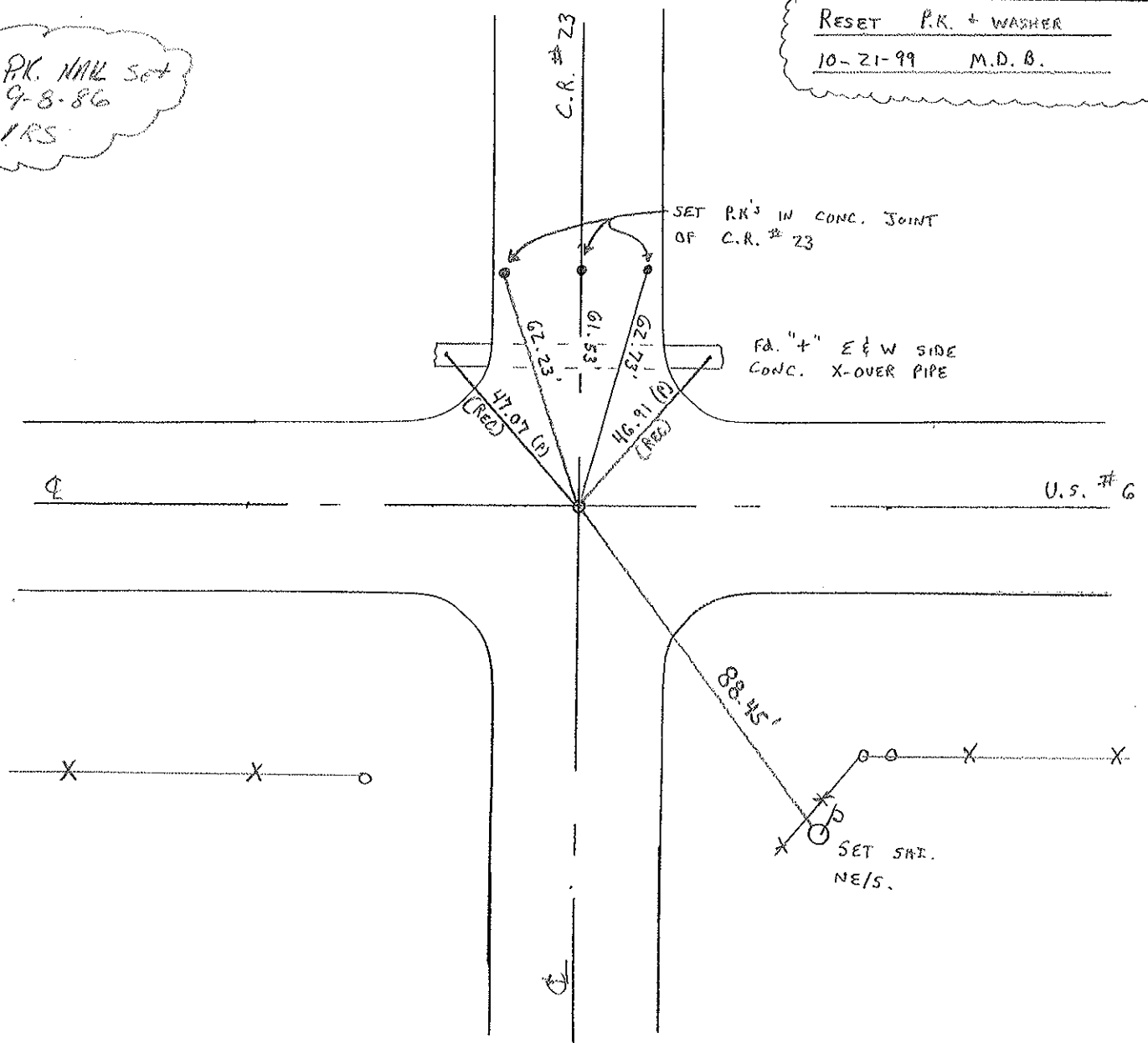
S.L.M. 35 + 817.617 SLK

27	26
34	35



P.K. NAIL set
 9-8-86
 IRS

RESET P.K. + WASHER
 10-21-99 M.D.B.



O.D.O.T. DISTRICT 2 SURVEY OFFICE

PERSONNEL

REFERENCE NO. 24

SHEET 2 OF

NOTES 1. Stone

H.C. D. Curtis

DATE 5 Aug. 86

ROUTE US #6

R.C. R. Michalski

WEATHER Fair

COUNTY Williams

J. Householder

TEMP. 80°

TOWNSHIP Springfield

SECTION 26-27-34-35

T R

TYPE MONUMENT PK Nail

ON SURFACE - BELOW Surface

LEFT - & PAV'T. - RIGHT & put.

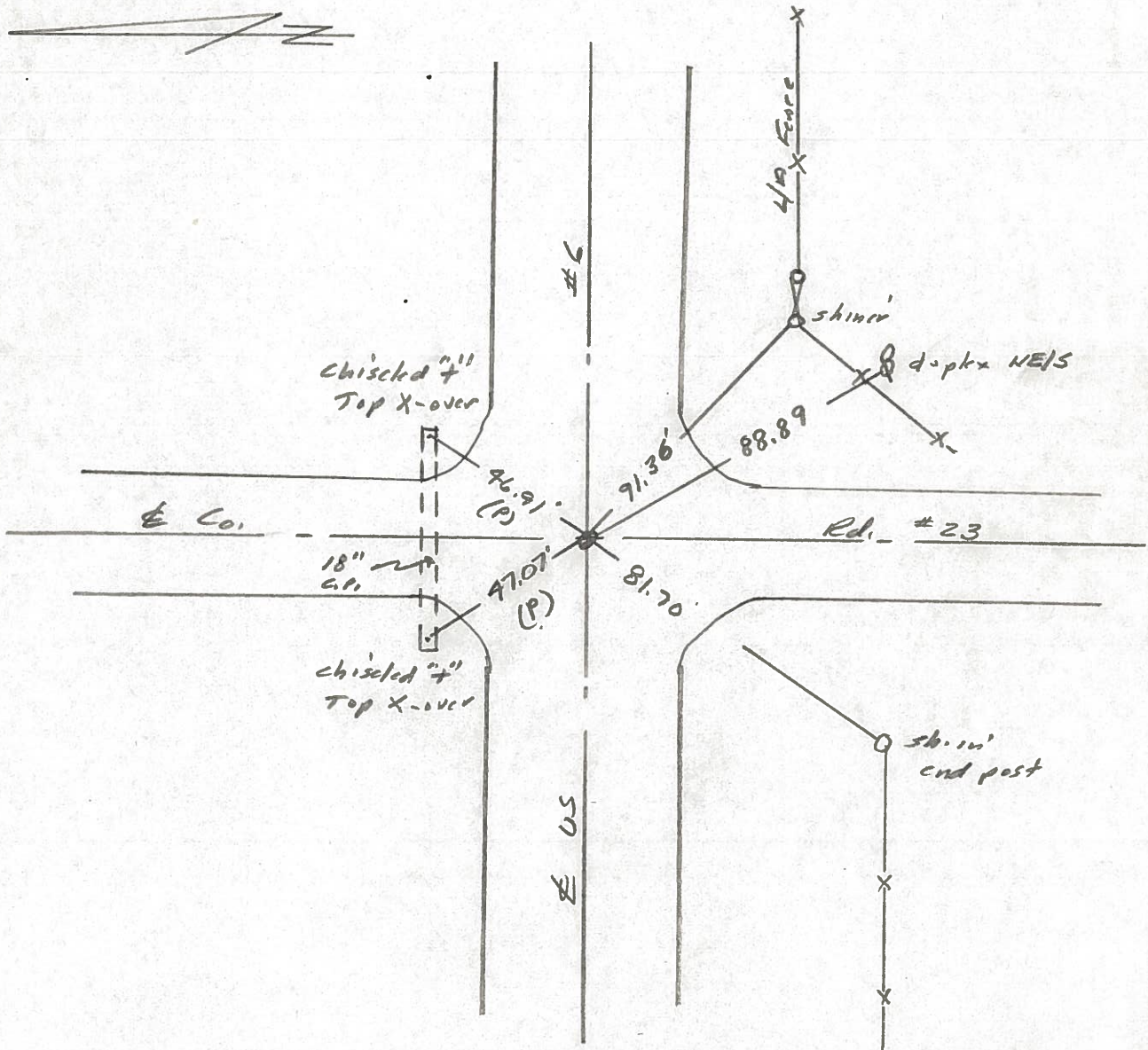
TO EDGE PAVEMENT

S.L.M.

27	26
34	35



Set PK Nail 9/8/86 IRS



PERSONNEL TITLE PERSONNEL TITLE

Red Beach

W. Krape

COUNTY Williams

DATE Nov. '75

S. R. US 6

WEATHER

SEC. Springfield Twp. TEMP

DESCRIPTION CONTROL POINTS

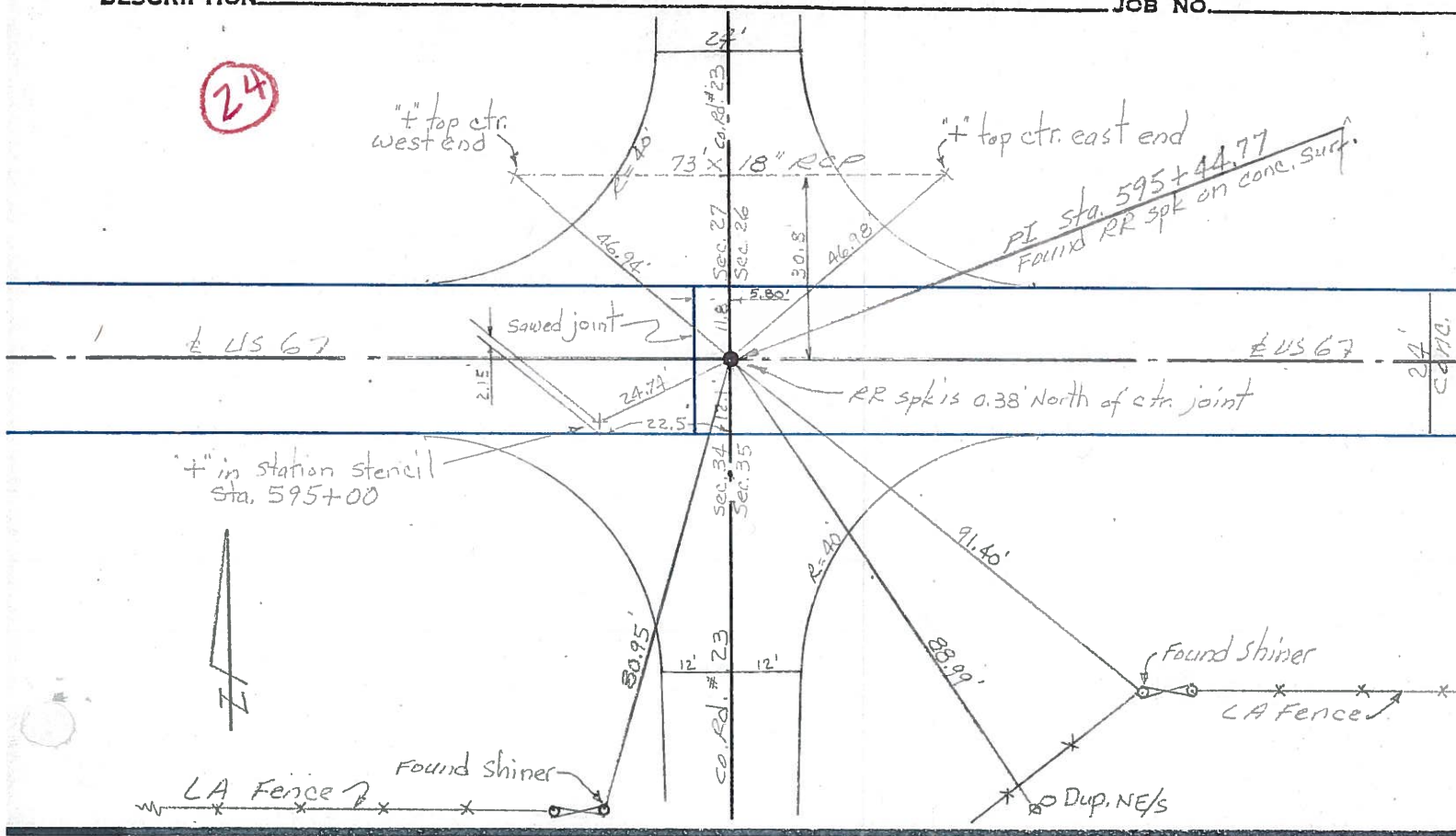
JOB NO.

24

" top ctr. west end

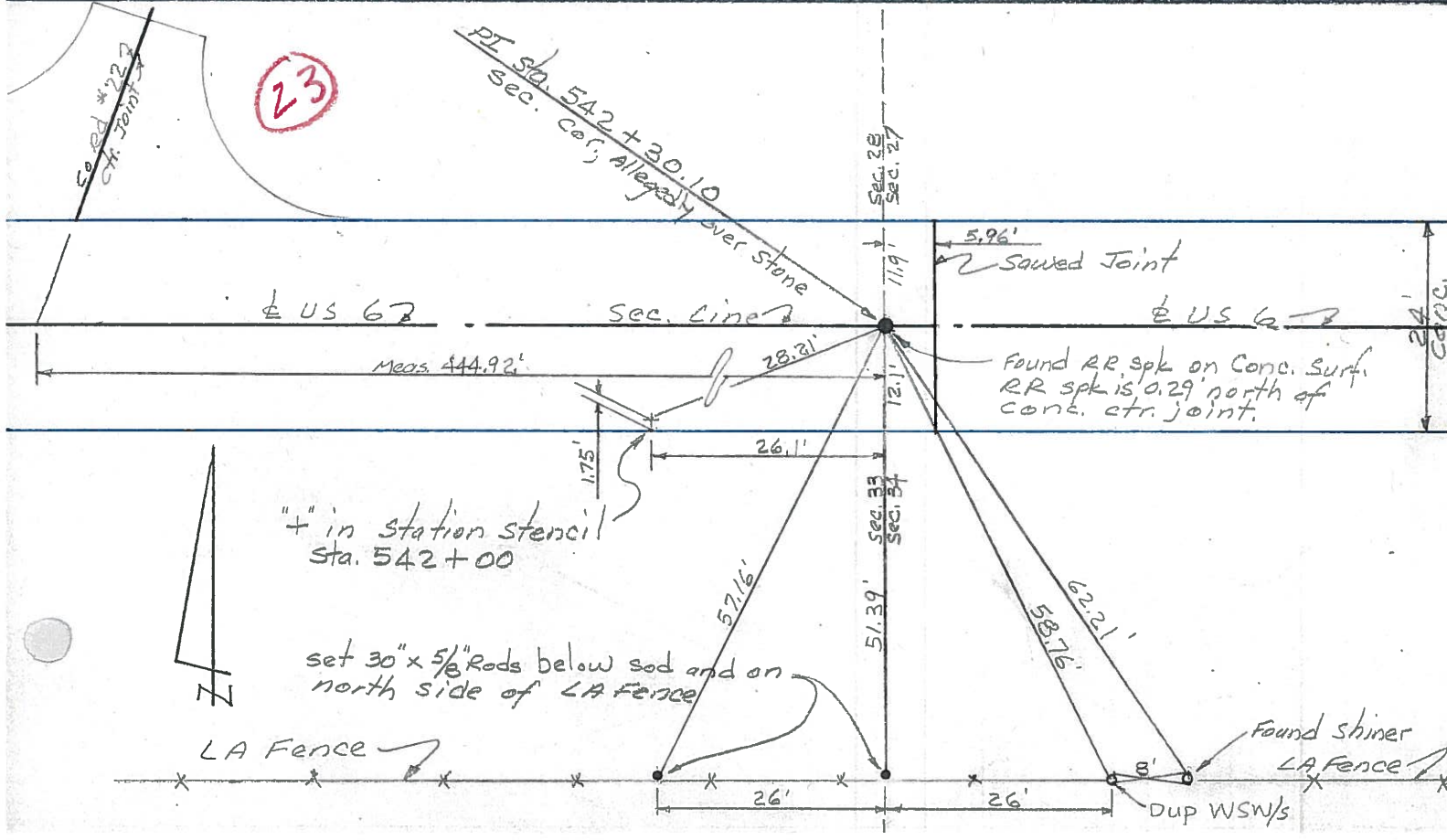
" top ctr. east end

PI Sta. 595+44.77
FOUND RR spk on conc. surf.



23

PI Sta. 542+30.10
Sec. Co. Rd. Allegedly over Stone



PERSONNEL TITLE PERSONNEL TITLE

COUNTY Williams DATE 12-13-60

Hoover

S. R. 6 WEATHER Fair

Ruffer

Delventhal

SEC. _____ TEMP. 15°

Young

Mohler

DESCRIPTION _____ JOB NO. _____

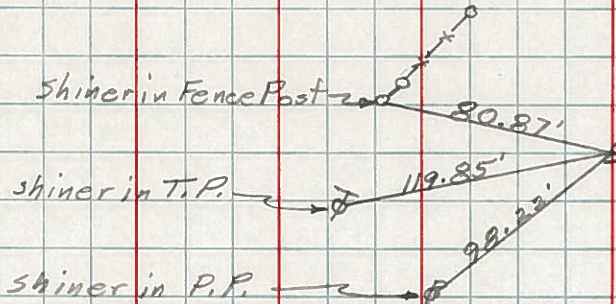
LEFT

CENTER LINE

RIGHT

141.

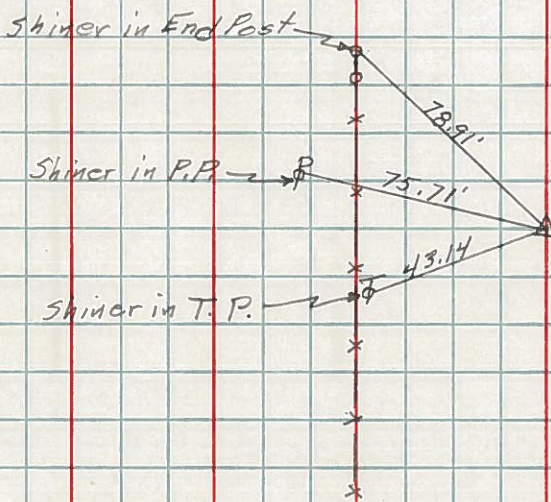
(24)



Sta. 595+44.77
Found R.R. Spk.

142.

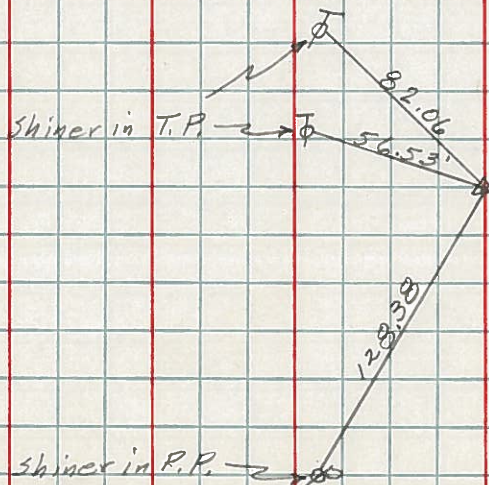
(24-A)



Sta. 621+88.45
Found R.R. Spk.

143.

(25)



Sta. 648+35.70
Found R.R. Spk.
Int. Co. Rd. 24

PERSONNEL	TITLE	PERSONNEL	TITLE	COUNTY	DATE	WEATHER
Louys				Wi.	3-3-58	
				S. R. 6		
				SEC. Relocation Over Rt. #384		30°
DESCRIPTION	Witnesses to Control Points			JOB NO.		
	LEFT	CENTER LINE	RIGHT			

