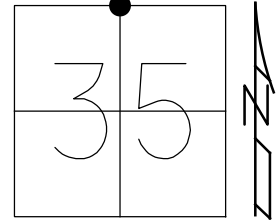


O.D.O.T. DISTRICT 2 SURVEY OFFICE (USE ONLY)

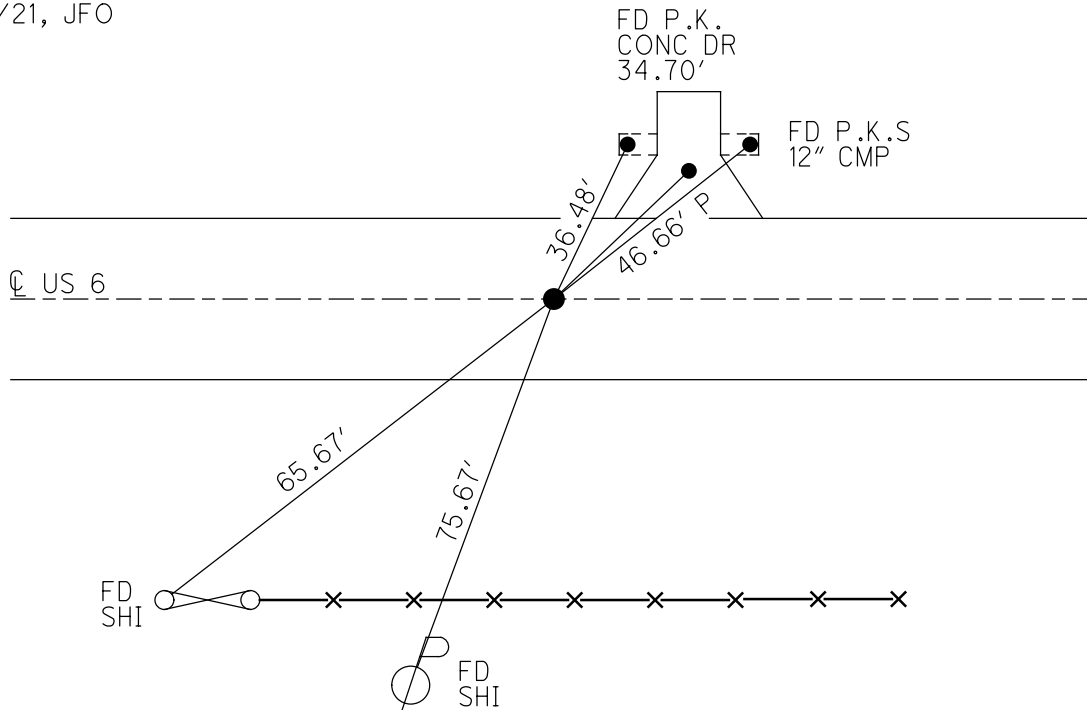
PERSONNEL	REFERENCE NO. <u>24 A</u>	SHEET <u>5</u> OF <u>9</u>
NOTES <u>AUBLE</u>	DATE <u>9/4/19</u>	ROUTE <u>US 6</u>
H.C. <u>LEU</u>	WEATHER <u>SUNNY</u>	COUNTY <u>WILLIAMS</u>
R.C. <u>NASON</u>	TEMP. <u>71°</u>	TOWNSHIP <u>SPRINGFIELD</u>
<u>NIESE</u>		SECTION <u>35</u>
DWG BY <u>NIESE</u>	PID <u>95997</u>	T <u>6</u> N R <u>4</u> E

TYPE MONUMENT P.K./WASHER  
 ON SURFACE - ~~BELOW~~ ON  
 OFFSET Q PAVEMENT ON LT : RT  
11.8' TO LT EDGE PAVEMENT  
 STATION: 1201+39.63



HORZ.DATUM: NAD83 2011 GEOID: NAVD88 2012A  
 GRID: NORTHING: 652325.484 EASTING: 1455644.646

RECORD:  
 FD P.K.NAIL  
 5/10/99, MDB  
 SET P.K./WASHER  
 10/21/99, MDB  
 FD P.K./WASHER  
 REFA24  
 2/14/18, JFO  
 9/4/19, JLL  
 SET MAG/WASHER  
 1/14/21, JFO



# O.D.O.T. DISTRICT 2 SURVEY OFFICE

PERSONNEL

REFERENCE NO. 24-A

SHEET 4 OF 7

NOTES CANTERBURY

H.C. Rousos

R.C. BARNHISEL

DATE 5-10-99

WEATHER FAIR

TEMP. +75°

ROUTE LIS 6

COUNTY Williams

TOWNSHIP Springfield

SECTION 26

T. 6 N. R. 4 E

TYPE MONUMENT PK NAIL

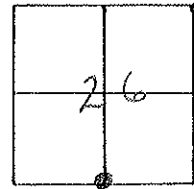
ON SURFACE - BELOW SURFACE

LEFT - CL PAV'T. - RIGHT CL Rmt.

11.6' TO LT EDGE PAVEMENT

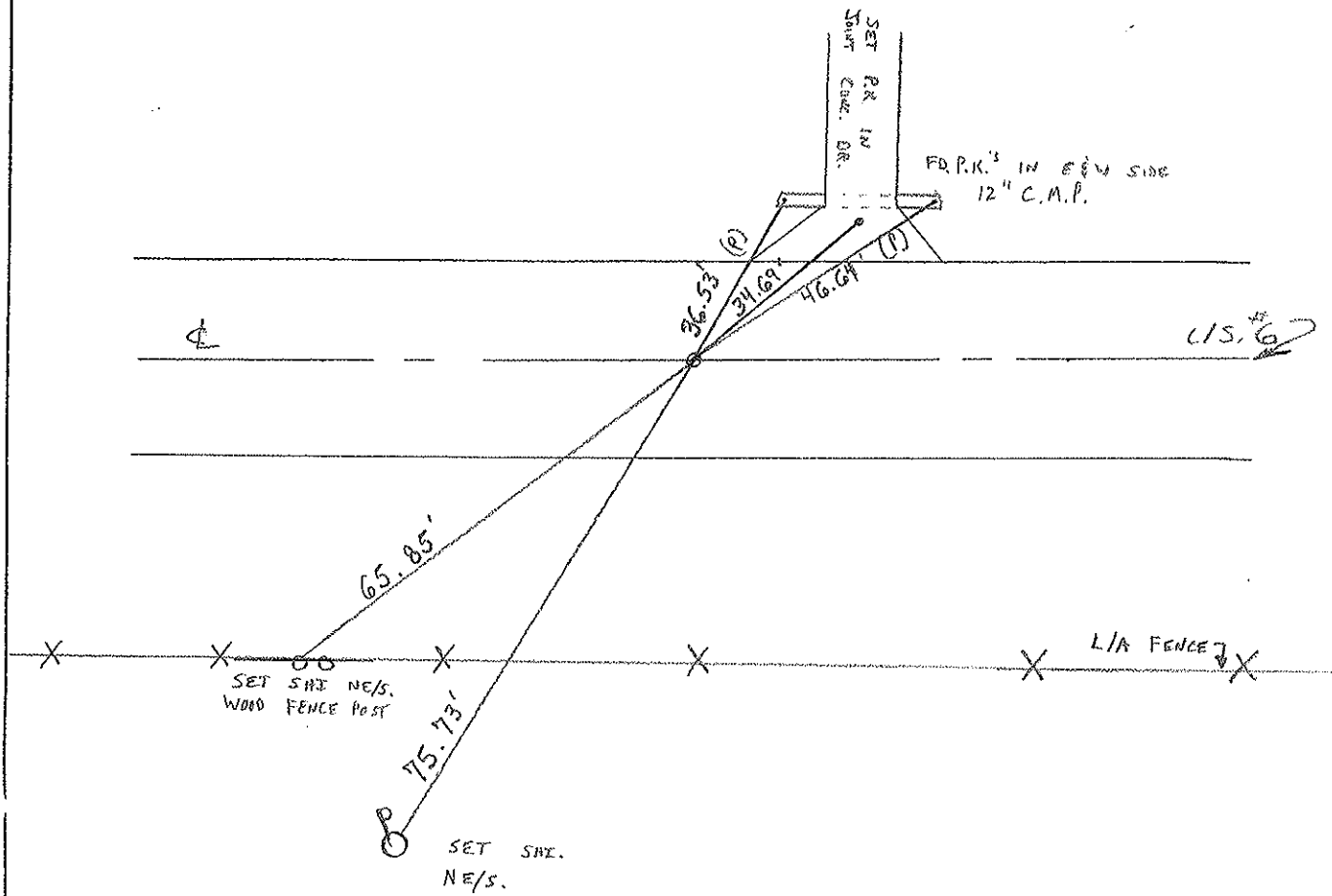
S.L.M. 1201 + 41

36 + 623.226 SLK



RESET P.K. + WASHER

10-21-99 M.D.B.



# O.D.O.T. DISTRICT 2 SURVEY OFFICE

PERSONNEL

REFERENCE NO. 24-14

SHEET 3 OF     

NOTES 1. Stone

H.C. D. Curtis

R.C. R. Michelak

J. Hoosholder

DATE 5 Aug. 86

WEATHER Fair

TEMP. 80°

ROUTE US 46

COUNTY Williams

TOWNSHIP Springfield

SECTION 26

T      R     

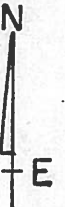
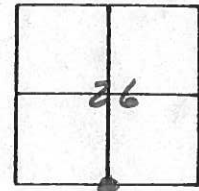
TYPE MONUMENT PK Nail

ON SURFACE - BELOW Surface

LEFT -  $\ominus$  PAV'T. - RIGHT  $\oplus$  put

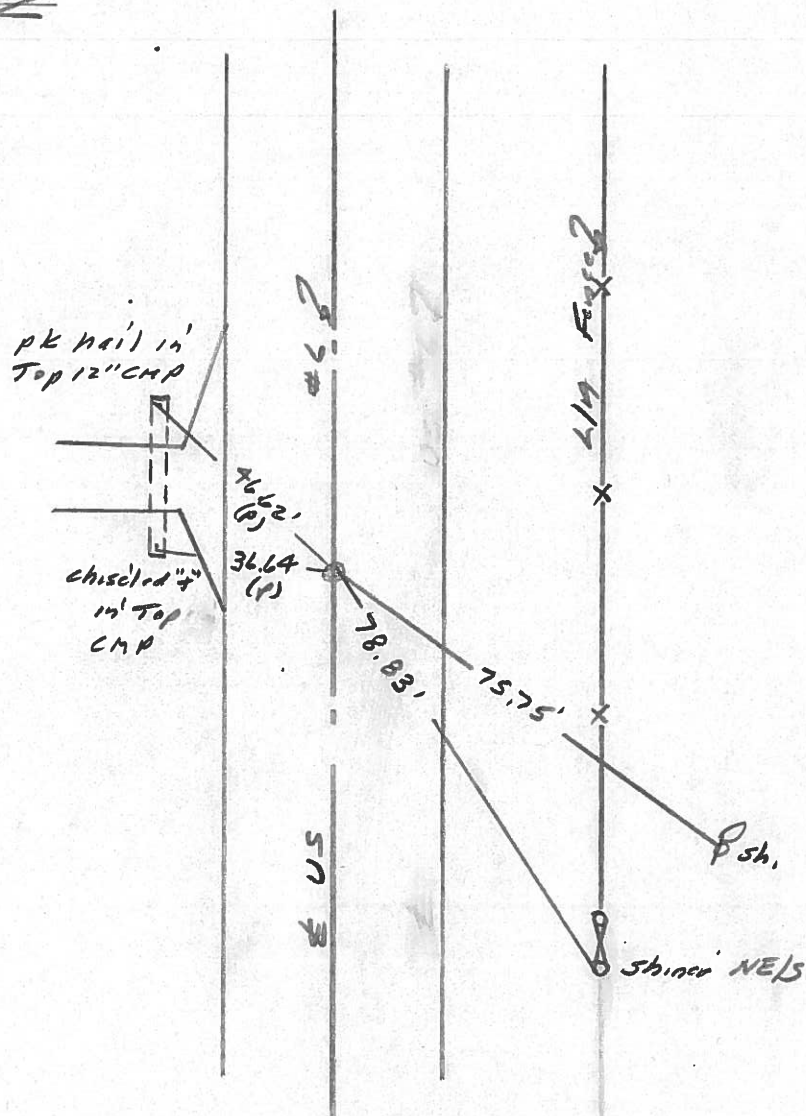
TO      EDGE PAVEMENT

S.L.M. 1201 + 71

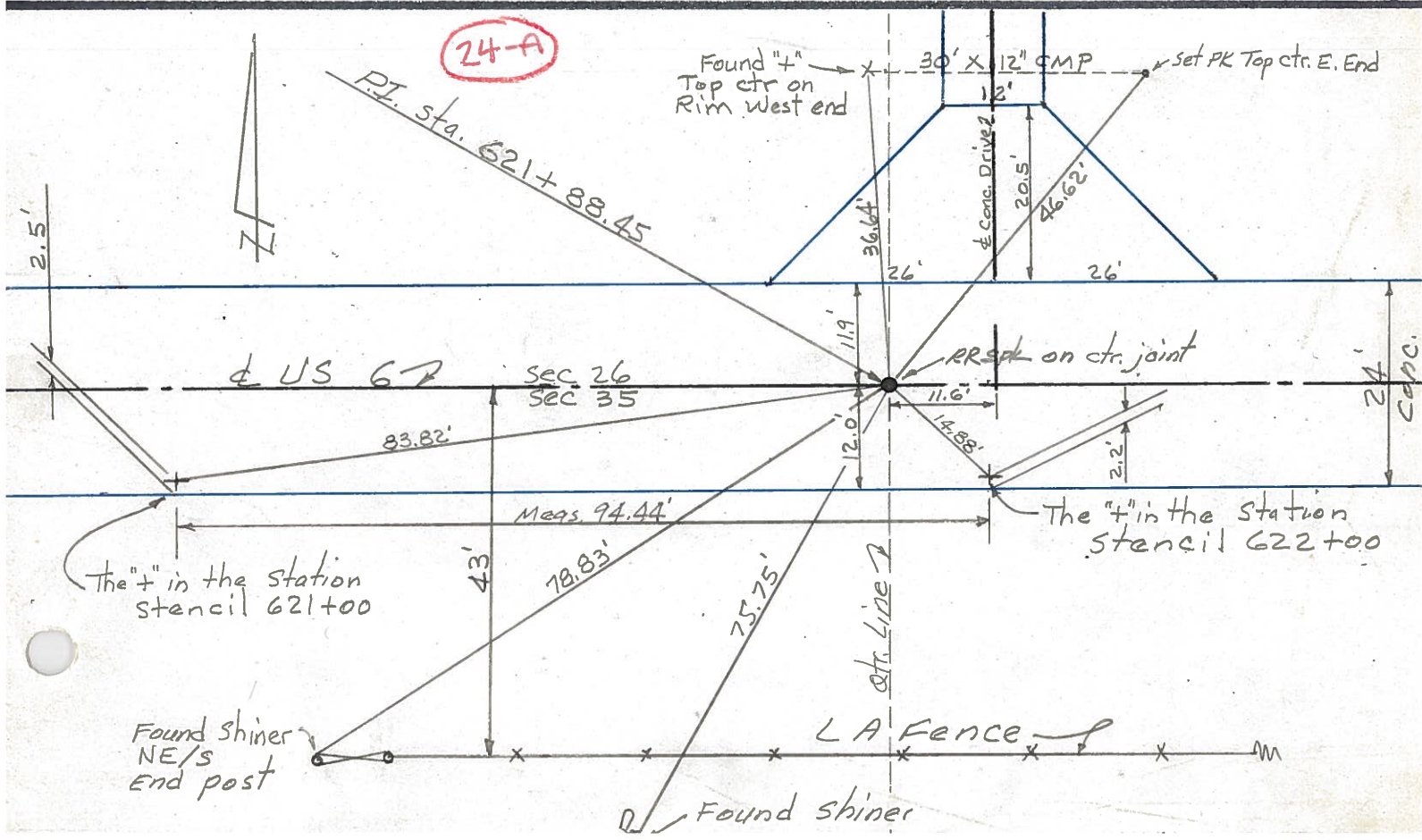
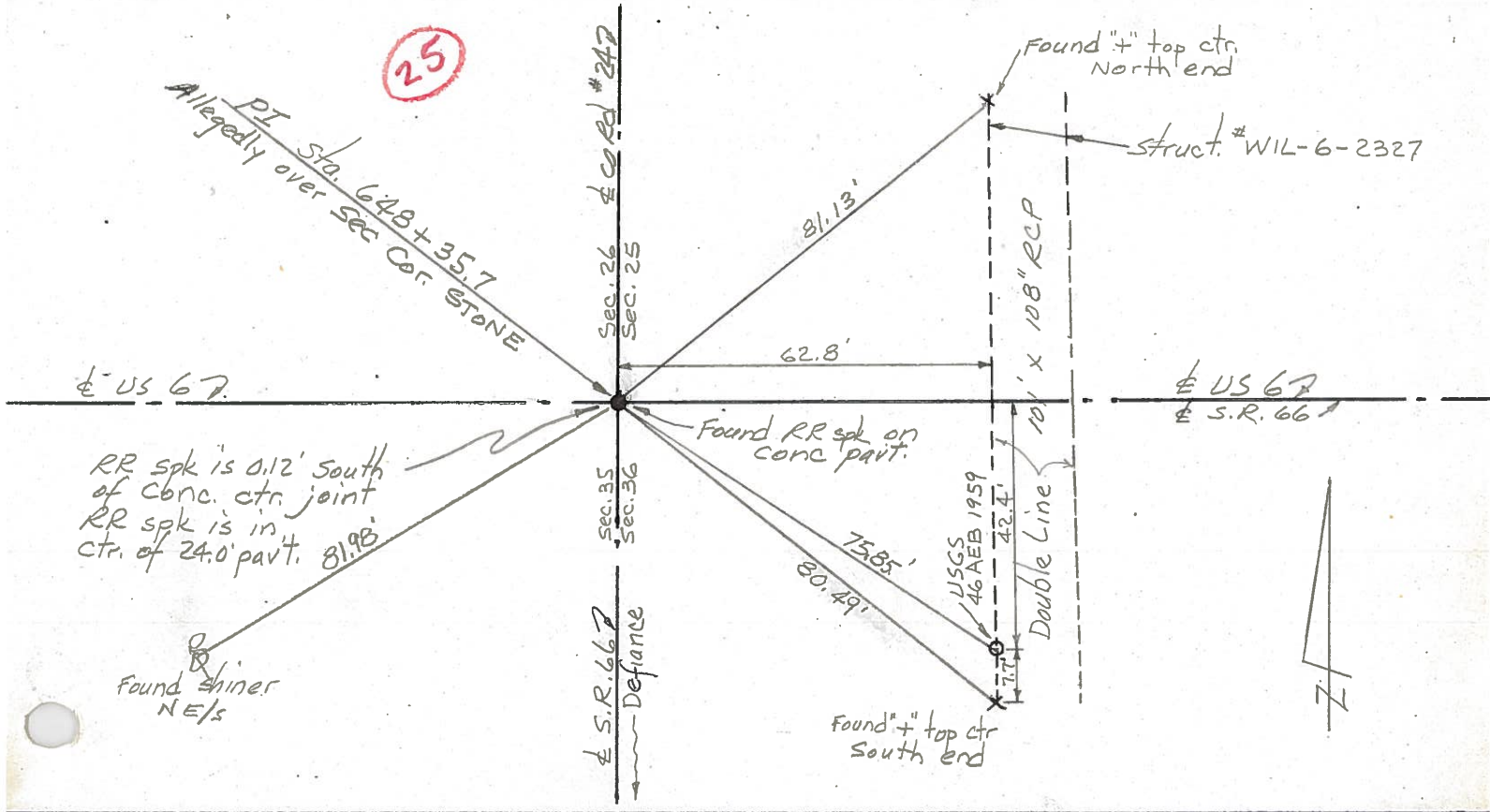


Set PK Nail 9/8/86 1RS

~~2~~



PERSONNEL	TITLE	PERSONNEL	TITLE	COUNTY	DATE	WEATHER	TEMP	JOB NO.
Red Beach				Williams	Nov 75			
W. Knape				US 6				
				Springfield Twp				
DESCRIPTION CONTROL POINTS								



PERSONNEL TITLE PERSONNEL TITLE

COUNTY Williams DATE 12-13-60

Hoover

S. R. 6 WEATHER Fair

Ruffer

Delventhal

SEC. TEMP. 15°

Young

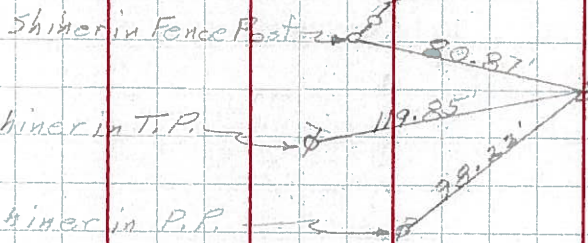
Mohler

JOB NO.

DESCRIPTION LEFT CENTER LINE RIGHT

141.

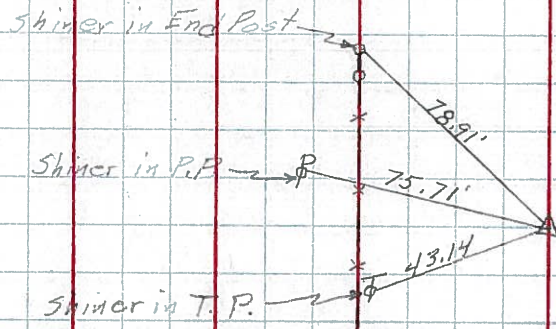
24



Sta. 595+44.77  
Found R.R. Spk.

142.

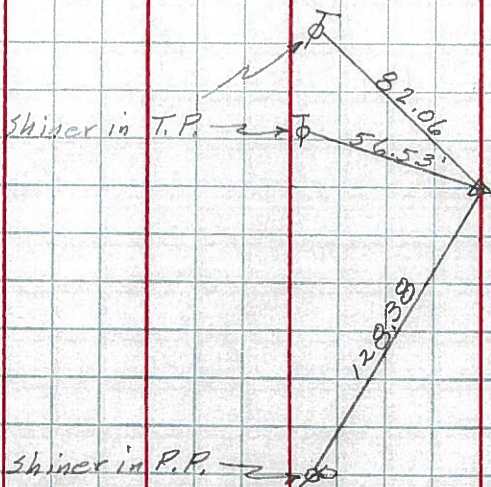
24-A



Sta. 621+88.45  
Found R.R. Spk.

143.

25



Sta. 648+35.70  
Found R.R. Spk.  
Int. Co. Rd. 24

PERSONNEL

TITLE

PERSONNEL

TITLE

Louys

COUNTY Wi.

DATE 3-3-58

S. R. 6

WEATHER

SEC. Relocation Over Rt. #384

TEMP. 30°

DESCRIPTION

Witnesses To Control Points

LEFT

CENTER LINE

RIGHT

JOB NO.

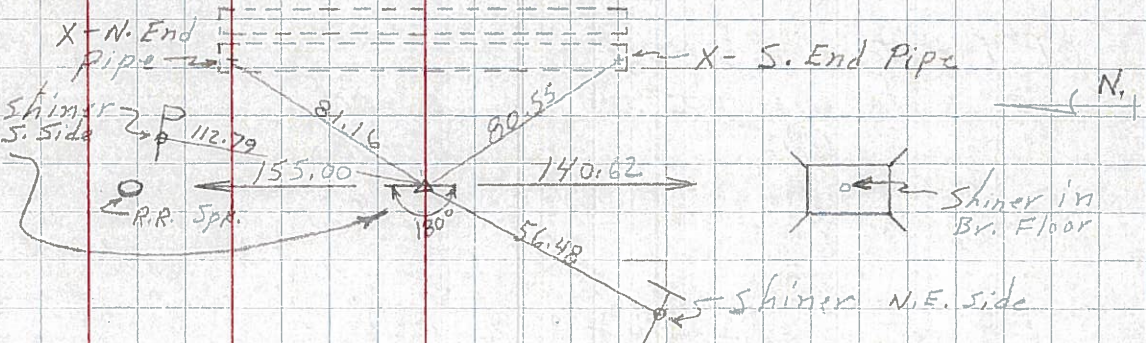
(25)

143

P.I. - Sta. 648+35.70

$\Delta = 0^{\circ} - 09' RT.$

Fd Stone (R.R. Spk.)



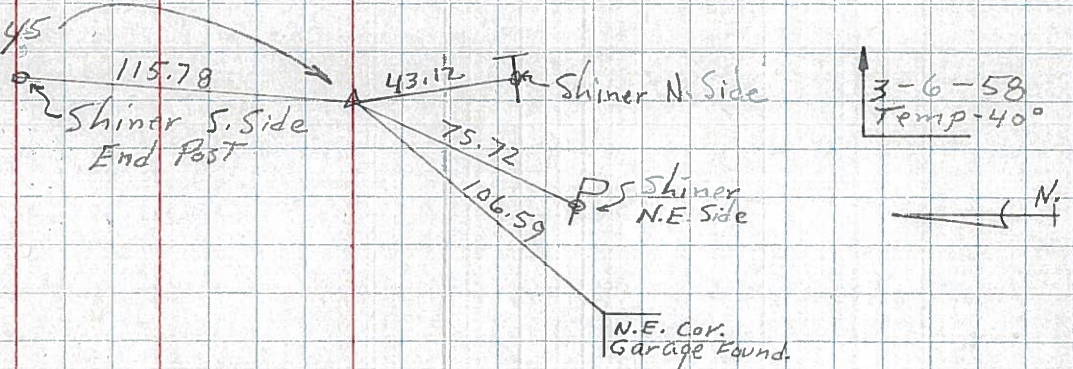
(24-A)

142

P.I. - Sta. 621+88.45

$\Delta = 0^{\circ} - 02' - 30'' RT.$

Fd Stone (R.R. Spk.)



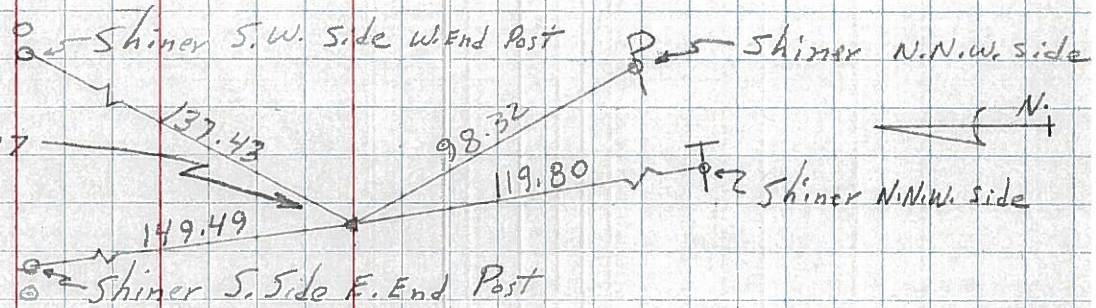
(24)

141

P.I. - Sta. 595+44.77

$\Delta = 0^{\circ} - 01' LT.$

Fd Stone (R.R. Spk.)

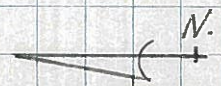


151

P.O.T. - Sta. 574+56.6

R.R. Spk. 47.79

N.W. Cor. Bottom conc. Block



150

P.O.T. - Sta. 562+55

& Rd. Rt.

R.R. Spk.