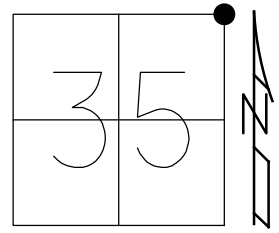


O.D.O.T. DISTRICT 2 SURVEY OFFICE (USE ONLY)

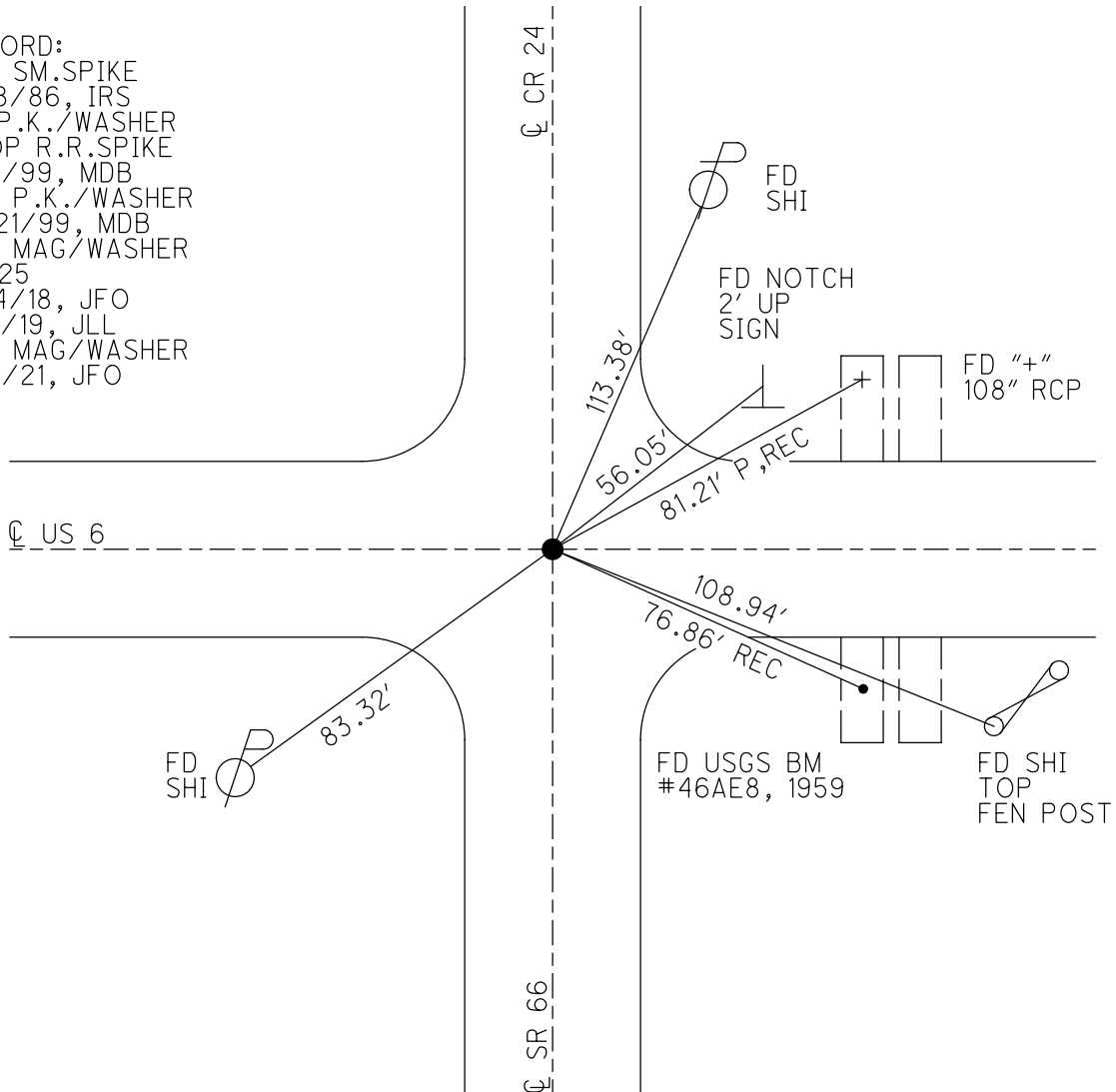
PERSONNEL _____ REFERENCE NO. 25 SHEET 6 OF 9
 NOTES AUBLE DATE 9/4/19 ROUTE US 6
 H.C. LEU WEATHER CLOUDY COUNTY WILLIAMS
 R.C. NASON TEMP. 71° TOWNSHIP SPRINGFIELD
 _____ NIESE SECTION 35
 DWG BY NIESE PID 95792 T 6 N R 4 E

TYPE MONUMENT MAG/WASHER
 ON SURFACE - ~~BELOW~~ ON
 OFFSET ☐ PAVEMENT ON LT : RT
- TO - EDGE PAVEMENT
 STATION: 1227+86.43



HORZ.DATUM: NAD83 2011 GEOID: NAVD 2012A
 GRID: NORTHING: 652278.780 EASTING: 1458291.034

RECORD:
 SET SM.SPIKE
 9/18/86, IRS
 FD P.K./WASHER
 ATOP R.R.SPIKE
 5/11/99, MDB
 SET P.K./WASHER
 10/21/99, MDB
 SET MAG/WASHER
 REF25
 2/14/18, JFO
 9/4/19, JLL
 SET MAG/WASHER
 1/14/21, JFO



O.D.O.T. DISTRICT 2 SURVEY OFFICE

PERSONNEL

REFERENCE NO. 25

SHEET 5 OF 7

NOTES CANTERBURY

H.C. Rousos

DATE 5-11-99

ROUTE US, #6

R.C. BARNHISEL

WEATHER FAIR

COUNTY WILLIAMS

TEMP. +72°

TOWNSHIP SPRINGFIELD

SECTION 25, 26, 35, 36

T.C. NR 4 E

TYPE MONUMENT P.K./WASHER ATOP R.R. SPK.

ON SURFACE - BELOW SURFACE

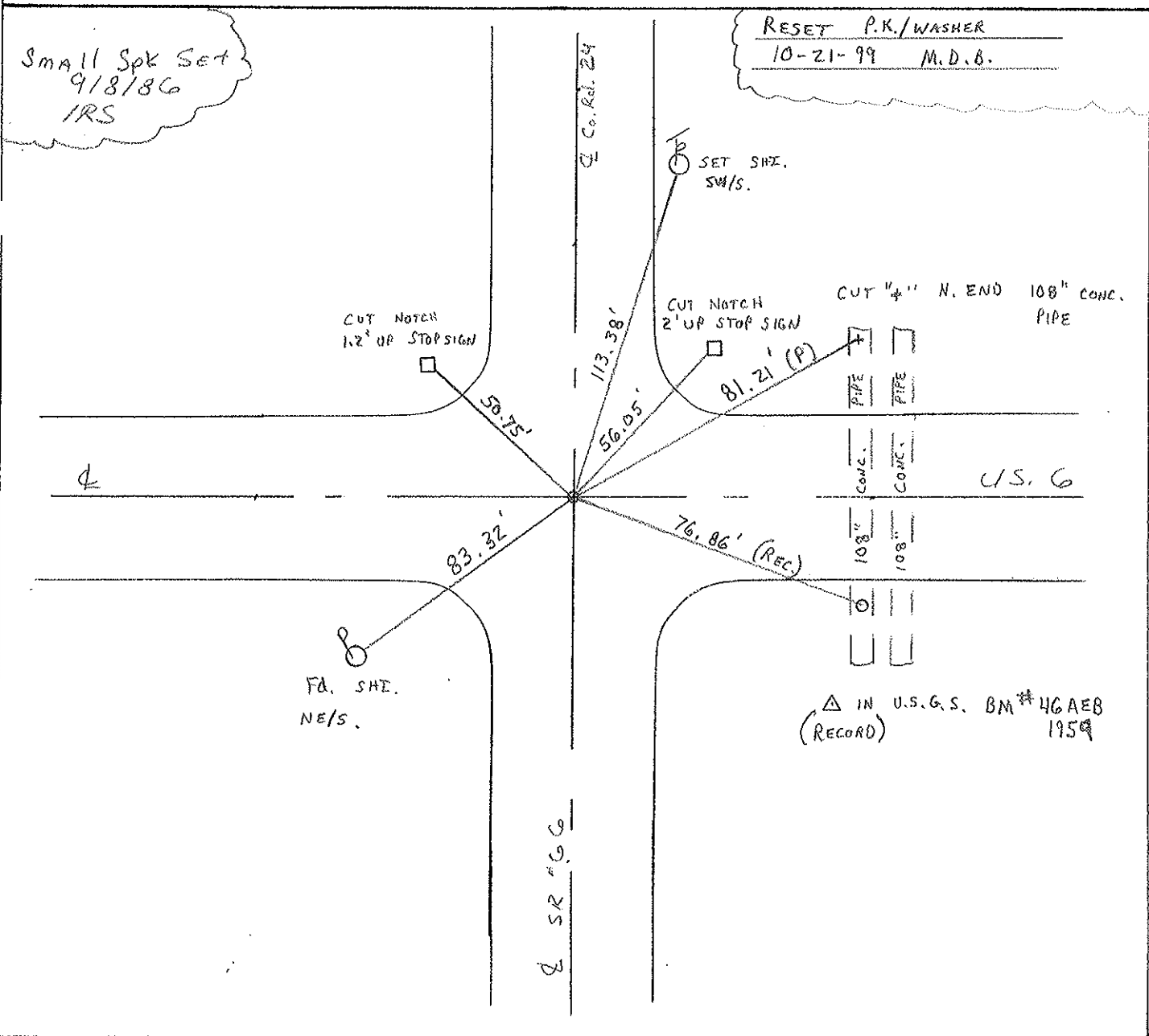
LEFT - ON PAV'T. - RIGHT ON E N & S

TO EDGE PAVEMENT

S.L.M. 1227 + 85 ±

37 + 424.868 SLK

26	25
35	36



O.D.O.T. DISTRICT 2 SURVEY OFFICE

PERSONNEL

REFERENCE NO. 25

SHEET 7 OF

NOTES 1. Stone

H.C. D. Curtis

DATE 5 Aug. 86

ROUTE US # 6

R.C. J. Hausholder

WEATHER Fair

COUNTY Williams

R. Michalak

TEMP. 80°

TOWNSHIP Springfield

SECTION 25-26-35-36

T R

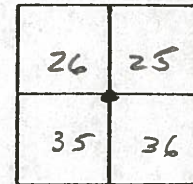
TYPE MONUMENT RR Spk.

ON SURFACE - BELOW 2" deep

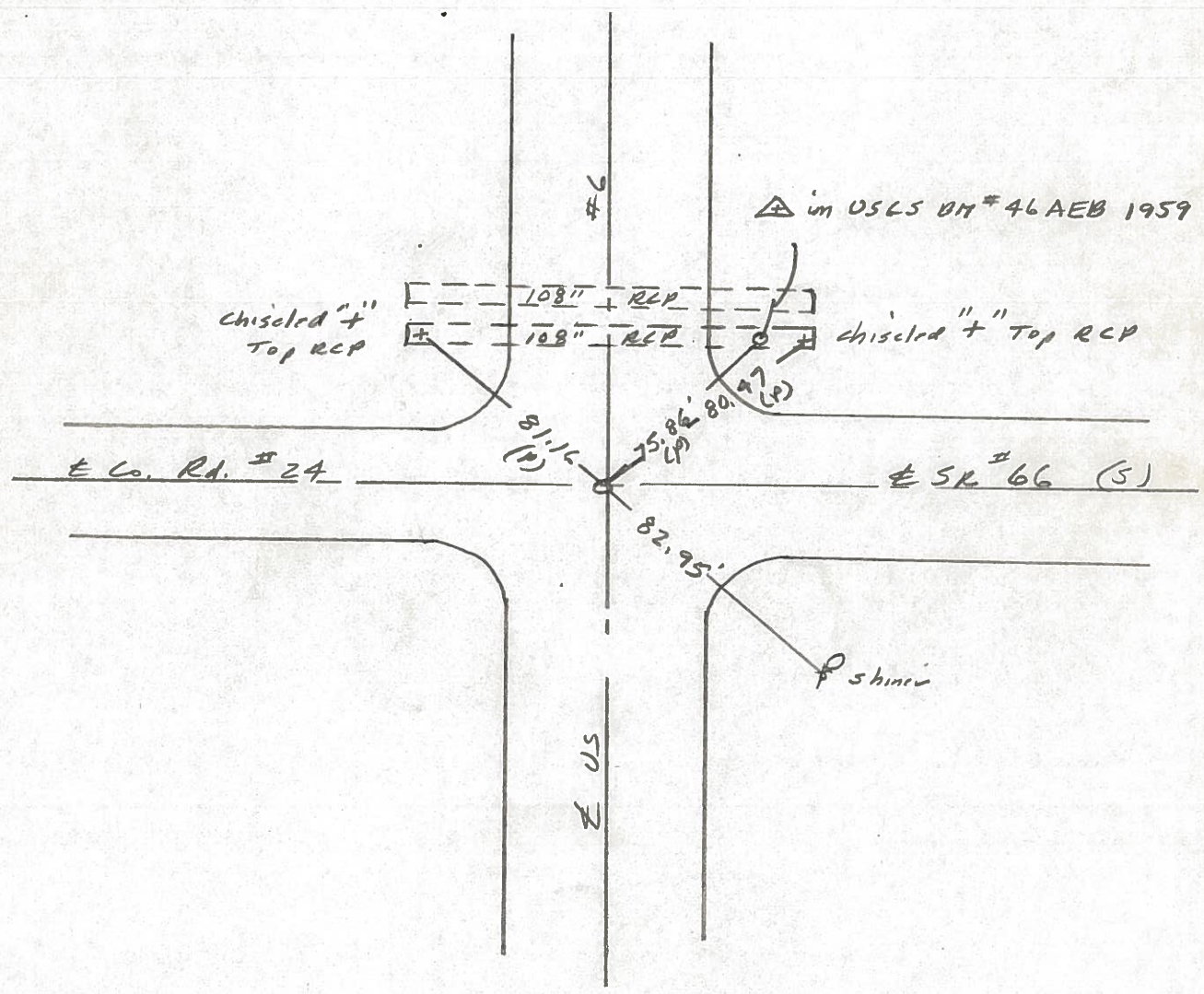
LEFT - \odot PAV'T. - RIGHT

TO EDGE PAVEMENT

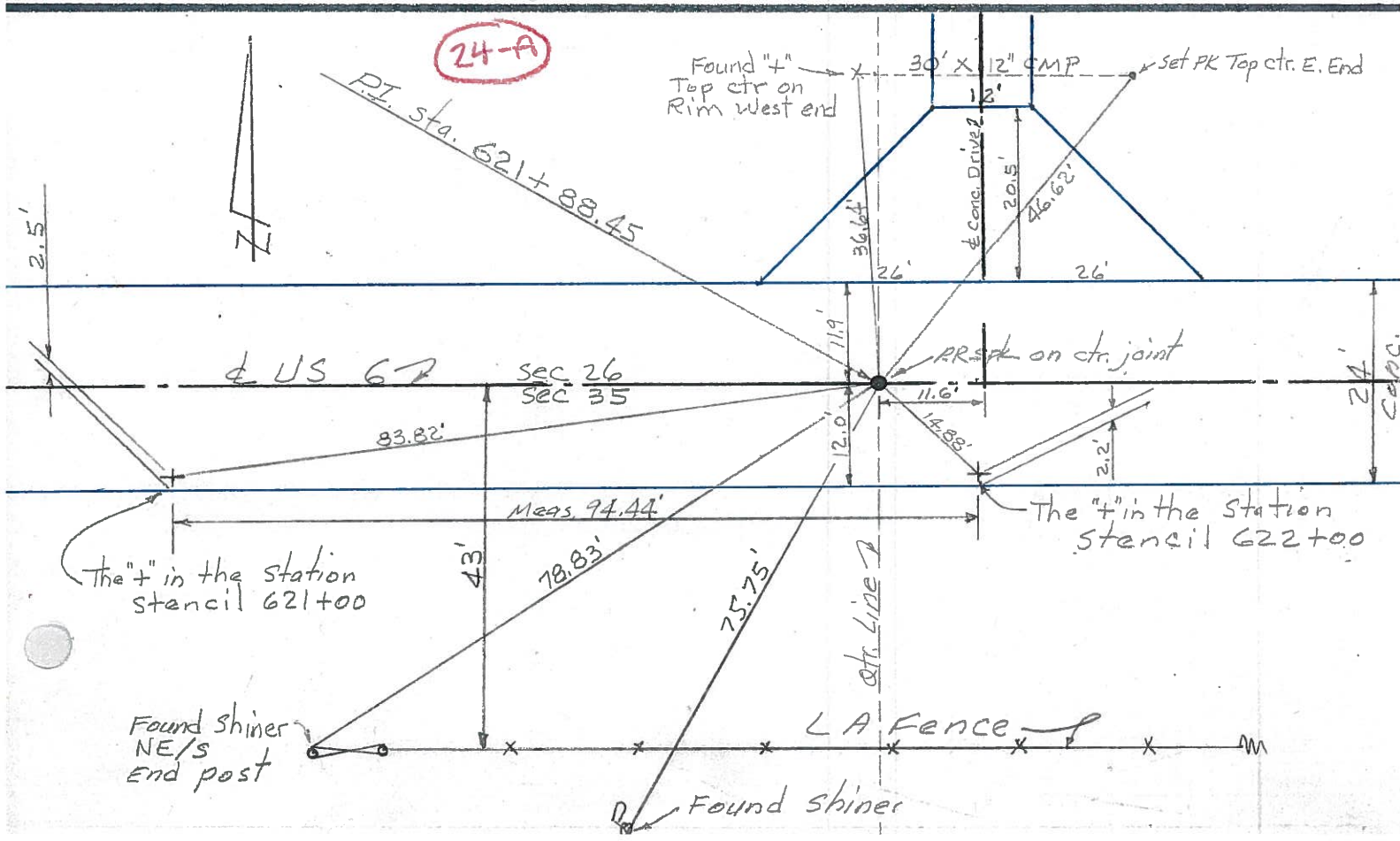
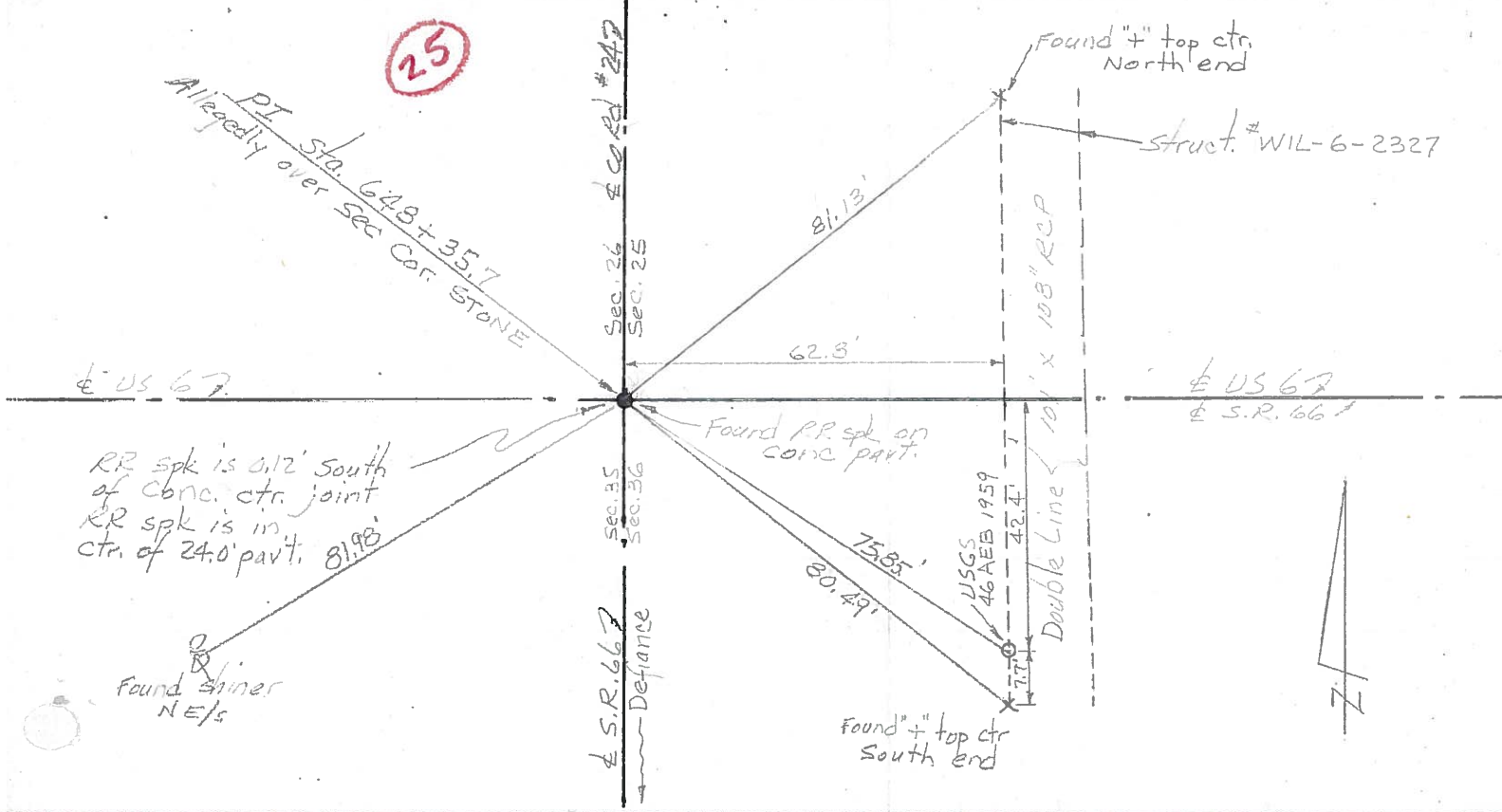
S.L.M. 1227+85±



Set Small Spk. 9/10/86 IRS



PERSONNEL	TITLE	PERSONNEL	TITLE	COUNTY	DATE	WEATHER	TEMP.	JOB NO.
Red Beach				Williams	Nov 75			
W. Knape				US 6				
				Springfield Twp				
DESCRIPTION CONTROL POINTS								



PERSONNEL TITLE PERSONNEL TITLE

COUNTY Williams DATE 12-13-60

Hoover _____

S. R. 6 WEATHER Fair

Ruffer _____

Delventhal _____

SEC. _____ TEMP. 15°

Young _____

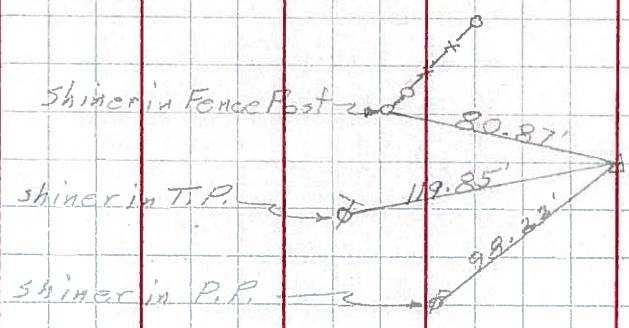
Mohler _____

DESCRIPTION _____ JOB NO. _____

LEFT CENTER LINE RIGHT

141.

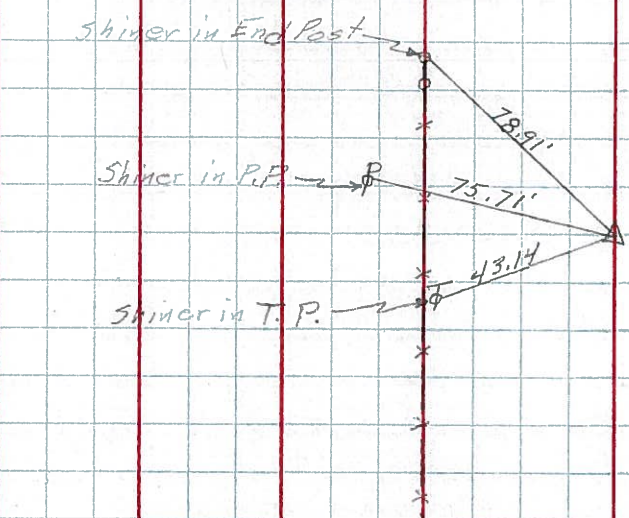
(24)



Sta. 595+44.77
Found R.R. Spk.

142.

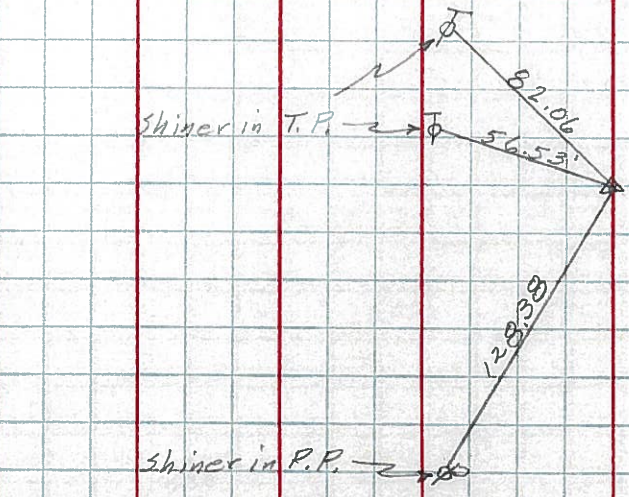
(24-A)



Sta. 621+88.45
Found R.R. Spk.

143.

(25)



Sta. 648+35.70
Found R.R. Spk.
Int. Co. Rd. 24

PERSONNEL

TITLE

PERSONNEL

TITLE

Louys

COUNTY Wi.

DATE 3-3-58

S. R. 6

WEATHER

SEC. Relocation Over Rt. #384

TEMP. 30°

DESCRIPTION Witnesses To Control Points

JOB NO. _____

LEFT

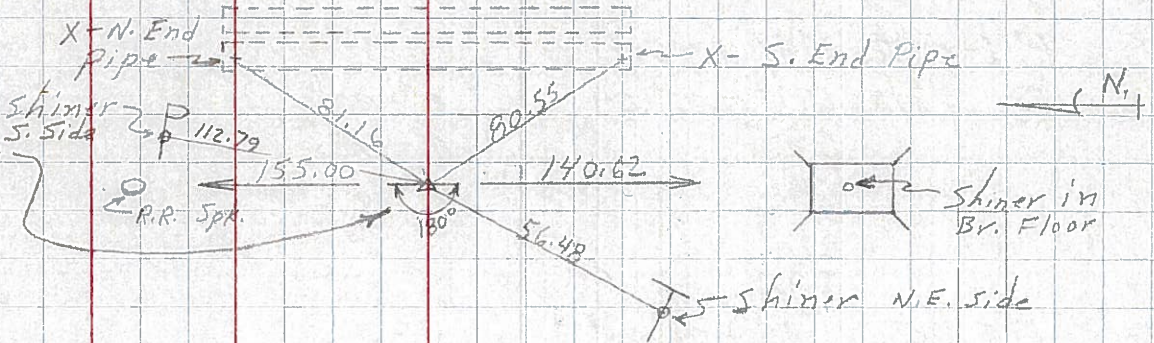
CENTER LINE

RIGHT

(25)

143

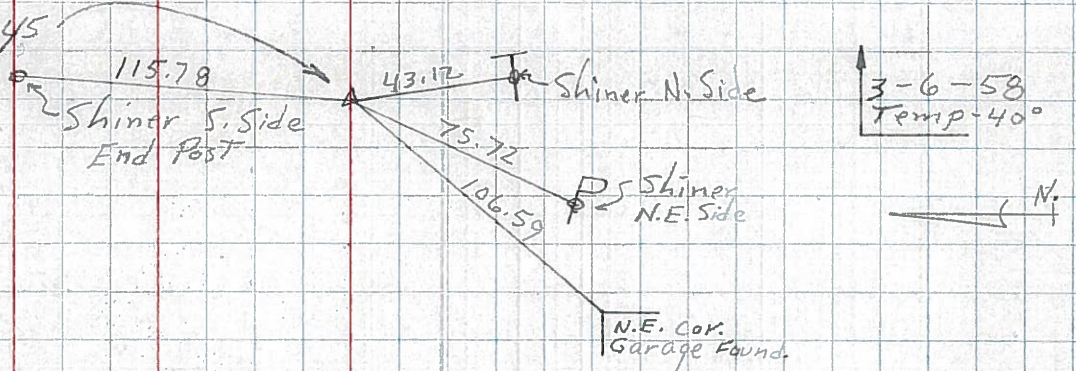
P.I. - Sta. 648+35.70
 $\Delta = 0^{\circ} - 09' \text{ Rt.}$
Fd Stone (R.R. Spk.)



(24-A)

142

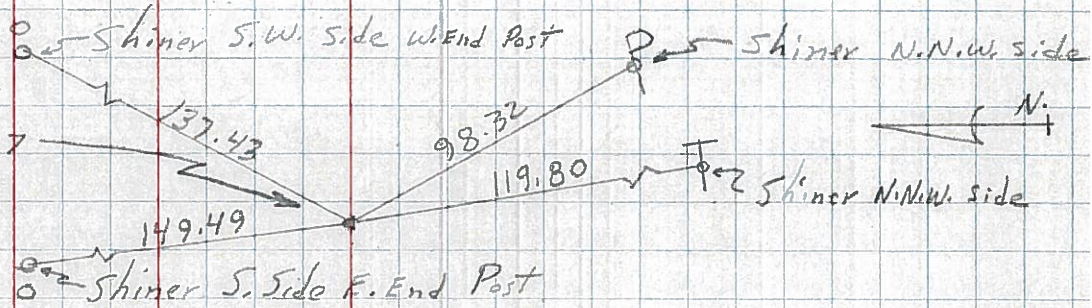
P.I. - Sta. 621+88.45
 $\Delta = 0^{\circ} - 02' - 30'' \text{ Rt.}$
Fd Stone (R.R. Spk.)



(24)

141

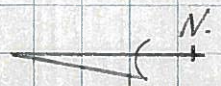
P.I. - Sta. 595+44.77
 $\Delta = 0^{\circ} - 01' \text{ Lt.}$
Fd Stone (R.R. Spk.)



151

P.O.T. - Sta. 574+56.6

R.R. Spk. | N.W. Cor. Bottom
47.79 | Conc. Block



150

P.O.T. - Sta. 562+55
& Rd. Rt.

R.R. Spk.