

O.D.O.T. DISTRICT 2 SURVEY OFFICE (USE ONLY)

PERSONNEL

REFERENCE NO. 25 A

SHEET 7 OF 9

NOTES AUBLE

DATE 9/4/19

ROUTE US 6

H.C. LEU

WEATHER CLOUDY

COUNTY WILLIAMS

R.C. NASON

TEMP. 72°

TOWNSHIP SPRINGFIELD

NIESE

SECTION 36

DWG BY NIESE PID 95792

T 6 N R 4 E

TYPE MONUMENT P.K.SHANK

ON SURFACE - ~~BELOW~~ ON

OFFSET ☑ PAVEMENT ON LT : RT

11.8' TO LT EDGE PAVEMENT

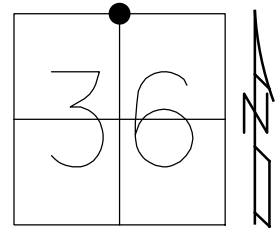
STATION: 1254+28.28

HORZ.DATUM: NAD83 2011

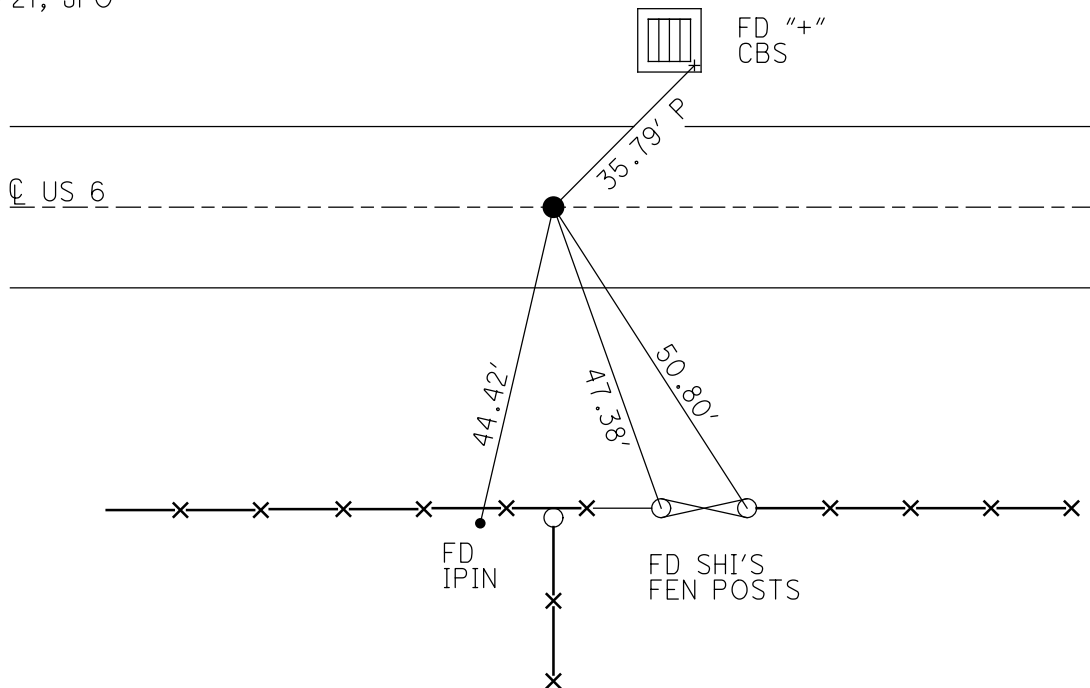
GEOID: NAVD88 2012A

GRID: NORTHING: 652225.196

EASTING: 1460932.349



RECORD:
 SM.R.R.SPIKE
 9/8/86, IRS
 FD R.R.SPIKE
 5/10/99, MDB
 SET P.K./WASHER
 10/21/99, MDB
 FD P.K./WASHER
 REFA25
 2/14/18, JFO
 FD P.K.SHANK
 9/4/19, JLL
 SET MAG/WASHER
 1/14/21, JFO



O.D.O.T. DISTRICT 2 SURVEY OFFICE

PERSONNEL

REFERENCE NO. 25-A

SHEET 6 OF 7

NOTES CANTERBURY

H.C. ROUSOS

R.C. BARNHISEL

DATE 5-10-99

WEATHER FAIR

TEMP. +75°F

ROUTE US 6

COUNTY Williams

TOWNSHIP Springfield

SECTION 25

T 6 N R 4 E

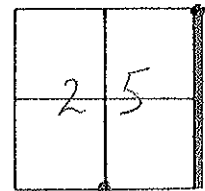
TYPE MONUMENT RR SPK

ON SURFACE - BELOW 2" DEEP

LEFT - CL PAV'T. - RIGHT 0.3 LT & PNT.

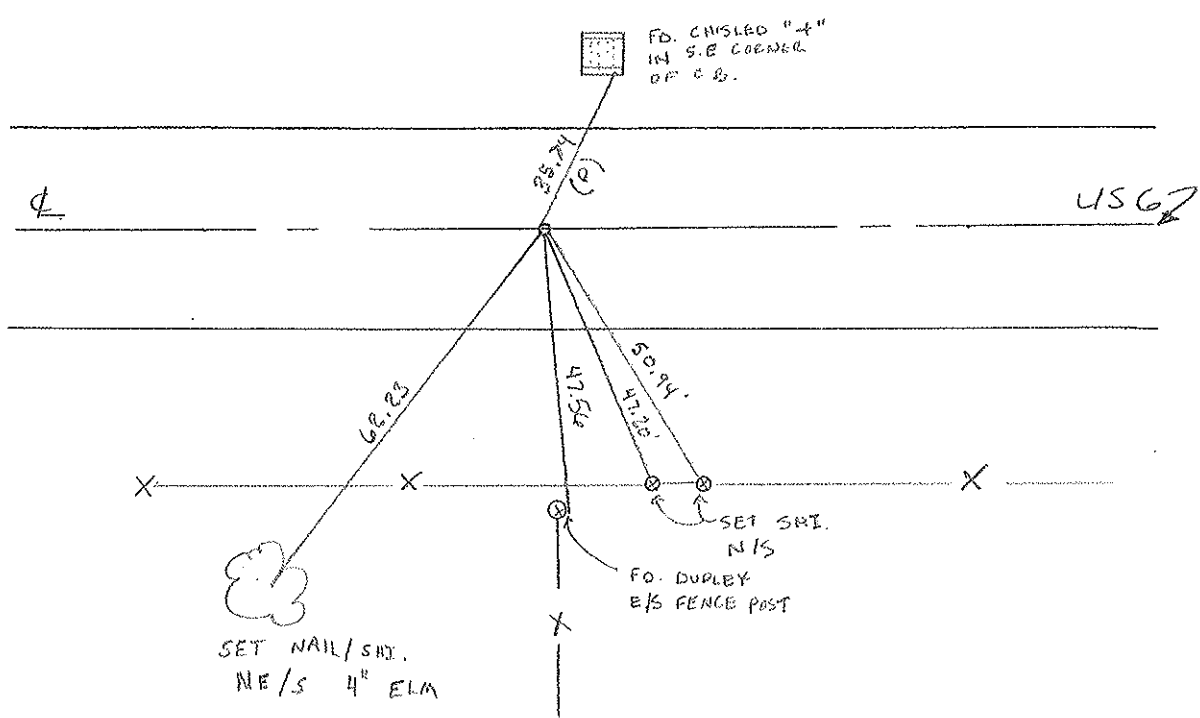
11.9 TO LT EDGE PAVEMENT

S.L.M. 1254+30 SLM 38+235.86 SLK



5m, RR, Spk.
9-8-86
IRS

Re-ses pk WASARL
10-21-99
MR. B



O.D.O.T. DISTRICT 2 SURVEY OFFICE

PERSONNEL

REFERENCE NO. 25-A

SHEET 5 OF

NOTES 1. Stone

H.G. D. Curtis

DATE 5 Aug. 86

ROUTE US 46

R.C. R. Michalak

WEATHER Fair

COUNTY Williams

J. Hausholder

TEMP. 80°

TOWNSHIP Springfield

SECTION 25

T R

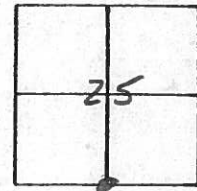
TYPE MONUMENT RR Spk.

ON SURFACE - BELOW 2" deep

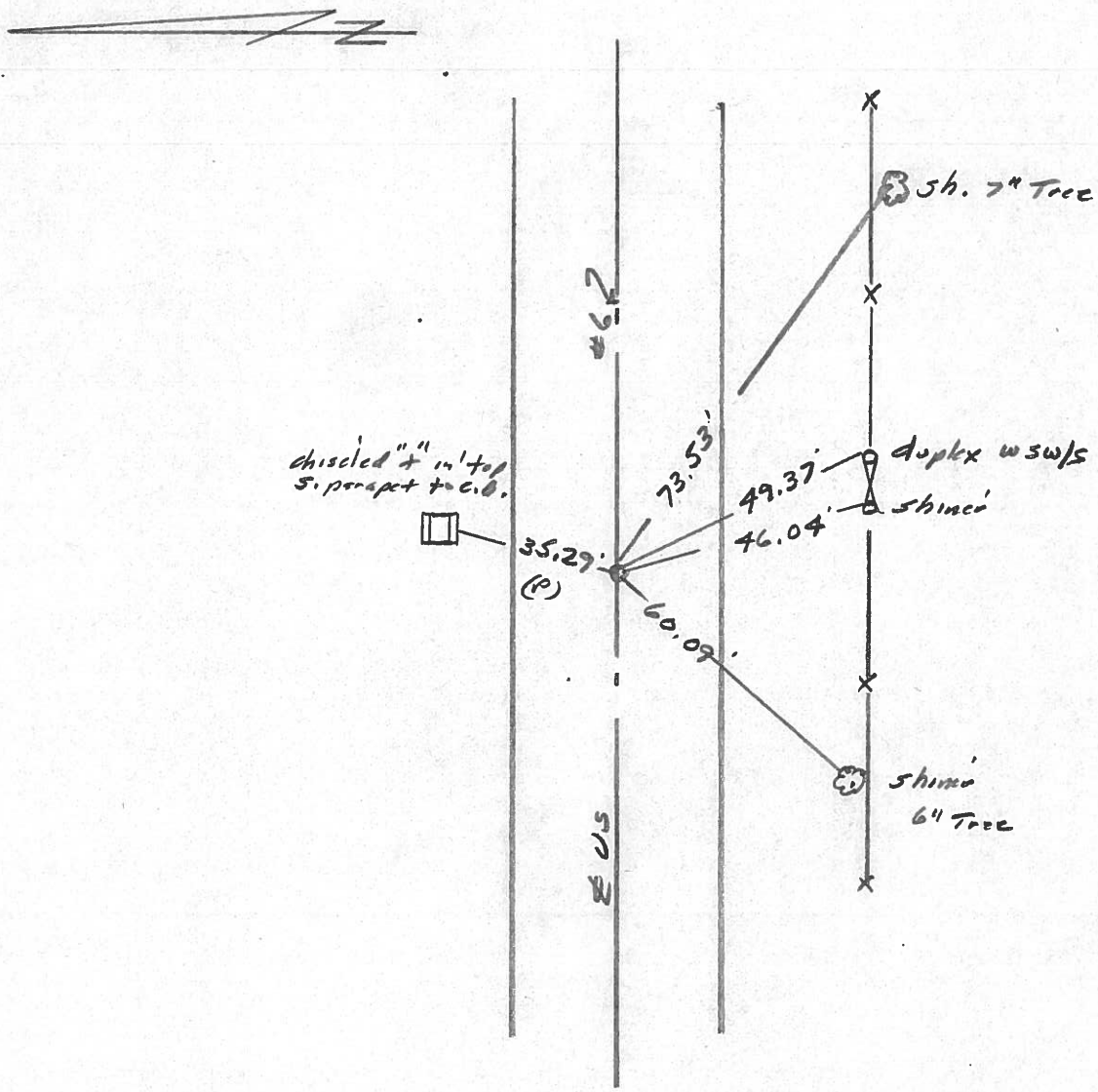
LEFT - ☉ PAV'T. - RIGHT ☉ put.

 TO EDGE PAVEMENT

S.L.M. 1254+30



Set small RR Spk 9/8/86
I.R.S.



PERSONNEL TITLE PERSONNEL TITLE

Red Beach
W. Krape

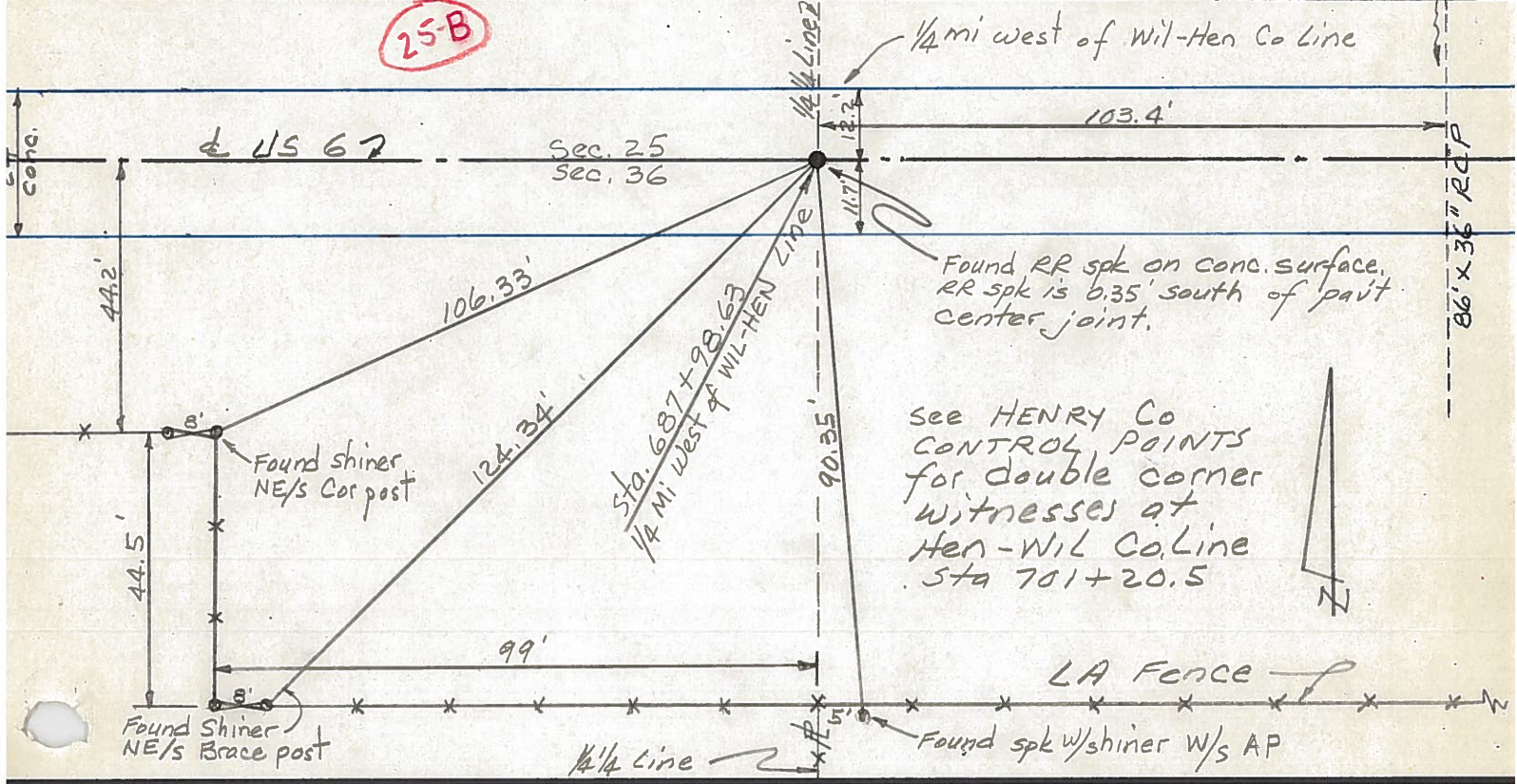
COUNTY Williams DATE 14 Nov 1975

S. R. US 6 WEATHER

SEC. Springfield Twp. TEMP.

DESCRIPTION CONTROL POINTS JOB NO.

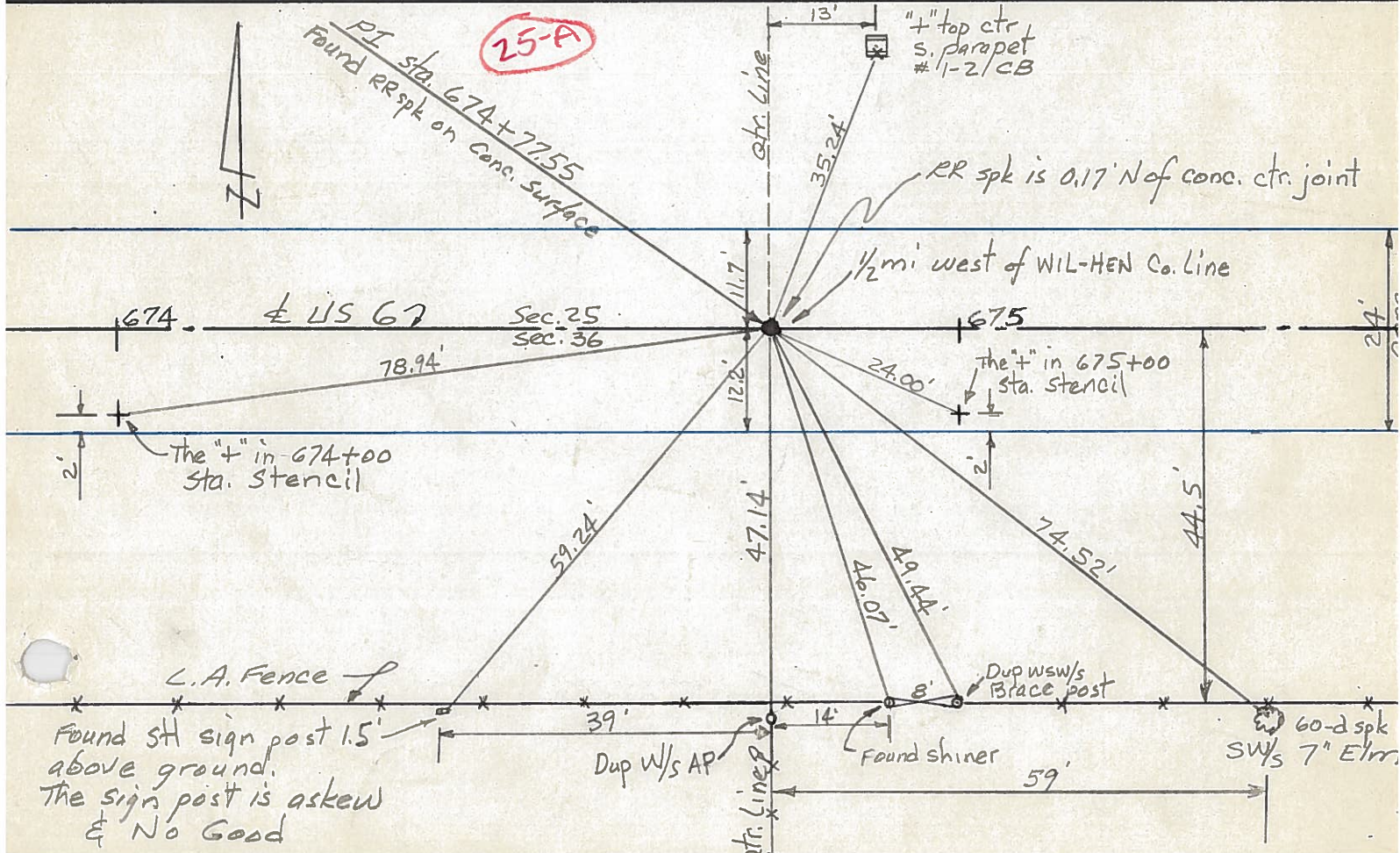
25-B



see HENRY Co CONTROL POINTS for double corner witnesses at Hen-Wil Co Line Sta 701+20.5

LA Fence

25-A



L.A. Fence

Found st sign post 1.5' above ground. The sign post is askew & No Good

PERSONNEL TITLE PERSONNEL TITLE

COUNTY Williams DATE 12-13-60

Hoover

Ruffer

Delventhal

Young

Mahler

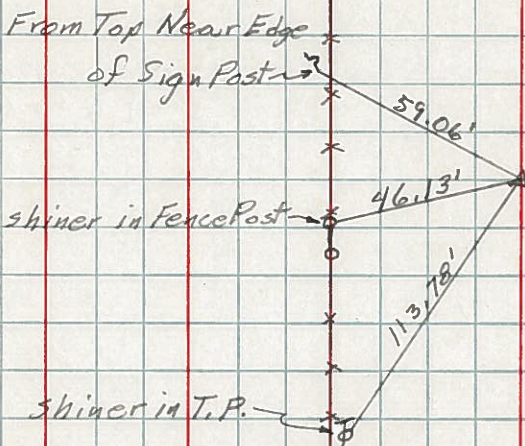
S. R. 6 WEATHER Fair

SEC. TEMP. 20°

DESCRIPTION LEFT CENTER LINE RIGHT JOB NO.

144.

25-A

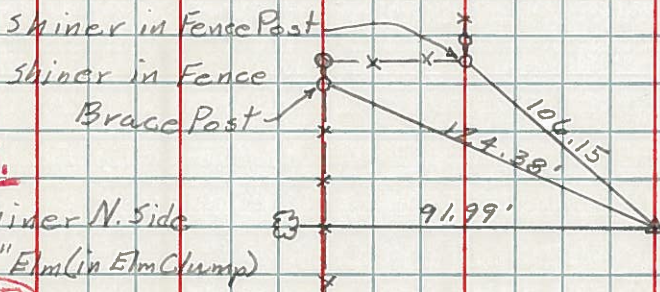


Sta 674+77.55
Found. R.R. Spk



145.

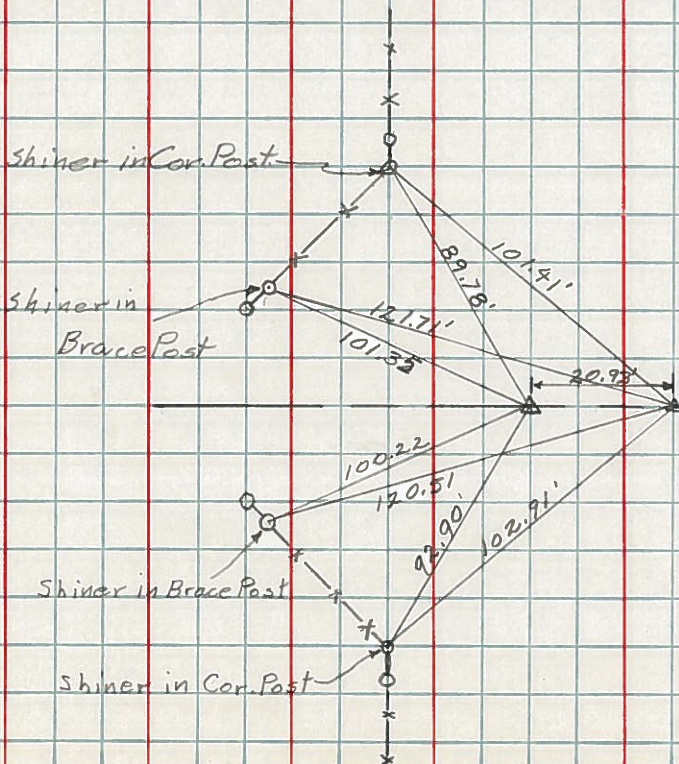
25-B



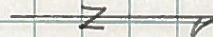
Sta. 687+98.63
Found R.R. Spk.



146.



Wms - Henry Co. Line



PERSONNEL

TITLE

PERSONNEL

TITLE

Louys

COUNTY Wi.

DATE 3-6-58

S. R. 6

WEATHER

SEC Relocation Over Pt #384

TEMP. 40°

DESCRIPTION

Witnesses to Control Points.

JOB NO.

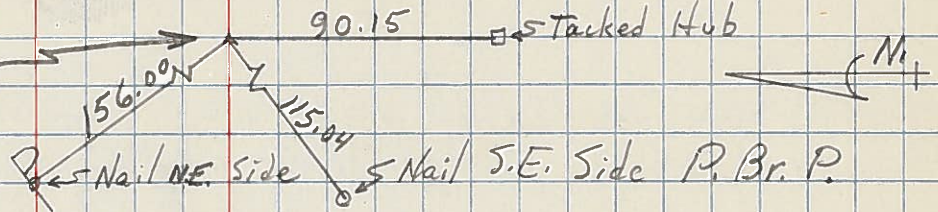
LEFT

CENTER LINE

RIGHT

149

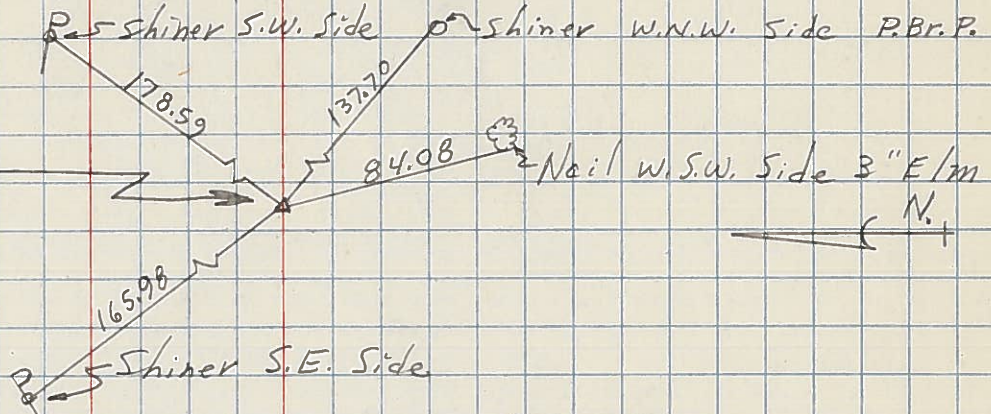
P.T. = sta. 698+74.65



148

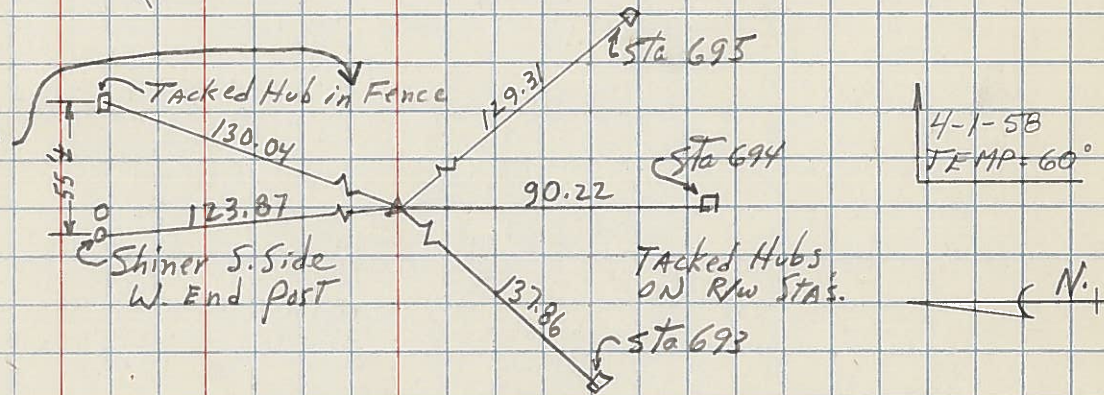
P.I. - sta. 696+40.1

$\Delta = 1^\circ - 15' LT$



147

P.C. - sta. 694+05.09



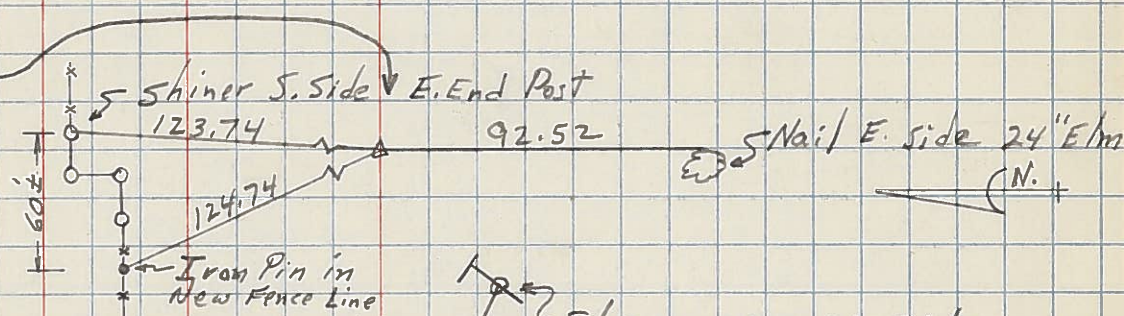
4-1-58
TEMP. 60°

25-B 145

R/W only

P.I. - sta. 687+98.63

(Point is 0.20 ft. of a straight line between 1/2 M. pts.)
Fd Stone (R.R. SPK)

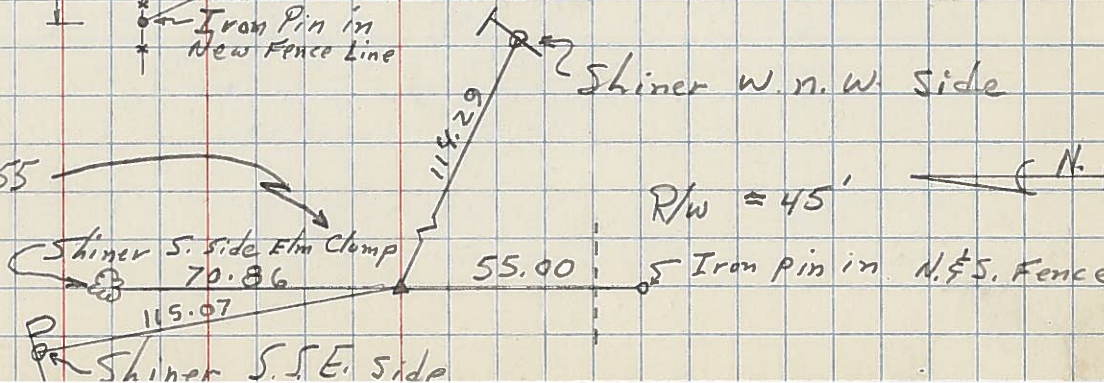


25-A 144

P.I. - sta. 674+77.55

$\Delta = 0^\circ - 02' RT$

Fd Stone (R.R. SPK)



R/W = 45'