

O.D.O.T. DISTRICT 2 SURVEY OFFICE (USE ONLY)

PERSONNEL _____ REFERENCE NO. 25 B SHEET 8 OF 9
NOTES O'DONNELL DATE 2/14/18 ROUTE US 6
H.C. _____ WEATHER FAIR COUNTY WILLIAMS
R.C. _____ TEMP. 33° TOWNSHIP SPRINGFIELD
DWG BY NIESE PID 95792 SECTION 36
T 6 N R 4 E

TYPE MONUMENT D.N.F. R.R. SPIKE

~~ON SURFACE~~ - BELOW 2"

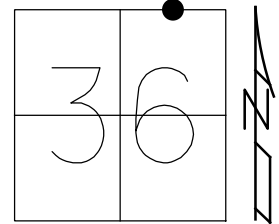
OFFSET \odot PAVEMENT 0.35' ~~RT~~ : RT

- TO - EDGE PAVEMENT

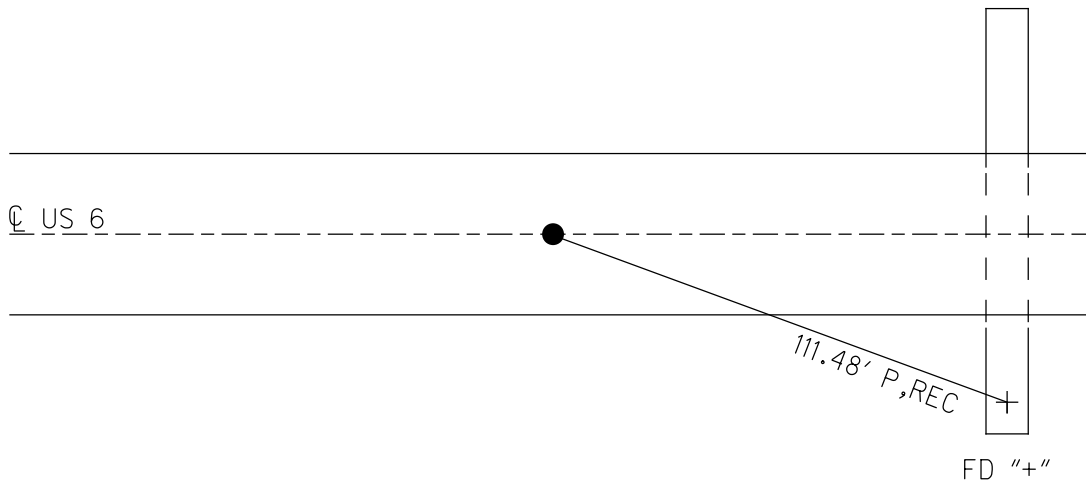
STATION: 1267+51

HORZ. DATUM: NAD83 2011 GEOID: NAVD88 2012A

GRID: NORTHING: - EASTING: -



RECORD:
SET SM R.R. SPIKE
9/08/86, IRS
D.N.F.
2/14/18, JFO



O.D.O.T. DISTRICT 2 SURVEY OFFICE

PERSONNEL

REFERENCE NO. 25-B

SHEET 7 OF 7

NOTES CANTERBURY

H.C. RAUSOS

R.C. BARNHISEL

DATE 5-10-99

WEATHER FAIR

TEMP. +75° F

ROUTE US 6

COUNTY Williams

TOWNSHIP Springfield

SECTION 25

T 6 N R 4 E

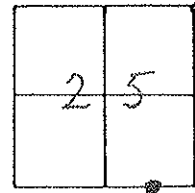
TYPE MONUMENT RR spk

ON SURFACE - BELOW 2" DEEP

LEFT-CL PAV'T. - RIGHT 0.35 s. of CL

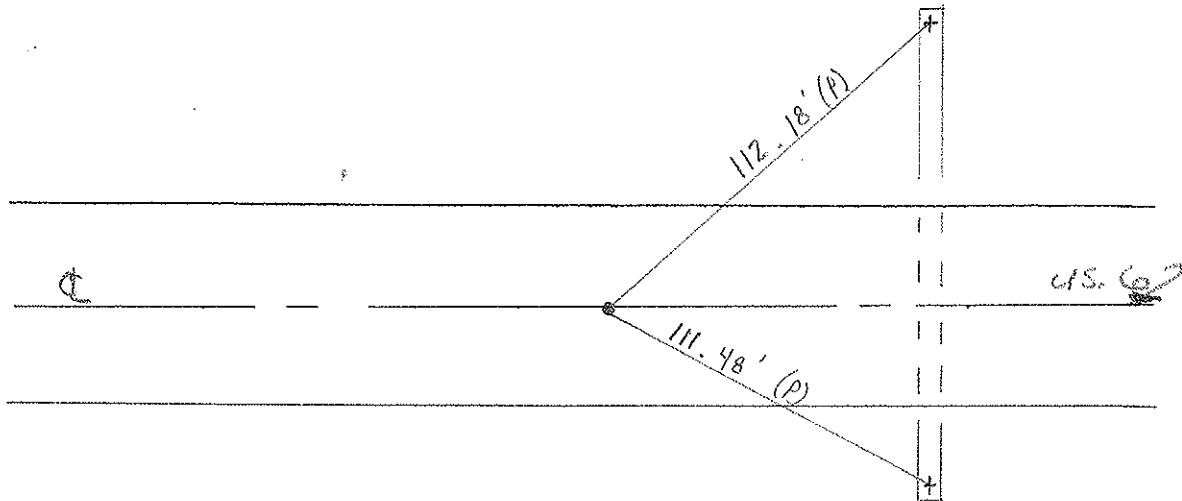
TO EDGE PAVEMENT

S.L.M. 1267+51



*Sm RR Spk set
9-8-86
IRS*

COULD NOT RE-ESTABLISH
Dug DOWN 6" TO CONCRETE
AND FOUND NOTHING.



O.D.O.T. DISTRICT 2 SURVEY OFFICE

PERSONNEL

REFERENCE NO. 25-B

SHEET 6 OF

NOTES L. Stone

H.C. D. Curtis

R.C. R. Michalek

J. Hauscholder

DATE 5 Aug 86

WEATHER Fair

TEMP. 80°

ROUTE US # 6

COUNTY Williams

TOWNSHIP Springfield

SECTION 25

T R

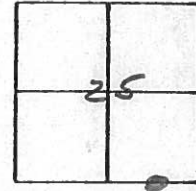
TYPE MONUMENT RR Spk

ON SURFACE - BELOW 2" deep

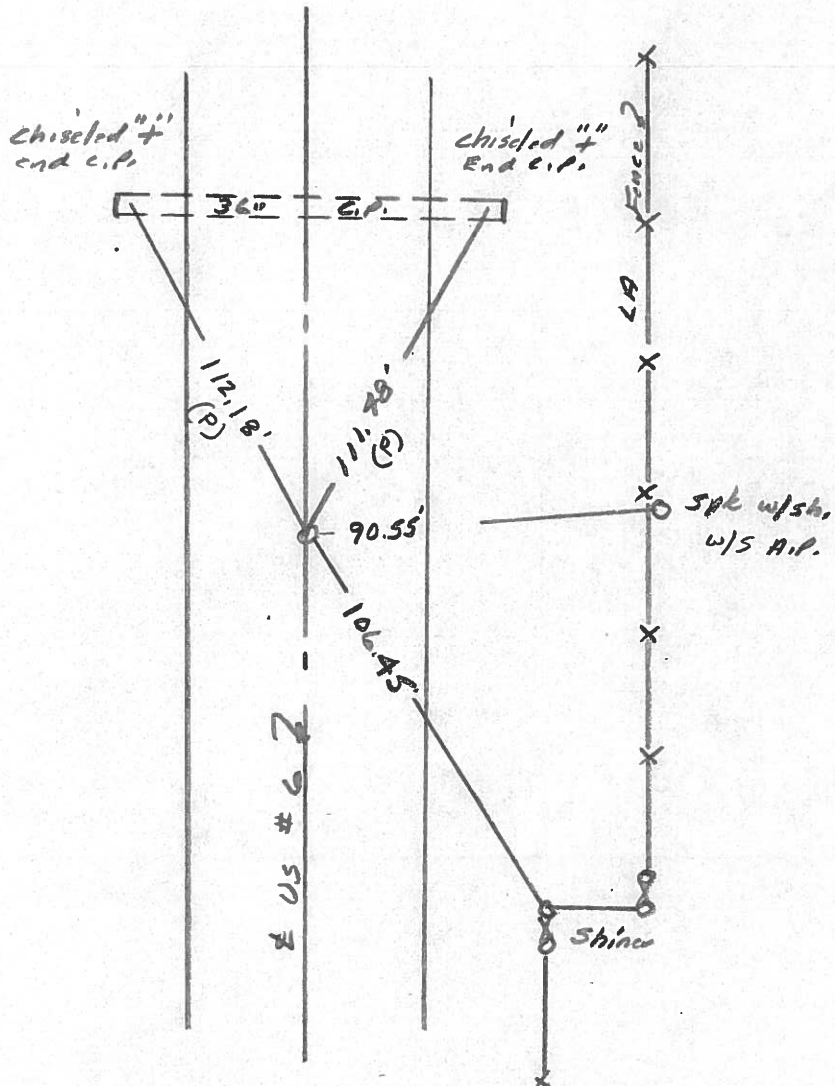
LEFT - ☉ PAV'T. - RIGHT .35 S. of E. pt.

TO EDGE PAVEMENT

S.L.M. 1267+51



*Set small RR Spk 9/8/86
I.R.S.*



PERSONNEL TITLE PERSONNEL TITLE

Red Beach
W. Knope

COUNTY Williams

DATE 14 Nov 1975

S. R. US 6

WEATHER

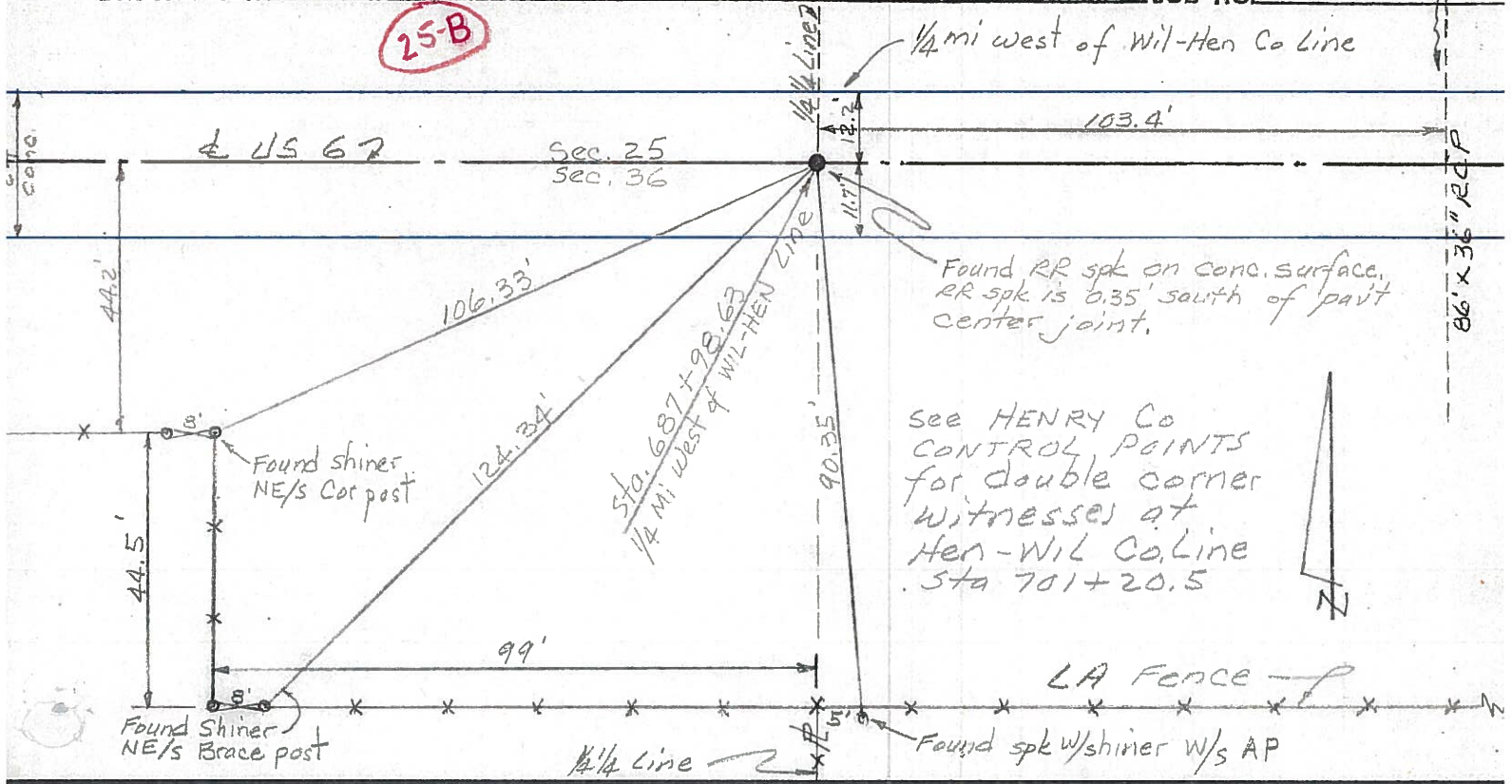
SEC. Springfield Twp. TEMP

DESCRIPTION

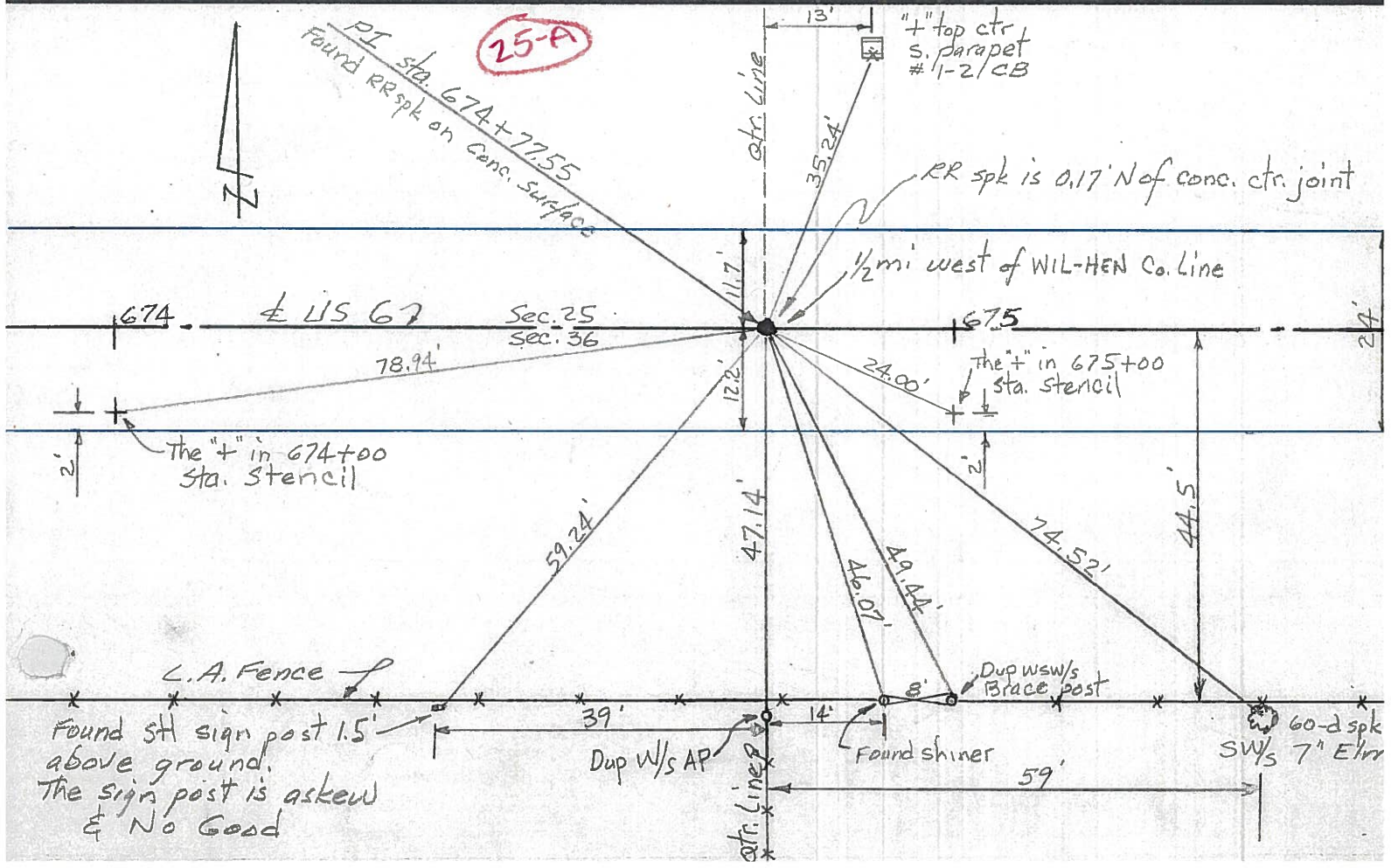
CONTROL POINTS

JOB NO.

25-B



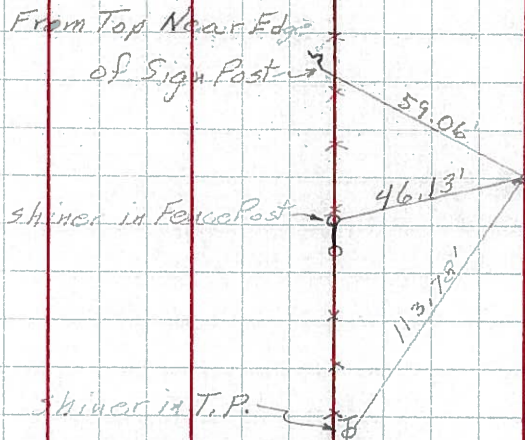
25-A



| PERSONNEL | TITLE | PERSONNEL | TITLE | COUNTY | DATE | WEATHER | TEMP |
|-------------|-------|-------------|-------|----------|----------|---------|------|
| Hoover | | | | Williams | 12-13-60 | Fair | 20° |
| Ruffer | | | | S. R. 6 | | | |
| Delventhal | | | | | | | |
| Young | | | | SEC. | | | |
| Mohler | | | | | | | |
| DESCRIPTION | LEFT | CENTER LINE | RIGHT | JOB NO. | | | |

144.

25-A

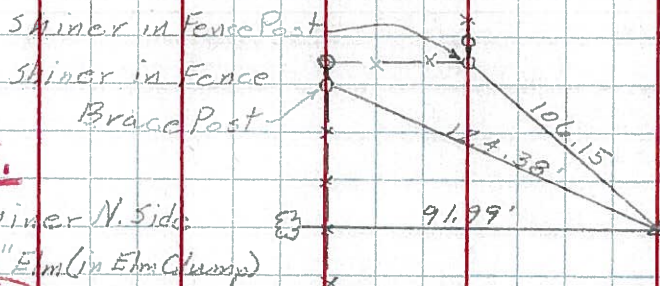


Sta 674+77.55
Found R.R. Spk



145.

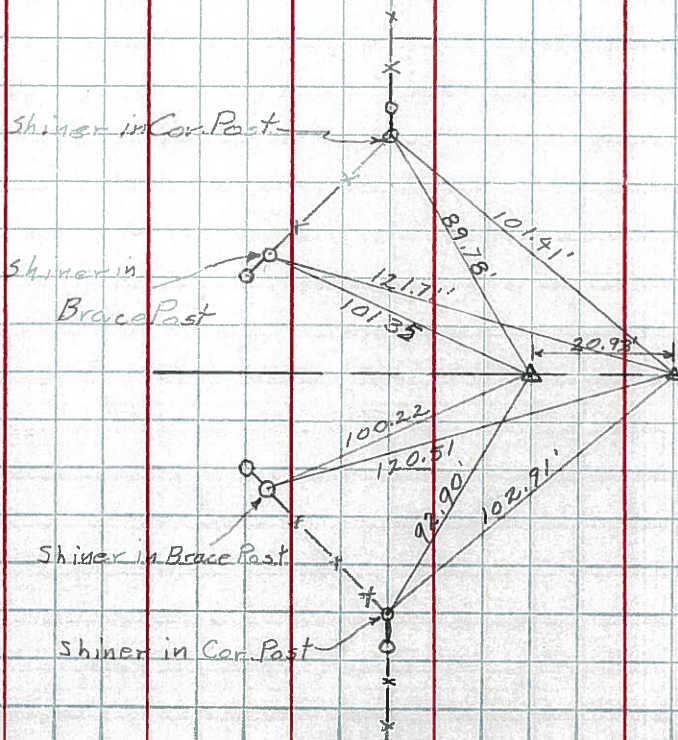
25-B



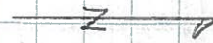
Sta. 687+98.63
Found R.R. Spk.



146.



Wms - Henry Co. Line



PERSONNEL TITLE PERSONNEL TITLE

Louys

COUNTY Wi.

DATE 3-6-58

S. R. 6

WEATHER

SEC Relocation Over Pt #384

TEMP. 40°

DESCRIPTION Witnesses to Control Points.

LEFT

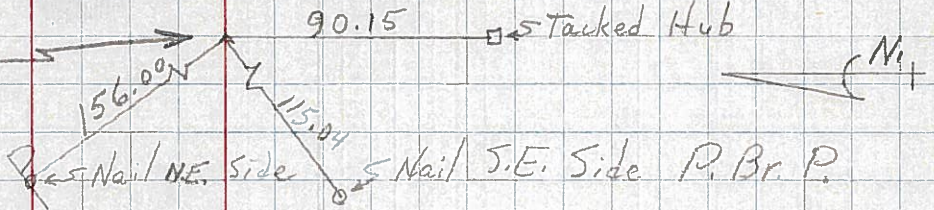
CENTER LINE

RIGHT

JOB NO.

149

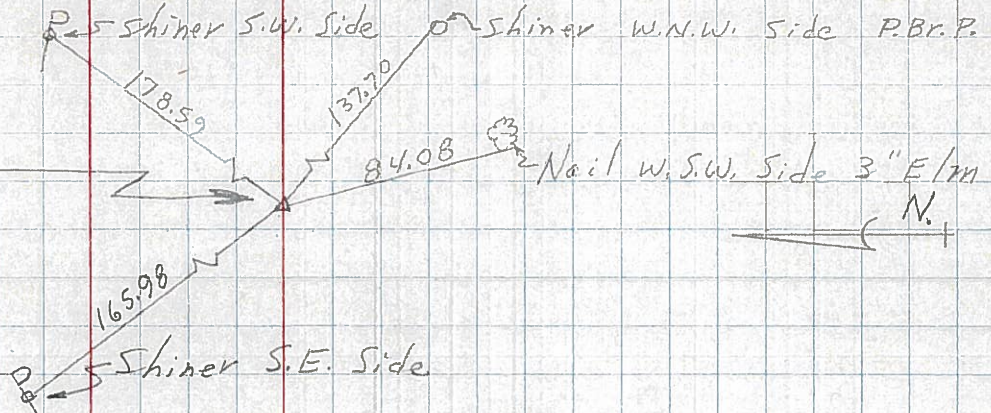
P.T. = sta. 698+74.65



148

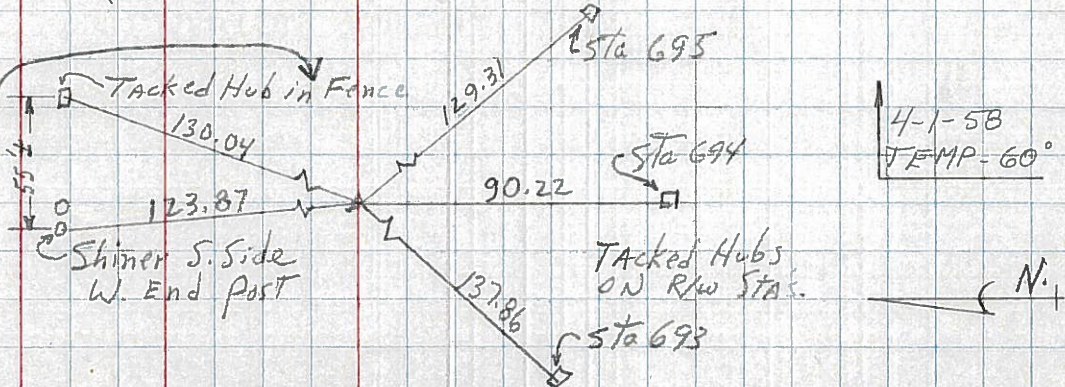
P.I. = sta. 696+40.1

Δ = 1°-15' LT



147

P.C. = sta. 694+05.09



4-1-58
TEMP - 60°

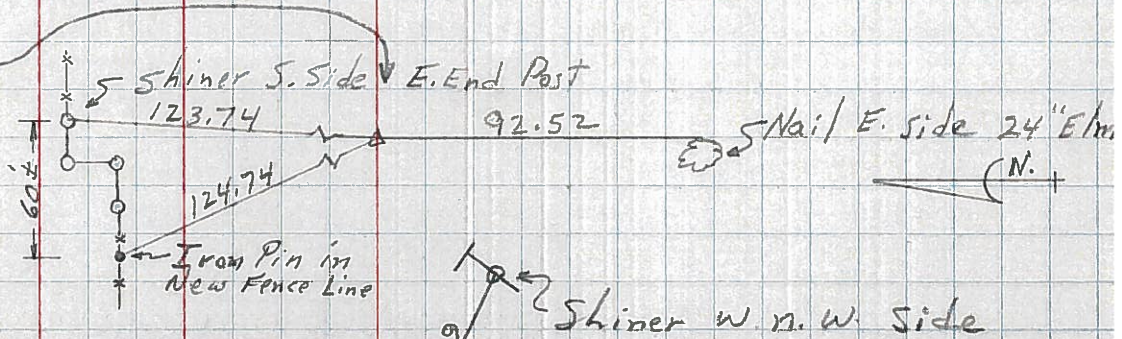
25-B

145

R/W only

P.I. = sta. 687+98.63

(Point is 0.20 RT. OF a straight line between 1/2 Mi. pts.)
Fd Stone (R.R. SPK.)



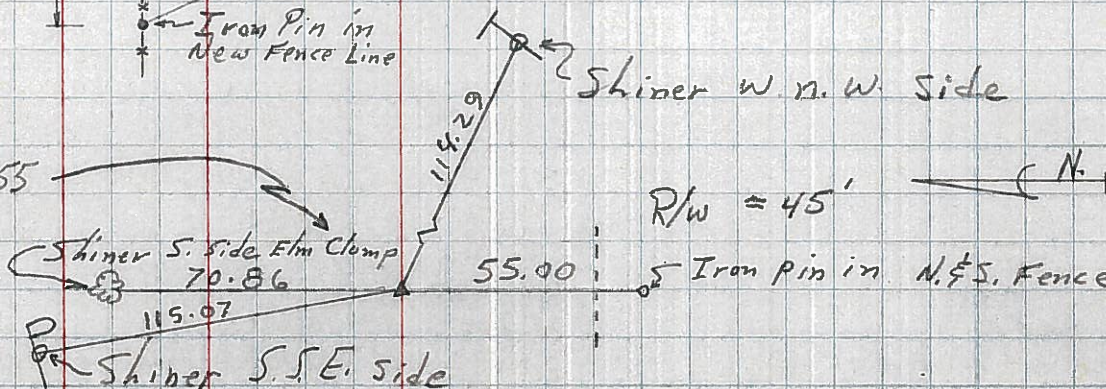
25-A

144

P.I. = sta. 674+77.55

Δ = 0°-02' Rt.

Fd Stone (R.R. SPK.)



R/W = 45'