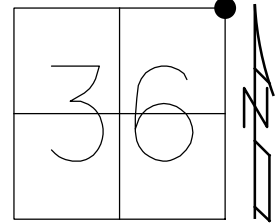


O.D.O.T. DISTRICT 2 SURVEY OFFICE (USE ONLY)

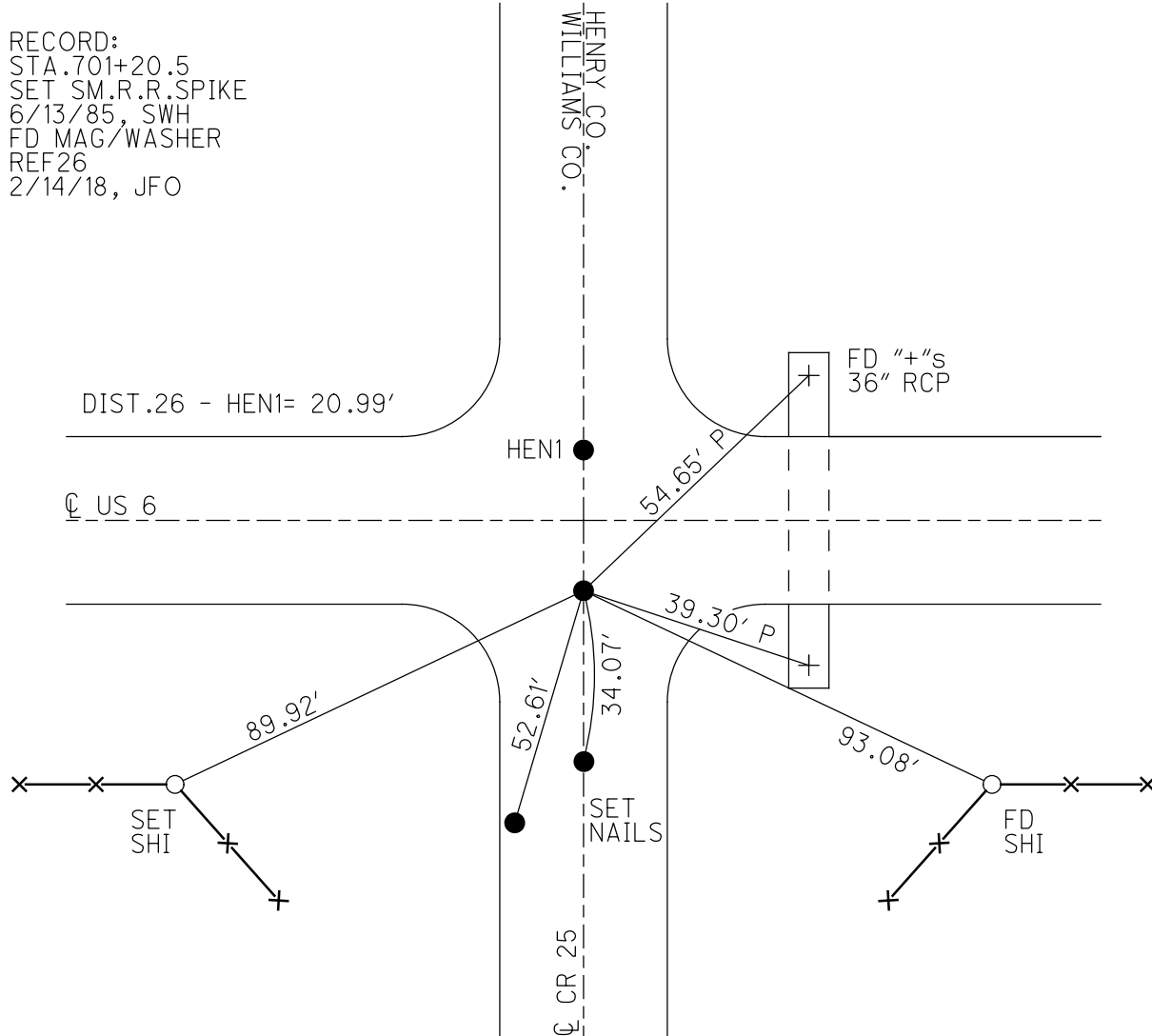
PERSONNEL _____ REFERENCE NO. 26 SHEET 9 OF 9
 NOTES HOFFMAN DATE 5/6/85 ROUTE US 6
 H.C. BARNHISEL WEATHER CLOUDY COUNTY WILLIAMS
 R.C. HOFFMAN TEMP. 65° TOWNSHIP SPRINGFIELD
 SECTION 36
 DWG BY NIESE PID 95792 T 6 N R 4 E

TYPE MONUMENT R.R. SPIKE
~~ON SURFACE~~ - BELOW 1 1/2"
 OFFSET 10.5' ET : RT
- TO - EDGE PAVEMENT
 STATION: 1280+69.09



HORZ. DATUM: NAD83 2011 GEOID: NAVD88 2012A
 GRID: NORTHING: 652170.116 EASTING: 1463572.583

RECORD:
 STA. 701+20.5
 SET SM.R.R. SPIKE
 6/13/85, SWH
 FD MAG/WASHER
 REF 26
 2/14/18, JFO



O.D.O.T. DISTRICT 2 SURVEY OFFICE

PERSONNEL

REFERENCE NO. 1

SHEET 1 OF 7

NOTES COZDES

H.C. LOEHRKE

DATE 4-14-97

ROUTE 6

R.C. MOSER

WEATHER SUN

COUNTY HENRY

9 HUSS

TEMP. +4°C

TOWNSHIP RIDGEVILLE

SECTION 30

T. 6 N. R. 5 E.

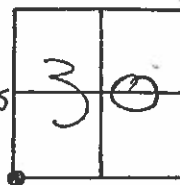
TYPE MONUMENTS sm. RR SPIKES

~~sm. RR SPIKES~~ - BELOW 1"

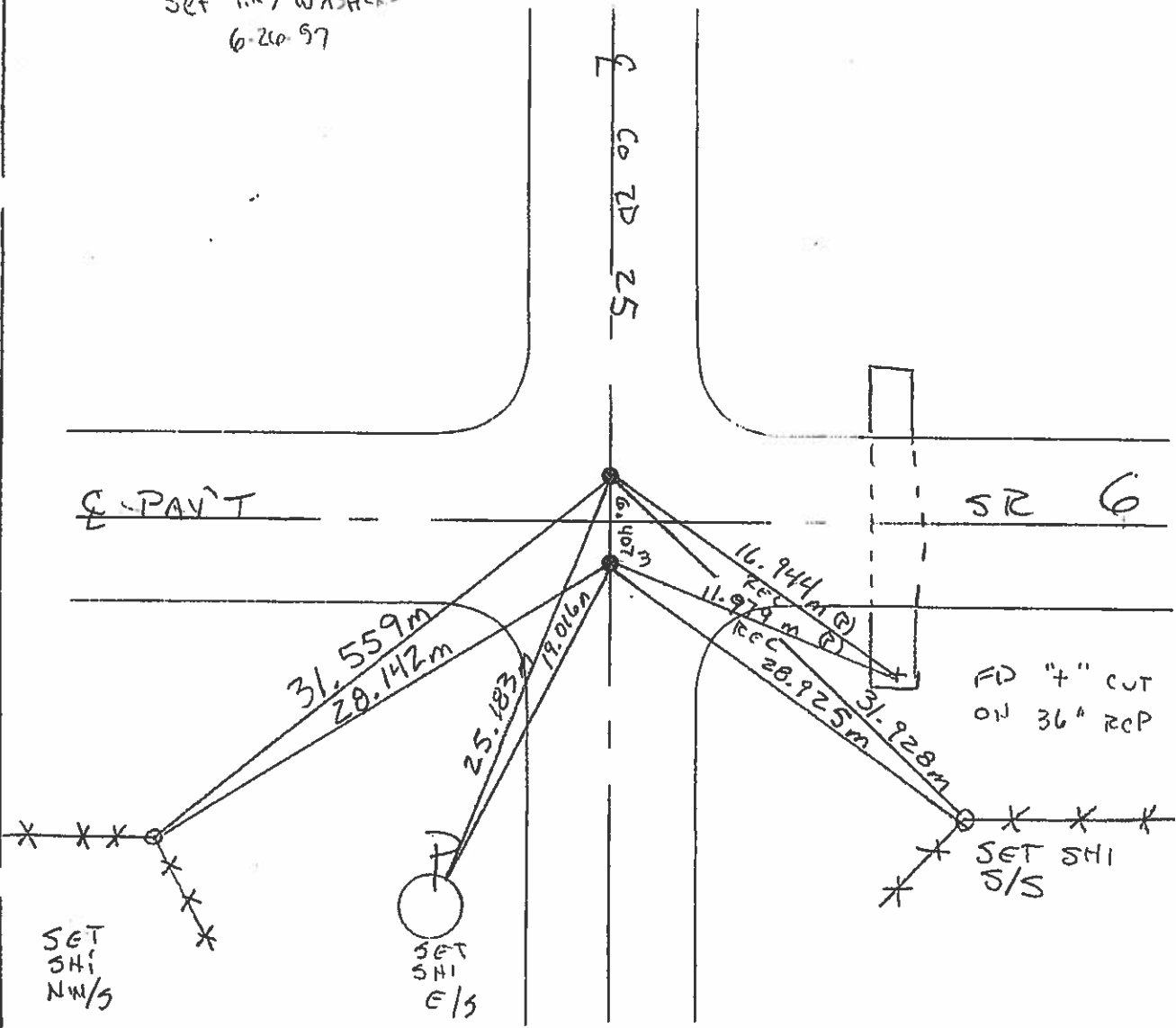
LEFT - ~~sm. RR SPIKES~~ - RIGHT 3.2m ET, 3.2m LT, BOTH POINTS ON E OF CO. RD

— TO — EDGE PAVEMENT

S.L.M. 0+000



Set P.K./WASHERS
6-20-97



O.D.O.T. DISTRICT 2 SURVEY OFFICE

PERSONNEL

REFERENCE NO. 1

SHEET OF

NOTES Hoffman R.C.

H.C. BARNHISEL

R.C.

DATE 5-6-85

WEATHER Cloudy

TEMP. 65°

ROUTE US 6

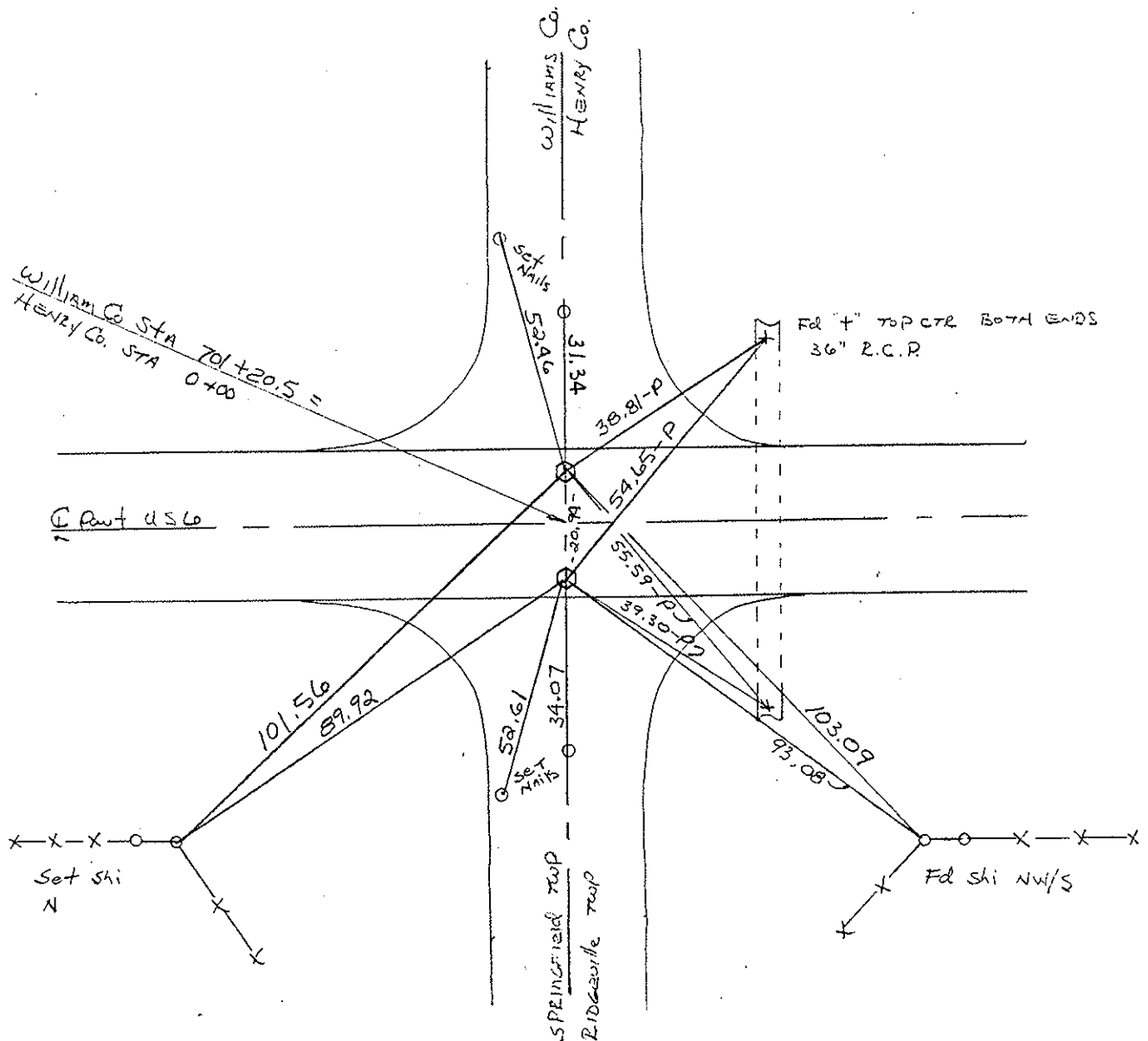
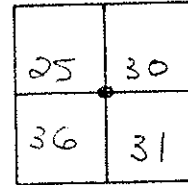
COUNTY HENRY

TOWNSHIP RIDGEVILLE

SECTION 30

T6 N R 5 E

TYPE MONUMENT R.R. SPIKES SET SMALL
 ON SURFACE - BELOW 1 1/2" R.R. SPIKES
 LEFT - C PART - RIGHT 10.5 FT 10.5 FT 6-13-85
 TO EDGE PAVEMENT S.O.N.
 S.L.M. 0+00

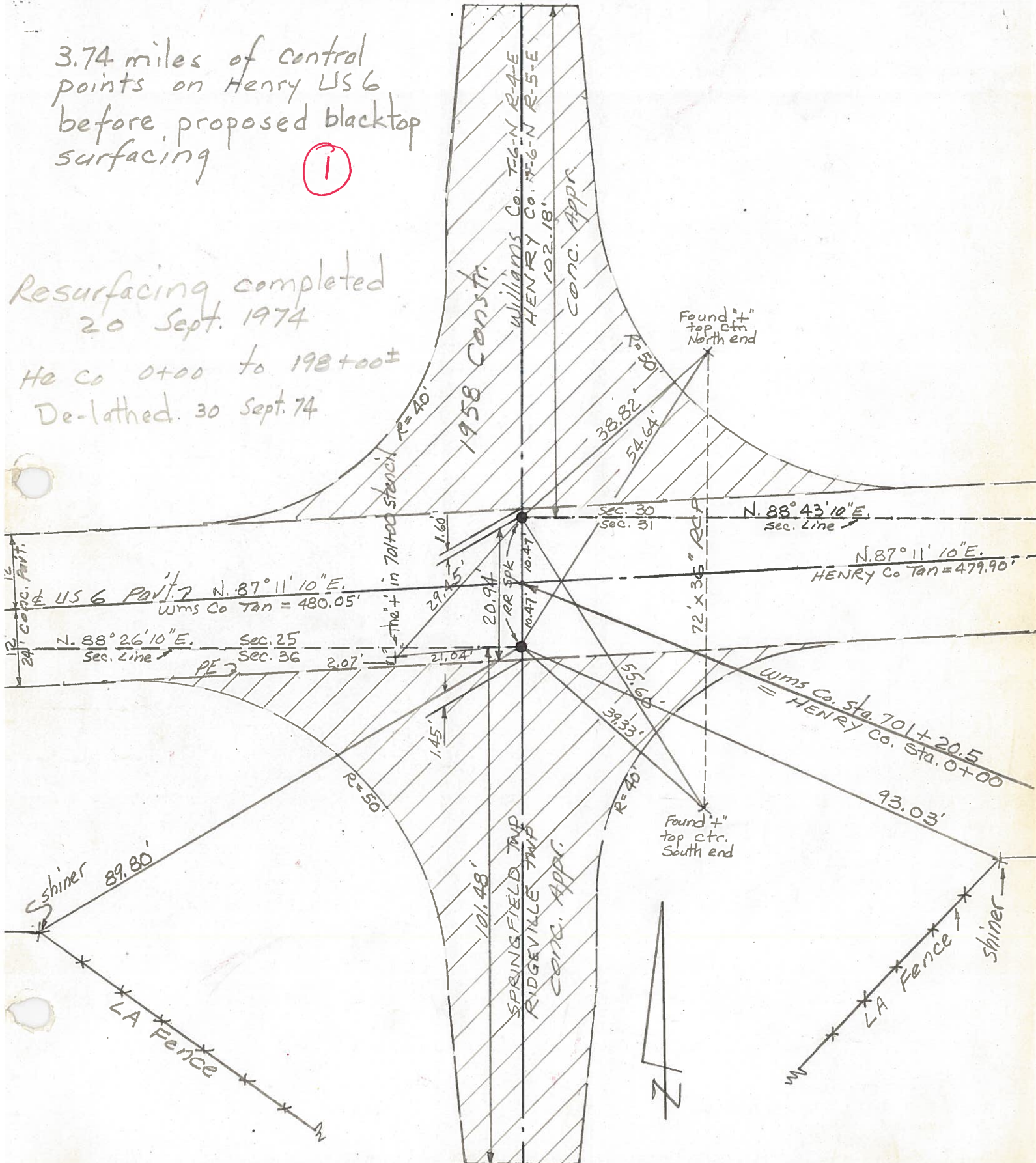


PERSONNEL	TITLE	PERSONNEL	TITLE	COUNTY	DATE	WEATHER	TEMP.
Red Beach				HENRY	5 July 1974		
W. Knappe				US 6			
D. Boyle				Ridgeville Twp.			
J. Bagdonas							

DESCRIPTION CONTROL POINTS JOB NO. _____

3.74 miles of control points on Henry US 6 before proposed blacktop surfacing
 (1)

Resurfacing completed 20 Sept. 1974
 He Co 0+00 to 198+00±
 De-lathed. 30 Sept. 74



PERSONNEL TITLE PERSONNEL TITLE

COUNTY Henry DATE Jan 1951

S. R. #384 WEATHER _____

SEC. _____ TEMP. _____

DESCRIPTION _____ JOB NO. _____

LEFT CENTER LINE RIGHT

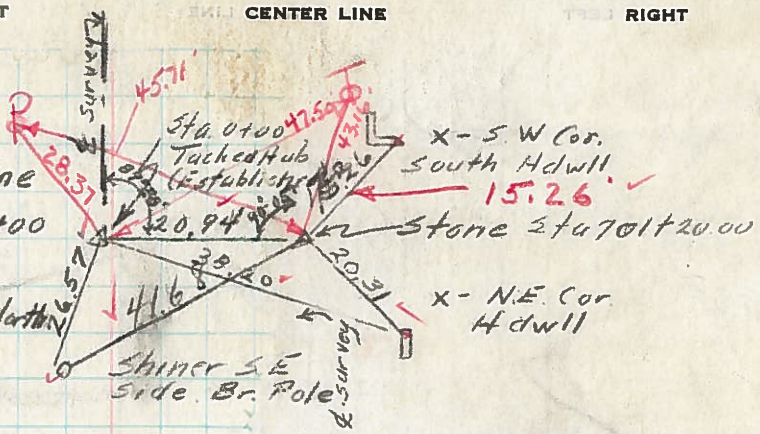
10/9/56

WILLIAMS-HENRY Co Line

Sta 70+20.00 = Sta. 0+00

Found Stone Sta 70+20.00

Established Tacked Hub 20.94 North



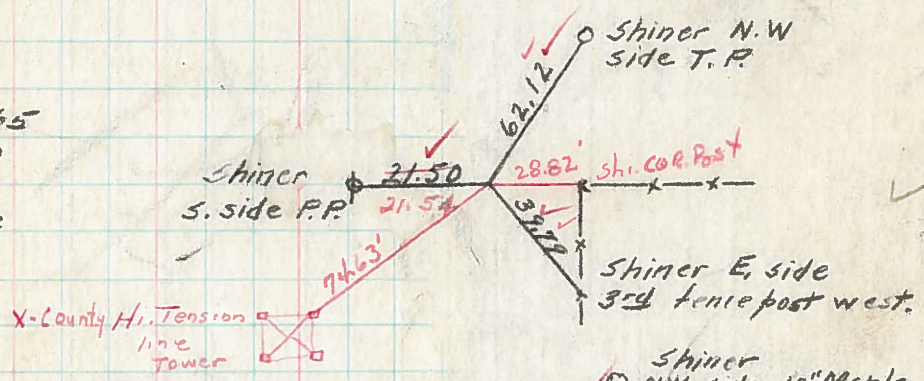
Recorded in
Map book
H.C.

10/9/56

Sta. 19+87.65

L = 0° 00'

Found Stone



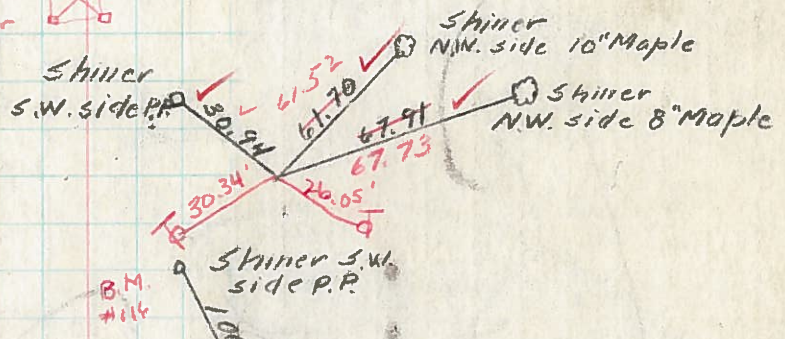
10/9/54

Sta. 46+19.55

L = 0° 10' Lt.

Found I.P. over Stone

S.R. #384 & Twp. Rd #24



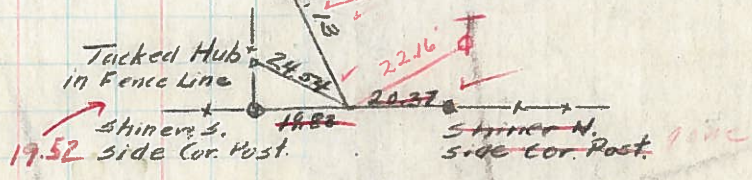
10/9/54

Sta. 72+63.84

L = 0° 08' Lt.

Found Stone

Set R.R. Spk.



10/9/56

Sta. 99+17.62

L = 0° 8' Rt.

Established Tacked Hub

Set R.R. Spk

S.R. #384 & S.R. #66

