

MAINTENANCE PROGRAM 1982

(TOP) TYPE \_\_\_\_\_ THICKNESS 1 1/4" 404 \_\_\_\_\_ 10 PRIORITY PART OF \_\_\_\_\_

(BASE) TYPE \_\_\_\_\_ THICKNESS \_\_\_\_\_ PENETRATION \_\_\_\_\_

END LOG S.L.M. 4.34 ( Intersection 20A (south 300'±) )

BEGIN LOG S.L.M. 0.00 ( Michigan State Line construction joint )

TOTAL LENGTH 4.34

COUNTY Williams SECTION 0.00 WIDTH (22) BERM CURBED ( ) ( )

ROUTE 15 SECTION 0.72 WIDTH (22) ( ) ( )

SECTION 1.03 WIDTH (21) ( ) ( )

ORDINANCE Pioneer SECTION 1.13 WIDTH (24) ( ) ( )

END LOG 2.54 SECTION 1.47 WIDTH (24) parking? ( ) ( )

BEGIN LOG 0.72 SECTION 2.04 WIDTH (22) ( ) ( )

EXISTING BERM TYPE \_\_\_\_\_ EXISTING BERM WIDTH 4.34 end MAILBOX APPROACHES No. 1

(PAVED, STABILIZED, AGGREGATE) MANHOLES 22

PROPOSED BERM TYPE \_\_\_\_\_ PROPOSED BERM WIDTH X INLETS CATCH BASINS 26

INTERSECTIONS 11 1-way / 7 2-way ASPHALT DRIVEWAYS 54 CONCRETE DRIVEWAYS 18

STRUCTURES

STRUCTURE NO.	WIDTH	LENGTH	APPR. SLABS
Wil 15 0111	38.0	86.4	2-14'x22'
Sta 54+94	CONC	Deck 9	APPR. SLABS
Wil 15 0278	ASPHALT	Deck 15	Rough 15' x 14' LAUT
Sta 146+79	31.5	18.0	20' Either side of bridge
Wil 15 0292	40.0	139.5	2x 14 x 24
Sta 154+36	ASPHALT	over	Coak.
Sta 197+50	84" CMP	- Rough	pav't, 24' wide
		Rough pav't - 20'	Either side

RAILROAD CROSSINGS

NAME R. R.	STATION	( ) ( )	No.	TRACKS
		( ) ( )		TRACKS
		( ) ( )		TRACKS
		( ) ( )		TRACKS
		( ) ( )		TRACKS

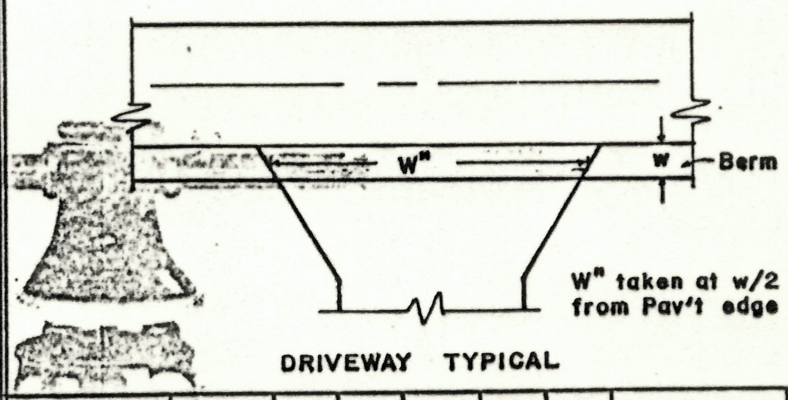
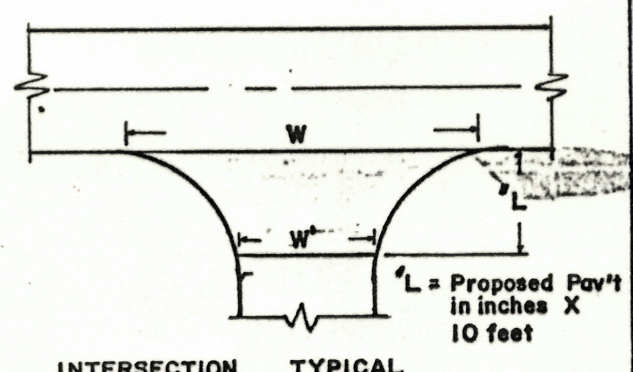
\*Indicate length of crossing along E Pav't.

Cancel Pav't Markers?  
See PAGE 10

NOTES

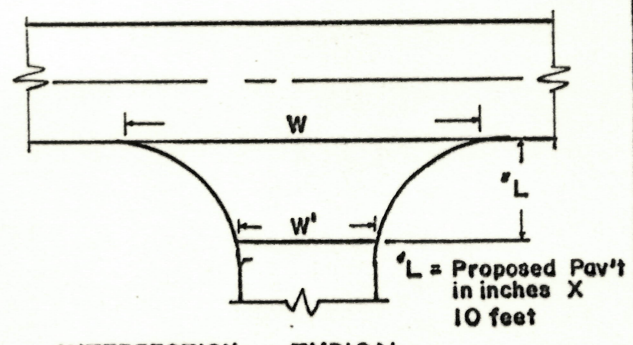
Further each side is 20 ; Const Joint From M-99 Project,  
 @ Sta 0+19 ; @ Sta 37+89 on E. side "B Road" sign "Pioneer  
 Village Limit ENDS" ; Sta 54+40 "Pioneer Corp Sign & AN  
 IRON PIPE in @ 54+31.4 ; @ Sta 76+01, 1' N of EP, there  
 is an old CONG SIGN base 1.6 x 1.6, sticking up ± 0.40 ; should  
 be removed ; @ 13.3+15 1/2 side - "Pioneer Corp Sign"

PERSONNEL TITLE PERSONNEL TITLE COUNTY Williams DATE Oct, 81  
HoFFmax \_\_\_\_\_  
Loehrke \_\_\_\_\_ S. R. 15 WEATHER \_\_\_\_\_  
Householder \_\_\_\_\_ SEC. 0.00 - 4.34 TEMP. \_\_\_\_\_  
 DESCRIPTION 1982 Resurface LEFT CENTER LINE RIGHT JOB NO. \_\_\_\_\_

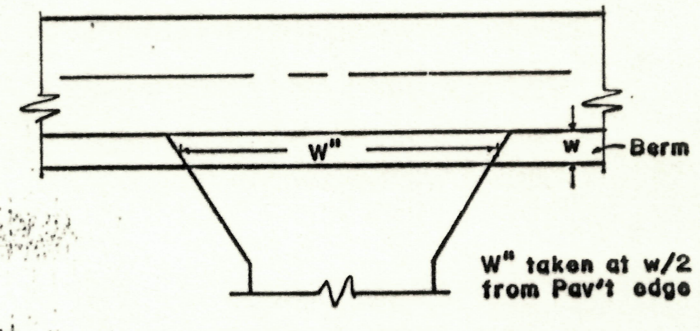


STATION	RT. LT.	L	W	W'	Asph	Conc		STATION	RT. LT.	w	W''	Asph	Conc	Aggr	Dropped Curb Feather NOT Req'd
27+83	RT	15	90	41	✓	Rd. "S"		7+62 9+44	RT	2.0 3.0	41 40	✓			
57+83	LT	15	102	55		INDUST		33+57	LT	2.5	37	✓			
61+38	LT	15	55	25	✓	MICH		37+66	LT	3.0	43	✓			
64+38	RT	15	36	20	✓	"		47+76	RT	3.0	41	✓			
67+39	RT	15	35	20	✓	DEARBORN		49+45	RT	3.0	40	✓			
67+57	LT	15	41	21	✓	ST		50+72	LT	2.0	88		✓		Michigan Production
73+03	RT	15	41	24	✓	North		51+51	LT	2.0	60	✓			Grinding Co.
73+03	LT	15	39	24	✓	AVE		60+21 61+02	RT	2	82	✓			Parking & Produce market
								62+95	LT	2	30	✓			
								62+97	LT	2	28	✓			
								63+11	RT	2	80	✓			15' back - entrance to car wash
								65+12	LT	1	34	✓			limb carry-out
								65+70	LT	0	16	✓			
								65+89	RT	2	18	✓	OVER CONC.		
								66+33	RT	2	19	✓	OVER CONC.		
								66+54	LT	0	17	✓			
								67+65	RT	0	16	✓	OVER CONC.		
								68+72	LT	0	17	✓			
								69+50	LT	0	13	✓	OVER CONC.		
								69+58	RT	2	44	✓			
								70+70	LT	0	34	✓			
								70+89	RT	1	22	✓			
								71+84	LT	0	18	✓	OVER CONC.		

PERSONNEL	TITLE	PERSONNEL	TITLE	COUNTY	DATE
Hoffman				Williams	Oct 81
L				S. R.	15
H				WEATHER	
				SEC.	0.00 - 4.34
				TEMP.	
DESCRIPTION	1982 Resurface			JOB NO.	
	LEFT	CENTER LINE	RIGHT		



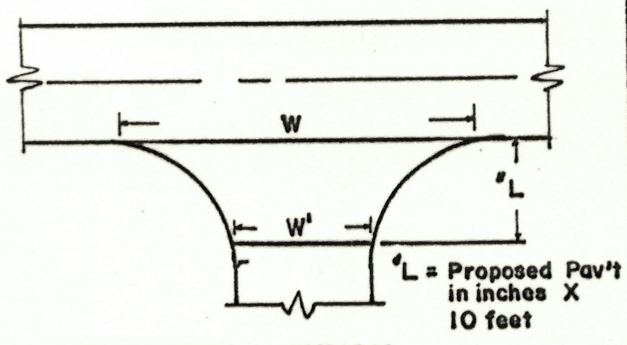
INTERSECTION TYPICAL



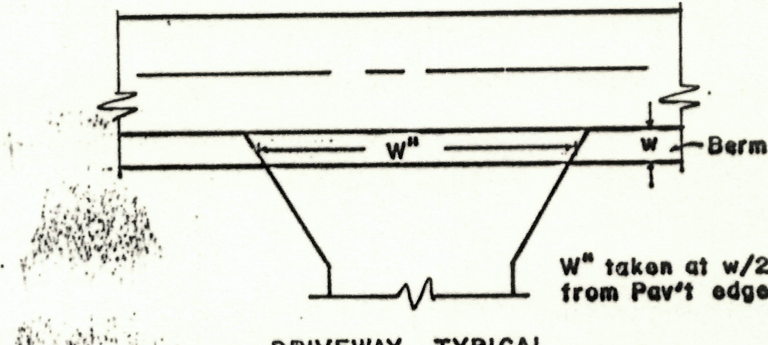
DRIVEWAY TYPICAL

STATION	RT. LT.	L	W	W'	Asph	Conc	STATION	RT. LT.	w	W''	Asph	Conc	Aggr	Dropped Curb Feather NOT Req'd
77+63	LT	15	39	23	✓	MUL BERY ST.	74+40	LT	0	31		✓		
80+85	LT	15	65	49	✓	BRIDGE ST.	74+62	RT	1	23	✓			
81+76	RT	15	58	43	✓	FIRE ST.	75+89	LT	0	14	✓			
83+12	RT	15	17	12	✓	ALLEY	75+89	RT	1	20	✓	OVER CONC		
84+9.5	RT	15	40	23	✓	CHURCH ST.	80+14	RT	0	30		✓		
87+33	LT	15	43	22	✓	LYNN	82+41	LT	0	18		✓		
88+33	RT	15	45	19	✓	ST.	83+73	LT	0	31		✓		Dropped sidewalk
							83+85	RT	0	15		✓		Dropped sidewalk/S
							84+80	LT	0	15	✓	4' back - then CONC		
							84+93	LT	0	16	✓			
							86+12	LT	0	39	✓			
							86+47	RT	1	10		✓		
							86+33	LT	0			✓	Back of walk	N. edge
							86+51	LT				✓	Drive to Village Hall	S. edge
							86+68	LT				✓	Back of walk	N. edge
							87+31	LT				✓	Station Drive	S. edge
							88+33	RT	1	38	✓	✓	Reel-up	
							90+11	LT	0	15	✓			
							90+75	LT	0	20	✓	OVER CONC.		
							90+97	RT	0	12		✓		
							91+49	LT	0	20	✓	OVER CONC		
							91+98	RT	0	11		✓		
							92+92	LT	0	28	✓			
							93+21	RT	0	18	✓			

PERSONNEL Hoffman TITLE \_\_\_\_\_ PERSONNEL \_\_\_\_\_ TITLE \_\_\_\_\_ COUNTY Williams DATE Oct 81  
 S. R. 15 WEATHER \_\_\_\_\_  
 SEC. 0.00-4.34 TEMP. \_\_\_\_\_  
 DESCRIPTION 1982 Regulator LEFT \_\_\_\_\_ CENTER LINE \_\_\_\_\_ RIGHT \_\_\_\_\_ JOB NO. \_\_\_\_\_



INTERSECTION TYPICAL



DRIVEWAY TYPICAL

STATION	RT. LT.	L	W	W'	Asph	Conc		STATION	RT. LT.	w	W''	Asph	Conc	Aggr	Dropped Curb Feather NOT Req'd
17150	RT	15	47	23	✓	MI	LL	95+48	RT	0	24		✓		
17150	L	15	44	23	✓		ST.	95+63	LT	0	72	✓			schio state name
104+27	LT	15	55	27	✓	Pioneer	MI	96+47	RT	0	23	✓	over	C	ONC
102+99	RT	15	34	20	✓	HAN	ES	98+05	RT	0	17	✓	over	C	ONC.
119+51	LT	15	82	40	✓	mobl	Home	98+74	LT	0	28		✓		
186+88	LT	15	82	38	✓	rd	"P"	99+27	LT	0	27	✓			
								99+79	LT	0	32	✓			
								101+14	RT	0	19		✓		
								102+69	RT	0	23		✓		
								104+91	LT	0	27		✓		
								105+37	LT	0	24	✓			
								106+33	RT	0	20		✓		
								107+07	LT	0	21		✓		
								108+54	RT	2	29	✓			
								109+81	RT	2	34	✓			
								120+75	RT	2.5	84	✓			
								122+26	LT	3	30	✓			
								123+66	LT	3	37	✓			
								134+91	RT	3	34	✓			
								168+10	LT	3	46	✓			
								176+24	RT	3	45	✓			
								186+88	RT	3	41	✓			
								187+35	RT	3	40	✓			m. box
								192+11	LT	3	42	✓			



PERSONNEL TITLE PERSONNEL TITLE COUNTY Williams DATE Oct 81  
Hoffman \_\_\_\_\_  
L \_\_\_\_\_ S. R. 15 WEATHER \_\_\_\_\_  
H \_\_\_\_\_ SEC. 0.00 - 4.34 TEMP. \_\_\_\_\_  
 DESCRIPTION 1982 Resurface JOB NO. \_\_\_\_\_  
 LEFT CENTER LINE RIGHT

STATION	OUT	CB	TYPE	MH	TYPE San. Storm	MONU	TYPE Box Other	WV	CASTING		Remarks
									Raise	Feather	
57+61	Lt of 21'			✓	SAN				✓		IN INDUSTRIAL DRIVE
61+36	RT	✓	7000	✓					✓		East Jordan / 5' of curb
61+36	Lt	✓	7000	✓					✓		Neenah / 5' of curb
64+44	Lt of 5'			✓	SAN				✓		
64+62	Lt	✓	7000						✓		East Jordan / 5' of curb
64+61	RT	✓	7000						✓		East Jordan / 5' of curb
65+36	Lt of 15'			✓	SAN - has a double lid				✓		@ edge of drive (65+12) f' Edge of RAUT
67+44	Lt			✓	SAN				✓		
67+50	Lt			✓	SAN				✓		
67+80	Lt	✓	7000						✓		Neenah / 5' of curb
67+71	RT	✓	6								No curb 2' □
69+87	RT of 3'			✓	SAN				✓		
71+61	Lt of 4'			✓	SAN				✓		
72+33	Lt				SAN				✓		
72+74	RT	✓	7000						✓		Neenah - no curb
72+74	Lt	✓	7000						✓		Neenah / 5' curb
75+88	Lt of 3'			✓	SAN				✓		
77+38	Lt	✓	7000						✓		East Jordan / 5' curb
77+38	RT	✓	6						✓		No curb 2.0x1.5
78+82	RT of 17'			✓	storm				✓		
80+02	Lt			✓	SAN				✓		
80+60	Lt of 31'	✓	6						✓		1.8x2.5
80+60	Lt of 21'			✓	storm				✓		
80+78	Lt			✓	SAN				✓		
80+88	RT	✓	6						✓		in curb
81+00	Lt			✓	SAN				✓		
81+02	Lt of 28'	✓	6								2.5x1.8
83+20	Lt of 3'			✓	SAN				✓		
84+57	Lt	✓	6						✓		1.8x1.8 17.5' Lt of 6
84+57	RT	✓	6						✓		1.8x1.8 17.5' RT of 6
84+84	Lt of 2'			✓	SAN				✓		
85+24	RT	✓	6						✓		2.0x1.8

PERSONNEL TITLE PERSONNEL TITLE

COUNTY Williams DATE October 81

Hoffman

S. R. 15 WEATHER

L

SEC. 0.00-434 TEMP.

H

DESCRIPTION 1982 Resurfacing JOB NO.

LEFT CENTER LINE RIGHT

STATION	OUT Rt-Lt	CB	TYPE 1,2,3	MH	TYPE San. Storm	MONU	TYPE Box Other	WV	CASTING		Remarks
									Raise	Feather	
85+50	Lt	✓	1A'	✓	storm				✓		
87+14	Lt	✓	2'	✓	SAN				✓		
89+06	Lt	✓	6						✓		no curb
89+06	Rt	✓	7000						✓		Need 1/5' curb
89+29	Lt	✓	5'	✓	storm				✓		
89+38	Lt	✓	18'	✓	SAN				✓		
89+55	Lt	✓	7000 TIP 2 BACK						✓		5' of curb
89+55	Rt	✓	7000						✓		Need 1/5' curb
89+47	Rt	✓	15'				GAS VALVE		✓		
93+70	Lt	✓	7'	✓	SAN				✓		
94+32	Rt	✓	19'				GAS VALVE			✓	
101+77	Lt	✓	7000							✓	Need 1/5' of curb
111+77	Rt	✓	7000							✓	Need 1/4 curb
117+77	Rt	✓	2'	✓	SAN				✓		
121+72	Lt	✓	7000							✓	Need 1/5' of curb
121+72	Rt	✓	6						✓		3' D
131+91	Lt	✓	3-A							✓	
133+72	Rt			✓	storm				✓		
133+77	Lt	✓	3-A							✓	clean out - plugged solid

PERSONNEL Hoffman TITLE \_\_\_\_\_ PERSONNEL \_\_\_\_\_ TITLE \_\_\_\_\_ COUNTY Williams DATE Oct 81  
 \_\_\_\_\_ S. R. 15 WEATHER \_\_\_\_\_  
 \_\_\_\_\_ SEC. 000-434 TEMP. \_\_\_\_\_

DESCRIPTION 1982 Resurface LEFT \_\_\_\_\_ CENTER LINE \_\_\_\_\_ RIGHT \_\_\_\_\_ JOB NO. \_\_\_\_\_

STA	PAV+ WIDTH	Berm
0+00	23.0	Lt. 3.0 paved ; Rt. 3.8 paved
0+20	22.5	Lt. 2.0 stab ; Rt. 2.0 stab
27+0	22.3	Lt. 2.5 stab ; Rt. 2.5 stab
38+0	22.0	Lt. 3.0 stab ; Rt. 2.5 stab
54+0	22.5	Lt. 2.0 stab ; Rt. 2.5 stab
54+26		Lt. 2.0 stab ; Rt. 2.0 stone
62+0	22.4	Lt. & Rt. Variable - stone, stab, paved 0'-2'
64+62 ±	old sandstone surface of	curb begins. PAV ± 2" it is below
68+0	24.0	Lt. No Berm ; Rt. old curb - 1' stone berm
67+0	24.5	" " " "
66+0	25.0	" " " "
65+0	25.0	" " " "
64+0	24.7	Lt 2' stone ; Rt 2' stone
63+0	23.7	" " " "
75+0	24.4	Lt. 0' Berm - Rt old curb - stone
77+40	50.0	Lt. Feather to gas sta ; Rt. to face of walk/curb
79+02	47.0	Lt. to face of <sup>begin</sup> walk/curb ; Rt. E.P. No curb
		WALK IS below E.P. STA 78+57 TO 79+65
81+5	48.0	curb to curb
84+0	48.7	" TO "
84+80		END WALK
84+72		Rt. SIDE Lt. "
85+20 (After Church st & drive 84+93)	41.0	Lt & Rt - no berm or curb or walk
85+92	34.0	Lt - drive ; Rt variable 0-2' stone
86+33	34.0	Lt - begin walk/curb
87+0	34.5	Lt. walk ; Rt stone - variable
88+06	34.8	END WALK Lt. SIDE - Rt stone variable
1 m.m.	STA 53+51	NOTE: IN VILLAGE, the old curb was covered in various places when the street was repaved after sewer coat st. Hence the confusion
2 m.m.	" 105+66	
3 m.m.	" 158+43	
4 m.m.	" 204+86	

PERSONNEL TITLE PERSONNEL TITLE COUNTY Williams DATE Oct 81  
H. F. Neal \_\_\_\_\_  
L \_\_\_\_\_ S. R. 15 WEATHER \_\_\_\_\_  
H \_\_\_\_\_ SEC. 0.00 - 4.34 TEMP. \_\_\_\_\_

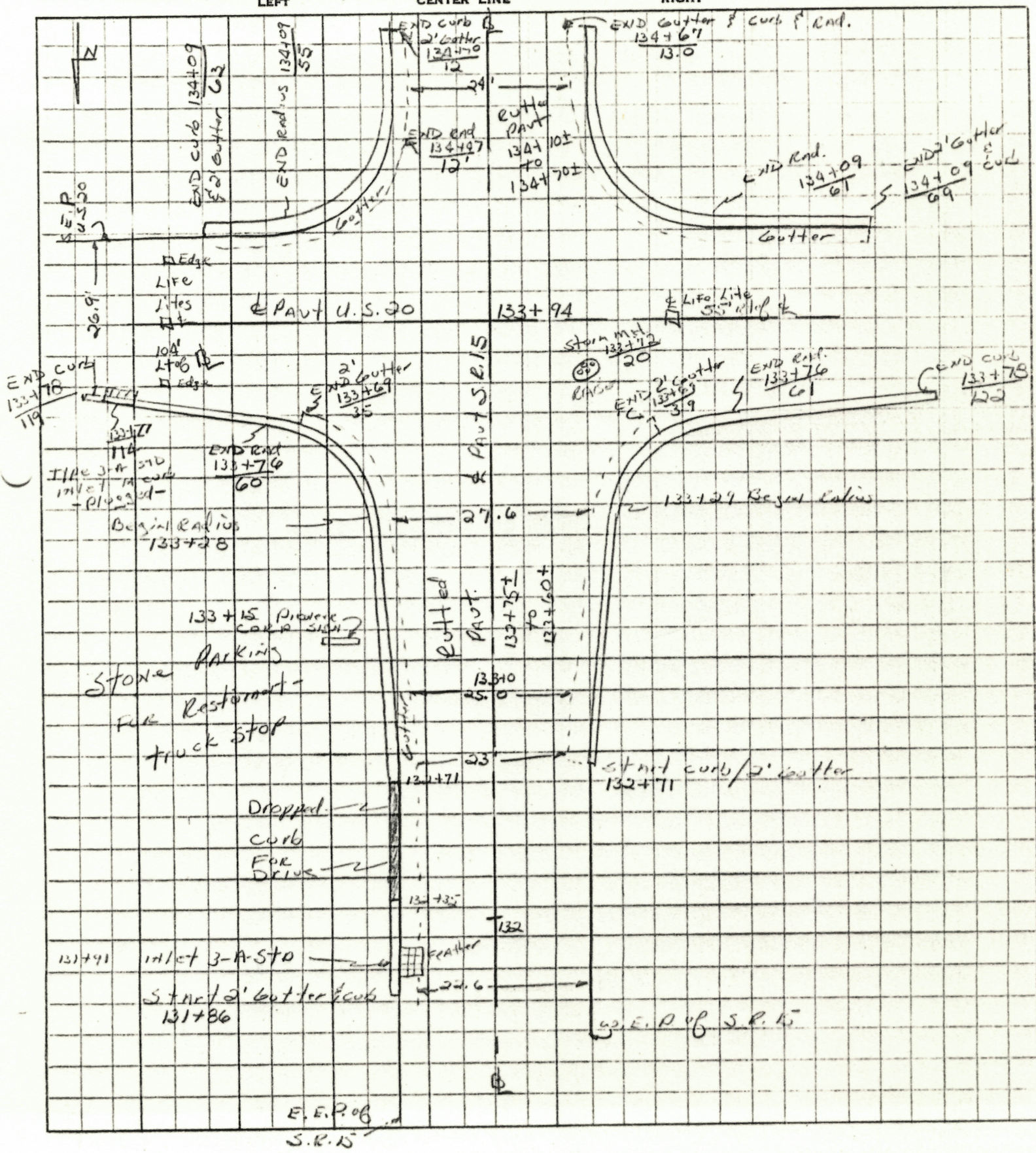
DESCRIPTION 1982 Resurfaced JOB NO. \_\_\_\_\_

	LEFT	CENTER LINE	RIGHT
Sta	PAVT width		Berm
88+07	25.0		Lt 0 Rt stake - variable
90+21	24.7		Lt, basal curb, 1" above pvt; Rt variable
91+39	24.7		Lt, end curb
92+0	25.0		Lt & Rt variable 0-1'
93+89	24.0		Lt variable; Rt curb is visible again, flush with pvt
95+37	24.4		Lt curb is visible, Rt it is not discernible 100 ±
99+0	24.6		Lt, curb visible; Rt no sign of curb 1" above pvt
100+00	24.6		Lt, curb ends, Rt, " " "
103+0	24.6		Lt, curb visible for 30', 1/2" below pvt Rt, no sign of curb, no berm
106+0	24.4		Lt, no curb or berm visible Rt, curb visible, flush for below pvt 1"
107+40	24.5		Lt, same as 106, Rt, curb ends
107+50	22.4		Lt & Rt, 2' to 2 1/2' slab
118+0	22.5		" " " " "
125+0	22.0		Lt 2.5' slab, Rt 3' slab
136+0	24.0		Lt & Rt 3' slab
158+0	24.0		" " " " "
176+0	24.0		" " " " "
210+0	24.0		" " " " "
232+0	24.0		" " " " "
		No const.	joint visible

PERSONNEL	TITLE	PERSONNEL	TITLE
Haffman			
L			
U			

COUNTY Williams DATE 10-14-81  
 S. R. 15 WEATHER cloudy  
 SEC. 0.00-4.34 TEMP. +60°

DESCRIPTION 1982 Resurfacing - Intersection S.R. 15 & U.S. 20 JOB NO. \_\_\_\_\_



E.E.P.O.B.  
S.R. 15

PERSONNEL TITLE PERSONNEL TITLE

Hoffard \_\_\_\_\_

L \_\_\_\_\_

H \_\_\_\_\_

COUNTY Williams

DATE Oct 15, 41

S. R. 15

WEATHER Fair

SEC. 0.00-4.74

TEMP. +58°

DESCRIPTION 1982 Regulars Intersected 15, 20-A & Rd "0"

JOB NO.

