

LOCATION PLAN

WILLIAMS COUNTY, ROUTE-15, (0.00) (2.03) DEPARTMENT OF HIGHWAYS STATE OF OHIO

I hereby certify this to be a true and correct plotting of the center line of survey as determined by the Department of Highways.

Date 10/18-56 George H. Huber
Division Engineer

Received 10-31-56
Recorded 10-31-56
Plat Book 6 Page 15 & 16
Signed \$2.00
Fee

Signed _____
Date MADISON TWP
T.9S. R.2N.
WILLIAMS CO.

0 100 200 300 400
1956
Packet 3
Folder 4

MADISON TWP
T.9S. R.2N.
WILLIAMS CO.

MADISON TWP
T.9S. R.2N.
WILLIAMS CO.

MADISON TWP
T.9S. R.2N.
WILLIAMS CO.

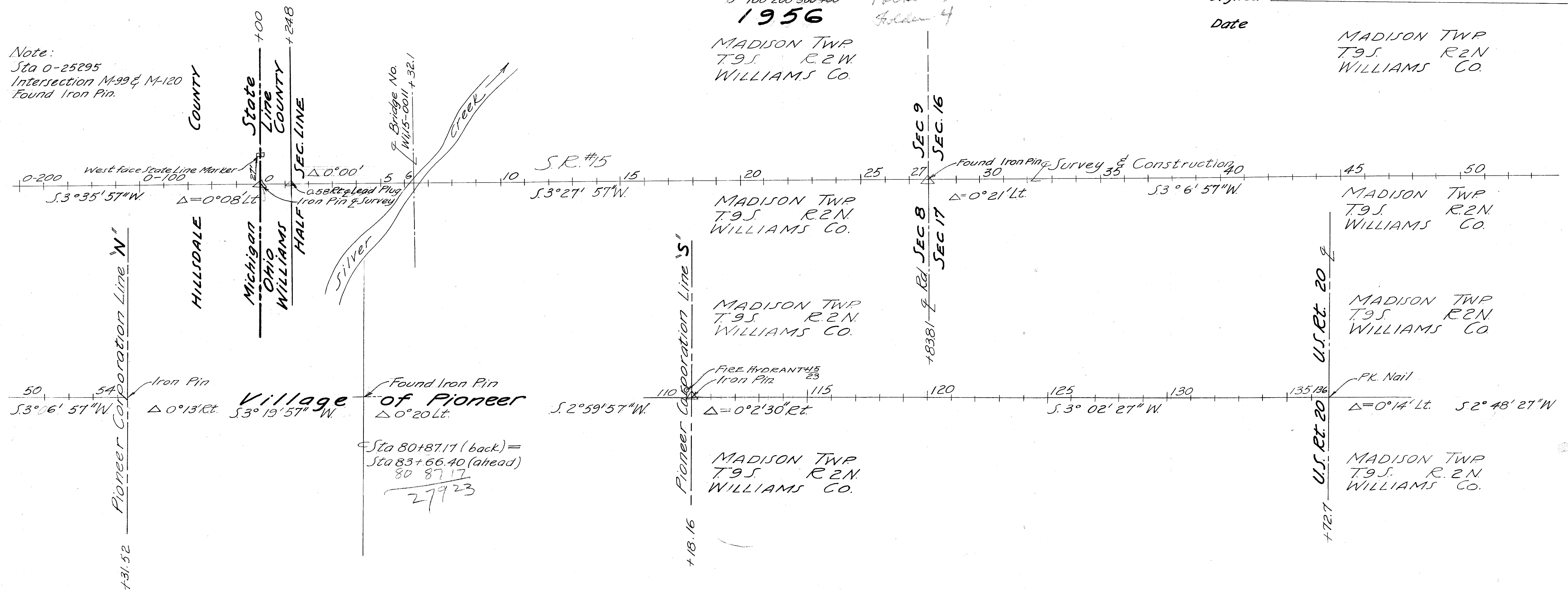
MADISON TWP
T.9S. R.2N.
WILLIAMS CO.

MADISON TWP
T.9S. R.2N.
WILLIAMS CO.

MADISON TWP
T.9S. R.2N.
WILLIAMS CO.

MADISON TWP
T.9S. R.2N.
WILLIAMS CO.

Note:
Sta 0-25295
Intersection M-99 & M-120
Found Iron Pin.



Proposed Center Line Reference Monuments will be set During, or After, Construction.

R/W-1	Bridge Forward	14+57.5	27+83.81	R/W-2	34+47	Oppos. drive Division of Parcels	Oppos. P/L	R/W-3	Oppos. P/L	P/L	Oppos. fence	
	mon.	21+20.655	P/L & Sec Line		Oppos. P/L fence	Oppos. P/L	Oppos. P/L		Oppos. P/L	Oppos. P/L	Oppos. P/L	Oppos. P/L
	5+00	10+00			37+68	41+26 Lt.	45+00 Lt.	49+36.52 Lt.	116+81 Lt.	113+43 Lt.	128+29 Lt.	133+60 Lt.

Within Three Feet inside of Right of Way Lines.

R 7015 #1
A-50

Scanned
July 1997

WILLIAMS COUNTY
WIL-15-(0.00)(2.03)
NUMBER OF OWNERS 18

FED. RD. DIVISION	STATE	PROJECT	TYPE FUNDS
2	OHIO		

34
37

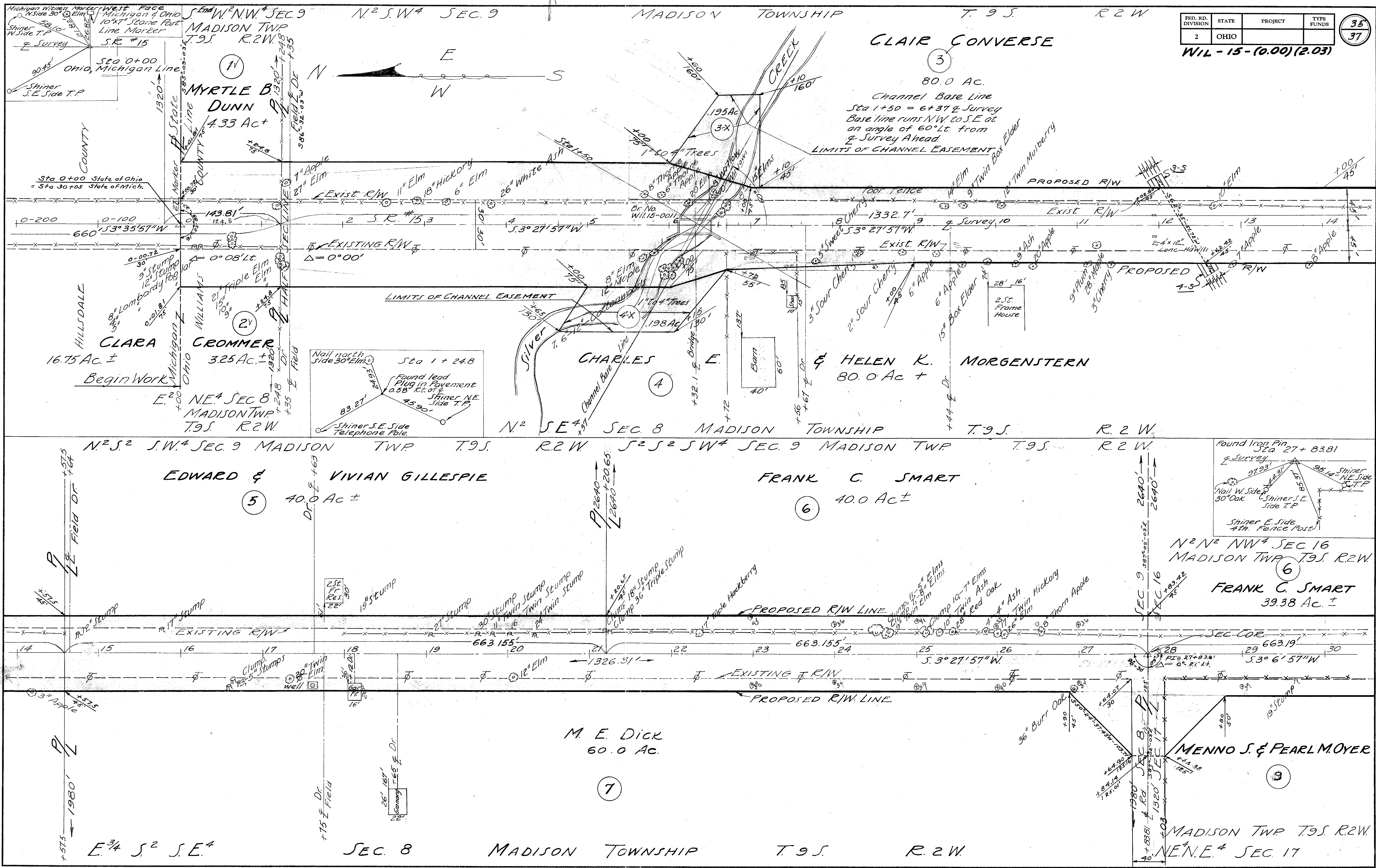
WILLIAMS COUNTY
WIL-15-(0.00)(2.03)
R/W PLANS

PARCEL No.	OWNER	ARE A	BLOG	SHEET No.	REMARKS
1	MYRTLE B. DUNN	0.128		35	
2	CLARA CROMMER	0.123		35	
3	CLAIR CONVERSE	0.821		35	
3-X	"	0.195		35	CHANNEL CHANGE
3-S	"			35	SEWER EASEMENT
4	CHARLES E. & HELEN K. MORGENSTERN	0.837		35	
4-X	"	0.207		35	CHANNEL CHANGE
4-S	"			35	SEWER EASEMENT
5	EDWARD & VIVIAN GILLESPIE	0.228		35	
6	FRANK C. SMART	0.400		35/36	
6-A	THEODORE A. SMART	0.057		36	
7	M. E. DICK	0.518	YES	35	GARAGE & WELL
8	IVA M. FINCKLEY	0.114		36	
9	MENNO S. & PEARL M. OYER	0.892		35/36	
10	MENNO S. OYER	0.472		36	
11	JAMES & DONALEE HESS	0.114		36	
12	PAULINE & LORIN A. FOCKLER	0.243		37	
13	EDNA M. HILL	0.217		37	
14	ELLSWORTH & MARCIA MASTERS	0.415		37	
15	CARMA C. WEBER	0.355		37	
16	LEROY D. UMSTED	0.522		37	
17	MAX D. & DONNA VEE BRANDEBERRY	0.070		37	

FED. RD. DIVISION	STATE	PROJECT	TYPE FUNDS
2	OHIO		

35
37

WIL - 15 - (0.00) (2.03)



CLAIR CONVERSE

80.0 Ac.

Channel Base Line
Sta 1+50 = 6+37 & Survey
Base line runs N.W. to S.E. at
an angle of 60° Lt. from
& Survey Ahead

LIMITS OF CHANNEL EASEMENT

PROPOSED R/W

PROPOSED R/W

LIMITS OF CHANNEL EASEMENT

CHARLES E. & HELEN K. MORGENSTERN

80.0 Ac ±

MYRTLE B. DUNN
4.33 Ac ±

CLARA CROMMER
16.75 Ac ±

NE 1/4 SEC 8
MADISON TWP
T9S. R2W

EDWARD & VIVIAN GILLESPIE
40.0 Ac ±

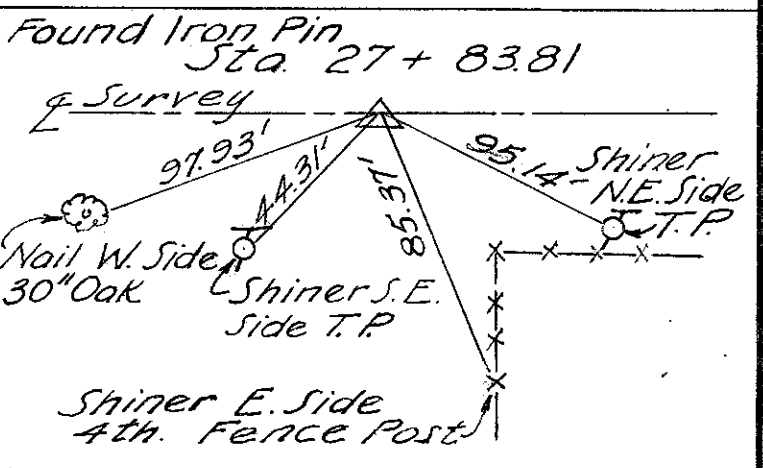
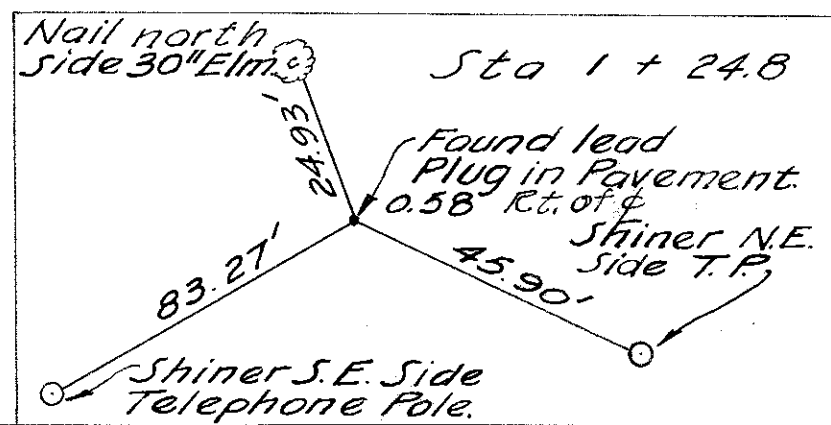
FRANK C. SMART
40.0 Ac ±

M. E. DICK
60.0 Ac.

MENNO S. & PEARL M. OYER

MADISON TWP T9S R2W
NE 1/4 SEC 17

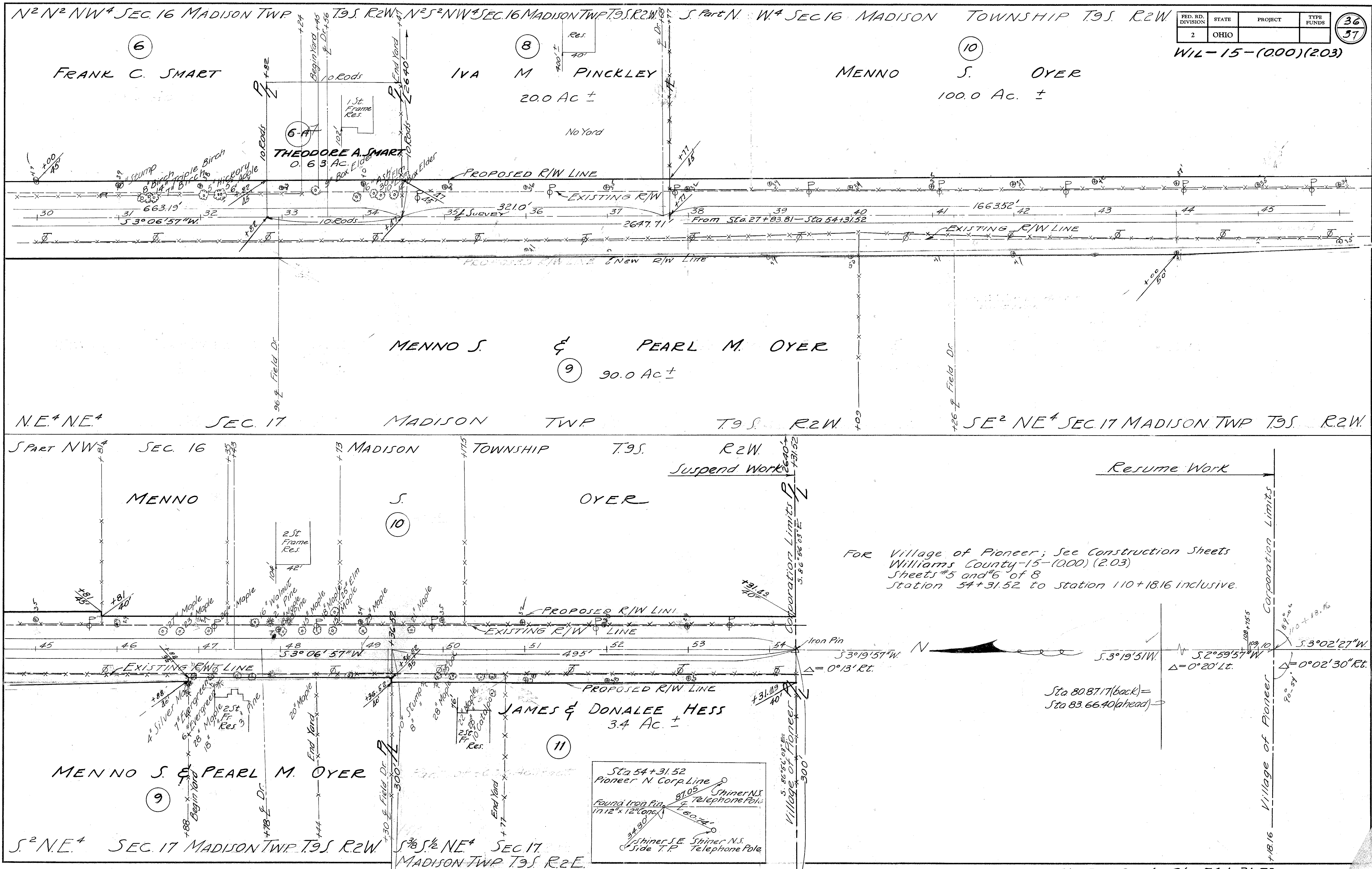
RIGHT OF WAY Sta. 0+00 to Sta 30+00



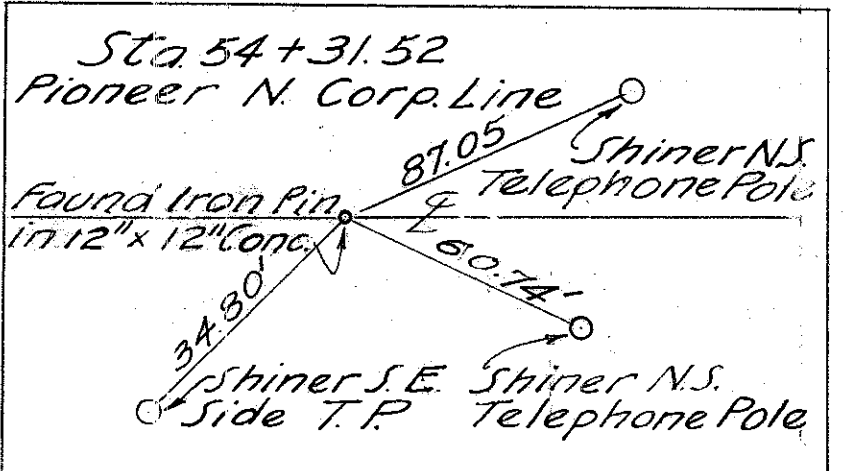
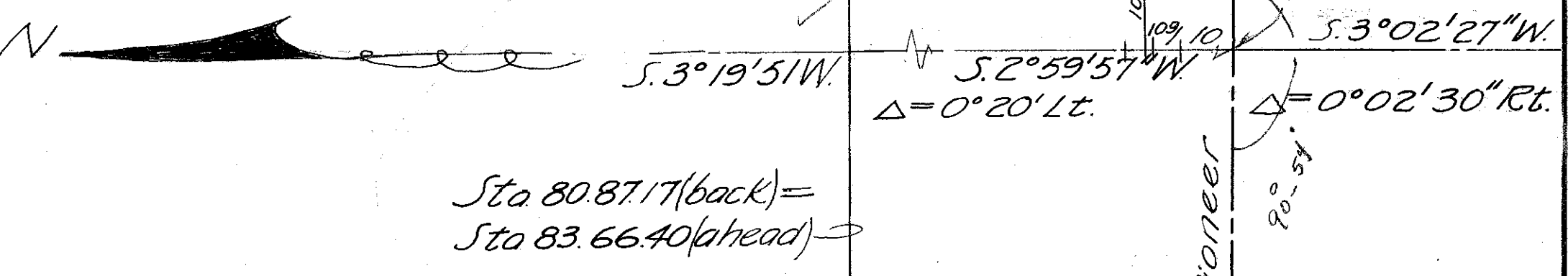
FED. RD. DIVISION	STATE	PROJECT	TYPE FUNDS
2	OHIO		

36
57

WIL-15-(000)(2.03)



FOR Village of Pioneer; See Construction Sheets
Williams County-15-(000)(2.03)
Sheets #5 and #6 of 8
Station 54+31.52 to Station 110+18.16 inclusive.

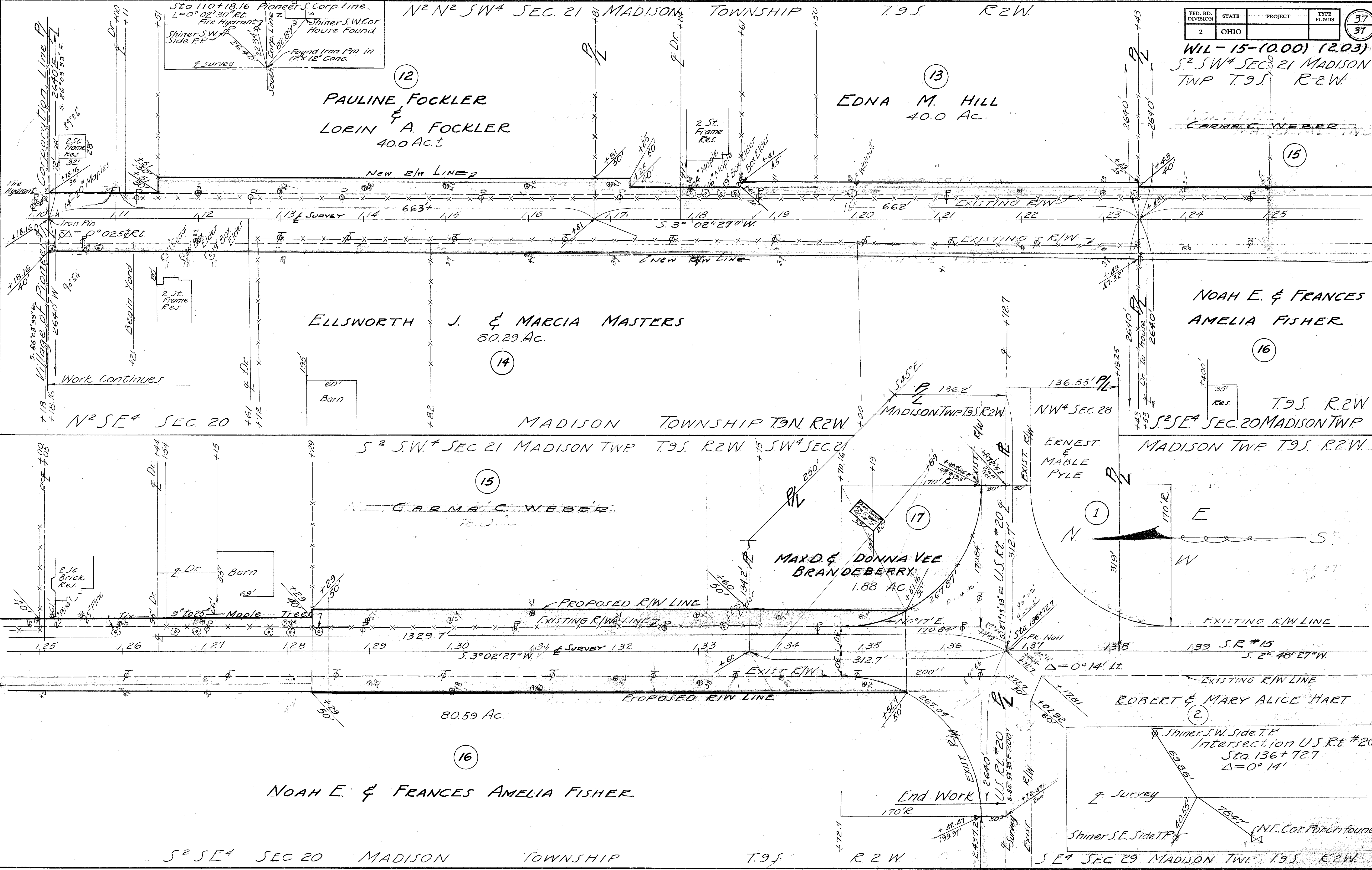


RIGHT OF WAY Sta 30+00 to Sta 54+31.52

FED. RD. DIVISION	STATE	PROJECT	TYPE FUNDS
2	OHIO		

37
37

WIL-15-(0.00) (2.03)
S² SW⁴ SEC 21 MADISON
TWP T.9S R.2W



Sta 110+18.16 Pioneer S. Corp. Line.
L=0° 02' 30" Rt.
Fire Hydrant
Shiner S.W. Side R.P.
Found Iron Pin in 12" 12" Cong.Shiner S.W. Corp. Line
Shiner S.W. Corp. House Found

12
PAULINE FOCKLER
&
LORIN A. FOCKLER
40.0 Ac.

13
EDNA M. HILL
40.0 Ac.

14
ELLSWORTH J. & MARCIA MASTERS
80.29 Ac.

16
NOAH E. & FRANCES
AMELIA FISHER

17
MAX & DONNA VEE
BRANDBERRY
1.88 AC.

16
NOAH E. & FRANCES AMELIA FISHER.

2
ROBERT & MARY ALICE HART

Shiner S.W. Side T.P.
Intersection U.S. Rt. #20
Sta 136+72.7
Δ=0° 14'

Shiner S.E. Side T.P.
(N.E. Cor. Porch found)

S E⁴ SEC 29 MADISON TWP T.9S. R.2W.

RIGHT OF Way Sta 110+18.16 to Sta 136+72.7