

QUANTITIES					
No.	Item	Location & Remarks	Unit	Estimated Quantity	Final Quantity
ROADWAY					
E-1	Rdwy. Exc.		CY	14,271	14,730
L-3	Placing Stock Piled Topsoil		SY	14,800	14,953
E-4	Borrow		CY		1817
L-9	Seed & Protect Type A		SY	14,800	14,953
L-9	Comm. Fert 10-6-4		Ton	1.4	1.24
L-19	Sp. Seeding		SY	23,839	24,916
I-15	Guard Rail Type A		L.F.	300	300
I-23	R/W Fence Type 2		L.F.	4,300	4,245
I-26	Perm. Mon.		Eq	2	2
DRAINAGE					
I-2	15" R.C.C.P. (b)		L.F.	284	282.4
I-2	54" R.C.S.P. (a)		L.F.	160	162.4
I-8	Inlets, Type A		Eq	3	3
S-1	Conc. for Str. Class C		CY	25	18.66
S-4	Reinf. Steel		Lb.	1225	1598.9
I-30	8" Pipe Outlet For Tile Drains		L.F.	20	60
E-2	Str. Exc. Cl. "A"		CY		35.3
I-30	10" Pipe Outlet		L.F.		20
PAVEMENT					
I-22	Sel. Subbase		CY	6,804	6,700.5
F-33	Bit. Mac. Surf. Course		SY	10,435	10,498
F-71	10" Reinf. Conc. Pav't		SY	15,134	15,266.7

2 As-Built Plans
 7 Added 8" Pipe Outlet 697+20 R/W
 " Added Bearing of Turnpike & Changed Angle at SR 15 Added

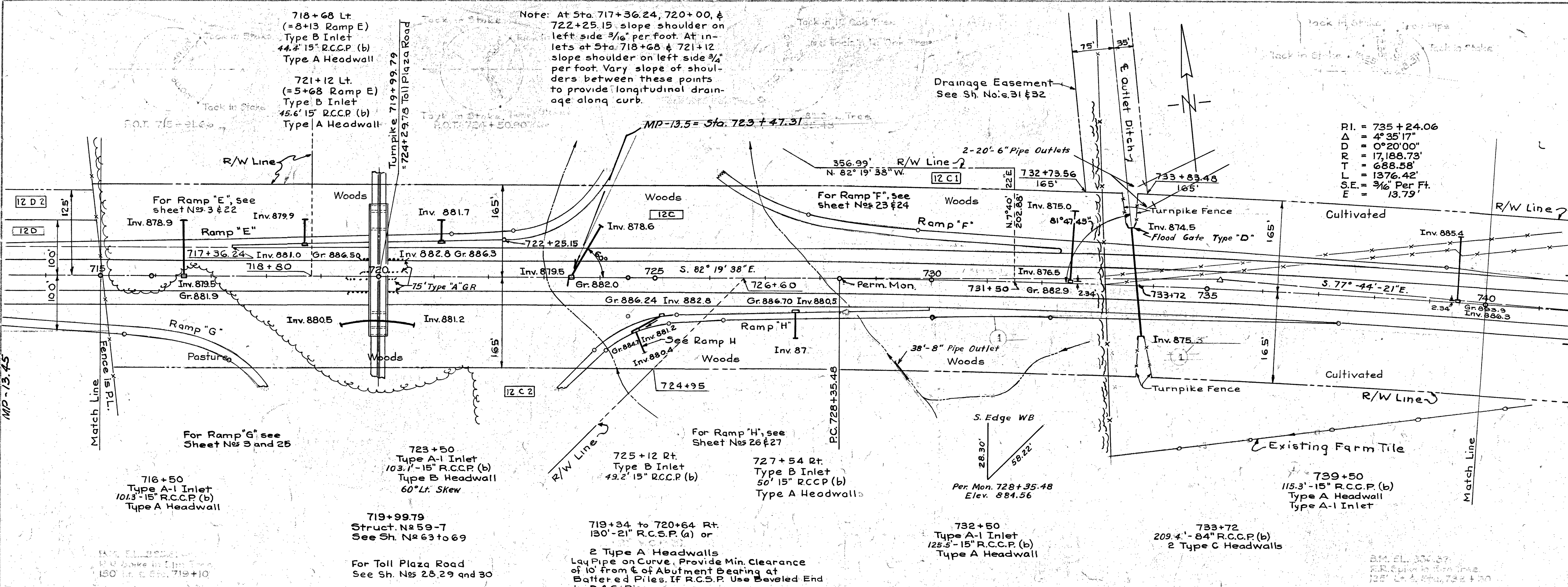
No.	Revision	By	Date
1			
2			

OHIO TURNPIKE COMMISSION
OHIO TURNPIKE PROJECT NO. 1
PLAN AND PROFILE
 WILLIAMS COUNTY
STA. 689+00 TO STA. 715+00
 CONSOER, TOWNSEND & ASSOCIATES
 CONTRACTING ENGINEER
 DESIGN SECTION D-20

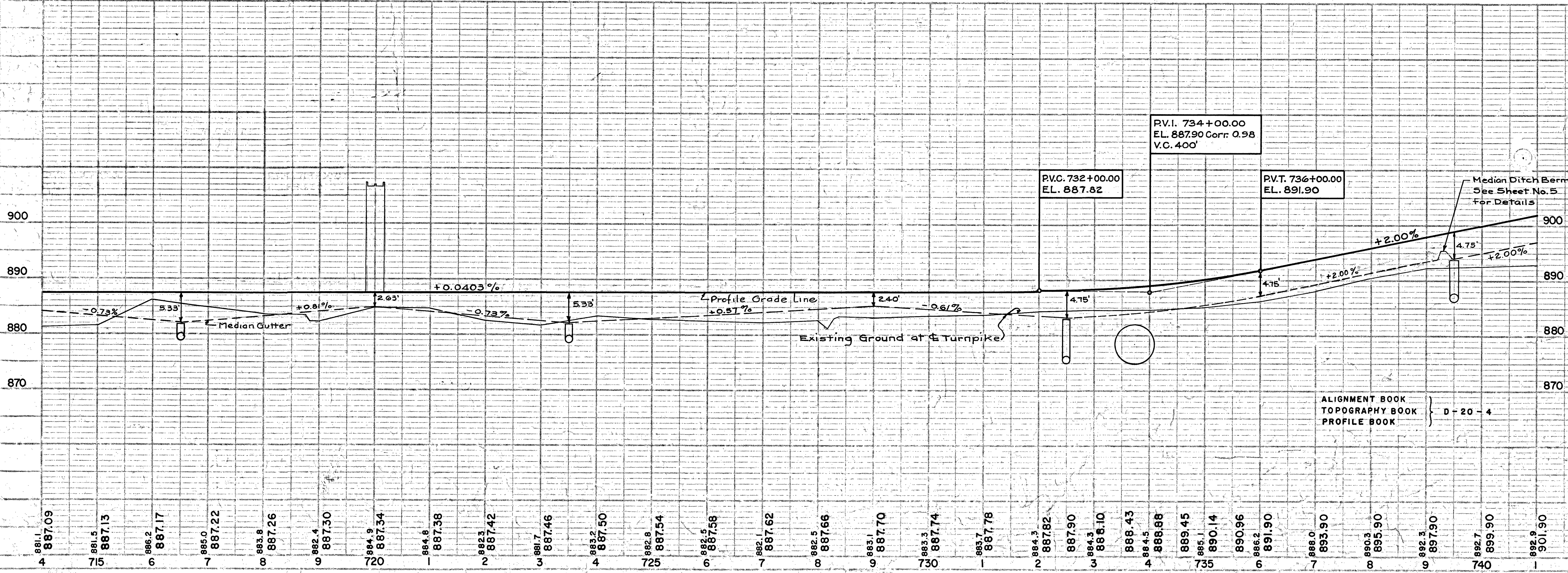
DESIGNED: E.G. & R.L.M. CHECKED: E.A.H. DATE: April 27, 1983
 DRAWN: D.W.T./R.A.C. IN CHARGE: R.A.S. SCALE: 1" = 40' Vert. 1" = 40' Hor.

CONTRACT NO. C-59 SHEET 3 OF 84

PLAN	SUBMITTED	DATE
PROFILE	NOT REVISION	
NOTE BOOK	FLIGHT	
NOTE BOOK	ALIGNMENT CHECKED	
NOTE BOOK	REV. OF PLAN CHECKED	



QUANTITIES					
No.	Item	Location & Remarks	Unit	Estimated Quantity	Final Quantity
ROADWAY					
E-1	Rdwy. Exc.		C.Y.	27,017	26,191
E-4	Borrow		C.Y.	2,074	2,074
L-3	Placing Stock		S.Y.	14,814	14,912
L-9	Seed & Protect		S.Y.	14,814	14,912
L-9	Comm. Fert.		Ton	1.4	1.23
L-19	Sp. Seeding		S.Y.	26,829	21,046
I-15	Guard Rail		L.F.	268	300
I-23	R/W Fence		L.F.	2,326	2,281
I-26	Perm. Mon.		Eq.	1	1
DRAINAGE					
E-2	Exc. for Str.		C.Y.	895	880
I-2	15" R.C.C.P. (b)		L.F.	632	634.4
I-2	21" R.C.S.P. (a) or 21" V.C.P. (a)		L.F.	130	130
I-8	Inlets Type A-1		Eq.	4	4
S-1	Conc. for Str.		C.Y.	37	47.92
S-4	Reinf. Steel		Lb.	2300	2,891.5
S-27	84" R.C.C.P. (b)		L.F.	207	209.4
I-8	Inlets Type B		Eq.	4	4
E-2	Str. Exc.		C.Y.		50.9
I-30	6" Pipe Outlet		L.F.		40
I-30	8" Pipe Outlet		L.F.		38
PAVEMENT					
I-22	Self. Subbase		C.Y.	7276	7,532.2
T-33	Bit. Mac. Surf. Course		S.Y.	9914	9,386.4
T-71	10" Reinf. Conc. Pavt.		S.Y.	15,080	15,309.3



PROFILE	AS SHOWN	DATE
NOTE BOOK	NOT REVISION	
NOTE BOOK	FLIGHT	
NOTE BOOK	ALIGNMENT CHECKED	
NOTE BOOK	REV. OF PLAN CHECKED	

No.	Revision	By	Date
2	As-Built Plans		05 1-5-56
1	Median Inlet & Outlet Pipe & Note Added with Revised Quantities 12-1-50		R.M. 11-8-53
	Ramp "H" Transition & Quantities Revised		
	Median Ditch Berm Added		

OHIO TURNPIKE COMMISSION
 OHIO TURNPIKE PROJECT NO. 1

PLAN AND PROFILE
 WILLIAMS COUNTY
 STA. 715+00 TO STA. 740+00

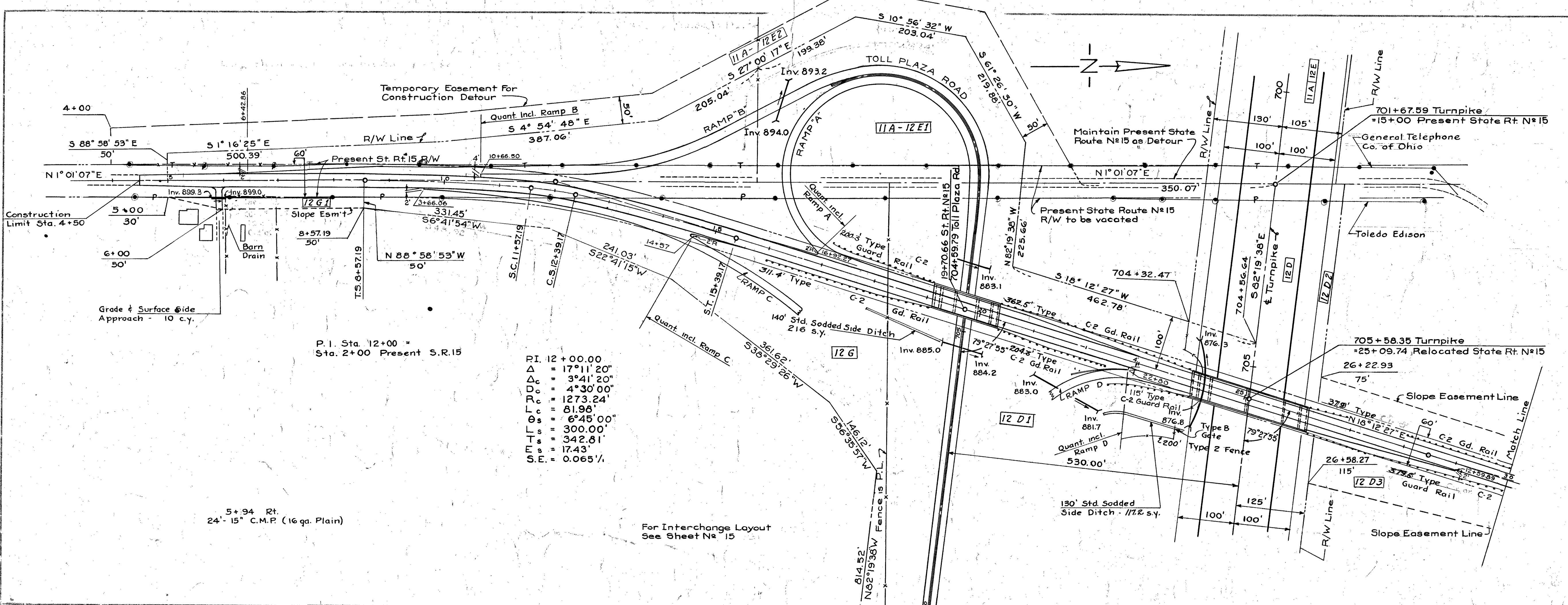
CONSOER, TOWNSEND & ASSOCIATES
 CONTRACTING ENGINEER
 DESIGN SECTION D-20

DESIGNED: R.L.M. CHECKED: E.A.H. DATE: April 23, 1953
 DRAWN: P.H.T./R.A.C. IN CHARGE: R.A.S. SCALE: 1" = 40'

CONTRACT NO. C-59 SHEET 4 OF 84

PLAN	SURVEYED	FLATTENED
NOTE BOOK	ALIGNED	CHECKED
NO.	RET.	BY

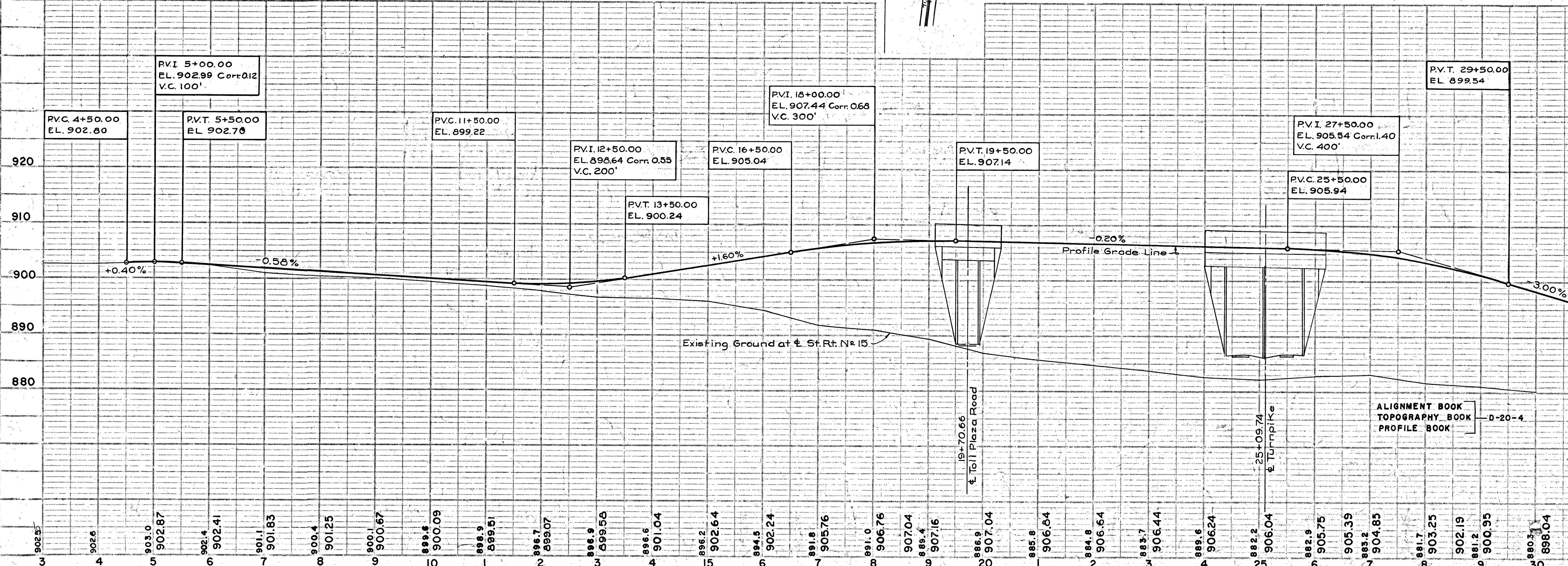
PROFILE	SURVEYED	FLATTENED
NOTE BOOK	ALIGNED	CHECKED
NO.	RET.	BY



P.I. 12+00.00
 Δ = 17° 11' 20"
 Δ_c = 3° 41' 20"
 Δ_s = 4° 30' 00"
 Δ_t = 1273.24'
 Δ_s = 81.98'
 Δ_t = 6° 45' 00"
 Δ_s = 300.00'
 Δ_t = 342.81'
 Δ_s = 17.43'
 S.E. = 0.065%

5+94 Rt.
24'-15" C.M.P. (16 ga. Plain)

For Interchange Layout
See Sheet No. 15



QUANTITIES					
No.	Item	Location & Remarks	Unit	Estimated Quantity	Final Quantity
ROADWAY					
E-4	Borrow		C.Y.		1,443
E-1	Roadway Exc.		C.Y.	5,371	4,673
L-3	Placing Stock		S.Y.	5,400	6,409
L-9	Seed & Pro-		S.Y.	5,400	6,409
L-9	Comm. Fert.	10' 6-4	Ton	0.5	0.52
I-15	Guard Rail	Type C-1 or C2	L.F.	1,955	1,952
L-10	Sodding		S.Y.	385	332.2
I-23	R/W Fence	Type 2	L.F.	200	146
L-19	Sp. Seeding		S.Y.	18,646	19,935
DRAINAGE					
I-1	15" C.M.P.	(16 Ga. Plain)	L.F.	24	24
I-30	6" Pipe Out-	lets	L.F.	20	0
PAVEMENT					
I-12	Curb, Type III		L.F.	202	315
I-22	Sel. Subbase		C.Y.	4165	3,369.2
B-20	Waterbound	Mac. Base Crse.	S.Y.	5879	5,780.4
T-30	Bit. Prime Coat		Gal.	2940	2,445
T-33	Bit. Mac.	Surf. Course	S.Y.	6895	7,311
B-35	Asph. Conc.	Leveling Course	C.Y.	249	239.9
T-35	Asph. Conc.	Surf. Course	C.Y.	249	262.1
T-71	Reinf. Conc.	Pav't - 10"	S.Y.	2144	2,374.7

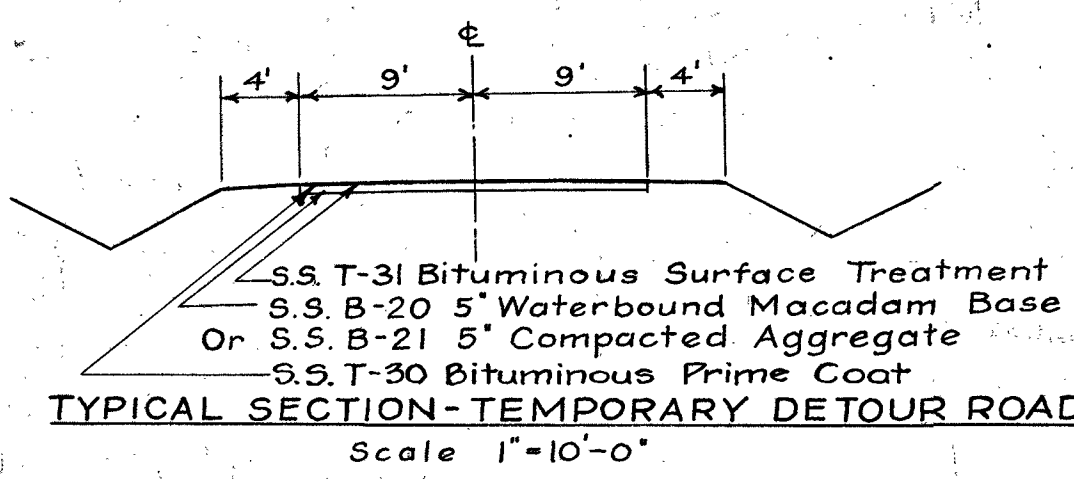
Profile Deck Revised - See P.P. 43-90-04			
2	As BUILT PLANS	JWP	3-5-58
1	Exist. Utilities on 5.2.15 Shown. Item B-20	DWH	11-20-58
1	Quant. Changed		
No.	Revision	By	Date

OHIO TURNPIKE COMMISSION
OHIO TURNPIKE PROJECT NO. 1
PLAN AND PROFILE
STATE ROUTE 15 RELOCATION

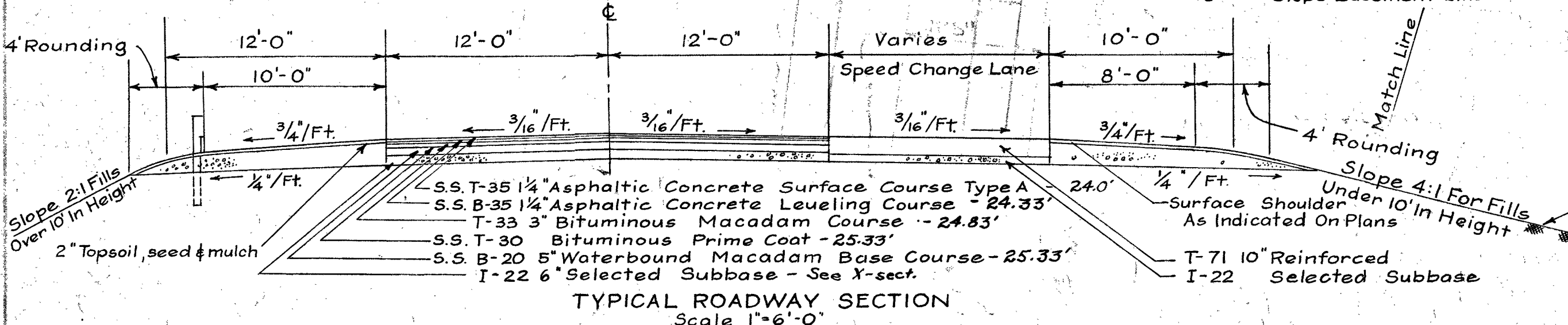
CONSOER, TOWNSEND & ASSOCIATES
 CONTRACTING ENGINEER
 DESIGN SECTION D-20

DESIGNED: F.E.G. CHECKED: R.L.M. DATE: 4-3-58
 DRAWN: D.W.T. IN CHARGE: R.A.S. SCALE: 1"=100' HOR. 1"=10' VERT.

CONTRACT NO. C-59 SHEET 11 OF 84

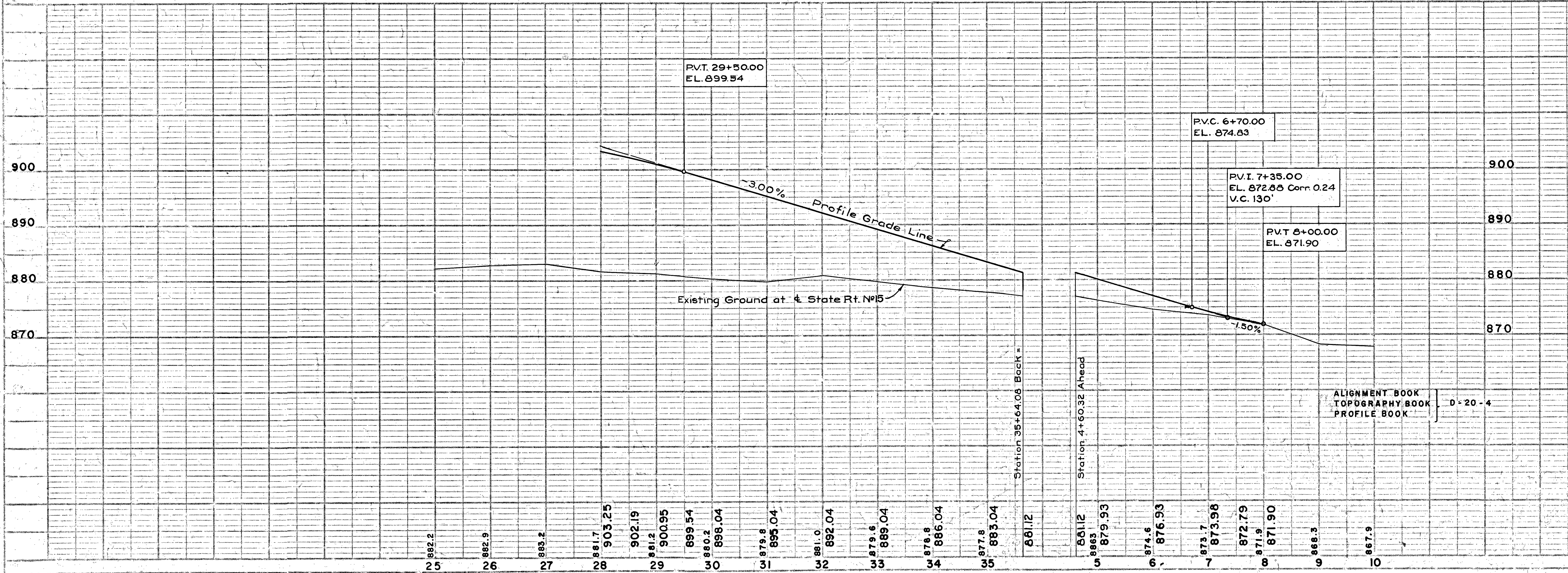
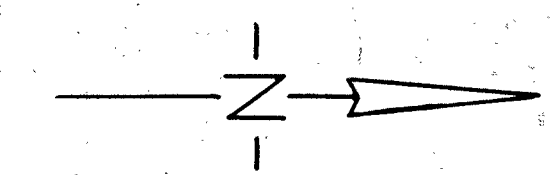


T-31 Bit. Material - 0.35 gal./sq. yd. M.C-4, M.C-5, RT-8, RT-9, or RT-10
 T-31 Aggregate - 0.01 cu yd./sq. yd. No. 6
 T-30 Bit. Material - 0.50 gal./sq. yd. MC-0, MC-1, RT-2 or RT-3



T-30 Bit. Prime Coat - 0.50 gal./sq. yd. M.C-0, M.C-1, R.T-2 or R.T-3

RI = 32+07.39
 Δ = 16°40'50"
 Δ_c = 4°40'50"
 Δ_c = 4°00'00"
 R_c = 1432.40'
 L_c = 117.01'
 Θ_s = 6°00'00"
 L_s = 300.00'
 T_s = 360.32'
 E_s = 17.95'
 $S.E.$ = 0.060 1/4



QUANTITIES					
No.	Item	Location & Remarks	Unit	Estimated Quantity	Final Quantity
ROADWAY					
E-1	Rdwy. Exc.		C.Y.	1,548	1,269
E-4	Borrow		C.Y.		321
L-3	Placing Stock-piled Topsoil		S.Y.	3,113	1,893
L-9	Seed & Protect, Type A		S.Y.	3,113	1,893
L-9	Comm. Fert. 10-6-4		Ton	0.3	0.16
L-19	Sp. Seeding		S.Y.	7,987	8,489
I-15	Guard Rail Type Gloré		L.F.	600	592
I-17	Side Approaches		C.Y.	60	60.49
DRAINAGE					
I-1	15" C.M.P. (16ga. Plain)		L.F.	54	54
I-1	24" R.C.C.P.		L.F.	28	28.5
PAVEMENT					
I-22	6" Sel. Subbase		C.Y.	1,414	1,152.2
B-20.5"	Water b'd Mac. Base Crse.		S.Y.	2,377	2,280
T-30	Prime Coat		Gal.	1,189	930
T-33	Bit. Mac. Course		S.Y.	2,377	2,470
B-35	Asph. Conc. Leveling Crse.		C.Y.	99	99
T-35	Asph. Conc. Surf. Crse.		C.Y.	99	99

BRIDGE DECK REPLACED - SEE E.P. 43-90-04

2 AS BUILT PLANS J.P. 3-5-54

1 Exist. Util. on S.R. 15 shown under 1/2" sect. Temp. Det. Ed. 27-7-54 and 27-10-54 added. DMH 1/20/53

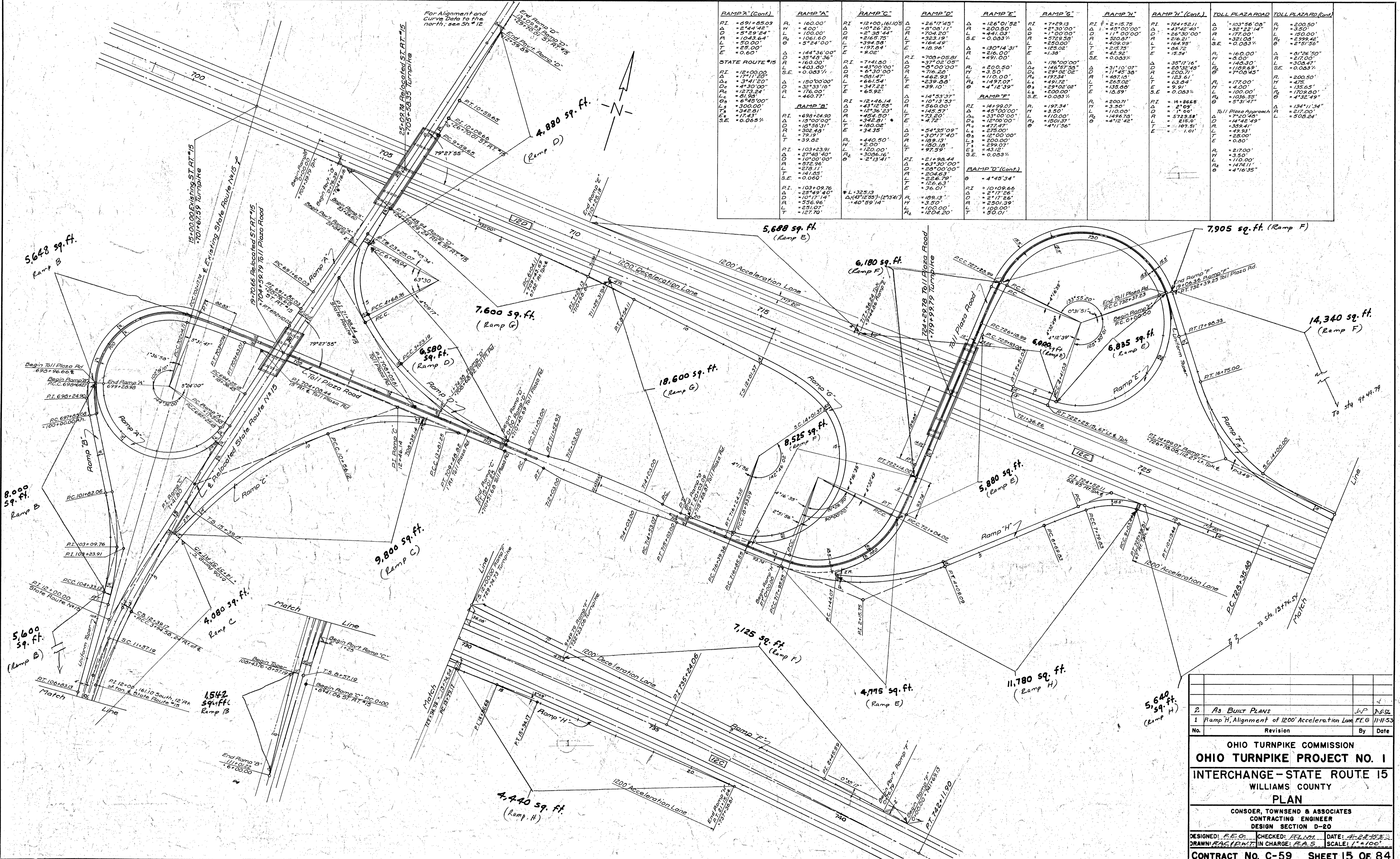
No.	Revision	By	Date

OHIO TURNPIKE COMMISSION
OHIO TURNPIKE PROJECT NO. 1
 PLAN AND PROFILE
 STATE ROUTE 15 RELOCATION

CONSOER, TOWNSEND & ASSOCIATES
 CONTRACTING ENGINEER
 DESIGN SECTION D-20

DESIGNED: F.E.G. CHECKED: A.L.M. DATE: 1-3-53
 DRAWN: G.W.C. IN CHARGE: R.A.S. SCALE: 1"=100'

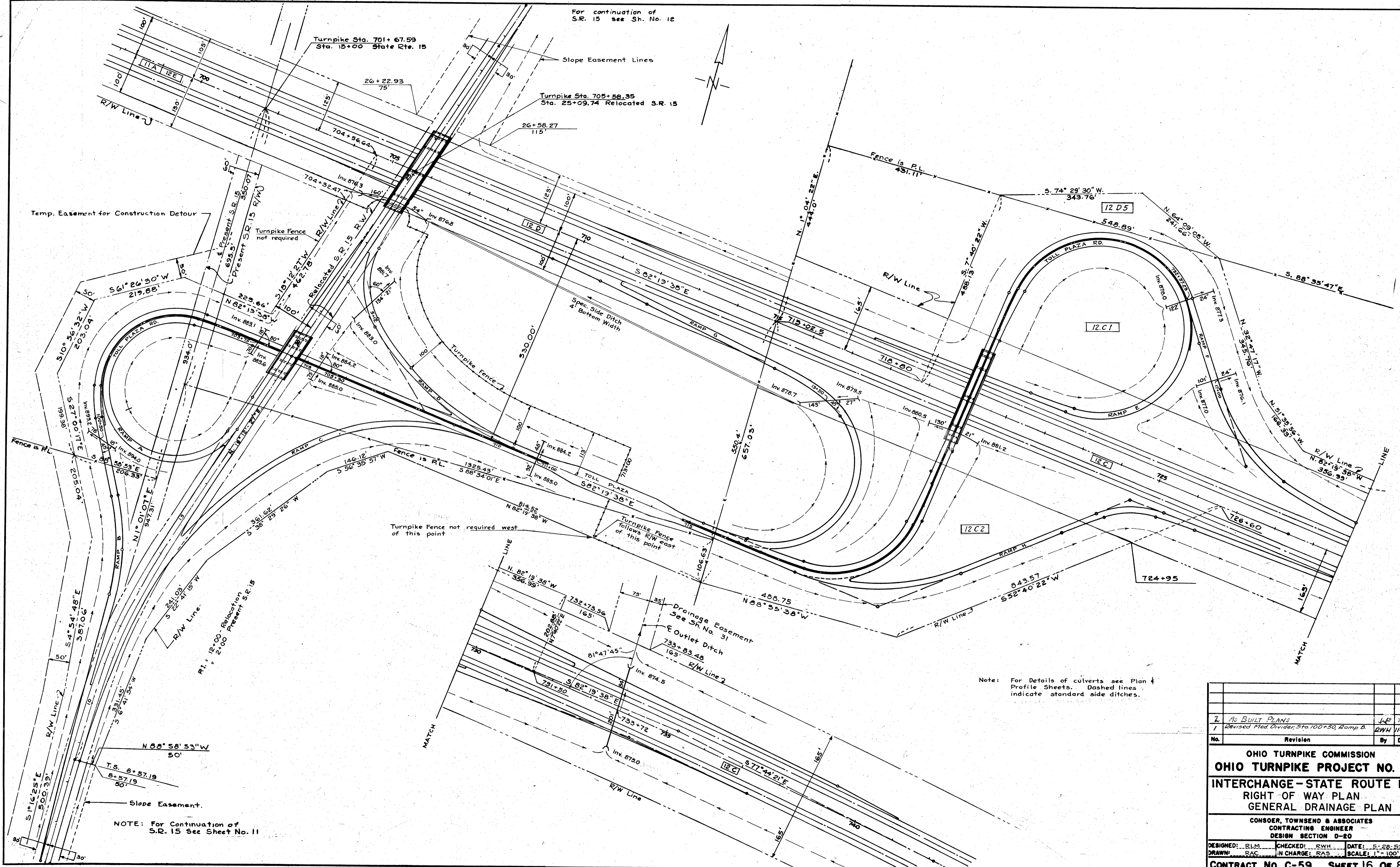
CONTRACT NO. C-59 SHEET 12 OF 84



RAMP A (Cont.)	RAMP A	RAMP C	RAMP D	RAMP E	RAMP G	RAMP H	RAMP H (Cont.)	TOLL PLAZA ROAD	TOLL PLAZA ROAD (Cont.)
PI = 691+05.03 R = 100.00 D = 100.00 L = 1043.64 T = 25.00 E = 0.60	PI = 160.00 R = 100.00 L = 100.00 D = 100.00 L = 1043.64 T = 25.00 E = 0.60	PI = 12+00.16/105 R = 100.00 L = 100.00 D = 100.00 L = 1043.64 T = 25.00 E = 0.60	PI = 26+17.45 R = 100.00 L = 100.00 D = 100.00 L = 1043.64 T = 25.00 E = 0.60	PI = 126+01.52 R = 100.00 L = 100.00 D = 100.00 L = 1043.64 T = 25.00 E = 0.60	PI = 7+29.13 R = 100.00 L = 100.00 D = 100.00 L = 1043.64 T = 25.00 E = 0.60	PI = 2+15.72 R = 100.00 L = 100.00 D = 100.00 L = 1043.64 T = 25.00 E = 0.60	PI = 724+52.11 R = 100.00 L = 100.00 D = 100.00 L = 1043.64 T = 25.00 E = 0.60	PI = 103+36.05 R = 100.00 L = 100.00 D = 100.00 L = 1043.64 T = 25.00 E = 0.60	PI = 200.50 R = 100.00 L = 100.00 D = 100.00 L = 1043.64 T = 25.00 E = 0.60

2 As BUILT PLANS		WP	3-5-52
1 Ramp H, Alignment of 1200' Acceleration Lane FE G		11-11-53	
No.	Revision	By	Date
OHIO TURNPIKE COMMISSION OHIO TURNPIKE PROJECT NO. 1 INTERCHANGE - STATE ROUTE 15 WILLIAMS COUNTY PLAN			
CONSOER, TOWNSEND & ASSOCIATES CONTRACTING ENGINEER DESIGN SECTION D-20			
DESIGNED: F.E.G.	CHECKED: F.E.G.	DATE: 11-22-53	
DRAWN: RACIM	IN CHARGE: R.A.S.	SCALE: 1"=100'	
CONTRACT NO. C-59		SHEET 15 OF 84	

For continuation of
S.R. 15 see Sh. No. 12



Temp. Easement for Construction Detour

Turnpike Sta. 701+67.59
Sta. 15+00 State Rte. 15

Turnpike Sta. 705+58.35
Sta. 25+09.74 Relocated S.R. 15

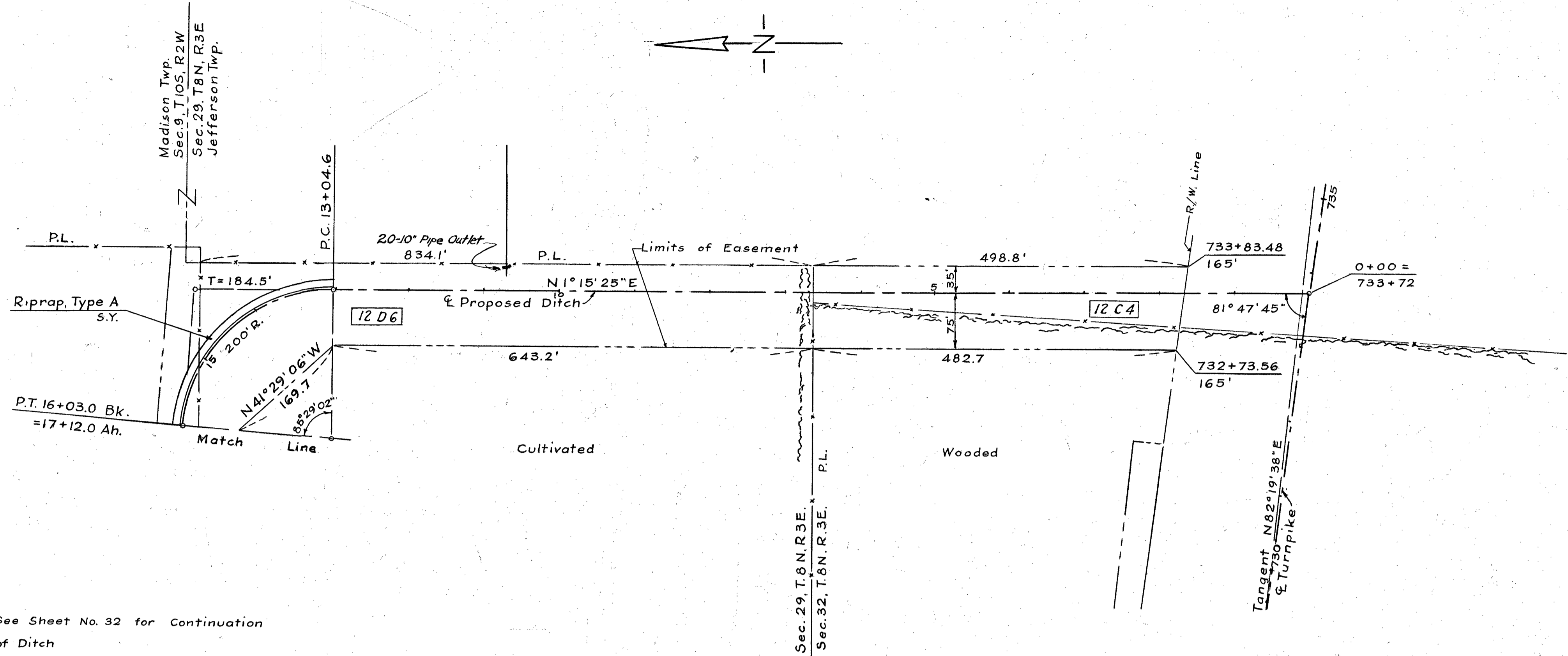
NOTE: For Continuation of
S.R. 15 See Sheet No. 11

Note: For Details of culverts see Plan &
Profile Sheets. Dashed lines
indicate standard side ditches.

OHIO TURNPIKE COMMISSION			
OHIO TURNPIKE PROJECT NO. 1			
INTERCHANGE - STATE ROUTE 15			
RIGHT OF WAY PLAN			
GENERAL DRAINAGE PLAN			
CONSOER, TOWNSEND & ASSOCIATES			
CONTRACTING ENGINEER			
DESIGN SECTION D-20			
DESIGNED: RLM	CHECKED: RWH	DATE: 5-28-52	
DRAWN: RAC	IN CHARGE: RAS	SCALE: 1" = 100'	
CONTRACT NO. C-59 SHEET 16 OF 84			

PLAN	SURVEYED	DATE
	PLOTTED	BY
	NOTE BOOK	
	ALIGNED	
	CHECKED	
	BY	
	NO.	

PROFILE	SURVEYED	DATE
	PLOTTED	BY
	NOTE BOOK	
	ALIGNED	
	CHECKED	
	BY	
	NO.	



See Sheet No. 32 for Continuation of Ditch

Note: Excavated Material from Ditch, if suitable, to be incorporated in Turnpike Roadway Embankment.



ALIGNMENT BOOK
TOPOGRAPHY BOOK
PROFILE BOOK

D-20-5

QUANTITIES					
No.	Item	Location & Remarks	Unit	Estimated Quantity	Final Quantity
DRAINAGE					
E-3	Channel Exc.		C.Y.	12,838	12,838
F-10	Riprap, Type A		S.Y.	7758	7751
I-30	10" Pipe Outlet		L.F.		20
L-19	Sp. Seeding		S.Y.		5,450

1 AS-BUILT PLANS

No. Revision By Date

OHIO TURNPIKE COMMISSION
OHIO TURNPIKE PROJECT NO. 1

PLAN & PROFILE
WILLIAMS COUNTY
OUTLET DITCH-STA.733+72

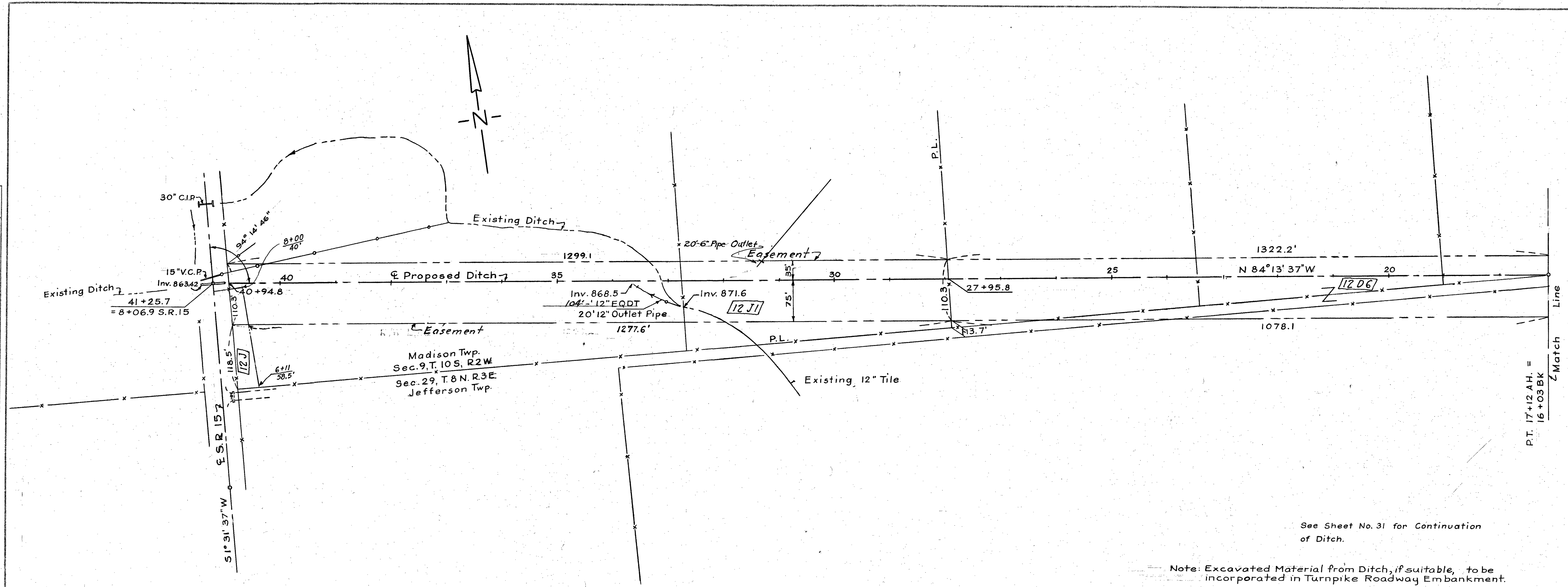
CONSOER, TOWNSEND & ASSOCIATES
CONTRACTING ENGINEER
DESIGN SECTION D-20

DESIGNED: R.L.M. CHECKED: F.E.G. DATE: 3-13-53
DRAWN: B.W.H. IN CHARGE: Z.A.S. SCALE: 1"=100'

CONTRACT NO. C-59 SHEET 31 OF 84

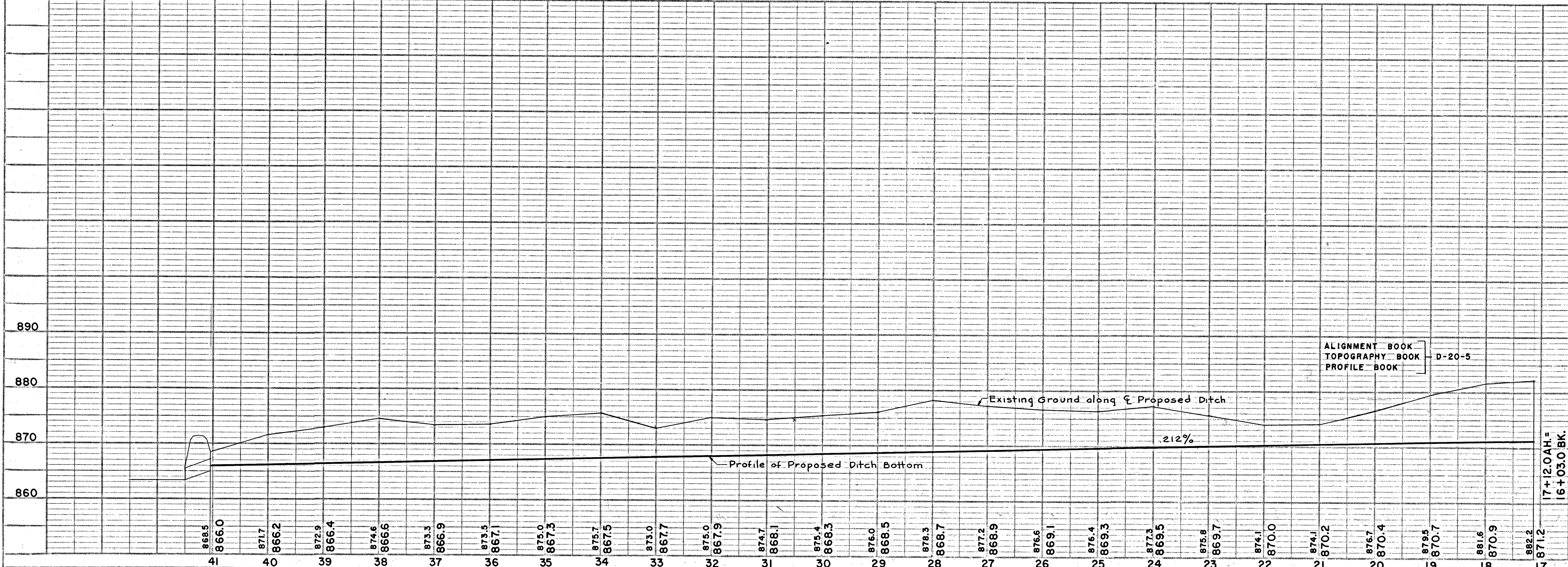
DATE	
BY	
PLANNED	
SURVEYED	
NOTED	
NO.	

DATE	
BY	
PLANNED	
SURVEYED	
NOTED	
NO.	



See Sheet No. 31 for Continuation of Ditch.

Note: Excavated Material from Ditch, if suitable, to be incorporated in Turnpike Roadway Embankment.



ALIGNMENT BOOK
TOPOGRAPHY BOOK
PROFILE BOOK

QUANTITIES					
No.	Item	Location & Remarks	Unit	Estimated Quantity	Final Quantity
DRAINAGE					
E-3	Channel Exc.		C.Y.	11,756	11,567
I-30	12" Farm Drain E.Q.D.T.		L.F.	90	104
I-30	12" Pipe Outlet		L.F.	20	20
I-30	6" Pipe Outlet		L.F.		20
L-19	Sp. Seeding		SY.		10,868

1		As-Built Plans	J.P.	3-5-56
No.	Revision		By	Date
OHIO TURNPIKE COMMISSION OHIO TURNPIKE PROJECT NO. 1 PLAN & PROFILE WILLIAMS COUNTY OUTLET DITCH-STA.733 +72 CONSOER, TOWNSEND & ASSOCIATES CONTRACTING ENGINEER DESIGN SECTION D-20 DESIGNED: P.L.M. CHECKED: F.E.G. DATE: 5-12-53 DRAWN: P.W.H. IN CHARGE: R.A.S. SCALE: 1"=100'				
CONTRACT NO. C-59 SHEET 32 OF 84				