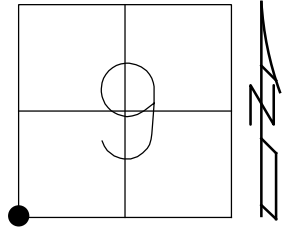


O.D.O.T. DISTRICT 2 SURVEY OFFICE (USE ONLY)

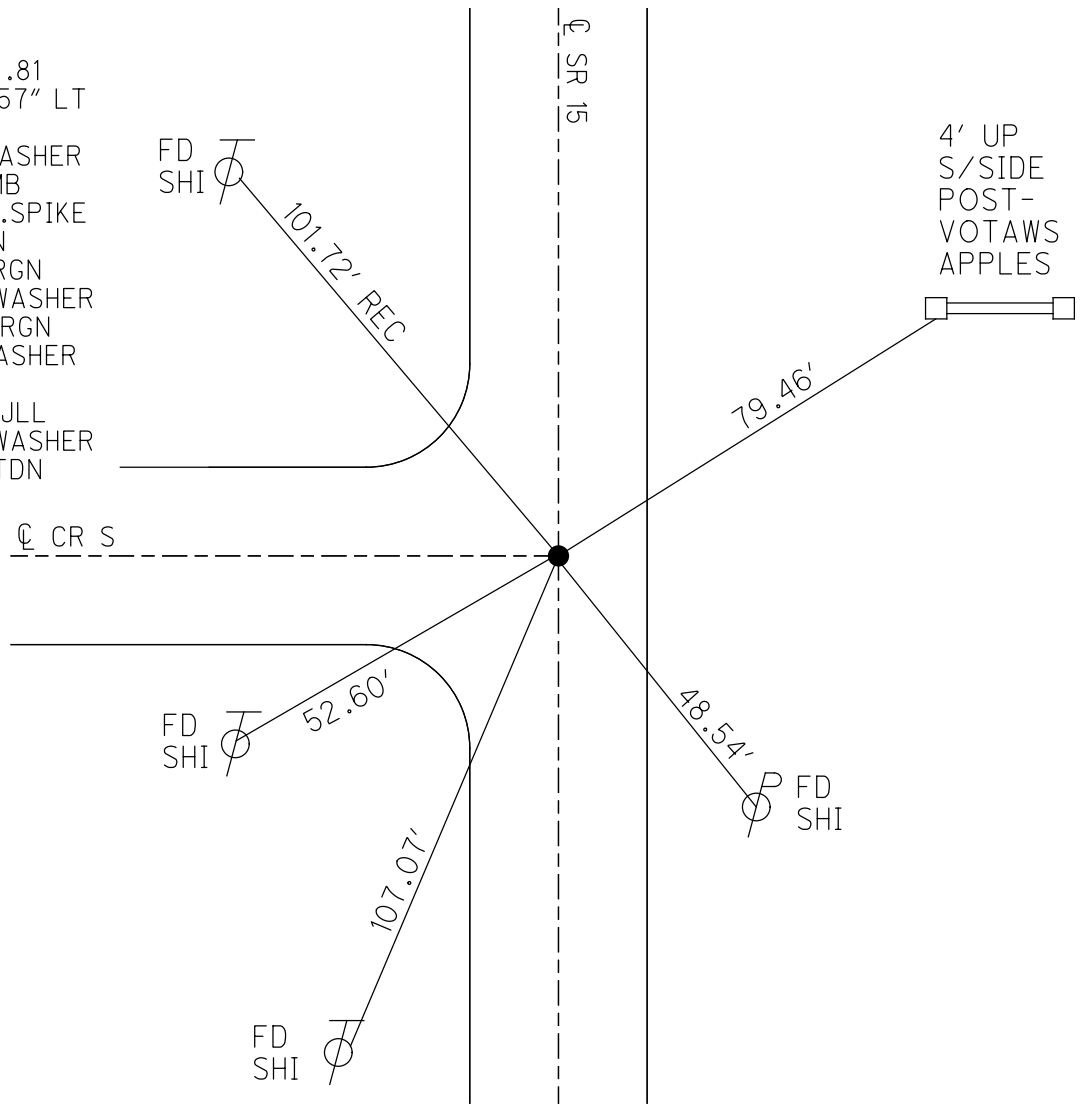
PERSONNEL \_\_\_\_\_ REFERENCE NO. 3 SHEET 3 OF 40  
 NOTES ABNER DATE 10/18/21 ROUTE SR 15  
 H.C. AUBLE WEATHER CLEAR COUNTY WILLIAMS  
 R.C. ABNER TEMP. 55° TOWNSHIP MADISON  
 DWG BY RHOADES PID 95786 SECTION 9  
 T 9 S R 2 W

TYPE MONUMENT MAG/WASHER  
 ON SURFACE - ~~BELOW~~ ON  
 OFFSET Q PAVEMENT 0.8' LT : RT  
13.1' TO LT EDGE PAVEMENT  
 STATION: 27+83.83

HORZ.DATUM: NAD83 2011 GEOID: NAVD88 2012B  
 GRID: NORTHING: 745465.311 EASTING: 1407723.638



RECORD:  
 STA.27+83.81  
 $\Delta = 0^\circ 18' 57''$  LT  
 1956  
 FD P.K./WASHER  
 8-31-88, MB  
 FD SM.R.R.SPIKE  
 0.15' DOWN  
 5/29/17, RGN  
 SET MAG/WASHER  
 8/28/07, RGN  
 FD MAG/WASHER  
 REF3  
 3/24/20, JLL  
 SET MAG/WASHER  
 9/19/22, TDN



O.D.O.T. DISTRICT 2 SURVEY OFFICE (USE ONLY)

PERSONNEL \_\_\_\_\_ REFERENCE NO. 3 SHEET 3 OF 39

NOTES NUHFER \_\_\_\_\_ DATE 5/29/07 ROUTE SR 15  
 H.C. HUSS \_\_\_\_\_ WEATHER SUNNY COUNTY WILLIAMS  
 R.C. HOUESHELL \_\_\_\_\_ TEMP. 70° TOWNSHIP MADISON  
 \_\_\_\_\_ SECTION 16  
 T 9 S R 2 W

TYPE MONUMENT SM.R.R.SPIKE

~~ON SURFACE~~ - BELOW 0.15'  
~~LEFT~~ - Q PAV'T - RIGHT 0.8' WEST, ON Q CR S  
13.1' TOLT EDGE PAVEMENT

S.L.M. 27+84

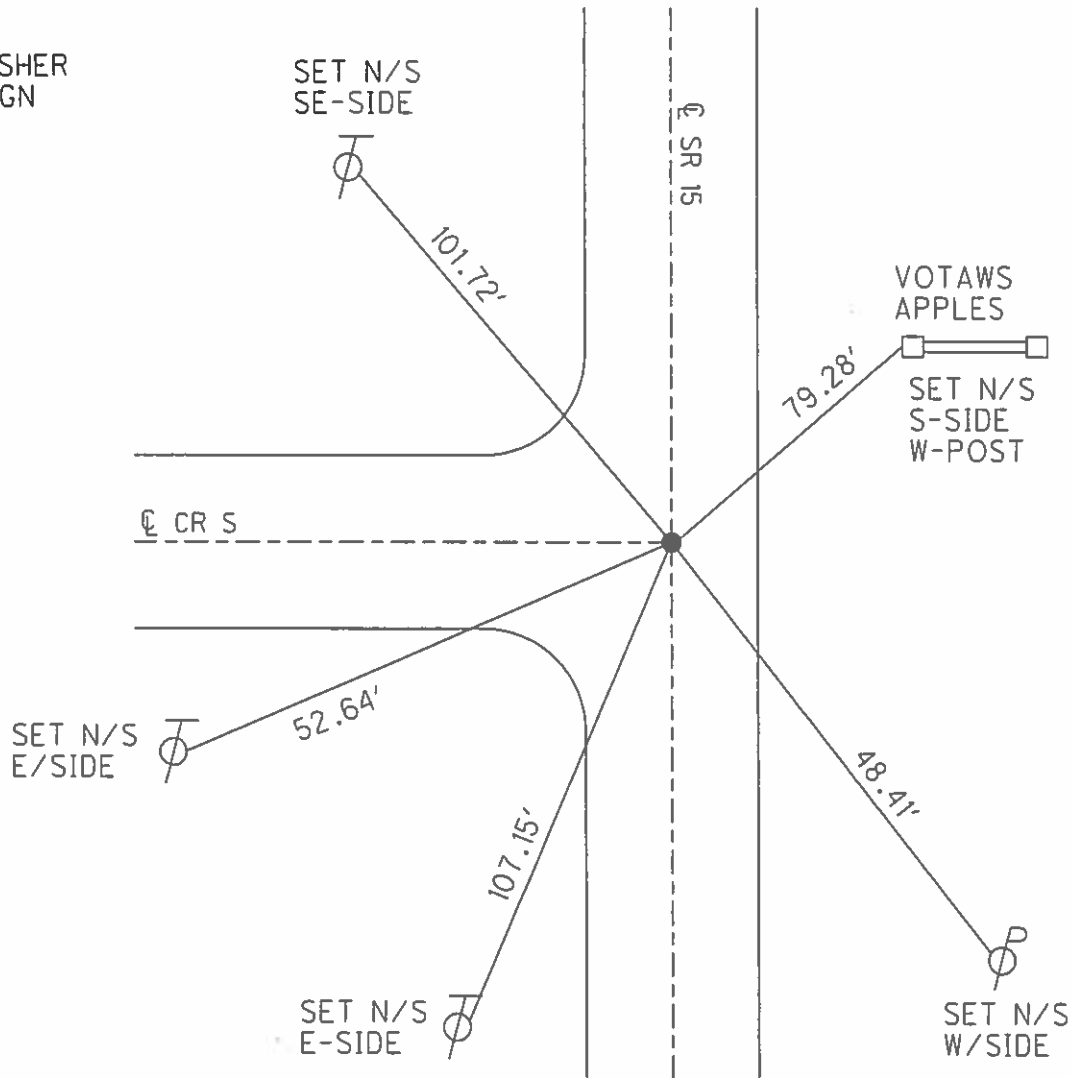
GRID: NORTHING: 745465.344 EASTING: 1407723.544

8	9
17	16



PK/WASHER  
8-31-88 MB

SET MAG/WASHER  
8-28-07 RGN



O.D.O.T. DISTRICT 2 SURVEY OFFICE (USE ONLY)

PERSONNEL \_\_\_\_\_ REFERENCE NO. 3 SHEET 3 OF 39

NOTES NUHFER \_\_\_\_\_ DATE 5/29/17 ROUTE SR 15  
 H.C. HUSS \_\_\_\_\_ WEATHER SUNNY COUNTY WILLIAMS  
 R.C. HOUESHELL \_\_\_\_\_ TEMP. 70° TOWNSHIP MADISON  
 \_\_\_\_\_ SECTION 16  
 T 9 S R 2 W

TYPE MONUMENT SM.R.R.SPIKE

~~ON SURFACE~~ - BELOW 0.15'

~~LEFT~~ - Q PAV'T - RIGHT 0.8' WEST, ON Q CR S

13.1' TOLT EDGE PAVEMENT

S.L.M. 27+84

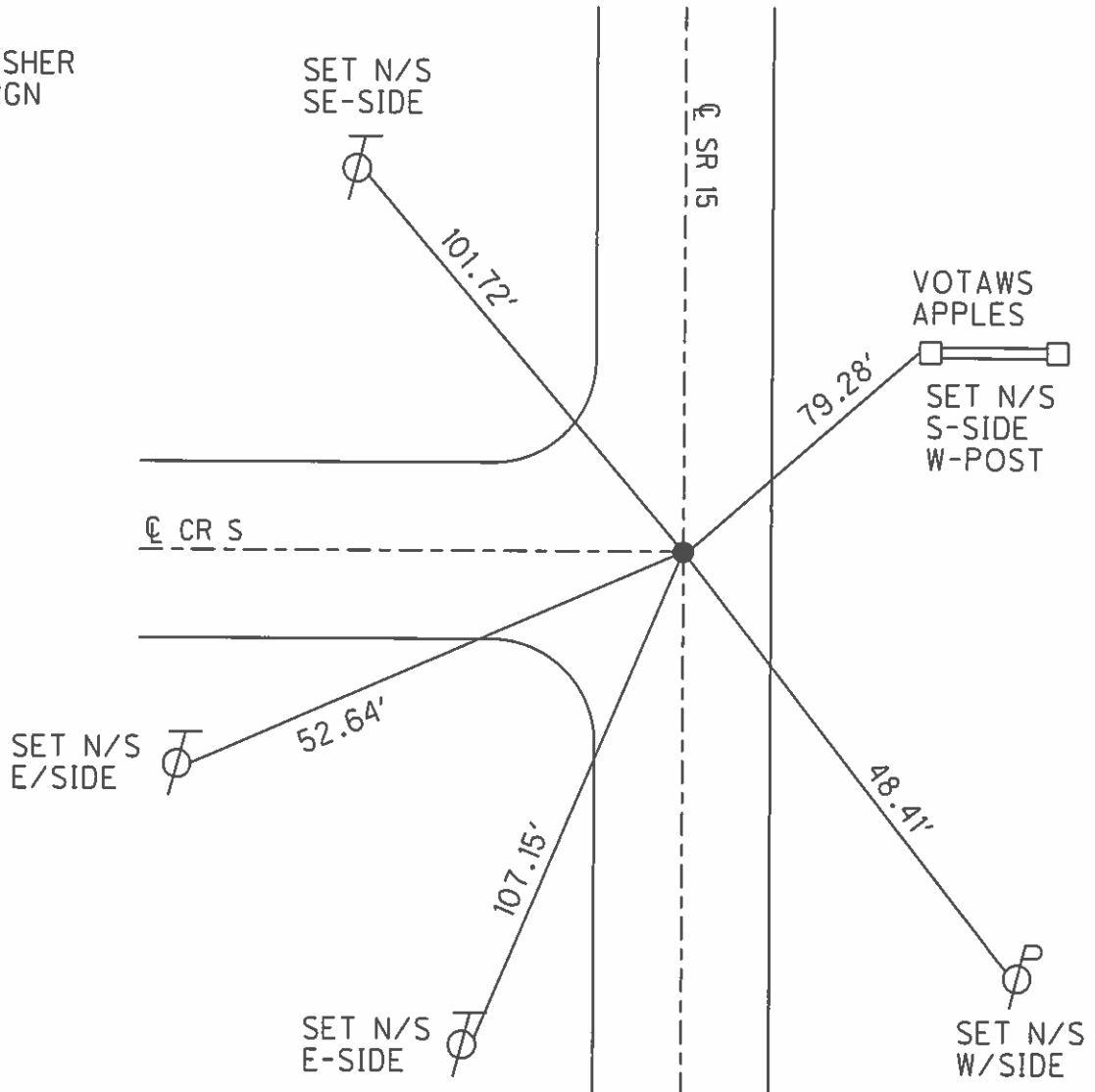
GRID: NORTHING: 745465.344 EASTING: 1407723.544

8	9
17	16



PK/WASHER  
8-31-88 MB

SET MAG/WASHER  
8-28-07 RGN



# O.D.O.T. DISTRICT 2 SURVEY OFFICE

PERSONNEL \_\_\_\_\_

REFERENCE NO. 3

SHEET \_\_\_\_\_ OF \_\_\_\_\_

NOTES BARNHISEL

H.C. Loehke

DATE 7-29-88

ROUTE 15

R.C. Reed

WEATHER SUNNY

COUNTY Williams

TEMP. +85°

TOWNSHIP Madison

SECTION 16

T. 9 S. R 2 W.

TYPE MONUMENT Sm RR Spk

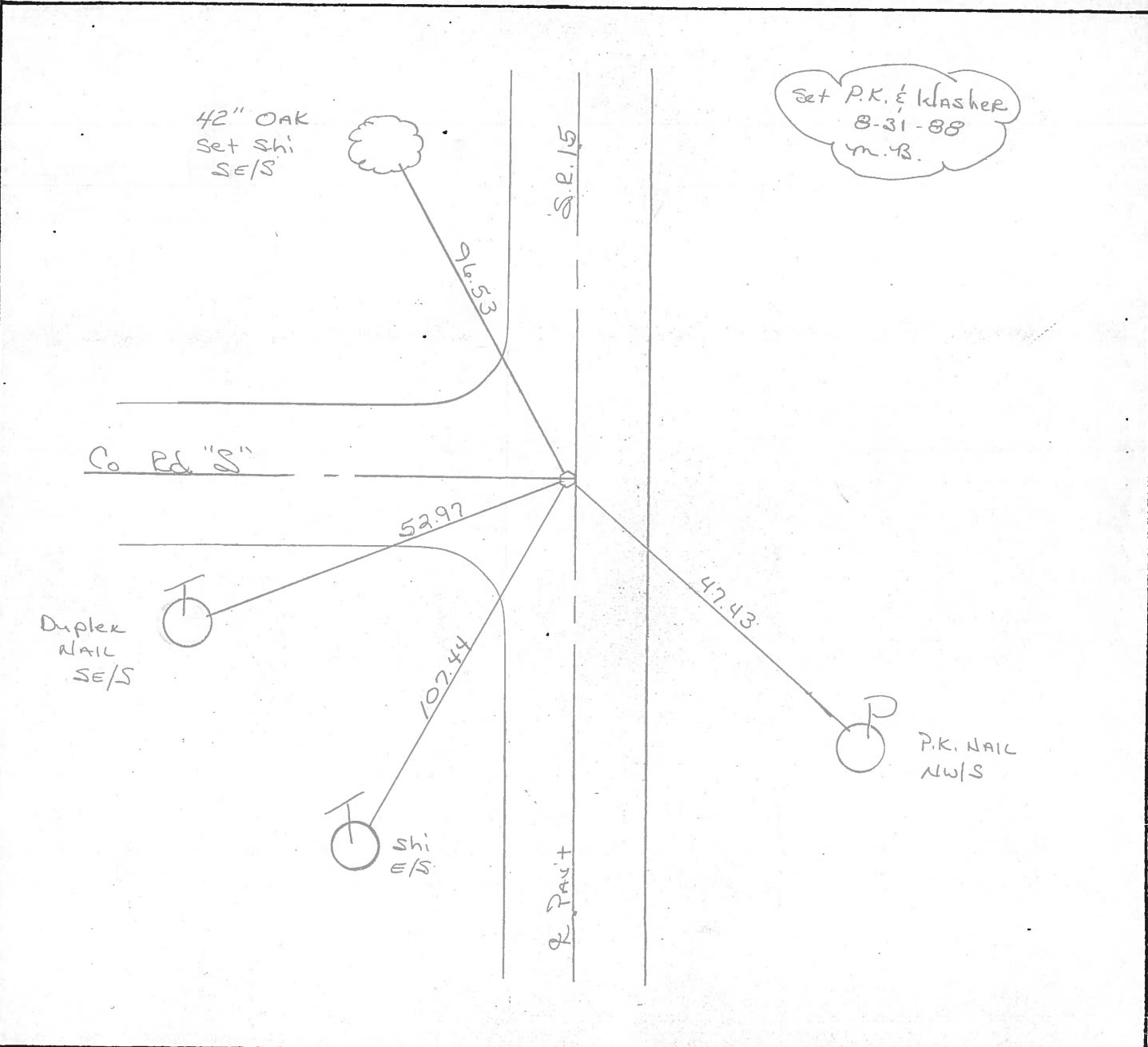
ON SURFACE - ~~BELOW~~ yes

LEFT - & PAV'T. - RIGHT 0.8

12.9 TO LT EDGE PAVEMENT ON E. OF RD "S"

S.L.M. 27+84

8	9
17	16



County WILLIAMS S.R. 15

Township MADISON

Section N.W. COR. SEC. 16

T9, R2E

Personnel HOFFMAN

LOEHRKE

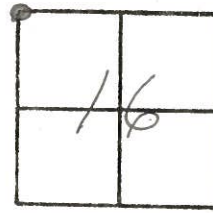
HOUSEHOLDER

#42 **(3)**

Date 5-12-82

Weather CLEAR

Temp. +90°



FD. 1" I. PIPE @ SURFACE  
E 0.8' RT. OF & PAVE. S.R. 15  
& ON & PAVE. RD. "S" WEST.

PIPE IS OVER 1" I. ROD  
AS PER R. BEACH  
OCT. 25-72.

SPK. N.E. SIDE  
40' OAK

SET SMALL R.R. SPK.  
8-10-82  
S.W.H.

S.L.M. 27+84±

(MEAS. TO MICHIGAN)  
LIDE. BY R. BEACH

15

SEC. 8  
SEC. 9

98.09'

2784.06

58.91'

"+" CUT 6" DOWN FROM TOP.  
S.W/SIDE STEEL COR. POST

WILLIAMS COUNTY ROAD "S"

SEC. 8  
SEC. 17

SEC. 9  
SEC. 16

52.97'

DUPLEX NAIL  
S.E. SIDE

107.49'

SHI. E/SIDE

SEC. 17  
SEC. 16

47.91'

P.K. NAIL  
N.W/SIDE

S.R.  
S.R.

County WILLIAMS S.R. 15

Date 11-30-79

Township MADISON

Weather CLOUDY

Section N.W. COR. SEC. 16

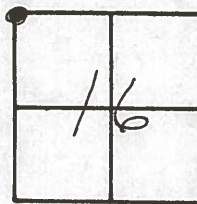
Temp. +29°

~~T9N~~, ~~R2E~~

Personnel BURNSIDE

SMITH

MEAD



FD. 1" IRON PIPE  
@ SURFACE E IN  
CTR. PAVE. OVER  
REC. 1" I. ROD AS  
PER RED BEACH  
(OCT. 25-1972)

~~4/2~~ (3)

SPK. N.E. SIDE  
40" OAK

15

98.13

2784.06 (MEAS. TO MICH  
LINE BY R. BEACH)

SEC. 8  
SEC. 9

WILLIAMS COUNTY ROAD "S" SEC. 8

SEC. 17.  
53.01

SEC. 9  
SEC. 16

DUPLEX NAIL  
S.E. SIDE

107.36

47.44

P.K.

SEC. 17  
SEC. 16

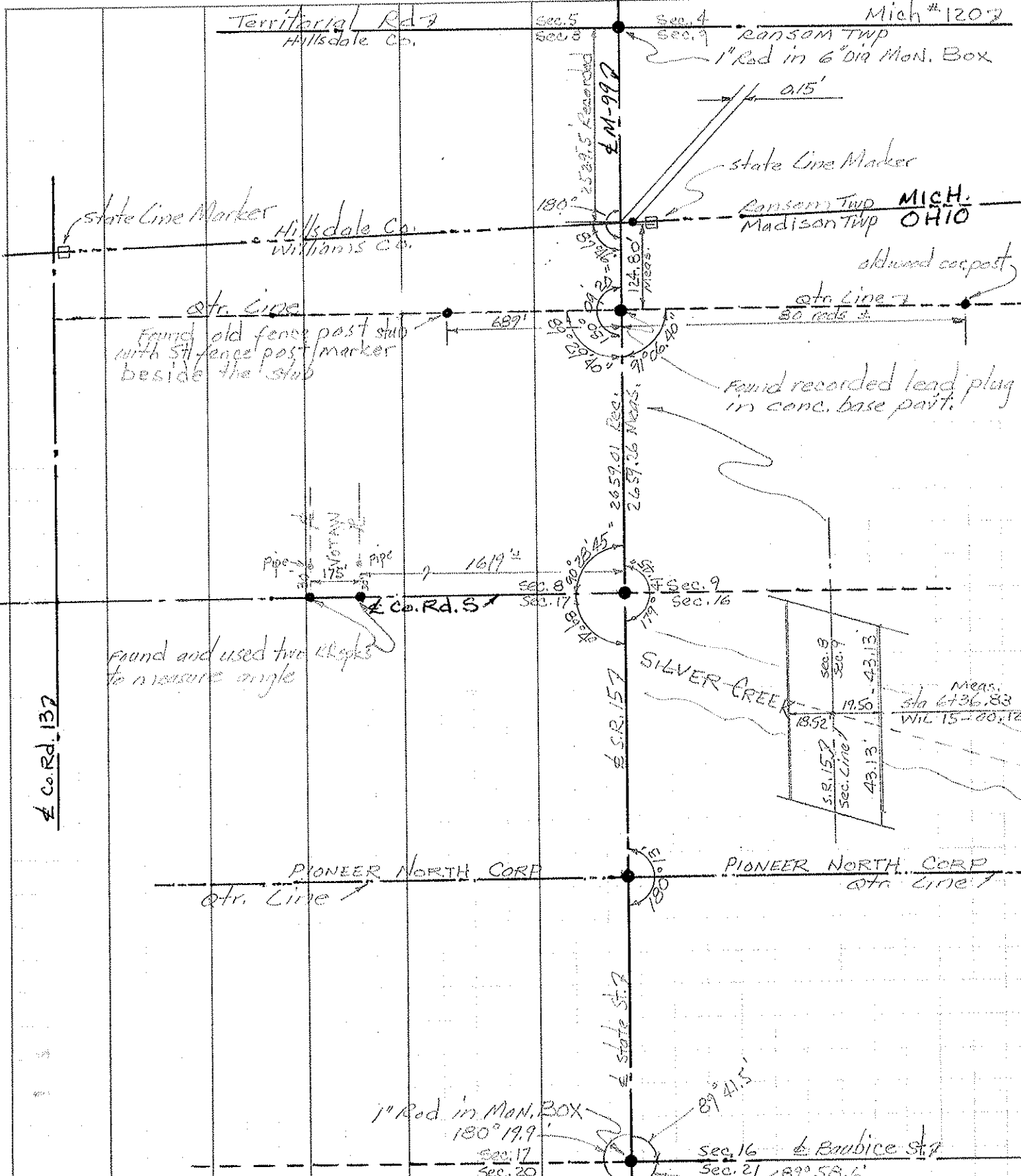
SHI.

S.R.

PERSONNEL	TITLE	PERSONNEL	TITLE	COUNTY	DATE
Red Beach				Williams	Oct. Nov. '72
Newcomb				S. R.	15
Knap				WEATHER	
				SEC. STATE LINE - PIONEER	TEMP.

# ALIGNMENT

DESCRIPTION \_\_\_\_\_ LEFT \_\_\_\_\_ CENTER LINE \_\_\_\_\_ RIGHT \_\_\_\_\_ JOB NO. \_\_\_\_\_

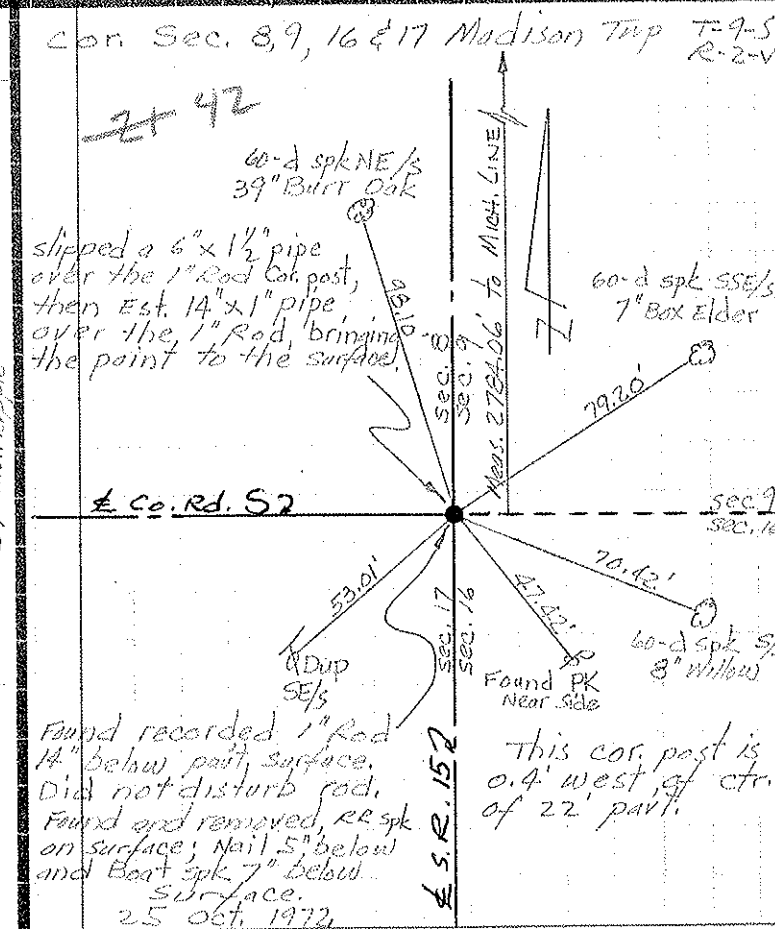
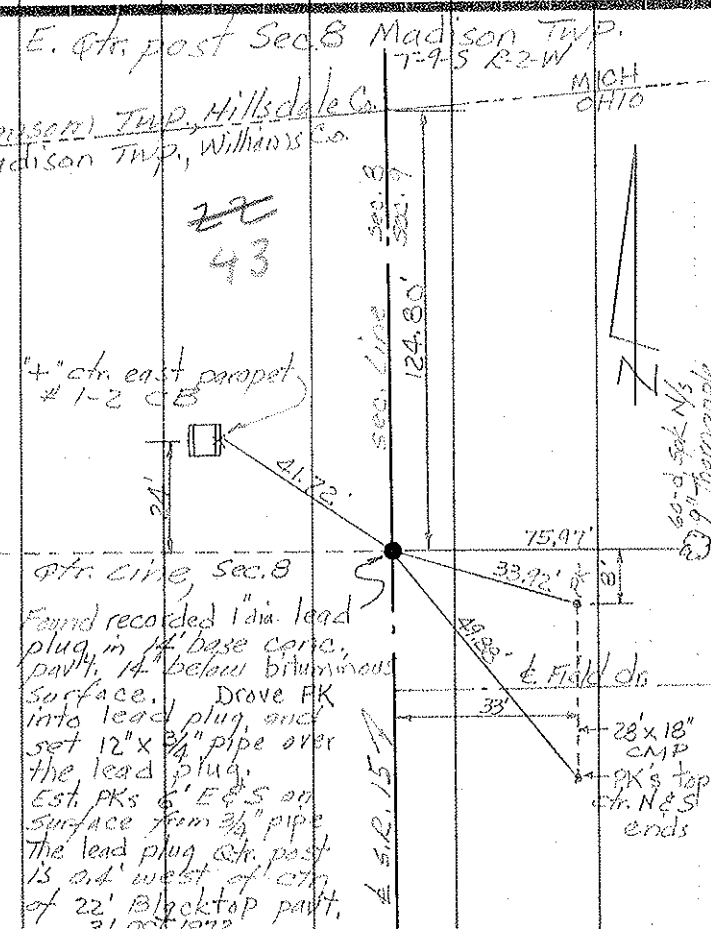
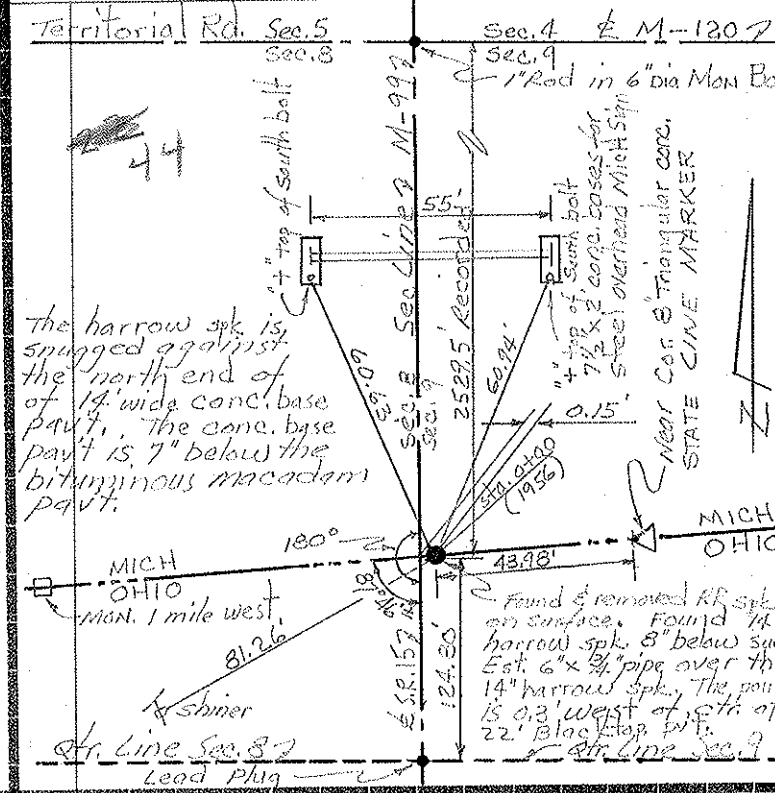
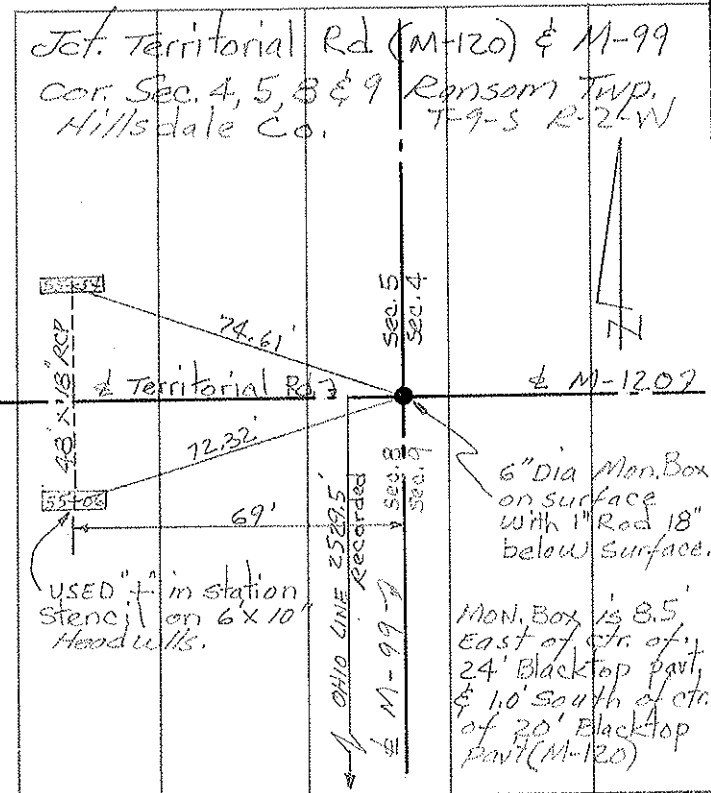


PERSONNEL TITLE PERSONNEL TITLE  
 Red Beach \_\_\_\_\_  
 Newcomb \_\_\_\_\_  
 Knappe \_\_\_\_\_

COUNTY Williams DATE Oct-Nov. 1972  
 S. R. 15 WEATHER \_\_\_\_\_  
 SEC. Madison Twp. TEMP. \_\_\_\_\_

### CONTROL POINTS

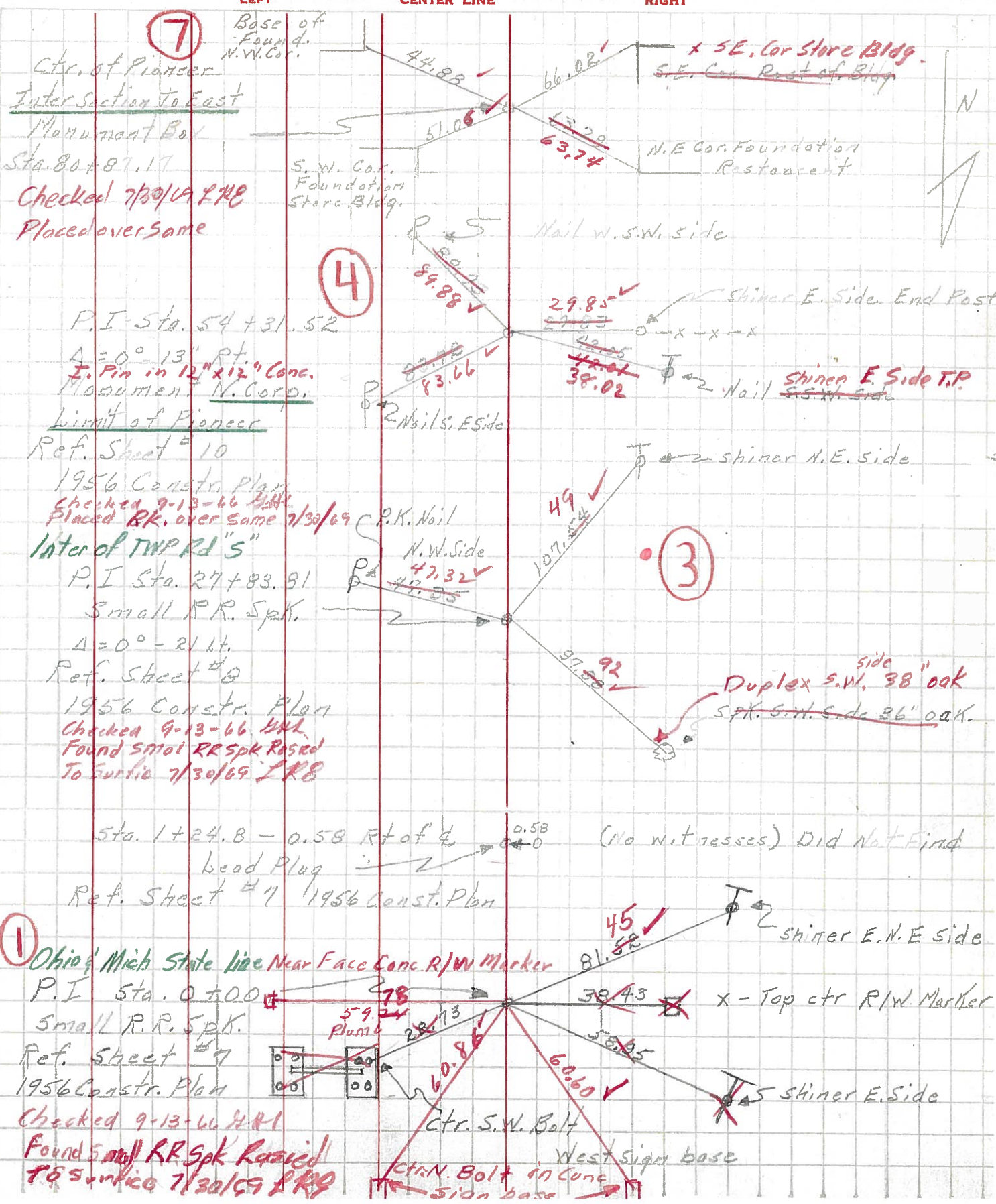
DESCRIPTION LEFT CENTER LINE RIGHT JOB NO.





PERSONNEL	TITLE	PERSONNEL	TITLE	COUNTY	DATE	WEATHER	TEMP.
Bowman				Wm's	3-4-64	Partly Cloudy	38° 75°
Huff				#15			
Barid				From Mich. line			
				To Rt #20			

DESCRIPTION Re-Check of Control Points JOB NO. \_\_\_\_\_



**7**  
 Base of Found. N.W. Cor.  
 Ctr. of Pioneer  
 Inter Section to East  
 Monument Box  
 Sta. 80+87.17  
 Checked 7/30/69 LRB  
 Placed over same

**4**  
 S.W. Cor. Foundation Store Bldg.  
 P.I. Sta. 54+31.52  
 $\Delta = 0^\circ - 13''$  Pt.  
 T. Pin in 12" x 12" Conc. Monument N. Cor.  
 Limit of Pioneer  
 Ref. Sheet # 10  
 1956 Constr. Plan  
 Checked 9-13-66 HRL  
 Placed BK. over same 7/30/69  
 Inter of TWP Rd "S"  
 P.I. Sta. 27+83.81  
 Small R.R. Spk.  
 $\Delta = 0^\circ - 21''$  Lt.  
 Ref. Sheet # 8  
 1956 Constr. Plan  
 Checked 9-13-66 HRL  
 Found small RR Spk Razed To surface 7/30/69 LRB

**3**  
 SE. Cor Store Bldg.  
 SE. Cor Rest of Bldg.  
 N.E. Cor. Foundation Restaurant  
 Shiner E. Side End Post  
 Shiner E. Side T.P.  
 Shiner N.E. Side  
 Duplex S.W. 38" oak  
 Spk. S.W. Side 36" oak

**1**  
 Ohio & Mich State line Near Face Conc R/W Marker  
 P.I. Sta. 0+0.0  
 Small R.R. Spk.  
 Ref. Sheet # 7  
 1956 Constr. Plan  
 Checked 9-13-66 HRL  
 Found small RR Spk Razed To surface 7/30/69 LRB

Sta. 1+24.8 - 0.58 Rt of d  
 (No witnesses) Did Not Find lead Plug  
 Ref. Sheet # 7 1956 Const. Plan

West Sign base  
 Ctr. N. Bolt in Conc  
 Ctr. S.W. Bolt

PERSONNEL TITLE PERSONNEL TITLE

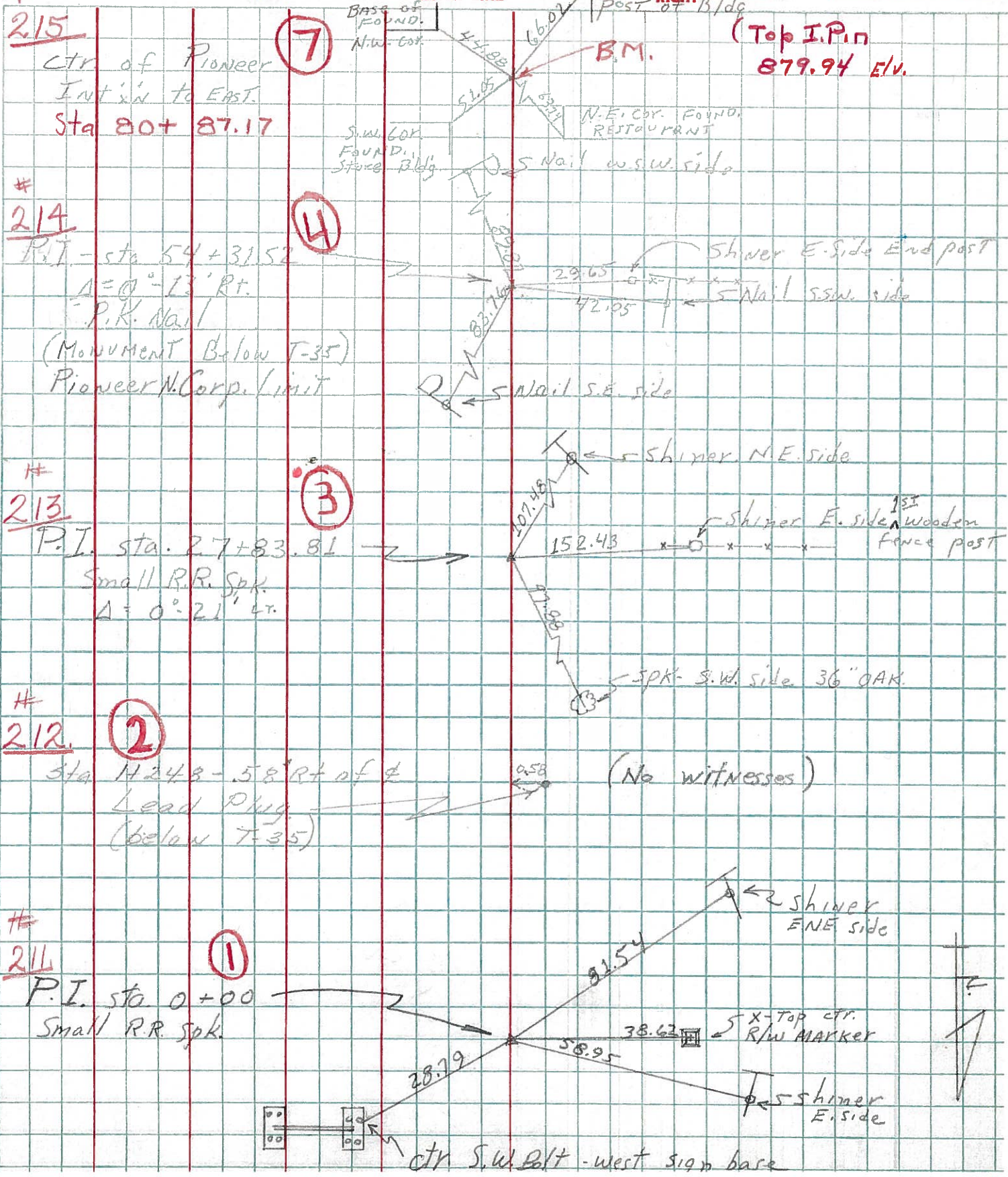
COUNTY Wi. DATE 7-22-58

Louys  
Persefall  
Wise  
Krahn

S. R. 15 WEATHER Cloudy  
From Mich. Line  
SEC. To Rt #20 TEMP. 75°

DESCRIPTION Re-check of Witnesses JOB NO. \_\_\_\_\_

66243



PERSONNEL	TITLE	PERSONNEL	TITLE
Louys			
Rutter			
Knepe			
Dierks			

COUNTY Wi. DATE 1-10-56  
 S. R. 15 WEATHER Cloudy  
 SEC. \_\_\_\_\_ TEMP. 30°

DESCRIPTION Witnesses to Control Points JOB NO. \_\_\_\_\_

Sta 27+83.81  
 Found Iron Pin  
 $\Delta = 0^{\circ} - 21' Lt$



Sta. 1+24.8 (Established Tack in Pav't)  
 $\Delta = 0^{\circ} - 00'$



Sta. 0+00 (Ohio-Michigan Line)  
 Found Iron Pin  
 $\Delta = 0^{\circ} - 08' Lt$



Sta. 0-2529.5 (Intersec. M-99 & M-120)  
 Found I.P.

