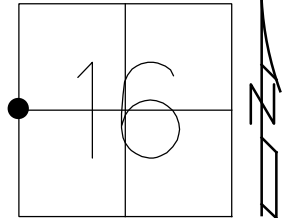


O.D.O.T. DISTRICT 2 SURVEY OFFICE (USE ONLY)

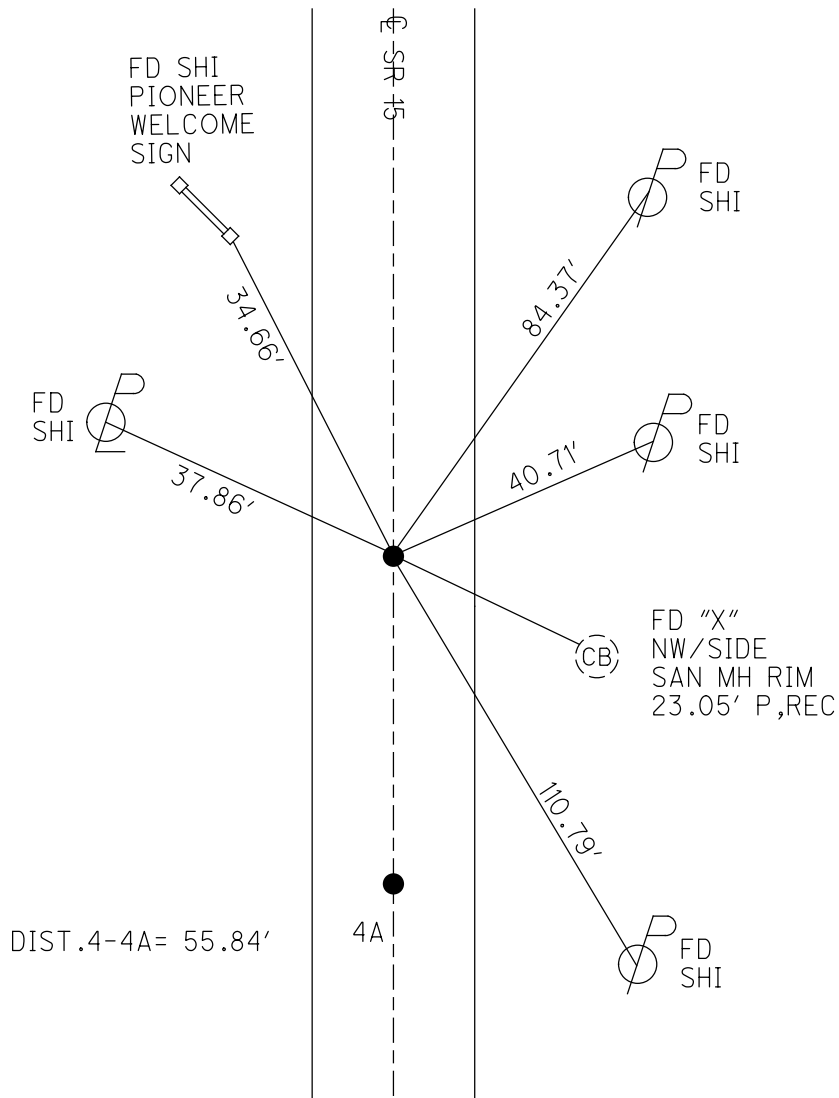
PERSONNEL \_\_\_\_\_ REFERENCE NO. 4 SHEET 4 OF 40  
 NOTES ABNER DATE 10/18/21 ROUTE SR 15  
 H.C. AUBLE WEATHER CLEAR COUNTY WILLIAMS  
 R.C. ABNER TEMP. 55° TOWNSHIP MADISON  
 DWG BY RHOADES PID 95786 SECTION 16  
 T 9 S R 2 W

TYPE MONUMENT MAG/WASHER  
 ON SURFACE - ~~BELOW~~ ON  
 OFFSET Q PAVEMENT ON LT : RT  
11.6' TO LT EDGE PAVEMENT  
 STATION: 54+30.99



HORZ.DATUM: NAD83 2011 GEOID: NAVD88 2012B  
 GRID: NORTHING: 742818.923 EASTING: 1407659.285

RECORD:  
 STA.54+31.52  
 $\Delta = 0^\circ 13' RT$   
 1956  
 FD P.K./WASHER  
 8/31/88, MB  
 5/29/07, RGN  
 SET MAG/WASHER  
 8/28/07, RGN  
 FD MAG/WASHER  
 REF4  
 3/24/20, JLL  
 SET MAG/WASHER  
 9/19/22, DSA



O.D.O.T. DISTRICT 2 SURVEY OFFICE (USE ONLY)

PERSONNEL \_\_\_\_\_ REFERENCE NO. 4 SHEET 4 OF 39

NOTES NUHFER \_\_\_\_\_ DATE 5/29/07 ROUTE SR 15

H.C. HUSS WEATHER SUNNY COUNTY WILLIAMS

R.C. HOUESHELL TEMP. 70° TOWNSHIP MADISON

SECTION 16

T 9 S R 9 W

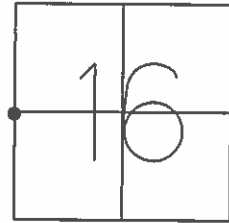
TYPE MONUMENT P.K./WASHER

ON SURFACE - ~~BELOW~~ ON \_\_\_\_\_

LEFT - ☉ PAV'T - ~~RIGHT~~ 0.3' EAST

11.6' TOLT EDGE PAVEMENT

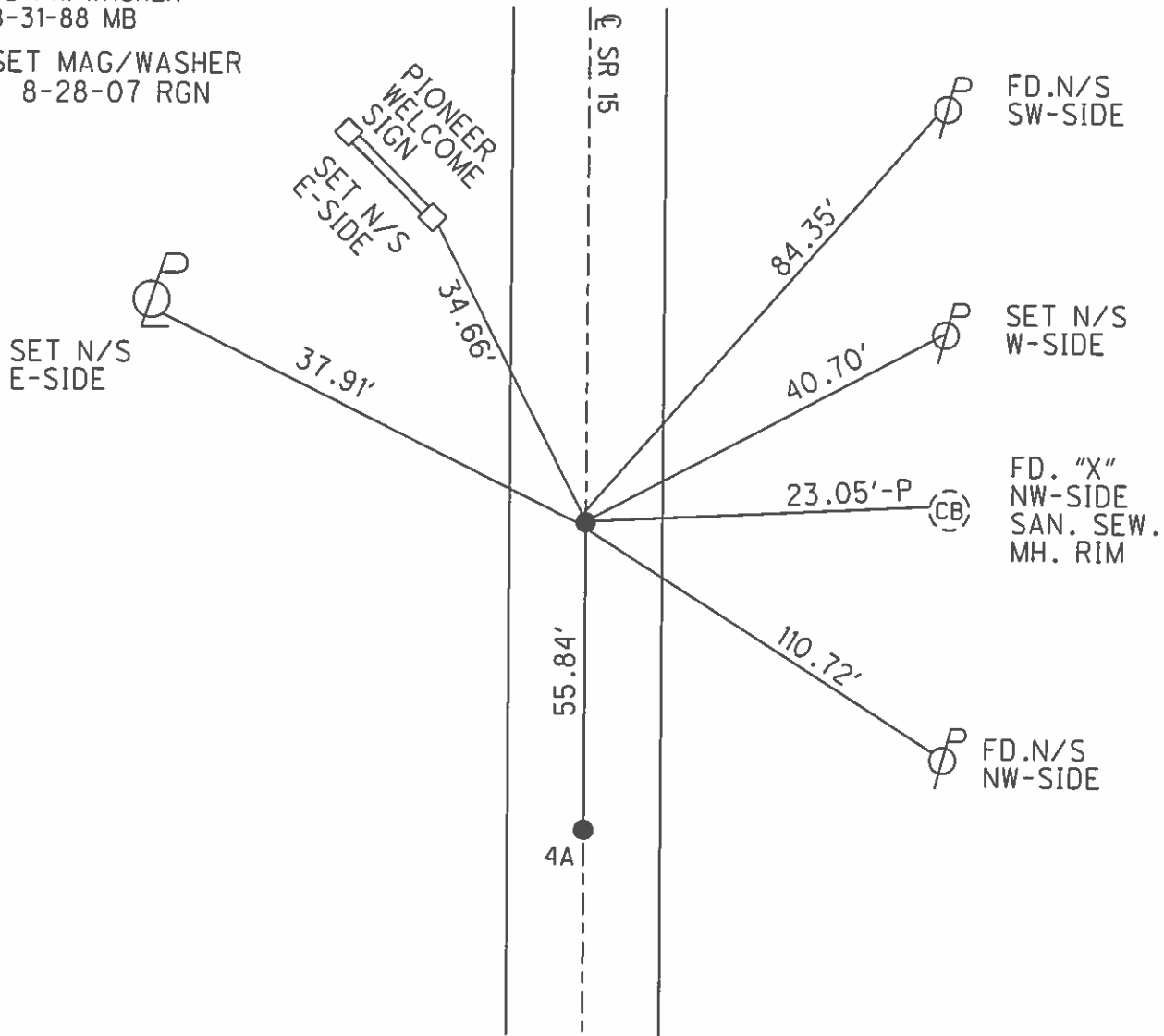
S.L.M. 54+33



GRID: NORTHING: 742818.908 EASTING: 1407659.241

FD PK/WASHER  
8-31-88 MB

SET MAG/WASHER  
8-28-07 RGN



# O.D.O.T. DISTRICT 2 SURVEY OFFICE

PERSONNEL \_\_\_\_\_

REFERENCE NO. 4

SHEET \_\_\_\_\_ OF \_\_\_\_\_

NOTES BARNHISEL

H.C. Loehrke

DATE 7-29-88

ROUTE 15

R.C. Reed

WEATHER SUNNY

COUNTY Williams

TEMP. +85°

TOWNSHIP Madison

SECTION 16

T 9 S R 2 W

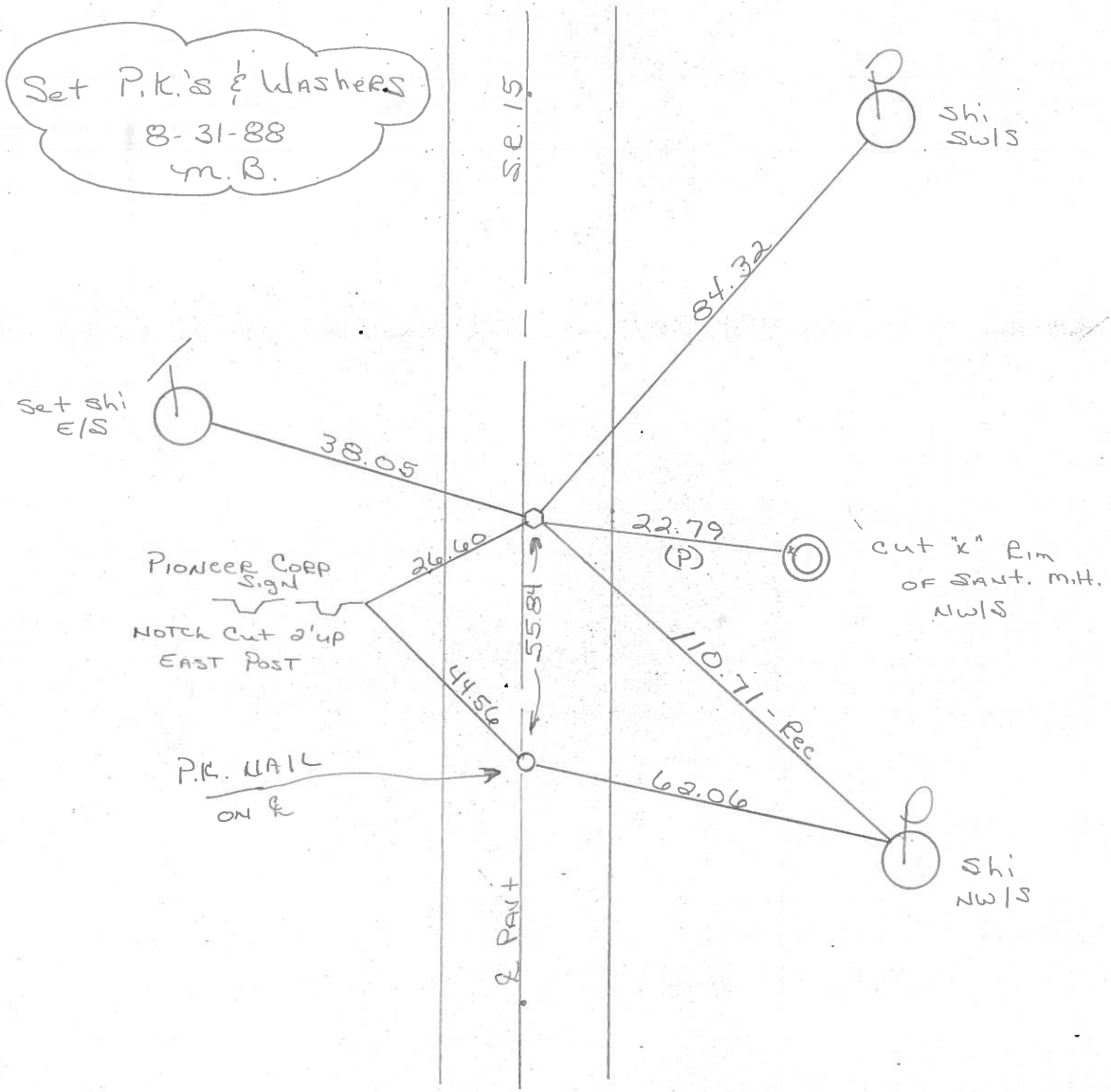
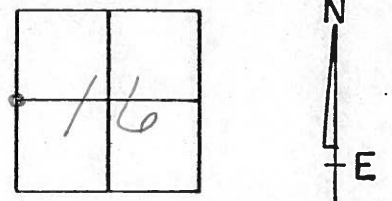
TYPE MONUMENT Sm RR Spk

ON SURFACE - BELOW yes

LEFT- & PAV'T. - RIGHT 0.3

11.4 TO L EDGE PAVEMENT

S.L.M. 54+33



County WILLIAMS S.R. 15

Township MADISON

Section W 1/4 Post Sec. 16

T9, R2

Personnel HOFFMAN

LOEHRKE

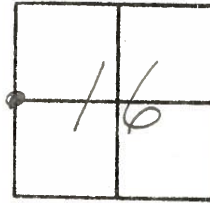
HOUSEHOLDER

# 41 (4)

Date 5-12-82

Weather CLEAR

Temp. +90°



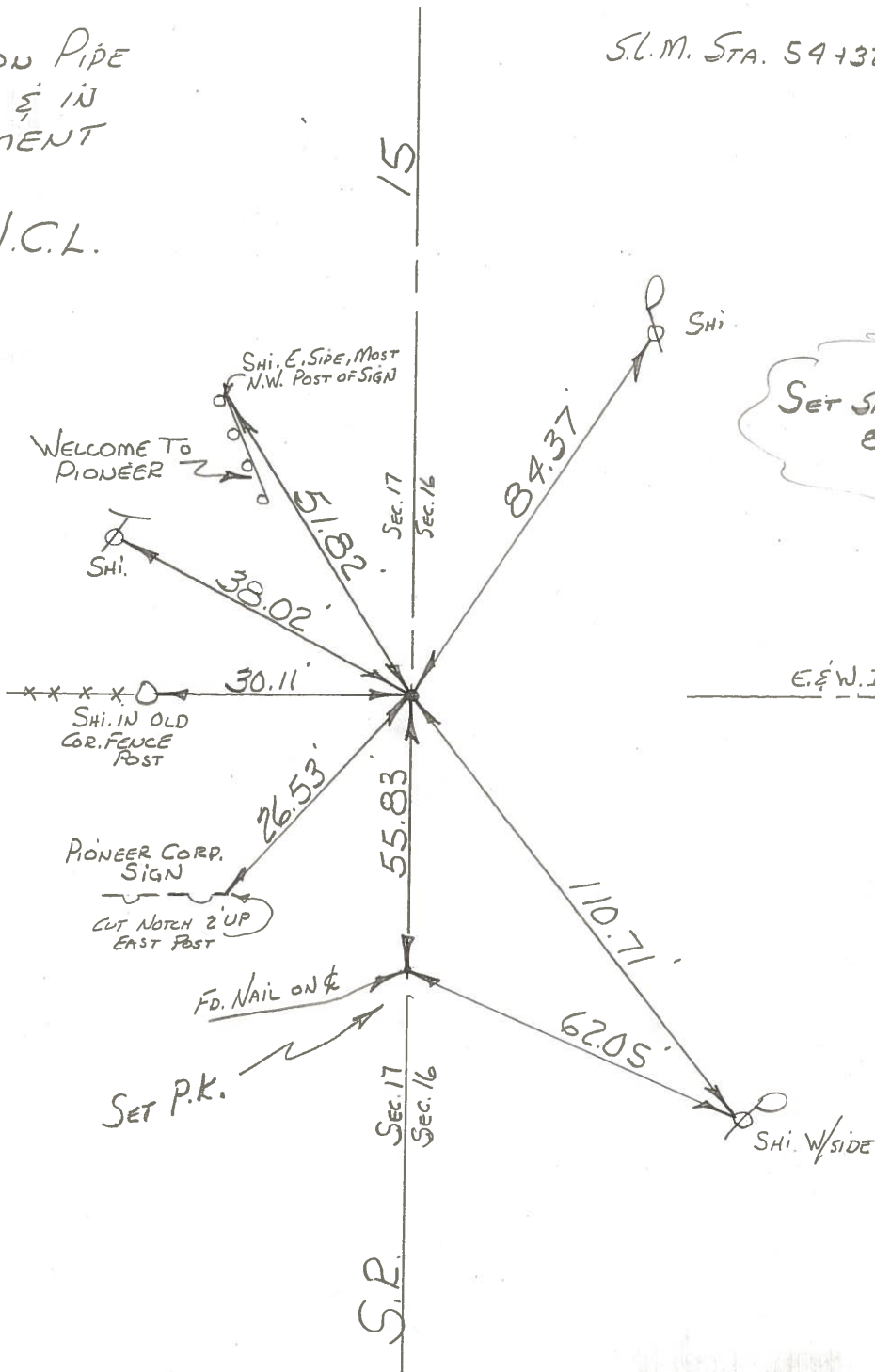
FD. 1/2" IRON PIPE  
@ SURFACE & IN  
CTR. PAVEMENT

PIONEER N.C.L.

S.L.M. STA. 54+32 ±

E. & W. INTERIOR LINE  
SEC. 17

E. & W. INTERIOR LINE  
SEC. 16



SET SMALL R.R. SPK.  
8-10-82  
S.W.H.

County Williams S.R. 15

Date 11-30-79

Township MADISON

Weather CLEAR

Section W 1/4 Post. Sec. 16

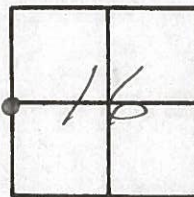
Temp. +26°

~~T9N~~, ~~R2E~~

Personnel BURNSIDE

SMITH

MEAD

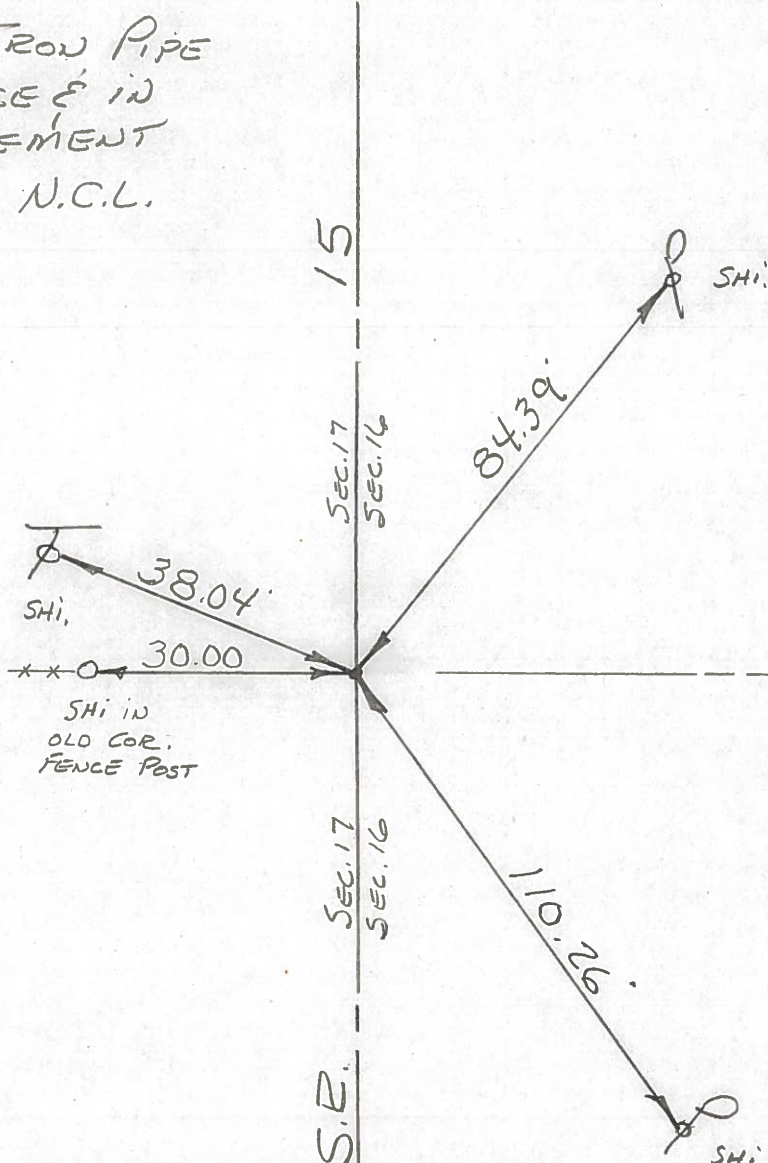


~~(41)~~  
(4)

FD. 1/2" IRON PIPE  
@ SURFACE & IN  
CTR. PAVEMENT  
PIONEER N.C.L.

E. & W. INTERIOR  
LINE SEC. 17

E. & W. INTERIOR  
LINE SEC. 16



PERSONNEL TITLE PERSONNEL TITLE

Red Beach  
Newcomb  
Knappe

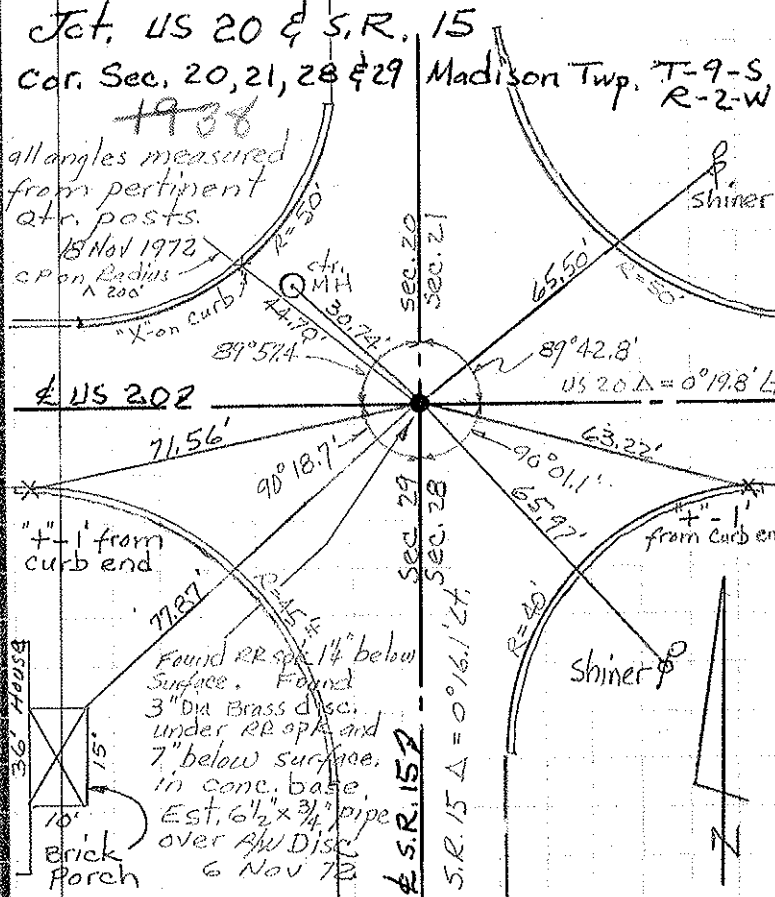
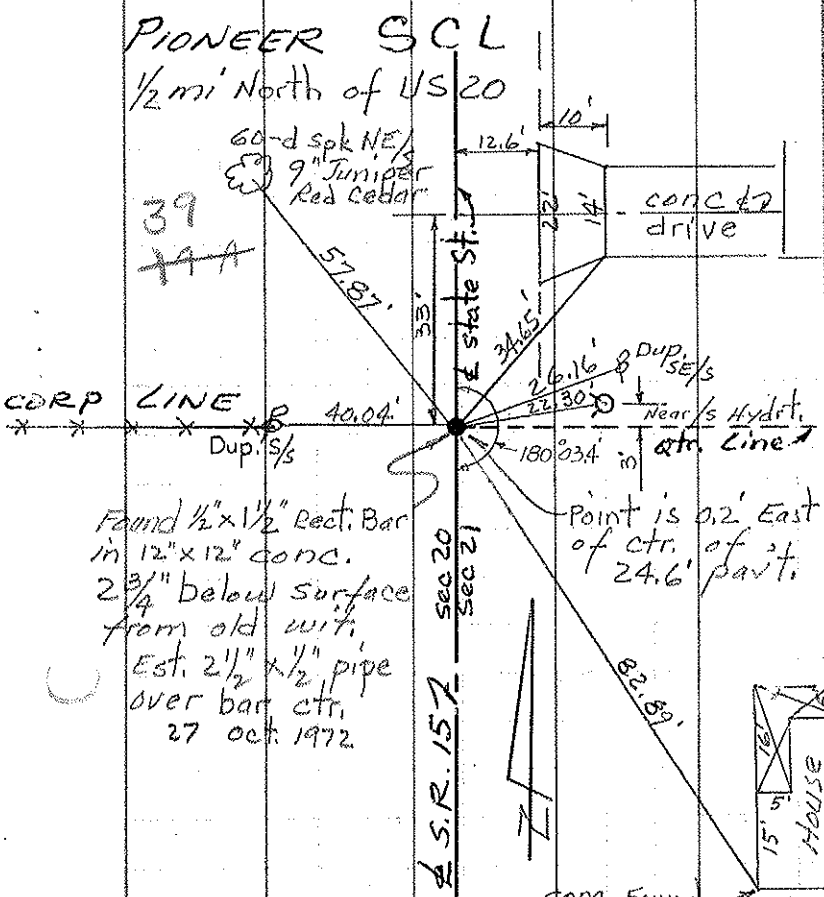
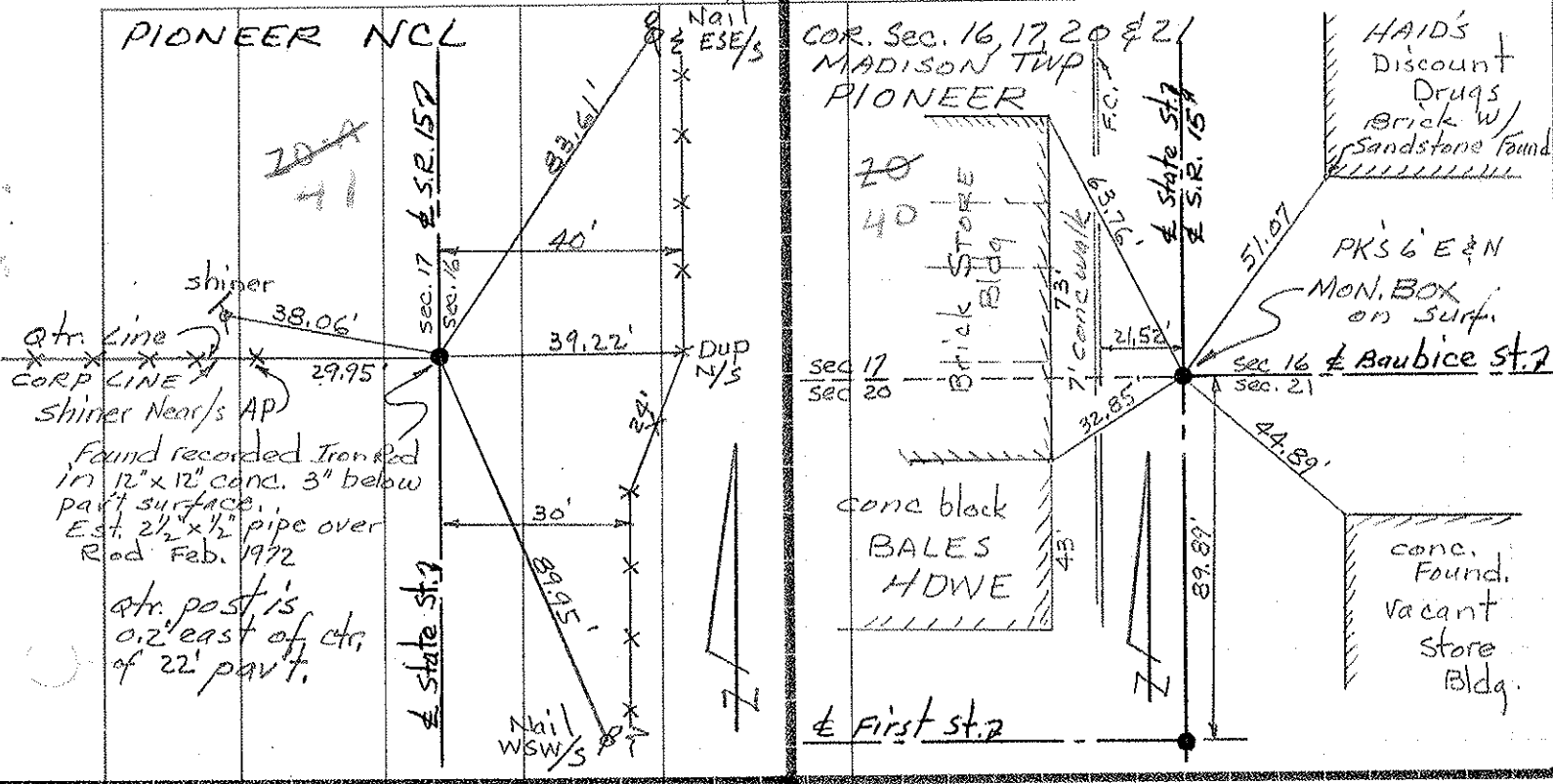
COUNTY Williams DATE Oct, 1972

S. R. 15 WEATHER \_\_\_\_\_

SEC. Madison Twp. TEMP. \_\_\_\_\_

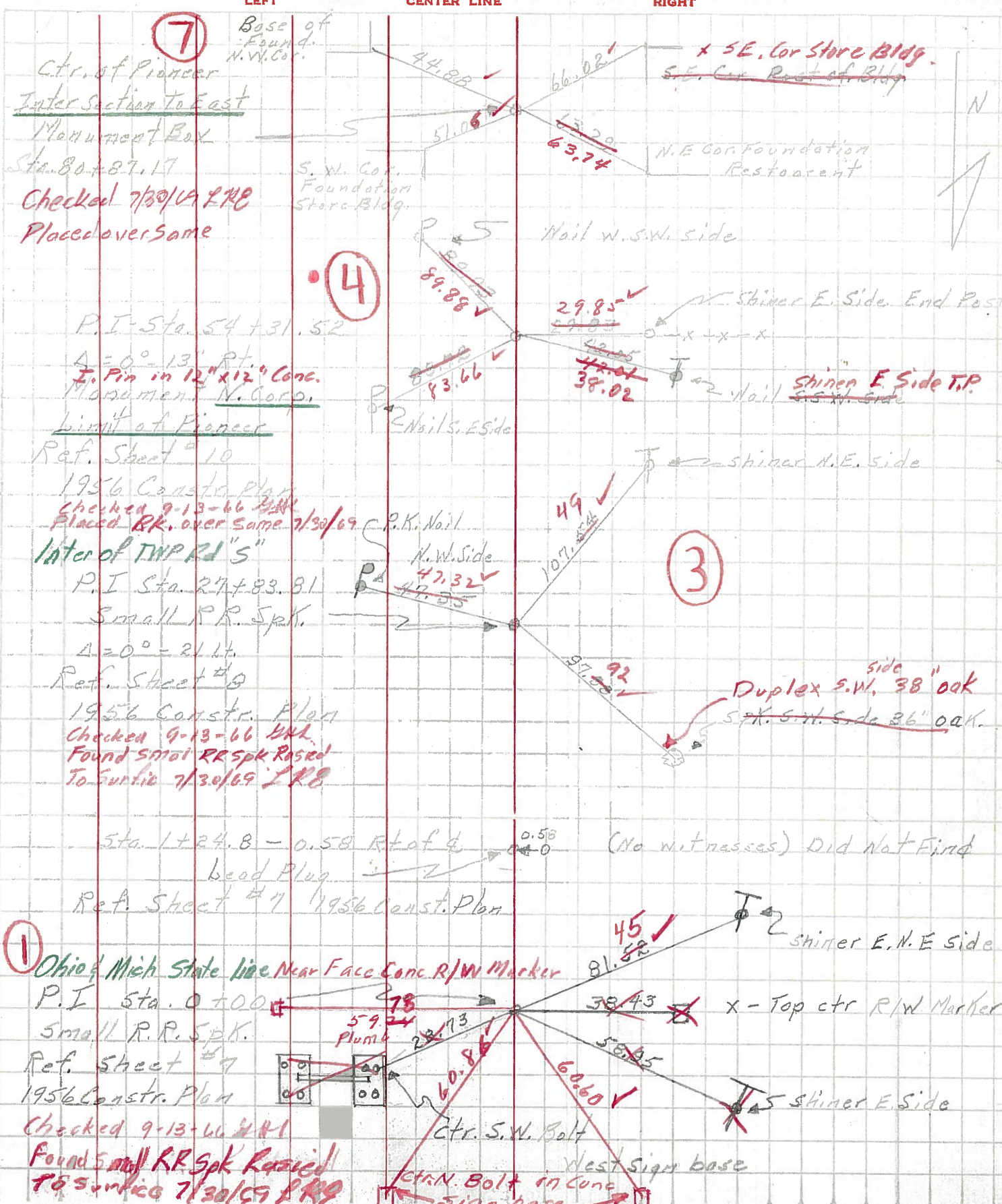
CONTROL POINTS

DESCRIPTION LEFT CENTER LINE RIGHT JOB NO.



PERSONNEL	TITLE	PERSONNEL	TITLE	COUNTY	DATE
Bowman				W.M.'s	3-4-64
Huff				#15	WEATHER Partly Cloudy
Barid				From Mich. line To Pt #20	TEMP 38° 75°

DESCRIPTION Re-Check of Control Points JOB NO. \_\_\_\_\_



**7**  
 Base of Found. N.W. Cor.  
 Ctr. of Pioneer  
 Inter Section to East  
 Monument Box  
 Sta. 80+87.17  
 Checked 7/30/69 LRB  
 Placed over Same

**4**  
 S.W. Cor. Foundation Store Bldg.  
 P.I. Sta. 54+31.52  
 $\Delta = 0^\circ - 13'$  Rt.  
 I. Pin in 12" x 12" Conc. Monument N. Corp.  
 Limit of Pioneer  
 Ref. Sheet # 10  
 1956 Constr. Plan  
 Checked 9-13-66 LRB  
 Placed RR. over same 7/30/69  
 later of TWP RD "S"  
 P.I. Sta. 27+83.81  
 Small R.R. Spk.  
 $\Delta = 0^\circ - 21'$  Lt.  
 Ref. Sheet # 9  
 1956 Constr. Plan  
 Checked 9-13-66 LRB  
 Found small RR Spk Razed To Surface 7/30/69 LRB

Sta. 1+24.8 - 0.58 Rt of d  
 bead Plug  
 Ref. Sheet # 7 1956 Const. Plan  
 (No witnesses) Did not Find

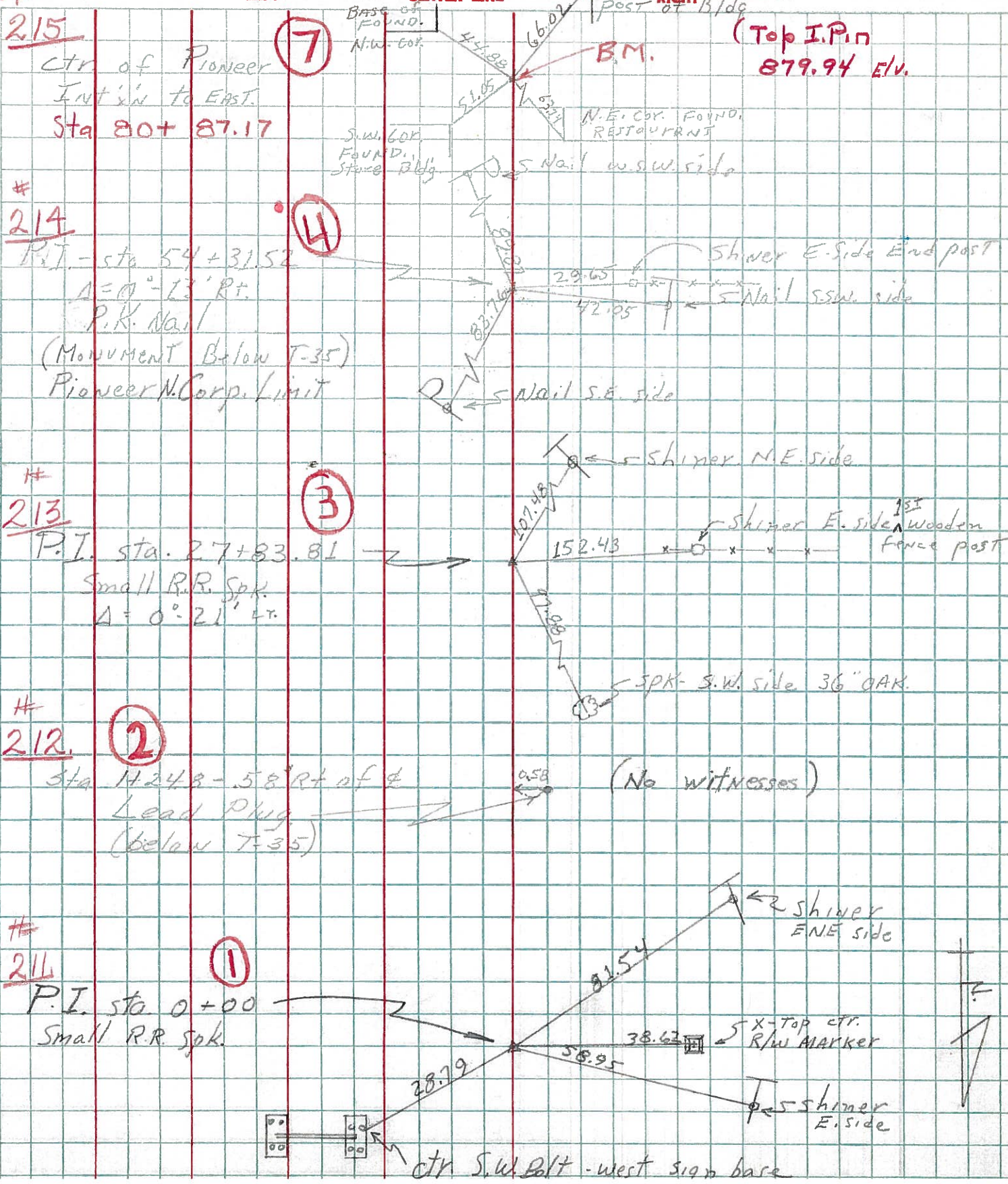
**1**  
 Ohio & Mich State line Near Face Conc. R/W Marker  
 P.I. Sta. 0+00  
 Small R.R. Spk.  
 Ref. Sheet # 7  
 1956 Constr. Plan  
 Checked 9-13-66 LRB  
 Found small RR Spk Razed To Surface 7/30/69 LRB  
 Ctr. S.W. Bolt  
 Ctr. N. Bolt in Conc  
 West Sign base  
 Shiner E. N.E. Side  
 X - Top ctr R/W Marker  
 Shiner E. Side

PERSONNEL TITLE PERSONNEL TITLE

Louys  
Persefall  
Wise  
Krohn

COUNTY Wi. DATE 7-22-58  
S. R. 15 WEATHER Cloudy  
From Mich. Line  
SEC. To Rt #20 TEMP. 75°

DESCRIPTION Re-check of Witnesses JOB NO. \_\_\_\_\_



6602



PERSONNEL TITLE PERSONNEL TITLE

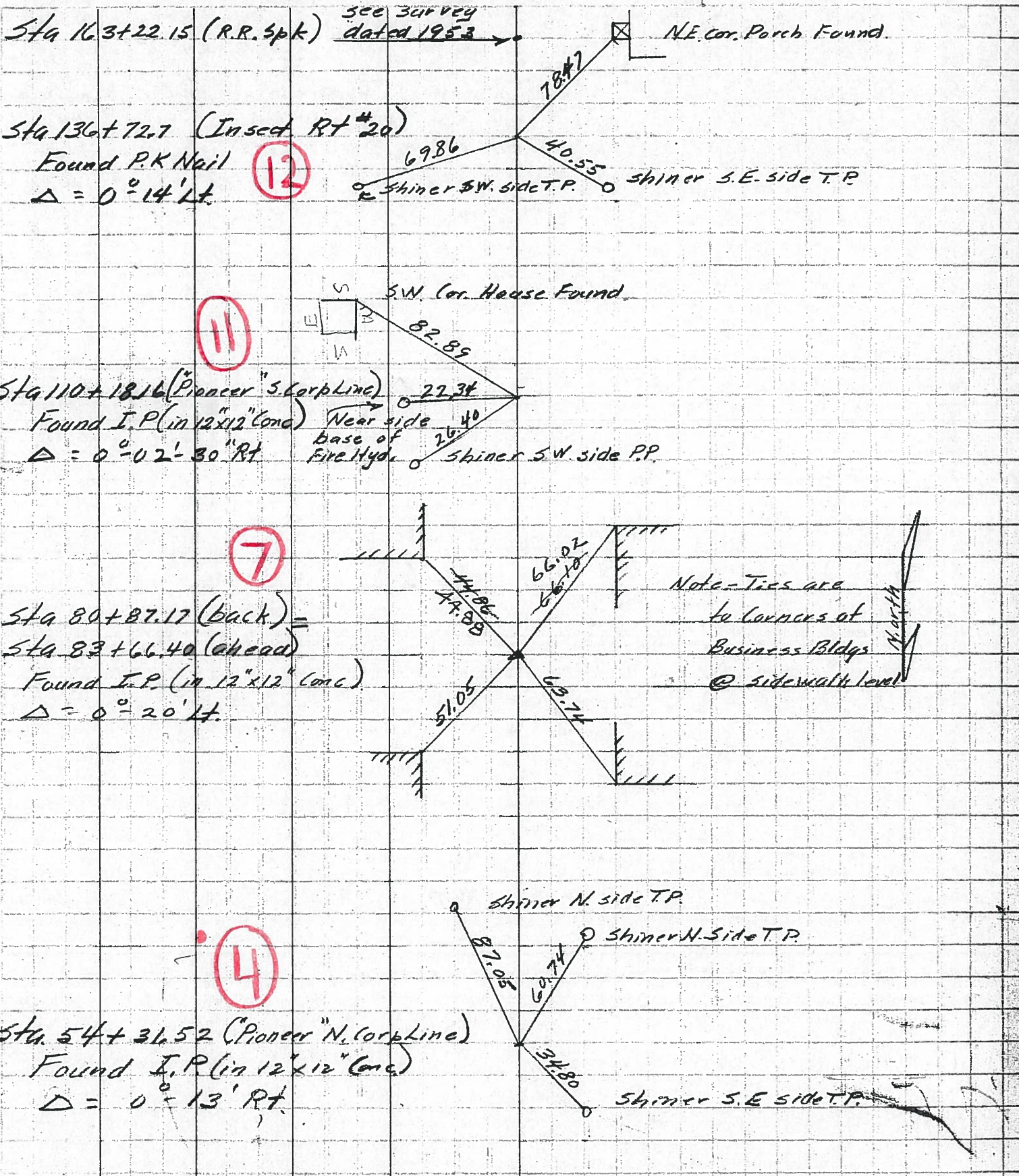
COUNTY W.I. DATE \_\_\_\_\_

S. R. 15 WEATHER \_\_\_\_\_

SEC. \_\_\_\_\_ TEMP. \_\_\_\_\_

DESCRIPTION Witnesses to Control Points JOB NO. \_\_\_\_\_

LEFT CENTER LINE RIGHT



Sta 163+22.15 (R.R. Spk)

see survey dated 1953

NE cor. Porch Found

Sta 136+72.7 (Inset Rt #20)

Found P.K Nail

$\Delta = 0^\circ 14' Lt.$

12

69.86 shiner SW side T.P. 40.55 shiner S.E. side T.P.

S.W. Cor. House Found

11

Sta 110+18.16 (Pioneer S. Corp Line)

Found I.P. (in 12"x12" conc)

$\Delta = 0^\circ 02' 30" Rt.$

22.34 Near side base of Fire Hydr. 26.40 shiner SW side P.P.

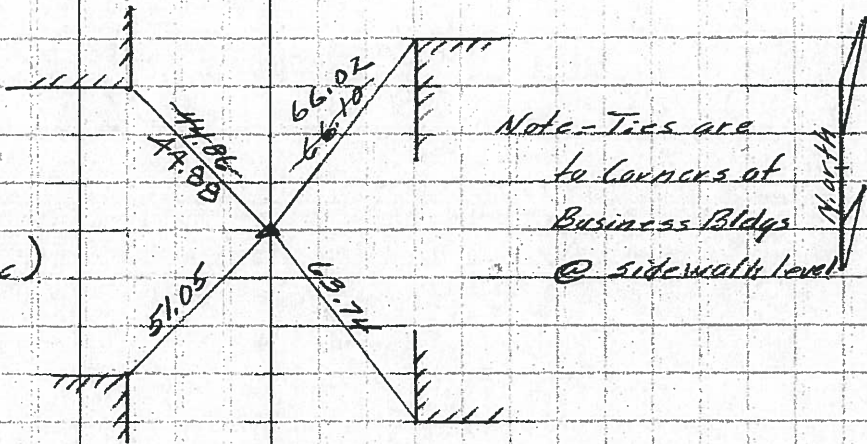
7

Sta 80+87.17 (back)

Sta 83+66.40 (ahead)

Found T.P. (in 12"x12" conc)

$\Delta = 0^\circ 20' Lt.$



4

Sta 54+31.52 (Pioneer N. Corp Line)

Found I.P. (in 12"x12" conc)

$\Delta = 0^\circ 13' Rt.$

81.05 shiner N. side T.P. 34.80 shiner S.E. side T.P.