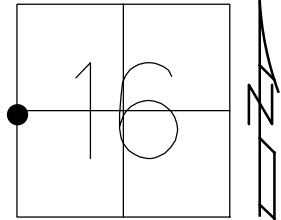


O.D.O.T. DISTRICT 2 SURVEY OFFICE (USE ONLY)

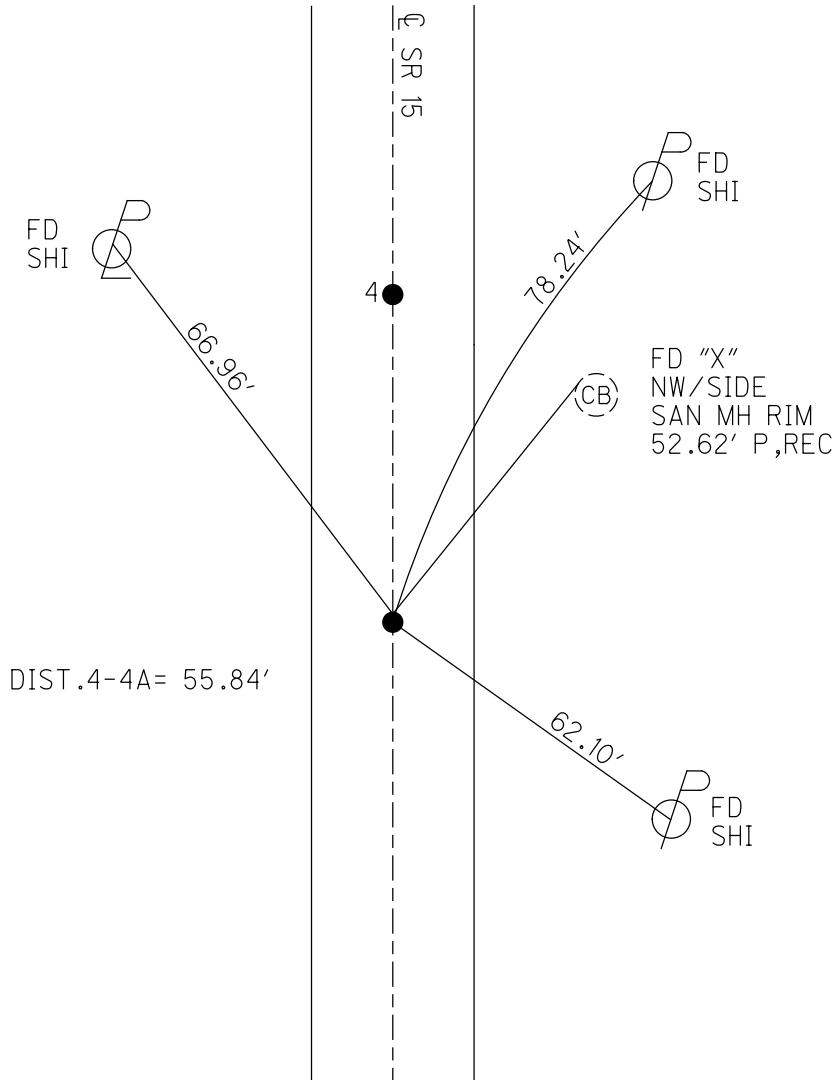
PERSONNEL \_\_\_\_\_ REFERENCE NO. 4 A SHEET 5 OF 40  
 NOTES ABNER DATE 10/18/21 ROUTE SR 15  
 H.C. AUBLE WEATHER CLEAR COUNTY WILLIAMS  
 R.C. ABNER TEMP. 55° TOWNSHIP MADISON  
 DWG BY RHOADES PID 95786 SECTION 16  
 T 9 S R 2 W

TYPE MONUMENT P.K./WASHER  
~~ON SURFACE~~ - BELOW 3"  
 OFFSET  $\varnothing$  PAVEMENT 0.3' ~~LT~~ : RT  
11.6' TO LT EDGE PAVEMENT  
 STATION: 54+86.85



HORZ.DATUM: NAD83 2011 GEOID: NAVD88 2012B  
 GRID: NORTHING: 742763.091 EASTING: 1407657.719

RECORD:  
 FD P.K./WASHER  
 8/31/88, MB  
 5/29/07, RGN  
 SET MAG/WASHER  
 8/28/07, RGN  
 FD P.K.NAIL  
 3" DOWN  
 REFA4  
 3/24/20, JLL  
 SET MAG/WASHER  
 9/19/22, DSA



O.D.O.T. DISTRICT 2 SURVEY OFFICE (USE ONLY)

PERSONNEL \_\_\_\_\_ REFERENCE NO. 4 A SHEET 5 OF 39

NOTES NUHFER \_\_\_\_\_ DATE 5/29/07 ROUTE SR 15  
 H.C. HUSS WEATHER SUNNY COUNTY WILLIAMS  
 R.C. HOUESHELL TEMP. 70° TOWNSHIP MADISON  
 \_\_\_\_\_ SECTION 16  
 \_\_\_\_\_ T 9 S R 2 W

TYPE MONUMENT P.K./WASHER

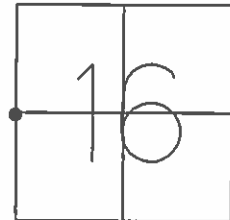
ON SURFACE - ~~BELOW~~ ON \_\_\_\_\_

LEFT - ☉ PAV'T - ~~RIGHT~~ 0.3' EAST

11.6' TOLT EDGE PAVEMENT

S.L.M. 54+88.84

GRID: NORTHING: 742763.092 EASTING: 1407657.707



FD PK/WASHER  
8-31-88 MB

SET MAG/WASHER  
8-28-07 RGN

SET N/S  
E-SIDE

66.96'

55.84'

4

☉ SR 15

78.25'

52.62'-P

SET N/S  
W-SIDE

FD. "X"  
NW-SIDE  
SAN. SEW.  
MH. RIM

62.04'

FD. N/S  
NW-SIDE

(CB)

# O.D.O.T. DISTRICT 2 SURVEY OFFICE

PERSONNEL \_\_\_\_\_

REFERENCE NO. 4

SHEET \_\_\_\_\_ OF \_\_\_\_\_

NOTES BARNHISEL

H.C. Loehrke

DATE 7-29-88

ROUTE 15

R.C. Reed

WEATHER SUNNY

COUNTY Williams

TEMP. +85°

TOWNSHIP Madison

SECTION 16

T 9 S R 2 W

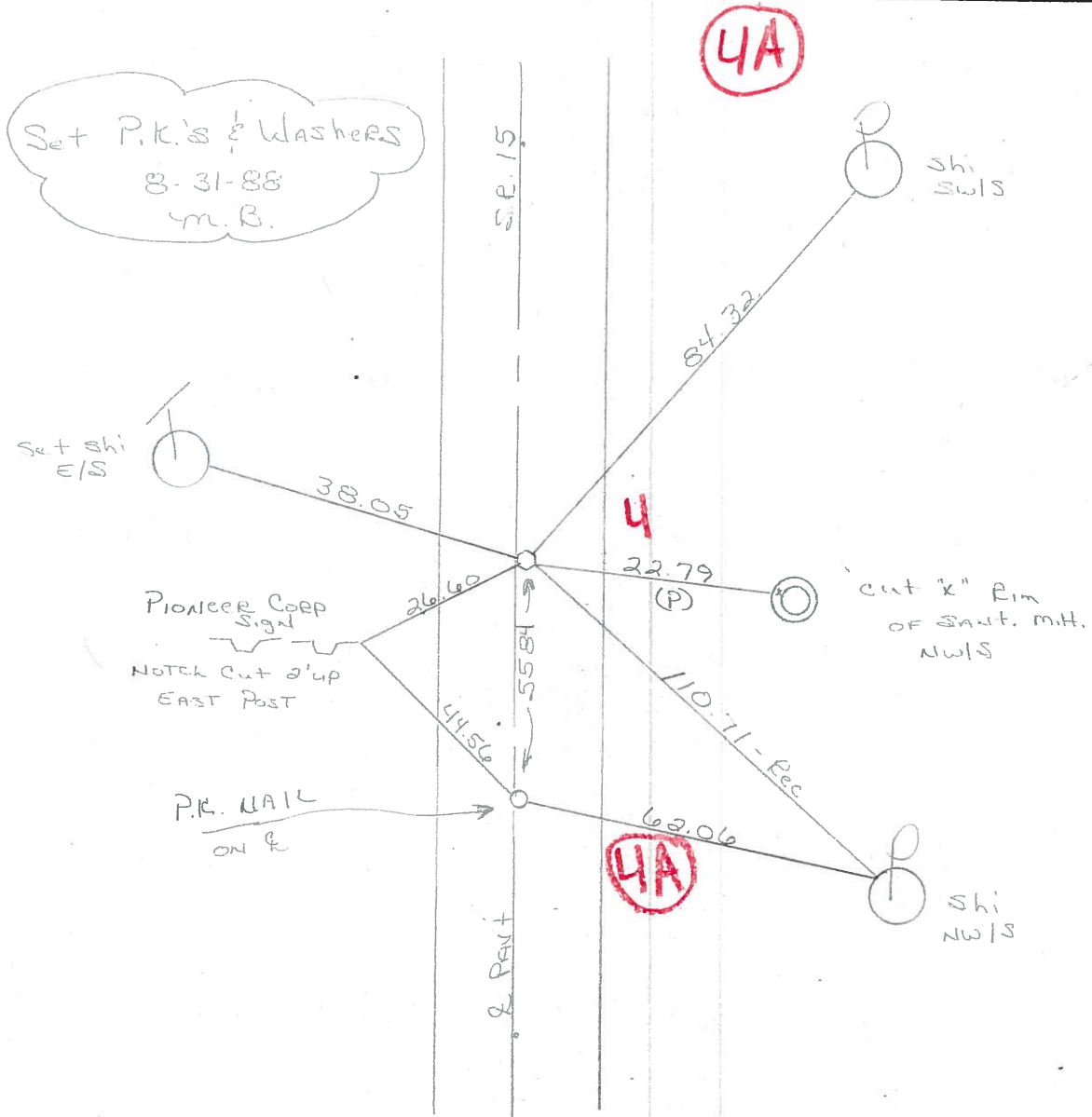
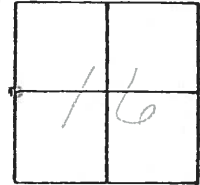
TYPE MONUMENT Sm RR Sdk

ON SURFACE - BELOW yes

LEFT- & PAV'T. - RIGHT 0.3

11.4 TO L EDGE PAVEMENT

S.L.M. 54+33



County WILLIAMS S.R. 15

Township MADISON

Section W 1/4 Post Sec. 16

T9B, R2E

Personnel HOFFMAN

LOEHRKE

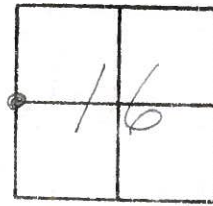
HOUSEHOLDER

# ~~4~~

Date 5-12-82

Weather CLEAR

Temp. +90°



FD. 1/2" IRON PIPE  
@ SURFACE & IN  
CTR. PAVEMENT

PIONEER N.C.L.

S.L.M. STA. 59432 ±

E&W. INTERIOR LINE  
SEC. 17

E&W. INTERIOR LINE  
SEC. 16

