

O.D.O.T. DISTRICT 2 SURVEY OFFICE (USE ONLY)

PERSONNEL

REFERENCE NO. 5 A

SHEET 7 OF 40

NOTES ABNER

DATE 10/18/21

ROUTE SR 15

H.C. AUBLE

WEATHER CLEAR

COUNTY WILLIAMS

R.C. ABNER

TEMP. 63°

TOWNSHIP MADISON

SECTION 16

DWG BY RHOADES

PID 95786

T 9 S R 2 W

TYPE MONUMENT MAG/WASHER

ON SURFACE - ~~BELOW~~ ON

OFFSET \odot PAVEMENT ON LT : RT

14.1' TO LT EDGE PAVEMENT

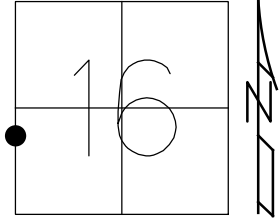
STATION: 57+85.03

HORZ.DATUM: NAD83 2011

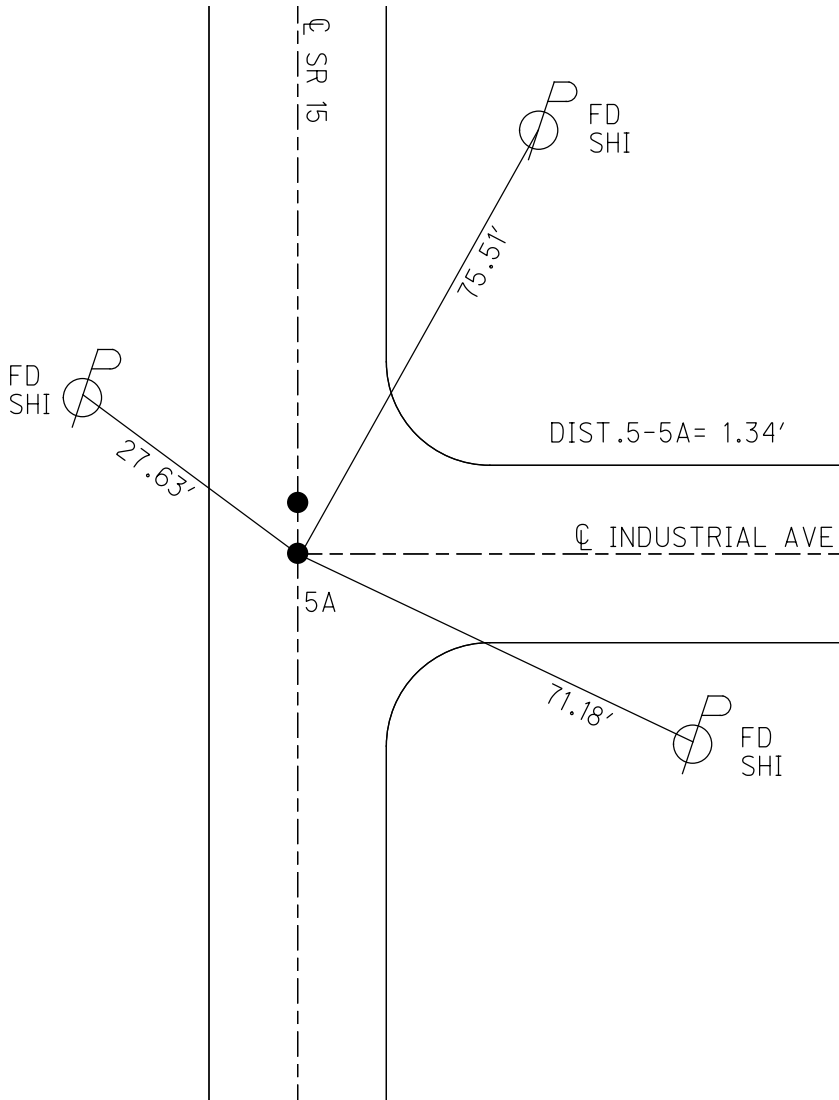
GEOID: NAVD88 2012B

GRID: NORTHING: 742465.028

EASTING: 1407649.247



RECORD:
 FD P.K./WASHER
 8/31/88, MB
 FD MAG NAIL
 5/29/07, RGN
 SET MAG/WASHER
 8/28/07, RGN
 FD MAG/WASHER
 REFA5
 3/24/20, JLL
 SET MAG/WASHER
 9/19/22, DSA



O.D.O.T. DISTRICT 2 SURVEY OFFICE (USE ONLY)

PERSONNEL _____ REFERENCE NO. 5 A SHEET 7 OF 39

NOTES NUHFER _____ DATE 5/29/07 ROUTE SR 15
 H.C. HUSS _____ WEATHER SUNNY COUNTY WILLIAMS
 R.C. HOUESHELL _____ TEMP. 74° TOWNSHIP MADISON
 _____ SECTION 16
 _____ T 9 S R 2 W

TYPE MONUMENT _____ MAG NAIL _____

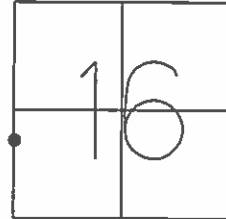
ON SURFACE - ~~BELOW~~ _____ ON _____

~~LEFT~~ - ☉ PAV'T - ~~RIGHT~~ _____ ON _____

14.1' TO LT EDGE PAVEMENT

S.L.M. 57+86.33

GRID: NORTHING: 742465.094 EASTING: 1407649.199



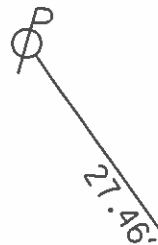
FD PK/WASHER
8-31-88 MB

SET MAG/W
8-28-07 RGN

SET N/S
SE-SIDE

NOTE: ON ☉ IND. AVE
ORIGIN UNKNOWN

5 TO 5A= 1.33'



FD.N/S
SW-SIDE

☉ INDUSTRIAL AVE
CONCRETE

FD."X" IN
CURB 5'
FROM END

SET N/S
W-SIDE