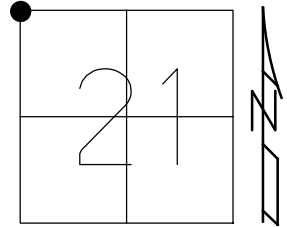


O.D.O.T. DISTRICT 2 SURVEY OFFICE (USE ONLY)

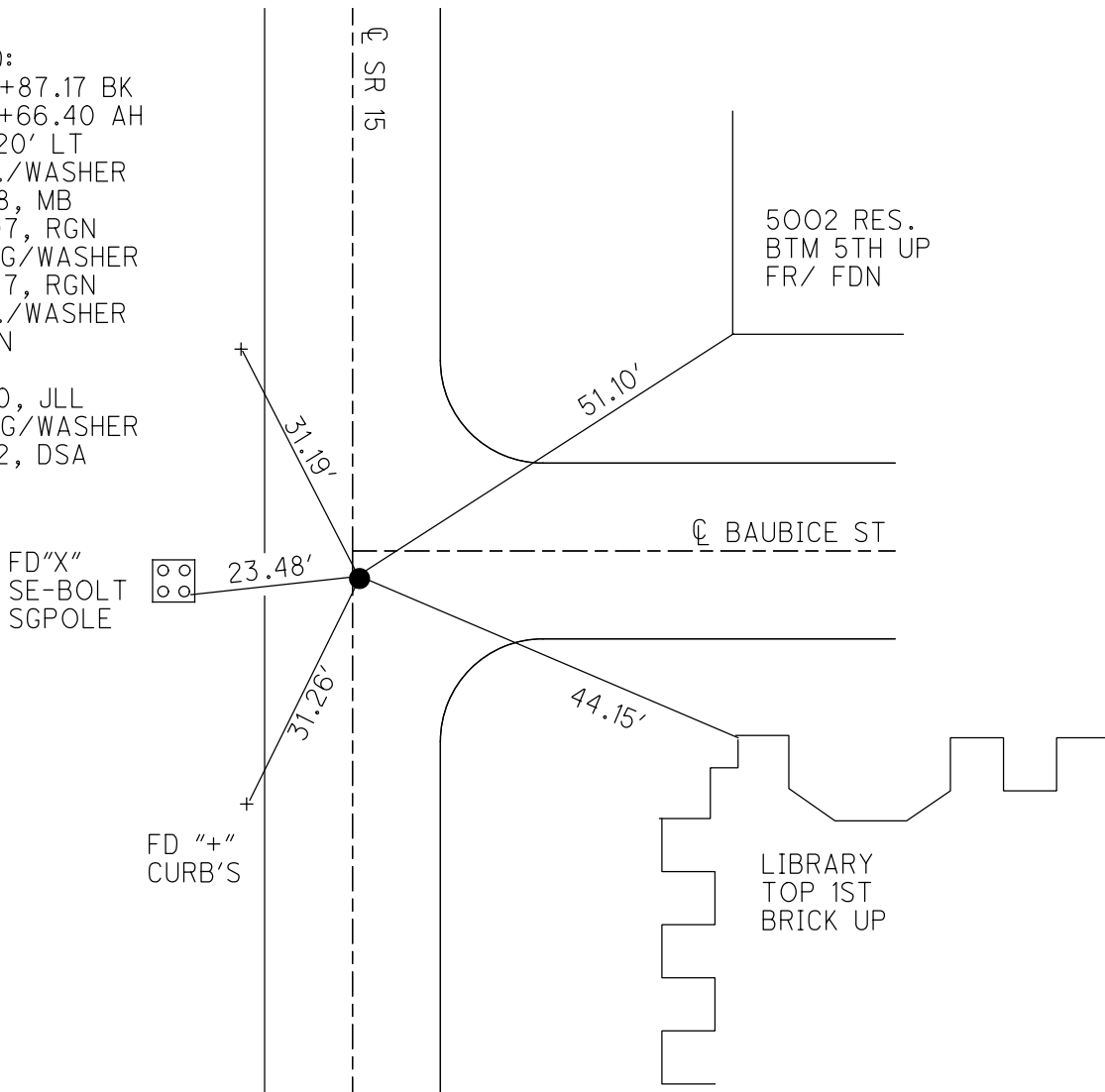
PERSONNEL _____ REFERENCE NO. 7 SHEET 9 OF 40
 NOTES ABNER DATE 10/19/21 ROUTE SR 15
 H.C. AUBLE WEATHER SUNNY COUNTY WILLIAMS
 R.C. ABNER TEMP. 55° TOWNSHIP MADISON
 DWG BY RHOADES PID 95786 SECTION 21
 T 9 S R 2 W

TYPE MONUMENT P.K./WASHER
~~ON SURFACE~~ - BELOW 2"
 OFFSET ϕ PAVEMENT 1.5' LT : RT
21.6' TO RT EDGE PAVEMENT
 STATION: 80+86.68



HORIZ.DATUM: NAD83 2011 GEOID: NAVD88 2012B
 GRID: NORTHING: 740164.281 EASTING: 1407584.783

RECORD:
 STA.80+87.17 BK
 STA.83+66.40 AH
 $\Delta = 0^\circ 20'$ LT
 FD P.K./WASHER
 8/31/88, MB
 5/29/07, RGN
 SET MAG/WASHER
 8/28/07, RGN
 FD P.K./WASHER
 2" DOWN
 REF7
 5/13/20, JLL
 SET MAG/WASHER
 9/19/22, DSA



O.D.O.T. DISTRICT 2 SURVEY OFFICE (USE ONLY)

PERSONNEL _____ REFERENCE NO. 7 SHEET 9 OF 39
 NOTES NUHFER _____ DATE 5/29/07 ROUTE SR 15
 H.C. HUSS _____ WEATHER SUNNY COUNTY WILLIAMS
 R.C. HOUESHELL _____ TEMP. 74° TOWNSHIP MADISON
 _____ SECTION 21
 T 9 S R 2 W

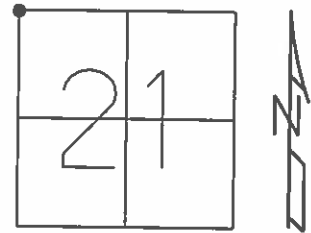
TYPE MONUMENT _____ P.K./WASHER _____

ON SURFACE - ~~BELOW~~ _____ ON _____

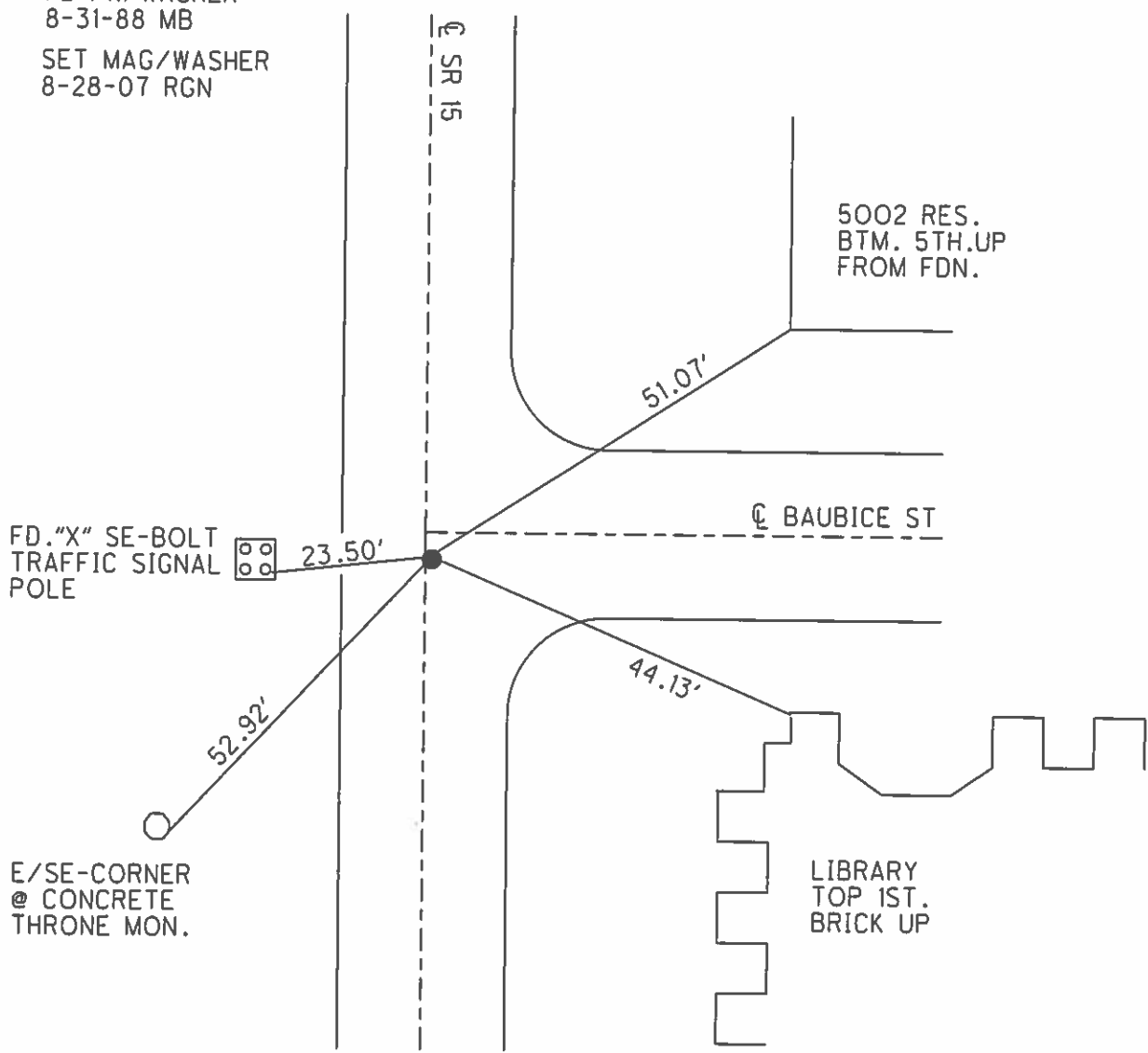
LEFT - ☉ PAV'T - ~~RIGHT~~ 0.7' WEST, 3.5' S.☉ BAUBICE ST
21.6' TO RT EDGE CURB

S.L.M. 80+89

GRID: NORTHING: 740164.283 EASTING: 1407584.753



FD PK/WASHER
8-31-88 MB
 SET MAG/WASHER
8-28-07 RGN



O.D.O.T. DISTRICT 2 SURVEY OFFICE

PERSONNEL

REFERENCE NO. 7

SHEET OF

NOTES BARNHISEL

H.C. Loehrke

R.C. Reed

DATE 7-29-88

WEATHER Sunny

TEMP. +85°

ROUTE 15

COUNTY Williams

TOWNSHIP Madison

SECTION 21

T. 9 S. R. 2 W.

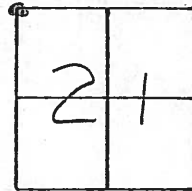
TYPE MONUMENT P.K. & Washer

ON SURFACE - ~~BELOW~~ yes

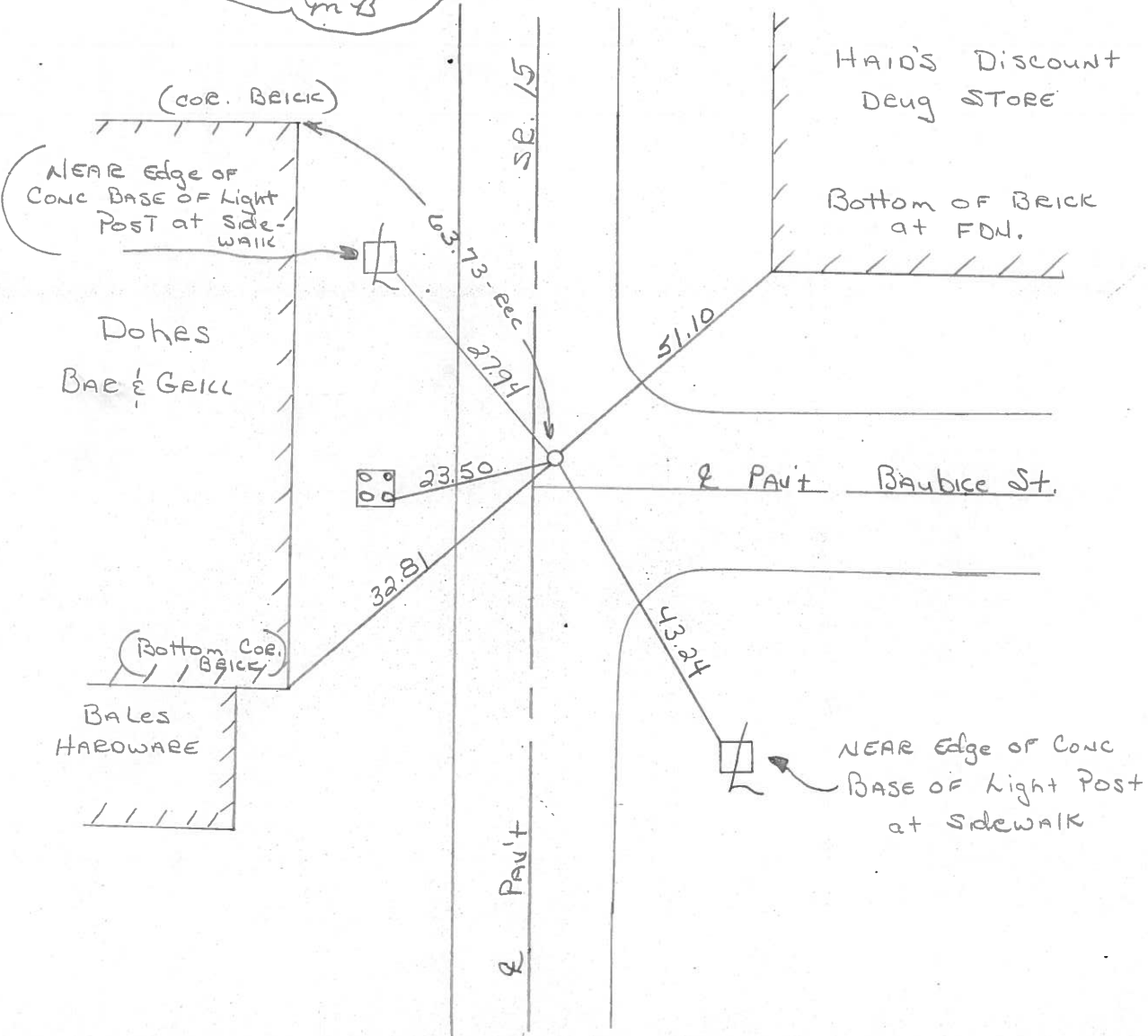
LEFT- & PAV'T. - ~~RIGHT~~ 1.5

21.6 TO E+ EDGE PAVEMENT

S.L.M. 80+89 curbing



Set P.K. & Washer
8-31-88
yrb



County WILLIAMS S.R. 15

Township MADISON

Section N.W. COR. SEC. 21

~~T9~~, ~~R2~~

Personnel HOFFMAN

LOEHRKE

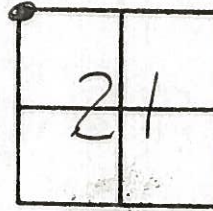
HOUSEHOLDER

#40 (7)

Date 5-12-82

Weather CLEAR

Temp. +90°



FD. P.K. NAIL @ SURFACE
OVER MON. BOX.

S.L.M. STA. = 80+87 ±

SET P.K. / WASHER
8-10-82
SWH

(COR. BRICK)

DOHES
BAR & GRILL

SEC. 17
SEC. 20

TOP S.E. BOLT
TRAFFIC LIGHT
POLE BASE

23.49'

(COR. BRICK)

BALES
HARDWARE

CONC. BCK.

1st FIRST ST.

S.R.

51.13'

HAID'S DISCOUNT
DRUG STORE

BRICK WITH
SANDSTONE FDN.

(BOTTOM BRICK)

SEC. 16
SEC. 21

2nd BAUBICE ST.

44.90'

COR. CONC. FDN.

ANN FURNITURE
OUTLET

89.89'

15'

County WILLIAMS S.R. 15

Date 5-12-82

Township MADISON

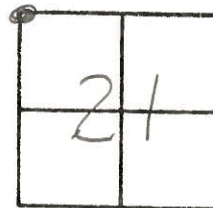
Weather CLEAR

Section N.W. COR. SEC. 21

Temp. +90°

~~T9N~~, ~~R2E~~

Personnel HOFFMAN



#40 (7)

LOEHRKE

HOUSEHOLDER

FD, P.K. NAIL @ SURFACE
OVER MON. BOX.

S.L.M. STA. = 80 + 87 ±

SET P.K. & WASHER
8-10-82
S.W.H.

(COR. BRICK)

DOHRS
BAR & GRILL

SEC. 17
SEC. 20

TOP S.E. BOLT
TRAFFIC LIGHT
POLE BASE.

23.49'

SEC. 16
SEC. 21

BAUBICE ST.

(COR. BRICK)

BALES
HARDWARE

CONC. BLK.

32.81'

89.89'

FIRST ST.

S.R.

HAID'S DISCOUNT
DRUG STORE

BRICK WITH
SANDSTONE FDN.

(BOTTOM BRICK)

51.13'

44.90'

COR. CONC. FDN.

ANN FURNITURE
OUTLET

County WILLIAMS S.R. 15

Date 11-30-79

Township MADISON

Weather CLEAR

Section N.W. COR. SEC. 21

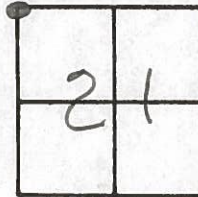
Temp. +26°

~~T9N~~, ~~R2E~~

Personnel BURNSIDE

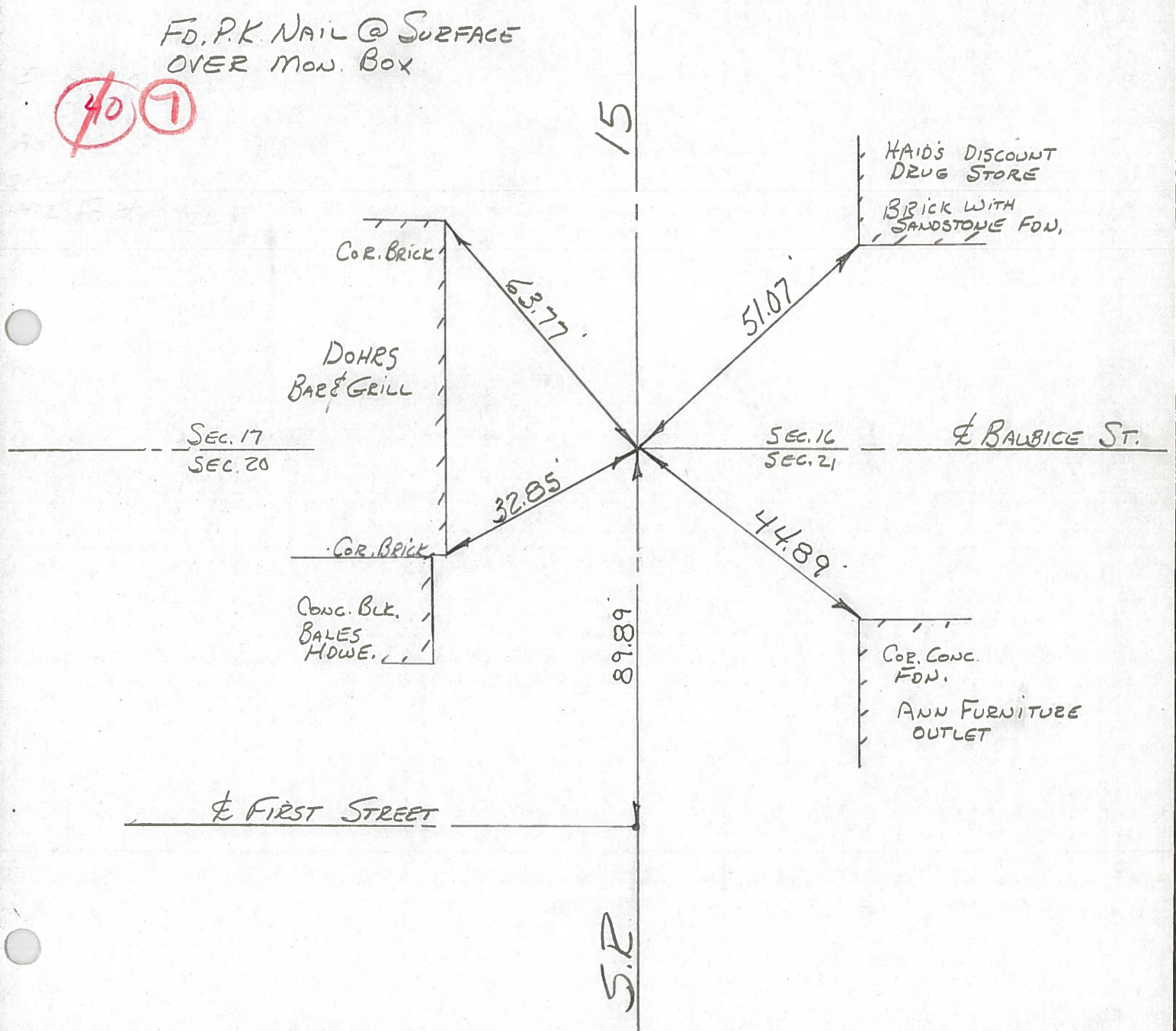
SMITH

MEAD



FD. P.K NAIL @ SURFACE
OVER MON. BOX

~~40~~ ~~7~~

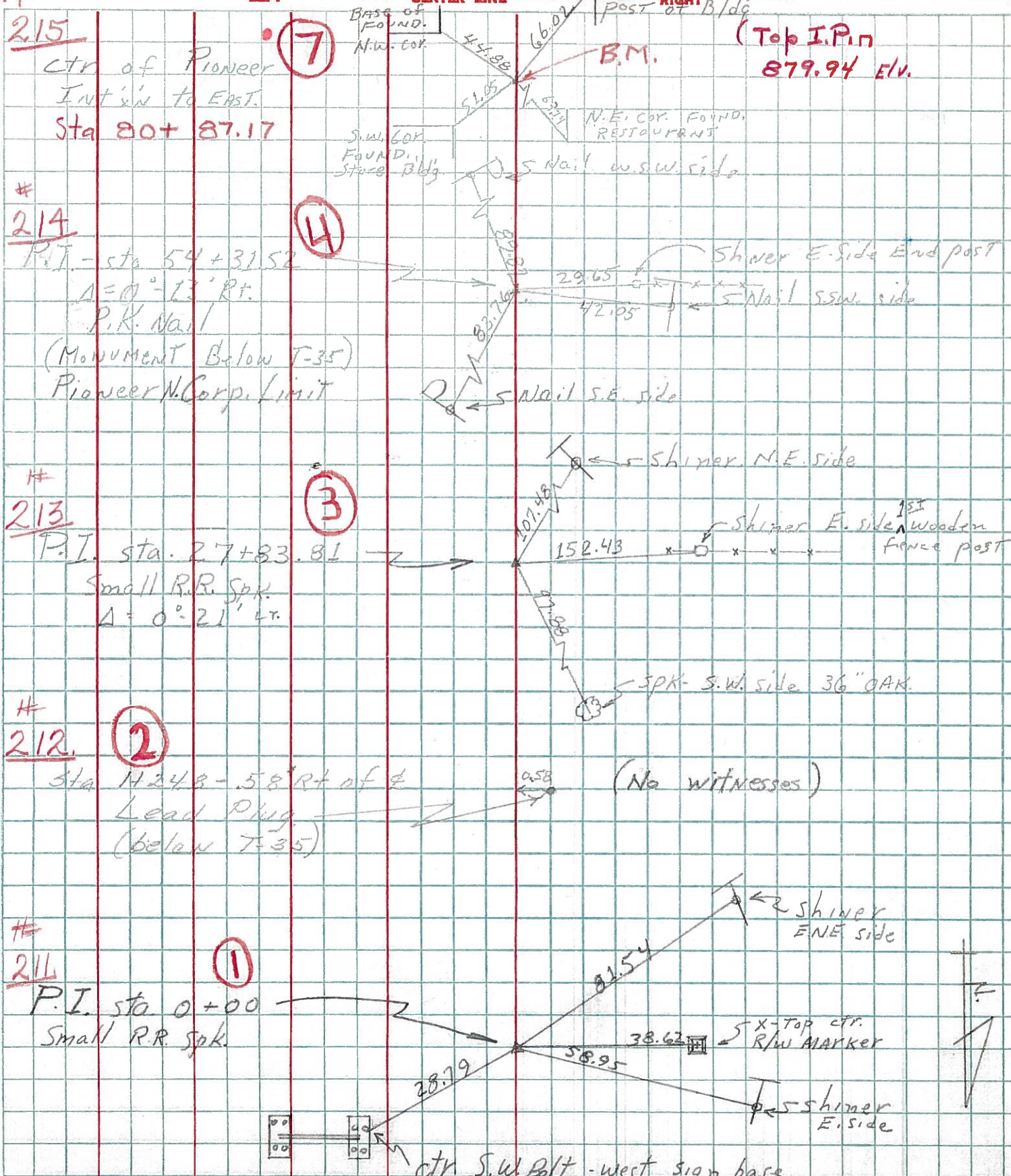


PERSONNEL TITLE PERSONNEL TITLE

Louys
Persefall
Wise
Krahn

COUNTY Wi. DATE 7-22-58
S. R. 15 WEATHER Cloudy
From Mich. Line
SEC. To Rt #20 TEMP. 75°

DESCRIPTION Re-check of Witnesses JOB NO. _____



6602

PERSONNEL TITLE PERSONNEL TITLE

COUNTY Wi. DATE _____

S. R. 15 WEATHER _____

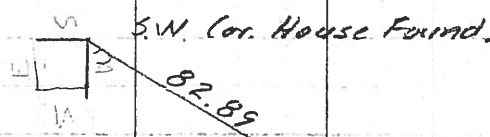
SEC. _____ TEMP. _____

DESCRIPTION Witnesses to Control Points JOB NO. _____

LEFT CENTER LINE RIGHT

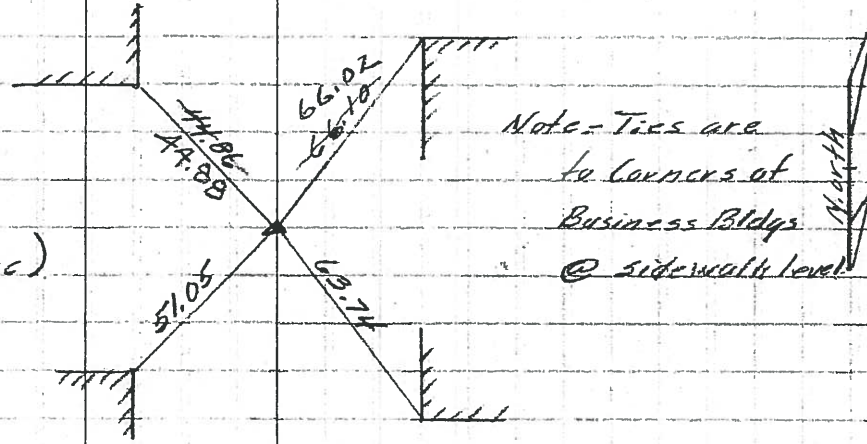
Sta 163+22.15 (R.R. Spk) ^{see survey dated 1953} NE. cor. Porch Found.

Sta 136+72.7 (Insect Rt #20)
Found P.K Nail **(12)**
 $\Delta = 0^{\circ} 14' Lt.$
Shiner SW. side T.P. Shiner S.E. side T.P.



Sta 110+18.16 (Pioneer S. Corp Line)
Found I.P. (in 12"x12" conc) **(11)**
 $\Delta = 0^{\circ} 02' 30" Rt.$
Near side base of Fire Hydr. Shiner SW. side P.P.

Sta 80+87.17 (back) = Sta 83+66.40 (ahead)
Found I.P. (in 12"x12" conc) **(7)**
 $\Delta = 0^{\circ} 20' Lt.$
Note - Ties are to corners of Business Bldgs @ sidewalk level



Sta. 54+36.52 (Pioneer N. Corp Line)
Found I.P. (in 12"x12" conc) **(4)**
 $\Delta = 0^{\circ} 13' Rt.$
Shiner N. side T.P. Shiner N. Side T.P. Shiner S.E. side T.P.

