

O.D.O.T. DISTRICT 2 SURVEY OFFICE (USE ONLY)

PERSONNEL

REFERENCE NO. 9

SHEET 11 OF 40

NOTES BARNHISEL

DATE 8/4/88

ROUTE SR 15

H.C. LOEHRKE

WEATHER SUNNY

COUNTY WILLIAMS

R.C. REED

TEMP. 95°

TOWNSHIP MADISON

DWG BY RHOADES

PID 95786

SECTION 21

T 9 S R 2 W

TYPE MONUMENT P.K./WASHER

ON SURFACE - ~~BELOW~~ ON

OFFSET \varnothing PAVEMENT ON LT : RT

- TO - EDGE PAVEMENT

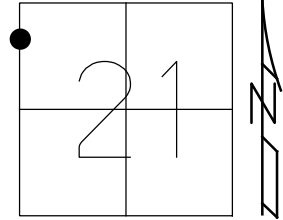
STATION: 89+36

HORIZ.DATUM: -

GEOID: -

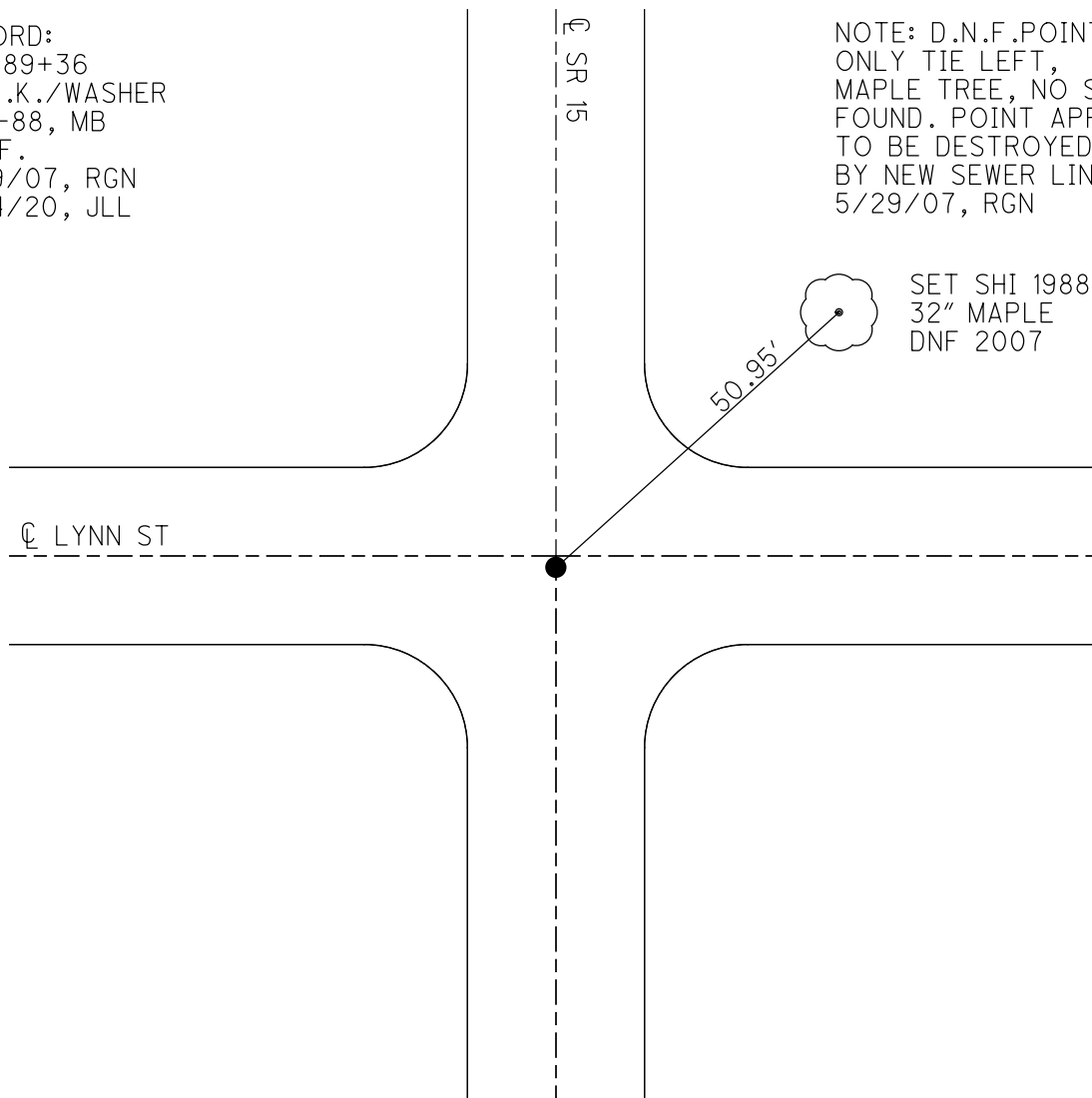
GRID: NORTHING: -

EASTING: -



RECORD:
STA.89+36
FD P.K./WASHER
8-31-88, MB
D.N.F.
5/29/07, RGN
3/24/20, JLL

NOTE: D.N.F.POINT
ONLY TIE LEFT,
MAPLE TREE, NO SHI
FOUND. POINT APPEARS
TO BE DESTROYED
BY NEW SEWER LINE.
5/29/07, RGN

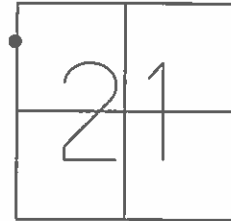


SET SHI 1988
32" MAPLE
DNF 2007

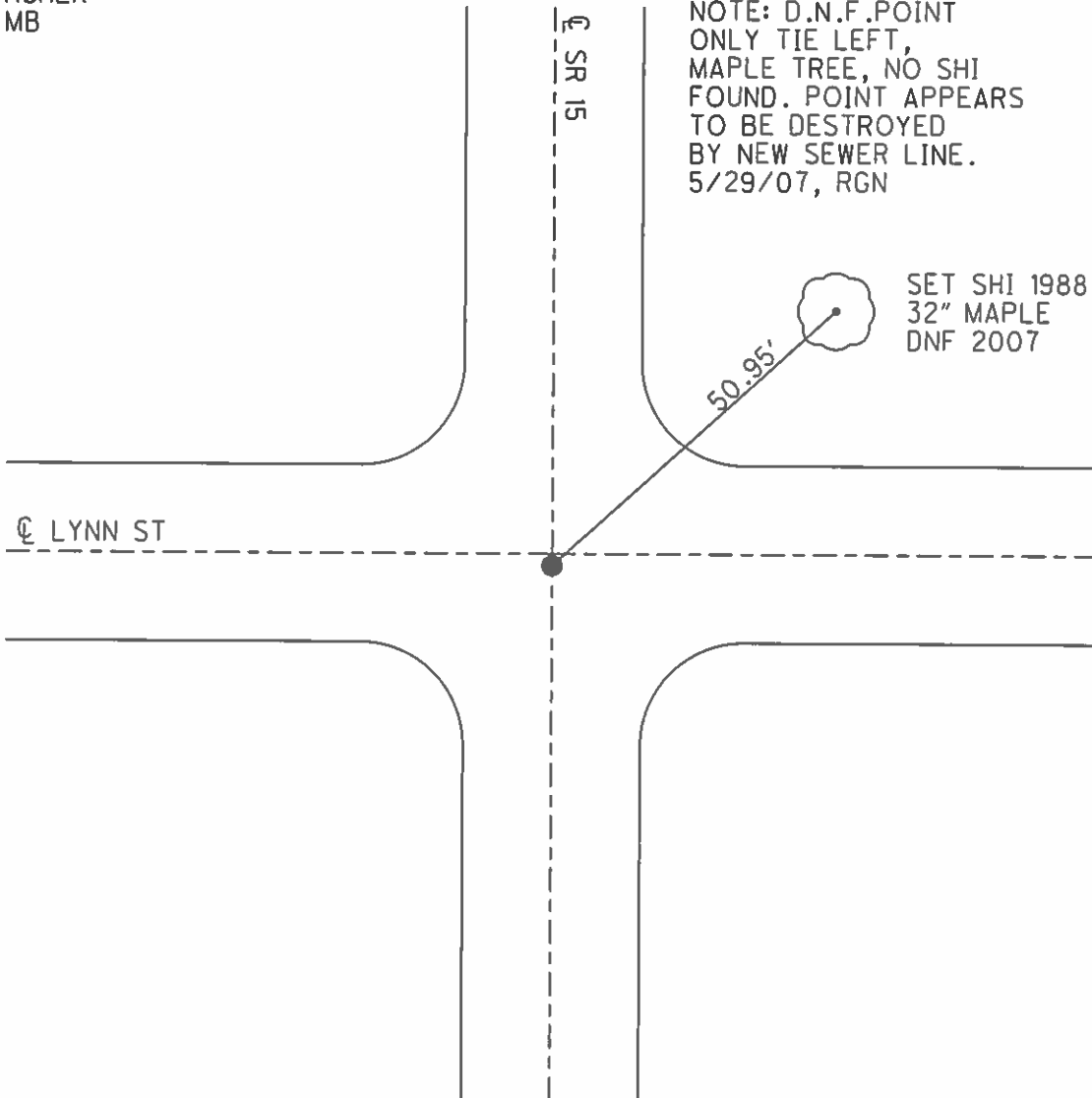
O.D.O.T. DISTRICT 2 SURVEY OFFICE (USE ONLY)

PERSONNEL _____ REFERENCE NO. 9 SHEET 11 OF 39
NOTES BARNHISEL DATE 8/4/88 ROUTE SR 15
H.C. LOEHRKE WEATHER SUNNY COUNTY WILLIAMS
R.C. REED TEMP. 95° TOWNSHIP MADISON
SECTION 21
T 9 S R 2 W

TYPE MONUMENT P.K./WASHER
ON SURFACE - BELOW ON
LEFT - ☉ PAV'T - RIGHT ON, 1' S. ☉ WEST
- TO - EDGE PAVEMENT
S.L.M. 89+36
GRID: NORTHING: - EASTING: -



FD PK/WASHER
8-31-88 MB



O.D.O.T. DISTRICT 2 SURVEY OFFICE

PERSONNEL _____

REFERENCE NO. 9

SHEET _____ OF _____

NOTES BARNHISEL

H.C. Loehcke

DATE 8-4-88

ROUTE 15

R.C. Reed

WEATHER SUNNY

COUNTY Williams

TEMP. +95°

TOWNSHIP Madison

SECTION 21

T 9 S 2 R 2 W

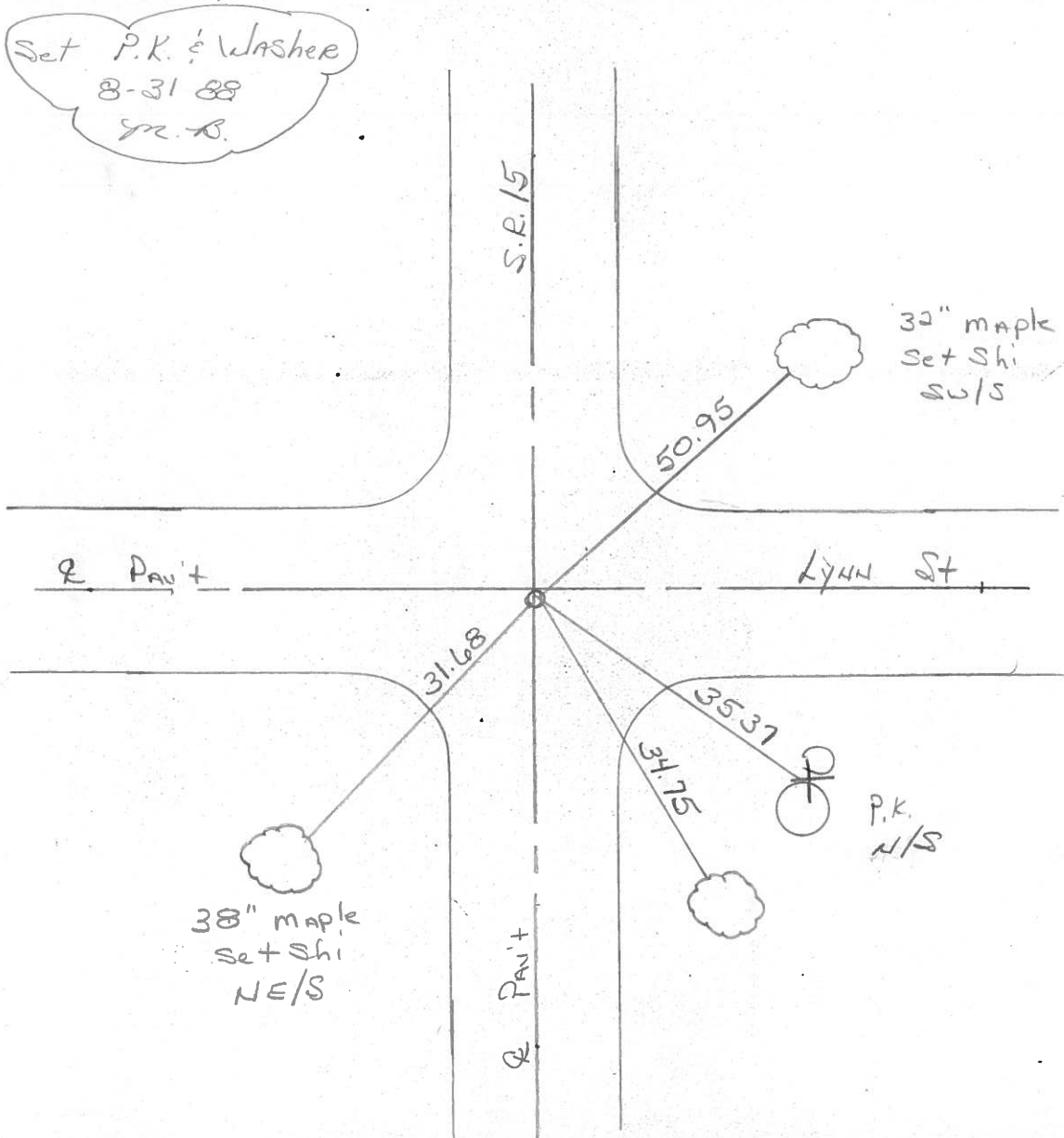
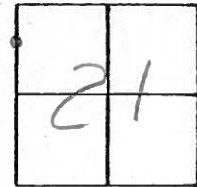
TYPE MONUMENT P.K. & Washer

ON SURFACE - ~~BELOW~~ yes

~~LEFT - & PAV'T. - RIGHT~~ yes

~~TO -~~ EDGE PAVEMENT 1' sof & west

S.L.M. 89+36



OD.O.T. DISTRICT 2 SURVEY OFFICE

SHEET 8 OF

County Williams S.R. 15

Date 5-13-82

Township Madison

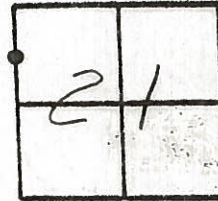
Weather clear

Section 21

Temp. +70°

T19³W, R2^WE

Personnel Hoffman



9

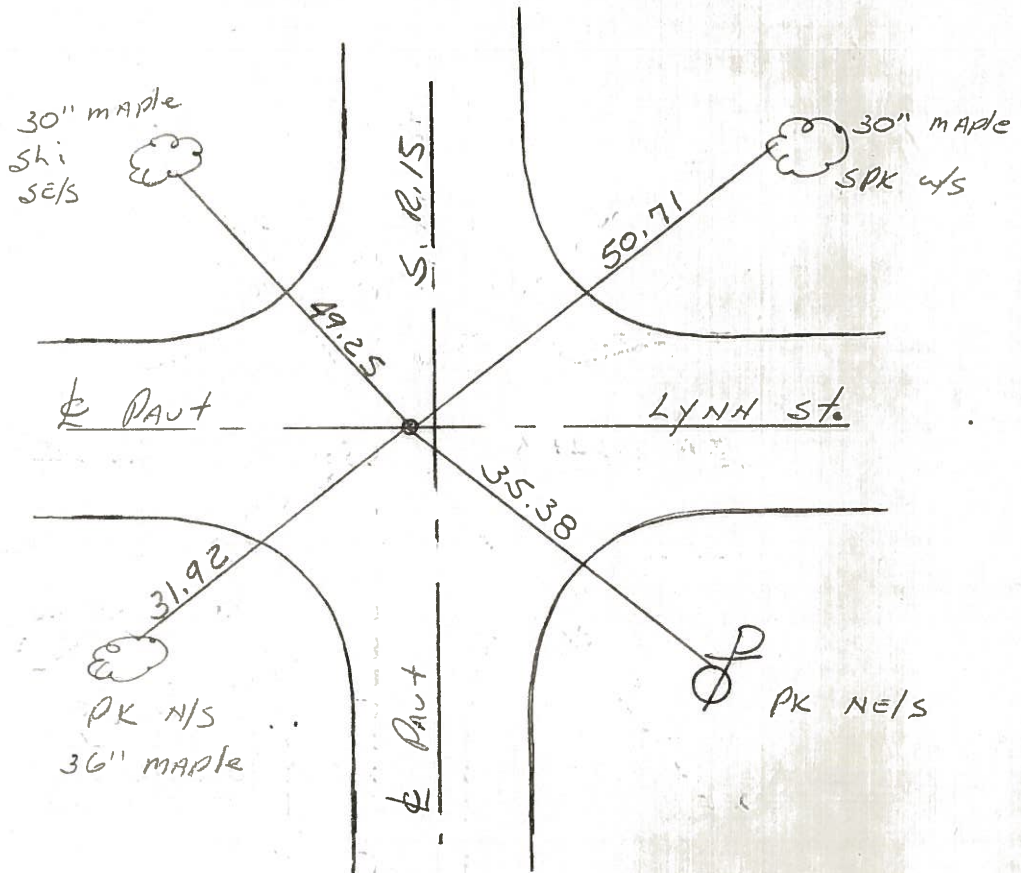
Crew

Fd nail & shiner @ surface source UNKNOWN SKM Sta ± 89+32

0.2' Rt of & part

Set PK/WASHER
8-10-82
SWH

1.0' S. of LYNN St West & part



ODOT DISTRICT 2 SURVEY OFFICE

SHEET 8 OF

County Williams S.R. 15

Date 5-13-82

Township Madison

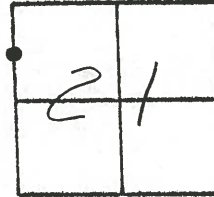
Weather clear

Section 21

Temp. +70°

T³₉, R^W₂^E

Personnel Hoffman



9

Crew

Fd nail & shiner @ surface source UNKNOWN

SKM Sta ± 89+32

0.2' Rt of & part

1.0' S. of Lynn St West & part

SET P.K. & WASHER
8-10-82
S.W.H.

