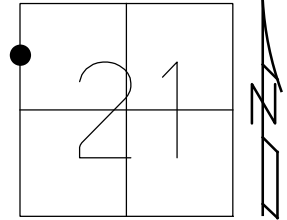


O.D.O.T. DISTRICT 2 SURVEY OFFICE (USE ONLY)

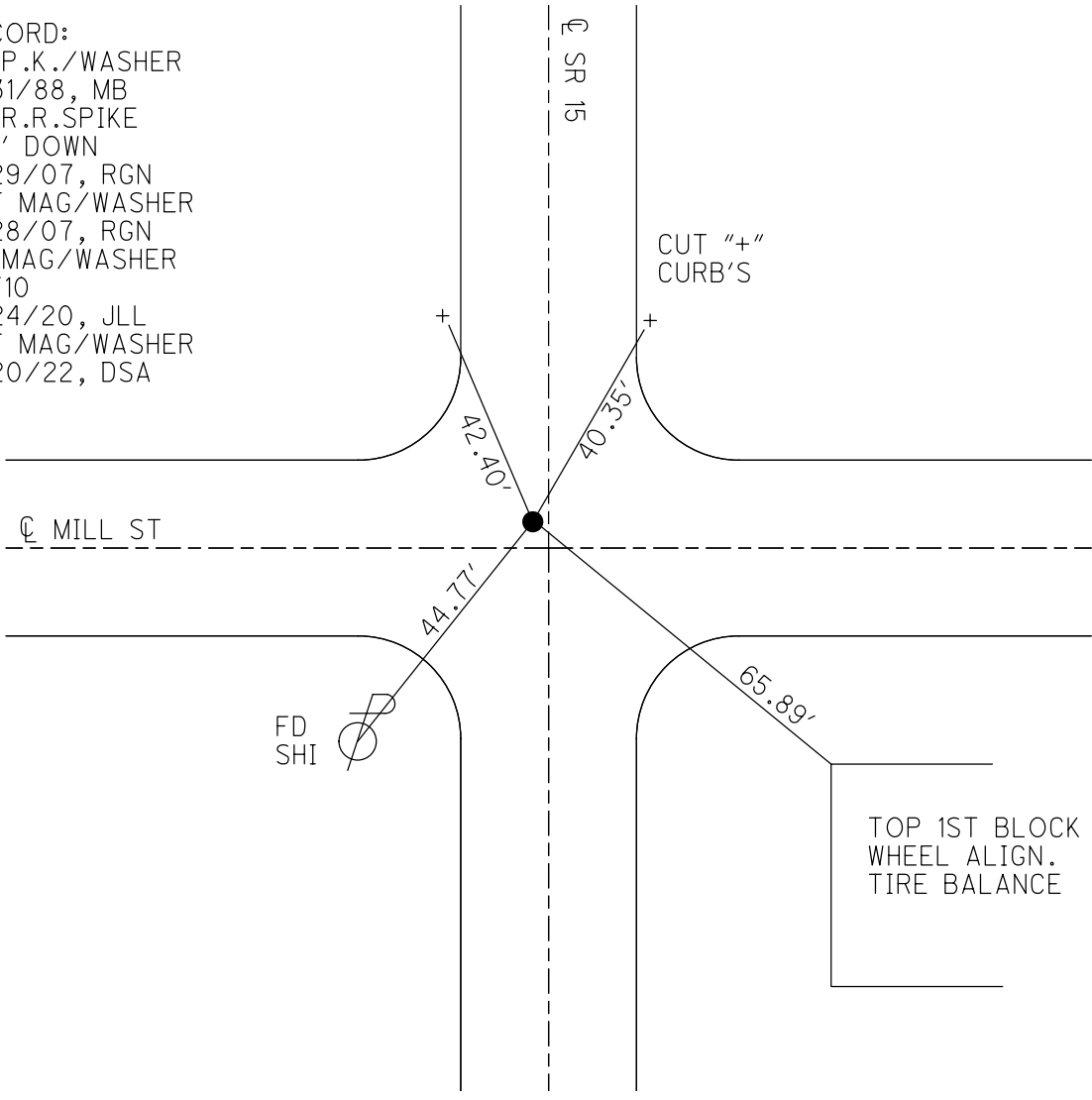
PERSONNEL _____ REFERENCE NO. 10 SHEET 12 OF 40
 NOTES MILLER DATE 9/20/21 ROUTE SR 15
 H.C. AUBLE WEATHER SUNNY COUNTY WILLIAMS
 R.C. NIESE TEMP. 64° TOWNSHIP MADISON
 _____ SECTION 21
 DWG BY RHOADES PID 95786 T 9 S R 2 W

TYPE MONUMENT MAG/WASHER
 ON SURFACE - ~~BELOW~~ ON
 OFFSET \varnothing PAVEMENT ON LT : RT
- TO - EDGE PAVEMENT
 STATION: 94+48.22



HORIZ.DATUM: NAD83 2011 GEOID: NAVD88 2012B
 GRID: NORTHING: 738803.082 EASTING: 1407554.593

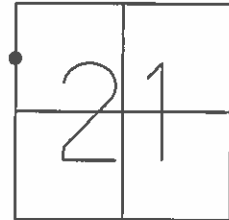
RECORD:
 FD P.K./WASHER
 8/31/88, MB
 FD R.R.SPIKE
 0.2' DOWN
 5/29/07, RGN
 SET MAG/WASHER
 8/28/07, RGN
 FD MAG/WASHER
 REF10
 3/24/20, JLL
 SET MAG/WASHER
 9/20/22, DSA



O.D.O.T. DISTRICT 2 SURVEY OFFICE (USE ONLY)

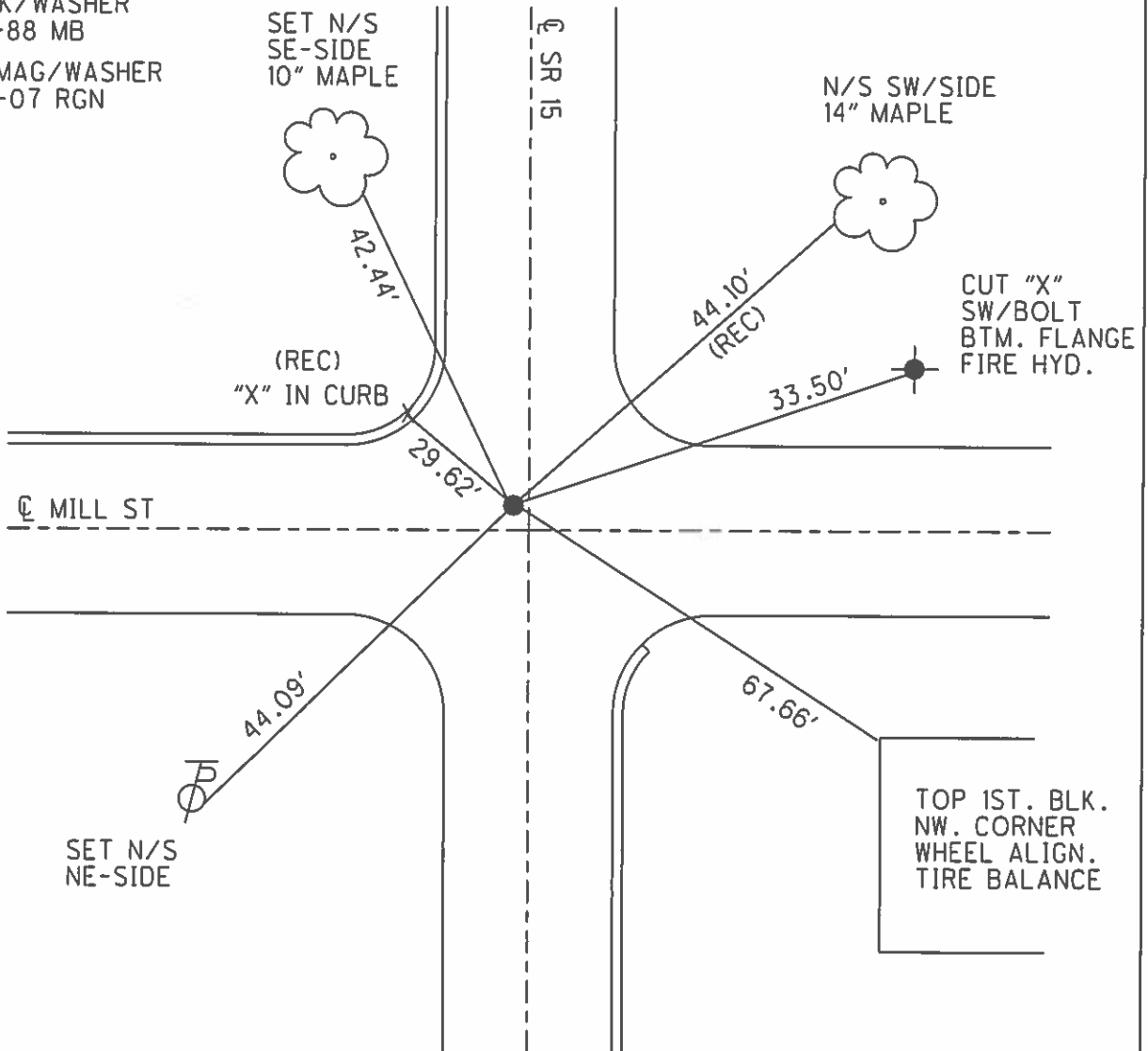
PERSONNEL _____ REFERENCE NO. 10 SHEET 12 OF 39
 NOTES NUHFER _____ DATE 5/29/07 ROUTE SR 15
 H.C. HUSS _____ WEATHER SUNNY COUNTY WILLIAMS
 R.C. HOUESHELL _____ TEMP. 74° TOWNSHIP MADISON
 _____ SECTION 21
 _____ T 9 S R 2 W

TYPE MONUMENT R.R.SPIKE
~~ON SURFACE~~ - BELOW 0.2'
~~LEFT~~ - ℄ PAV'T - RIGHT 0.3' WEST, 1.8' N.℄ MILL ST
- TO - EDGE PAVEMENT
 S.L.M. 96+46



GRID: NORTHING: 738807.638 EASTING: 1407554.651

FD PK/WASHER
 8-31-88 MB
 SET MAG/WASHER
 8-28-07 RGN



O.D.O.T. DISTRICT 2 SURVEY OFFICE

PERSONNEL

REFERENCE NO. 10

SHEET OF

NOTES BARNHISEL

H.C. Loehrke

R.C. Reed

DATE 8-5-88

WEATHER SUNNY

TEMP. +96°

ROUTE 15

COUNTY Williams

TOWNSHIP MADISON

SECTION 21

T 9 S R 2 W

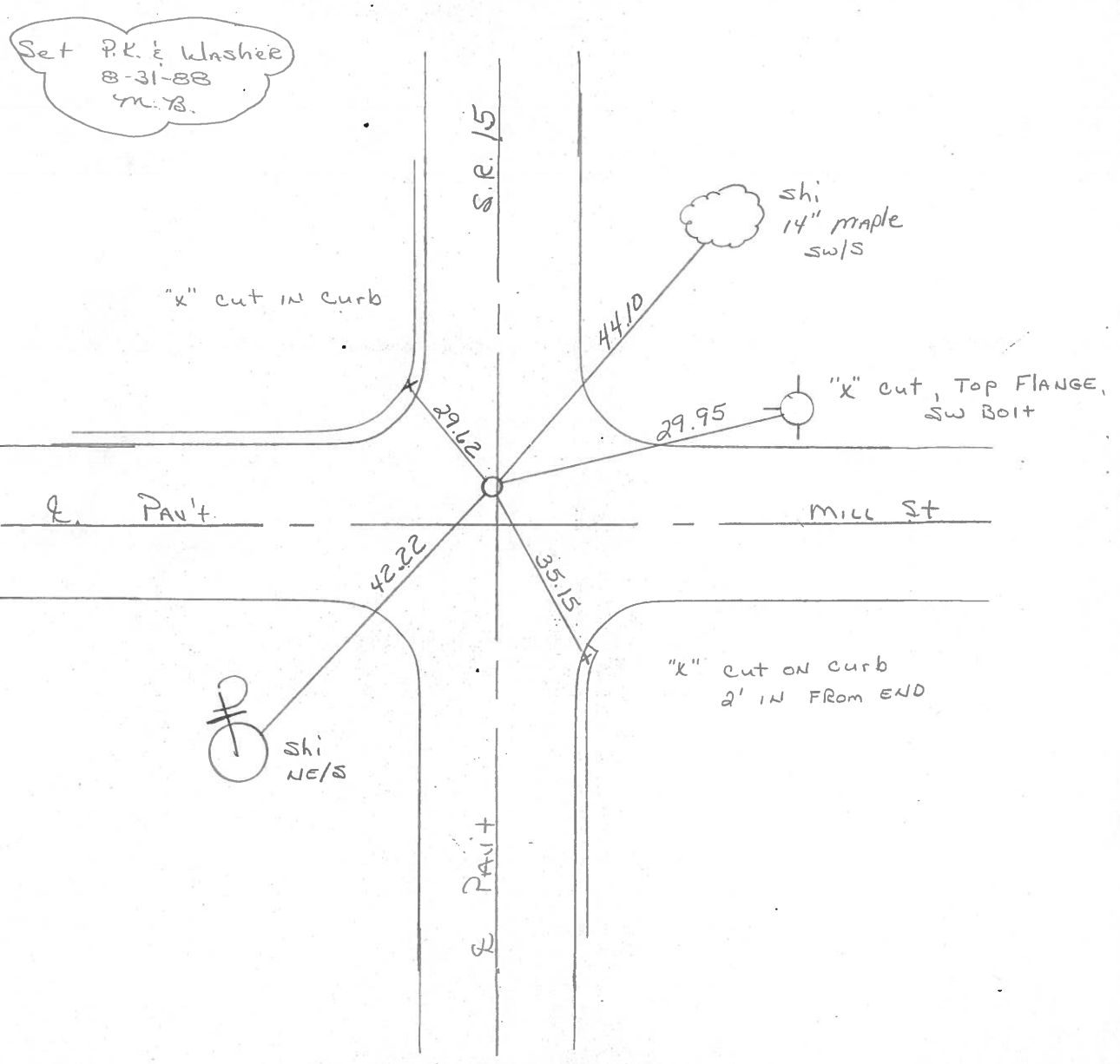
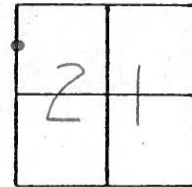
TYPE MONUMENT P.K. & Washer

ON SURFACE - ~~BELOW~~ yes

~~LEFT - &~~ PAV'T. - RIGHT .3

- TO - EDGE PAVEMENT 2' N. of E mill St

S.L.M. 94+46



OD.O.T. DISTRICT 2 SURVEY OFFICE

SHEET 7 OF

County Williams S.R. 15

Date 5-13-82

Township MADISON

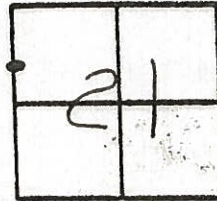
Weather clear

Section 21

Temp. +70°

T9^S, R2^W

Personnel HOFFMAN

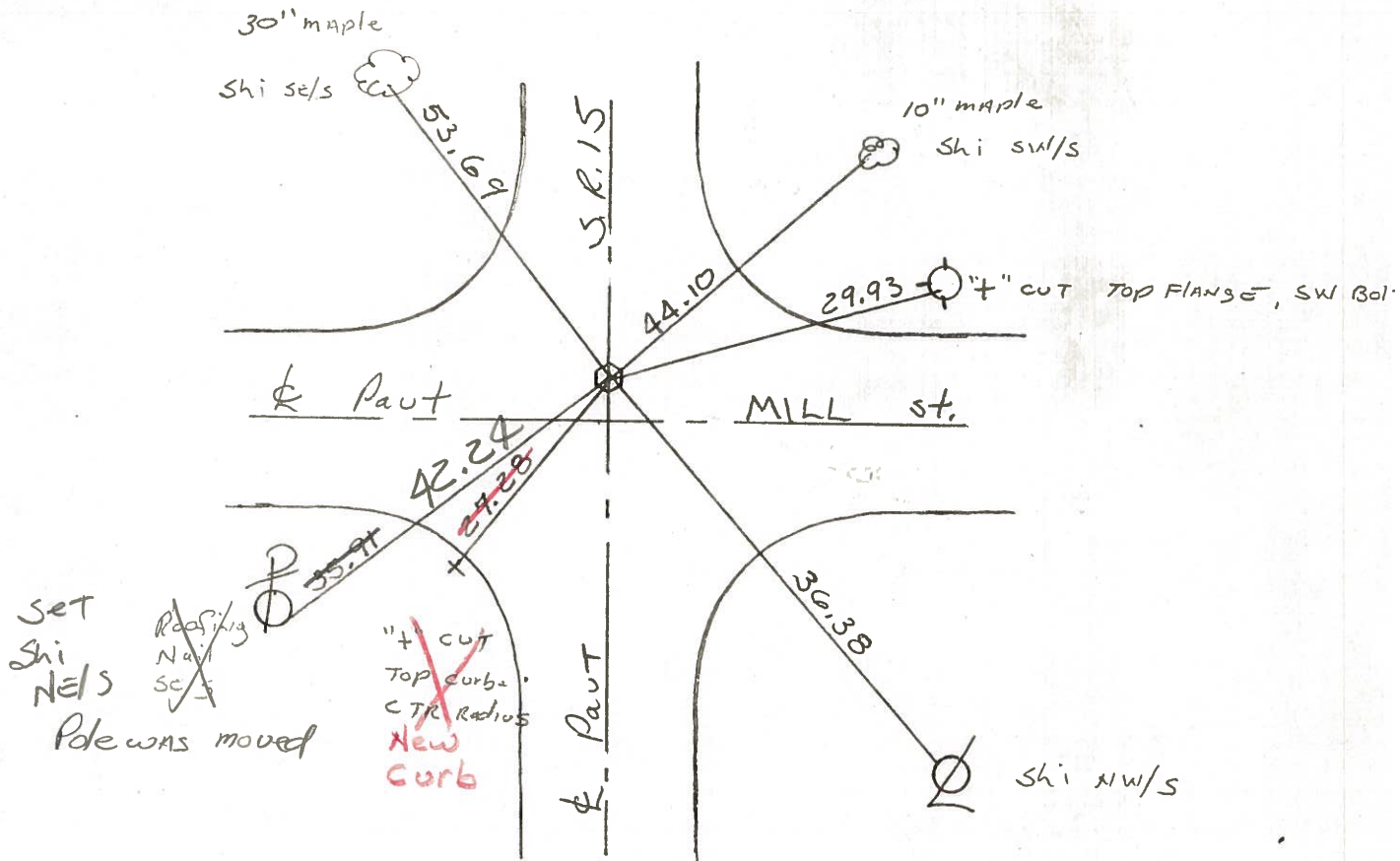


10

Crew

Ed R.R. spk/+ @ SURFACE SOURCE UNKNOWN SHM STA ± 94+45
ON & PAUT SR15
0' N. of & PAUT

SET P.K./WASHER
8-10-82
SWH



OD.O.T. DISTRICT 2 SURVEY OFFICE

SHEET 7 OF

County Williams S.R. 15

Date 5-13-82

Township Madison

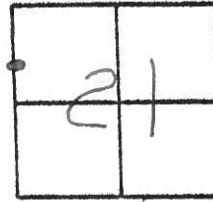
Weather clear

Section 21

Temp. +70°

T9^S, R2^E

Personnel Hoffman



10

Crew

Fd R.R. spk/+ @ surface Source UNKNOWN

sh m sta ± 94+45

ox & pavt sr15

4.0' N. of & pavt

SET P.K. & WASHER
B-10-82
S.W.H.

