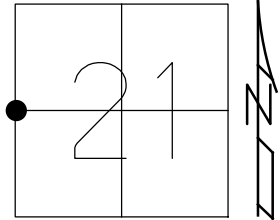


O.D.O.T. DISTRICT 2 SURVEY OFFICE (USE ONLY)

PERSONNEL _____ REFERENCE NO. 11 SHEET 14 OF 40
 NOTES RHOADES DATE 10/26/21 ROUTE SR 15
 H.C. AUBLE WEATHER SUNNY COUNTY WILLIAMS
 R.C. RHOADES TEMP. 45° TOWNSHIP MADISON
 DWG BY RHOADES PID 95786 SECTION 21
 T 9 S R 2 W

TYPE MONUMENT MAG/WASHER
 ON SURFACE - ~~BELOW~~ ON
 OFFSET C PAVEMENT ON LT : RT
11.5' TO LT EDGE PAVEMENT
 STATION: 107+38.13



HORZ. DATUM: NAD83 2011 GEOID: NAVD88 2012B
 GRID: NORTHING: 737513.491 EASTING: 1407525.911

COR. BOTTOM
BRICK
ABOVE FDN



21.78' +

97.20' REC

C SR 15

SET "+"
CURB'S

+ 22.51'

FRONT COR.
STONE HOUSE

105.43' REC

RECORD:

STA. 110+18.16

$\Delta = 0^\circ 2' 30''$

1956

FD P.K./WASHER

8/31/88, MB

FD MAG NAIL

5/29/07, RGN

SET MAG/WASHER

8/28/07, RGN

FD MAG/WASHER

REF11

3/24/20, JLL

SET MAG/WASHER

9/20/22, DSA

27.67'



FD "+"
W-SW BOLT
FLANGE
HYDRANT

53.03'

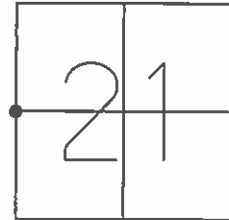


1' UP
BEVELED EDGE
SIGN POST
DOLLAR GEN.

O.D.O.T. DISTRICT 2 SURVEY OFFICE (USE ONLY)

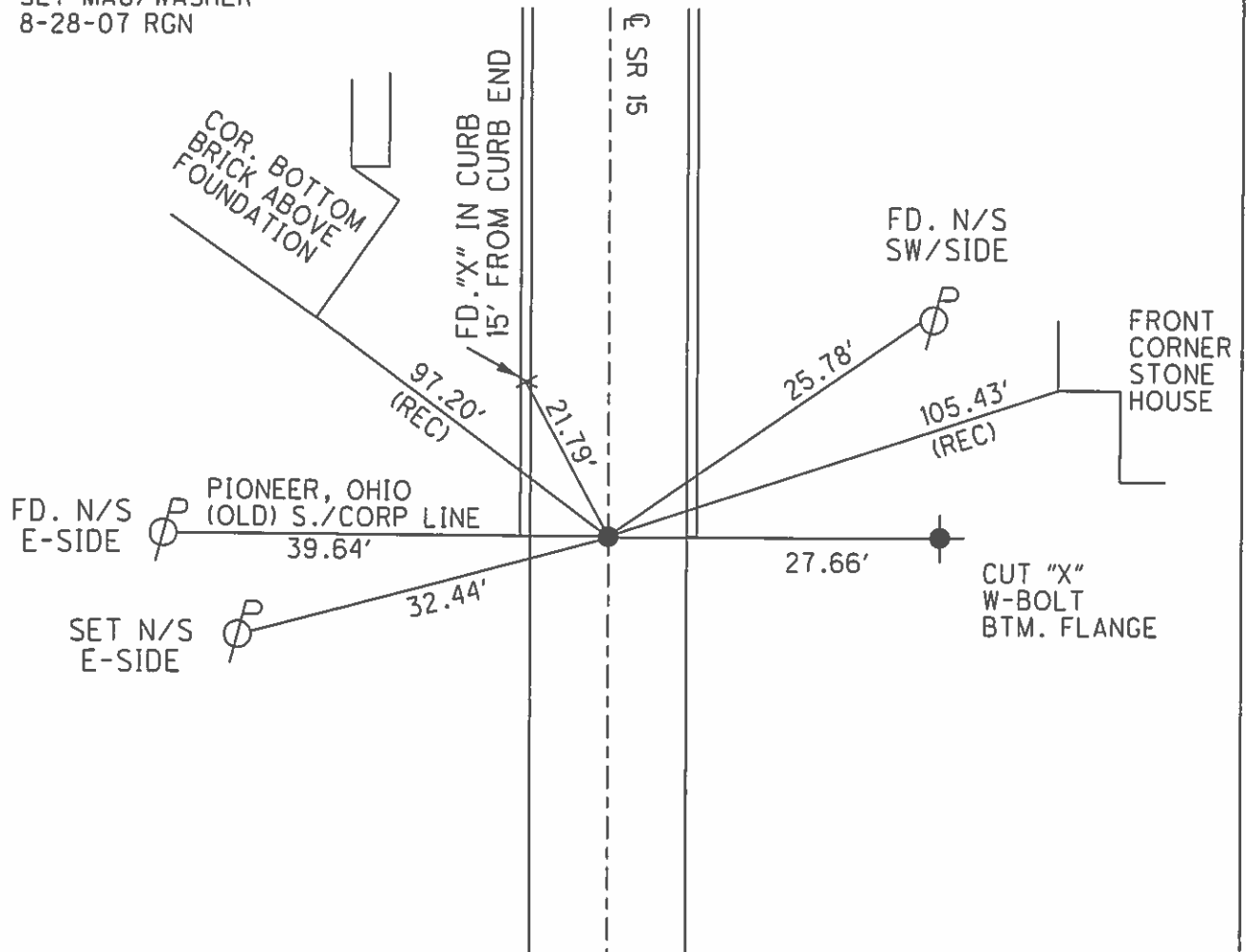
PERSONNEL _____ REFERENCE NO. 11 SHEET 13 OF 39
 NOTES NUHFER DATE 5/29/07 ROUTE SR 15
 H.C. HUSS WEATHER SUNNY COUNTY WILLIAMS
 R.C. HOUESHELL TEMP. 85° TOWNSHIP MADISON
 _____ SECTION 21
 _____ T 9 S R 2 W

TYPE MONUMENT MAG NAIL
~~ON SURFACE~~ - BELOW 0.1'
~~LEFT~~ - CL PAV'T - ~~RIGHT~~ ON
11.5' TO LT EDGE PAVEMENT
 S.L.M. 107+43



GRID: NORTHING: 737513.461 EASTING: 1407525.815

FD PK/WASHER
 8-31-88 MB
 SET MAG/WASHER
 8-28-07 RGN



O.D.O.T. DISTRICT 2 SURVEY OFFICE

PERSONNEL _____

REFERENCE NO. 11

SHEET _____ OF _____

NOTES BARNHISEL

H.C. Loehake

DATE 8-5-88

ROUTE 15

R.C. Reed

WEATHER SUNNY

COUNTY Williams

TEMP. +96°

TOWNSHIP Madison

SECTION 21

T 9 S R 2 W

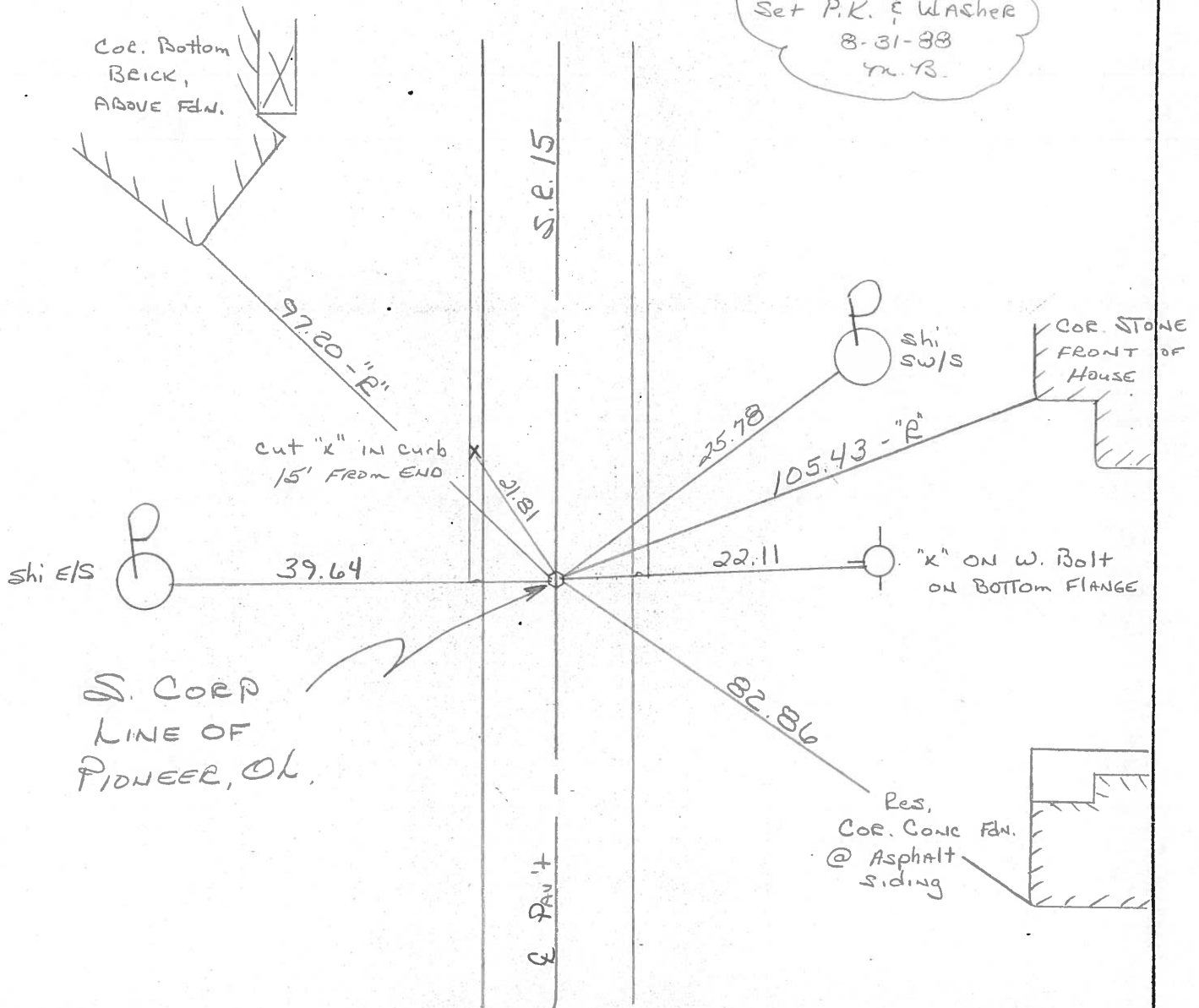
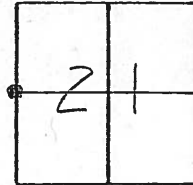
TYPE MONUMENT Sm RR Spk

ON SURFACE - ~~BELOW~~ yes

LEFT - & PAV'T. - RIGHT yes

11.5 TO LT EDGE PAVEMENT

S.L.M. 107 + 43



County WILLIAMS S.R. 15

Township MADISON

Section W 1/4 Post SEC. 21

T98, R2E

Personnel HOFFMAN

LOEHRKE

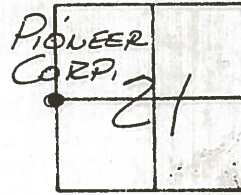
HOUSEHOLDER

39 (II)

Date 5-13-82

Weather CLEAR

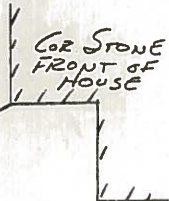
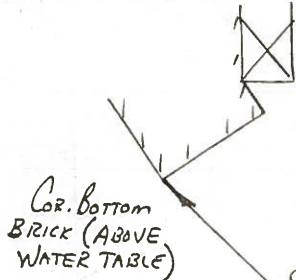
Temp. +75°



FD. 1/2" I. PIPE @ SURFACE
 OVER 1/2" x 1/2" RE BAR IN
 12' x 12" CONC. 2 3/4' DEEP
 AS PER R. BEACH 1972

S.L.M. Sta. 107+40±

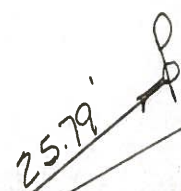
SET SMALL R.R. SAK
 B-10-82
 SWN



SOUTH CORP. LINE
PIONEER OHIO
 INTERIOR LINE SEC. 20



39.62'



105.43'

22.11'

1" CUT TOP W. BOLT ON BOTTOM FLANGE

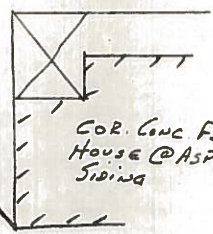
180-03.4'

E. & W. INTERIOR SEC. 21

59.74'

SH1. W/SIDE 24" MAPLE

82.97'



County Williams S.R. 15

Date 11-29-79

Township MADISON

Weather CLOUDY

Section W 1/4 Post. SEC. 21

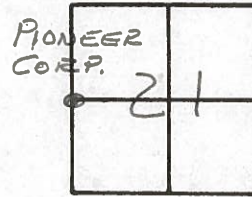
Temp. +30°

T9N, R2E

Personnel BURNSIDE

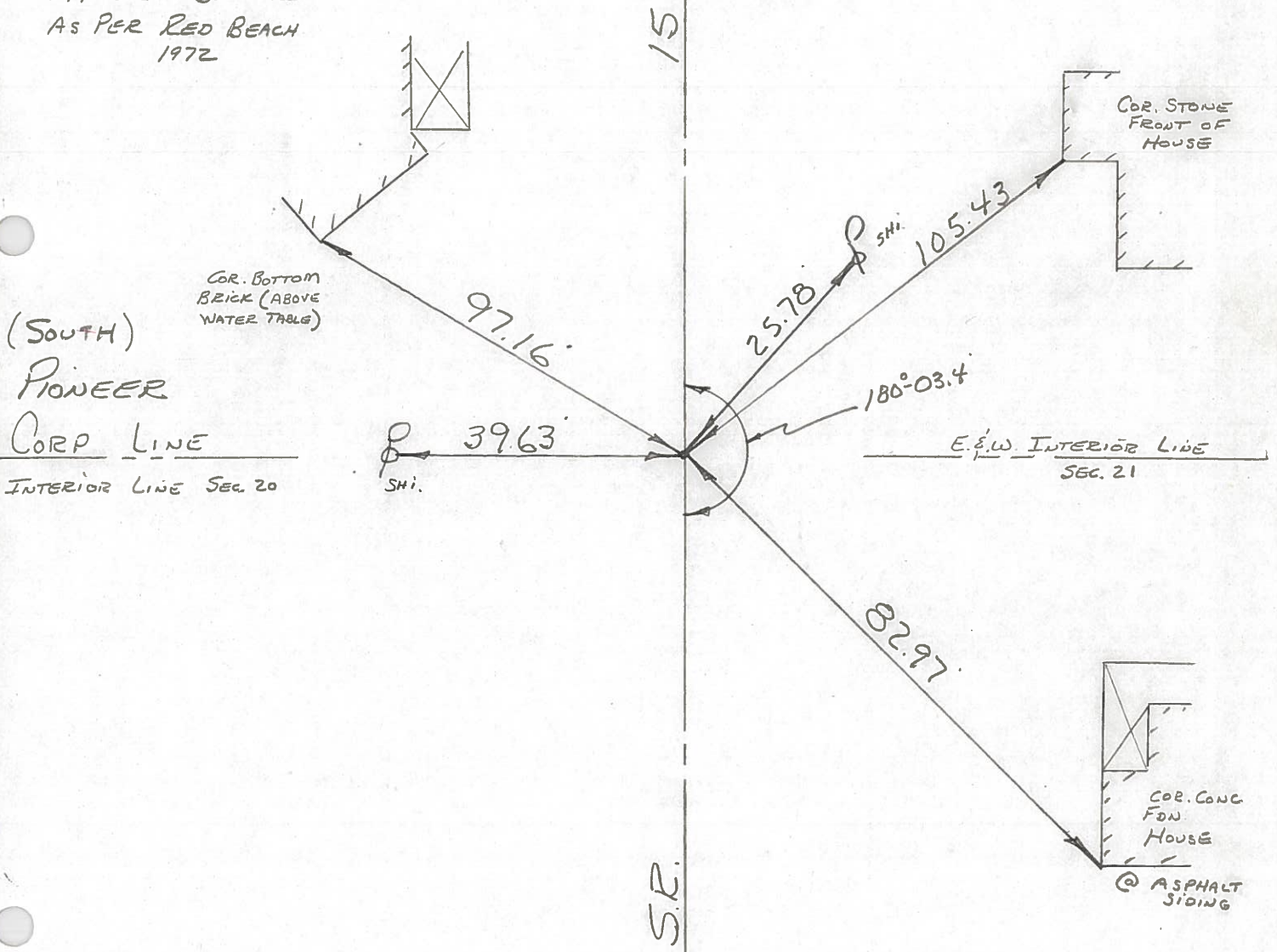
SMITH

MEAD



FD. 1/2" IRON PIPE @ SURFACE
 OVER 1/2" x 1 1/2" RET. BAR
 IN 12" x 12" CONC.
 2 3/4" BELOW SURFACE
 AS PER RED BEACH
 1972

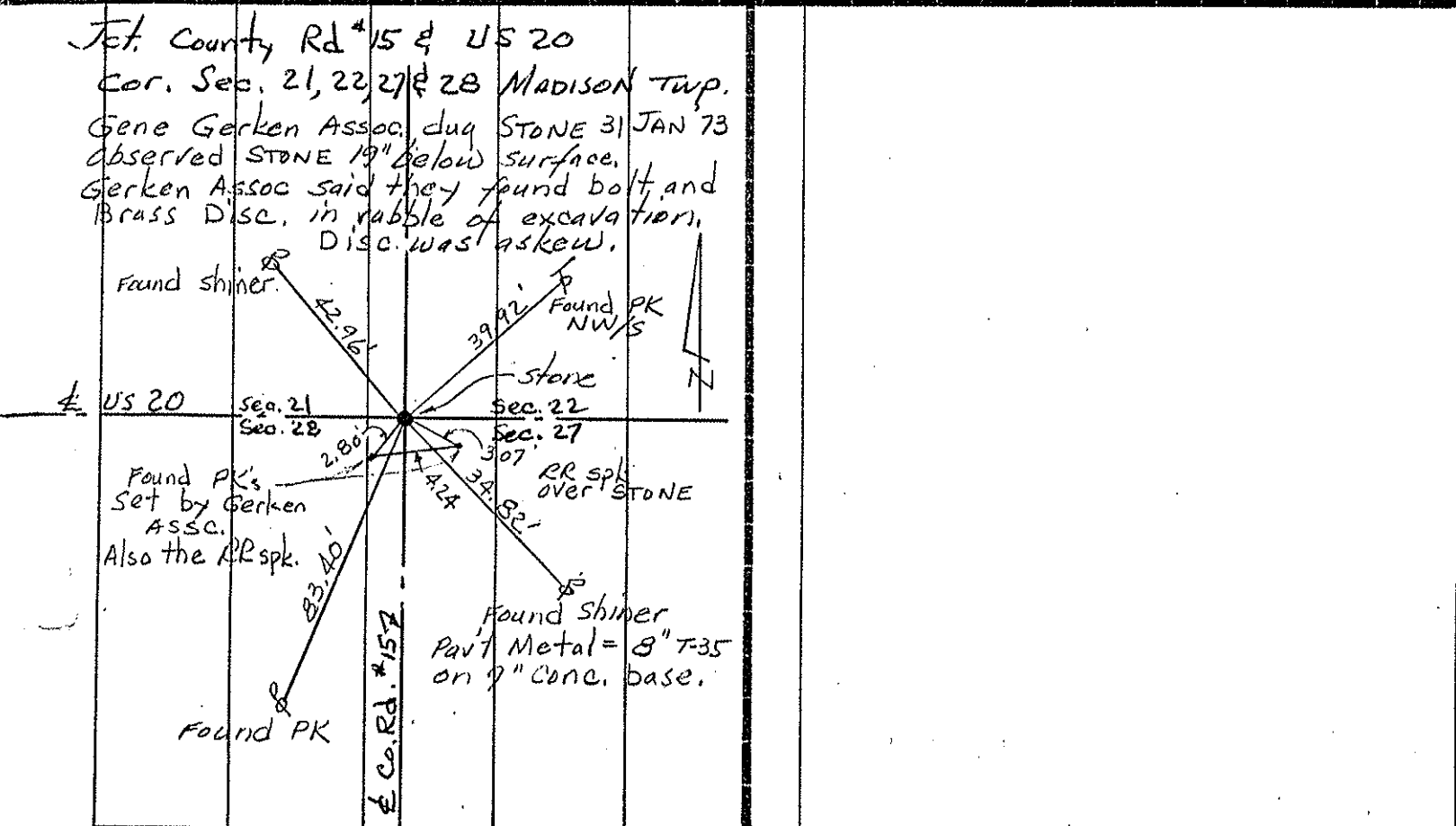
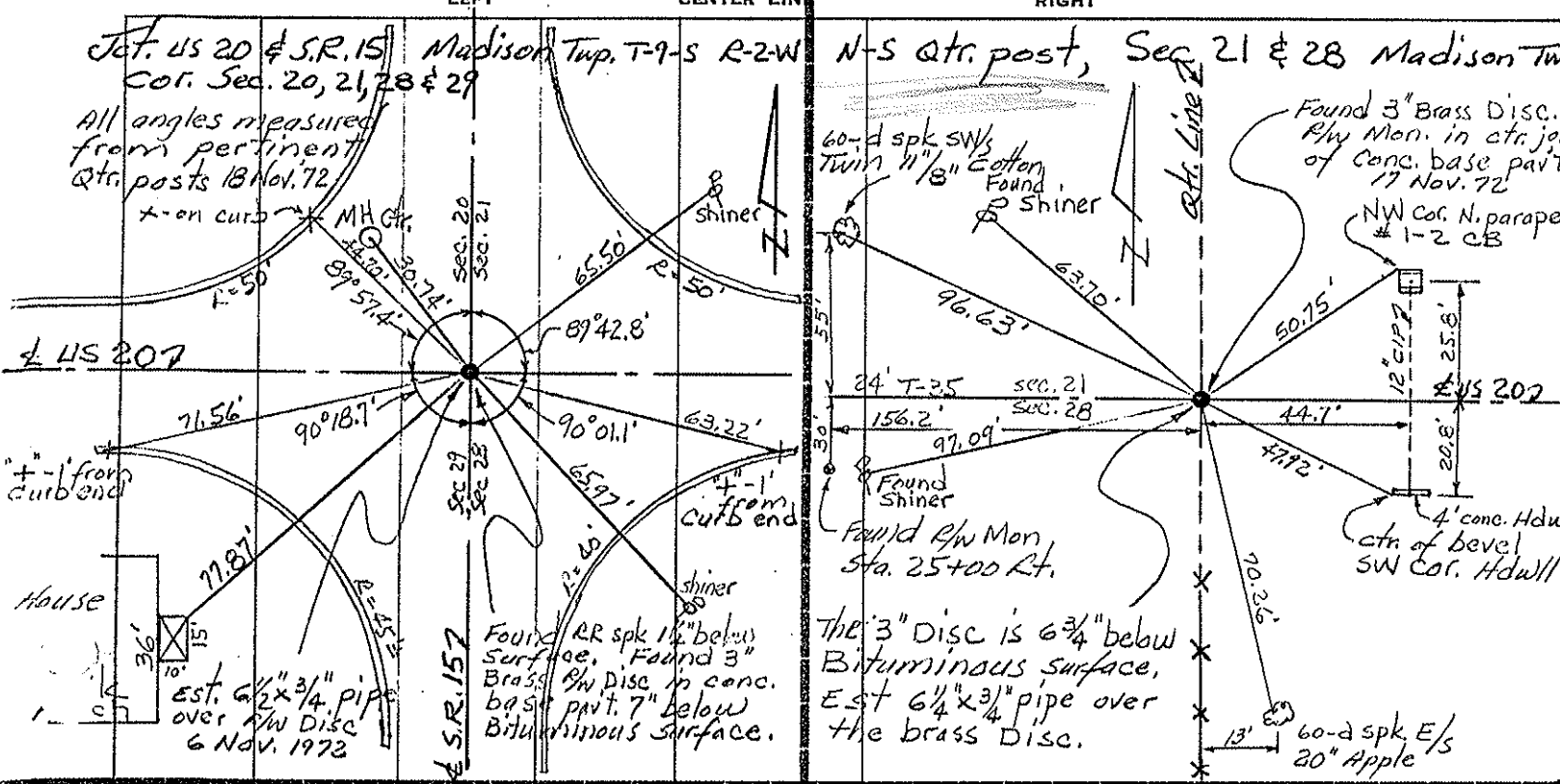
~~39~~ ~~12~~ ~~11~~



PERSONNEL	TITLE	PERSONNEL	TITLE
Red Beach			
Newcom 10			
Knape			

COUNTY Williams DATE Nov 72
 S. R. US 20 WEATHER _____
 SEC. Madison Twp. TEMP. _____

DESCRIPTION CONTROL POINTS JOB NO. _____



PERSONNEL TITLE PERSONNEL TITLE

Bowman

COUNTY Wm's

DATE 3-6-64

Huff

S. R. # 15

WEATHER Cloudy

Berid

From Mich. line
SEC. To U.S. Rt #20

TEMP. 35°

DESCRIPTION

Re-check of Control Points

JOB NO. _____

LEFT

CENTER LINE

RIGHT



P.I. Sta. 136 + 72.7
Intersection - N-US Rt 20
& Ohio S.R. #15

For Ref. See State Route
15 From Rt 20 to Bryan
N. Corp. Line



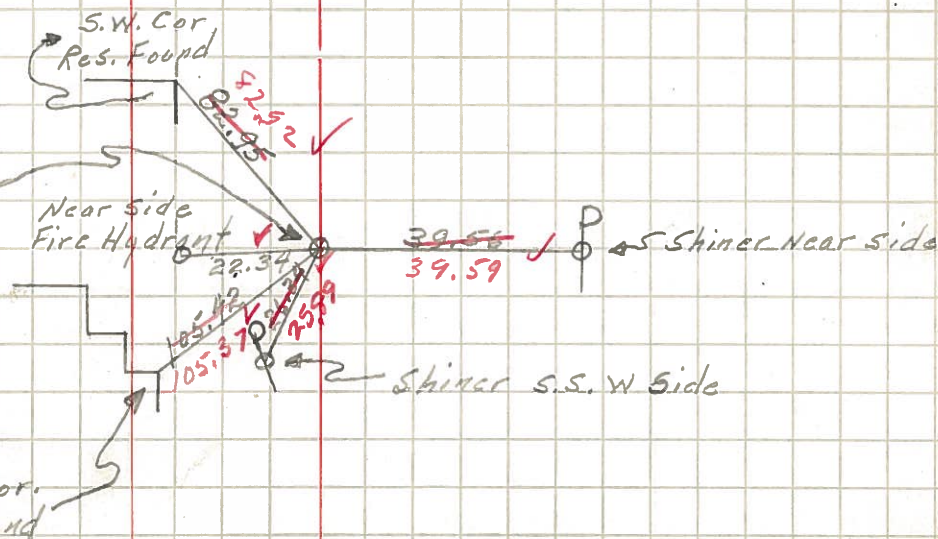
P.I. Sta 110 + 18.16
Iron pin in 12" x 12" Conc.
Monument

A = 0° - 02' - 30" Rt.

Pioneer S. Corp.
Line

Ref. Sheet #11
1956 Constr. Plan

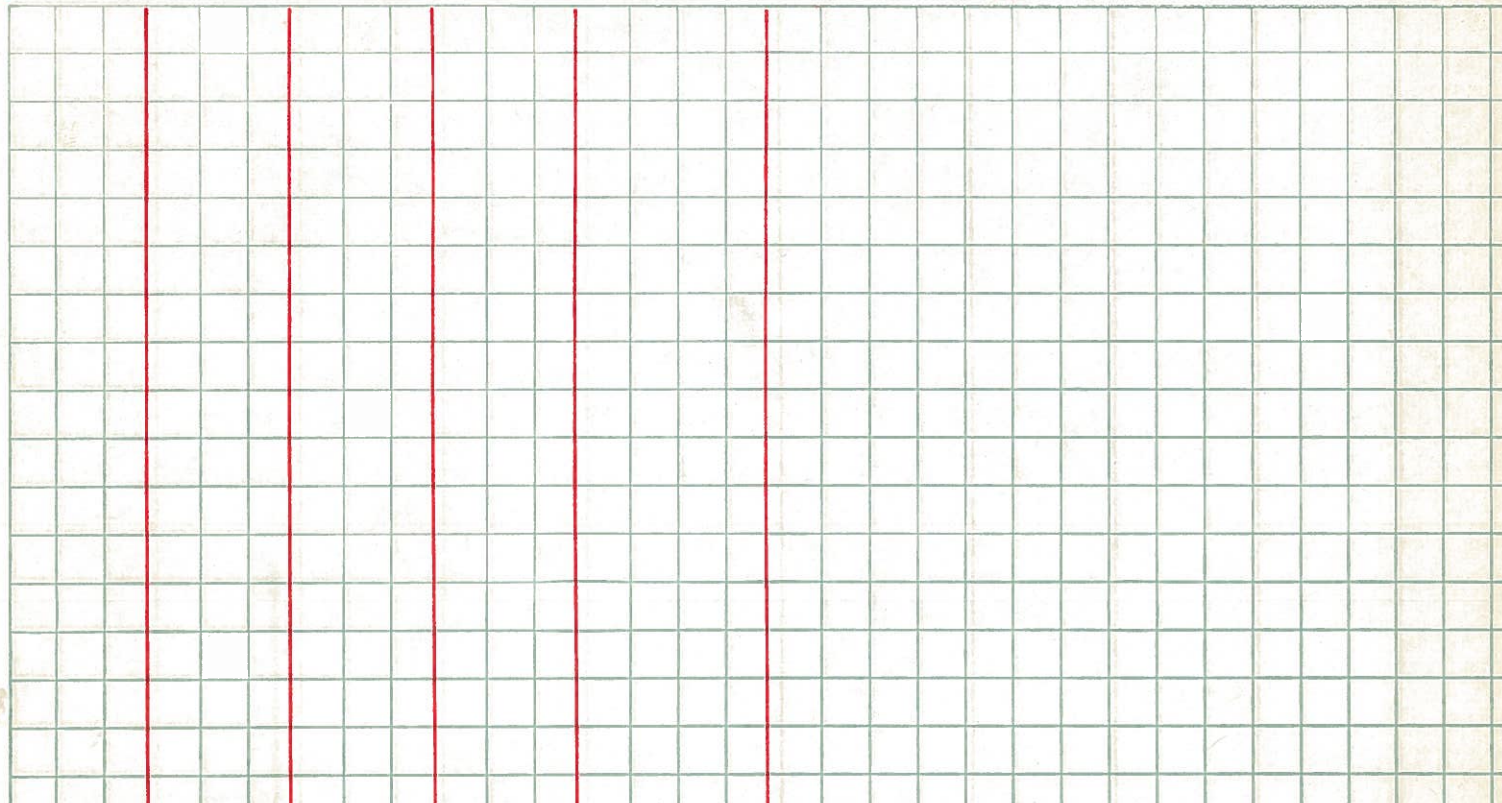
Placed Nail &
Shiner over same
9/12/69 LRE



PERSONNEL	TITLE	PERSONNEL	TITLE
Louys			
Persefall			
Wise			
Krohn			

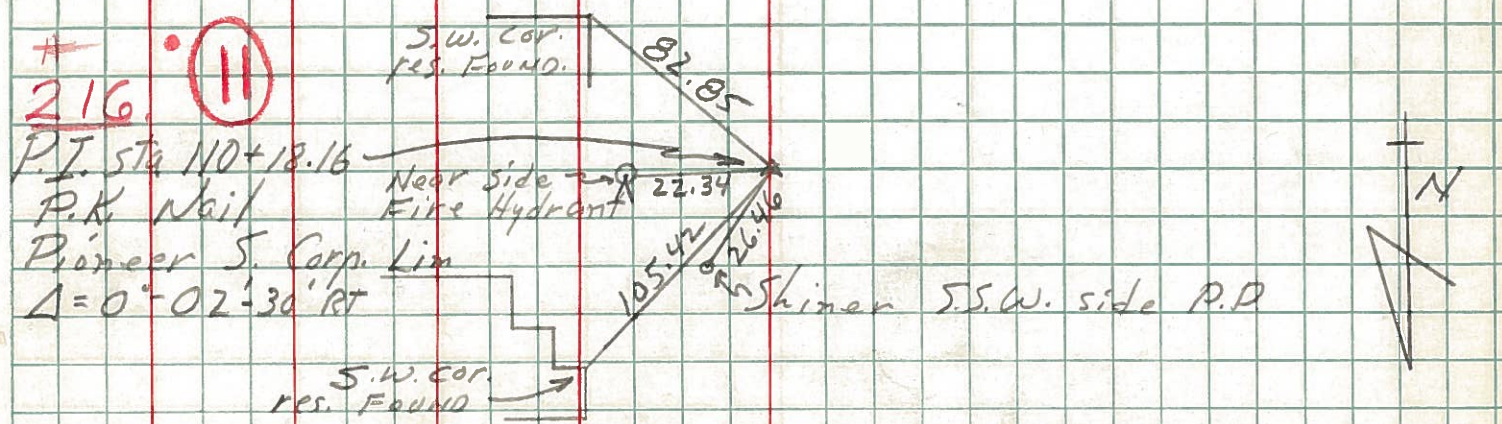
COUNTY Wi. DATE 7-22-58
 S. R. 15 WEATHER Cloudy
 From Mich LINE
 SEC. TO U.S. Rt. # 20 TEMP. 75°

DESCRIPTION Re-Check of Witnesses JOB NO. _____
 LEFT CENTER LINE RIGHT



217 (12)
 P.I. sta 136+72.7 =
 INT. x. U.S. Rt. 20
 & Ohio S.R. # 15

For REFERENCES see P. 15 sect.
 From Rt. 20 to Bryan
 N. Corp. LINE.



PERSONNEL TITLE PERSONNEL TITLE

COUNTY W.V. DATE _____

S. R. 15 WEATHER _____

SEC. _____ TEMP. _____

DESCRIPTION Witnesses to Control Points

LEFT CENTER LINE RIGHT JOB NO. _____

Sta 163+22.15 (R.R. Spk) see survey dated 1953 → NE. Cor. Porch Found.

Sta 136+72.7 (Insect RT #20)
Found P.K Nail **(12)**
Δ = 0°-14' Lt.
Shiner SW. side T.P. 69.86
Shiner S.E. side T.P. 40.55
78.47

(11)
Sta 110+18.16 ("Pioneer" S. Corp Line)
Found I.P. (in 12"x12" Conc) Near side base of Fire Hyd. 22.34
Δ = 0°-02'-30" Rt
Shiner SW. side P.P. 26.40
82.89
S.W. Cor. House Found.

(7)
Sta 80+82.17 (back) =
Sta 83+66.40 (ahead)
Found I.P. (in 12"x12" Conc.)
Δ = 0°-20' Lt.
Note: Ties are to corners of Business Bldgs @ sidewalk level.
44.88
51.05
66.02
66.74
69.74

(4)
Sta 54+31.52 ("Pioneer" N. Corp Line)
Found I.P. (in 12"x12" Conc.)
Δ = 0°-13' Rt.
Shiner N. side T.P. 87.05
Shiner N. Side T.P. 60.74
Shiner S.E. side T.P. 34.80