

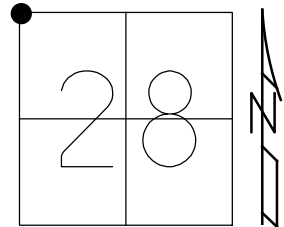
O.D.O.T. DISTRICT 2 SURVEY OFFICE (USE ONLY)

PERSONNEL _____ REFERENCE NO. 12 SHEET 15 OF 40

NOTES NIESE DATE 4/28/22 ROUTE SR 15
 H.C. AUBLE WEATHER SUNNY COUNTY WILLIAMS
 R.C. PARADYZ TEMP. 38° TOWNSHIP MADISON
 SECTION 28

DWG BY RHOADES PID 95786 T 9 S R 2 W

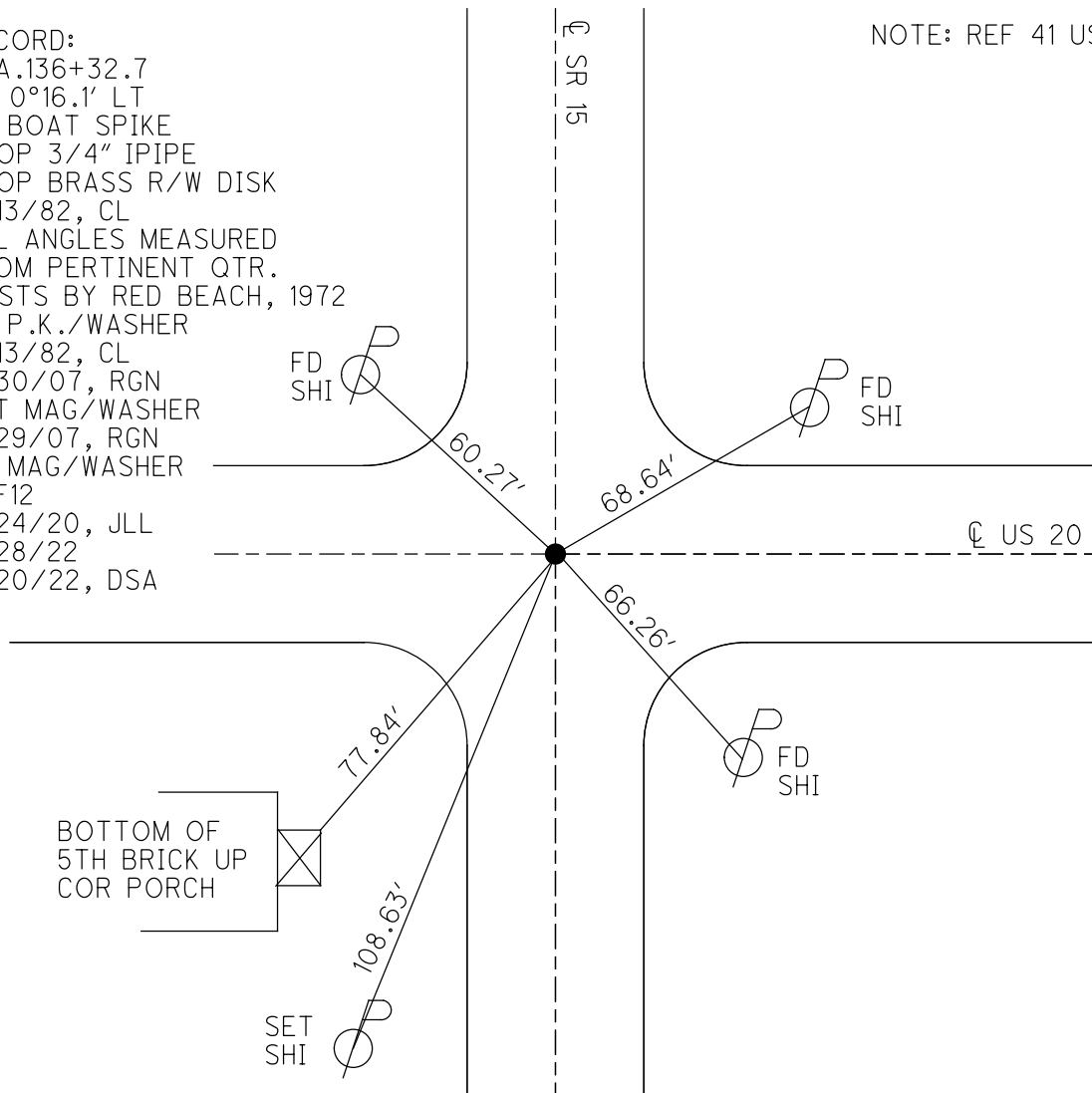
TYPE MONUMENT MAG/WASHER
 ON SURFACE - ~~BELOW~~ ON
 OFFSET \varnothing PAVEMENT 1' \pm RT
- TO - EDGE PAVEMENT
 STATION: 133+92.88



HORZ. DATUM: NAD83 2011 GEOID: NAVD88 2012B
 GRID: NORTHING: 734860.263 EASTING: 1407464.081

RECORD:
 STA.136+32.7
 $\Delta = 0^\circ 16.1' \text{ LT}$
 FD BOAT SPIKE
 ATOP 3/4" IPIPE
 ATOP BRASS R/W DISK
 5/13/82, CL
 ALL ANGLES MEASURED
 FROM PERTINENT QTR.
 POSTS BY RED BEACH, 1972
 FD P.K./WASHER
 5/13/82, CL
 5/30/07, RGN
 SET MAG/WASHER
 8/29/07, RGN
 FD MAG/WASHER
 REF12
 3/24/20, JLL
 4/28/22
 9/20/22, DSA

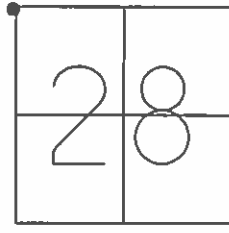
NOTE: REF 41 US 20



O.D.O.T. DISTRICT 2 SURVEY OFFICE (USE ONLY)

PERSONNEL _____ REFERENCE NO. 12 SHEET 14 OF 39
 NOTES NUHFER _____ DATE 5/30/07 ROUTE SR 15
 H.C. HUSS WEATHER SUNNY COUNTY WILLIAMS
 R.C. HOUESHELL TEMP. 92° TOWNSHIP MADISON
 _____ SECTION 28
 _____ T 9 S R 2 W

TYPE MONUMENT P.K./WASHER
 ON SURFACE - ~~BELOW~~ ON
~~LEFT~~ - ☉ PAV'T - RIGHT 1' WEST
- TO - EDGE PAVEMENT
 S.L.M. 134+00



GRID: NORTHING: 734860.287 EASTING: 1407464.101

FD PK/WASHER
 5/13/82, CL
 SET MAG/WASHER
 8-29-07 RGN

NOTE: SR 15
 $\Delta = 0^{\circ}16.1' LT$
 FD BOAT SPIKE
 ATOP 3/4" IPIPE
 ATOP BRASS R/W DISK
 5/13/82, CL
 ALL ANGLES MEASURED
 FROM PERTINENT QTR.
 POSTS BY RED BEACH, 1972

FD. N/S
 SE-SIDE

60.28'

69.41' FD. N/S
 SW-SIDE

☉ US 20

77.88'

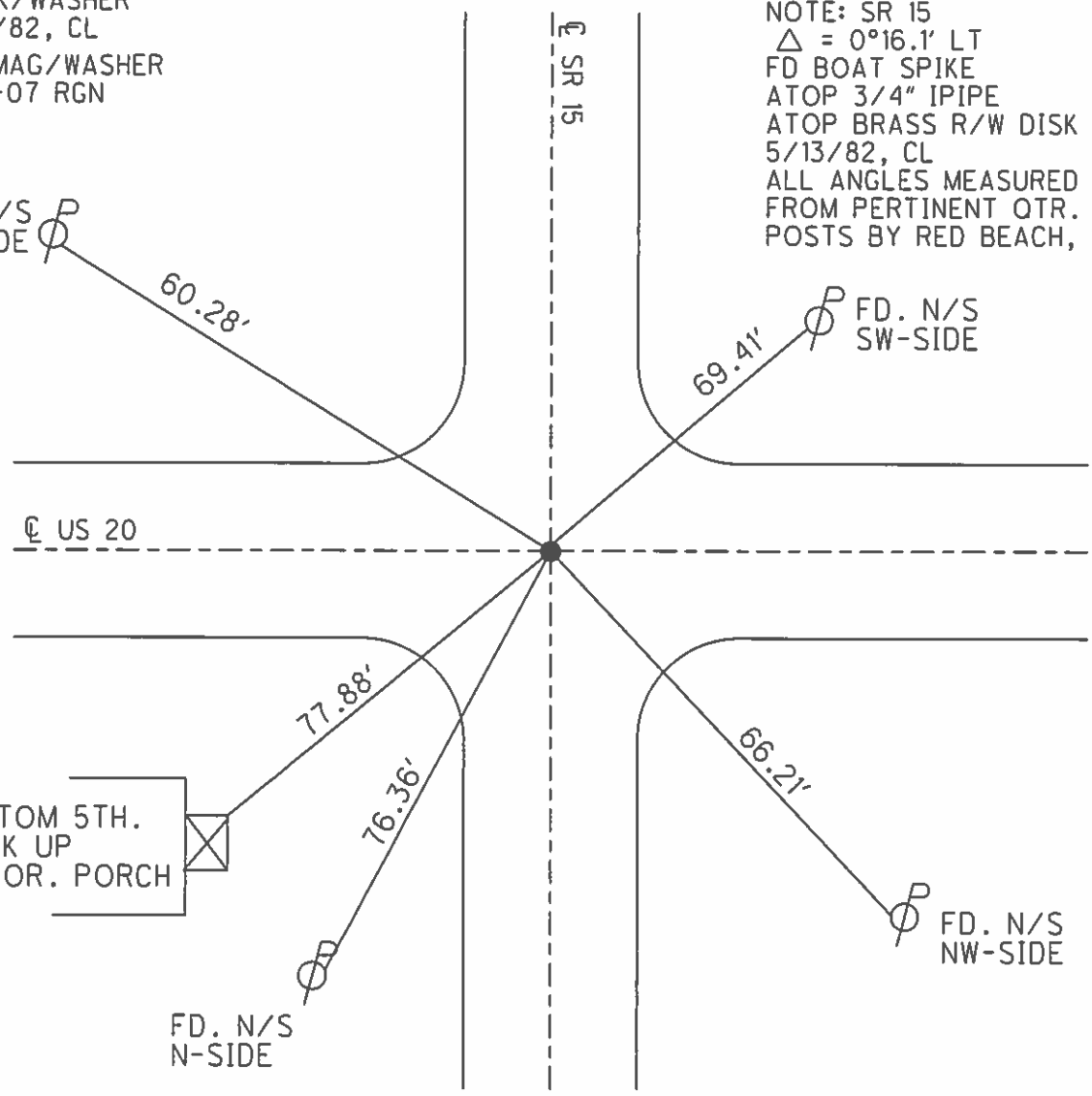
66.21'

BOTTOM 5TH.
 BRICK UP
 NE.COR. PORCH

FD. N/S
 N-SIDE

FD. N/S
 NW-SIDE

76.36'



County WILLIAMS S.R. 15

Date 5-13-82

Township MADISON

Weather CLEAR

Section N.W. COR. SEC. 28

Temp. +75

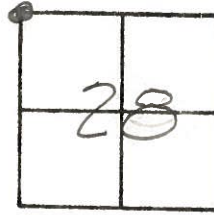
T9S, R2E

Personnel HOFFMAN

LOERKE

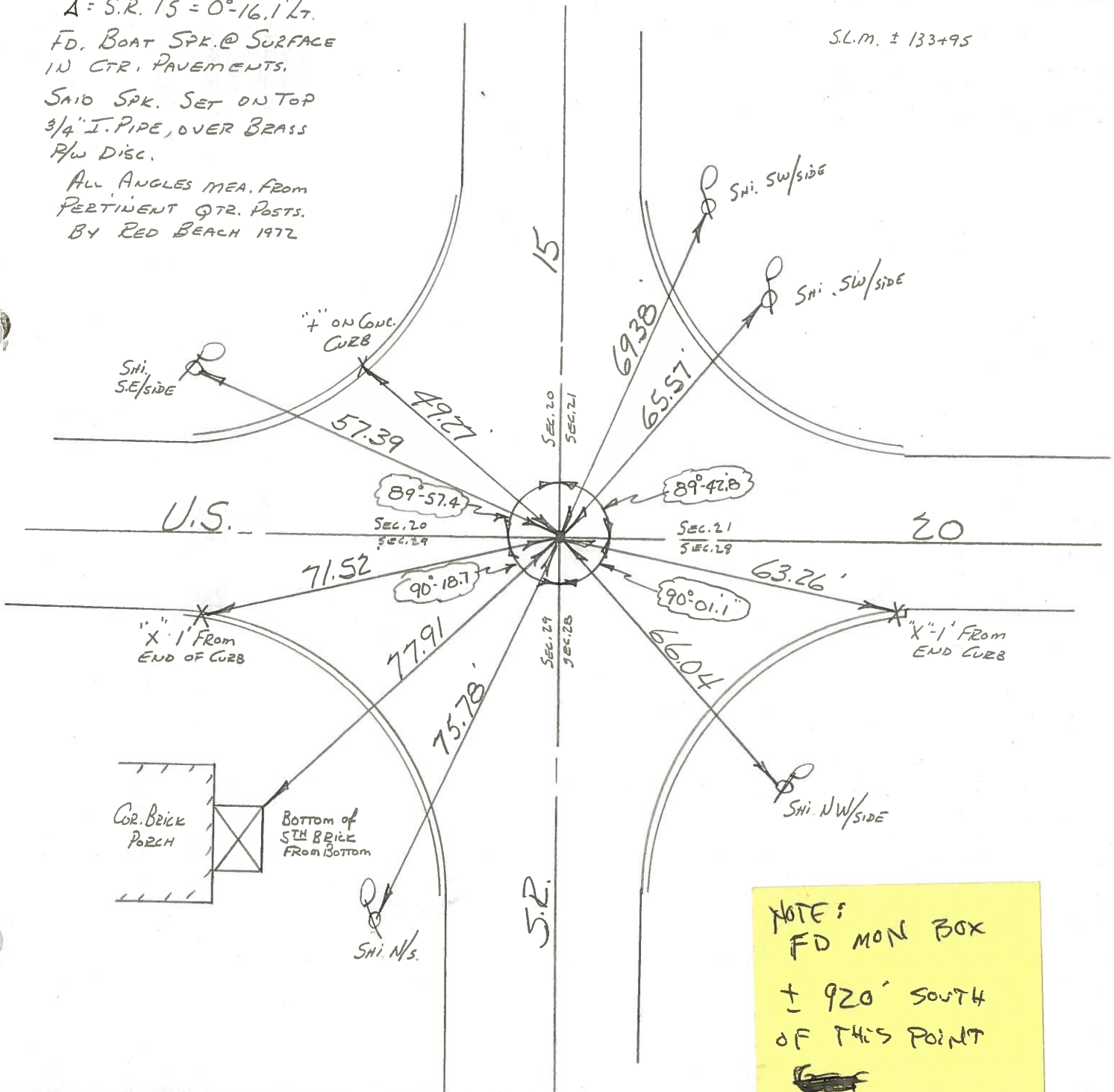
HOUSEHOLDER

38 (12)



A = S.R. 15 = 0°-16.1 Lt.
 FD. BOAT SPK. @ SURFACE
 IN CTR. PAVEMENTS.
 SAID SPK. SET ON TOP
 3/4" I. PIPE, OVER BRASS
 P/W DISC.
 ALL ANGLES MEA. FROM
 PERTINENT QTR. POSTS.
 BY RED BEACH 1972

S.L.M. ± 133+95



County Williams S.R. 15

Date 11-29-79

Township MADISON

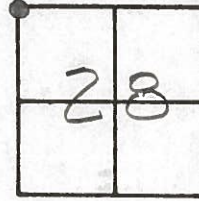
Weather Cloudy Lt. Snow

Section N.W. Cor. Sec. 28

Temp. +30°

T98, R2E

Personnel BURNSIDE
SMITH
MEAD



Δ -S.R. 15 = 0° 16.1' LT.

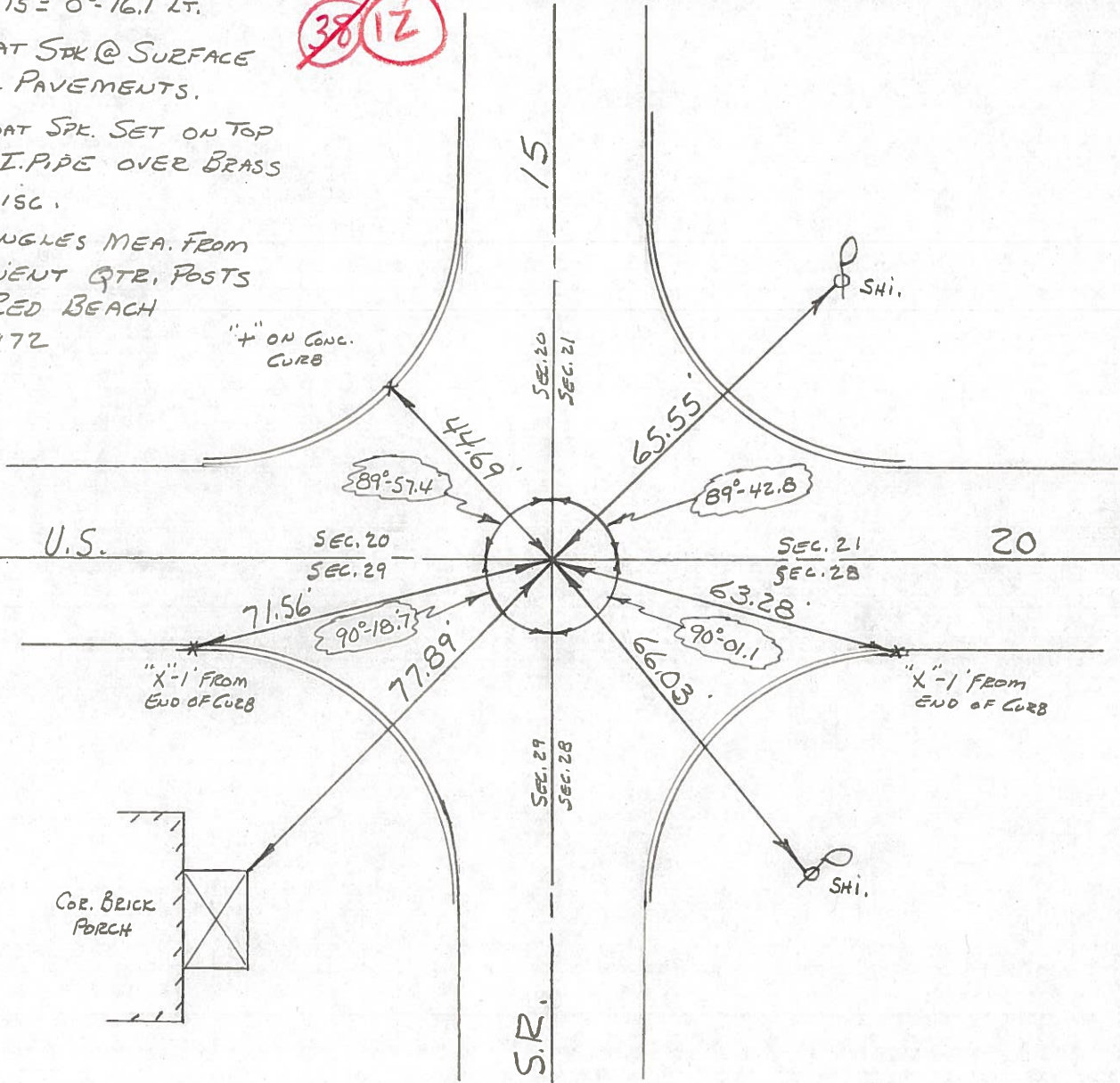
FD. BOAT STK @ SURFACE
IN CTR. PAVEMENTS.

~~38~~ 12

SAID BOAT STK. SET ON TOP
OF 3/4" I. PIPE OVER BRASS
R/W DISC.

ALL ANGLES MEA. FROM
PERTINENT QTR. POSTS
BY RED BEACH
1972

"+" ON CONC.
CURB



U.S.

20

S.R. 15

COR. BRICK
PORCH

SHI.

"X"-1' FROM
END OF CURB

"X"-1' FROM
END OF CURB

SEC. 20
SEC. 29

SEC. 21
SEC. 28

SEC. 29
SEC. 28

SEC. 20
SEC. 21

89°-57.4

89°-42.8

71.56

63.28

90°-18.7

90°-01.1

77.89

66.03

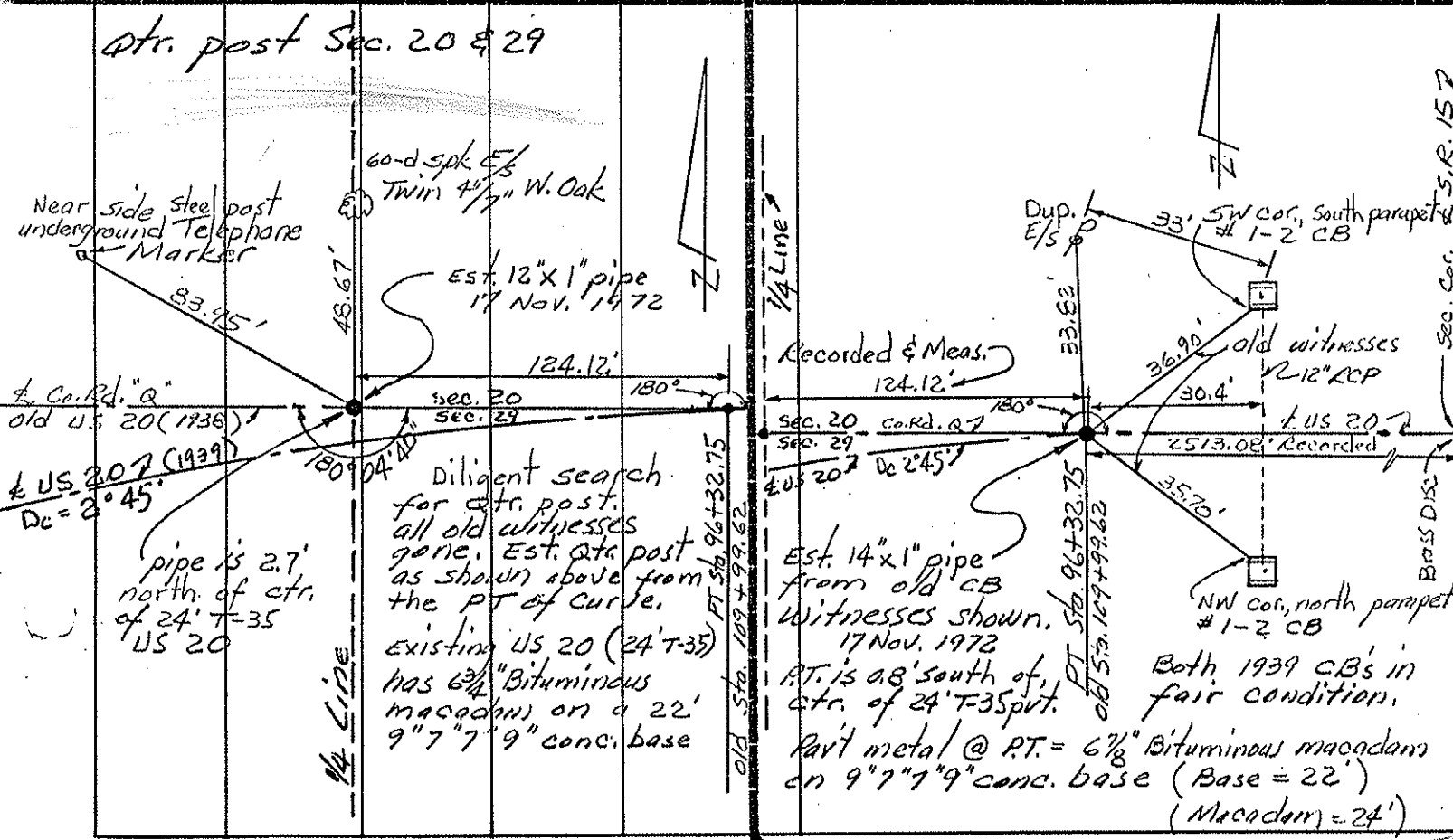
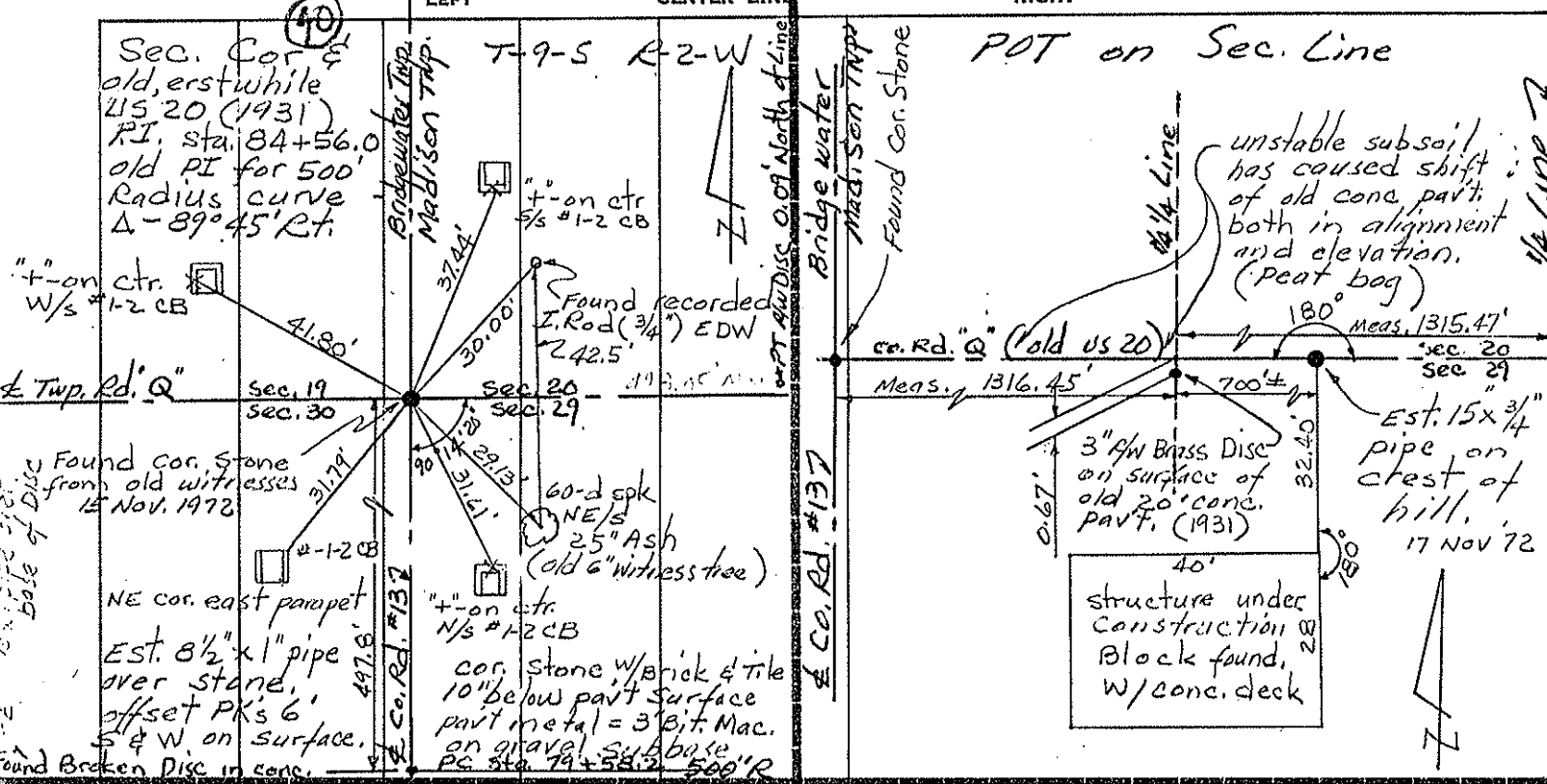
44.69

65.55

PERSONNEL	TITLE	PERSONNEL	TITLE
Red Beach			
Newcomb			
Knape			

COUNTY Williams DATE Nov '72
 S. R. US 20 WEATHER _____
 SEC. Madison Twp. TEMP. _____

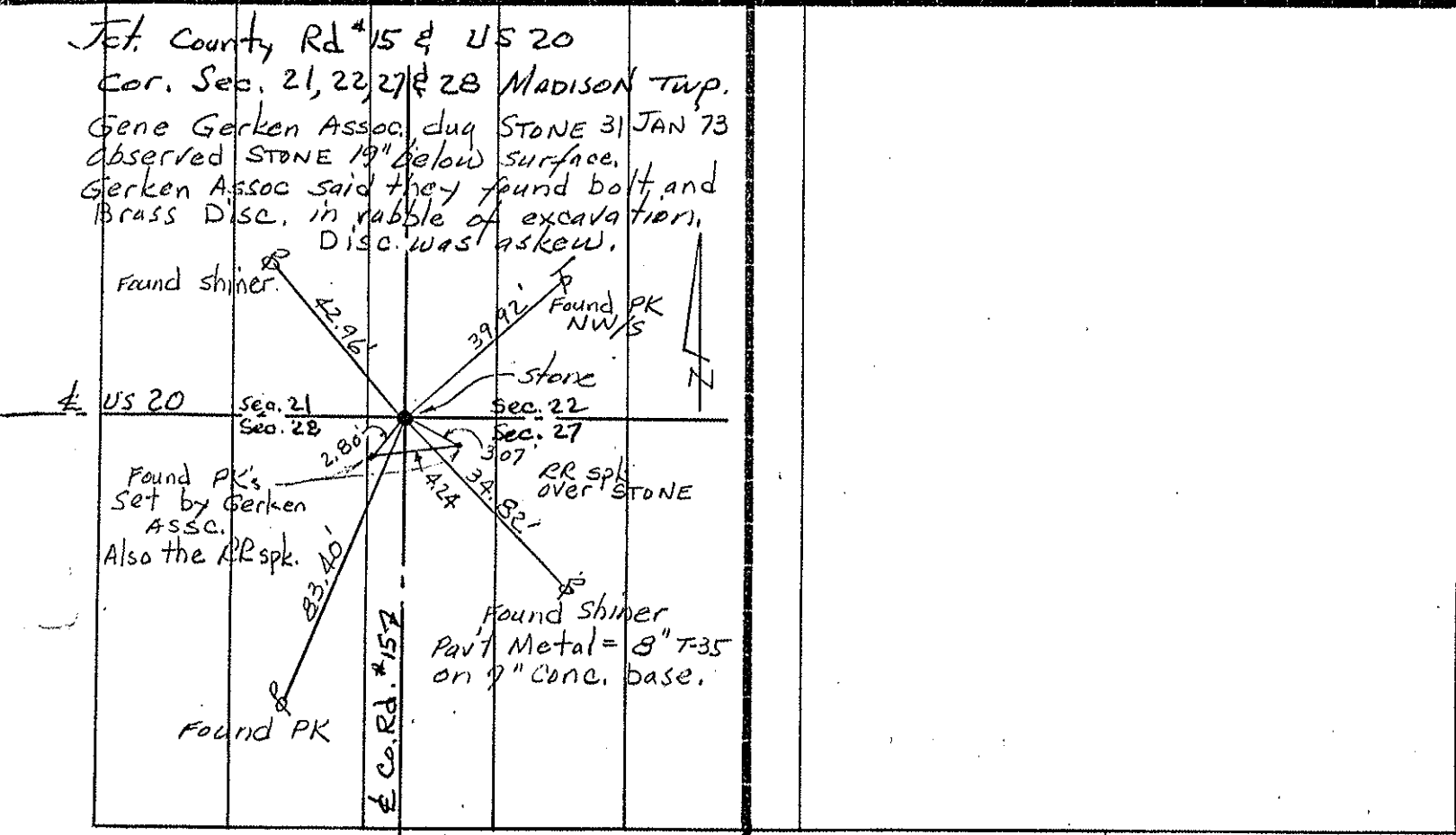
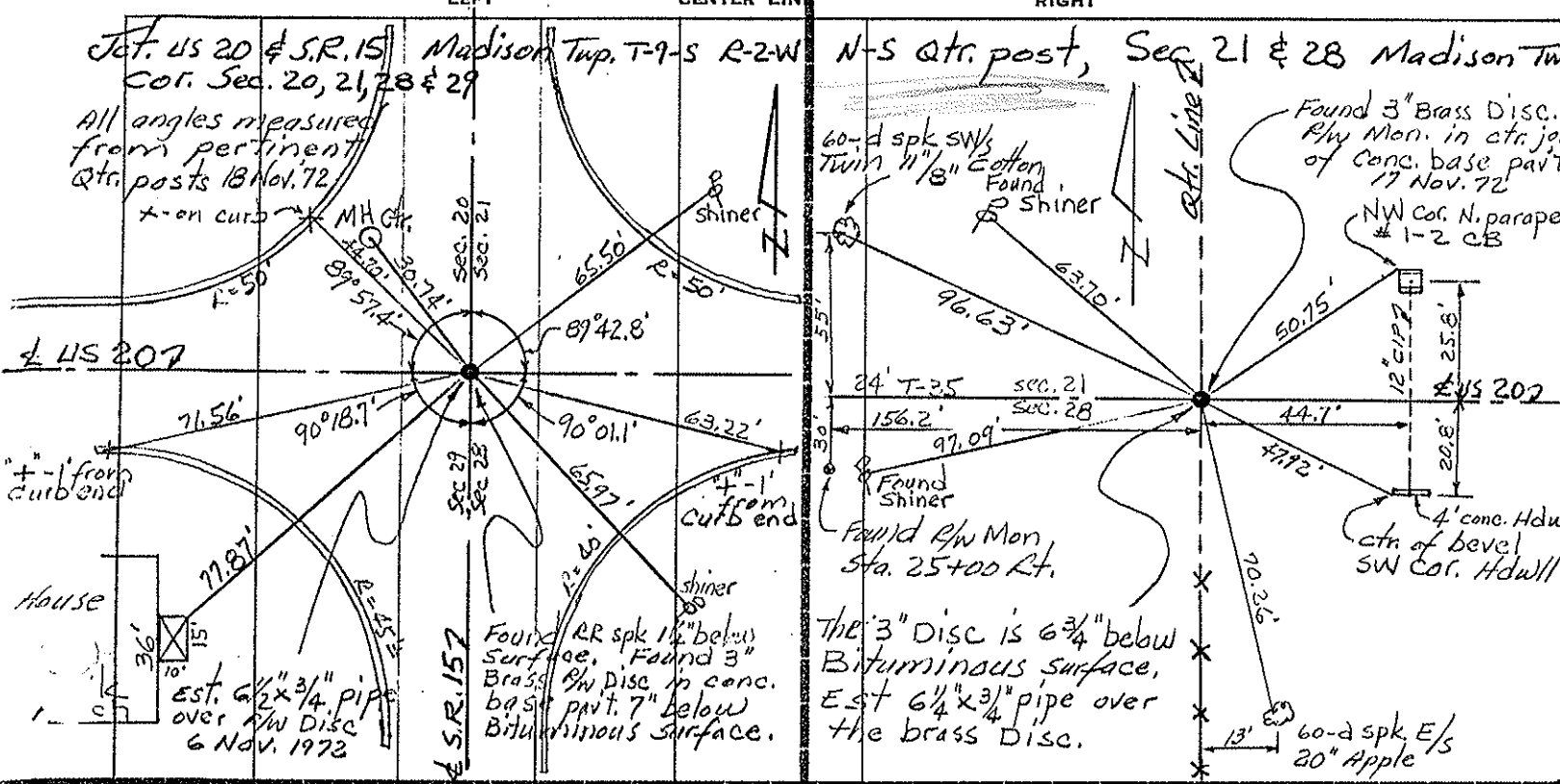
DESCRIPTION _____ CONTROL POINTS _____ JOB NO. _____



PERSONNEL	TITLE	PERSONNEL	TITLE
Red Beach			
Newcom 10			
Knape			

COUNTY Williams DATE Nov 72
 S. R. US 20 WEATHER _____
 SEC. Madison Twp. TEMP. _____

DESCRIPTION CONTROL POINTS JOB NO. _____



PERSONNEL	TITLE	PERSONNEL	TITLE	COUNTY	DATE	WEATHER	TEMP.
Louys				Wi.	7-22-58	Cloudy	75°
Persefall							
Wise				S. R. 15			
Krohn				From Mich LINE			
				SEC TO U.S. Rt. # 20			

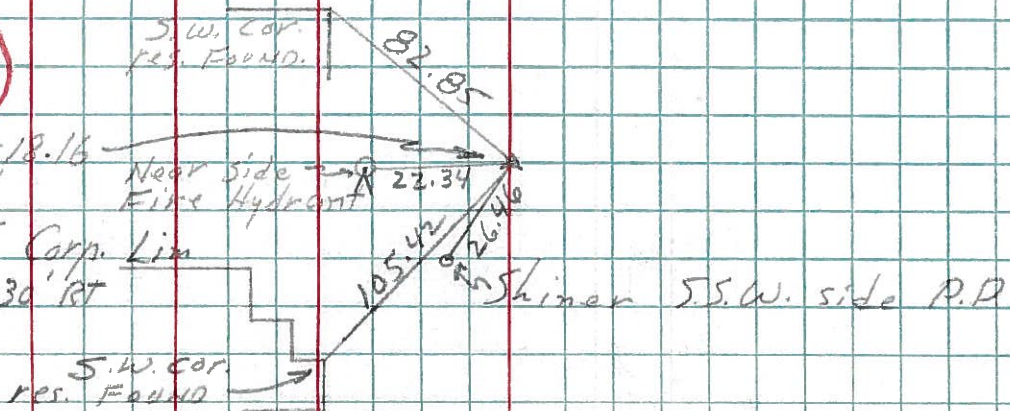
DESCRIPTION Re-Check of Witnesses JOB NO. _____

LEFT CENTER LINE RIGHT

217 (12)
 P.I. sta 136+72.7 =
 Int. of U.S. Rt. 20
 & Ohio S.R. #15

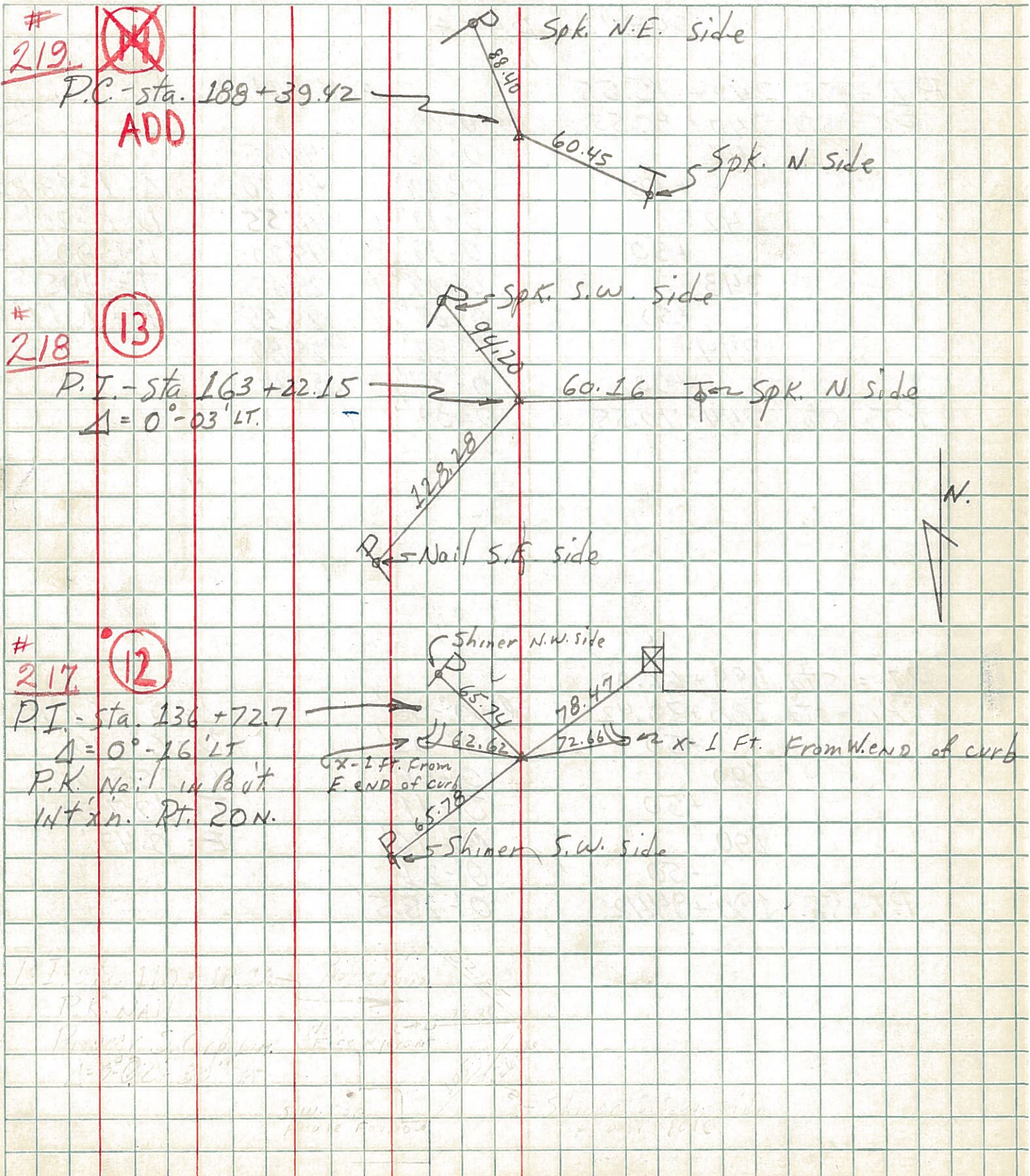
FOR REFERENCES see P. 15 sect.
 From Rt. 20 to Bryan
 N. Corp. LINE.

216 (11)
 P.I. sta 140+18.16
 P.K. Nail
 Pioneer S. Corp. Lim
 $\Delta = 0^{\circ} 02' 30''$ RT



PERSONNEL	TITLE	PERSONNEL	TITLE	COUNTY	DATE	WEATHER	TEMP.
Louys				Wi	7-22-58	Cloudy	75°
Pessefall				S. R. 15			
Wise				From Rt. #20 to			
Krohn				SEC. Bryan N. Corp. Line			

DESCRIPTION: Re-check of witnesses.



PERSONNEL TITLE PERSONNEL TITLE

COUNTY Wi.

DATE _____

S. R. 15

WEATHER _____

SEC. _____

TEMP. _____

DESCRIPTION Witnesses to Control Points

JOB NO. _____

LEFT CENTER LINE RIGHT

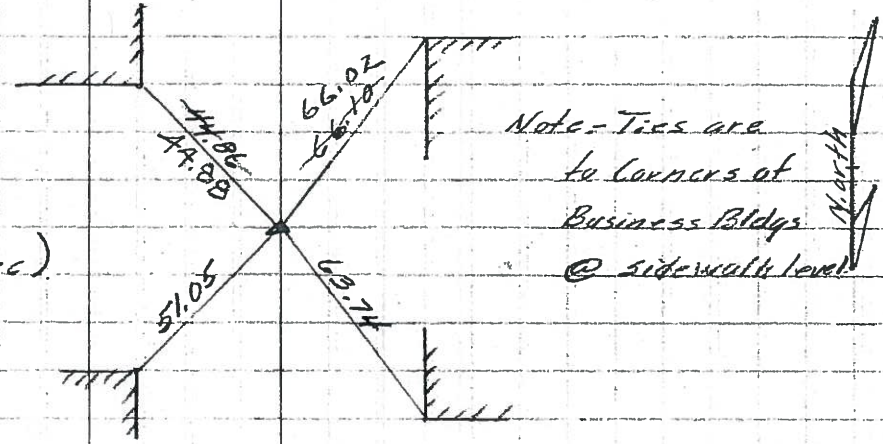
Sta 16+3+22.15 (R.R. Spk) see survey dated 1953 → NE. cor. Porch Found.

Sta 136+72.7 (Insect Rt #20)
Found P.K Nail **12**
 $\Delta = 0^{\circ} 14' Lt.$
69.86 Shiner SW. side T.P. 40.55 Shiner S.E. side T.P.

11 SW. Cor. House Found.
82.89

Sta 110+18.16 (Pioneer "S. Corp Line")
Found I.P. (in 12"x12" Conc) Near side base of Fire Hyd.
 $\Delta = 0^{\circ} 02' 30" Rt.$
22.34 Shiner SW. side P.P. 26.40

7
Sta 80+87.17 (back) =
Sta 83+66.40 (ahead)
Found I.P. (in 12"x12" Conc)
 $\Delta = 0^{\circ} 20' Lt.$



4
Sta 54+36.52 (Pioneer "N. Corp Line")
Found I.P. (in 12"x12" Conc)
 $\Delta = 0^{\circ} 13' Rt.$
87.05 Shiner N. side T.P. 60.74 Shiner N. Side T.P. 34.80 Shiner S.E. side T.P.