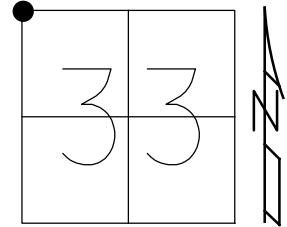


O.D.O.T. DISTRICT 2 SURVEY OFFICE (USE ONLY)

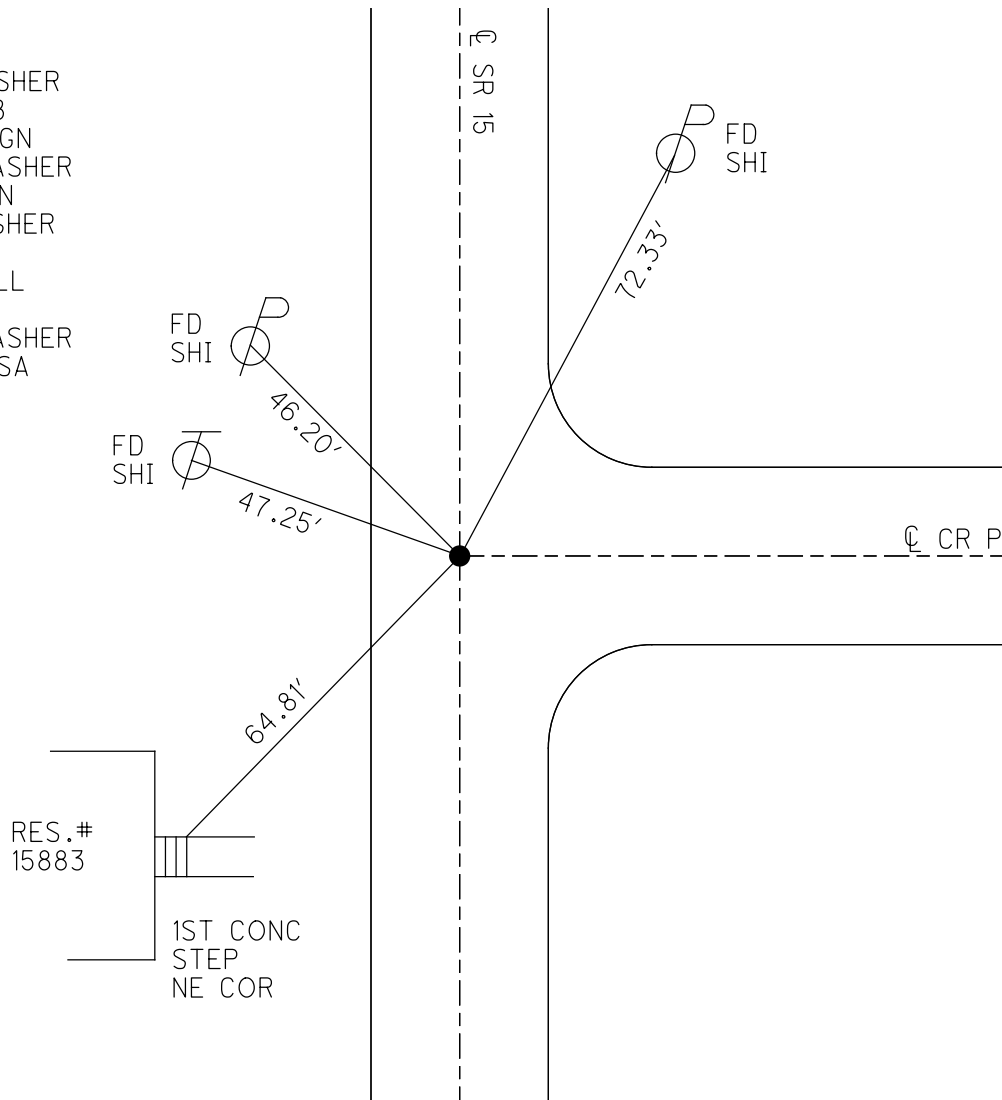
PERSONNEL _____ REFERENCE NO. 14 SHEET 19 OF 40
 NOTES NIESE DATE 4/28/22 ROUTE SR 15
 H.C. AUBLE WEATHER SUNNY COUNTY WILLIAMS
 R.C. PARADYZ TEMP. 40° TOWNSHIP MADISON
 DWG BY RHOADES PID 95786 SECTION 33
 T 9 S R 2 W

TYPE MONUMENT MAG/WASHER
 ON SURFACE - ~~BELOW~~ ON
 OFFSET 0.3' LT : ~~RT~~
13.5' TO RT EDGE PAVEMENT
 STATION: 186+83.99



HORZ.DATUM: NAD83 2011 GEOID: NAVD88 2012B
 GRID: NORTHING: 729569.231 EASTING: 1407367.660

RECORD:
 FD P.K./WASHER
 8/31/88, MB
 5/30/07, RGN
 SET MAG/WASHER
 9/4/07, RGN
 FD MAG/WASHER
 REF14
 3/24/20, JLL
 4/28/22
 SET MAG/WASHER
 9/20/22, DSA

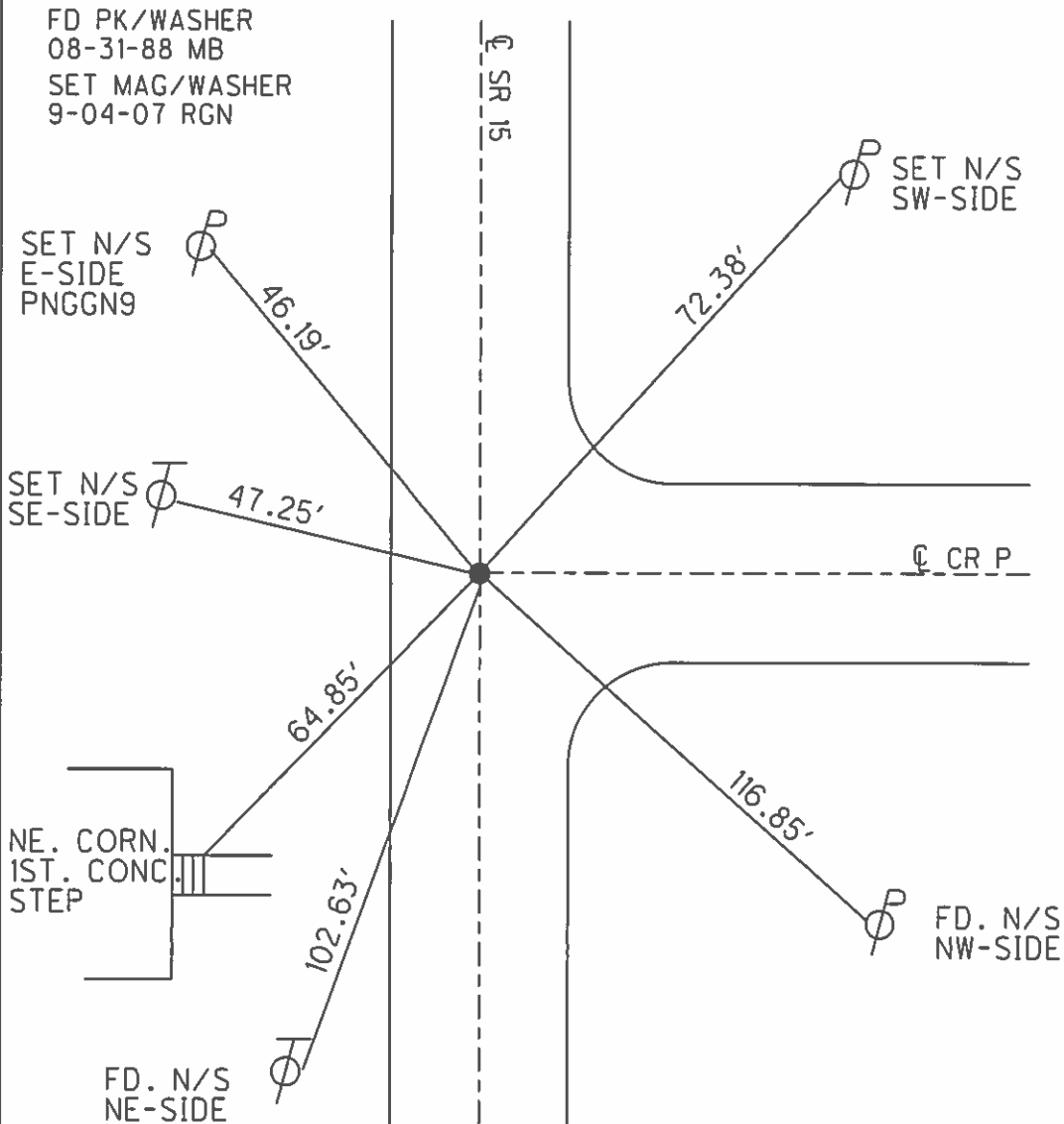
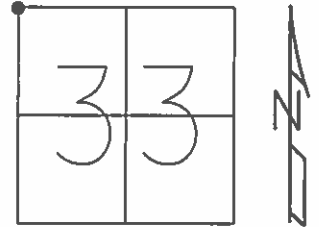


O.D.O.T. DISTRICT 2 SURVEY OFFICE (USE ONLY)

PERSONNEL _____ REFERENCE NO. 14 SHEET 18 OF 39

NOTES NUHFER _____ DATE 5/30/07 ROUTE SR 15
 H.C. HUSS _____ WEATHER SUNNY COUNTY WILLIAMS
 R.C. HOUESHELL _____ TEMP. 92° TOWNSHIP MADISON
 _____ SECTION 33
 _____ T 9 S R 2 W

TYPE MONUMENT _____ P.K./WASHER _____
 ON SURFACE - ~~BELOW~~ ON _____
 LEFT - ☉ PAV'T - ~~RIGHT~~ 0.7' EAST, ON ☉ CR P
13.5' TO RT EDGE PAVEMENT
 S.L.M. 186+92
 GRID: NORTHING: 729569.165 EASTING: 1407367.535



O.D.O.T. DISTRICT 2 SURVEY OFFICE

PERSONNEL _____

REFERENCE NO. 14

SHEET _____ OF _____

NOTES BARNHISEL

H.C. Lochake

R.C. Reed

DATE 8-5-88

WEATHER SUNNY

TEMP. +96°

ROUTE 15

COUNTY Williams

TOWNSHIP Madison

SECTION 33

T 9 S R 2 W

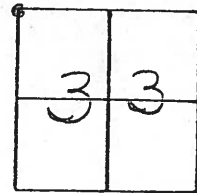
TYPE MONUMENT Sm RR Spk

ON SURFACE - BELOW yes

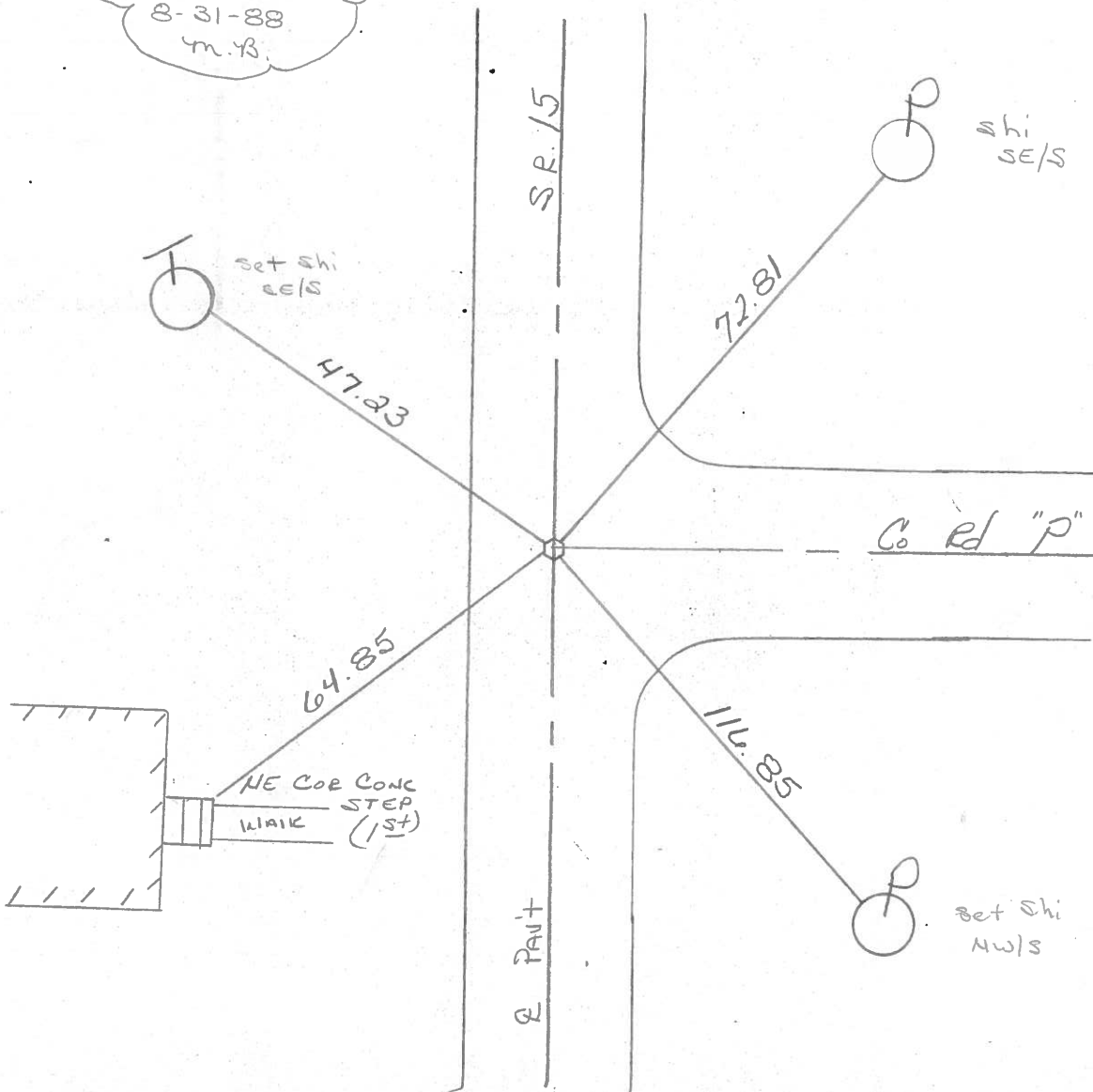
LEFT - ☉ PAV'T. - RIGHT yes - Both

124 TO R EDGE PAVEMENT

S.L.M. 186 + 92



Set P.K. & Washer
8-31-88
m.B.



County WILLIAMS S.R. 15

Date 5-13-82

Township MADISON

Weather CLEAR

Section 33

Temp. +80°

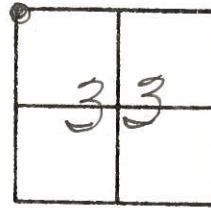
T9, R2

Personnel HOFFMAN

LOEHRKE

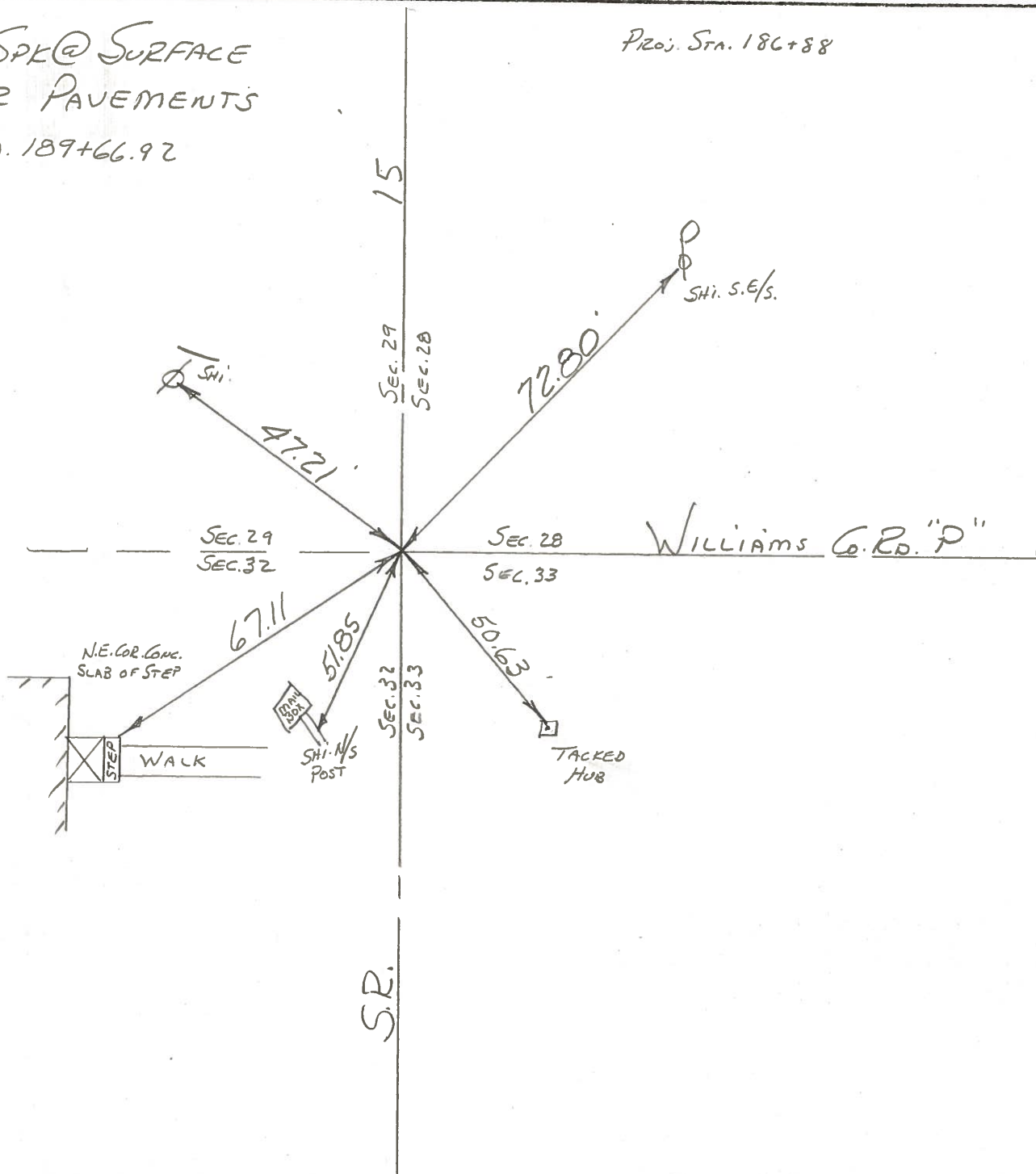
HOUSEHOLDER

36 (14)



FD. P.R. SPK @ SURFACE
of ID CTR PAVEMENTS
P.I. STA. 189+66.92

Proj. Sta. 186+88



County WILLIAMS S.R. 15

Date 11-28-79

Township MADISON

Weather CLOUDY

Section 33

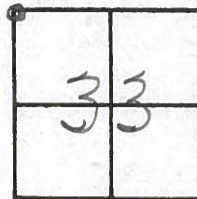
Temp. +32°

~~T9N~~, R2E

Personnel BURNSIDE

SMITH

MEAD

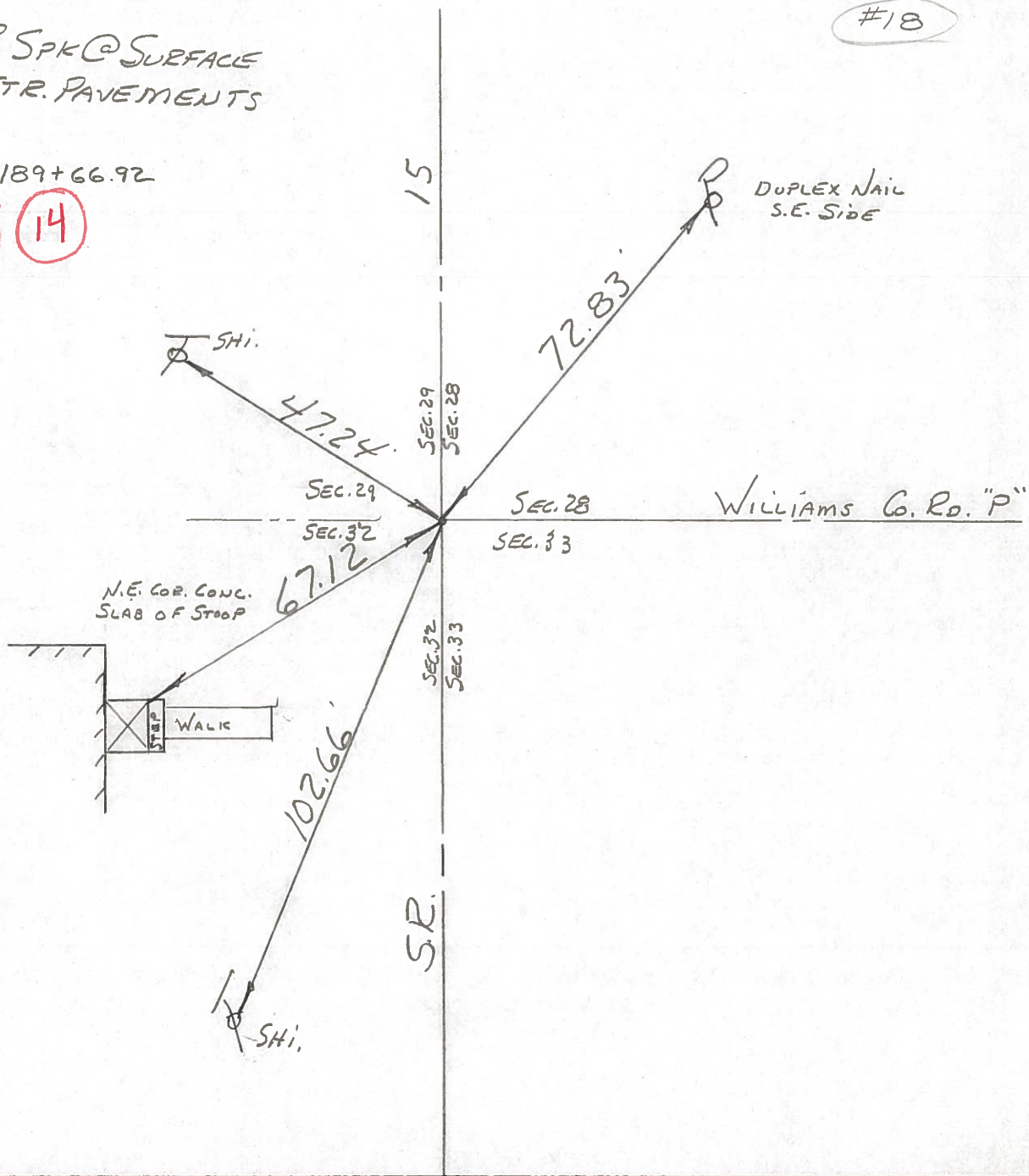


FD. R.P. SPK @ SURFACE
E IN CTR. PAVEMENTS

#18

P.I. STA. 189+66.92

~~26~~ (14)



PERSONNEL TITLE PERSONNEL TITLE

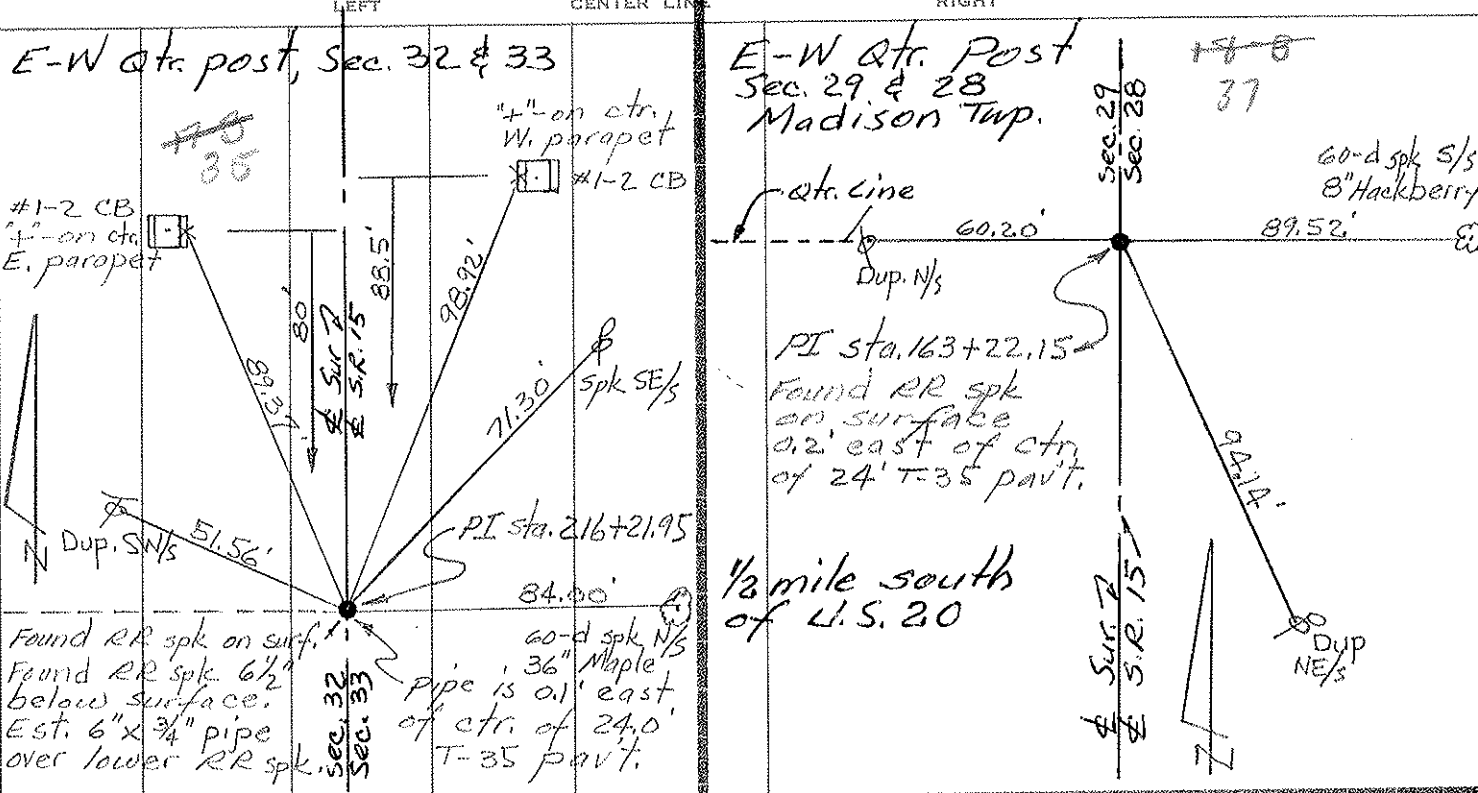
COUNTY Williams DATE Sept. '72

Red Beach
Newcomb
Knappe

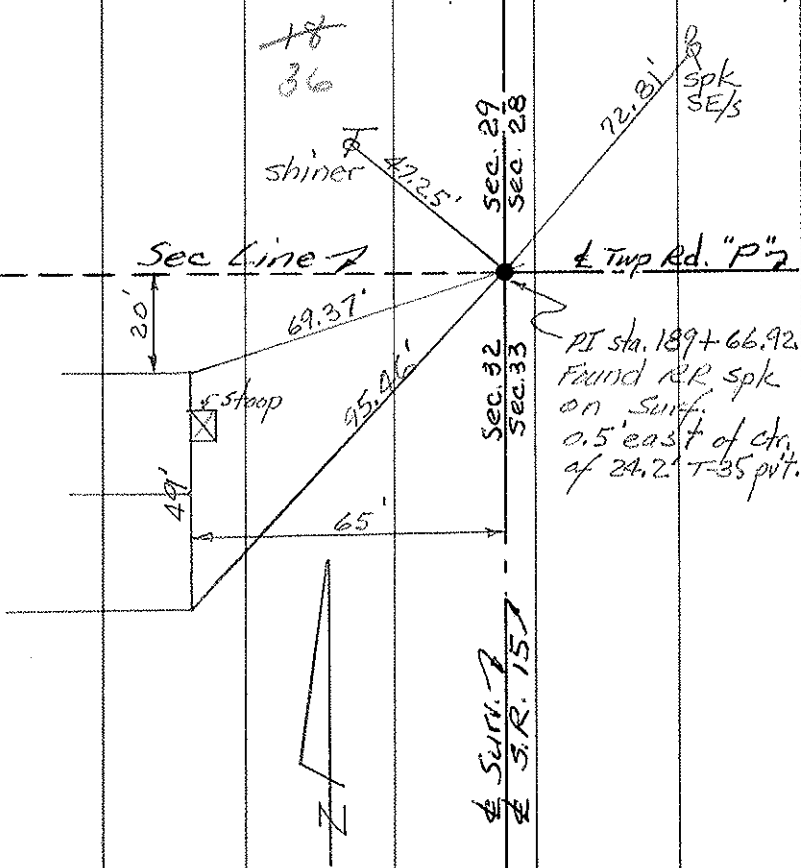
S. R. 15 WEATHER _____

SEC. Madison Twp. TEMP. _____

DESCRIPTION CONTROL POINTS JOB NO. _____



Sec. Cor. 28, 29, 32 & 33 Madison Twp



PERSONNEL TITLE PERSONNEL TITLE

Louys _____
 Perssefall _____
 Wise _____
 Krohn _____

COUNTY W.I.

DATE 7-22-58

S. R. 15

WEATHER Cloudy

From Rt. #20 to

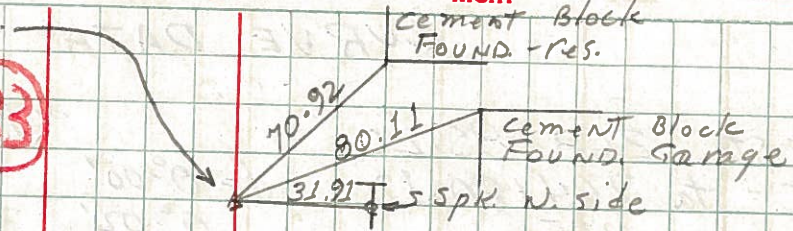
SEC. Bryan N. Corp. Line

TEMP. 75°

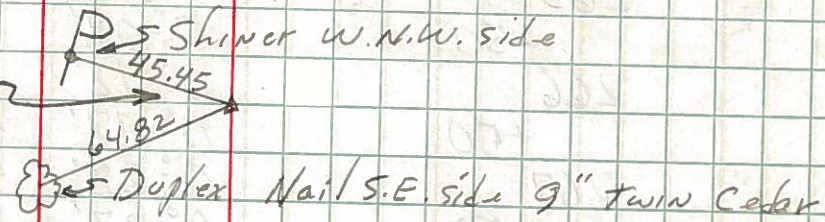
225 DESCRIPTION Re-check of witnesses.

LEFT CENTER LINE RIGHT JOB NO.

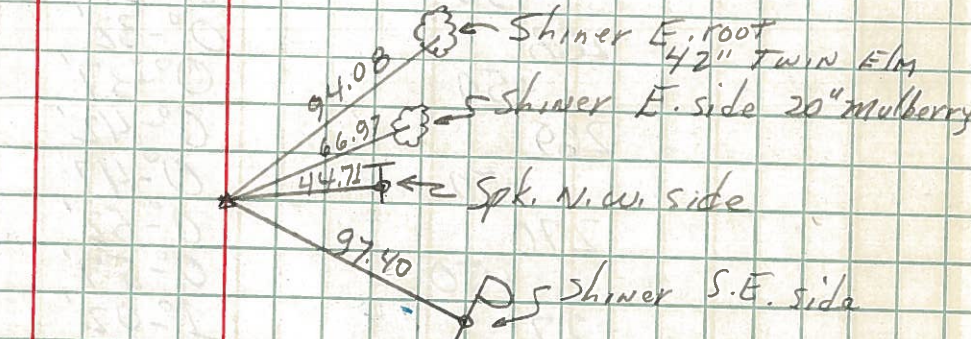
P.I. sta. 242+75.55
 $\Delta = 1^\circ - 18' RT$
 R.R. Spk. in Pav't. **(33)**



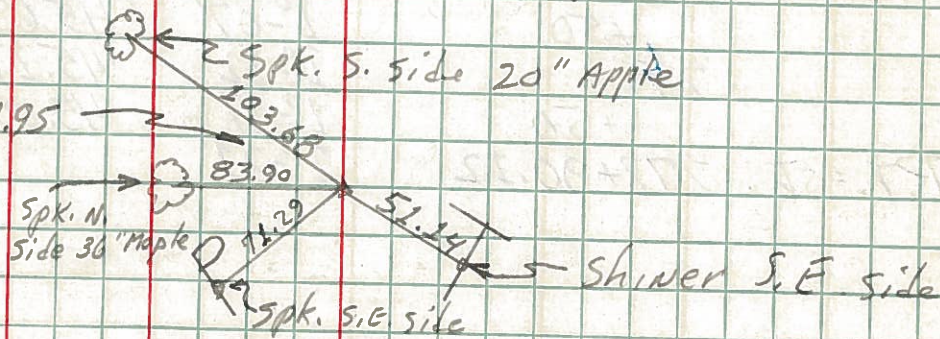
224 ADD
 P.C. sta. 240+80.55
 Shiner in Pav't.



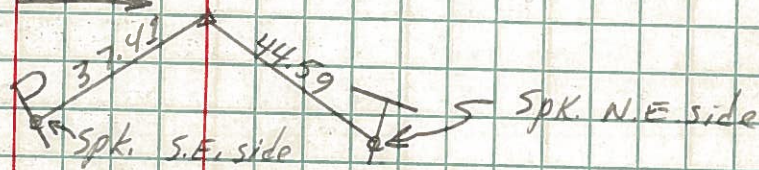
223 **(34)**
 P.I. sta. 231+91.2
 Small R.R. Spk.



222 **(15)**
 P.I. sta. 216+21.95
 $\Delta = 0^\circ - 14' LT$
 Small R.R. Spk.



221 ADD
 P.T. sta. 190+94.92



220 **(14)**
 P.I. sta. 189+66.92
 $\Delta = 0^\circ - 51' RT$

