

O.D.O.T. DISTRICT 2 SURVEY OFFICE (USE ONLY)

PERSONNEL

REFERENCE NO. 15

SHEET 20 OF 40

NOTES NIESE DATE 4/28/22
 H.C. AUBLE WEATHER SUNNY
 R.C. PARADYZ TEMP. 40°

ROUTE SR 15
 COUNTY WILLIAMS
 TOWNSHIP MADISON
 SECTION 33

DWG BY RHOADES PID 95786

T 9 S R 2 W

TYPE MONUMENT MAG NAIL

ON SURFACE - ~~BELOW~~ ON

OFFSET 0.3' PAVEMENT RT : RT

12.0' TO RT EDGE PAVEMENT

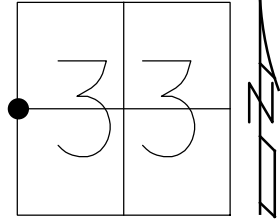
STATION: 213+38.49

HORIZ.DATUM: NAD83 2011

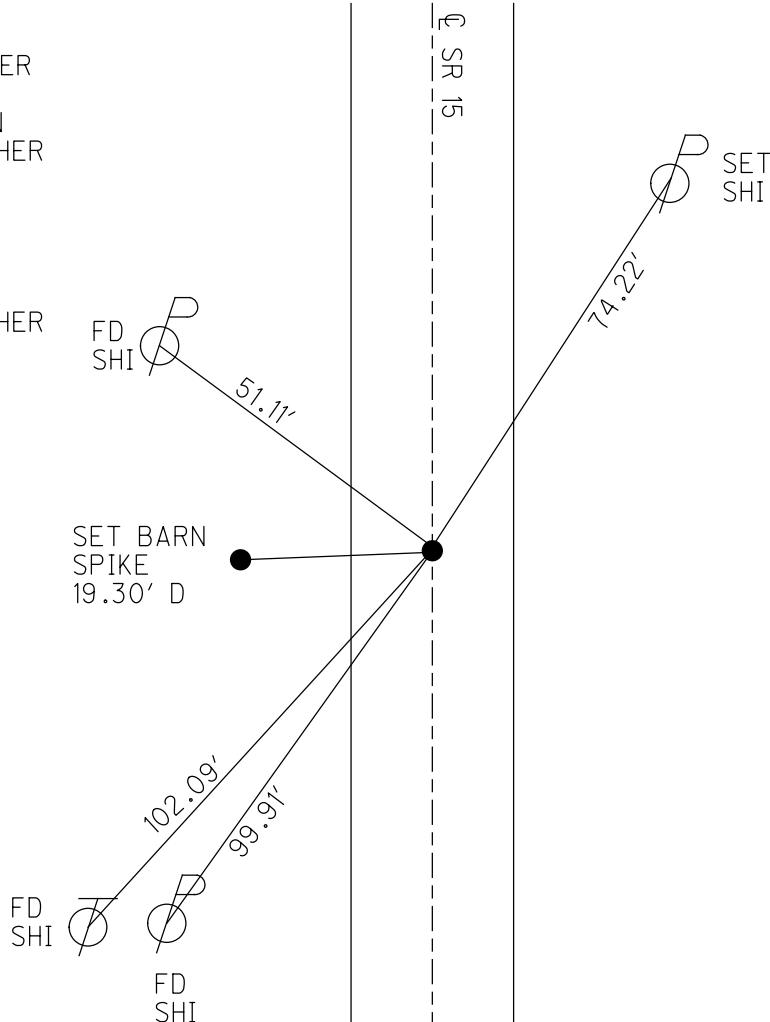
GEOID: NAVD88 2012B

GRID: NORTHING: 726916.166

EASTING: 1407280.299



RECORD:
 FD P.K./WASHER
 8/31/88, MB
 5/30/07, RGN
 SET MAG/WASHER
 9/4/07, RGN
 FD MAG NAIL
 REF15
 3/24/20, JLL
 4/28/22
 SET MAG/WASHER
 9/20/22, DSA



O.D.O.T. DISTRICT 2 SURVEY OFFICE (USE ONLY)

PERSONNEL _____ REFERENCE NO. 15 SHEET 19 OF 39

NOTES NUHFER _____ DATE 5/30/07 ROUTE SR 15
 H.C. HUSS _____ WEATHER SUNNY COUNTY WILLIAMS
 R.C. HOUESHELL _____ TEMP. 92° TOWNSHIP MADISON
 _____ SECTION 33
 _____ T 9 S R 2 W

TYPE MONUMENT P.K./WASHER

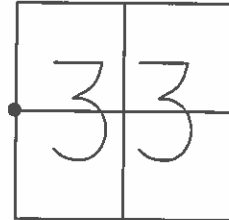
ON SURFACE - ~~BELOW~~ ON _____

~~LEFT~~ - ☉ PAV'T - RIGHT 0.3' WEST

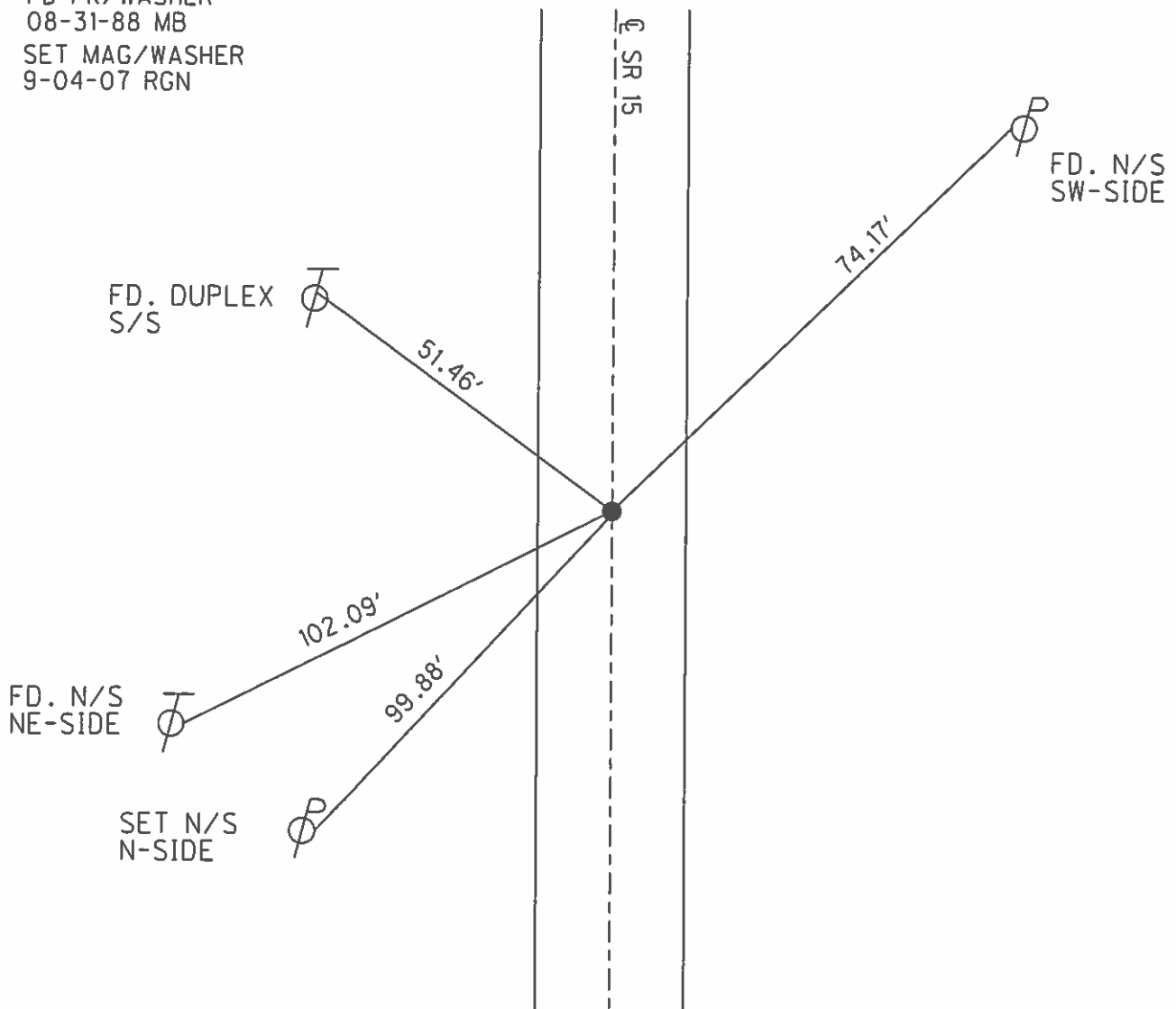
12.0' TO RT EDGE PAVEMENT

S.L.M. 213+47

GRID: NORTHING: 726916.127 EASTING: 1407280.107



FD PK/WASHER
 08-31-88 MB
 SET MAG/WASHER
 9-04-07 RGN



O.D.O.T. DISTRICT 2 SURVEY OFFICE

PERSONNEL _____

REFERENCE NO. 15

SHEET _____ OF _____

NOTES BARNHISEL

H.C. Loehake

R.C. Reed

DATE 8-5-88

WEATHER SUNNY

TEMP. +96°

ROUTE 15

COUNTY Williams

TOWNSHIP Madison

SECTION 33

T 9 S R 2 W

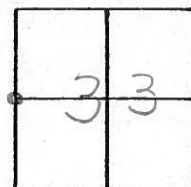
TYPE MONUMENT Sm RR Spk

ON SURFACE - ~~BELOW~~ yes

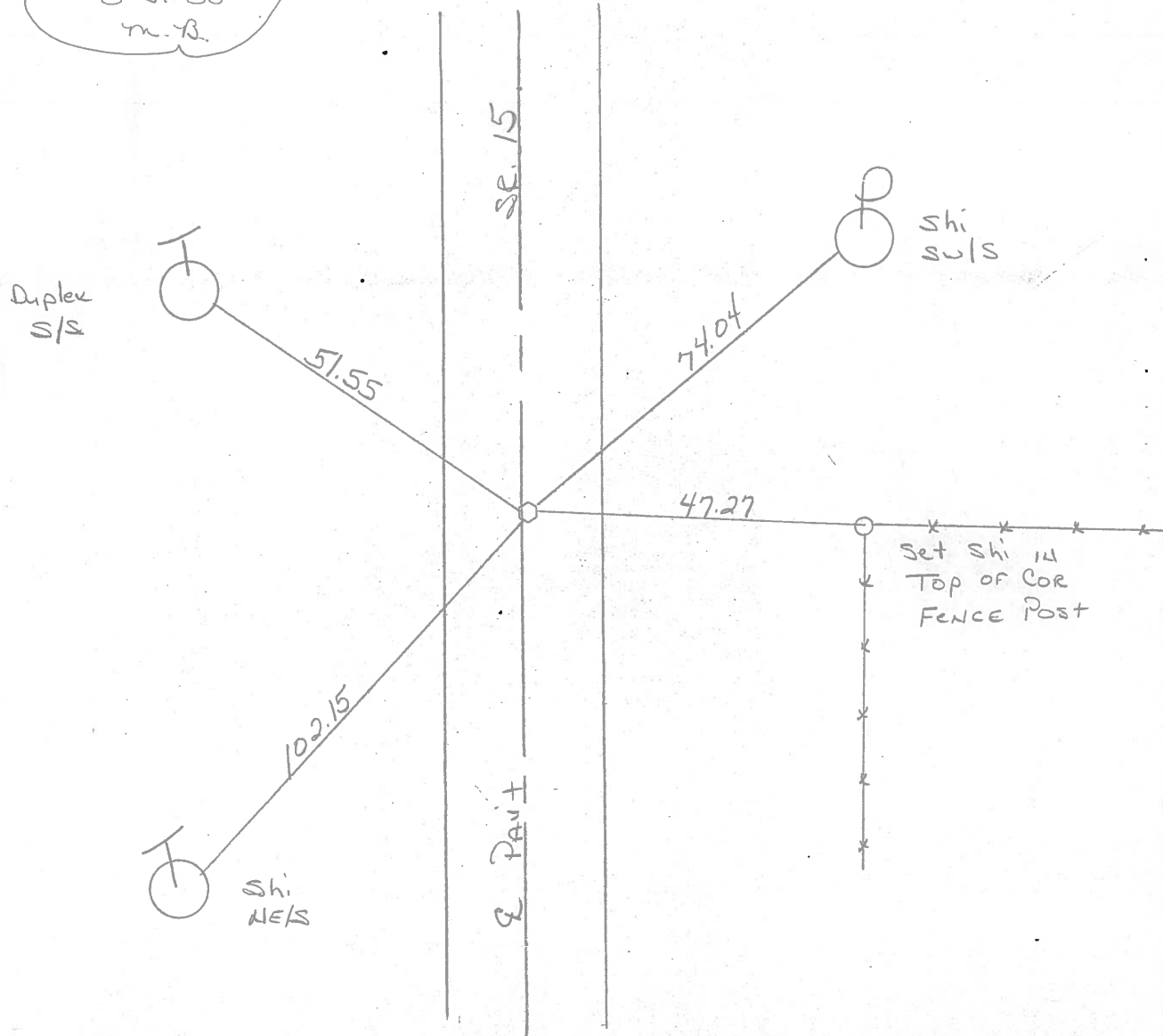
LEFT- & PAV'T. - RIGHT .3

11.7 TO R+ EDGE PAVEMENT

S.L.M. 213+47



Set P.K. & Washer
8-31-88
m.B.



O.D.O.T. DISTRICT 2 SURVEY OFFICE

PERSONNEL _____

REFERENCE NO. 35? SHEET 3 OF _____

NOTES 1. Stone

H.C. D. Curtis

R.C. R. Michalak

DATE 31 Dec. 85

WEATHER Cloudy

TEMP. 37°

ROUTE SR #15

COUNTY Williams

TOWNSHIP Madison

SECTION 33

T _____ R _____

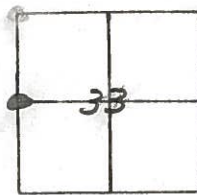
TYPE MONUMENT Small RR Spk.

ON SURFACE - BELOW Surface

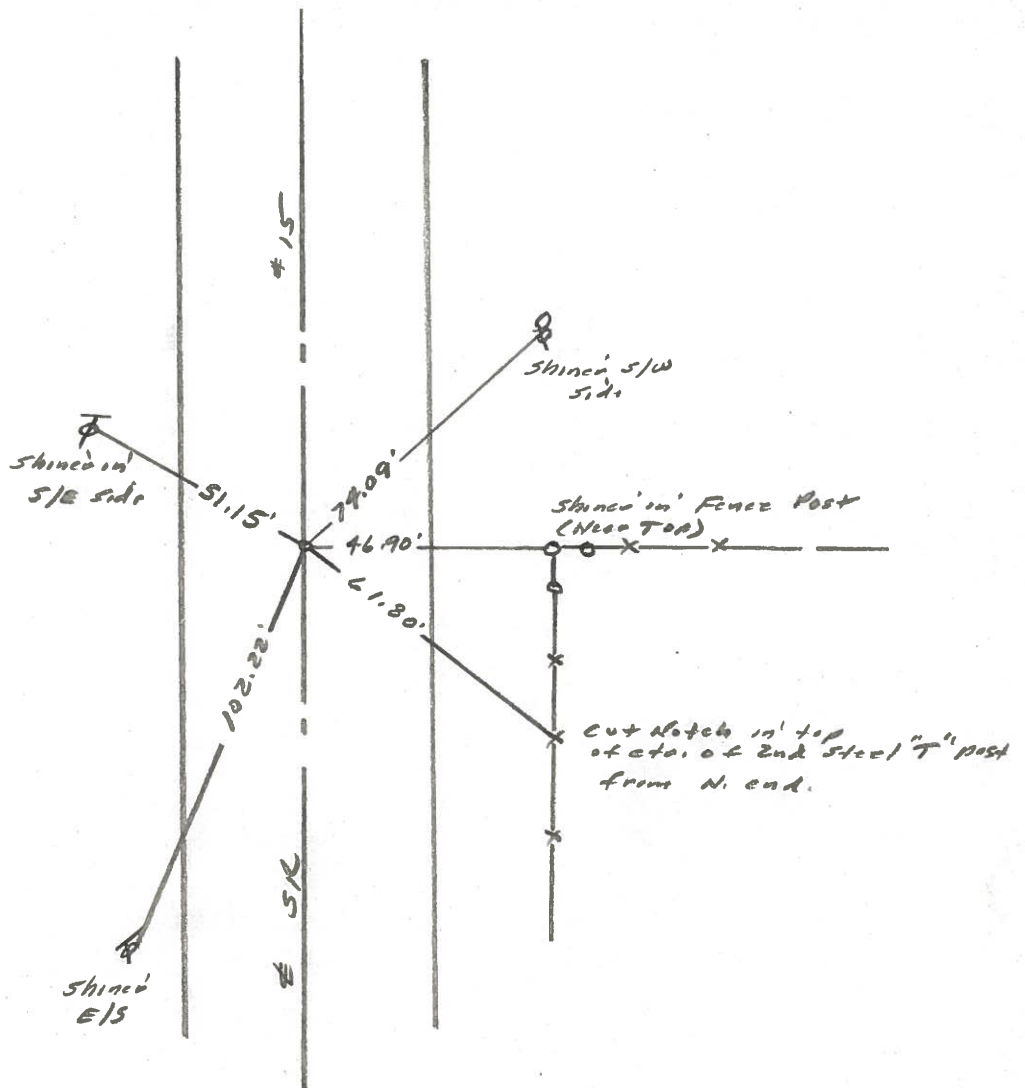
LEFT - & PAV'T. - RIGHT _____

TO _____ EDGE PAVEMENT

S.L.M. _____



15



County WILLIAMS S.R. 15

Date 5-13-82

Township MADISON

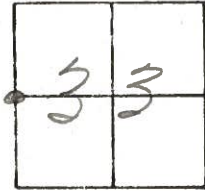
Weather CLEAR

Section 33

Temp. +85°

~~T9N~~, ~~R2E~~

Personnel HOFFMAN



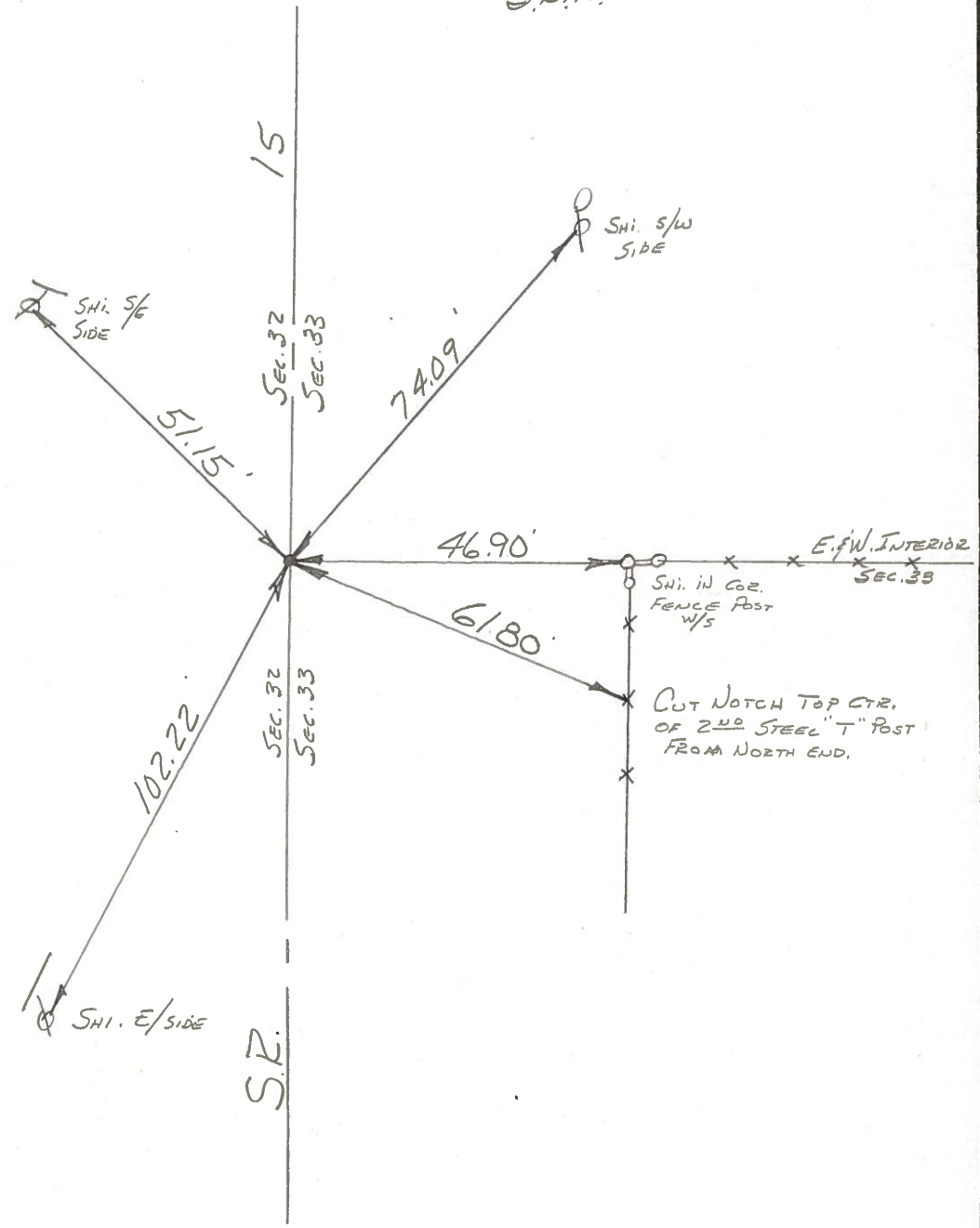
LOEHRKE

HOUSEHOLDER

~~35~~
15

S.L.M. 213+42±

FD. 3/4" I. PIPE @
SURFACE E' ID
CTR. PAVE.



County WILLIAMS S.R. 15

Date 11-28-79 5-13-82

Township MADISON

Weather CLOUDY clear

Section _____

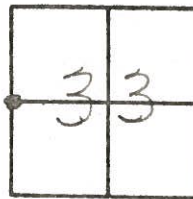
Temp. +32° +85°

~~T9N~~, R2E

Personnel BURNSIDE

SMITH

MEAD



✓
 FD. 3/4" IRON PIPE
 @ SURFACE & IN
 CTR. PAVE.

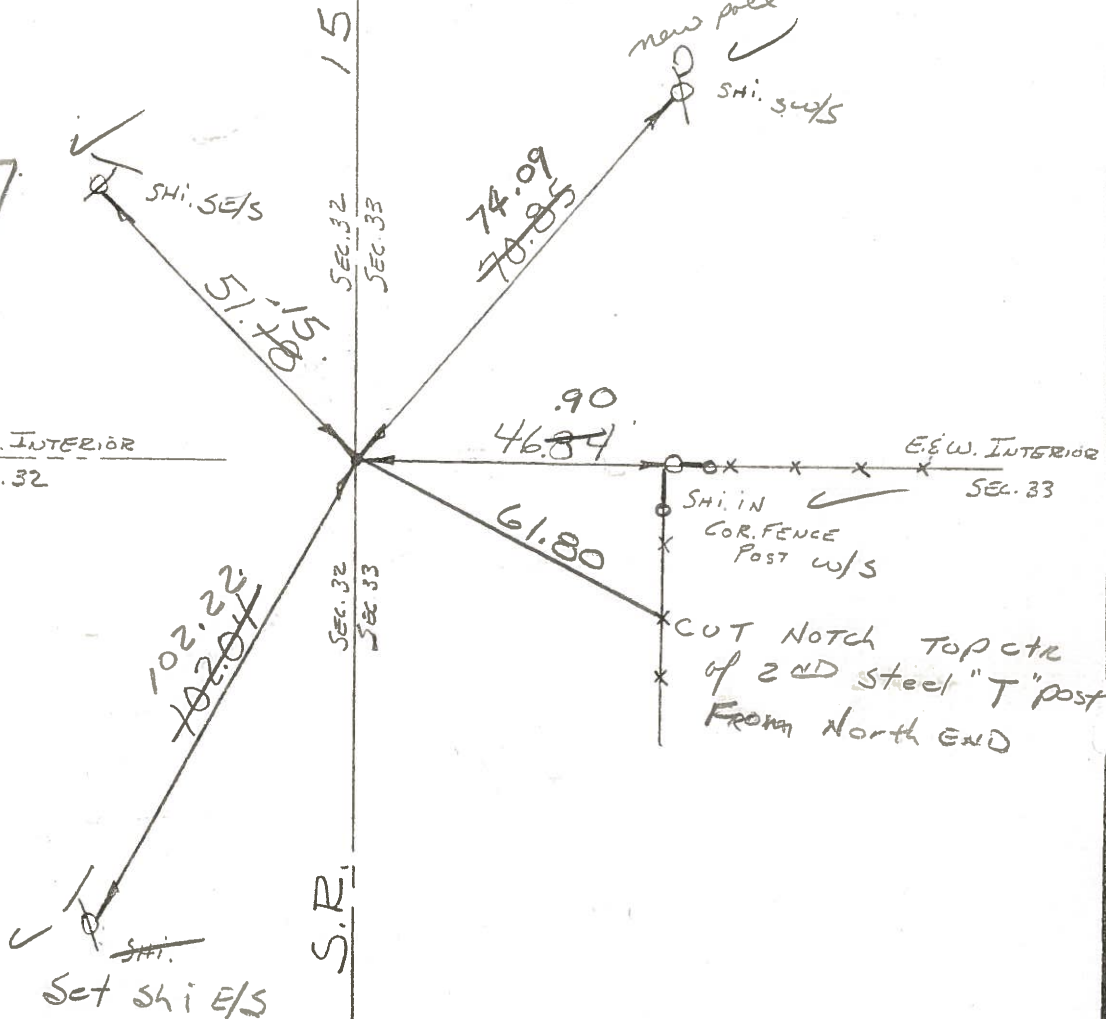
SLM Sta ± 213+42
 12.3 TO W END
 11.7 TO E END

(15) (35)

Set small
 RR SAK
 6-21-82
 SWN

E. & W. INTERIOR
 SEC. 32

E. & W. INTERIOR
 SEC. 33



County WILLIAMS S.R. 15

Date 11-28-79

Township MADISON

Weather CLOUDY

Section _____

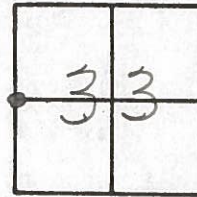
Temp. +32°

~~T9E~~, R2E

Personnel BURNSIDE

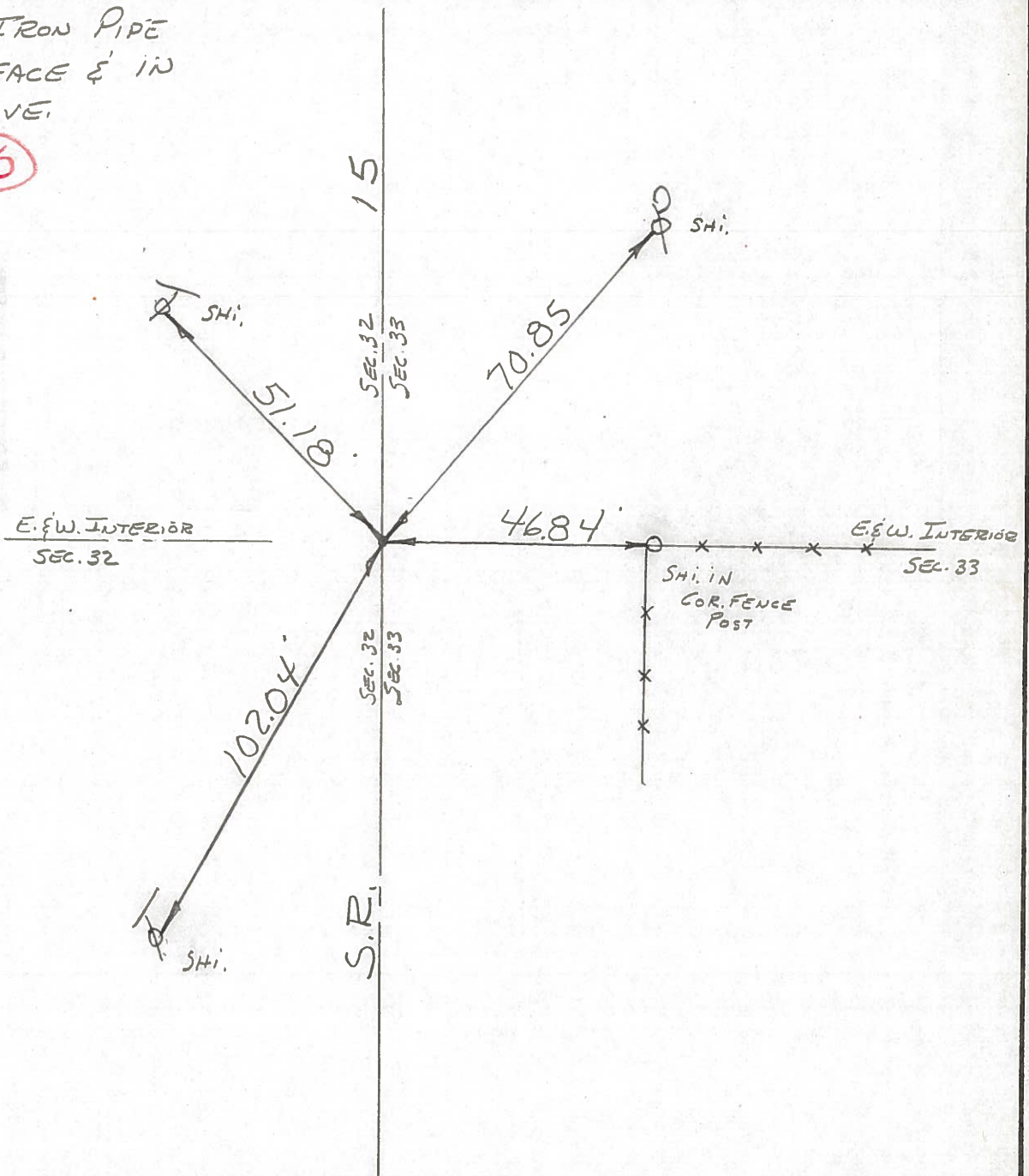
SMITH

MEAD



FD. 3/4" IRON PIPE
 @ SURFACE & IN
 CTR. PAVE.

~~35~~ 15



PERSONNEL TITLE PERSONNEL TITLE

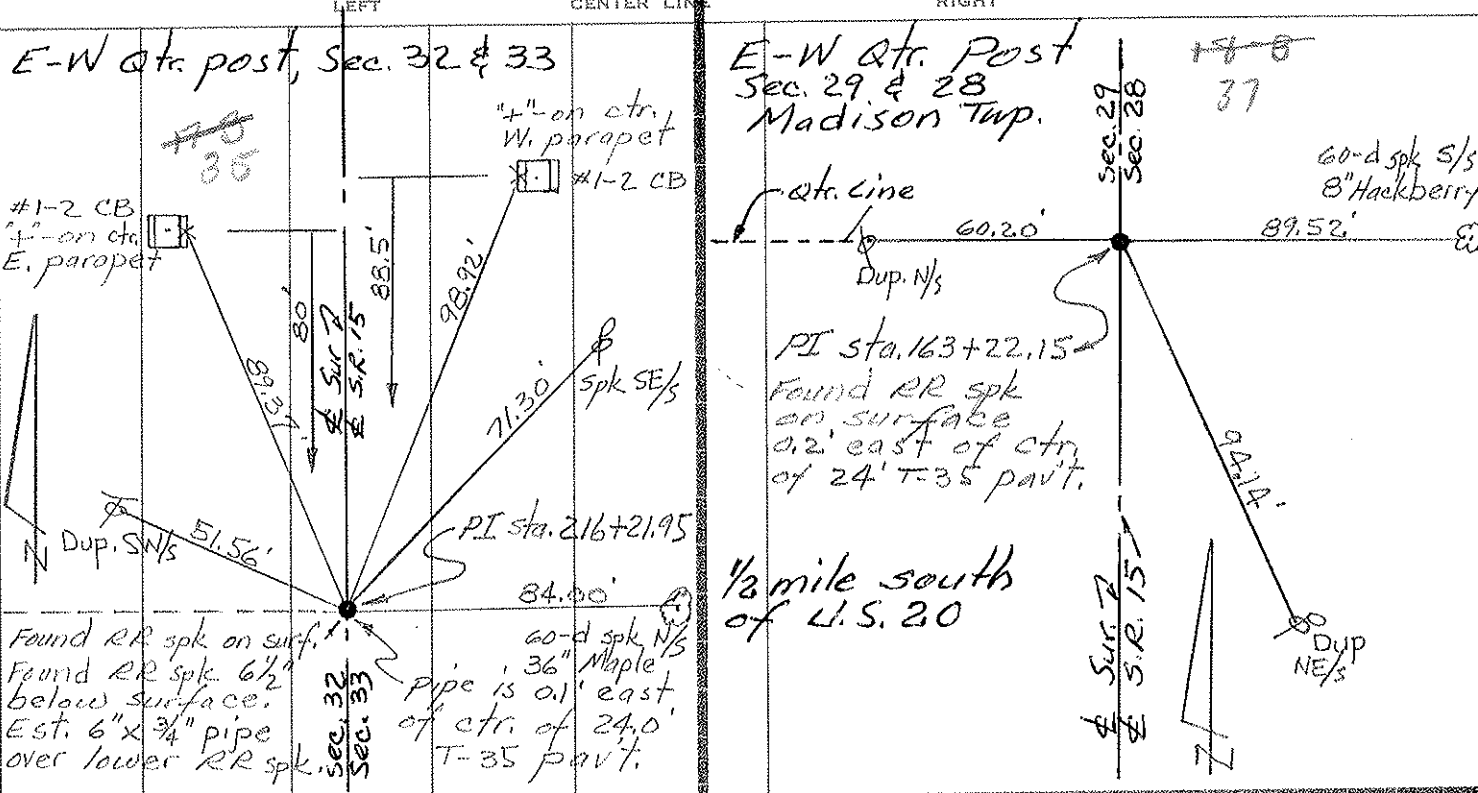
COUNTY Williams DATE Sept. '72

Red Beach
Newcomb
Knape

S. R. 15 WEATHER _____

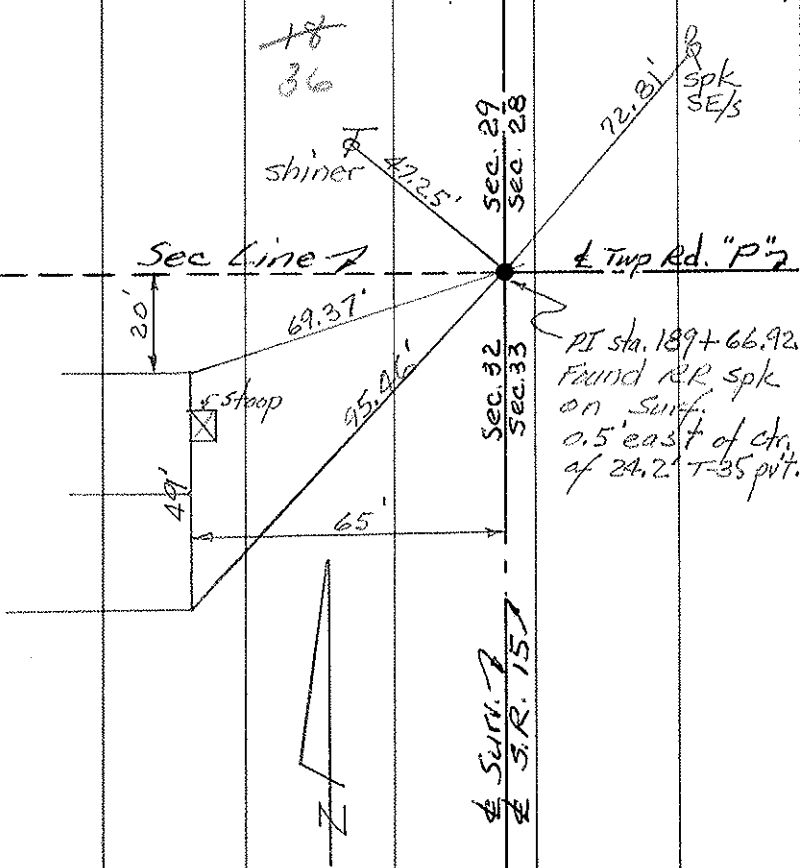
SEC. Madison Twp. TEMP. _____

DESCRIPTION CONTROL POINTS JOB NO. _____



1/2 mile south of U.S. 20

Sec. Cor. 28, 29, 32 & 33 Madison Twp



PERSONNEL	TITLE	PERSONNEL	TITLE	COUNTY	DATE	WEATHER	TEMP.
Louys				W.I.	7-22-58	Cloudy	75°
Persefall				S. R. 15			
Wise				From Rt. #20 to			
Krohn				SEC. Bryan N. Corp. Line			

225 DESCRIPTION Re-check of witnesses. LEFT CENTER LINE RIGHT JOB NO.

