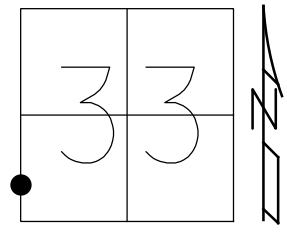


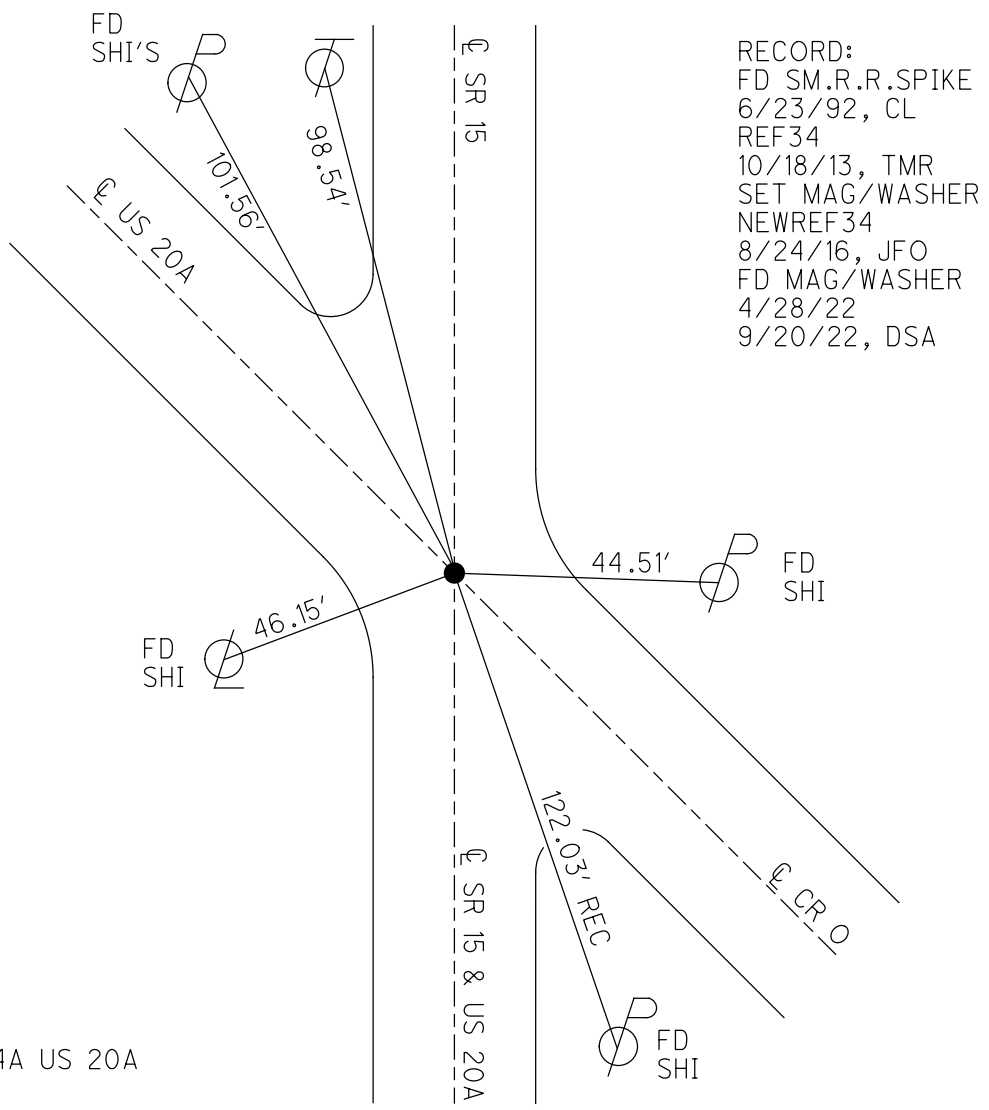
O.D.O.T. DISTRICT 2 SURVEY OFFICE (USE ONLY)

PERSONNEL _____ REFERENCE NO. 34 SHEET 21 OF 40
 NOTES NIESE DATE 4/28/22 ROUTE SR 15
 H.C. AUBLE WEATHER SUNNY COUNTY WILLIAMS
 R.C. PARADYZ TEMP. 40° TOWNSHIP MADISON
 DWG BY RHOADES PID 95786 SECTION 33
 T 9 S R 2 W

TYPE MONUMENT MAG/WASHER
 ON SURFACE - ~~BELOW~~ ON
 OFFSET ϕ PAVEMENT 0.3' ~~RT~~ : RT
- TO - EDGE PAVEMENT
 STATION: 229+07.58



HORIZ.DATUM: NAD83 2011 GEOID: NAVD88 2012B
 GRID: NORTHING: 725347.730 EASTING: 1407235.109



RECORD:
 FD SM.R.R.SPIKE
 6/23/92, CL
 REF34
 10/18/13, TMR
 SET MAG/WASHER
 NEWREF34
 8/24/16, JFO
 FD MAG/WASHER
 4/28/22
 9/20/22, DSA

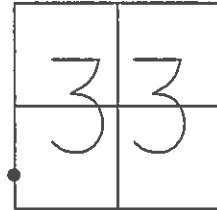
NOTE: REF 4A US 20A

O.D.O.T. DISTRICT 2 SURVEY OFFICE (USE ONLY)

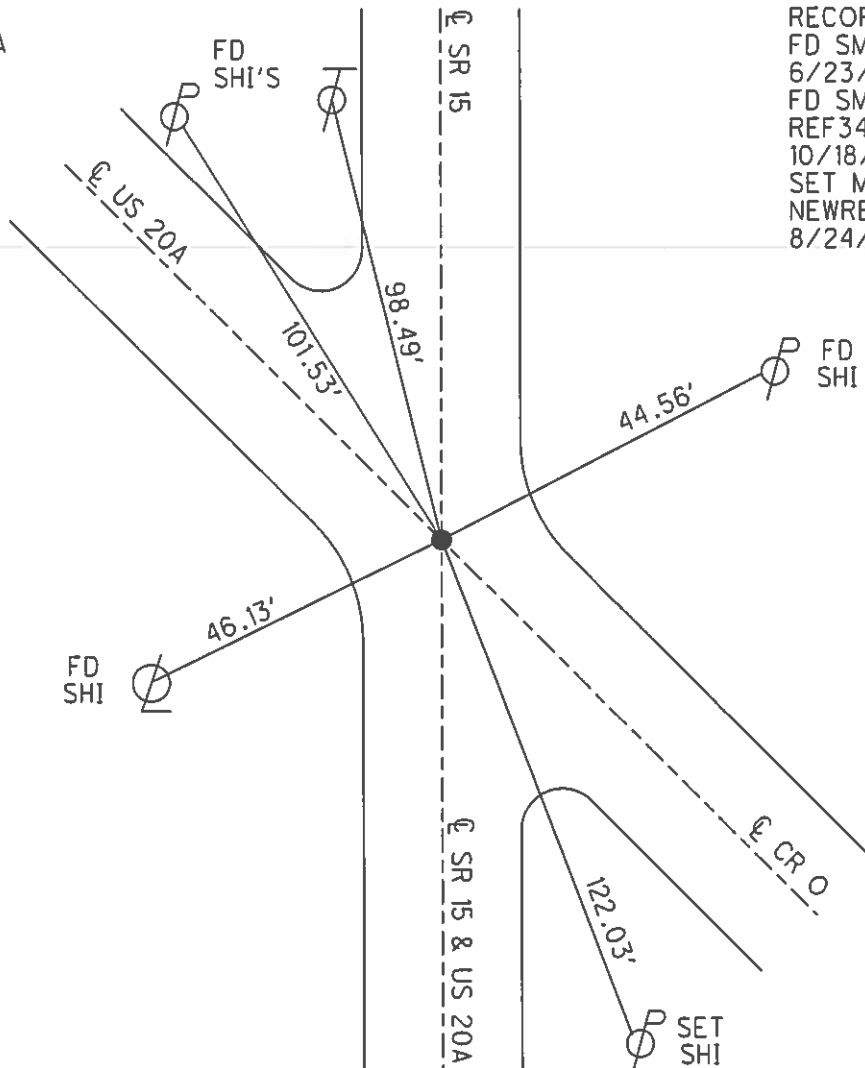
PERSONNEL _____ REFERENCE NO. 34 SHEET 1 OF 40

NOTES LEU _____ DATE 3/29/16 ROUTE SR 15
 H.C. HOMAN WEATHER SUNNY COUNTY WILLIAMS
 R.C. LEU TEMP. 32° TOWNSHIP MADISON
 _____ SECTION 33
 _____ T 10 S R 2 W

TYPE MONUMENT SM.R.R.SPIKE
 ON SURFACE - ~~BELOW~~ ON
~~LEFT~~ - Q PAV'T - ~~RIGHT~~ ON
 _____ TO _____ EDGE PAVEMENT
 S.L.M. 422+92.80



NOTE:
US 20A REF4A



RECORD:
 FD SM.R.R.SPIKE
 6/23/92, CL
 FD SM.R.R.SPIKE
 REF34
 10/18/13, TMR
 SET MAG/WASHER
 NEWREF34
 8/24/16, JFO

GRID: NORTHING: 725347.730 EASTING: 1407235.109

O.D.O.T. DISTRICT 2 SURVEY OFFICE (USE ONLY)

PERSONNEL _____ REFERENCE NO. 34 SHEET 20 OF 39
 NOTES NUHFER DATE 7/26/07 ROUTE SR 15
 H.C. HUSS WEATHER MILD COUNTY WILLIAMS
 R.C. VIETH TEMP. 70° TOWNSHIP MADISON
 _____ SECTION 33
 _____ T 9 S R 2 W

TYPE MONUMENT SM.R.R.SPIKE

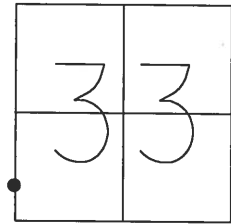
~~ON SURFACE~~ - BELOW 0.2'

~~LEFT~~ - Q PAV'T - ~~RIGHT~~ ON

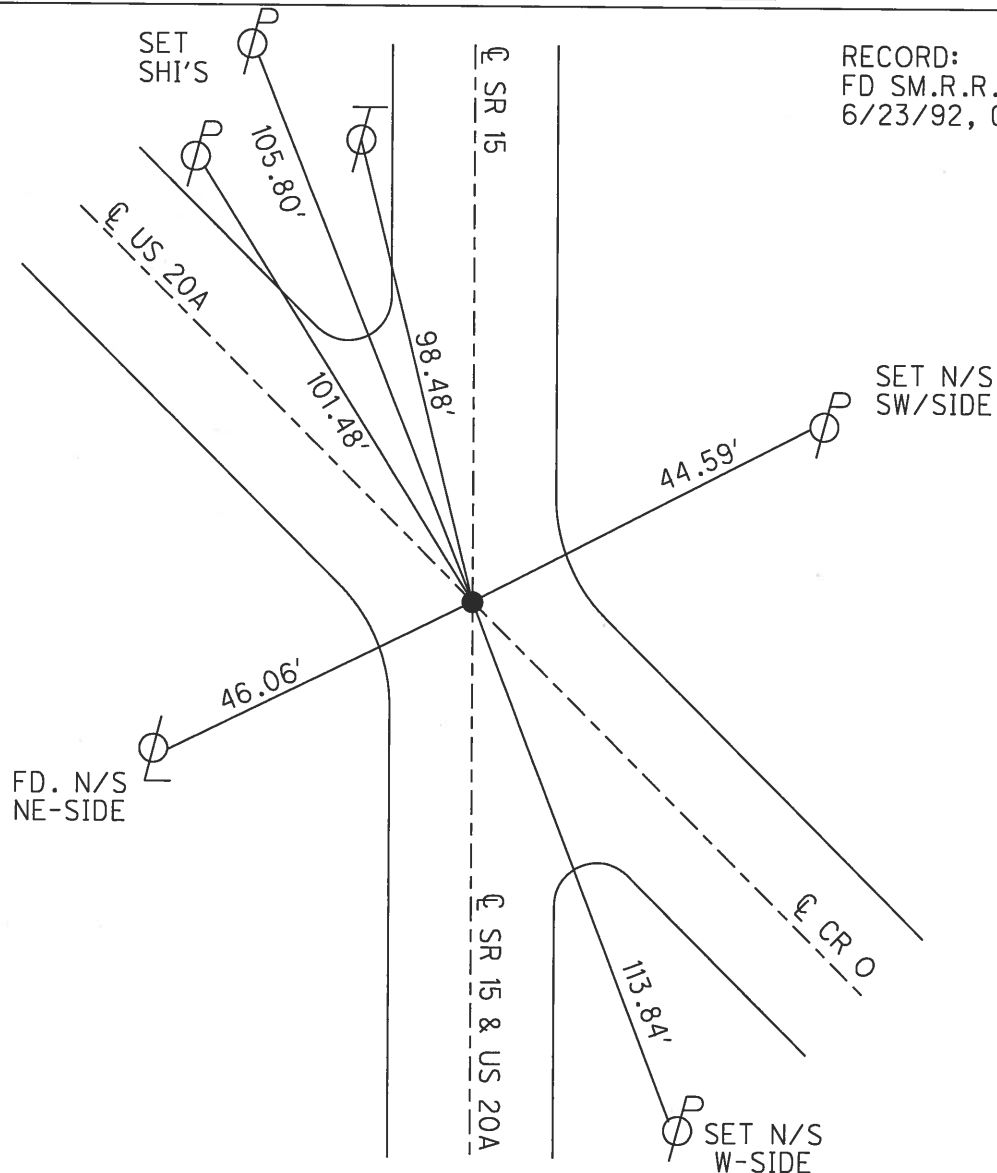
- TO - EDGE PAVEMENT

S.L.M. 231+91.2

GRID: NORTHING: - EASTING: -



RECORD:
 FD SM.R.R.SPIKE
 6/23/92, CL



O.D.O.T. DISTRICT 2 SURVEY OFFICE

PERSONNEL

REFERENCE NO. 34

SHEET 1 OF 16

NOTES LOHRKE

H.C. CURTIS

R.C. FALKOWSKI

ROMETO

DATE 6-23-92

WEATHER RAIN

TEMP. +60

ROUTE SR 15
U.S. 20-A

COUNTY Williams

TOWNSHIP MADISON

SECTION 33

T 10 S R 2 W

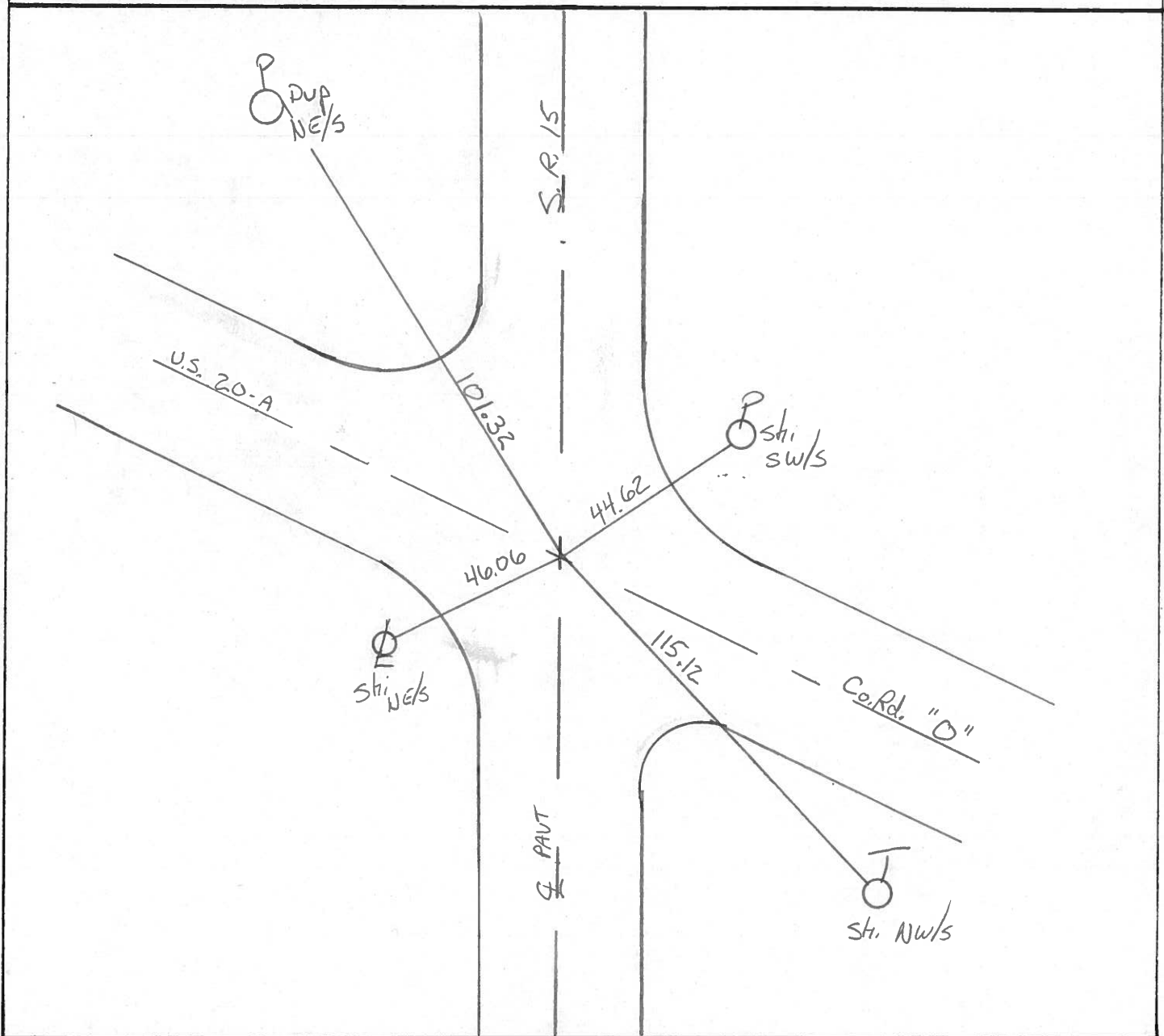
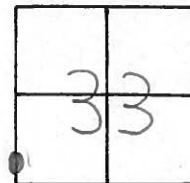
TYPE MONUMENT Sm. R.R. Spike

ON SURFACE - BELOW Yes

LEFT - PAV'T. - RIGHT Yes

TO EDGE PAVEMENT

S.L.M. 60+72



O.D.O.T. DISTRICT 2 SURVEY OFFICE

PERSONNEL

REFERENCE NO. 34

SHEET 2 OF

NOTES 1. Stone

H.C. D. Curtis

R.C. R. Michalski

DATE 31 Dec. 85

WEATHER Cloudy

TEMP. 37°

ROUTE SR #15

COUNTY Williams

TOWNSHIP Madison

SECTION 33

T R

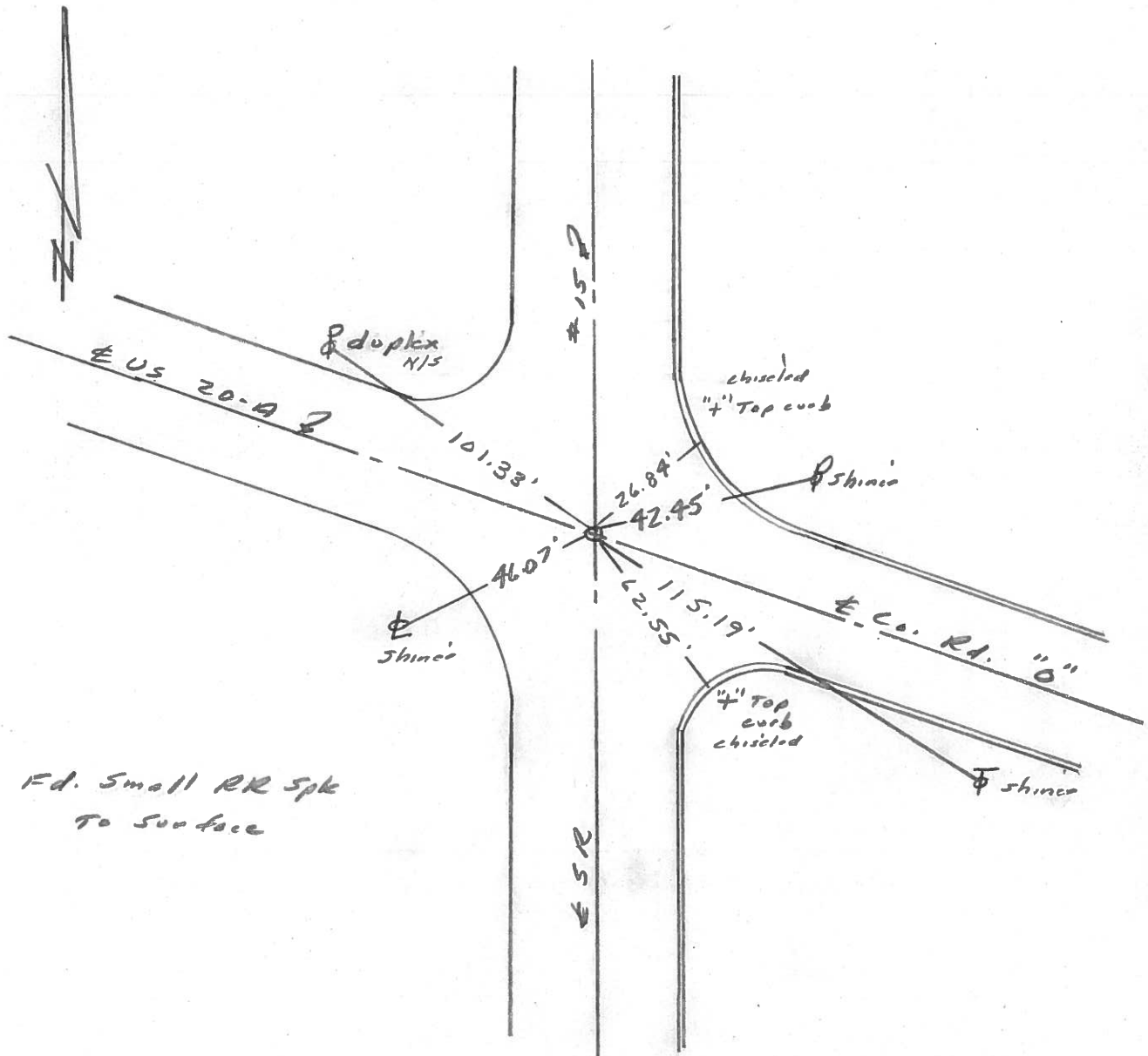
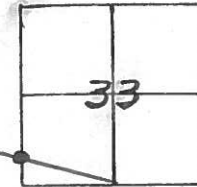
TYPE MONUMENT Small RR Spk.

ON SURFACE - BELOW Surface

LEFT - PAV'T. - RIGHT

 TO EDGE PAVEMENT

S.L.M. SR #15 - 229 + 15.2



County Williams S.R. 15

Date 5-13-82

Township MADISON

Weather CLEAR

Section 33

Temp. +85°

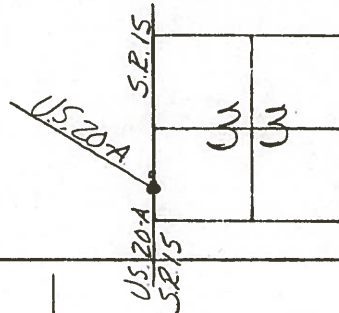
T9 , R2

Personnel HOFFMAN

LOEH RKE

HOUSEHOLDER

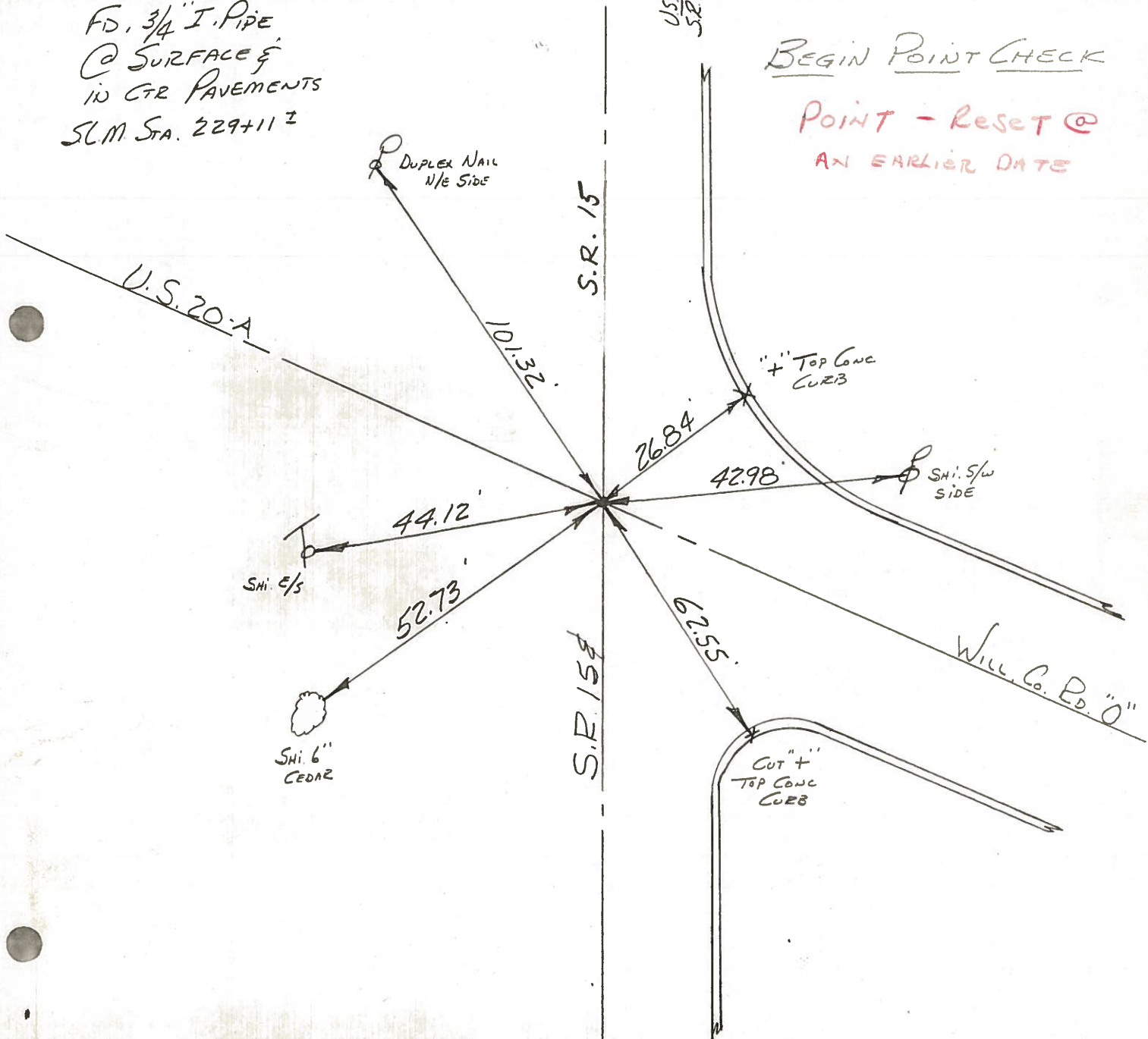
34



FD, 3/4" I. PIPE
@ SURFACE &
IN CTR PAVEMENTS
S.L.M. STA. 229+11.2

BEGIN POINT CHECK

POINT - RESET @
AN EARLIER DATE



County WILLIAMS S.R. 15

Date 11-28-79 5-13-82

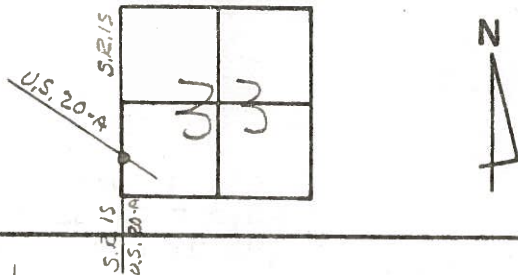
Township MADISON

Weather CLOUDY clear

Section 33

Temp. +32° +85

T9 ~~B~~, R2 ~~V~~
Personnel BURNSIDE
SMITH
MEAD

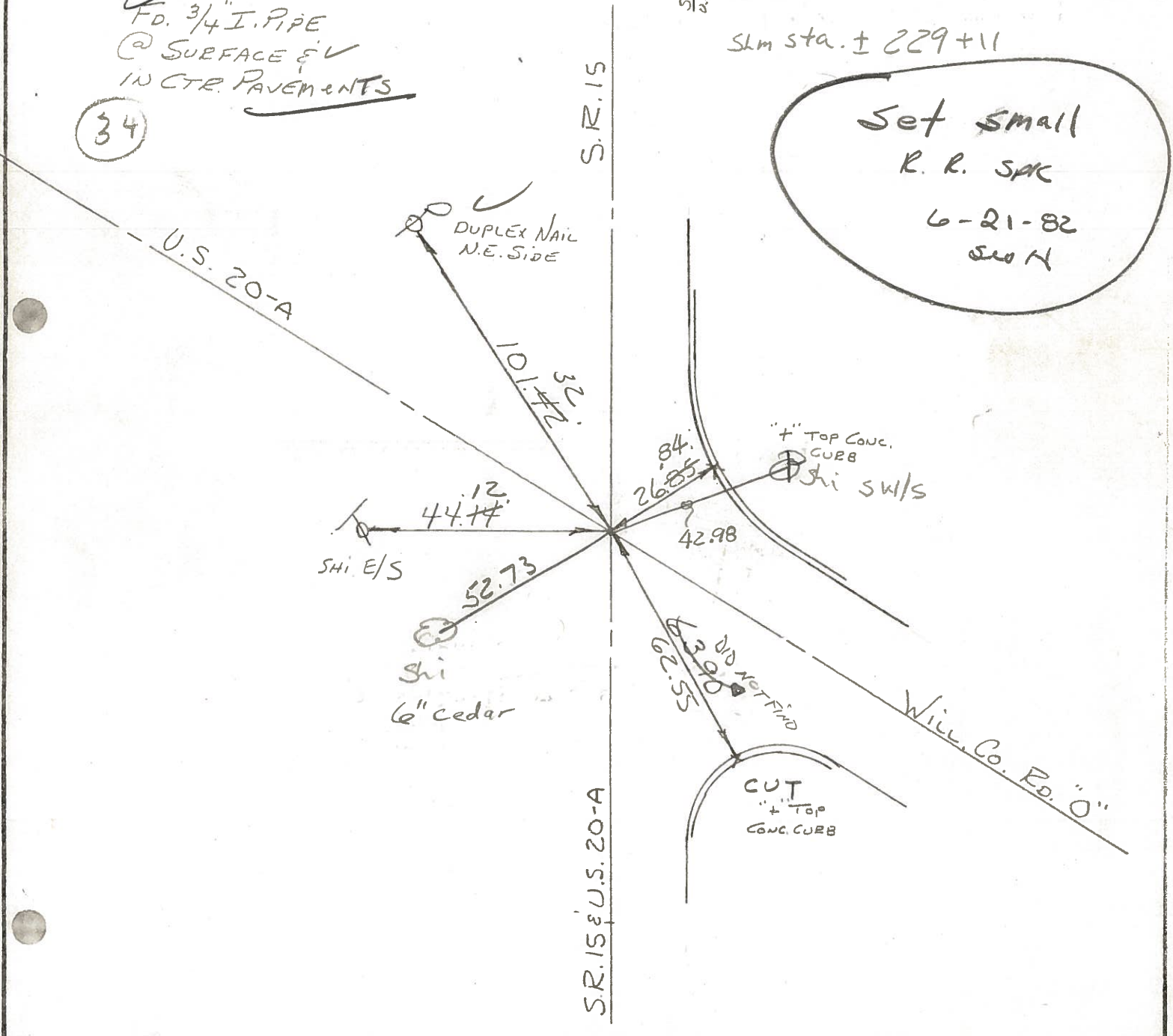


✓ F.D. 3/4" I.P.I.P.E
@ SURFACE & V
IN CTR. PAVEMENTS

(34)

SLM sta. ± 229+11

Set small
R. R. SPK
6-21-82
SMH



County WILLIAMS S.R. 15

Date 11-28-79

Township MADISON

Weather CLOUDY

Section 33

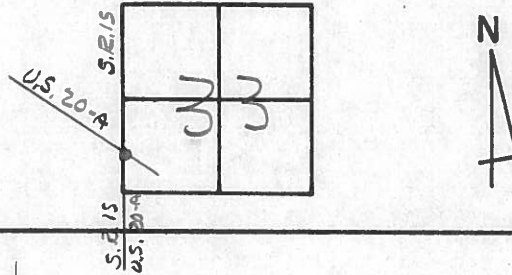
Temp. +32°

T9N, R2E

Personnel BURUSIDE

SMITH

MEAD



Fd. 3/4" I. PIPE
@ SURFACE &
IN CTR. PAVE.

34

S.R. 15

U.S. 20-A

DUPLEX NAIL
N.E. SIDE

101.42'

4" TOP CONC.
CURB

44.14'
SHI.

26.85'

63.90'

Will. Co. Rd. "O"

4" TOP
CONC. CURB

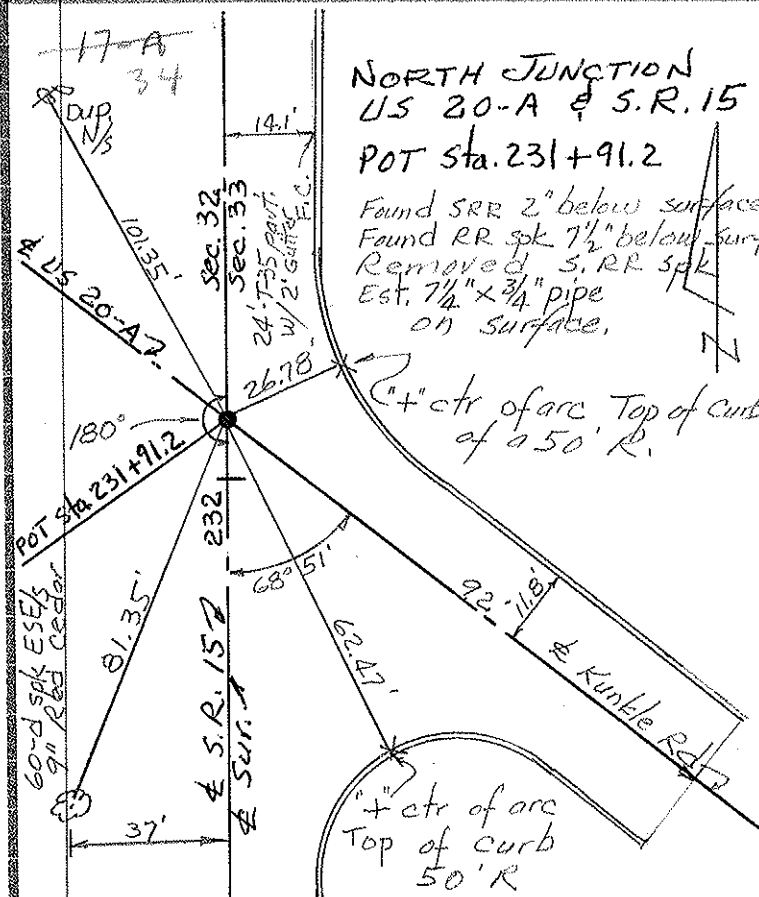
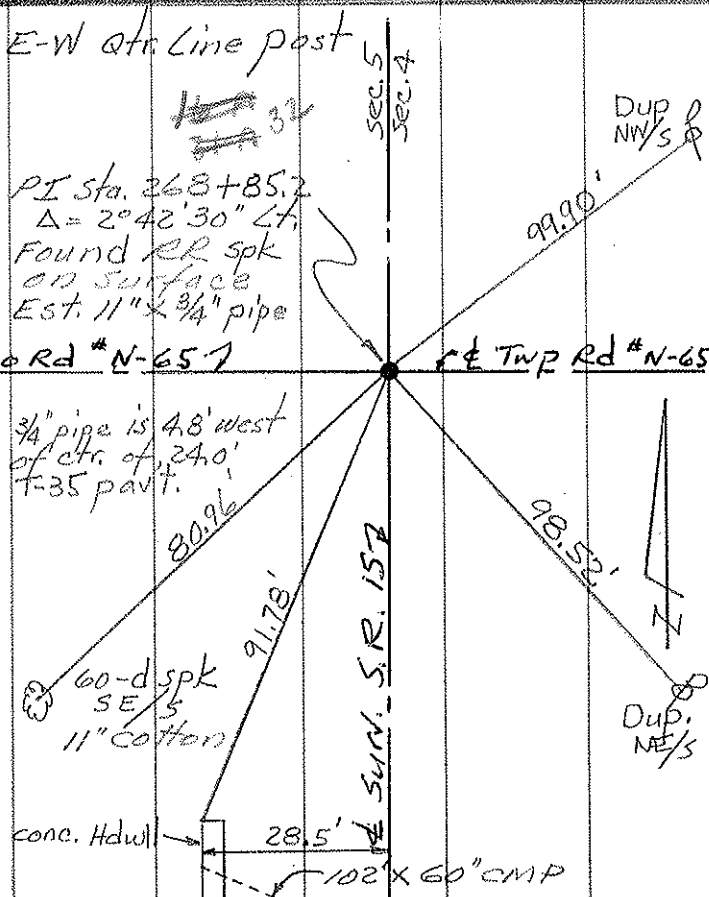
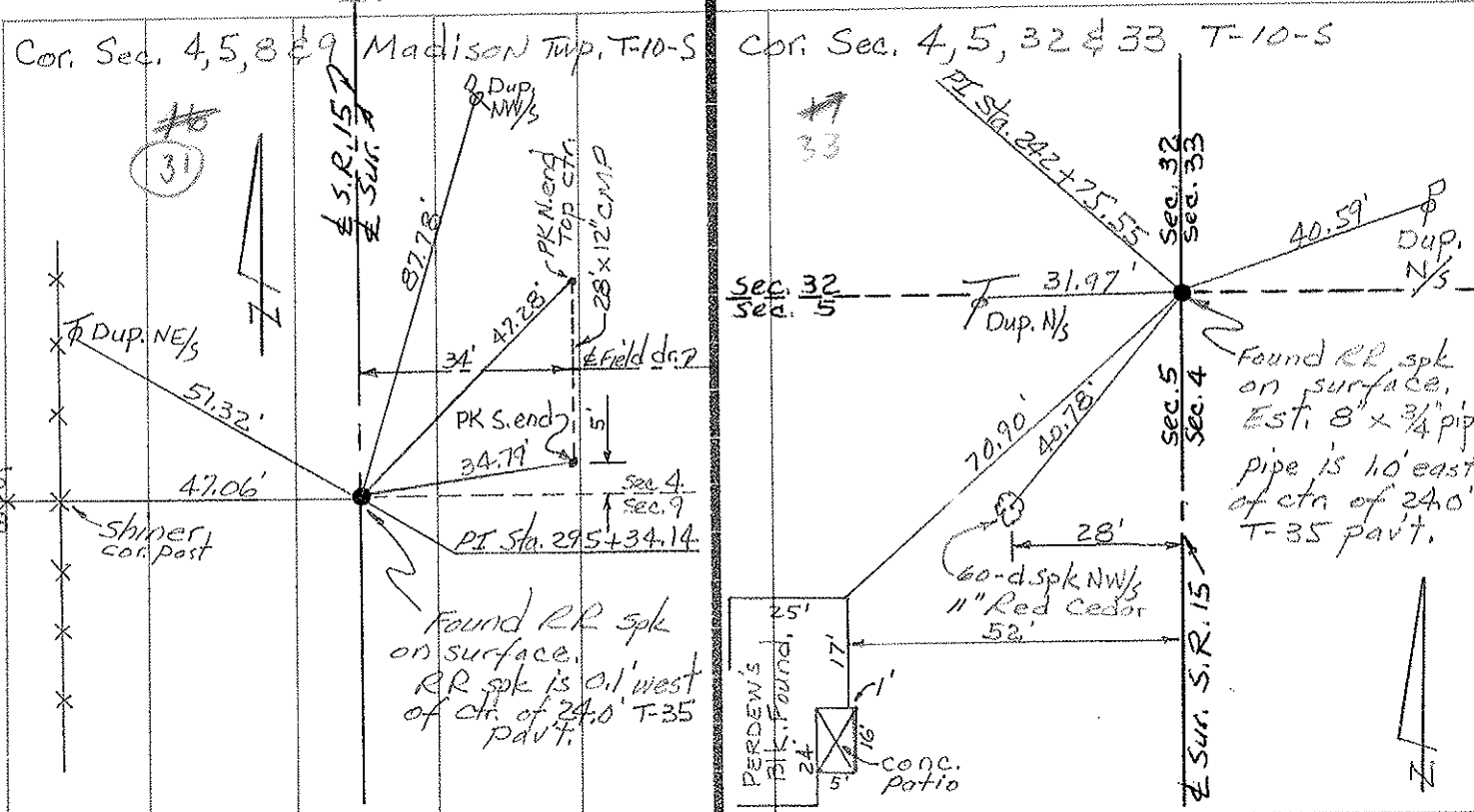
S.R. 15 & U.S. 20-A

PERSONNEL TITLE PERSONNEL TITLE
 Red Beach
 Newcomb
 Knappe

COUNTY Williams DATE 28 Sept. 1972
 S. R. 15 WEATHER _____
 SEC. Madison Twp. TEMP. _____

CONTROL POINTS

DESCRIPTION LEFT CENTER LINE RIGHT JOB NO. _____



PERSONNEL TITLE PERSONNEL TITLE

COUNTY W.I. DATE 7-22-58

S. R. 15 WEATHER Cloudy

From Pt. #20 to Bryan N. Corp. Line TEMP. 75°

DESCRIPTION Re-check of witnesses. JOB NO. _____

