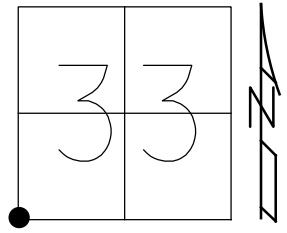


O.D.O.T. DISTRICT 2 SURVEY OFFICE (USE ONLY)

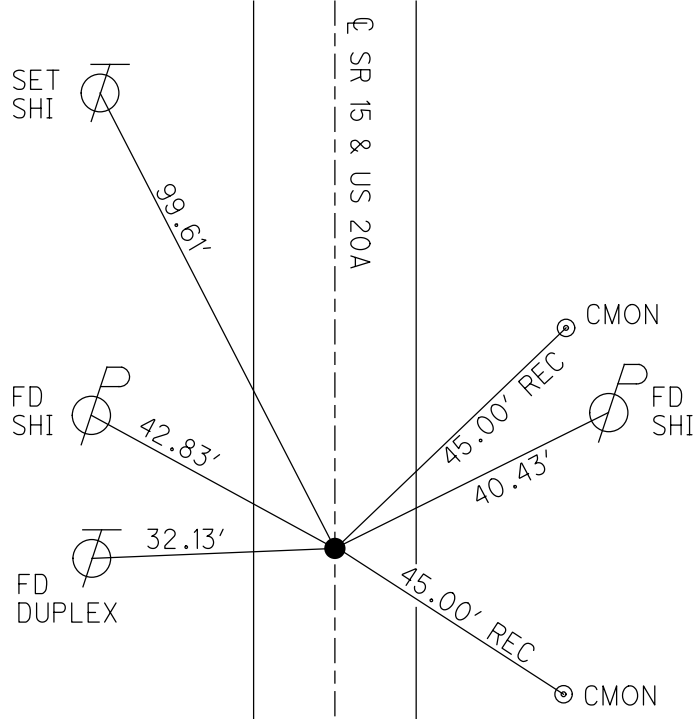
PERSONNEL _____ REFERENCE NO. 33 SHEET 22 OF 40
 NOTES LEU DATE 3/29/16 ROUTE SR 15
 H.C. HOMAN WEATHER SUNNY COUNTY WILLIAMS
 R.C. LEU TEMP. 32° TOWNSHIP MADISON
 DWG BY RHOADES PID 95786 SECTION 33
 T 10 S R 2 W

TYPE MONUMENT SM.R.R.SPIKE
~~ON SURFACE~~ - BELOW 1"
 OFFSET \odot PAVEMENT 1.3' LT : ~~RT~~
11.1' TO RT EDGE PAVEMENT
 STATION: 239+91.68

HORZ.DATUM: NAD83 2011 GEOID: NAVD88 2012B
 GRID: NORTHING: 724264.080 EASTING: 1407203.615



RECORD:
 FD SM.R.R.SPIKE
 7/6/92, CL
 FD P.K.NAIL
 REF33
 10/23/13, TMR
 SET MAG/WASHER
 NEWREF33
 8/24/16, JFO
 FD MAG/WASHER
 REF33
 3/24/20, JLL

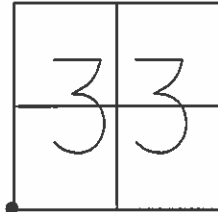


NOTE: REF 4B US 20A

O.D.O.T. DISTRICT 2 SURVEY OFFICE (USE ONLY)

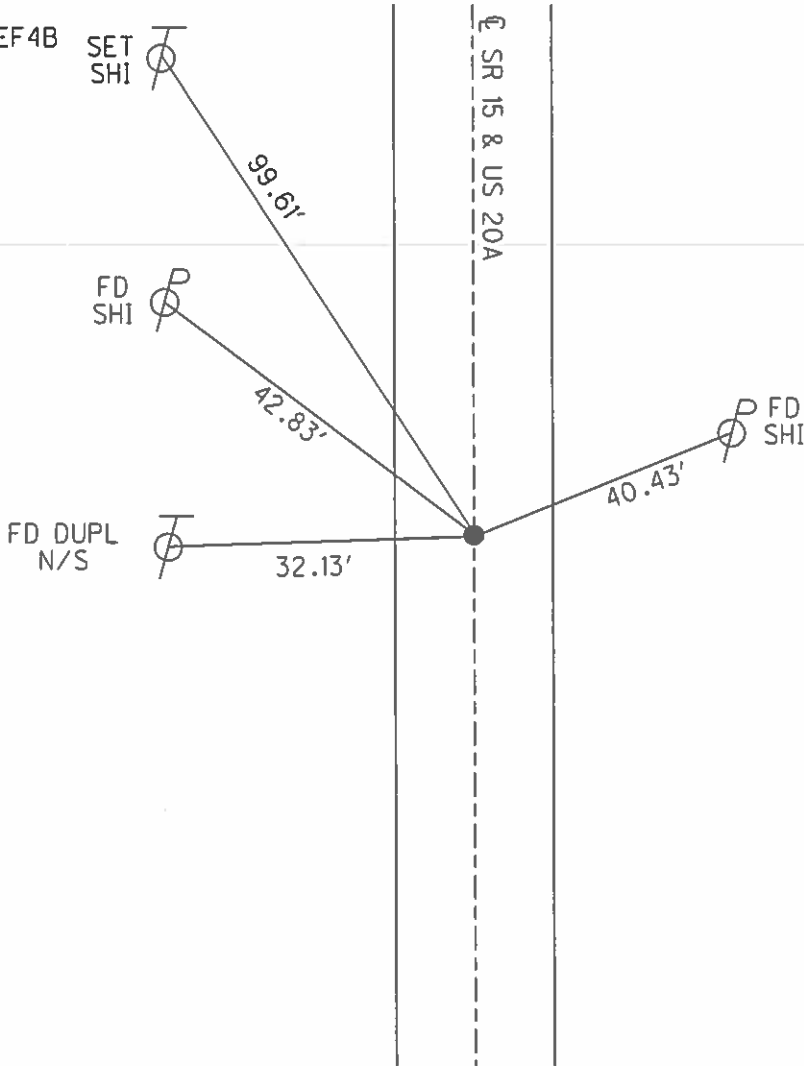
PERSONNEL _____ REFERENCE NO. 33 SHEET 2 OF 40
 NOTES LEU _____ DATE 3/29/16 ROUTE SR 15
 H.C. HOMAN WEATHER SUNNY COUNTY WILLIAMS
 R.C. LEU TEMP. 32° TOWNSHIP MADISON
 _____ SECTION 33
 _____ T 10 S R 2 W

TYPE MONUMENT SM.R.R.SPIKE
~~ON SURFACE~~ - BELOW 1"
 LEFT - Q PAV'T - ~~RIGHT~~ 1.3'
11.1' TO RT EDGE PAVEMENT
 S.L.M. 433+76.9



GRID: NORTHING: 724264.080 EASTING: 1407203.615

NOTE:
 US 20A REF4B

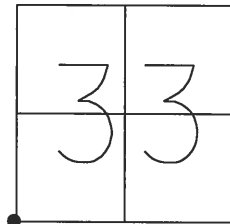


RECORD:
 FD SM.R.R.SPIKE
 7/6/92
 SET P.K./WASHER
 9/22/92, CL
 FD P.K.NAIL
 10/18/13
 REF33
 10/23/13, TMR
 SET MAG/WASHER
 NEWREF33
 8/24/16, JFO

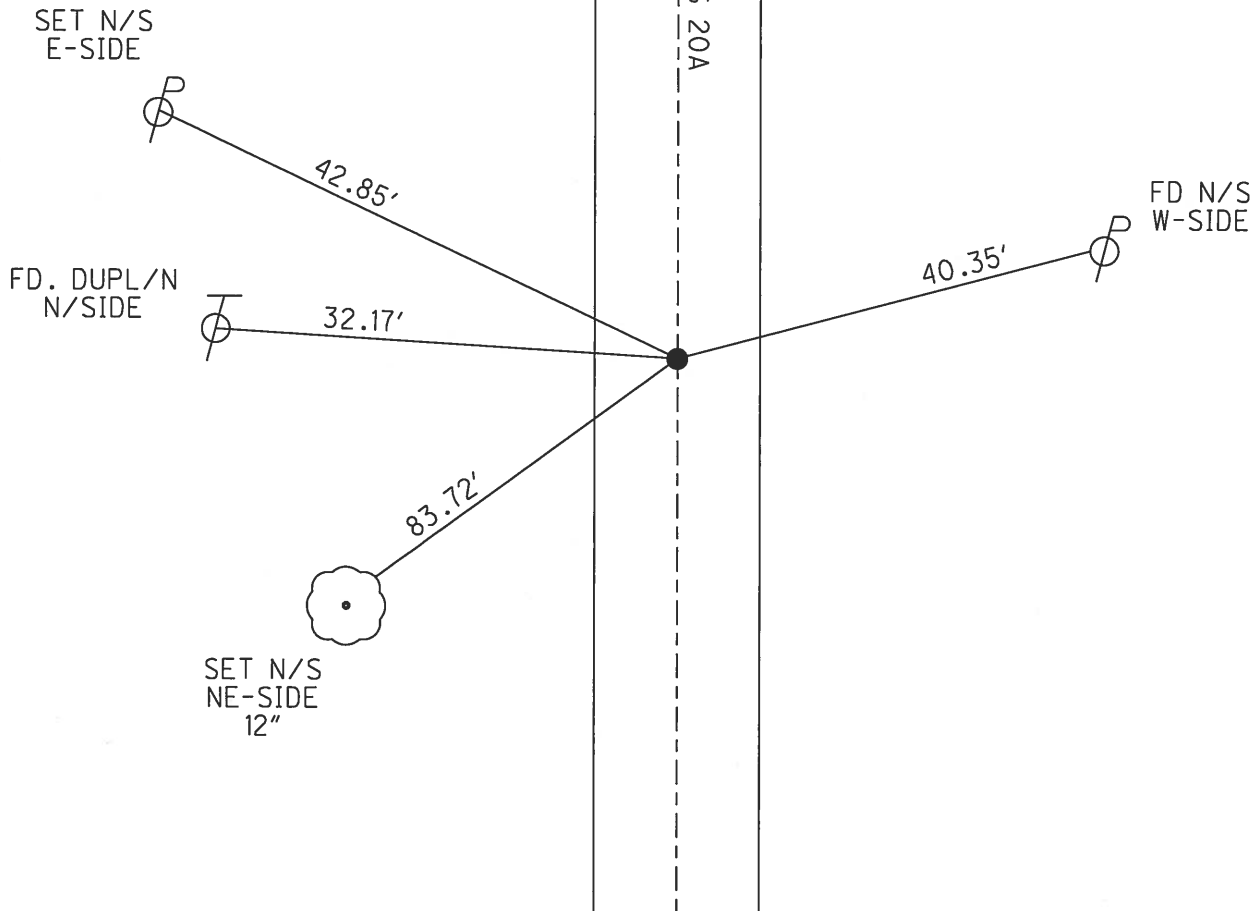
O.D.O.T. DISTRICT 2 SURVEY OFFICE (USE ONLY)

PERSONNEL _____ REFERENCE NO. 33 SHEET 21 OF 39
 NOTES NUHFER DATE 7/26/07 ROUTE SR 15
 H.C. HUSS WEATHER MILD COUNTY WILLIAMS
 R.C. VIETH TEMP. 70° TOWNSHIP MADISON
 _____ SECTION 33
 _____ T 10 S R 2 W

TYPE MONUMENT P.K.NAIL
 ON SURFACE - ~~BELOW~~ ON
 LEFT - ☉ PAV'T - ~~RIGHT~~ 1.5' EAST
15.4' TO RT EDGE PAVEMENT
 S.L.M. 242+75.23
 GRID: NORTHING: - EASTING: -



RECORD:
 FD SM.R.R.SPIKE
 7/6/92
 SET P.K./WASHER
 9/22/92, CL



O.D.O.T. DISTRICT 2 SURVEY OFFICE

PERSONNEL _____

REFERENCE NO. 33

SHEET 2 OF 16

NOTES LOEHRKE

H.C. _____

DATE 7-6-92

ROUTE SR 15
U.S. 20-A

R.C. _____

WEATHER MILD

COUNTY Williams

TEMP. 70° ±

TOWNSHIP MADISON

SECTION 33

T10 S R 2 W

TYPE MONUMENT SM. R.R. SPK.

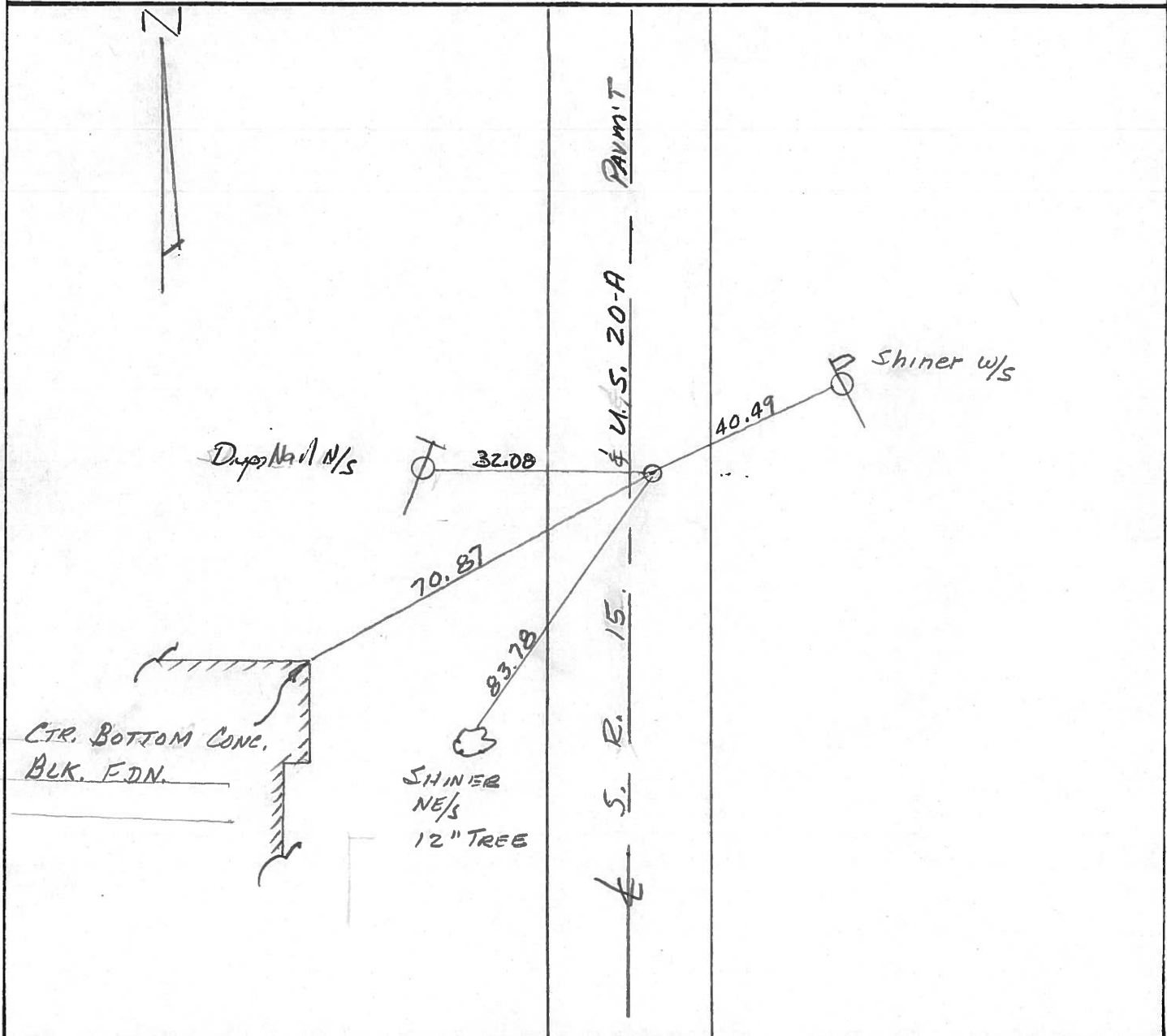
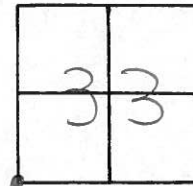
Set P.K./WASHER
9-22-92

ON SURFACE - ~~BELOW~~ ON SURFACE

LEFT - ~~PAV'T.~~ - RIGHT 1.3' LT.

11.1' TO RT. EDGE PAVEMENT

S.L.M. 71+45



County Williams S.R. US20-A & SR15

Date 9-7-82

Township MADISON

Weather L.T. RAIN

Section 4

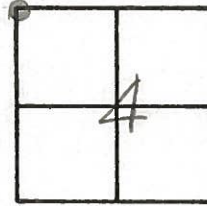
Temp. +55°

T10^SN, R2^WE

Personnel HOFFMAN

+

CREW



#33

Fd 3/4" pipe @ surface

S.L.M. 71+10

1' EAST of & PAUT

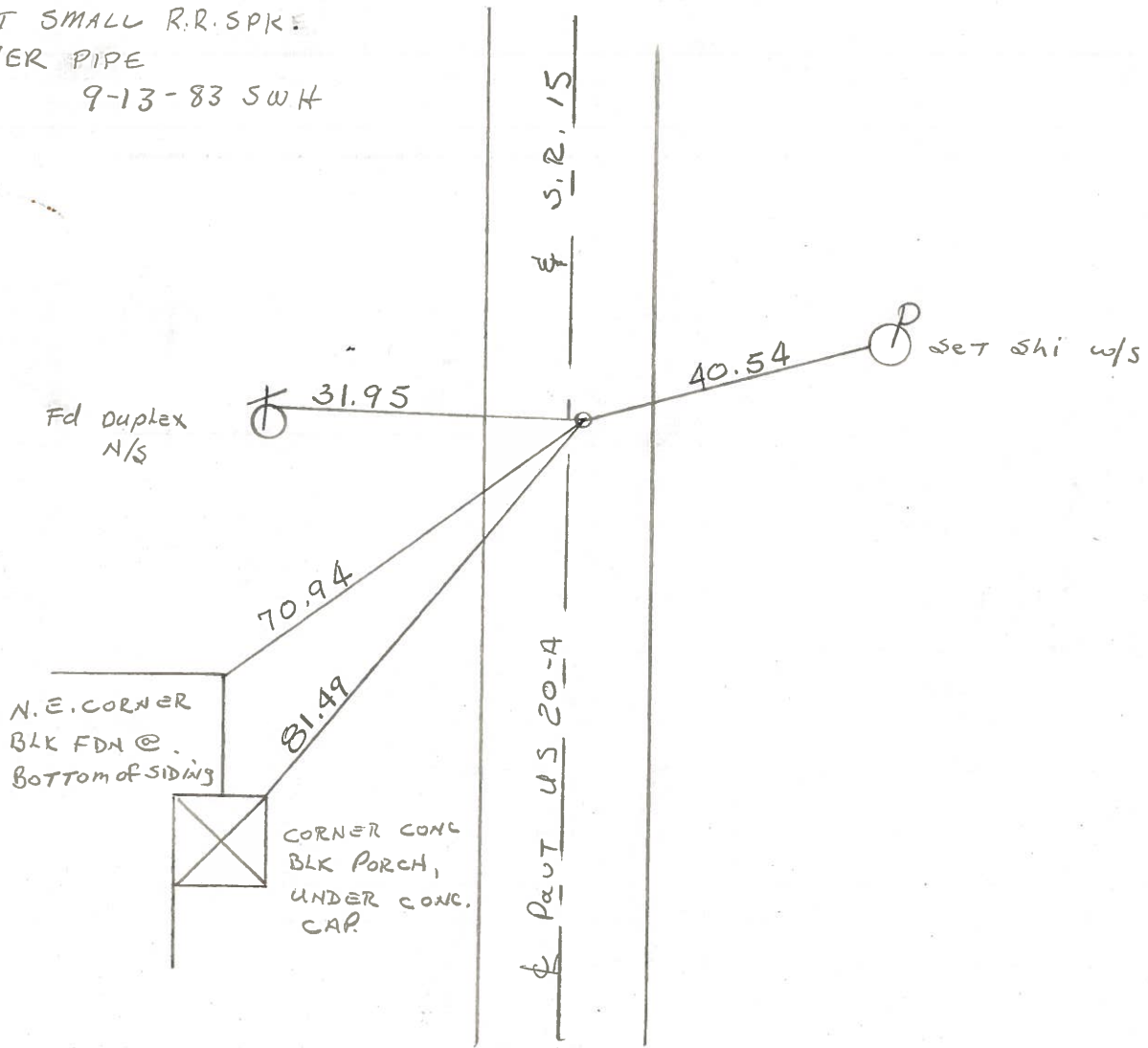
11.0' TO E. EP.

13.0' TO W. EP.

SET SMALL R.R. SPK.

OVER PIPE

9-13-83 SWH



County WILLIAMS S.R. 15

Date 11-27-79 9-7-82

Township MADISON

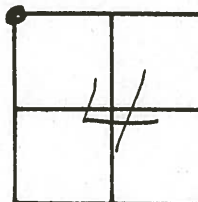
Weather CLOUDY Lt. Rain

Section 4

Temp. +42° +55°

T10.8, R2.1V

Personnel	<u>BURNSIDE</u>	Hoffman
	<u>SMITH</u>	Householder
	<u>MEAD</u>	Loehrke
		BARNHISEL

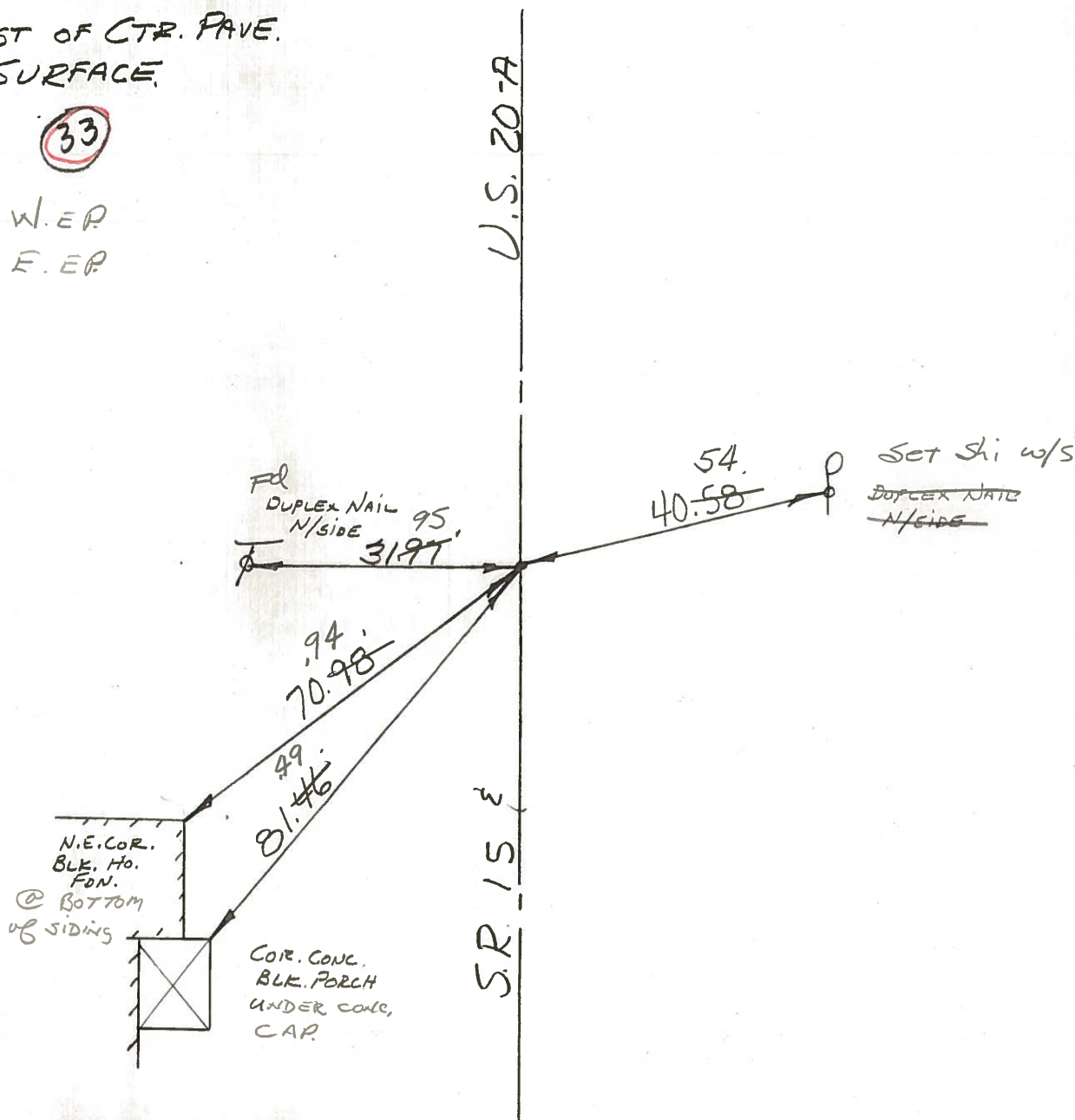


FD. 3/4" IRON PIPE
 ✓ 1" EAST OF CTR. PAVE.
 E @ SURFACE

✓ 1-18-83

(33)

13.0 TO W.E.P
 11.0 TO E.E.P



County WILLIAMS S.R. 15

Date 11-27-79

Township MADISON

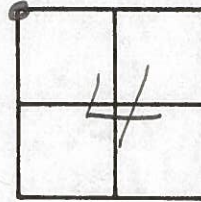
Weather CLOUDY

Section 4

Temp. +42°

T108, R2EV

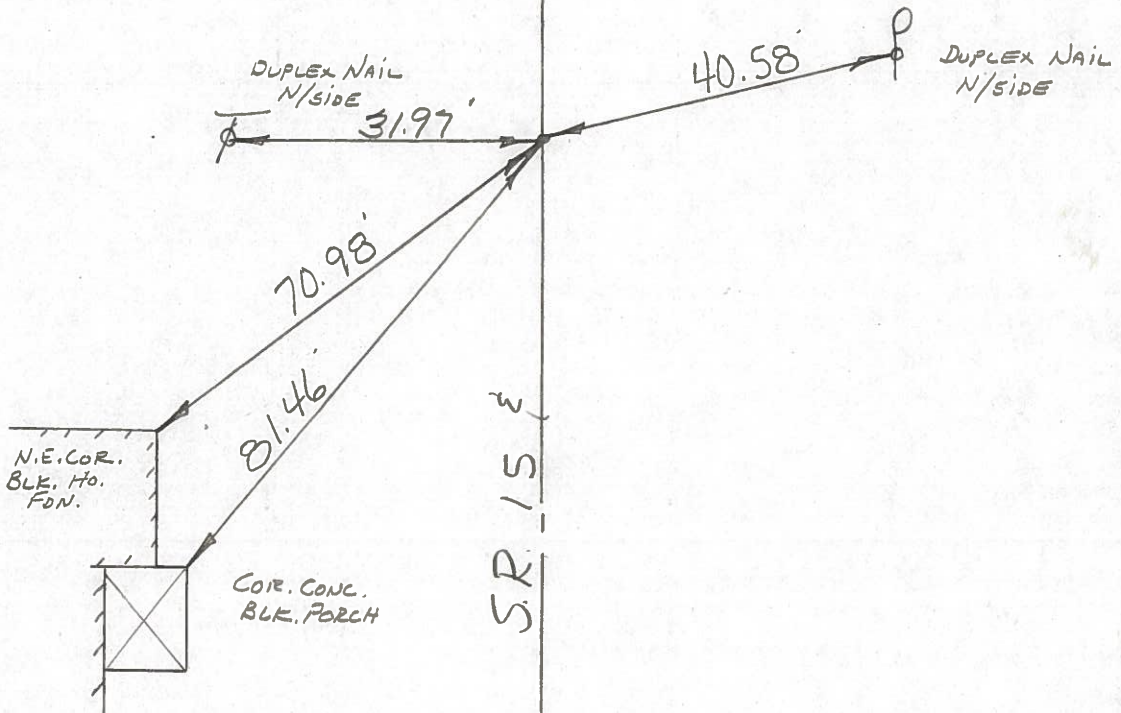
Personnel BURNSIDE
SMITH
MEAD



FD. 3/4" IRON PIPE
1' ± EAST OF CTR. PAVE.
E @ SURFACE.

33

U.S. 20-A

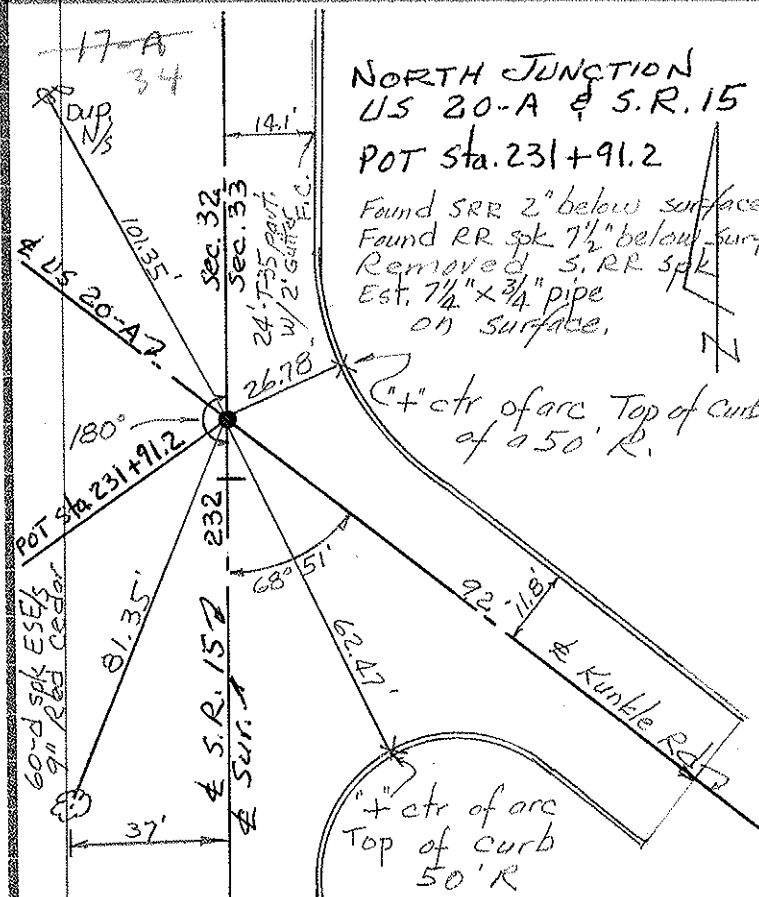
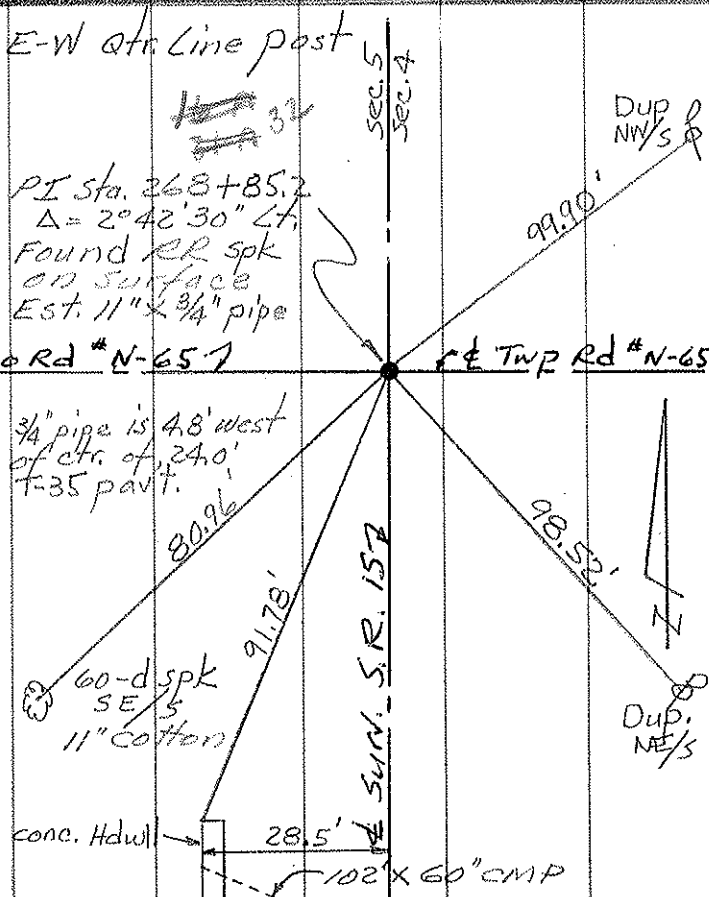
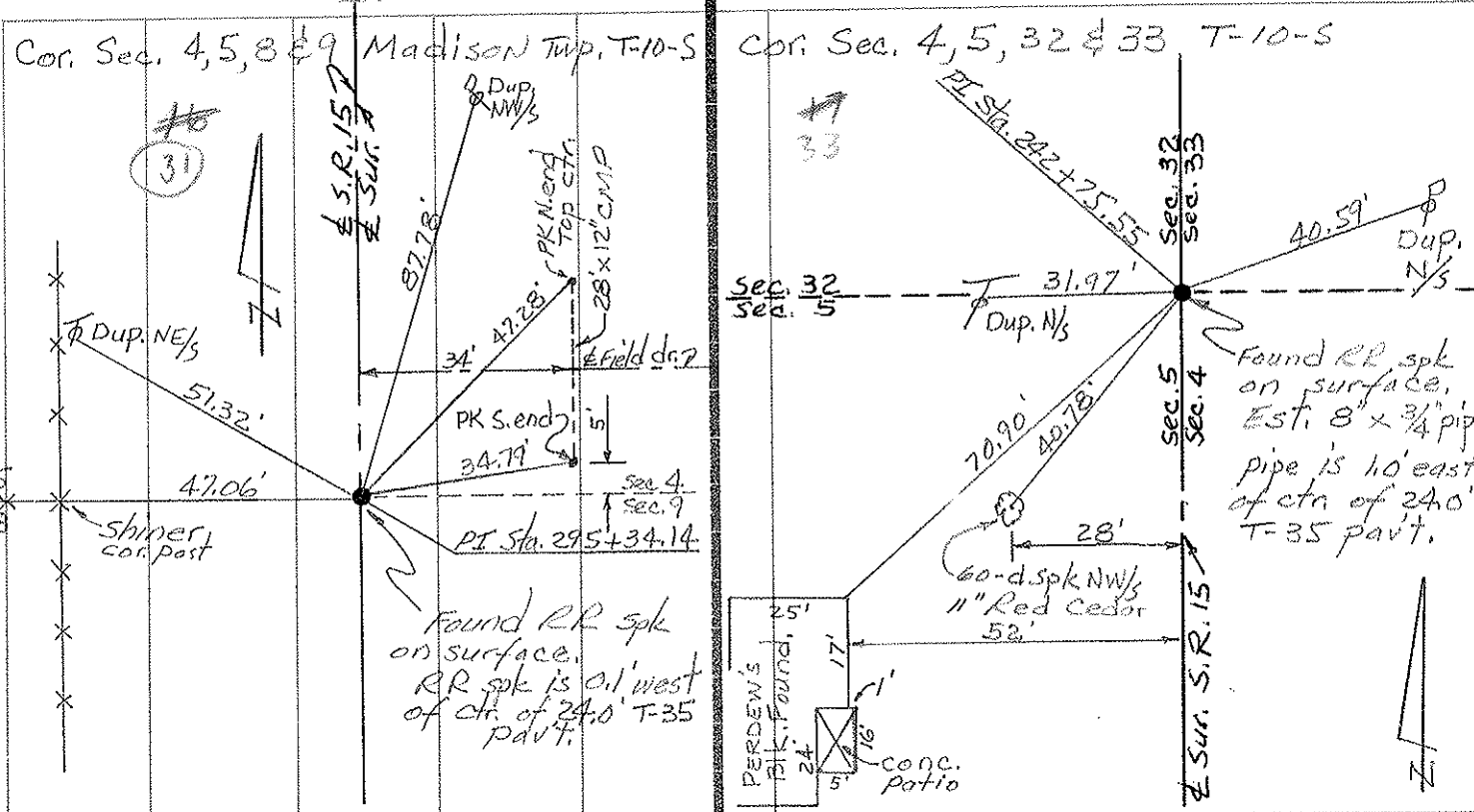


PERSONNEL TITLE PERSONNEL TITLE
 Red Beach
 Newcomb
 Knappe

COUNTY Williams DATE 28 Sept. 1972
 S. R. 15 WEATHER _____
 SEC. Madison Twp. TEMP. _____

CONTROL POINTS

DESCRIPTION LEFT CENTER LINE RIGHT JOB NO. _____



PERSONNEL TITLE PERSONNEL TITLE

COUNTY W.I. DATE 7-22-58

Louys
Perséfall
Wise
Krohn

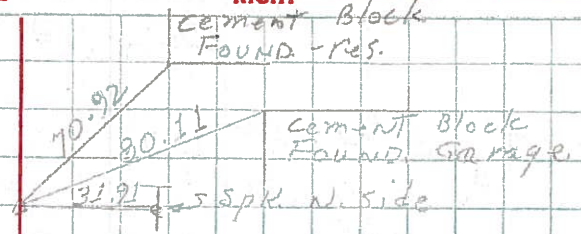
S. R. 15 WEATHER Cloudy

From Rt. #20 TO
SEC. Bryan N. Corp. Line TEMP. 75°

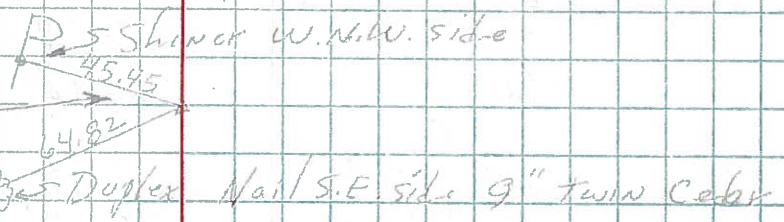
225. DESCRIPTION Re-check of witnesses.

LEFT CENTER LINE RIGHT JOB NO.

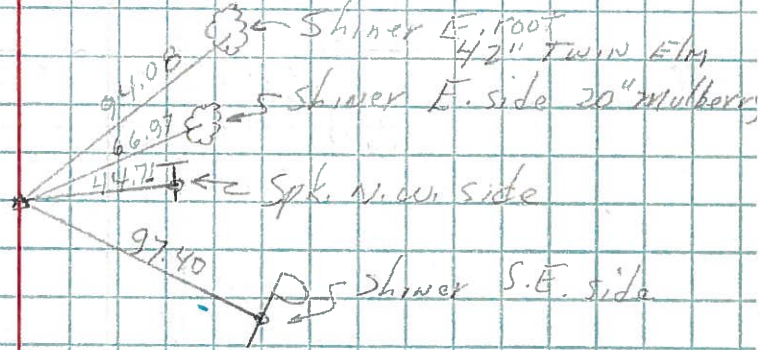
P.I. - sta - 242 + 75.55
 $\Delta = 1^\circ - 18' RT$
R.R. Spk. W. Pav't **(33)**



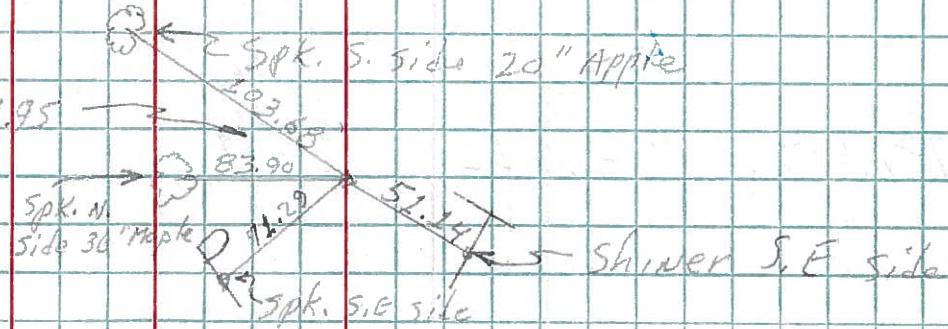
224. ADD
P.C. - sta. 240 + 80.55
Shower in Pav't



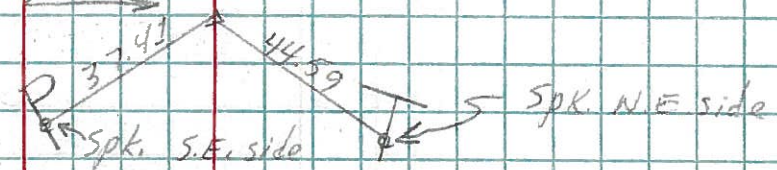
223. **(34)**
P.I. - sta 231 + 91.2
Small R.R. spk.



222. **(15)**
P.I. - sta. 216 + 21.95
 $\Delta = 0^\circ - 14' LT.$
Small R.R. spk.



221. ADD
P.T. - sta. 190 + 94.92



220. **(14)**
P.I. - sta. 189 + 66.92
 $\Delta = 0^\circ - 51' RT.$

