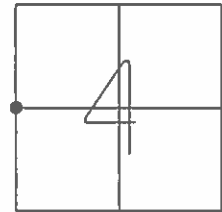


O.D.O.T. DISTRICT 2 SURVEY OFFICE (USE ONLY)

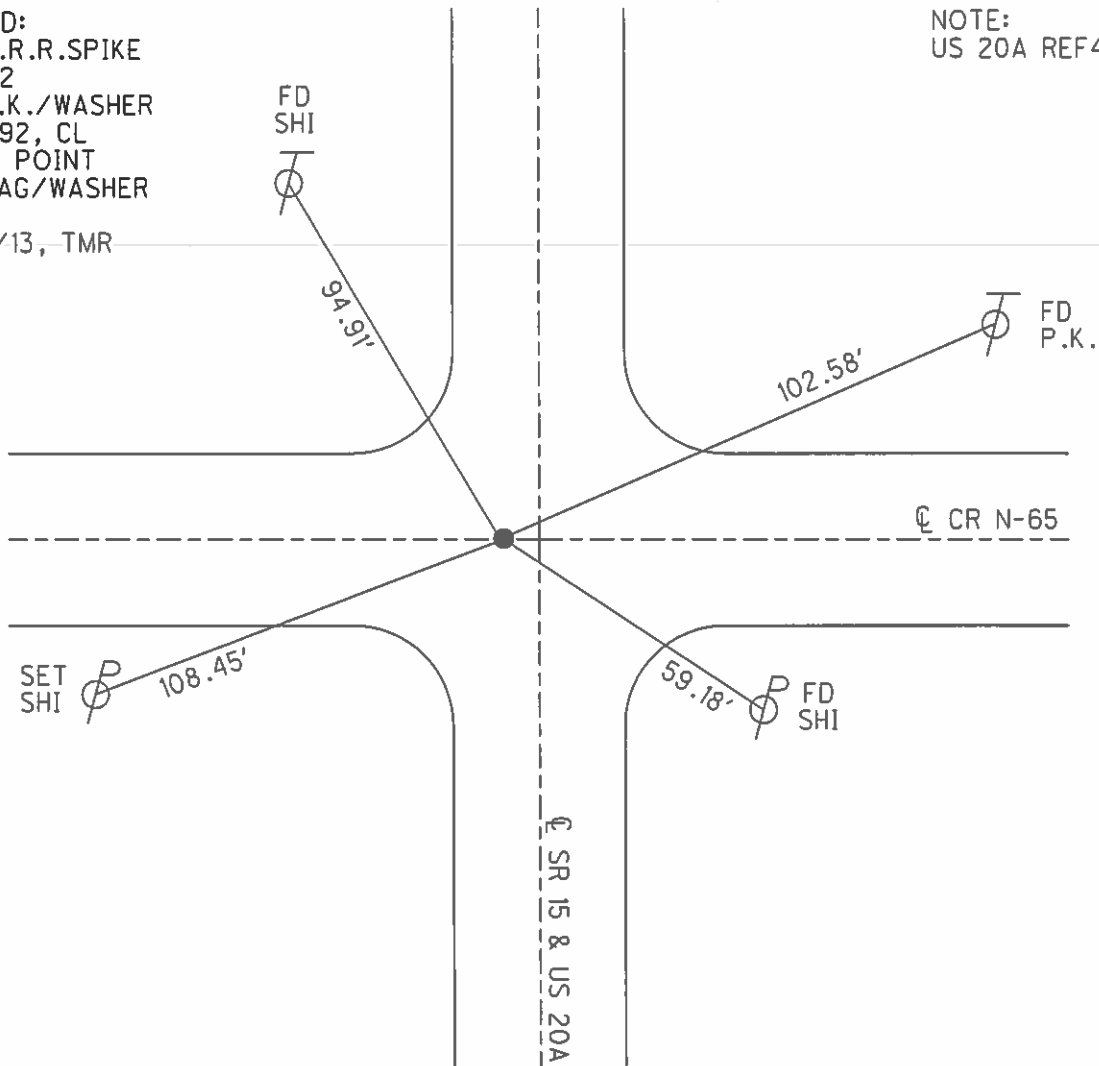
PERSONNEL _____ REFERENCE NO. 32 SHEET 3 OF 40
 NOTES RHOADES DATE 8/24/16 ROUTE SR 15
 H.C. O'DONNELL WEATHER CLOUDY COUNTY WILLIAMS
 R.C. TODD TEMP. 72° TOWNSHIP MADISON
 SECTION 4
 T 10 S R 2 W

TYPE MONUMENT MAG/WASHER
 ON SURFACE - ~~BELOW~~ ON
~~LEFT~~ - CL PAV'T - RIGHT 5.2'
- TO - EDGE PAVEMENT
 S.L.M. 459+85.89
 GRID: NORTHING: 721658.599 EASTING: 1407069.135



RECORD:
 FD SM.R.R.SPIKE
 7/6/92
 SET P.K./WASHER
 9/22/92, CL
 D.N.F. POINT
 SET MAG/WASHER
 REF32
 10/23/13, TMR

NOTE:
 US 20A REF4C

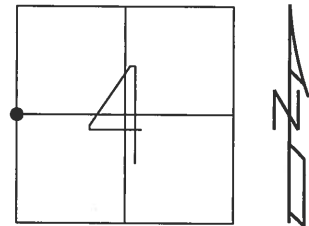


O.D.O.T. DISTRICT 2 SURVEY OFFICE (USE ONLY)

PERSONNEL	REFERENCE NO.	32	SHEET	22	OF	39
NOTES	DATE	7/26/07	ROUTE	SR 15		
H.C.	WEATHER	MILD	COUNTY	WILLIAMS		
R.C.	TEMP.	70°	TOWNSHIP	MADISON		
			SECTION	4		
			T	10	S	R 2 W

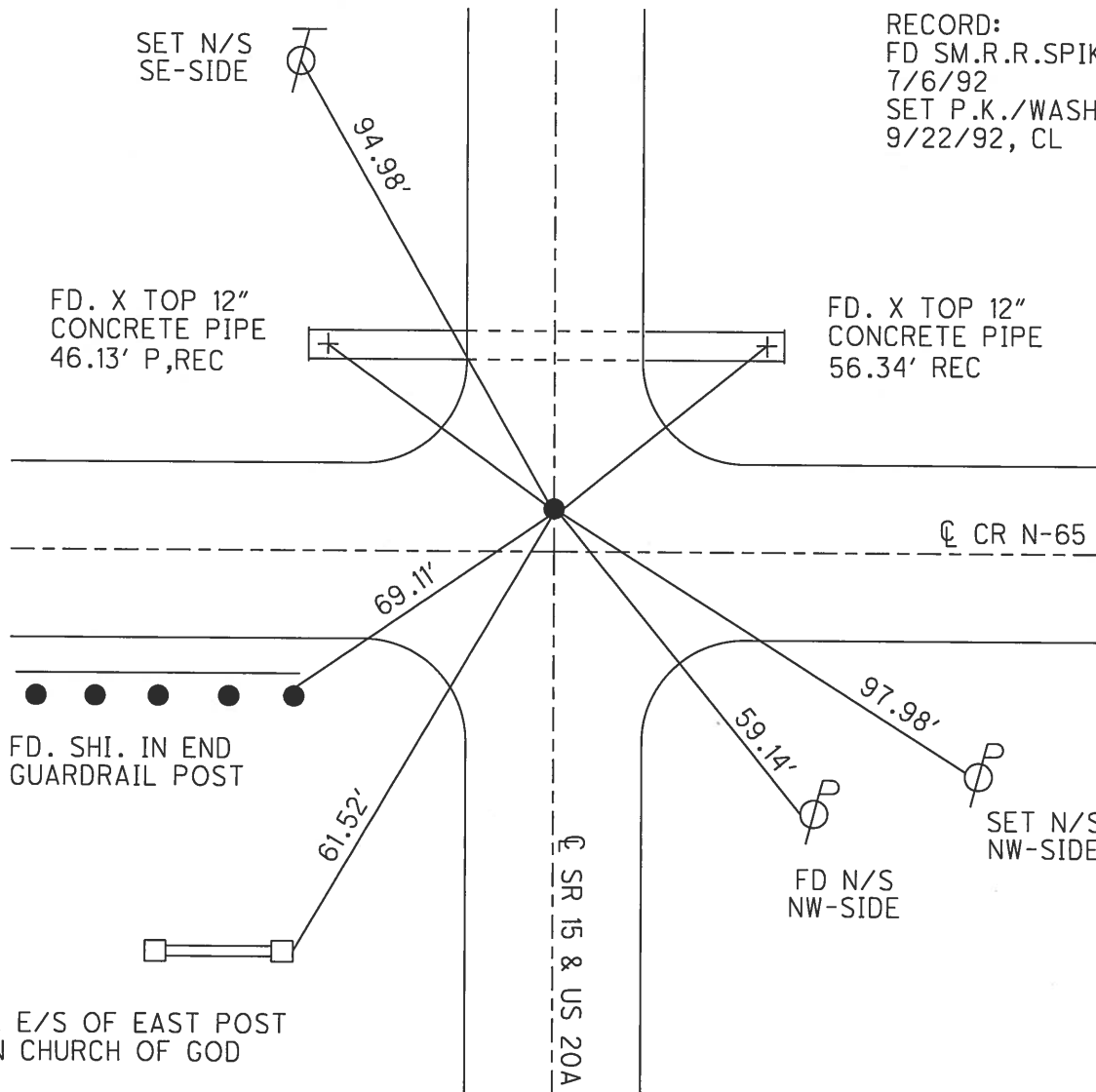
TYPE MONUMENT SM.R.R.SPIKE
~~ON SURFACE~~ - BELOW 0.2'
~~LEFT~~ - CL PAV'T - RIGHT 4.8' WEST
- TO - EDGE PAVEMENT
 S.L.M. 268+84.58

SV1



GRID: NORTHING: 721658.294 EASTING: 1407068.820

RECORD:
 FD SM.R.R.SPIKE
 7/6/92
 SET P.K./WASHER
 9/22/92, CL



FD. SHI. E/S OF EAST POST
 MADISON CHURCH OF GOD

O.D.O.T. DISTRICT 2 SURVEY OFFICE

PERSONNEL

REFERENCE NO. 32

SHEET 3 OF 16

NOTES LOGHRKE

H.C. CURTIS

R.C. ROMERO

DATE 7-6-92

WEATHER MILD

TEMP. 70°

SR 15

ROUTE U.S. 20-A

COUNTY Williams

TOWNSHIP MADISON

SECTION 4

T. 10 S R 2 W

TYPE MONUMENT S.M. R. I. Z. SPK.

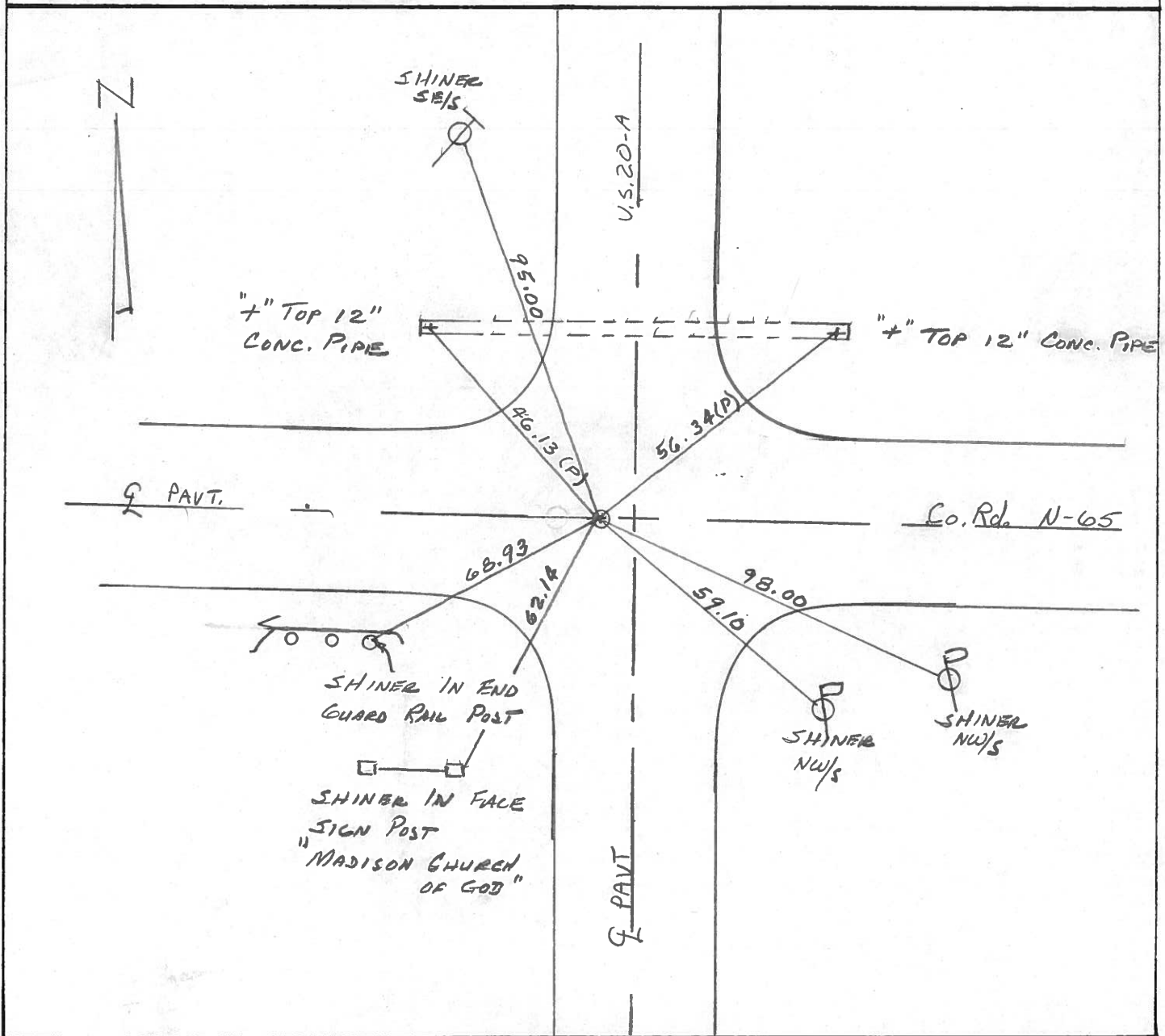
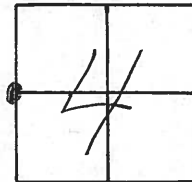
ON SURFACE - BELOW YES

LEFT - ~~E~~ PAV'T. - RIGHT 5.2'

TO EDGE PAVEMENT

S.L.M. 97+60

Set. P.K. / WASHER
9-22-92



County Williams S.R. 4520-A S. R. 15

Date 9-7-82

Township MADISON

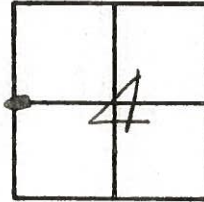
Weather LT. Rain

Section 4

Temp. +55°

T10N, R2E

Personnel HOFFMAN



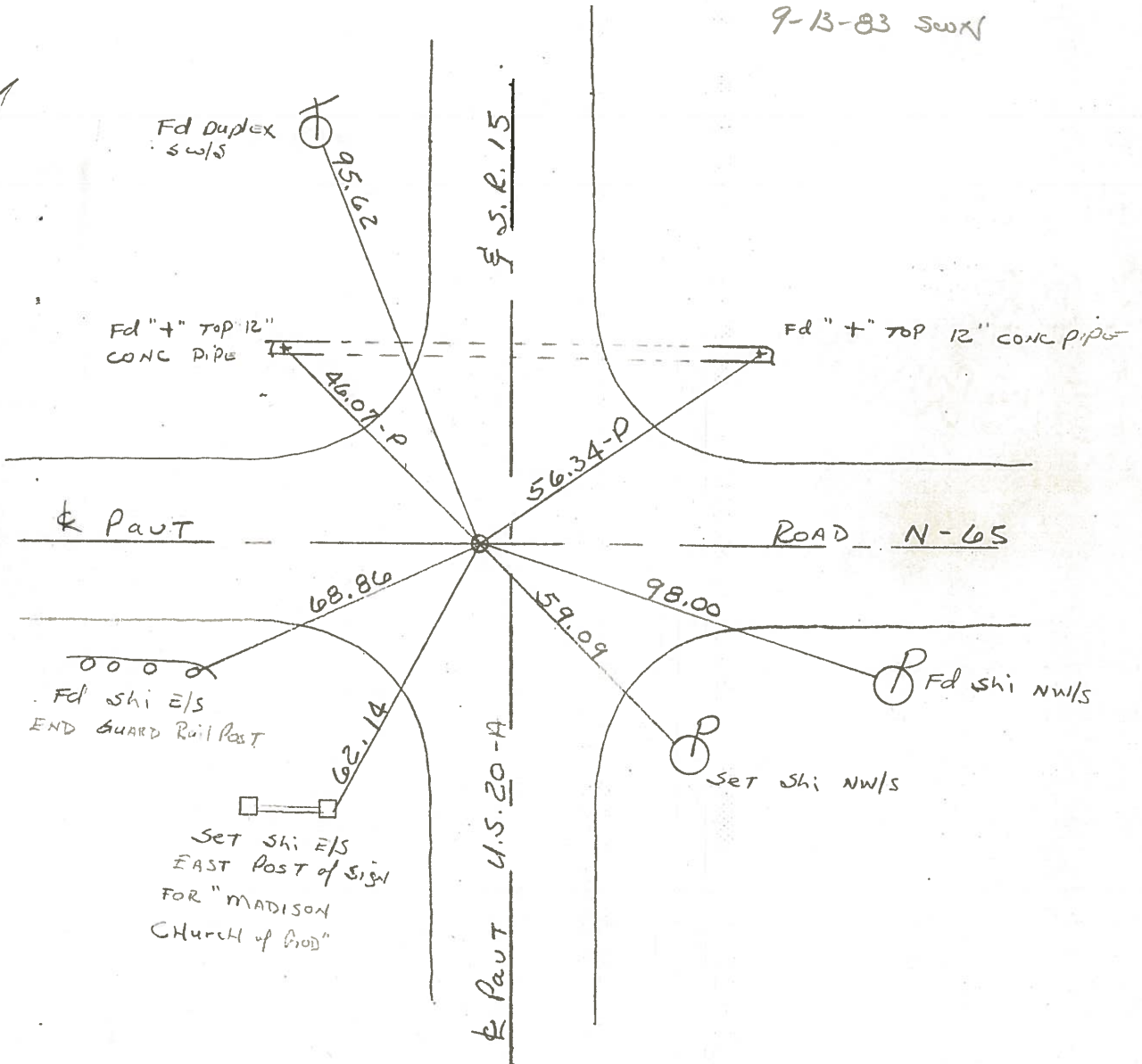
32

CREW

Fd 3/4" pipe @ surface
5.2' West of & PAUT 4520-A
& ON & PAUT Co. Rd N-65 EAST

S.L.M. 97+21

Set SMALL R.P. Spt
9-13-83 SWX



County WILLIAMS S.R. 15

Date 11-27-79 9-7-82

Township MADISON

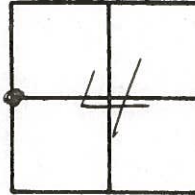
Weather CLOUDY Lt. Rain

Section 4

Temp. +42° +55°

T10.8, R2W

Personnel BURNSIDE Hoffmann
SMITH & crew
MEAD

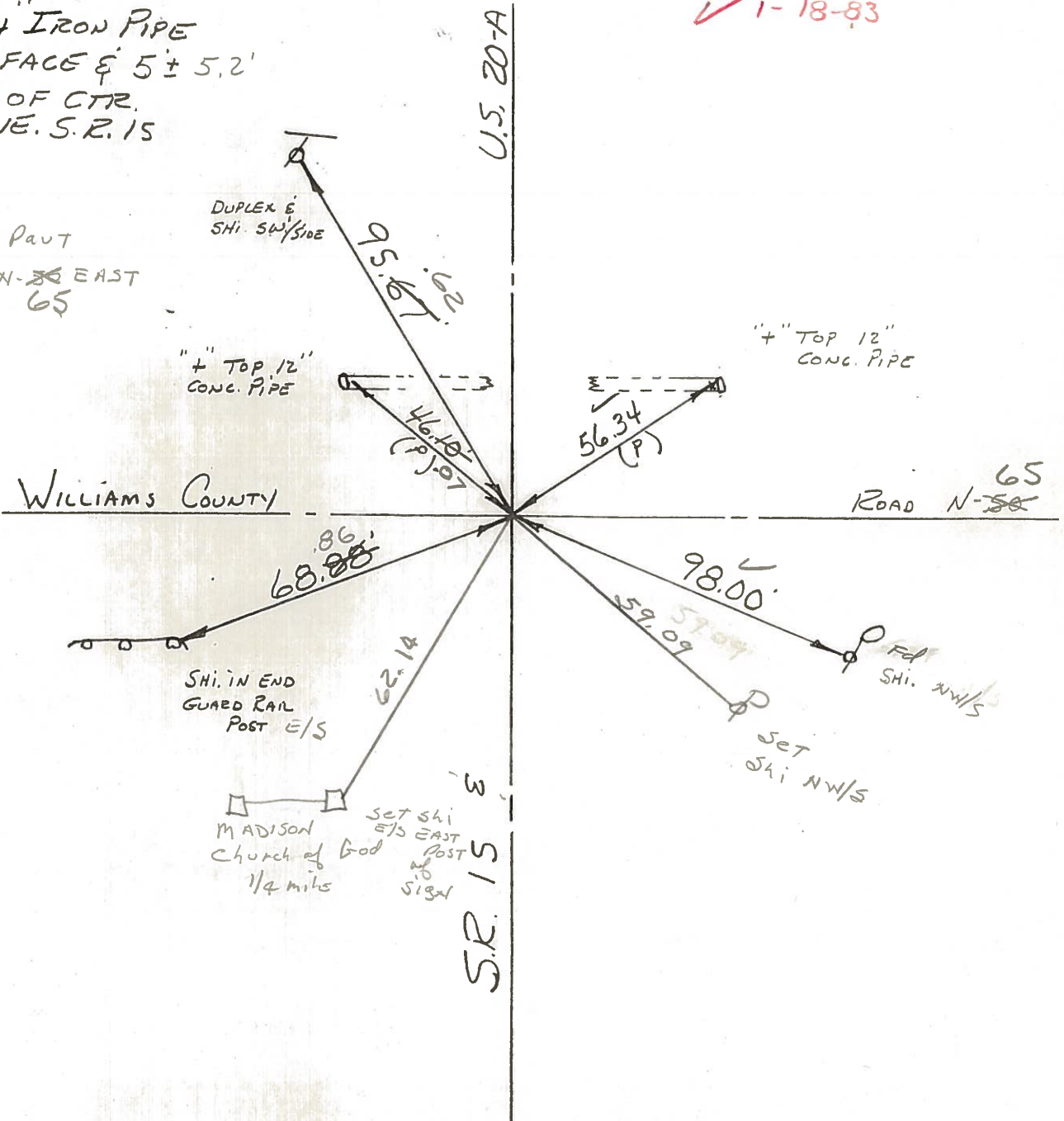


FD. 3/4" IRON PIPE
 @ SURFACE ± 5 ± 5.2'
 WEST OF CTR.
 PAVE. S.R. 15

✓ 1-18-83

(32)

OWN & PAVT
 Rd N-~~58~~ EAST
 65



DUPLEX & SHI. SW/SIDE

4" TOP 12" CONC. PIPE

4" TOP 12" CONC. PIPE

SHI. IN END GUARD RAIL POST E/S

SET SHI E/S EAST POST NO. 10 SIGN
 MADISON Church of God
 1/4 mile

FD SHI. NW/S

SET SHI NW/S

County WILLIAMS S.R. 15

Date 11-27-79

Township MADISON

Weather CLOUDY

Section 4

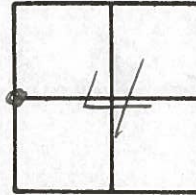
Temp. +42°

T10N, R2E

Personnel BURNSIDE

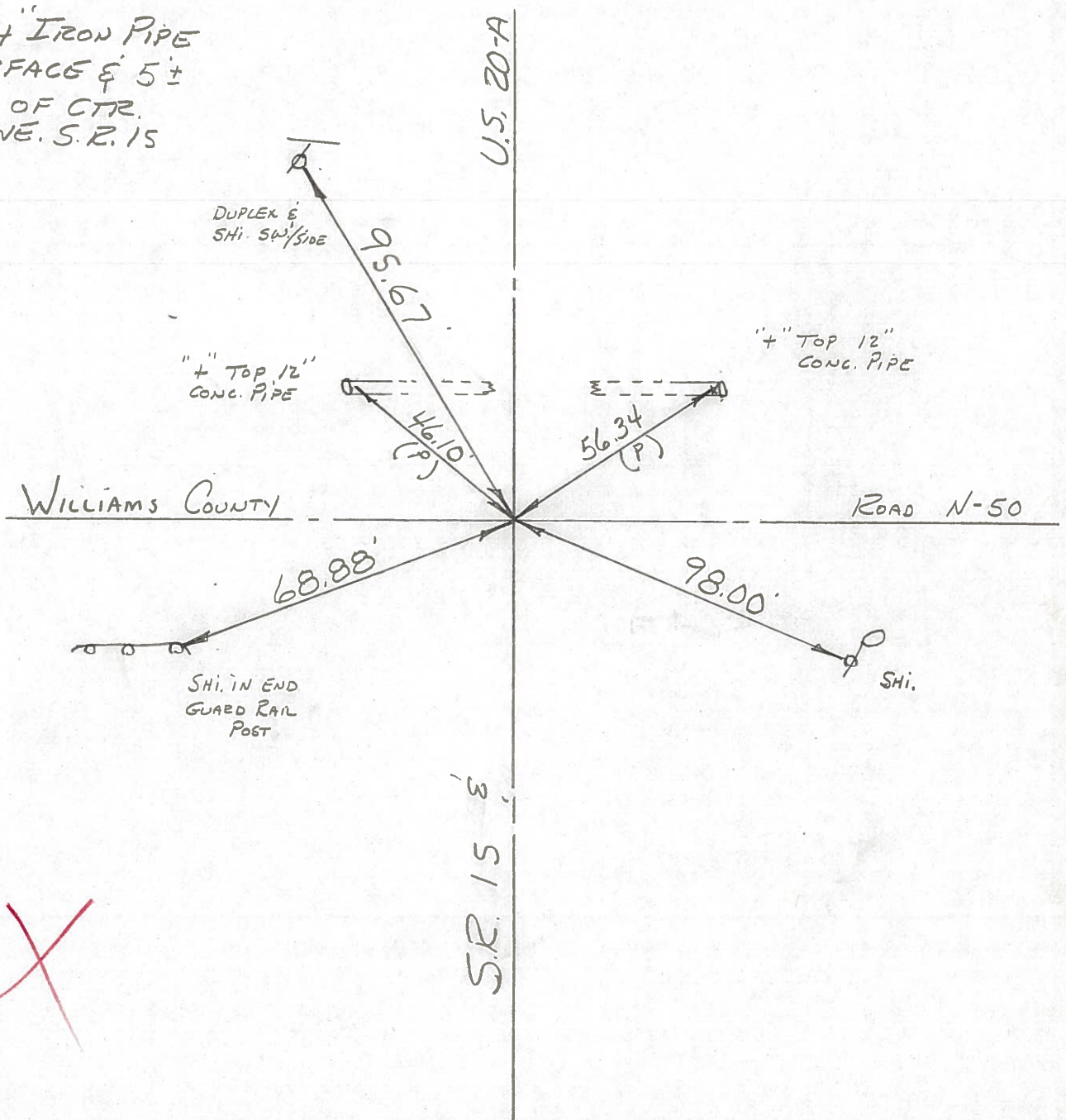
SMITH

MEAD



FD. 3/4" IRON PIPE
@ SURFACE ± 5'
WEST OF CTR.
PAVE. S.R. 15

32

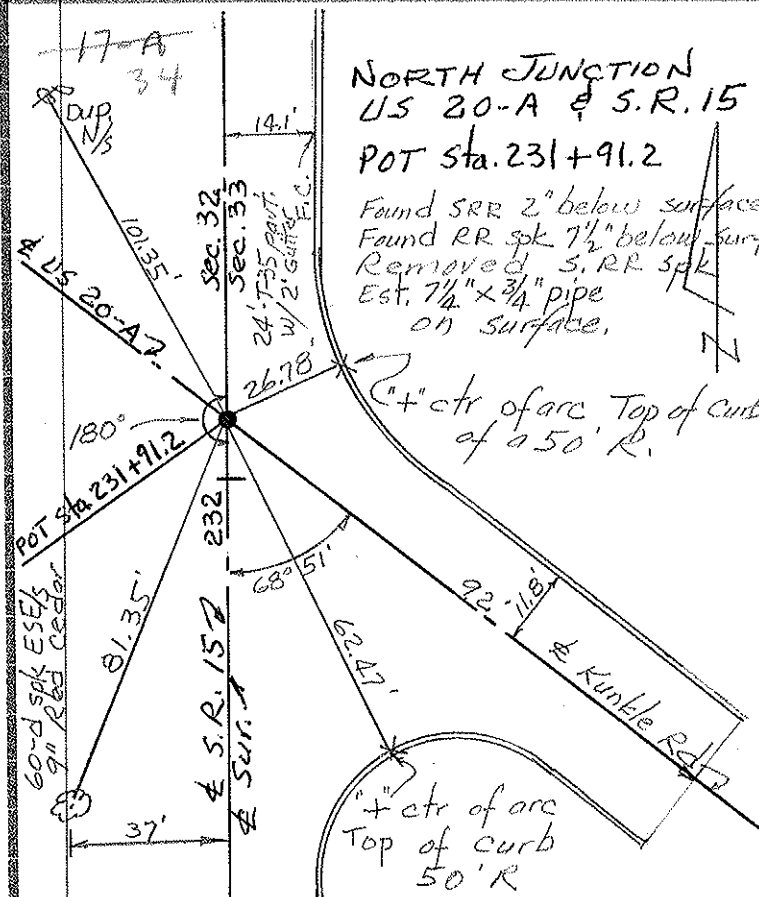
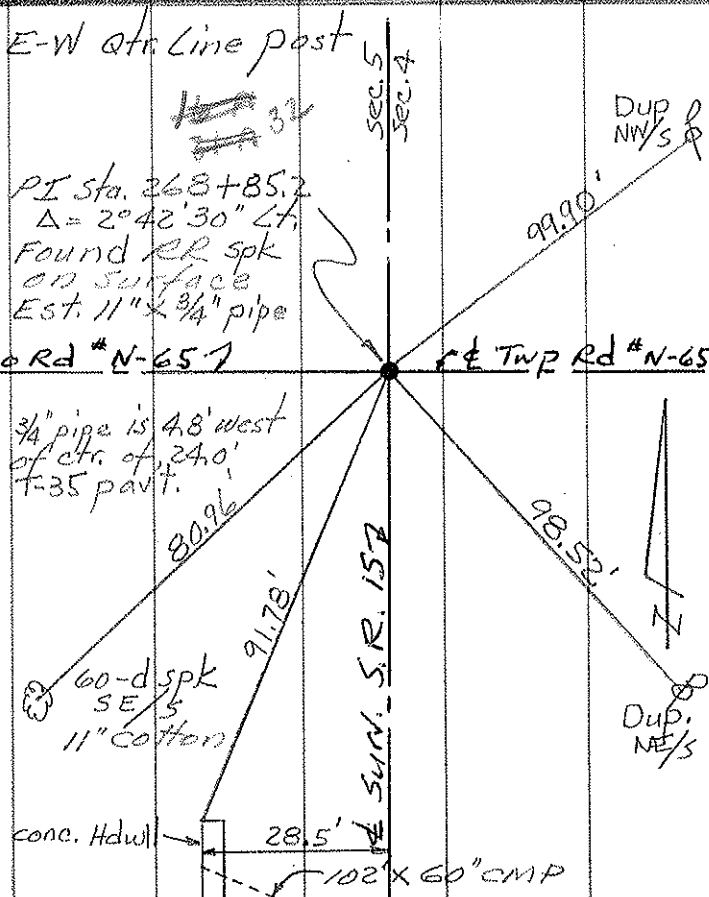
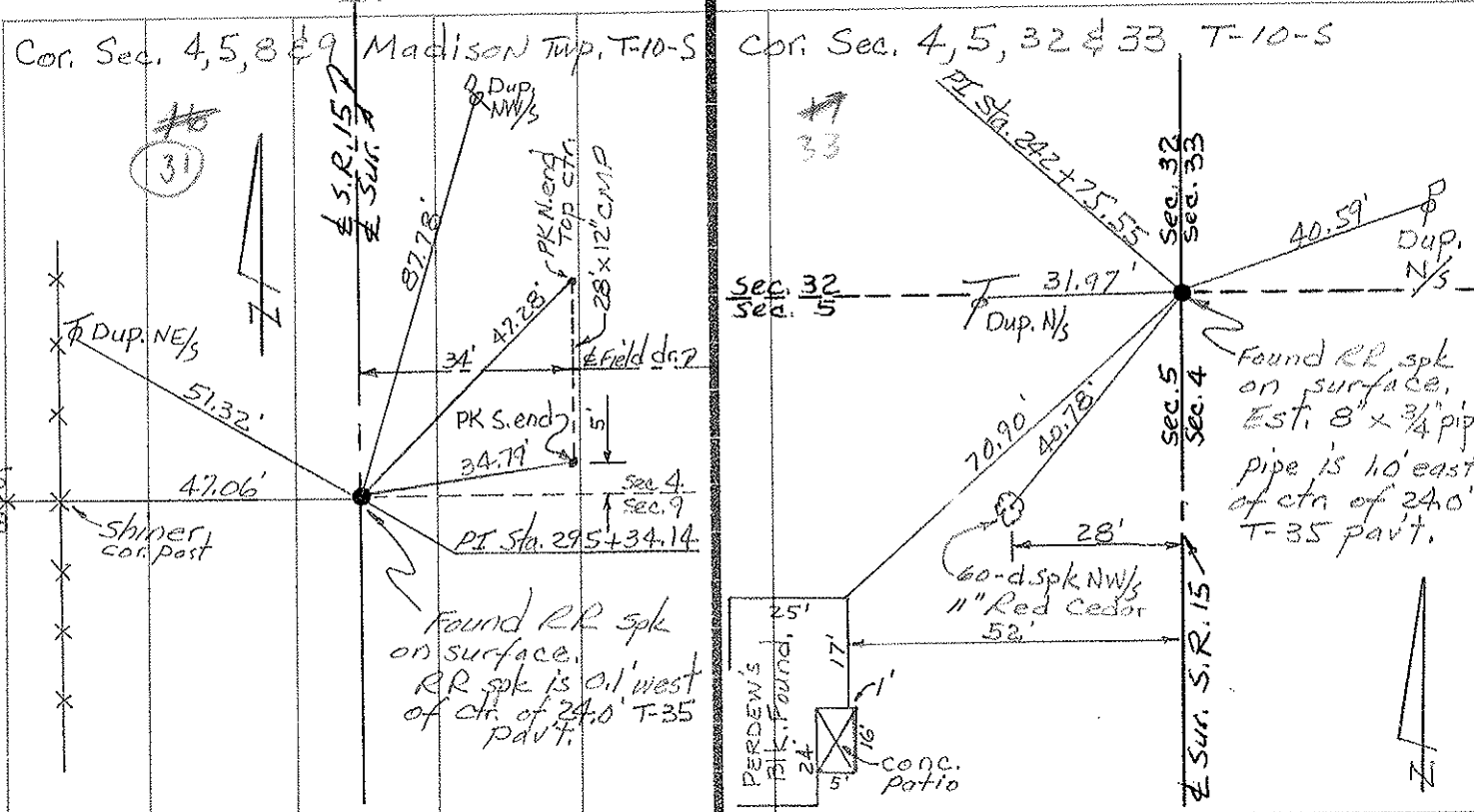


PERSONNEL TITLE PERSONNEL TITLE
 Red Beach
 Newcomb
 Knappe

COUNTY Williams DATE 28 Sept. 1972
 S. R. 15 WEATHER _____
 SEC. Madison Twp. TEMP. _____

CONTROL POINTS

DESCRIPTION LEFT CENTER LINE RIGHT JOB NO. _____



PERSONNEL TITLE PERSONNEL TITLE

Louys
Pessefall
Wise
Krohn

COUNTY Wi.

DATE 7-22-58

S. R. 15.

WEATHER Cloudy

SEC. From Rpt. #20 to Bryan N. Corp. Line

TEMP. 75°

DESCRIPTION

Re-check of Witnesses

JOB NO. _____

LEFT

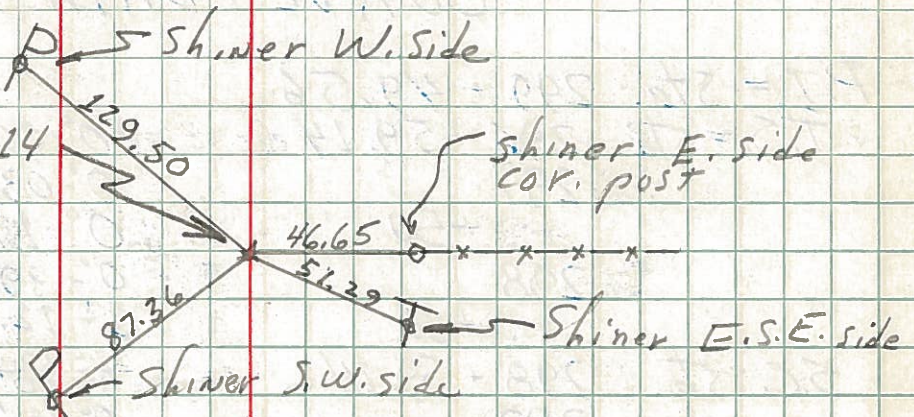
CENTER LINE

RIGHT

230

(31)

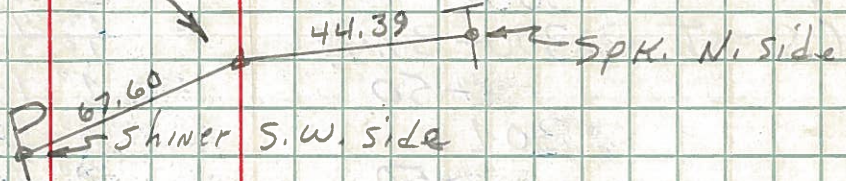
P.O. T-sta 295+34.14
Small R.R. spk.



229

ADD

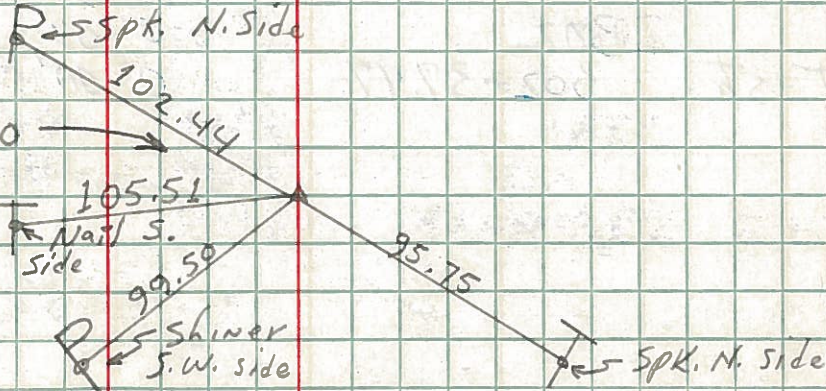
P.T. - sta. 272+90.12
Shiner in part.



228

(32)

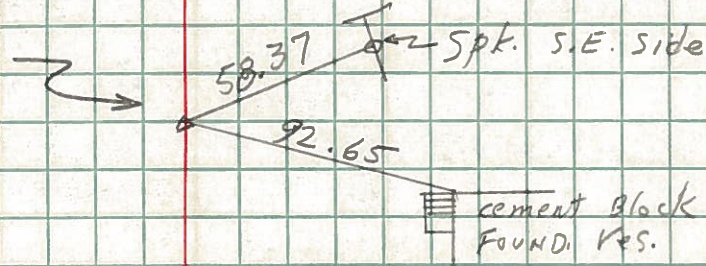
P.I. - sta. 268+85.20
 $\Delta = 2^{\circ}42' LT.$
R.R. Spk. in part.



227

ADD

P.C. - sta. 264+80.12
Shiner in part.



226

ADD

P.T. - sta. 244+70.55
Shiner in part.

