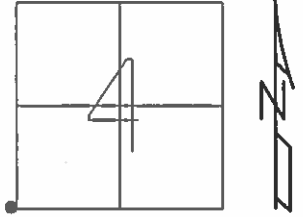


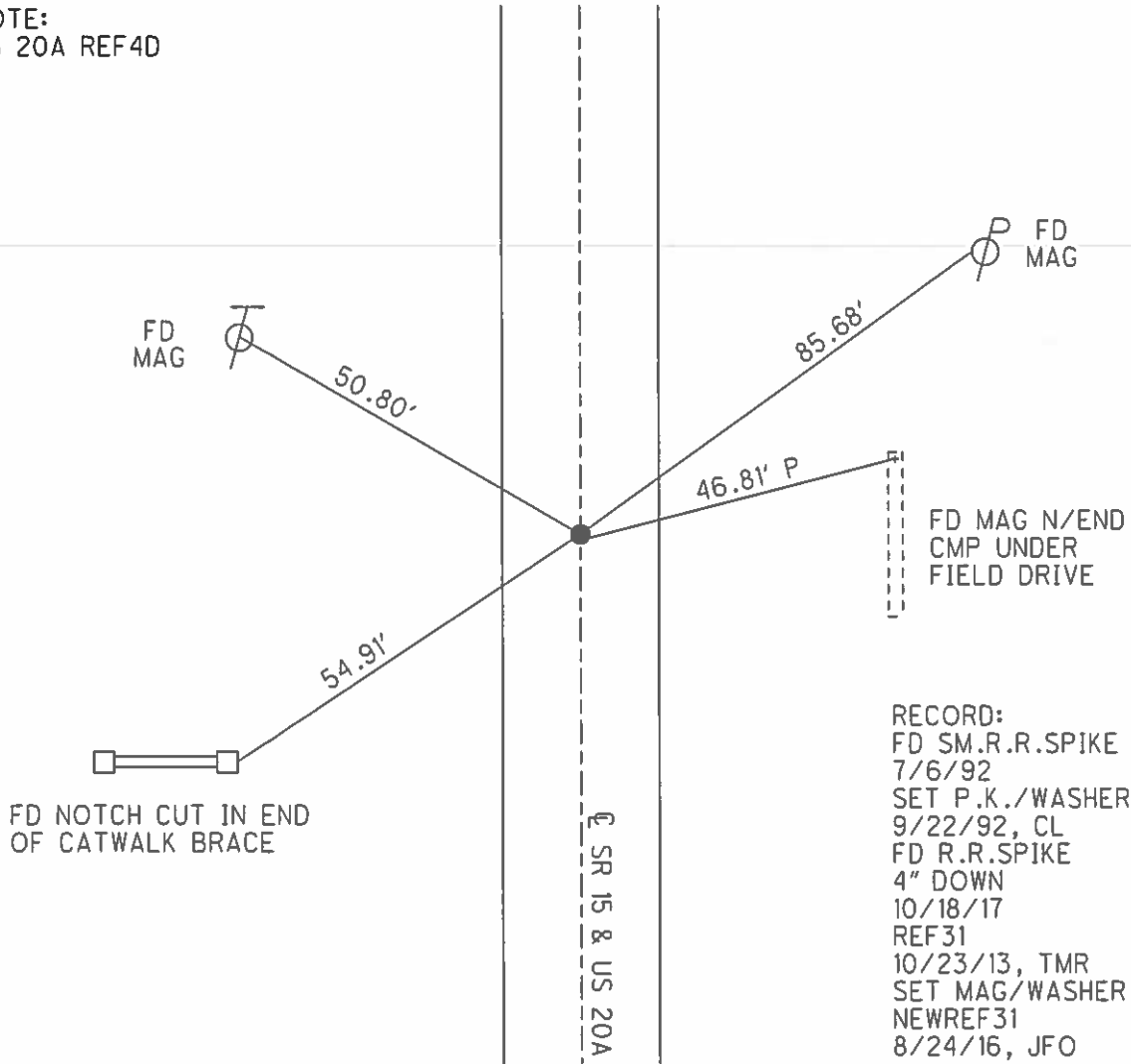
O.D.O.T. DISTRICT 2 SURVEY OFFICE (USE ONLY)

PERSONNEL \_\_\_\_\_ REFERENCE NO. 31 SHEET 4 OF 40  
 NOTES LEU \_\_\_\_\_ DATE 3/29/16 ROUTE SR 15  
 H.C. HOMAN \_\_\_\_\_ WEATHER SUNNY COUNTY WILLIAMS  
 R.C. LEU \_\_\_\_\_ TEMP. 32° TOWNSHIP MADISON  
 \_\_\_\_\_ SECTION 4  
 \_\_\_\_\_ T 10 S R 2 W

TYPE MONUMENT R.R.SPIKE  
~~ON SURFACE~~ - BELOW 4"  
~~LEFT~~ - CL PAV'T - ~~RIGHT~~ ON \_\_\_\_\_  
12.3' TO W EDGE PAVEMENT  
 S.L.M. 486+34.30  
 GRID: NORTHING: 719010.130 EASTING: 1407057.375



NOTE:  
US 20A REF4D



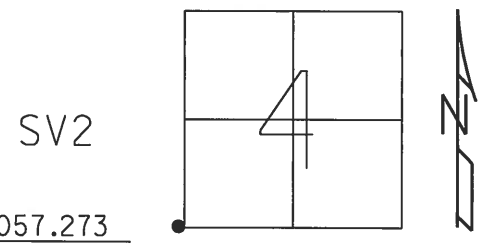
RECORD:  
 FD SM.R.R.SPIKE  
 7/6/92  
 SET P.K./WASHER  
 9/22/92, CL  
 FD R.R.SPIKE  
 4" DOWN  
 10/18/17  
 REF31  
 10/23/13, TMR  
 SET MAG/WASHER  
 NEWREF31  
 8/24/16, JFO

O.D.O.T. DISTRICT 2 SURVEY OFFICE (USE ONLY)

PERSONNEL \_\_\_\_\_ REFERENCE NO. 31 SHEET 23 OF 39

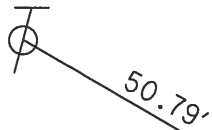
NOTES NUHFER DATE 7/26/07 ROUTE SR 15  
 H.C. HUSS WEATHER MILD COUNTY WILLIAMS  
 R.C. VIETH TEMP. 70° TOWNSHIP MADISON  
 SECTION 4  
 T 10 S R 2 W

TYPE MONUMENT \_\_\_\_\_ P.K./WASHER  
 ON SURFACE - ~~BELOW~~ \_\_\_\_\_ ON \_\_\_\_\_  
~~LEFT~~ - CL PAV'T - ~~RIGHT~~ \_\_\_\_\_ ON \_\_\_\_\_  
12.2' TO W EDGE PAVEMENT  
 S.L.M. 295+34.14  
 GRID: NORTHING: 719010.189 EASTING: 1407057.273



RECORD:  
 FD SM.R.R.SPIKE  
 7/6/92  
 SET P.K./WASHER  
 9/22/92, CL

FD. MAG NAIL  
 SE-SIDE  
 PP#1500-168



50.79'

FD N/S  
 SW-SIDE

85.65'

46.82'

SET MAG NAIL  
 IN TOP  
 N-END OF CMP

54.88'



FD. NOTCH CUT IN END  
 OF CATWALK BRACE

CL SR 15 & US 20A

# O.D.O.T. DISTRICT 2 SURVEY OFFICE

PERSONNEL

REFERENCE NO. 31

SHEET 4 OF 16

NOTES LOEHRKE

H.C. CURTIS

R.C. ROMERO

DATE 7-10-92

WEATHER MILD

TEMP. +70°

SR 15

ROUTE U.S. 20-A

COUNTY Williams

TOWNSHIP MADISON

SECTION 4

T 10 S R 2 W

TYPE MONUMENT P.K. / WASHER

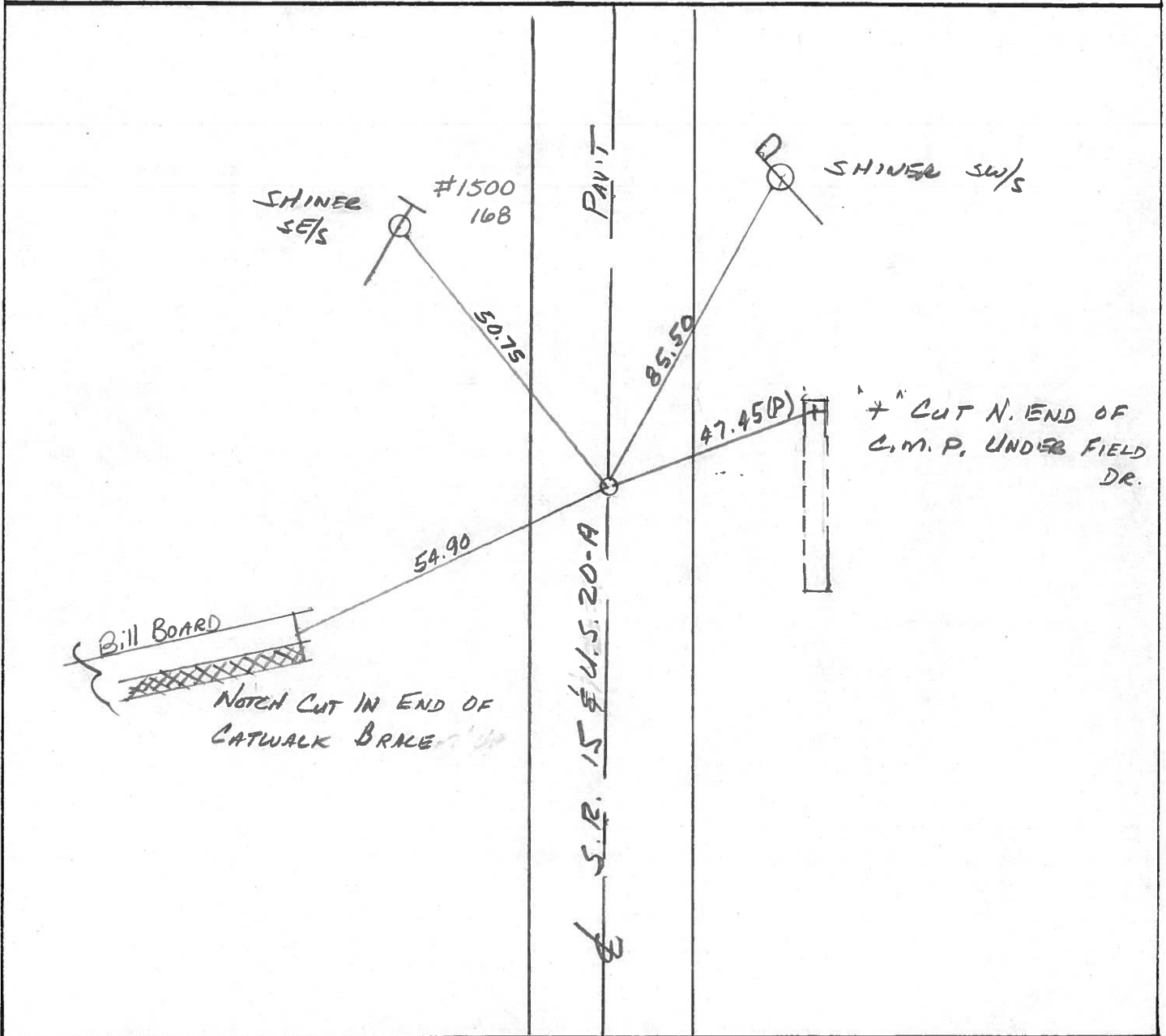
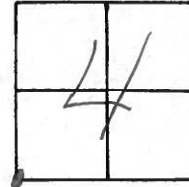
Set P.K. / WASHER  
9-22-92

ON SURFACE - BELOW YES

LEFT - ☉ PAV'T. - RIGHT ☉ PAV'T

12.3 TO W. EDGE PAVEMENT

S.L.M. 124 + 03



County Williams S.R. 15 & US 20-A

Date 9-7-82

Township MADISON

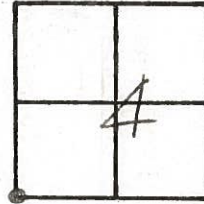
Weather LT. Rain

Section 4

Temp. +55°

T10<sup>S</sup>, R2<sup>W</sup>

Personnel HOFFMAN



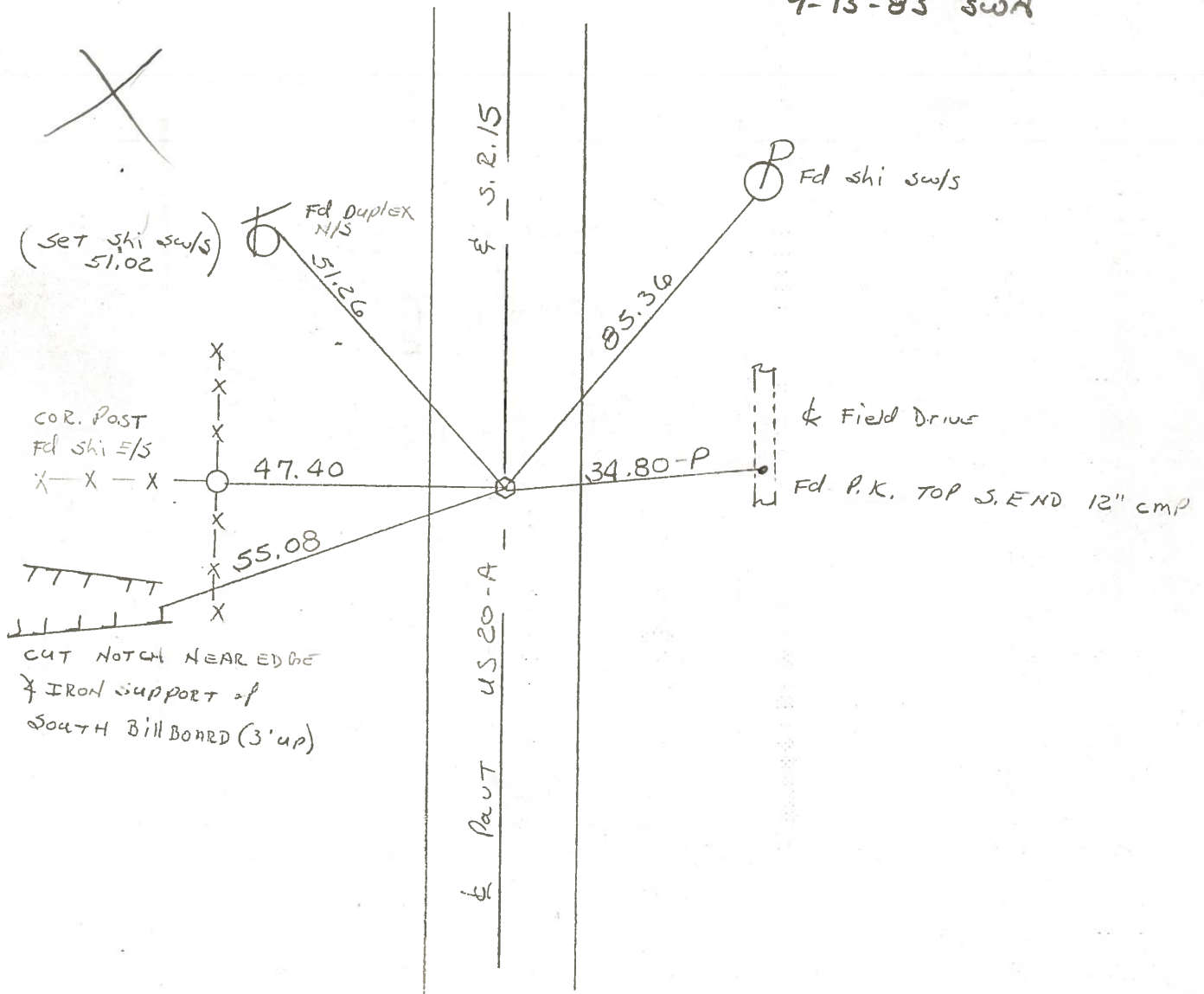
#31

&  
CREW

Fd R.R. SPK @ SURFACE  
ON & PAUT  
11.9' TO E.E.P.  
12.3' TO W.E.P.

S.L.M. 123+69

SET P.K./WASHER  
9-13-83 SWN



County WILLIAMS S.R. 15

Date 11-27-79 9-7-82

Township MADISON

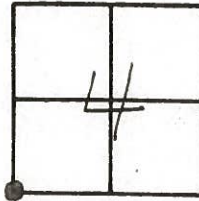
Weather CLOUDY LT Rain

Section 4

Temp. +42° +55°

T10B, R2W

Personnel BURNSIDE Hoffmaul  
SMITH &  
MEAD crew



(31)

FD. R.R. SPK @ SURFACE E IN CTR. PAVÉ.

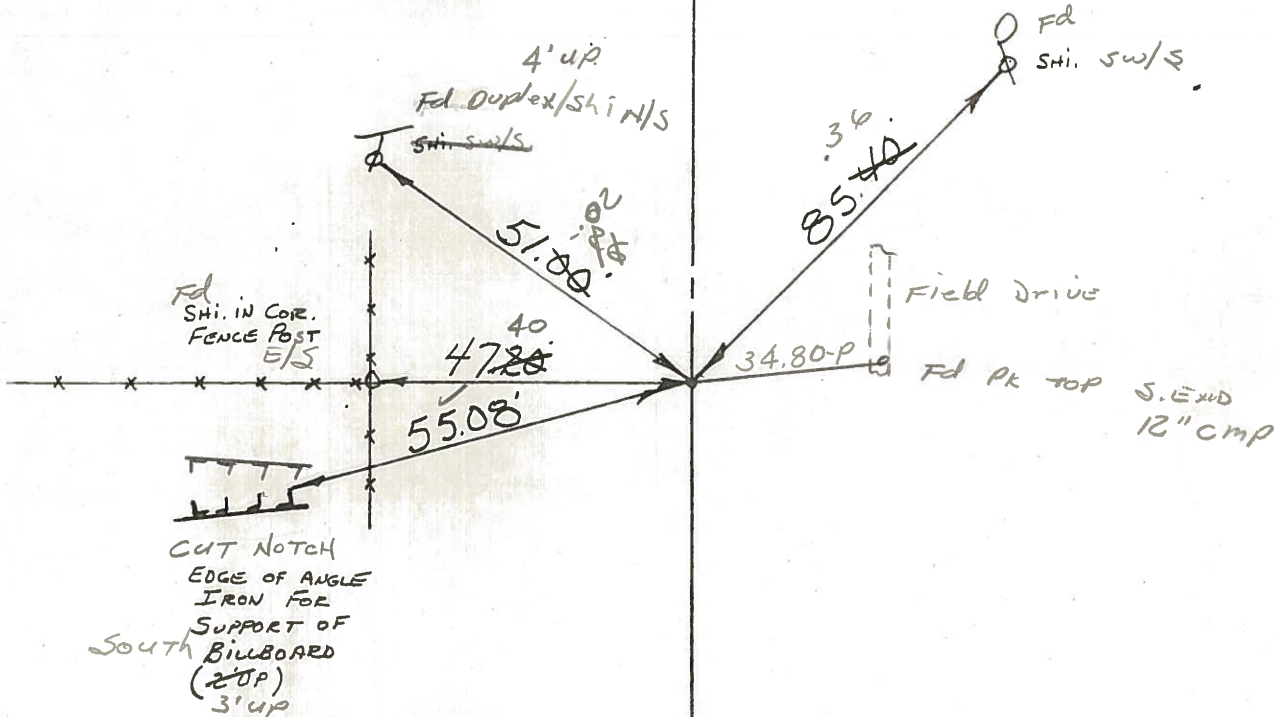
1-18-83

12.3' TO W. EP

11.9 TO E. EP

U.S. 20-ALT.

S.R. 15 E





County WILLIAMS S.R. 15

Date 11-27-79

Township MADISON

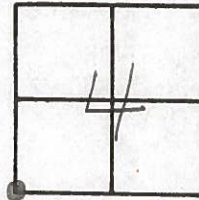
Weather CLOUDY

Section 4

Temp. +42°

~~T10~~, ~~R2E~~

Personnel BURNSIDE



SMITH

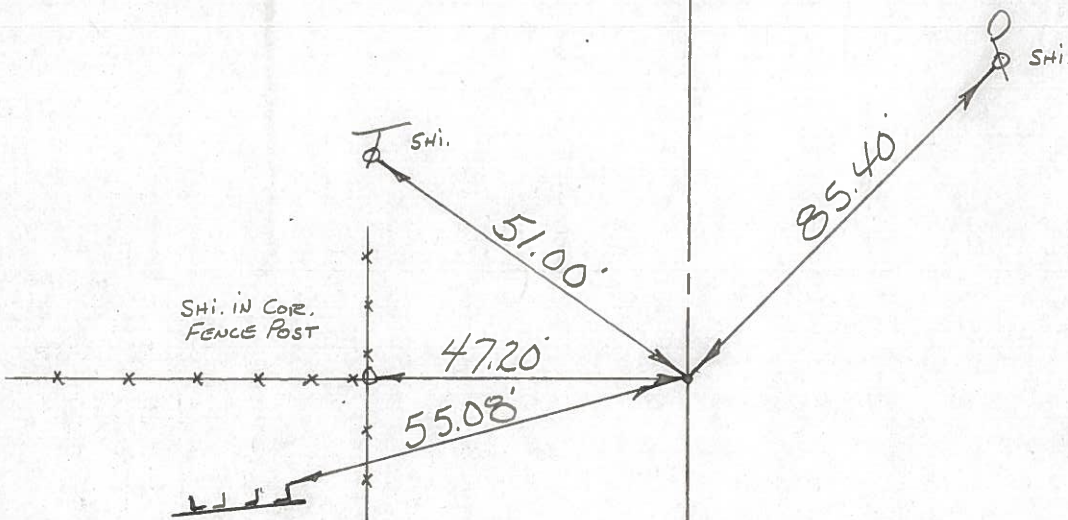
MEAD

~~200~~

(31)

FD. P.R. SPK. @  
SURFACE E' IN  
CTR. PAVE.

U.S. 20-ALT.



EDGE OF ANGLE  
IRON FOR  
SUPPORT OF  
BILLBOARD  
(2' UP)

X

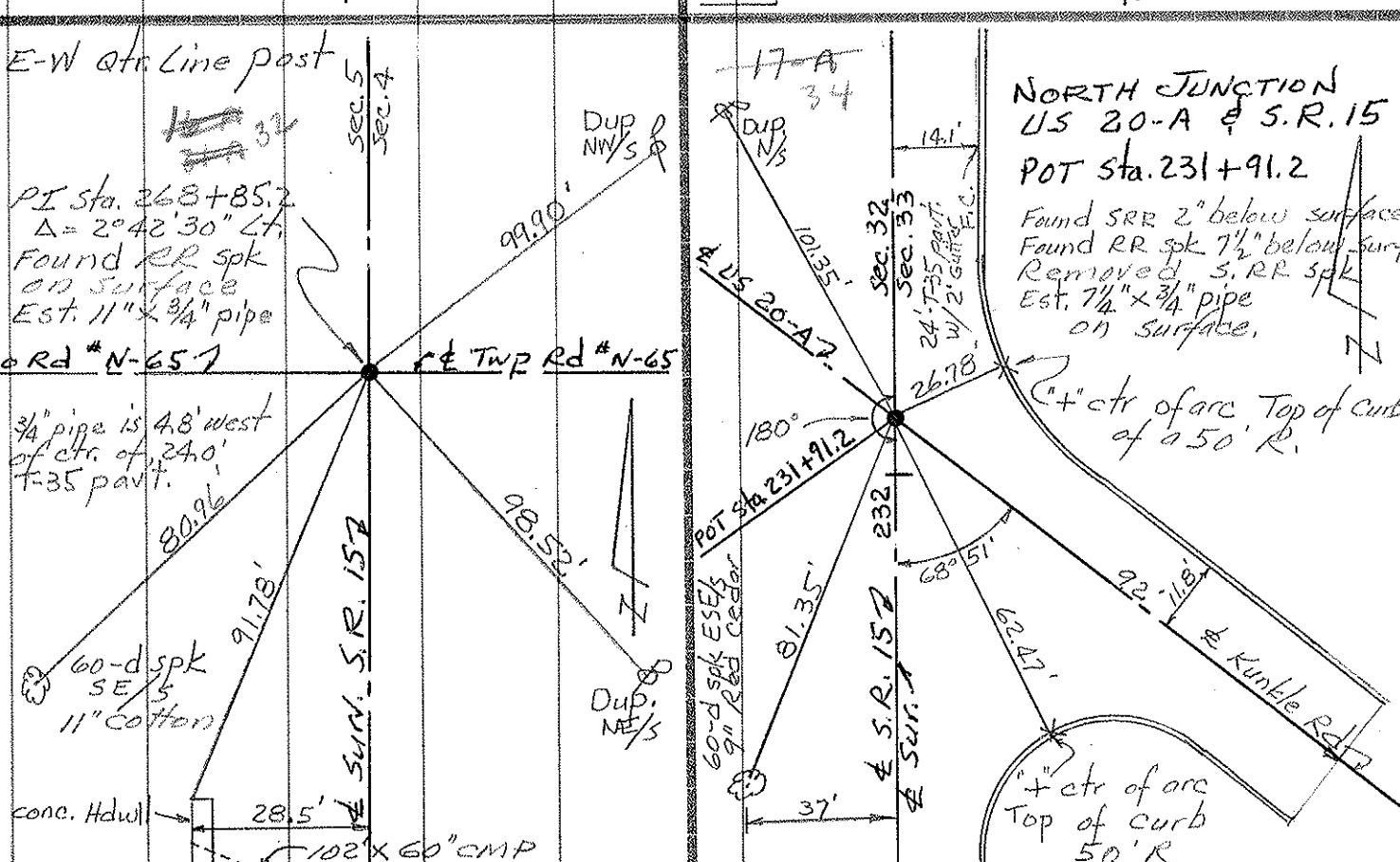
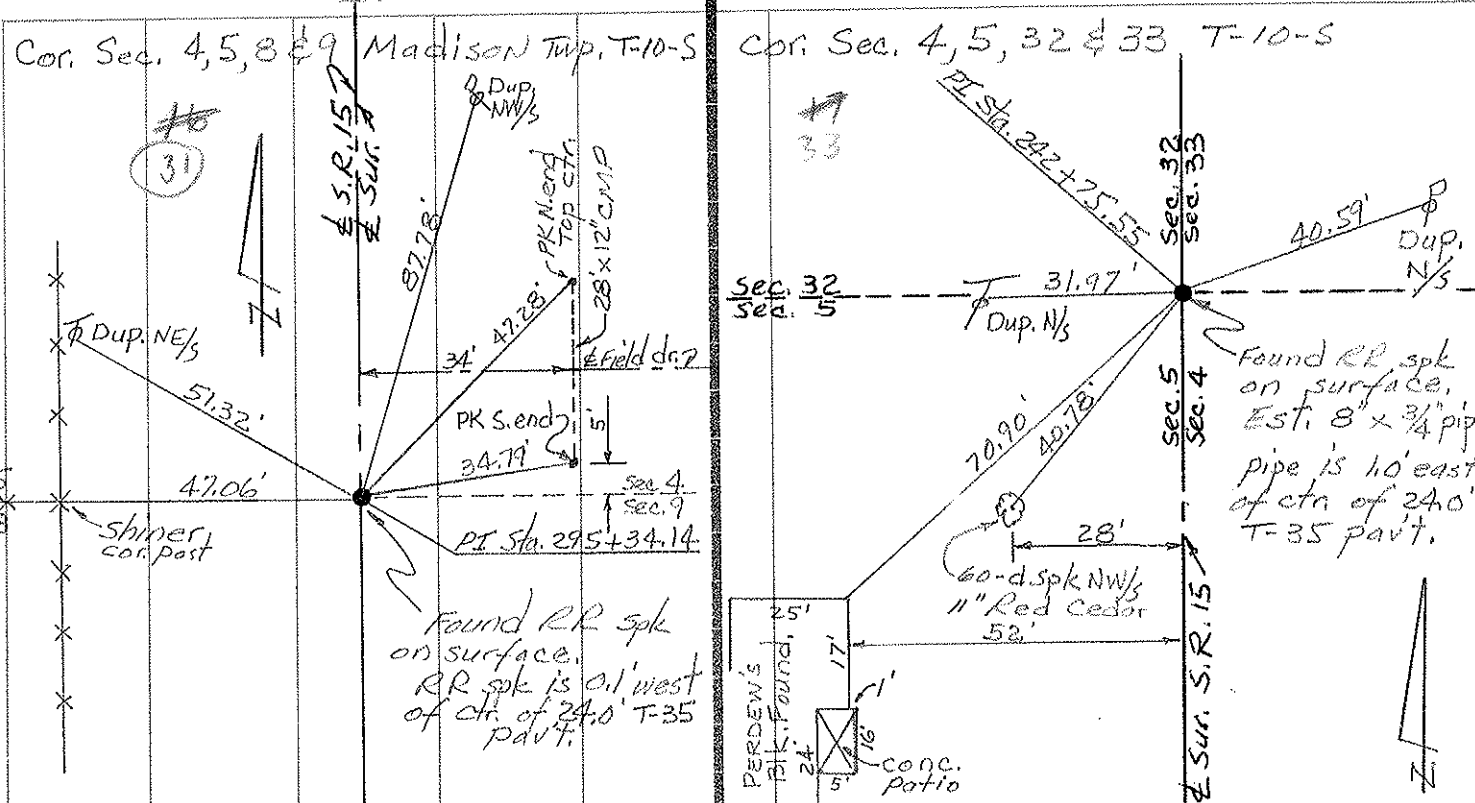
SR. 15 E

PERSONNEL TITLE PERSONNEL TITLE  
 Red Beach  
 Newcomb  
 Knappe

COUNTY Williams DATE 28 Sept. 1972  
 S. R. 15 WEATHER \_\_\_\_\_  
 SEC. Madison Twp. TEMP. \_\_\_\_\_

CONTROL POINTS

DESCRIPTION LEFT CENTER LINE RIGHT JOB NO. \_\_\_\_\_





PERSONNEL TITLE PERSONNEL TITLE

County Wi. DATE 7-22-58  
 S. R. 15. WEATHER Cloudy  
 From Pt. #20 to  
 SEC. Bryan N. Corp. Line TEMP. 75°

DESCRIPTION Re-check of Witnesses JOB NO. \_\_\_\_\_

LEFT CENTER LINE RIGHT

