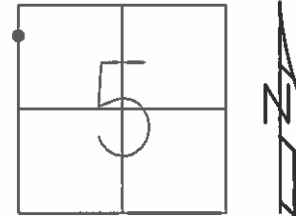


O.D.O.T. DISTRICT 2 SURVEY OFFICE (USE ONLY)

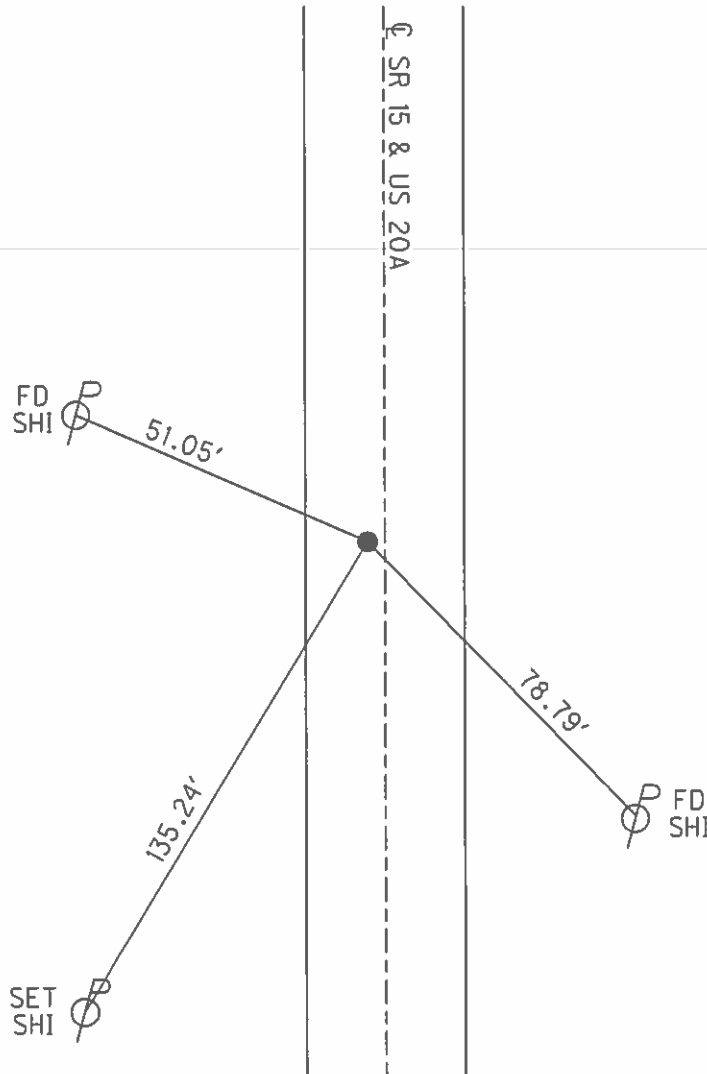
PERSONNEL \_\_\_\_\_ REFERENCE NO. 28 B SHEET 18 OF 40  
 NOTES O'DONNELL DATE 4/1/16 ROUTE SR 15  
 H.C. RHOADES WEATHER CLOUDY COUNTY WILLIAMS  
 R.C. O'DONNELL TEMP. 43° TOWNSHIP JEFFERSON  
 \_\_\_\_\_ SECTION 5  
 \_\_\_\_\_ T 7 N R 3 E

TYPE MONUMENT P.K./WASHER  
 ON SURFACE - ~~BELOW~~ ON  
~~LEFT~~ - Q PAV'T - RIGHT 4.5'  
8.8' TO RT EDGE PAVEMENT  
 S.L.M. 569+44.65  
 GRID: NORTHING: 710844.856 EASTING: 1406245.011



NOTE:  
US 20A REF40

RECORD: P.I.  
FD R.R.SPIKE  
ON SURFACE  
7/16/92  
SET P.K./WASHER  
9/22/92, CL  
FD P.K./WASHER  
10/22/13  
REFB28  
10/23/13, TMR  
SET MAG/WASHER  
NEWREFB28  
8/29/16, JFO



O.D.O.T. DISTRICT 2 SURVEY OFFICE (USE ONLY)

PERSONNEL \_\_\_\_\_ REFERENCE NO. 28 B SHEET 36 OF 39

NOTES NUHFER DATE 6/20/07 ROUTE SR 15  
 H.C. NUHFER WEATHER SUNNY COUNTY WILLIAMS  
 R.C. HUSS TEMP. 75° TOWNSHIP JEFFERSON  
 \_\_\_\_\_ SECTION 5  
 \_\_\_\_\_ T 7 N R 3 E

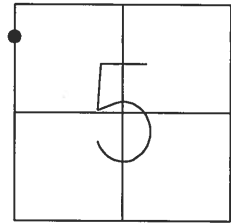
TYPE MONUMENT MAG/WASHER

ON SURFACE - ~~BELOW~~ ON \_\_\_\_\_

LEFT - CL PAV'T - RIGHT 2.9' WEST  
8.8' TO RT EDGE PAVEMENT

S.L.M. 377+97.09

GRID: NORTHING: \_\_\_\_\_ EASTING: \_\_\_\_\_



RECORD: P.I.  
 FD R.R.SPIKE  
 ON SURFACE  
 7/16/92  
 SET P.K./WASHER  
 9/22/92, CL

FD. MAG NAIL  
 SE-SIDE  
 PP#1500-104



50.79'

FD N/S  
 E-SIDE



51.05'

CL SR 15 & US 20A

78.85'

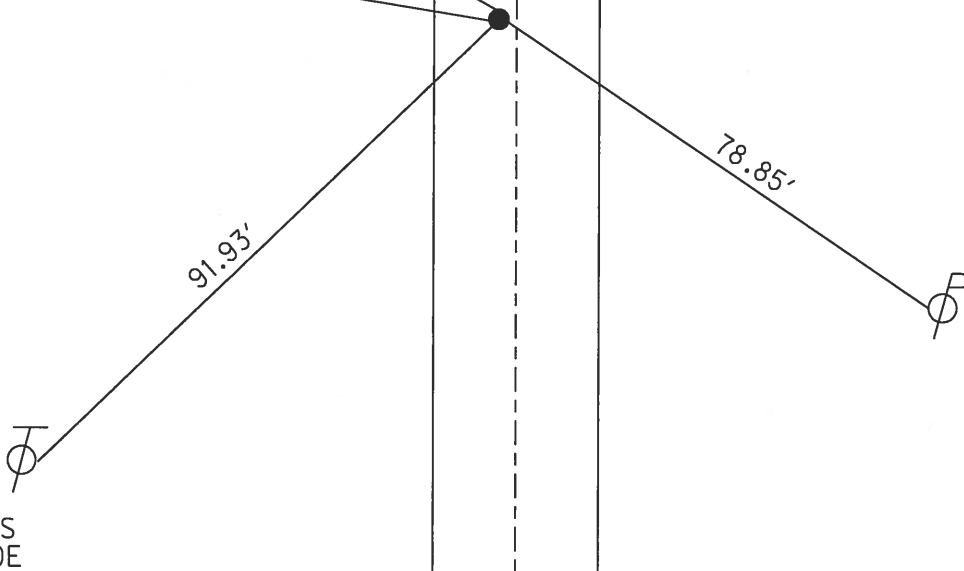


FD N/S  
 N-SIDE

91.93'



FD N/S  
 SW-SIDE



# O.D.O.T. DISTRICT 2 SURVEY OFFICE

PERSONNEL

REFERENCE NO. 28-B

SHEET 14 OF 16

NOTES LOEHRKE

SR 15

H.C. CURTIS

DATE July 16-92

ROUTE U.S. 20-A

R.C. ROMERO

WEATHER Pt Cloudy

COUNTY Williams

FALKOWSKI

TEMP. +75

TOWNSHIP JEFFERSON

SECTION 5

T 7 N R 3 E

RESET

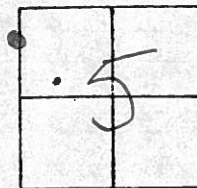
TYPE MONUMENT P.K./WASHER 9-22-92

ON SURFACE - BELOW Yes

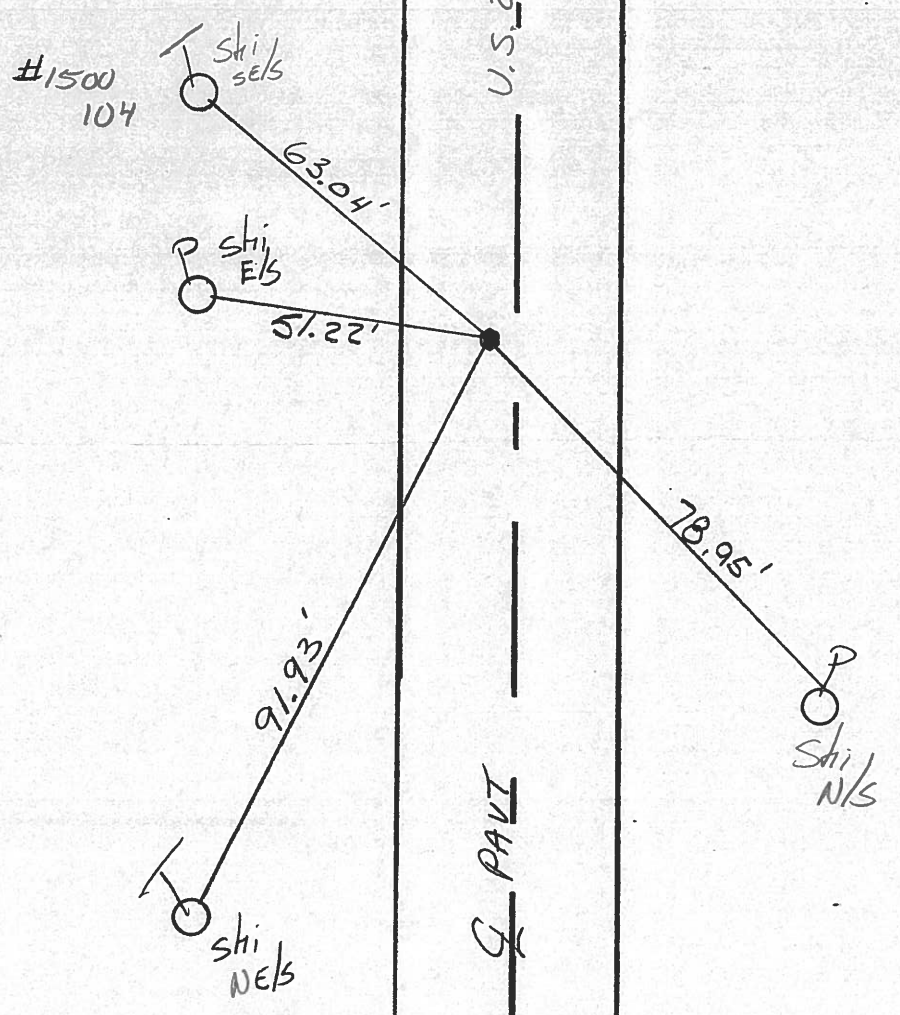
~~LEFT~~ - Q PAV'T. - RIGHT 2.9'

B.B. TO Rt EDGE PAVEMENT

S.L.M. 207 707



Record: APPEARS TO BE P.I.  
FD, R.R. SPIC ON SURFACE



County Williams S.R. 15 & 4520-A

Date 9-7-82

Township JEFFERSON

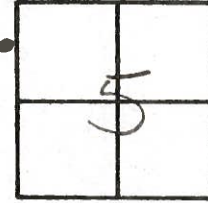
Weather OVERCAST

Section 5

Temp. +55°

T7N, R3E

Personnel HOFFMAN



&

CREW

24-B

Fd R.R. ~~SPK~~ ON SURFACE; APPEARS TO BE P.I. S.L.M. 206+83

2.8' WEST of & PAUT

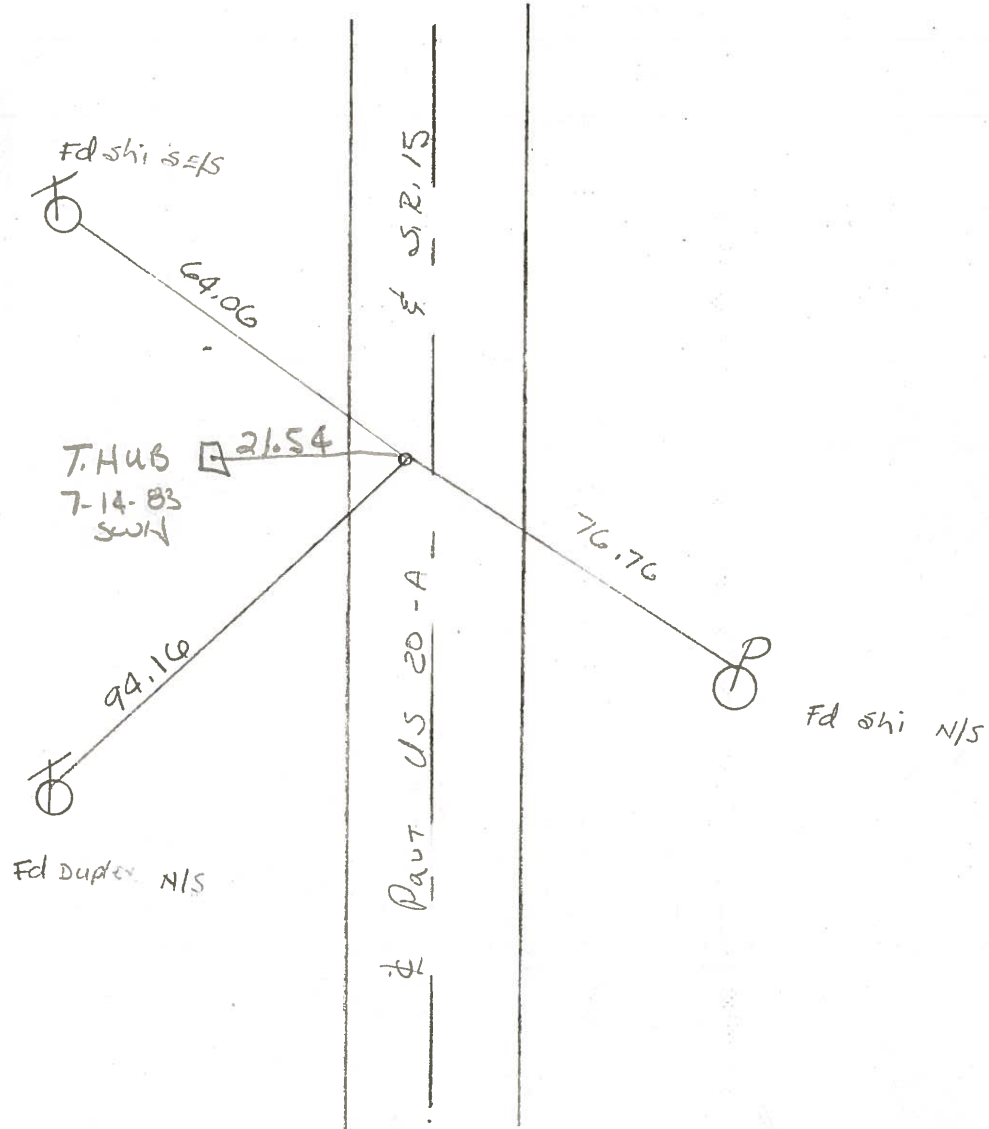
14.6' TO E. E.P.

9.4' TO W. E.P.

SET P.K. / WASHER

9-13-83 SWH

X





PERSONNEL	TITLE	PERSONNEL	TITLE
Beach			
Possefall			
Wise			
Dierks			

COUNTY Wi. DATE 2-20-58  
 S. R. 15 WEATHER \_\_\_\_\_  
 FROM Rt # 20 N. to \_\_\_\_\_  
 SEC. BRYAN N. Corp. Limit TEMP \_\_\_\_\_

DESCRIPTION \_\_\_\_\_ LEFT \_\_\_\_\_ CENTER LINE \_\_\_\_\_ RIGHT \_\_\_\_\_ JOB NO. \_\_\_\_\_

