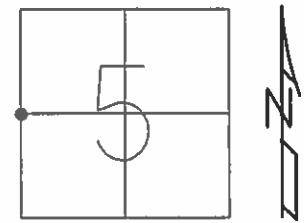


O.D.O.T. DISTRICT 2 SURVEY OFFICE (USE ONLY)

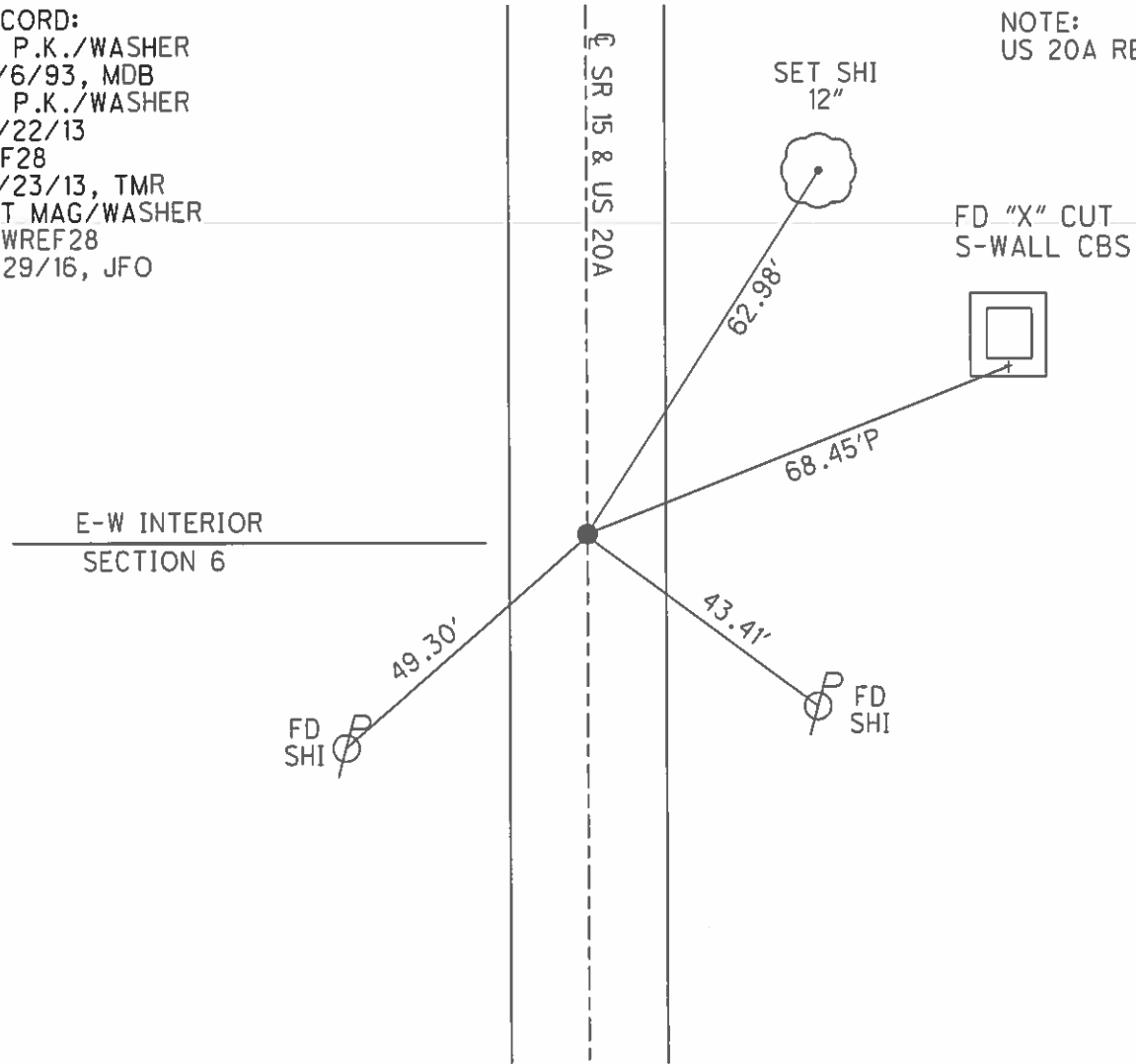
PERSONNEL _____ REFERENCE NO. 28 SHEET 20 OF 40
 NOTES O'DONNELL DATE 4/1/16 ROUTE SR 15
 H.C. RHOADES WEATHER CLOUDY COUNTY WILLIAMS
 R.C. O'DONNELL TEMP. 43° TOWNSHIP JEFFERSON
 _____ SECTION 5
 _____ T 7 N R 3 E

TYPE MONUMENT P.K./WASHER
 ON SURFACE - ~~BELOW~~ ON
 LEFT - ☉ PAV'T - RIGHT ON
11.7' TO RT EDGE PAVEMENT
 S.L.M. 590+06.81
 GRID: NORTHING: 708783.265 EASTING: 1406192.693



RECORD:
 FD P.K./WASHER
 12/6/93, MDB
 FD P.K./WASHER
 10/22/13
 REF28
 10/23/13, TMR
 SET MAG/WASHER
 NEWREF28
 8/29/16, JFO

NOTE:
 US 20A REF4S

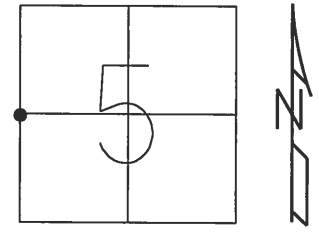


O.D.O.T. DISTRICT 2 SURVEY OFFICE (USE ONLY)

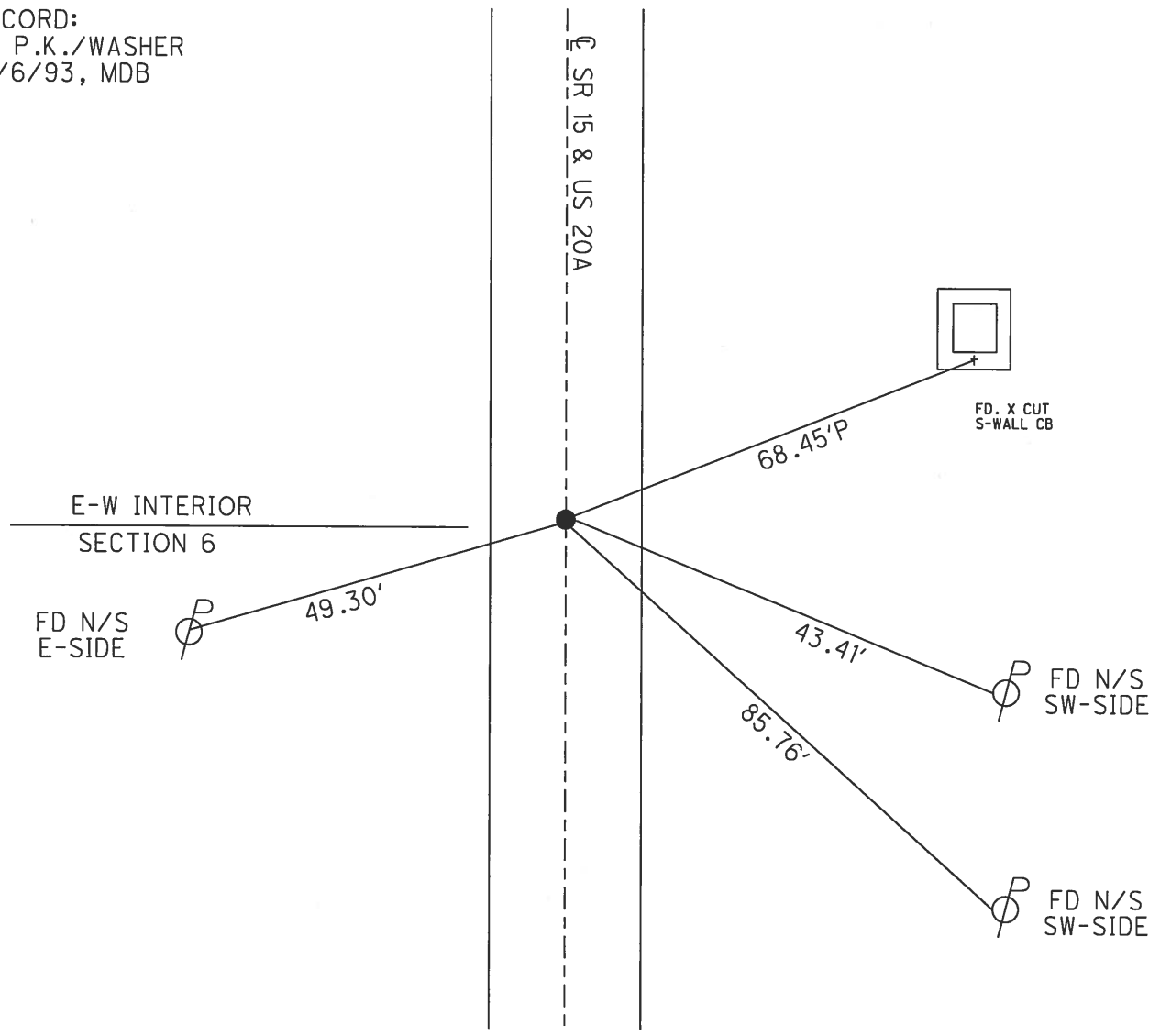
PERSONNEL _____ REFERENCE NO. 28 SHEET 38 OF 39

NOTES NUHFER DATE 6/20/07 ROUTE SR 15
 H.C. NUHFER WEATHER SUNNY COUNTY WILLIAMS
 R.C. HUSS TEMP. 75° TOWNSHIP JEFFERSON
 _____ SECTION 5
 _____ T 7 N R 3 E

TYPE MONUMENT P.K./WASHER
 ON SURFACE - ~~BELOW~~ _____ ON _____
 LEFT - ☉ PAV'T - RIGHT _____ ON _____
12.12' TO LT EDGE PAVEMENT
 S.L.M. 398+59.81
 GRID: NORTHING: _____ EASTING: _____



RECORD:
 FD P.K./WASHER
 12/6/93, MDB



O.D.O.T. DISTRICT 2 SURVEY OFFICE

PERSONNEL

REFERENCE NO. 28^{SP}15

SHEET 5 OF 7

NOTES BARNHISEC

H.C. VAN DUSEN

R.C. CORDES

DATE 12-6-93

WEATHER RAIN

TEMP. +40°

ROUTE 15 & US 20-A

COUNTY WILLIAMS

TOWNSHIP JEFFERSON

SECTION 5

T 7 N R 3 E

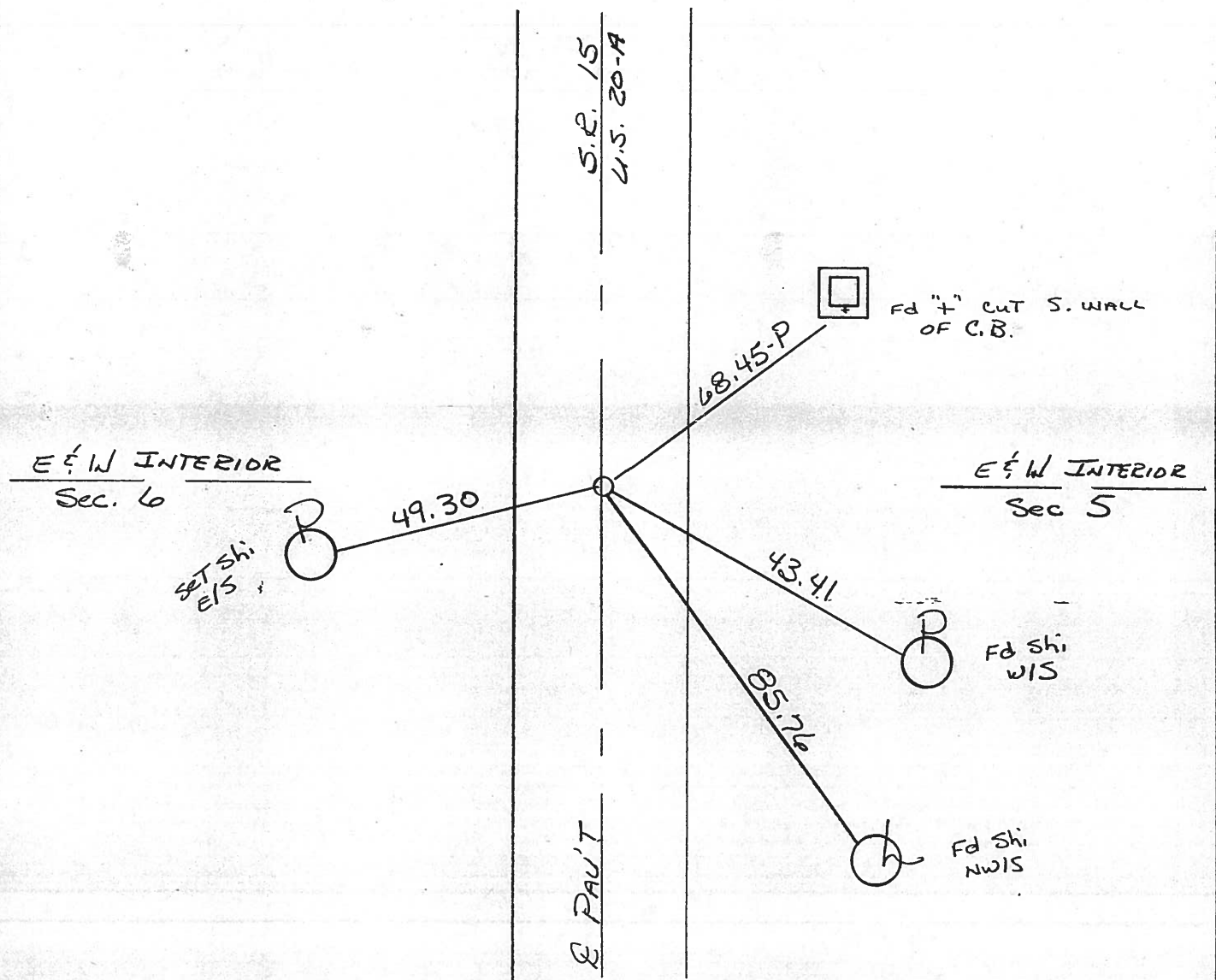
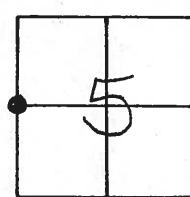
TYPE MONUMENT PK & WASHER

ON SURFACE - ~~ELSON~~ yes

~~PAV'T.~~ - ~~PAV'T.~~ yes

11.7 TO RT EDGE PAVEMENT

S.L.M. 398+61.58



Q.D.O.T. DISTRICT 2 SURVEY OFFICE

SHEET _____ OF _____

County Williams S.R. 15 U.S. 20-A

Date 9-7-82

Township JEFFERSON

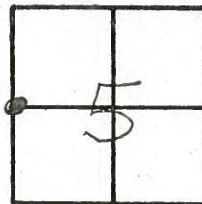
Weather OVERCAST

Section 5

Temp. +55°

T2N, R3E

Personnel HOFFMAN



28

‡
CREW

Fd R.R. SPK IN & PAUT @ SURFACE

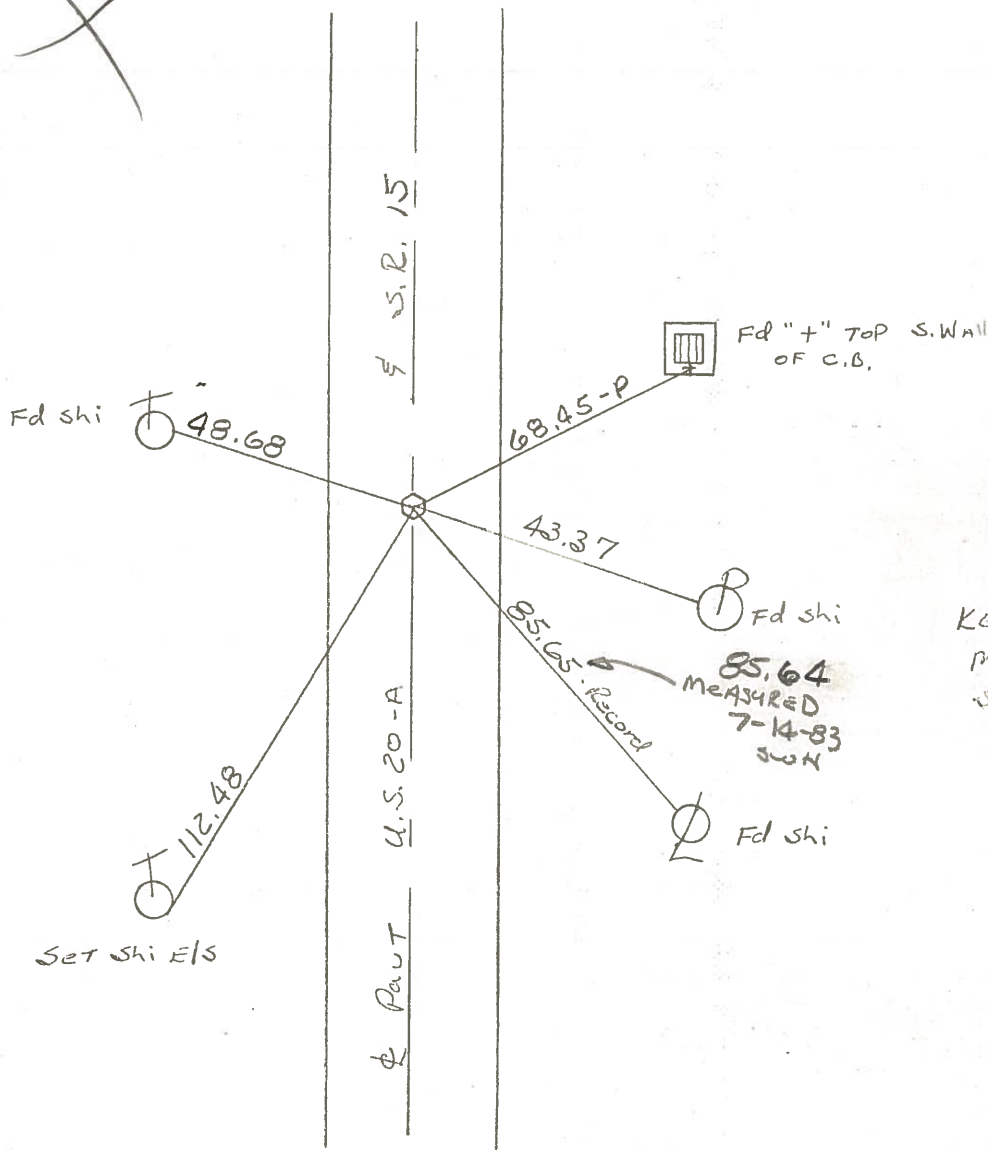
S.L.M. 227+46

Set P.K. / WASHER
9-13-83 SWN



E & W INTERIOR
SEC 6

E & W INTERIOR
SEC 5



KEVIN'S
MOTOR
SHAKES

County Williams S.R. 15 U.S. 20

Date 11-13-79 9-7-82

Township JEFFERSON

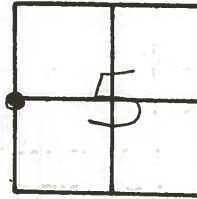
Weather CLOUDY overcast

Section 5

Temp. +40° +55°

T7N, R3E

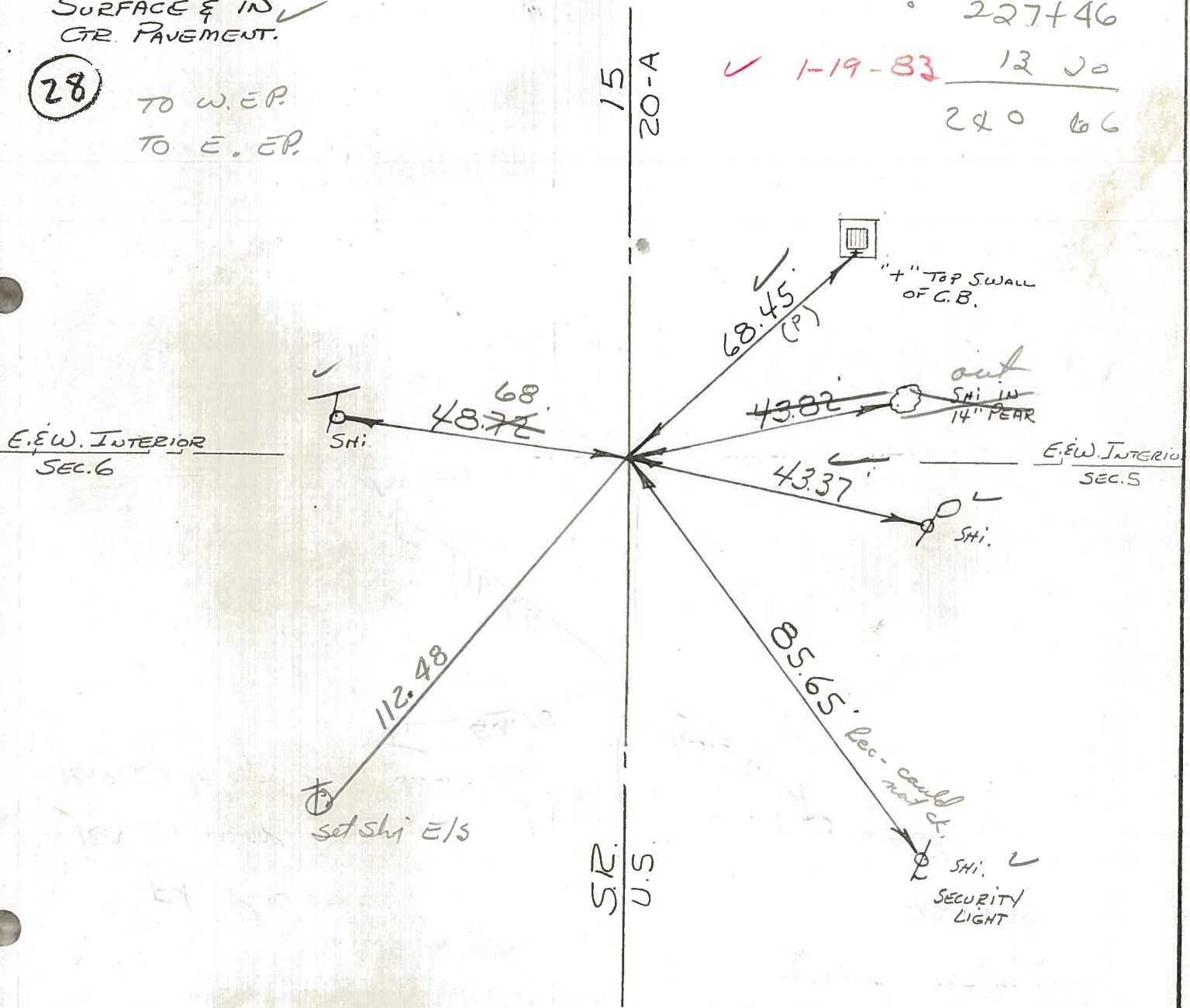
Personnel BURNSIDE Hoffmann
SMITH E
BOWERS crew
MEAD



FD. R.R. SPK. @
 SURFACE & IN
 CTR. PAVEMENT.

(28) TO W. EP.
 TO E. EP.

~~228458?~~ 227+46
 ✓ 1-19-83 12 00
 240 66



OVER

County WILLIAMS S.R. 15th U.S. 20

Date 11-13-79

Township JEFFERSON

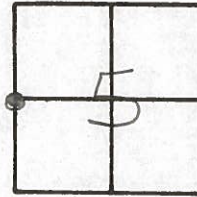
Weather CLOUDY

Section 5

Temp. +40°

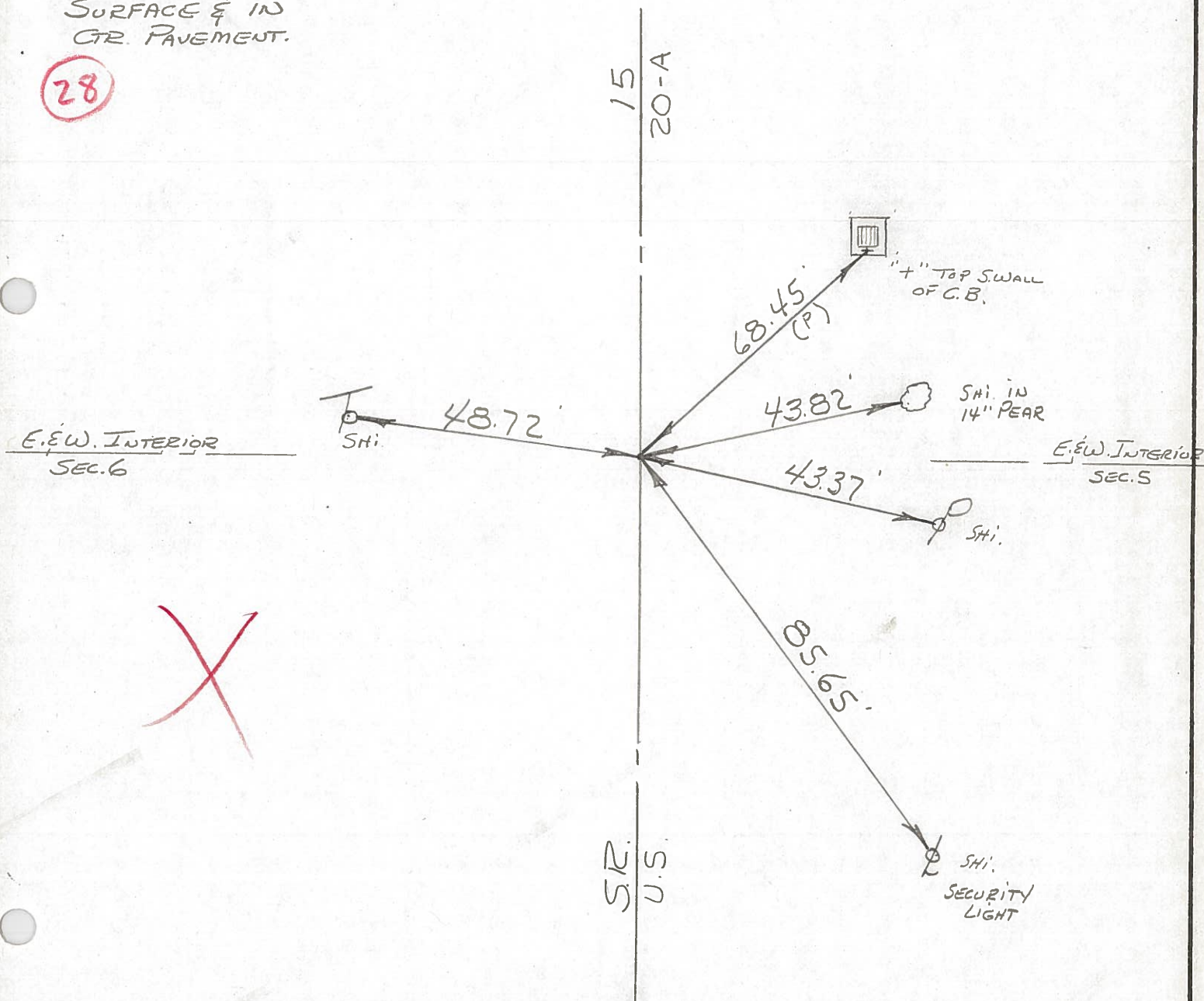
T7N, R3E

Personnel BURNSIDE
SMITH
BOWERS
MEAD



FD. R.R. SPK. @
 SURFACE & IN
 CTR. PAVEMENT.

28



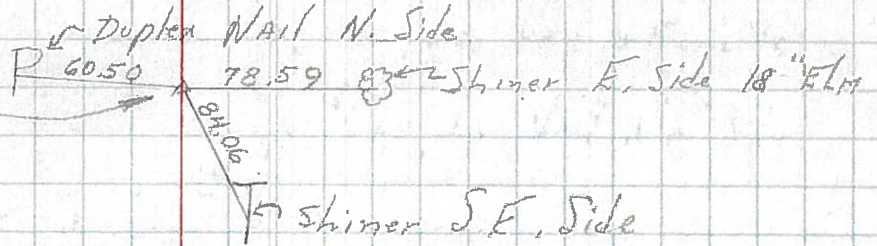
| PERSONNEL | TITLE | PERSONNEL | TITLE |
|-----------|-------|-----------|-------|
| Beach | | | |
| Pessefall | | | |
| Wise | | | |
| Dierks | | | |

COUNTY Wi. DATE 2-20-58
 S. R. 15 WEATHER _____
 SEC. BRYAN Ab Corp. Limit TEMP. _____

DESCRIPTION _____ LEFT _____ CENTER LINE _____ RIGHT _____ JOB NO. _____

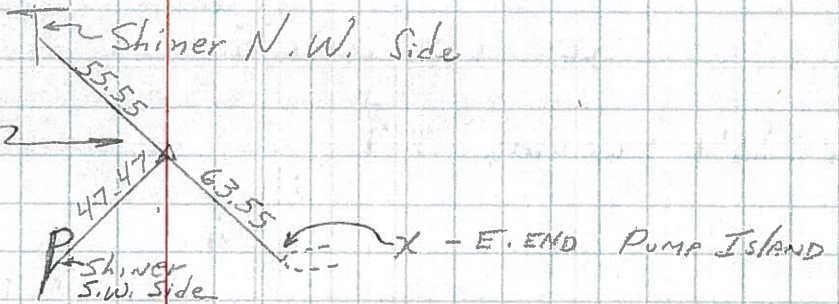
249 26

P.O.T. STA. 451 + 50.53
 $\Delta = 0^{\circ}-00'$



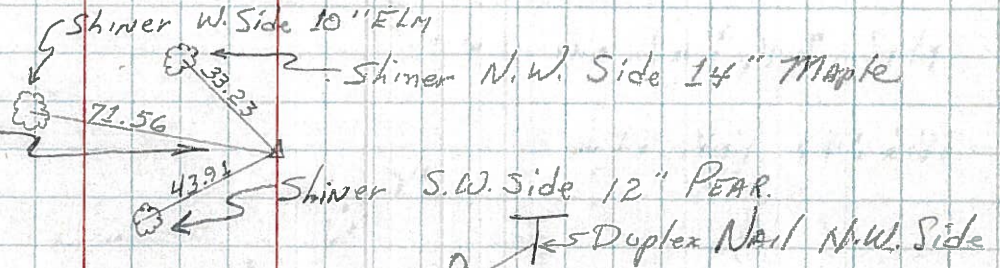
248 27

P.O.T. Sta. 425 + 04.0
INT' x N. RT. 20 AIT.
 $\Delta = 0^{\circ}-00'$



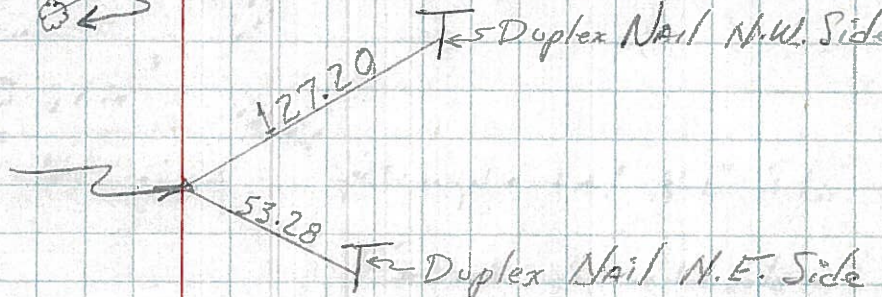
247 (28)

P. I. STA. 398 + 59.98
 $\Delta = 0^{\circ}16'30''$ LT.



246 28A

P. T. STA. 380 + 30.98



244 29

P.C. STA. 375 + 63.53

