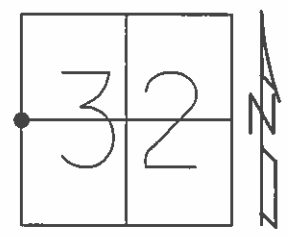


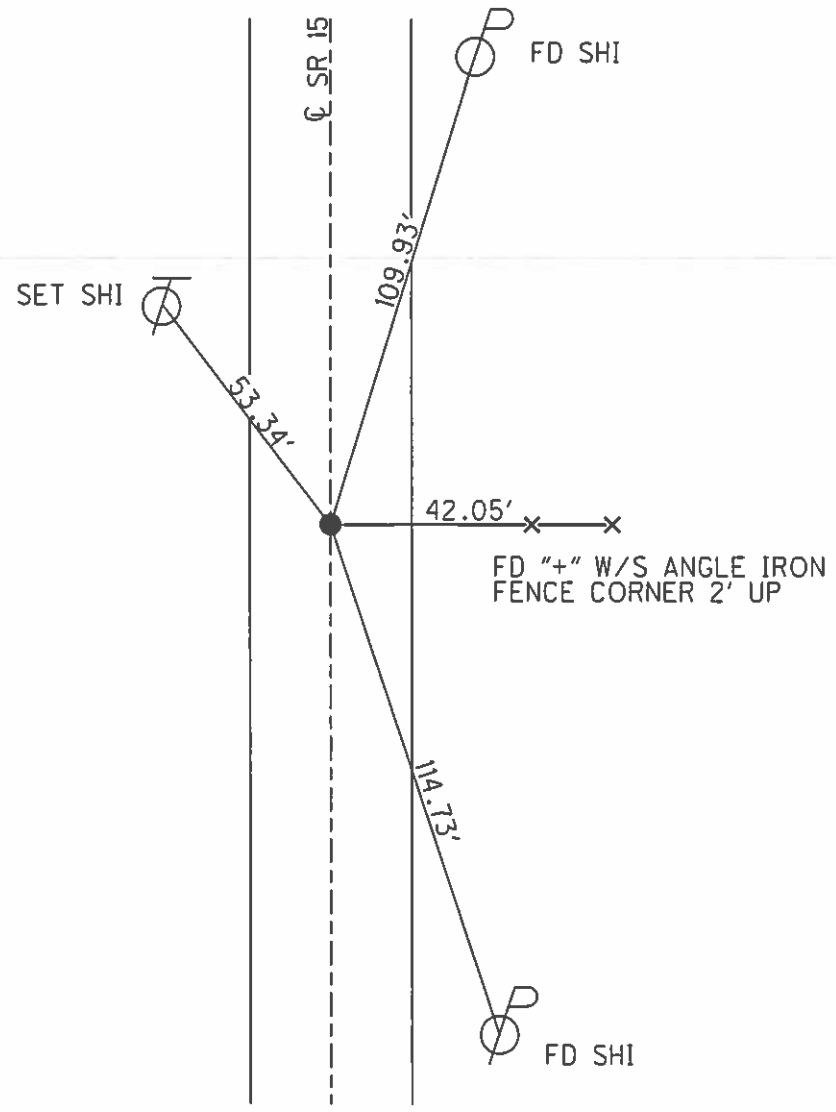
O.D.O.T. DISTRICT 2 SURVEY OFFICE (USE ONLY)

PERSONNEL \_\_\_\_\_ REFERENCE NO. 18 SHEET 31 OF 40  
 NOTES RHOADES DATE 03/29/16 ROUTE SR 15  
 H.C. O'DONNELL WEATHER CLEAR COUNTY WILLIAMS  
 R.C. RHOADES TEMP. 35° TOWNSHIP JEFFERSON  
 \_\_\_\_\_ SECTION 32  
 \_\_\_\_\_ T 7 N R 3 E

TYPE MONUMENT \_\_\_\_\_ SM RR SPK  
 ON SURFACE - ~~BELOW~~ \_\_\_\_\_ ON \_\_\_\_\_  
 LEFT - ☉ PAV'T - RIGHT \_\_\_\_\_  
 \_\_\_\_\_ TO \_\_\_\_\_ EDGE PAVEMENT  
 S.L.M. \_\_\_\_\_ 854+66.93  
 Grid: Northing: 682328.2424 Easting: 1405677.755



SET SM RR SPK  
 10/24/90, IRS  
 FD SM RR SPK  
 GPS, REF18  
 09/24/13, SDC  
 SET MAG/W  
 NEWREF18  
 08/30/16, JFO



# O.D.O.T. DISTRICT 2 SURVEY OFFICE

PERSONNEL

REFERENCE NO. 18

SHEET 9 OF     

NOTES 1. Stone

H.C. D. Curtis

R.C. J. Hauscholder

DATE 2 July 90

WEATHER Warm

TEMP. 79°

ROUTE SR #15

COUNTY Williams

TOWNSHIP Jefferson

SECTION 32

T      R     

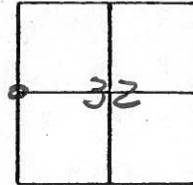
TYPE MONUMENT 5m RR Spk.

ON SURFACE - BELOW Surface

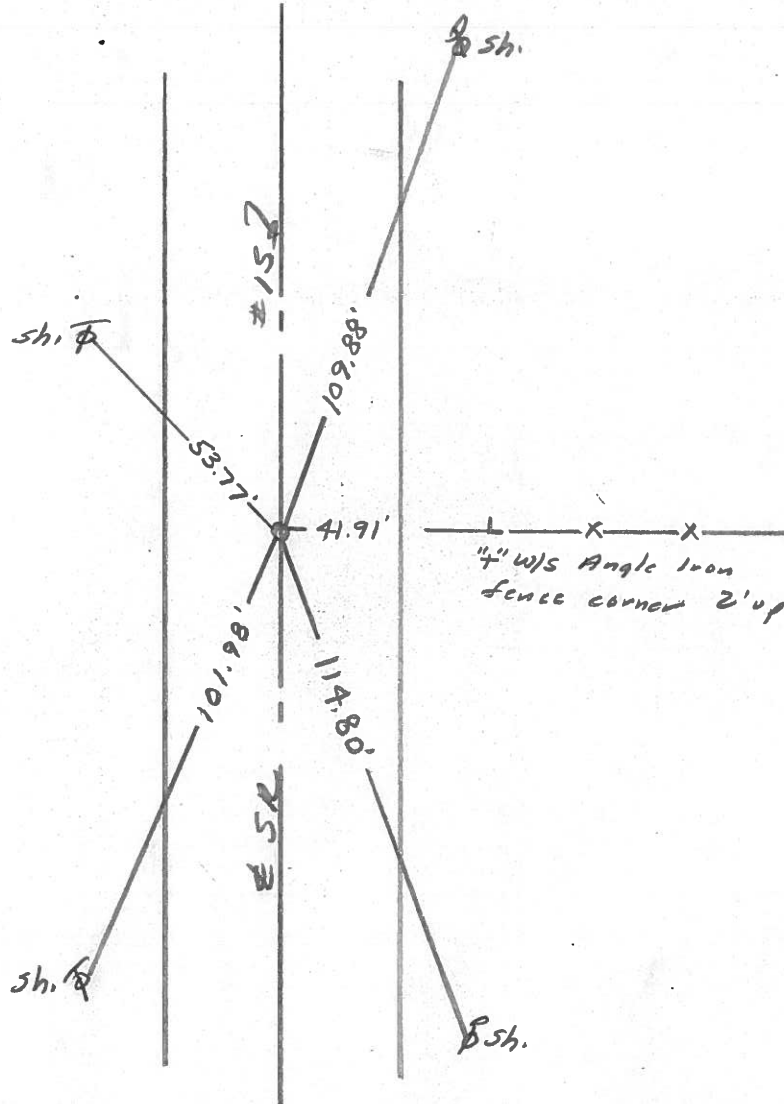
LEFT- & PAV'T. - RIGHT     

TO      EDGE PAVEMENT

S.L.M. 661+07



*Set 5m RR Spk. 10/24/90 IRS*



County WILLIAMS S.R. 15

Date 8-2-79

Township JEFFERSON

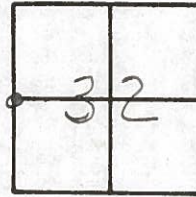
Weather Pt. Cloudy

Section 32

Temp. +70°

T7N, R3E

Personnel BURNSIDE  
SMITH  
BOWERS  
KNAPE  
MEAD



OK 8-6-81 S.W.H.

14

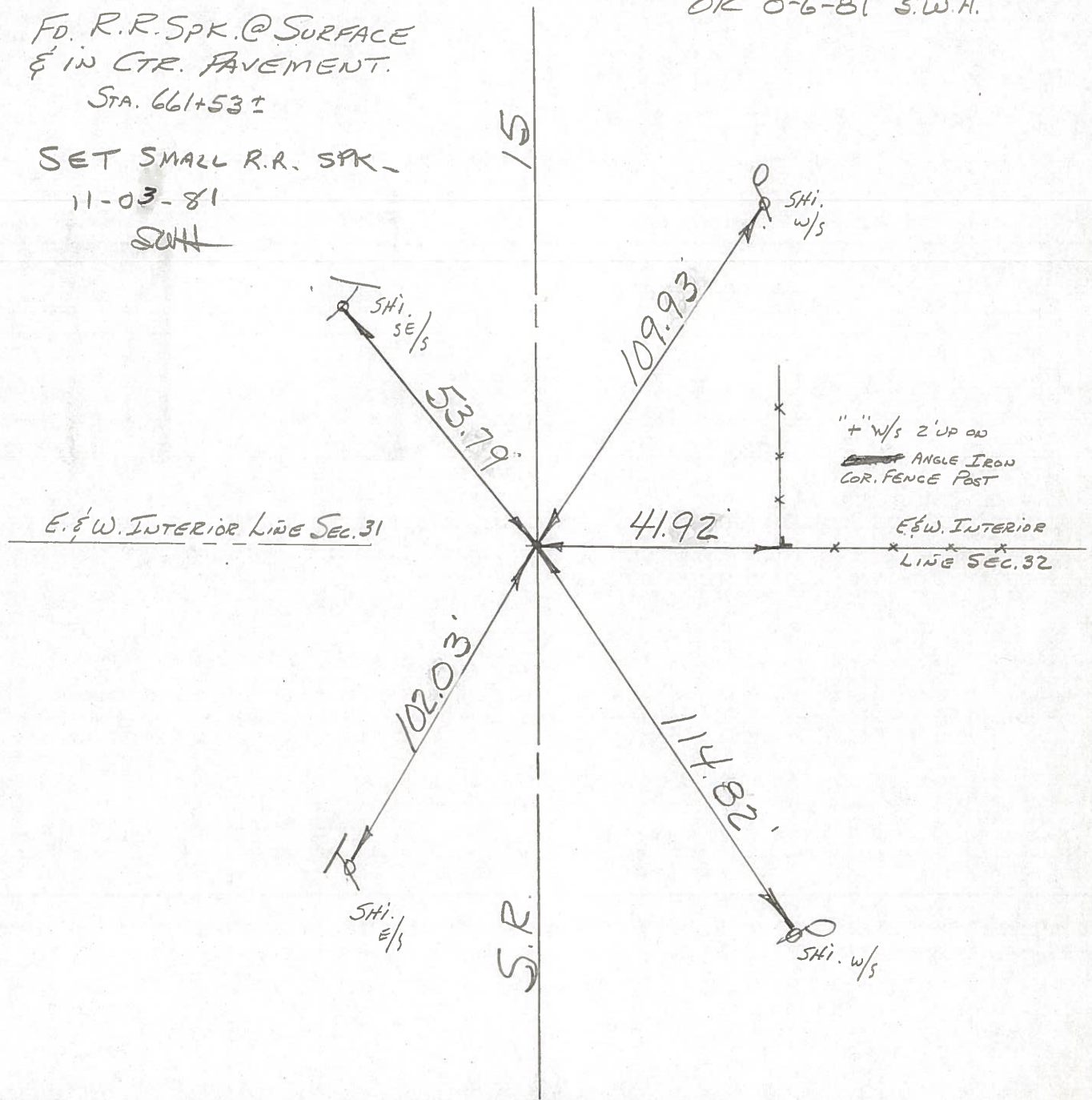
Fd. R.R. Spk. @ SURFACE  
& IN CTR. PAVEMENT.

STA. 661+53±

SET SMALL R.R. SPK.

11-03-81

SWH





PERSONNEL TITLE PERSONNEL TITLE

Beach  
Fessefall  
Wise  
Dierks

COUNTY Wi.

DATE 2-20-56

S. R. 15

WEATHER \_\_\_\_\_

SEC Bryan No. Corp Limit

TEMP. \_\_\_\_\_

# 260

DESCRIPTION

LEFT

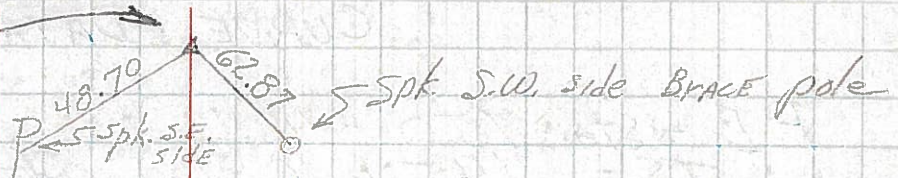
CENTER LINE

RIGHT

JOB NO. \_\_\_\_\_

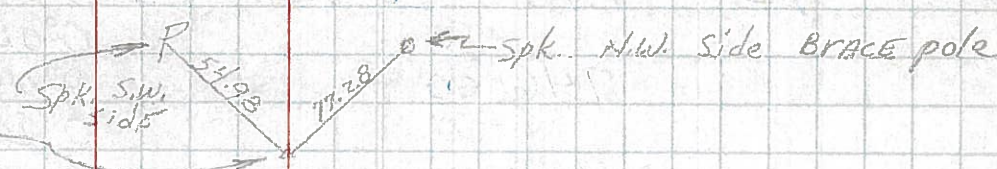
P. T. STA. 691+11.46

**ADD**



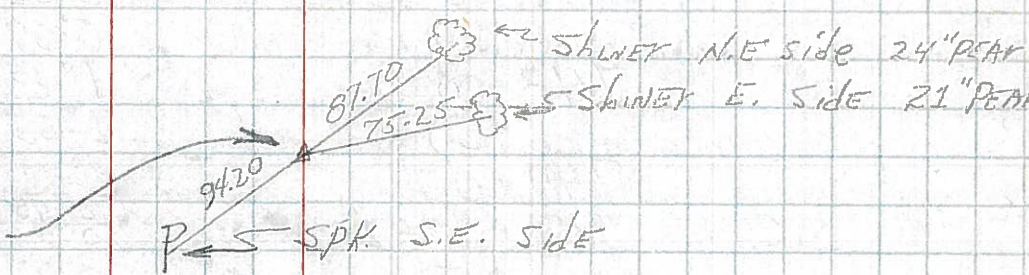
# 258 **ADD**

P. C. STA. 688+11.46



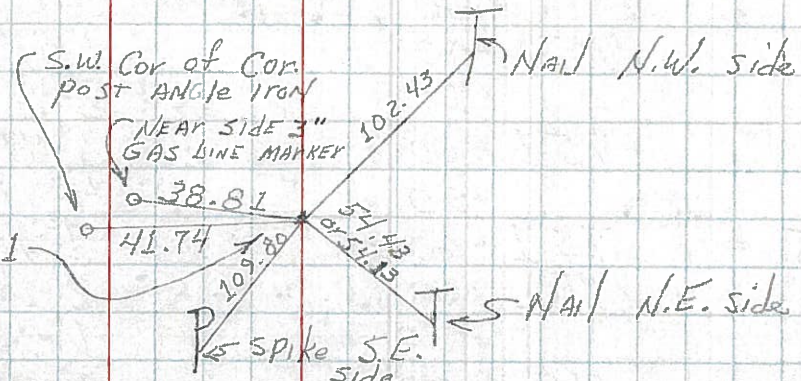
# 259 **17**

P. I. STA. 689+61.46



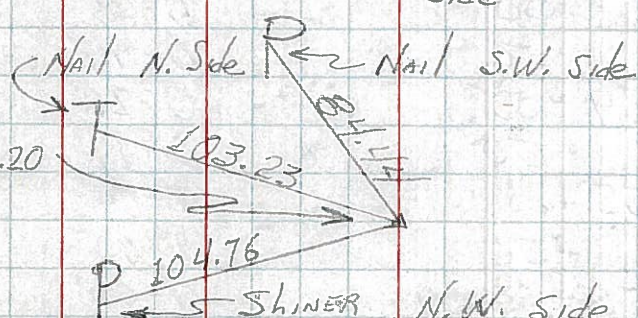
# 257 **(18)**

P. I. STA. 663+22.81  
 $\Delta = 0^\circ 04' 30''$  RT.



# 256 **19**

P. I. STA. 636+69.20  
 $\Delta = 0^\circ 10' 30''$  Lt.



# 255 **20**

P. I. STA 610+34.76  
 $\Delta = 0^\circ 01' 30''$  RT.

