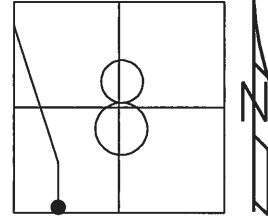


O.D.O.T. DISTRICT 2 SURVEY OFFICE (USE ONLY)

PERSONNEL \_\_\_\_\_ REFERENCE NO. 9 B SHEET 40 OF 40  
 NOTES VAN DUSEN DATE 04/10/92 ROUTE US 127 & SR 15  
 H.C. BARNHISEL WEATHER RAIN COUNTY WILLIAMS  
 R.C. CURTIS TEMP. 45° TOWNSHIP PULASKI  
 \_\_\_\_\_ ROMETO \_\_\_\_\_ SECTION 8-9  
 \_\_\_\_\_ T 6 N R 3 E

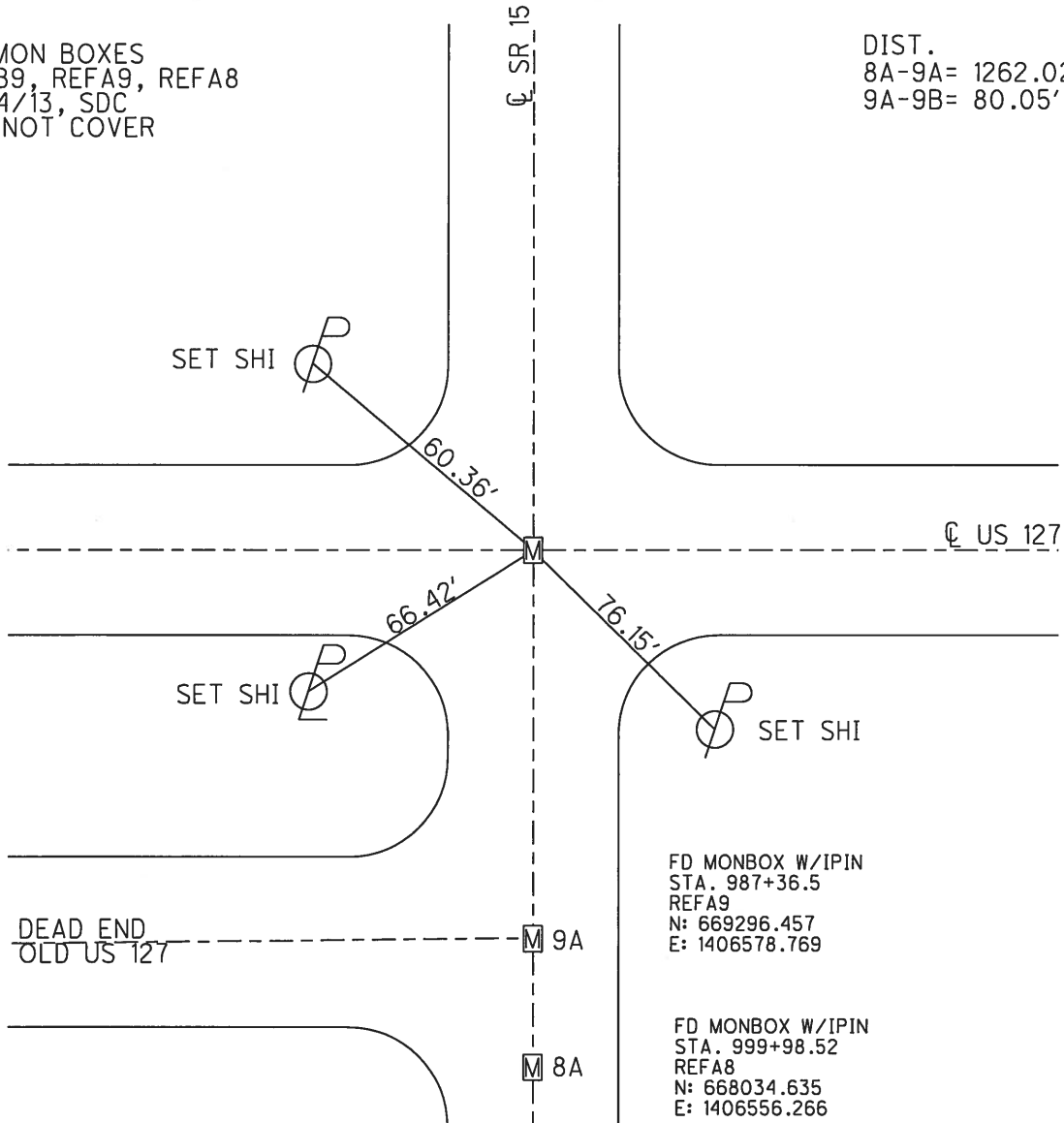
TYPE MONUMENT MON BOX/IRON PIN  
 ON SURFACE - ~~BELOW~~ \_\_\_\_\_ ON \_\_\_\_\_  
~~LEFT~~ - ☉ PAV'T - ~~RIGHT~~ \_\_\_\_\_ ON \_\_\_\_\_  
25.4 TO LT EDGE PAVEMENT  
 S.L.M. 986+56.45

Grid: Northing: 669376.492 Easting: 1406580.076



FD MON BOXES  
 REFB9, REFA9, REFA8  
 9/24/13, SDC  
 DID NOT COVER

DIST.  
 8A-9A= 1262.02'  
 9A-9B= 80.05'



FD MONBOX W/IPIN  
 STA. 987+36.5  
 REFA9  
 N: 669296.457  
 E: 1406578.769

FD MONBOX W/IPIN  
 STA. 999+98.52  
 REFA8  
 N: 668034.635  
 E: 1406556.266

# O.D.O.T. DISTRICT 2 SURVEY OFFICE

PERSONNEL

REFERENCE NO. 13

SHEET      OF     

NOTES VAN DUSEN

H.C. BARNHISEL

DATE 4-10-02

ROUTE US 127 E SR 15

R.C. CURTIS

WEATHER CLOUDY RAIN

COUNTY WILLIAMS

ROMETO P

TEMP. +45° F

TOWNSHIP PULASKI

SECTION 8-9

T6 N R 3 E

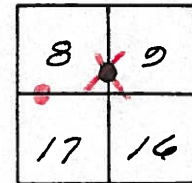
TYPE MONUMENT Mon. Box w/ IRON PIN

ON SURFACE - ~~BELW~~ YES

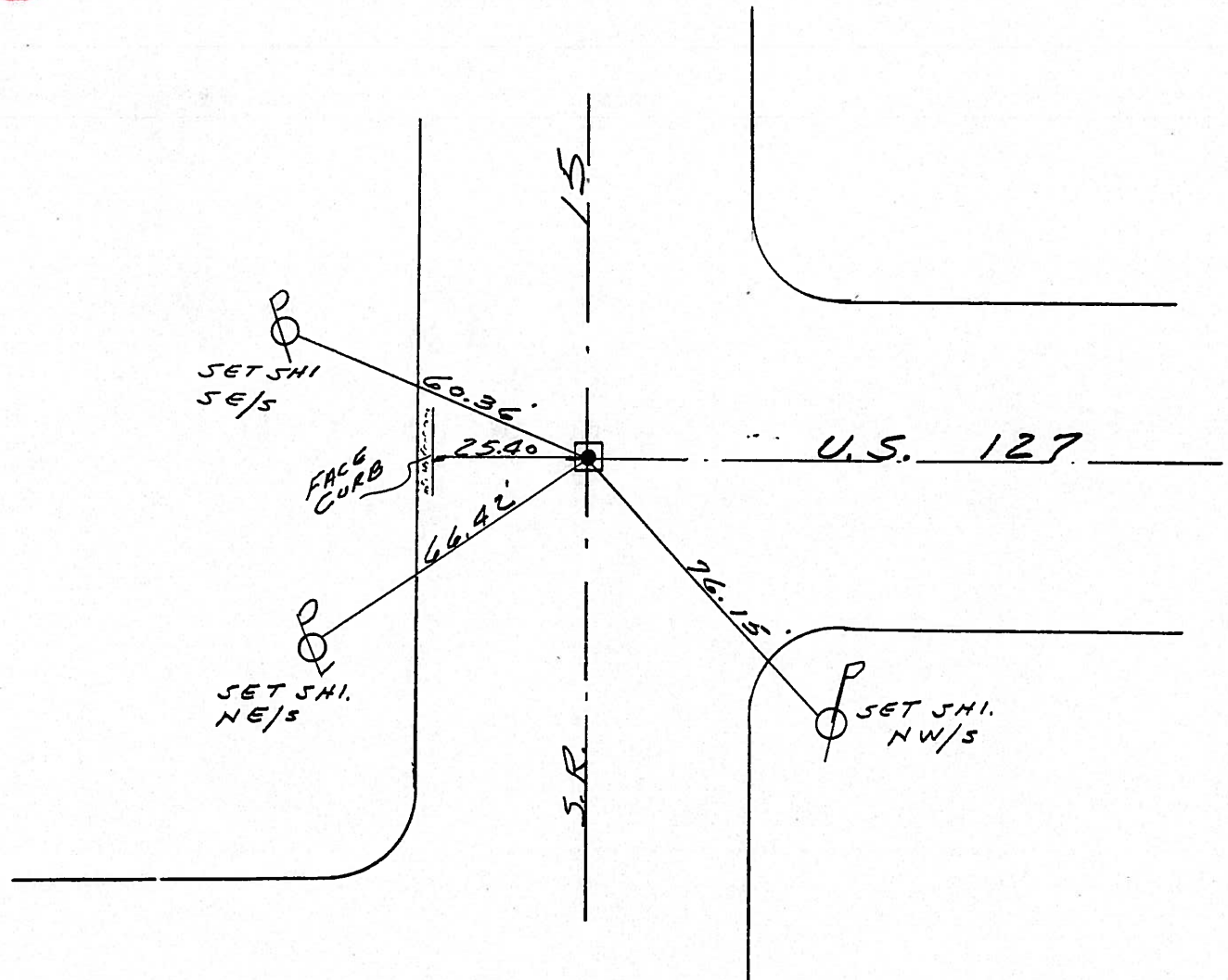
~~LEFT - & PAV'T. - RIGHT~~ YES

25.4 TO LT. EDGE PAVEMENT

S.L.M. 215 + 33



9-B



PERSONNEL	TITLE	PERSONNEL	TITLE
Beach			
Passafall			
Wise			
Dierks.			

COUNTY Wi. DATE 2-20-56  
 S. R. 15 WEATHER \_\_\_\_\_  
 SEC. From Rt. # 204. to Bryan N. Corp. Limit TEMP. \_\_\_\_\_

DESCRIPTION \_\_\_\_\_ LEFT \_\_\_\_\_ CENTER LINE \_\_\_\_\_ RIGHT \_\_\_\_\_ JOB NO. \_\_\_\_\_

