

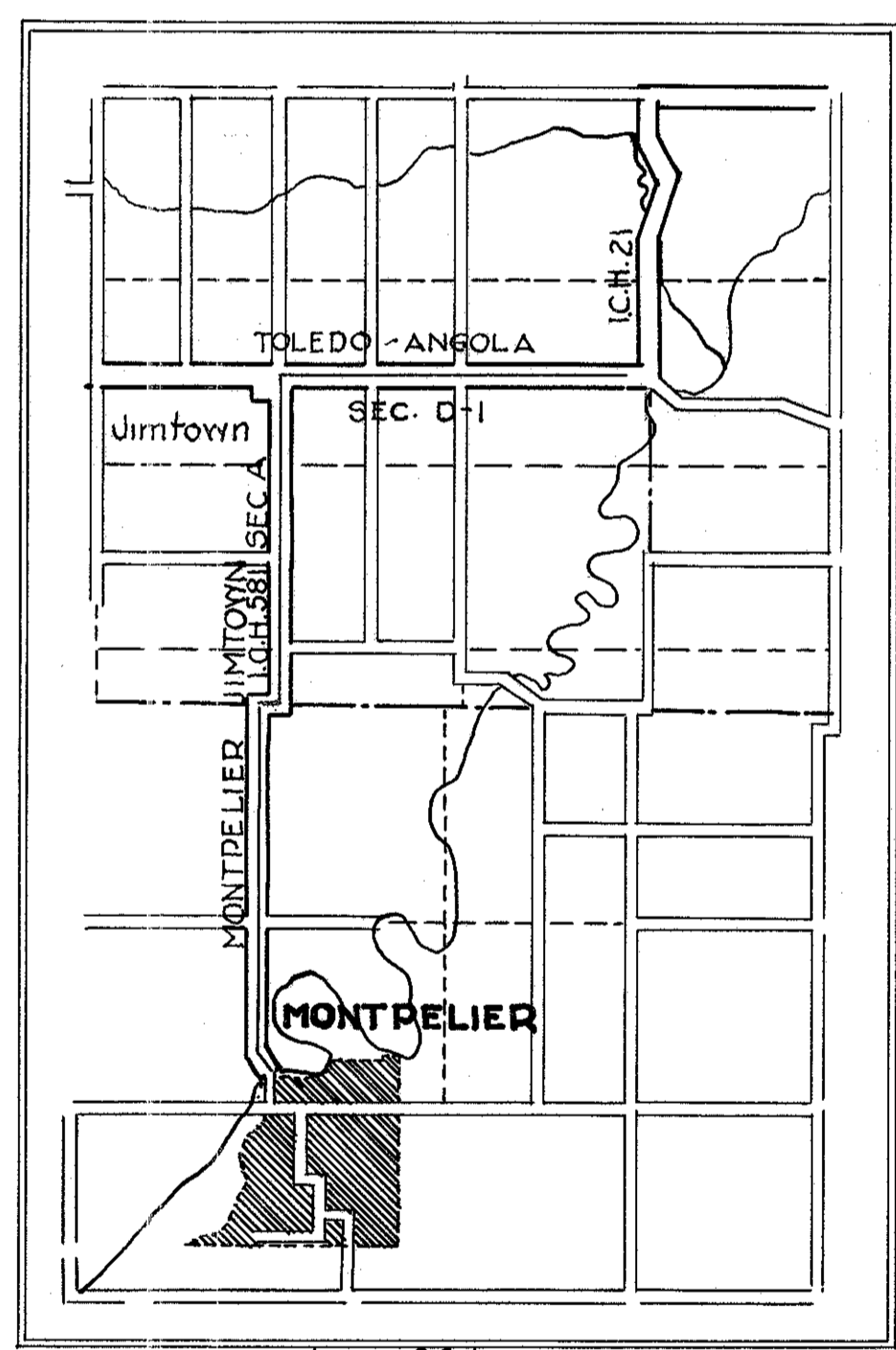
STATE OF OHIO  
 DEPARTMENT OF HIGHWAYS  
 RIGHT OF WAY PLANS  
 TOLEDO-ANGOLA & MONTPELIER-JIMTOWN  
 S.H. 21 SEC. D-1  
 S.H. 581 SEC. A  
 WILLIAMS COUNTY  
 BRIDGEWATER & SUPERIOR TWP.

R/W PLANS  
 I.C.H. 21 SEC. D-1 & I.C.H. 581 SEC. A  
 WILLIAMS CO.

*R/W checked  
 easement obtained as shown  
 JH  
 3/29/44*

Scanned July 1997

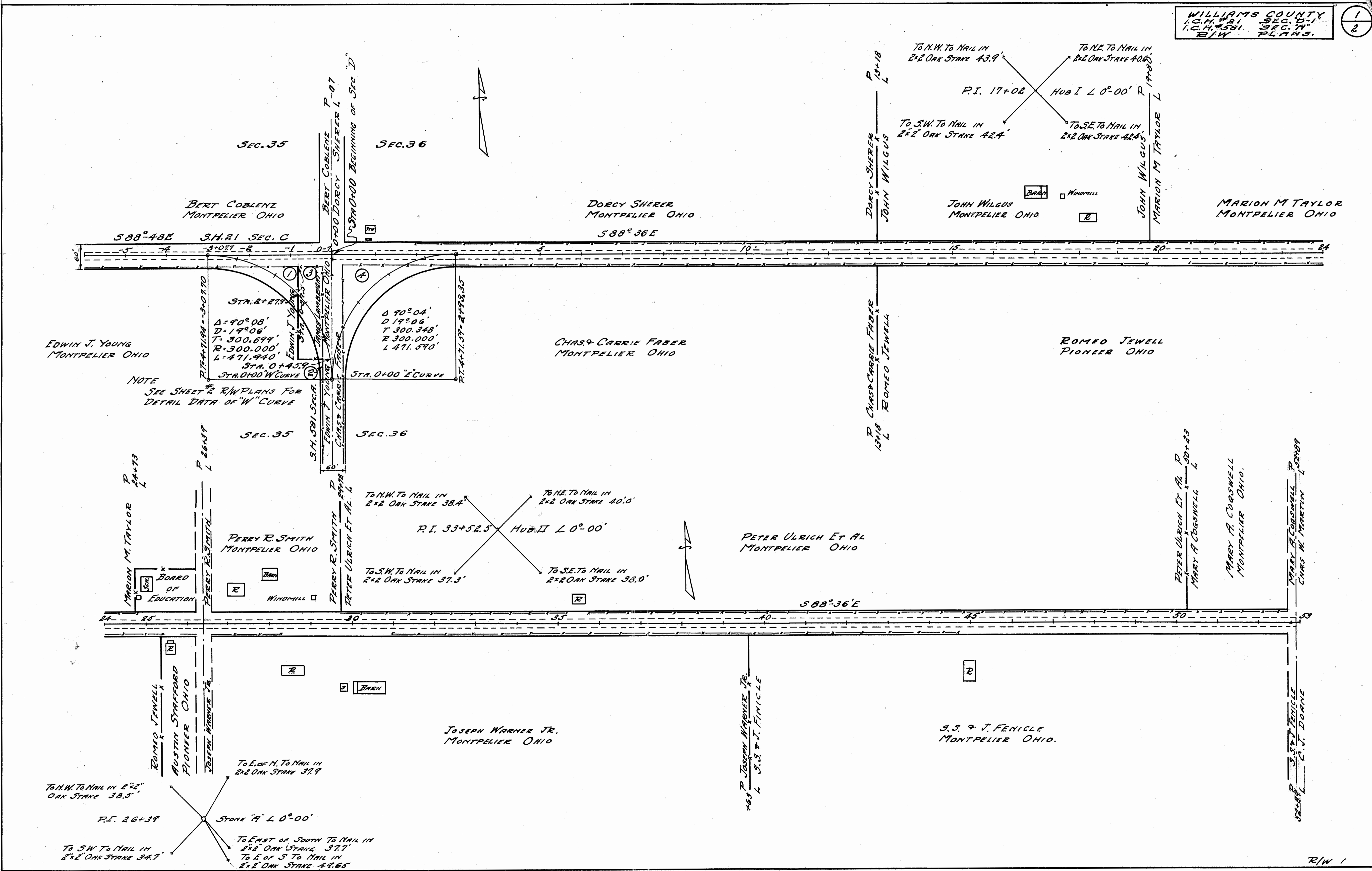
LOCATION PLAN



IMPROVED ROADS   
 PROPOSED IMPROVEMENT 

R-2020 4 A-3

Scanned July 1997



NOTE  
SEE SHEET R/W PLANS FOR  
DETAIL DATA OF "W" CURVE

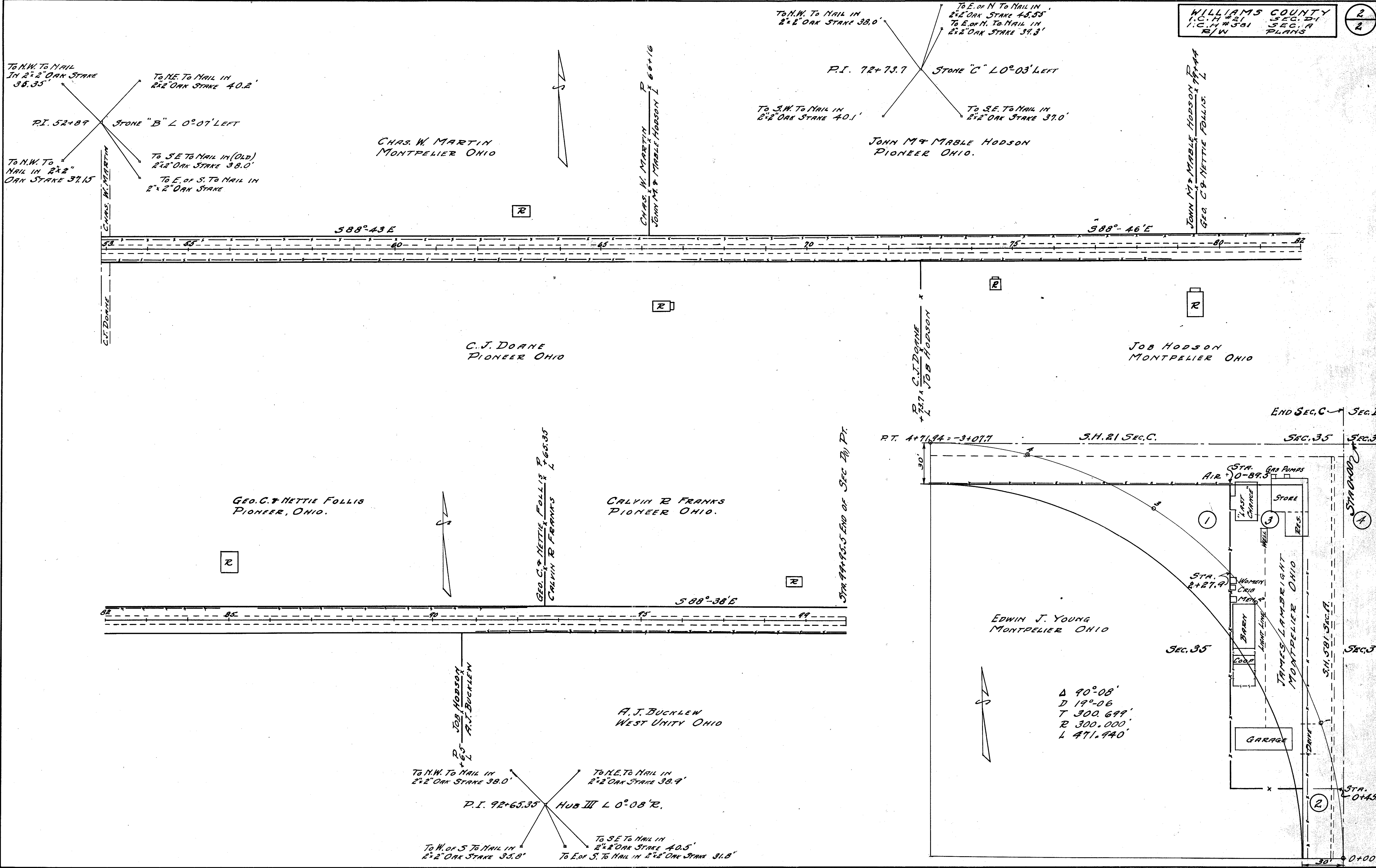
Δ 90°08'  
D 19°06'  
T 300.699'  
R 300.000'  
L 471.940'  
STA. 0+45.9  
STA. 0+00 "W" CURVE

Δ 90°04'  
D 19°06'  
T 300.348'  
R 300.000'  
L 471.590'  
STA. 0+00 "E" CURVE

To N.W. To Nail in 2"x2" OAK STAKE 38.5'  
To S.W. To Nail in 2"x2" OAK STAKE 34.7'  
To E. of H. To Nail in 2"x2" OAK STAKE 37.9'  
To East of South To Nail in 2"x2" OAK STAKE 37.7'  
To E. of S To Nail in 2"x2" OAK STAKE 44.65'  
STONE "A" L 0°-00'

To N.W. To Nail in 2"x2" OAK STAKE 38.4'  
To N.E. To Nail in 2"x2" OAK STAKE 40.0'  
To S.W. To Nail in 2"x2" OAK STAKE 37.3'  
To S.E. To Nail in 2"x2" OAK STAKE 38.0'  
P.I. 33+52.5 HUB II L 0°-00'

To N.W. To Nail in 2"x2" OAK STAKE 43.9'  
To N.E. To Nail in 2"x2" OAK STAKE 40.8'  
To S.W. To Nail in 2"x2" OAK STAKE 42.4'  
To S.E. To Nail in 2"x2" OAK STAKE 42.4'  
P.I. 17+02 HUB I L 0°-00'



Scanned  
July 14, 2017