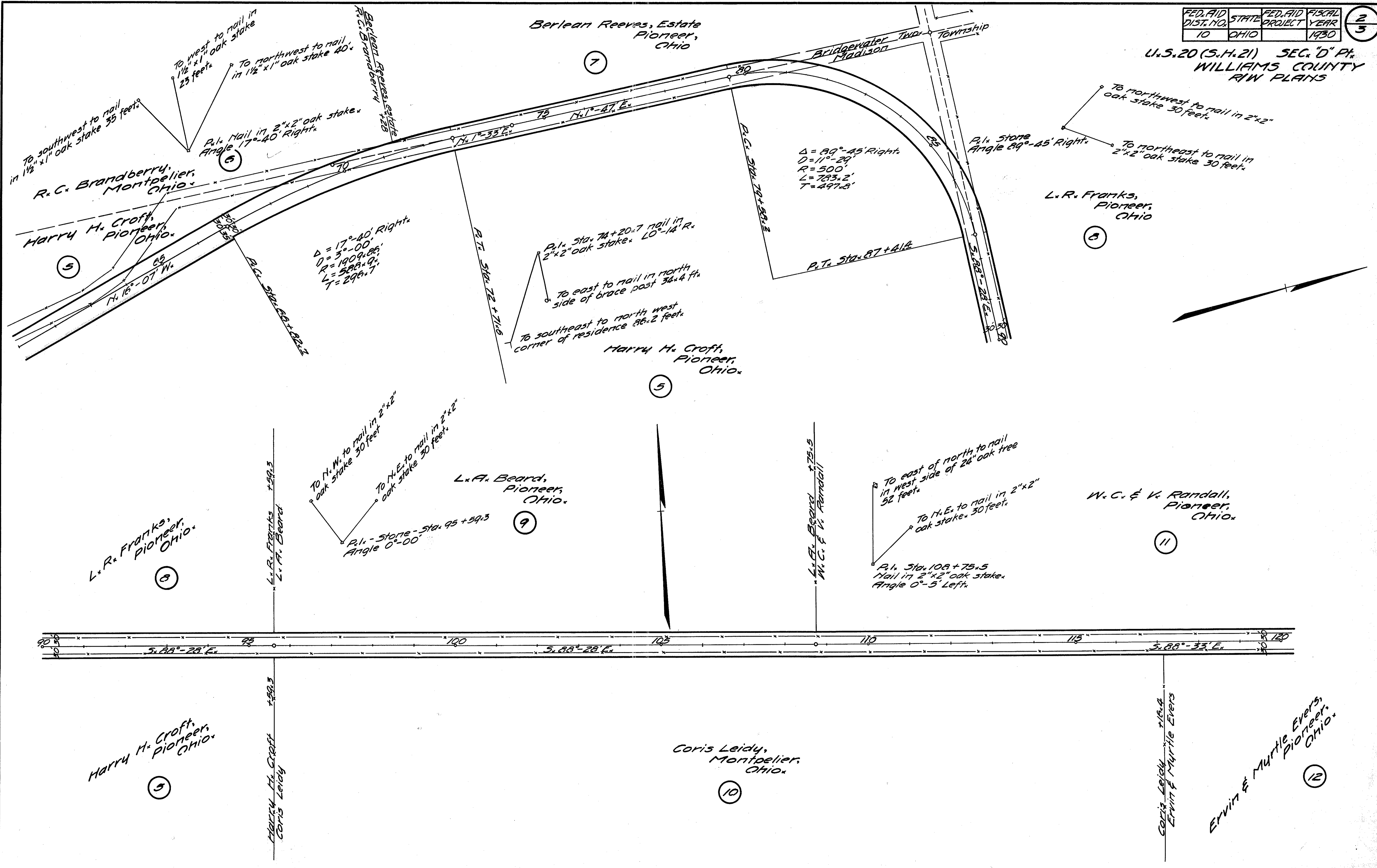


FED. AID DIST. NO.	STATE	FED. AID PROJECT	FISCAL YEAR
10	OHIO		1930

2
3

U.S. 20 (S.H. 21) SEC. "D" Pt. WILLIAMS COUNTY R/W PLANS



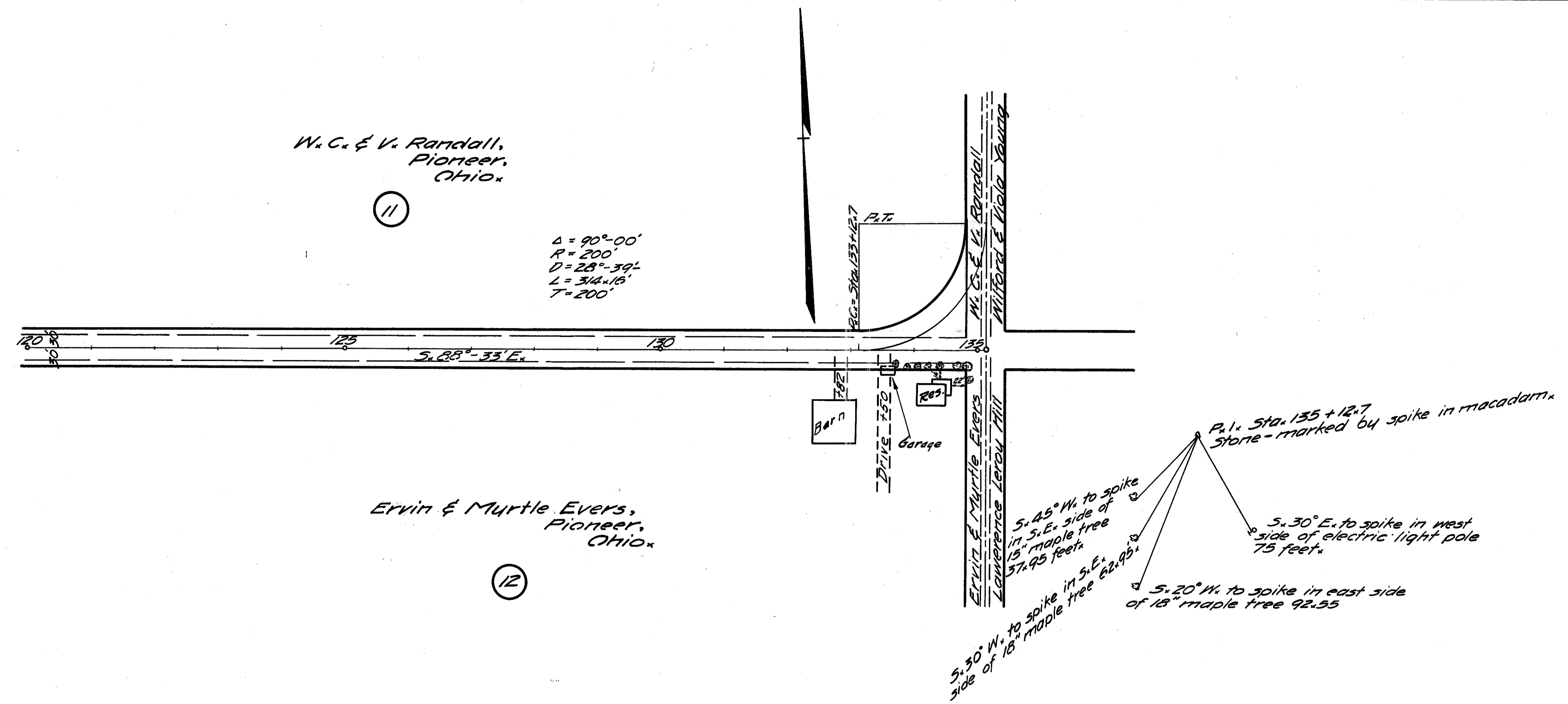
Drawn July 1997

Continued
July 1947

FED. AID DIST. NO.	STATE	FED. AID PROJECT	FISCAL YEAR
10	OHIO		1950

3
3

U.S. 20 (S.H. 21) SEC. 'D' Pt.
WILLIAMS COUNTY,
R/W PLANS



W. C. & V. Randall,
Pioneer,
Ohio.

(11)

$\Delta = 90^{\circ} - 00'$
 $R = 200'$
 $D = 28^{\circ} - 39'$
 $L = 34^{\circ} - 16'$
 $T = 200'$

Ervin & Murtle Evers,
Pioneer,
Ohio.

(12)

P.I. Sta. 135 + 12.7
Stone - marked by spike in macadam.

$S. 45^{\circ} W.$ to spike
in S.E. side of
15" maple tree
37.95 feet.

$S. 30^{\circ} E.$ to spike in west
side of electric light pole
75 feet.

$S. 20^{\circ} W.$ to spike in east side
of 18" maple tree 92.55

$S. 30^{\circ} W.$ to spike in S.E.
side of 18" maple tree 62.95