

WILLIAMS COUNTY		1 2
S.H. No. 21 SEC. D2 (PT.)		
R/W PLAN		
DATE Feb. 1938	DRAWN BY R.F.F.	
REVISED 1/10/38		
LENGTH OF PROJECT 1.065 MI.		

R/W OK. as shown
easements of lands shown
F.J.F.
 3/29/44 ✓

BEGINNING OF PROJECT
 386-D2 REOPENING
 & RELOCATION PT. 1
 STA. 42+84.59

SEC. 31
 ①
 CALVIN R. FRANKS
 Montpelier, Ohio.

③
 FRED P. HANNA
 Pioneer, Ohio.

②
 EFFIE KUNKLE
 Frankfort, Ind.

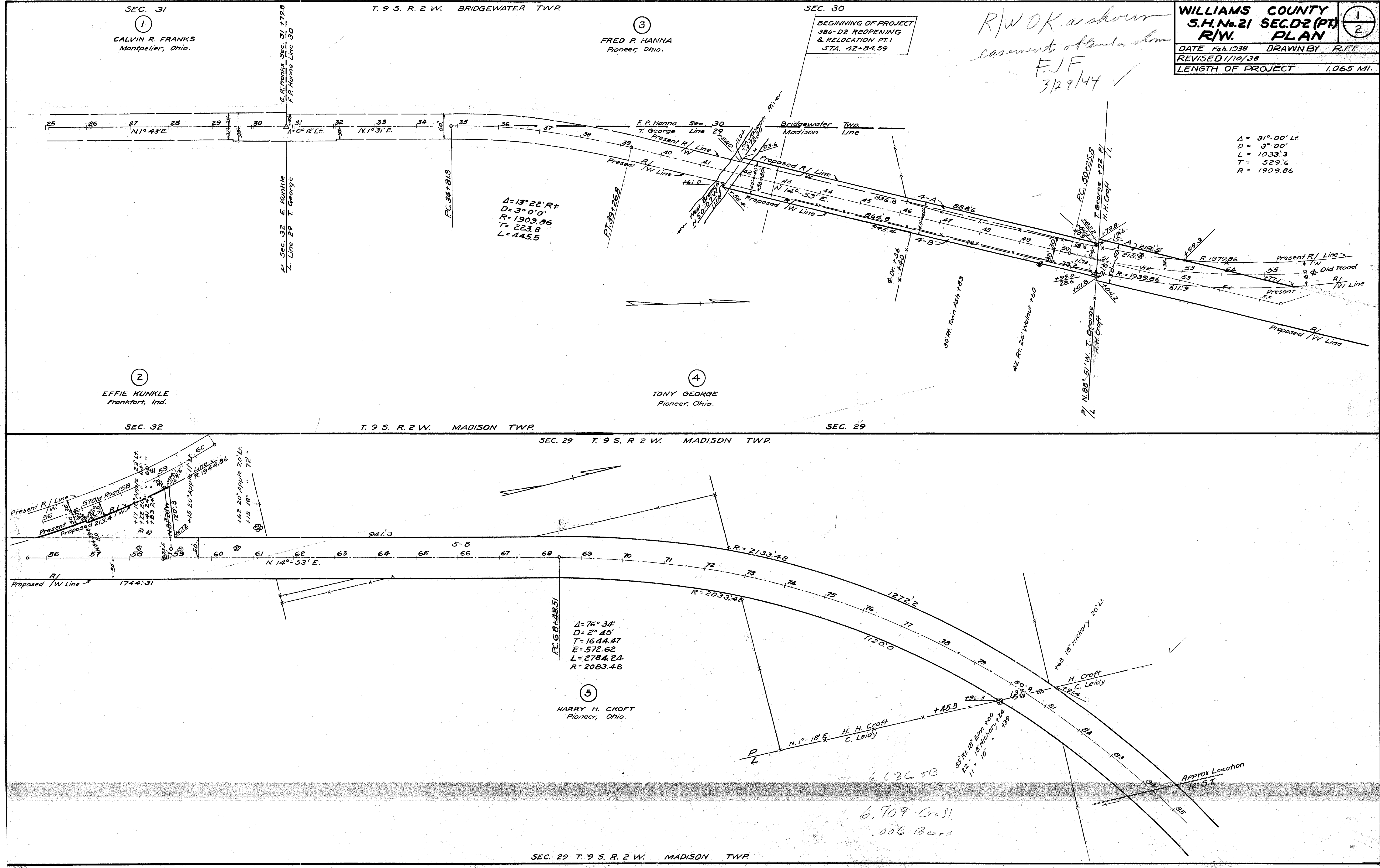
④
 TONY GEORGE
 Pioneer, Ohio.

⑤
 HARRY H. CROFT
 Pioneer, Ohio.

A = 31° 00' Lt
 D = 9° 00'
 L = 1033.3
 T = 529.6
 R = 1909.86

A = 13° 22' Rt
 D = 3° 0' 0"
 R = 1909.86
 T = 223.8
 L = 445.5

A = 76° 34'
 D = 2° 45'
 T = 1644.47
 E = 572.62
 L = 2784.24
 R = 2083.48



March 1944

R 7020 47 A-1

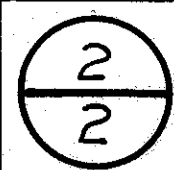
SEC. 20 T. 9 S. R. 2 W. MADISON TWP.

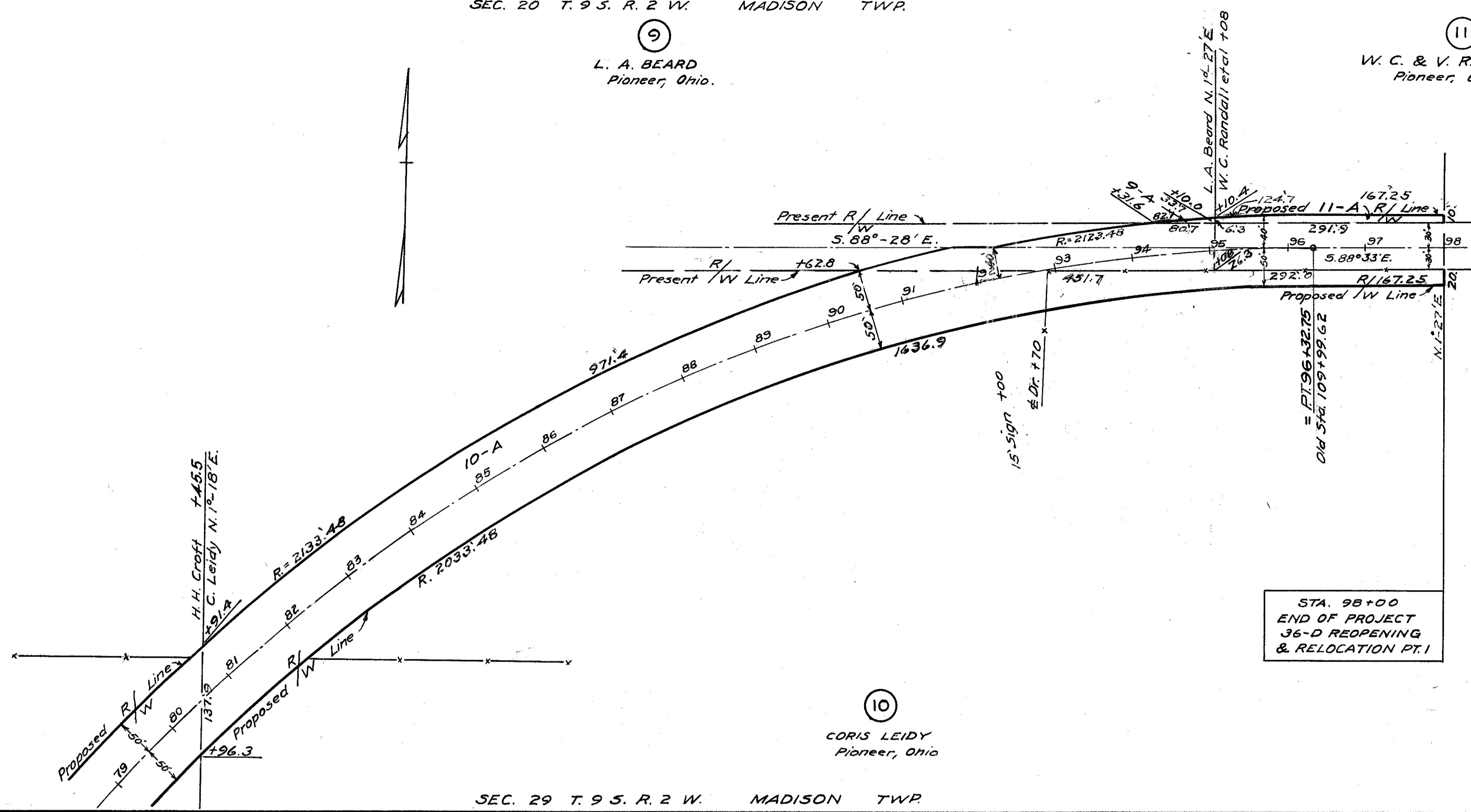
9

L. A. BEARD
Pioneer, Ohio.

11

W. C. & V. RANDALL
Pioneer, Ohio

WILLIAMS COUNTY		
S.H. No. 21	SEC. D-2 (PT)	
R/W.	PLAN	
DATE Feb. 1938	DRAWN BY RFF	
REVISED 1/10/38		
LENGTH OF PROJECT 1.065 MI.		



STA. 98+00
END OF PROJECT
36-D REOPENING
& RELOCATION PT. 1

SEC. 29 T. 9 S. R. 2 W. MADISON TWP.

10

CORIS LEIDY
Pioneer, Ohio

Revised Utility 1/17