

27070

FED. AID DIST. NO.	STATE	FED. AID PROJECT	FISCAL YEAR	1/43
10	OHIO	386-C	1929	

U.S. 20 (I.C.H. 21) SEC. O & "ALVORDTON" WILLIAMS COUNTY

STATE OF OHIO
DEPARTMENT OF HIGHWAYS
TOLEDO-ANGOLA ROAD
U.S. 20 (I.C.H. 21) SEC. O "ALVORDTON" PET. NO. 6781
WILLIAMS COUNTY
MADISON & MILLCREEK TOWNSHIPS JULY 1929

Recd Apr 17/30

The standard Specifications of the STATE OF OHIO, Department of Highways, in force on date of contract will govern this improvement.

I hereby approve these plans and declare that the making of this improvement will require the closing to traffic of the highway and that detours will be provided as shown on the plan and estimates.

Approved: Alfred L. Ondycke
Date: 12-3-1929 Resident District Deputy Director.

Approved: John G. Yalwer
Date: 12-9-29 Resident Division Deputy Director.

Approved: Robert O. Deighten
Date: 2/14/30 Chief Engineer Bureau of Construction.

Approved: _____
Date: _____ Chief Engineer Bureau of Maintenance.

Approved: J.P. Butkey
Date: 2-17-30 Chief Engineer Bureau of Bridges.

Approved: John R. ...
Date: 2-17-30 First Asst. Director & Chief Engineer.

Approved: Robert ...
Date: 2-17-30 Director of Highways.

Recommended for Approval: _____
Date: _____ District Engineer Bureau of Public Roads.

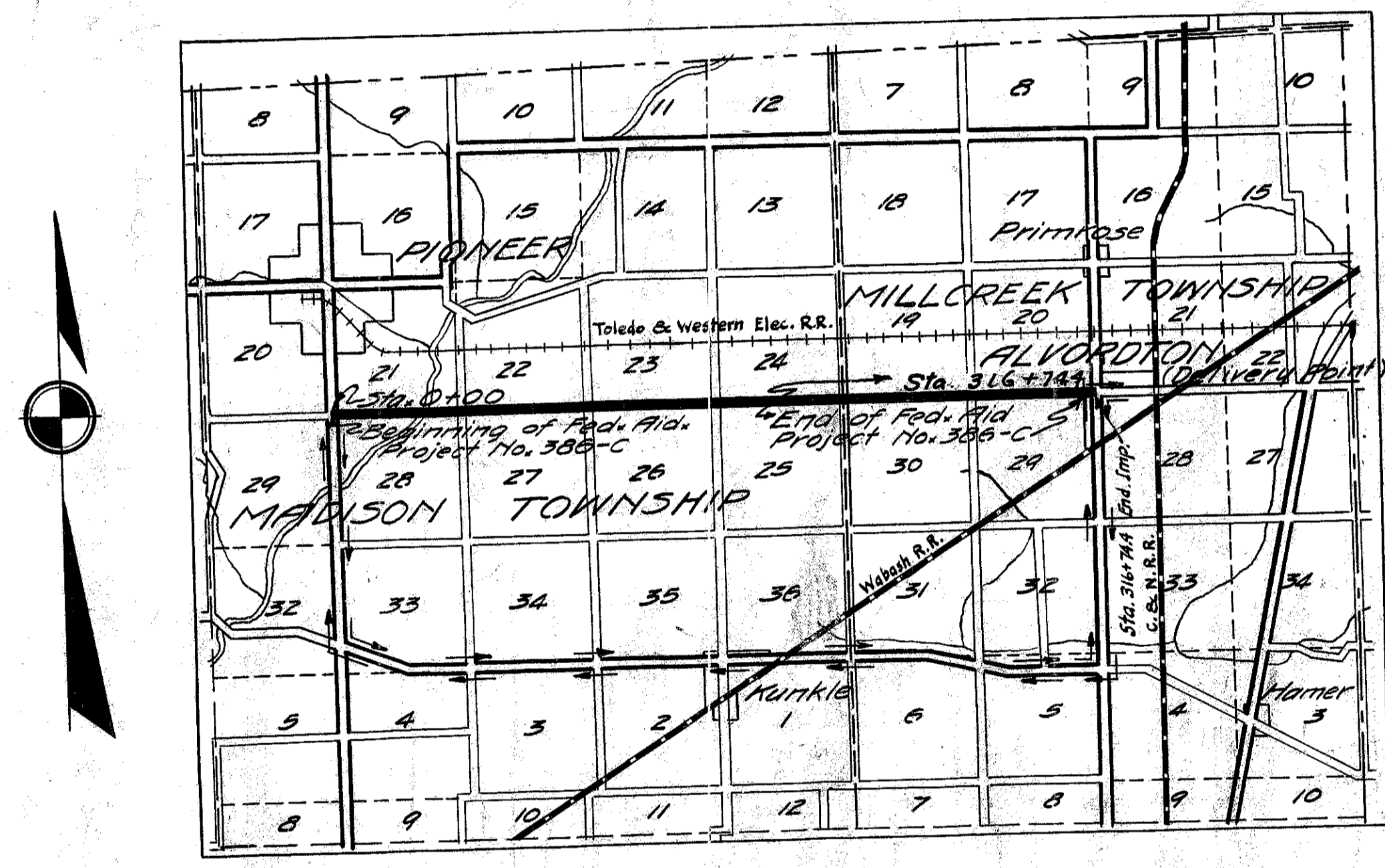
Recommended for Approval: _____
Date: _____ Chief Engineer Bureau of Public Roads.

Approved: _____
Date: _____ Chief of Bureau.



CONVENTIONAL SIGNS

State Line	-----
County Line	-----
Township Line	-----
Section Line	-----
Property Line	-----
Center Line	-----
City or Village Line	-----
Telephone or Telegraph	T T T T
Steam Railroad	-----
Electric Line	-----
Guard Rail	-----
Drain Pipe - new	-----
Drain Pipe - old	-----



LOCATION PLAN
SCALE OF MILES
0 1 2

PORTION TO BE IMPROVED
DETOURS SHOWN THUS
IMPROVED ROADS

SCALES

PLAN	1"=100'
PROFILE VERTICAL	1"=10'
PROFILE HORIZONTAL	1"=100'
CROSS SECTION	1"=5'

INDEX OF SHEETS

TITLE PAGE	P. 1
TYPICAL CROSS SECTION	2
PLANS AND PROFILE	3-13
CROSS SECTIONS	14-32
CURVE DATA	33
STRUCTURAL PLANS	34-40
SUMMARY SHEETS	42-43
SUBBASE TEST SHEET	41

SUPPLEMENTAL PRINTS OF STRUCTURAL STANDARDS DRAWINGS NO. 300, 305, AS 2430 & SC. 100-30-2. ALSO DRAWINGS NO. 95, 96, 98 & 100.

We, the Commissioners of Williams County, hereby approve these plans and certify that the right-of-way 60 feet wide is available for the construction, maintenance and repair of the above highway.

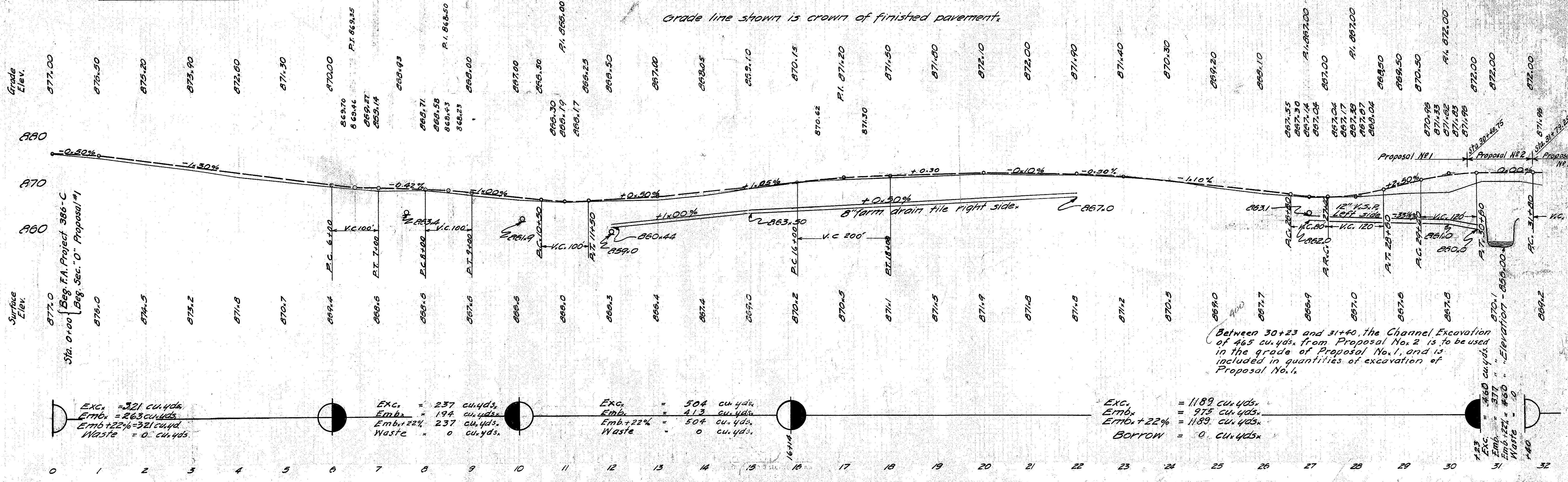
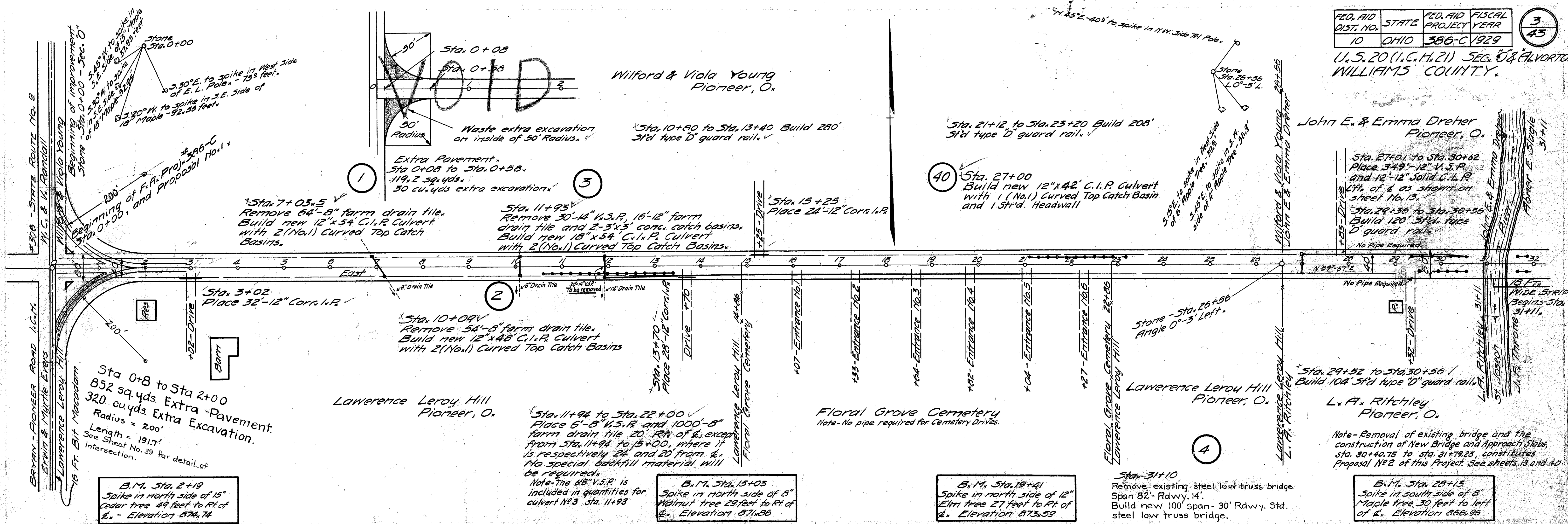
S. S. Townsend
John G. Yalwer
B. H. Taylor

Date: 12-2-1929 County Commissioners.

FED. AID DIST. NO.	STATE	FED. AID PROJECT	FISCAL YEAR
10	OHIO	386-C	1929

3/43

U.S. 20 (I.C.H. 21) SEC. 0 & ALVORTON WILLIAMS COUNTY.



B.M. Sta. 2+19
Spike in north side of 15' Cedar tree 49 feet to Rt of 6. Elevation 874.74

B.M. Sta. 15+05
Spike in north side of 8' Walnut tree 28 feet to Rt of 6. Elevation 871.86

B.M. Sta. 19+41
Spike in north side of 12' Elm tree 27 feet to Rt of 6. Elevation 873.59

B.M. Sta. 28+15
Spike in south side of 8' Maple tree 30 feet to left of 6. Elevation 866.96

Exc. = 321 cu. yds.
Emb. = 263 cu. yds.
Emb + 22% = 321 cu. yds.
Waste = 0 cu. yds.

Exc. = 237 cu. yds.
Emb. = 194 cu. yds.
Emb + 22% = 237 cu. yds.
Waste = 0 cu. yds.

Exc. = 504 cu. yds.
Emb. = 413 cu. yds.
Emb + 22% = 504 cu. yds.
Waste = 0 cu. yds.

Exc. = 1189 cu. yds.
Emb. = 915 cu. yds.
Emb + 22% = 1189 cu. yds.
BORROW = 0 cu. yds.

Between 30+23 and 31+40, the Channel Excavation of 465 cu. yds. from Proposal No. 2 is to be used in the grade of Proposal No. 1, and is included in quantities of excavation of Proposal No. 1.

FED. AID DIST. NO.	STATE	FED. AID PROJECT	FISCAL YEAR
10	OHIO	388-C	1929

4
43

U.S. 20 (U.G.H. 21) SEC. 0 & ALVORDTON
WILLIAMS COUNTY

Abner E. Slagle, Estate
Ada Slagle Repp, Heir.
1027 E. Ft. Wayne St.
Warsaw, Indiana.

Mary J. Throne
Pioneer, O.

Sta. 59+50
Place 28'-10" Corr. l.P.

B. J. Rich et al.
Gridley,
Illinois.

Sta. 31+58 to Sta. 36+18
12"-18" Solid C.I.P. & 44"-18" V.S.P.
Left of & as shown on sheet No. 13.

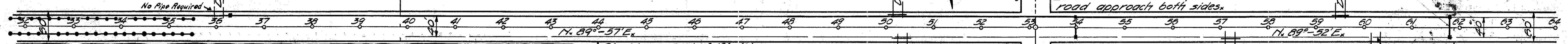
Sta. 31+64 to Sta. 35+56 Build 392'
5th. type D guard rail.

Sta. 36+19
R(10x1) Curved Top Catch Basin

Sta. 50+25
Place 28'-12" Corr. l.P.

Sta. 53+12.2
20 tons No. 2 stone for
road approach both sides.

Sta. 61+80
Remove 48'-6" farm drain tile
Build new 12"x44" C.I.P. Culvert
with 2 (No. 1) Curved Top Catch Basins.



Sta. 31+40 to Sta. 43+54
Open Ditch to right of &.

Sta. 43+00 to 43+60 Right
Place 28.7 sq. yds. rip-rap
average thickness, 12" north
side of slope 4' average height.

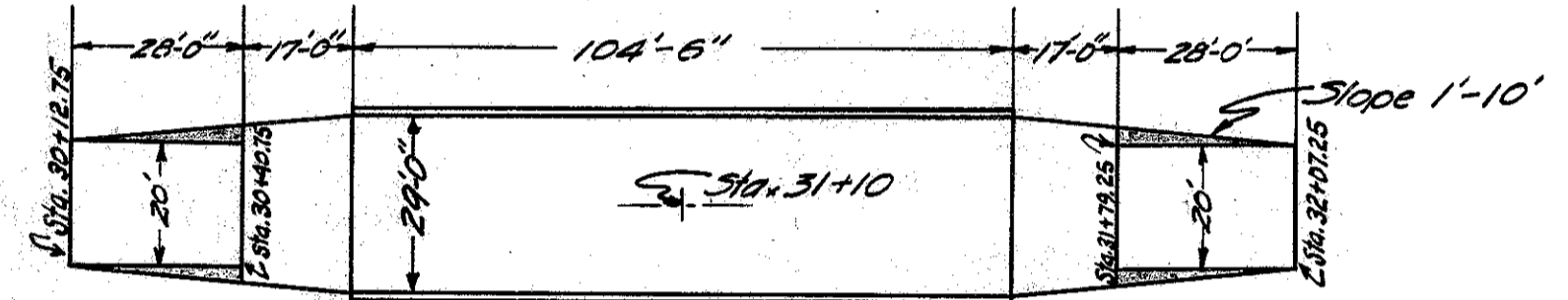
Sta. 36+20 to Sta. 53+99
Place 17.78-12" V.S.P.
22' to left of &. No special
backfill material will be
required. 60 lin. ft. of the
above quantity of V.S.P. from
Sta. 52+82 to Sta. 53+42 shall be
encased in concrete.
6.48 cu. yds. 1-8 mix concrete.

Sta. 54+00
Build new 12"x44" C.I.P.
Culvert with 2 (No. 1)
Curved Top Catch Basins.

Sta. 57+21
Place 20'-12"
Corr. l.P.

Sta. 54+01 to Sta. 61+79
Place 766'-8" farm drain tile and
(12"-8" V.S.P. included with culvert
estimate). 22' Left of &. No special
backfill material will be required.

Sta. 31+64 to Sta. 35+56 Build 392'
5th. Type D guard rail.



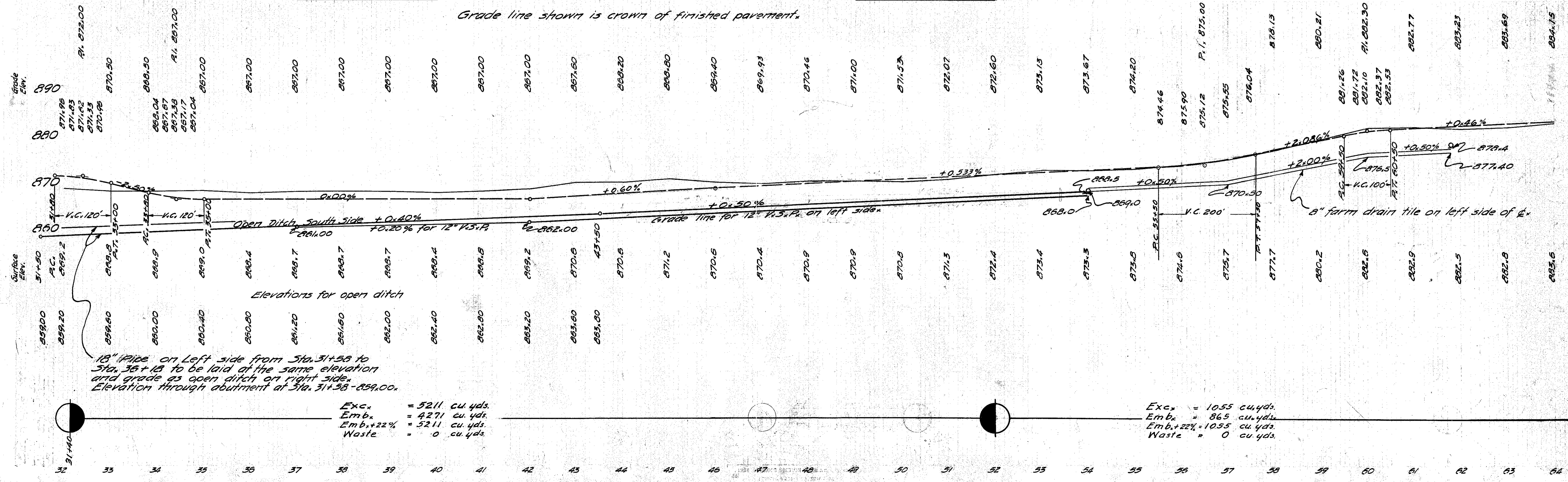
PLAN SHOWING WIDENING AT APPROACHES.

Conc. wearing surface on bridge 314 sq. yds.
Extra pavement 174.4 sq. yds.
Deduct 138.5 lin. ft. for pavement.
20' Pavement ends sta. 30+44.75
20' Pavement begins sta. 31+79.25
See sheets 13 and 40 for further details.

B.M. Sta. 39+10
Spike in north side of 10"
Hickory tree 126 feet to
Rt. of &. Elevation 886.57

B.M. Sta. 52+77
Spike in north side of 12"
Apple tree 37 feet to right
of &. Elevation 874.17

Grade line shown is crown of finished pavement.



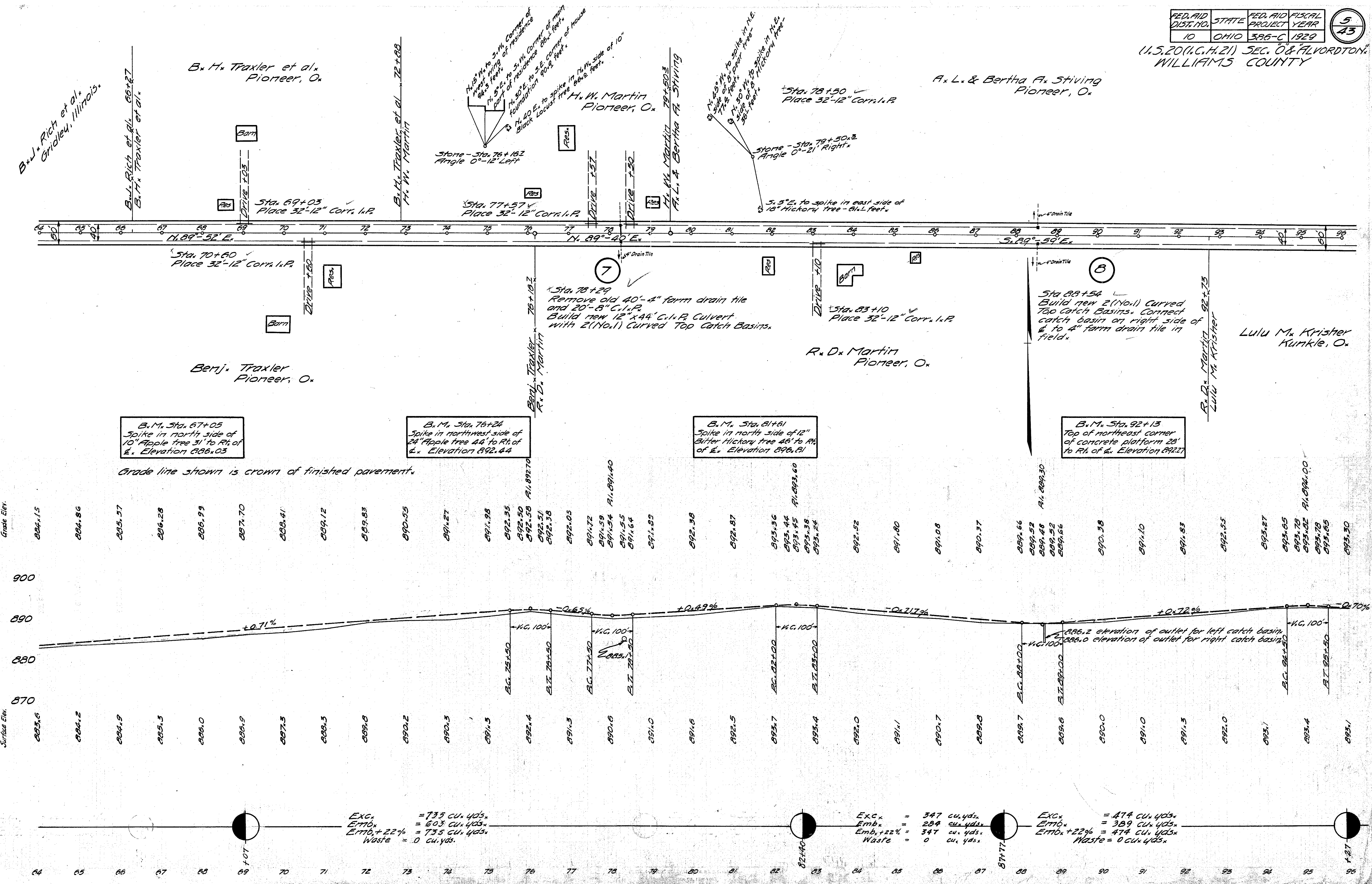
Exc. = 5211 cu. yds.
Emb. = 4271 cu. yds.
Emb.+22% = 5211 cu. yds.
Waste = 0 cu. yds.

Exc. = 1055 cu. yds.
Emb. = 865 cu. yds.
Emb.+22% = 1055 cu. yds.
Waste = 0 cu. yds.

FED. AID DIST. NO.	STATE	FED. AID PROJECT	FISCAL YEAR
10	OHIO	386-C	1929

5
43

U.S. 20 (U.G.M. 21) SEC. 0 & ALVORDTON, WILLIAMS COUNTY



B. H. Traxler et al.
Pioneer, O.

A. L. & Bertha A. Stiving
Pioneer, O.

H. W. Martin
Pioneer, O.

Benj. Traxler
Pioneer, O.

R. D. Martin
Pioneer, O.

Lulu M. Krisher
Kunkle, O.

B.M. Sta. 67+05
Spike in north side of
10" Apple tree 31' to R. of
L. Elevation 886.03

B.M. Sta. 76+24
Spike in northwest side of
24" Apple tree 44' to R. of
L. Elevation 892.44

B.M. Sta. 81+61
Spike in north side of 12"
Butter Hickory tree 46' to R.
of L. Elevation 896.81

B.M. Sta. 92+13
Top of northeast corner
of concrete platform 28'
to R. of L. Elevation 892.27

Grade line shown is crown of finished pavement.

FED. AID DIST. NO.	STATE	FED. AID PROJECT YEAR	FISCAL YEAR
10	OHIO	386-C	1929

6
43

U.S. 20 (U.C.H. 21) SEC. O' & ALVORDTON
WILLIAMS COUNTY

A. L. & Bertha A. Stiving
Pioneer, O.

W. H. Martin
Pioneer, O.

Lito. H. Ebaugh, estate

Heirs: - Mary Ebaugh,
Kurkle, Ohio
Arthur Ebaugh,
Kurkle, O.
Josie B. Esterline,
Kurkle, O

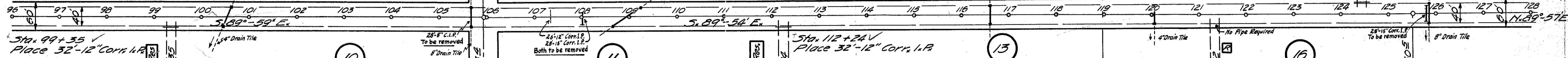
Stone - Sta. 125+50.3
Angle 0°-9' Left.

Sta. 100+56
Remove 36"-4" farm drain tile.
Build new 12"x48" C.I.P. Culvert
with 2 (No. 1) Curved Top Catch Basins.

Stone - Sta. 105+93.4
Angle 0°-5' Right.

Sta. 108+97.5
Remove 36"-14" farm drain tile.
Build new 18"x84" C.I.P. Culvert
with 2 (No. 1) Curved Top Catch Basins.
1/2" 1/4" Drain Tile

Sta. 125+80
Remove 28"-15" Cork I.P.
Build new 18"x46" C.I.P.
Culvert with 2 standard
headwalls.



Sta. 105+69
Remove 28"-8" C.I.P.
Build new 12"x44" C.I.P. Culvert
with 2 (No. 1) Curved Top Catch
Basins.

Sta. 108+03
Remove 28"-15" Cork I.P., also 26"-12"
Cork I.P. at Sta. 107+40.
Build new 20"x40" C.I.P. Culvert
with 2 standard headwalls.

Sta. 116+62
Remove 54"-4" farm drain tile.
Build new 12"x44" C.I.P. Culvert
with 2 (No. 1) Curved Top Catch
Basins.

Sta. 125+85
Remove 54"-8" farm drain
tile. Build new 12"x44" C.I.P.
Culvert with 2 (No. 1) Curved
Top Catch Basins

Lulu M. Krisher
Kurkle, O.

C. E. & M. E. Hendricks
Pioneer, O.

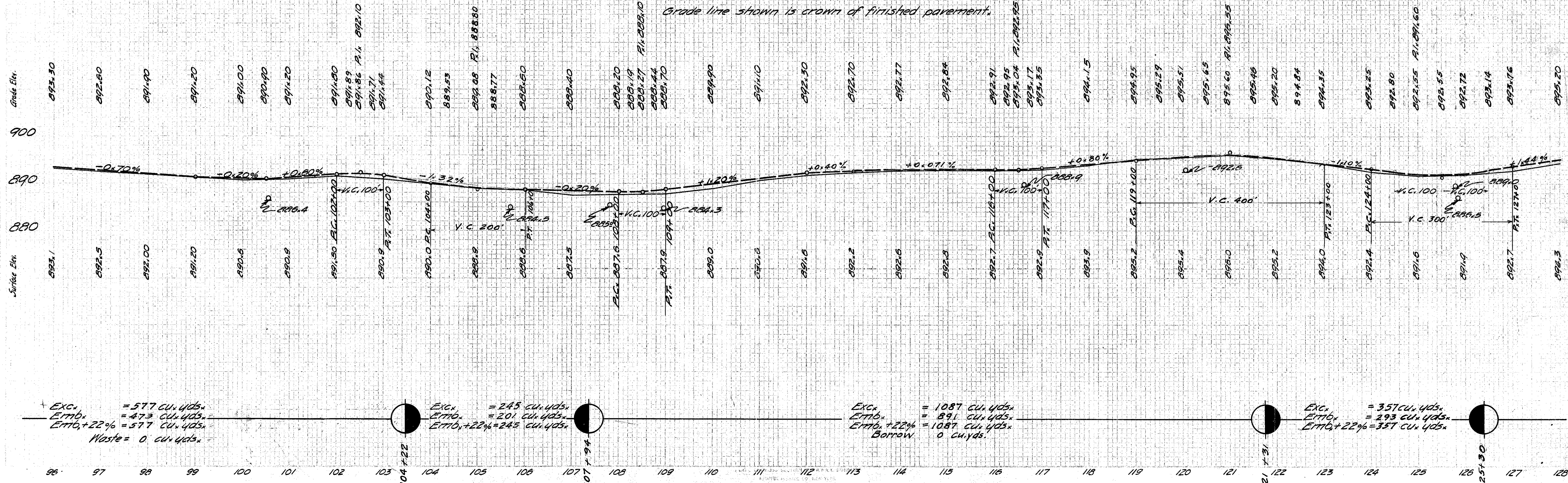
Sarah A. Greek
2224 7th Avenue North
Birmingham, Ala.

Mary M. Traxler
Kurkle, O.

B. M. Sta. 98+49
Spoke in south side of 10'
Pear tree 38 feet to Rt. of
E. Elevation 892.05

B. M. Sta. 111+69
Spoke in north side of 10'
Cottonwood tree 28' to Rt.
of E. Elevation 894.29

B. M. Sta. 123+33
Spoke in S. Side of Plum
tree 35 feet to left of E.
Elevation 895.98



Exc. = 577 cu. yds.
Emb. = 473 cu. yds.
Emb. + 22% = 577 cu. yds.
Waste = 0 cu. yds.

Exc. = 245 cu. yds.
Emb. = 201 cu. yds.
Emb. + 22% = 245 cu. yds.

Exc. = 1087 cu. yds.
Emb. = 891 cu. yds.
Emb. + 22% = 1087 cu. yds.
Borrow = 0 cu. yds.

Exc. = 357 cu. yds.
Emb. = 293 cu. yds.
Emb. + 22% = 357 cu. yds.

FED. AID DIST. NO.	STATE	FED. AID PROJECT	FISCAL YEAR
10	OHIO	386-C	1929

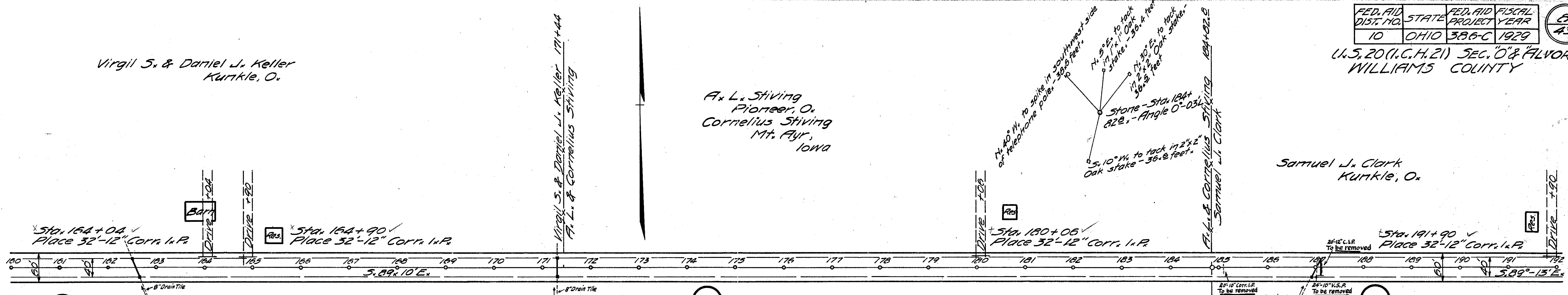
8/43

U.S. 20 (I.C.H. 21) SEC. O & ALVORDTON, WILLIAMS COUNTY

Virgil S. & Daniel J. Keller
Kurtle, O.

A. L. Stiving
Pioneer, O.
Cornelius Stiving
Mt. Ayr,
IOWA

Samuel J. Clark
Kurtle, O.



Sta. 162+56
Remove 58'-8" farm drain tile.
Build new 18"x48" C.I.P. Culvert with 2 (No.1) Curved Top Catch Basins.

Sta. 171+29
Remove 54'-8" farm drain tile.
Build new 12"x44" C.I.P. Culvert with 2 (No.1) Curved Top Catch Basins.

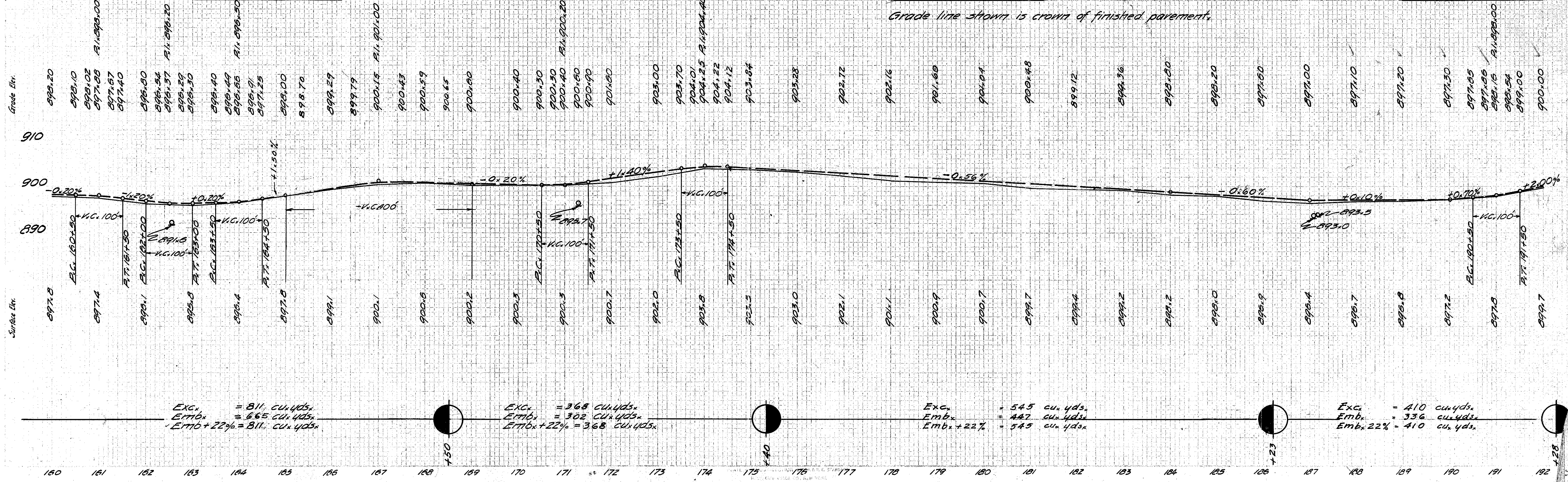
Sta. 187+02 & 187+11.5
Remove 20'-10" C.I.P. at Sta. 185+07, 24'-10" W.S.P. at Sta. 187+02 and 20'-12" C.I.P. at Sta. 187+11.5.
Build new 12"x48" C.I.P. Culvert with 1 (No.1) Curved Top Catch Basin and 18"x42" C.I.P. Culvert 2 Sid. Headwall.
G. L. Shimmerbarger
Fayette, O.

M. E. Walker
Kurtle, O.

B.M. Sta. 164+28
Spike in southeast corner of barn 94 feet to left of E. Elevation 900.09.

B.M. Sta. 180+13
Spike in southwest corner of wood house 150 feet to left of E. Elevation 900.53

B.M. Sta. 192+15
Spike in north side of 20" Apple tree 60 feet to left of E. Elevation 902.76



Exc. = 811 cu. yds.
Emb. = 665 cu. yds.
Emb. + 22% = 811 cu. yds.

Exc. = 368 cu. yds.
Emb. = 302 cu. yds.
Emb. + 22% = 368 cu. yds.

Exc. = 545 cu. yds.
Emb. = 447 cu. yds.
Emb. + 22% = 545 cu. yds.

Exc. = 410 cu. yds.
Emb. = 336 cu. yds.
Emb. + 22% = 410 cu. yds.

CURVE DATA ON SHEET NO. 33

FED. AID DIST. NO.	STATE	FED. AID PROJECT	FISCAL YEAR
10	OHIO	336-C	1929

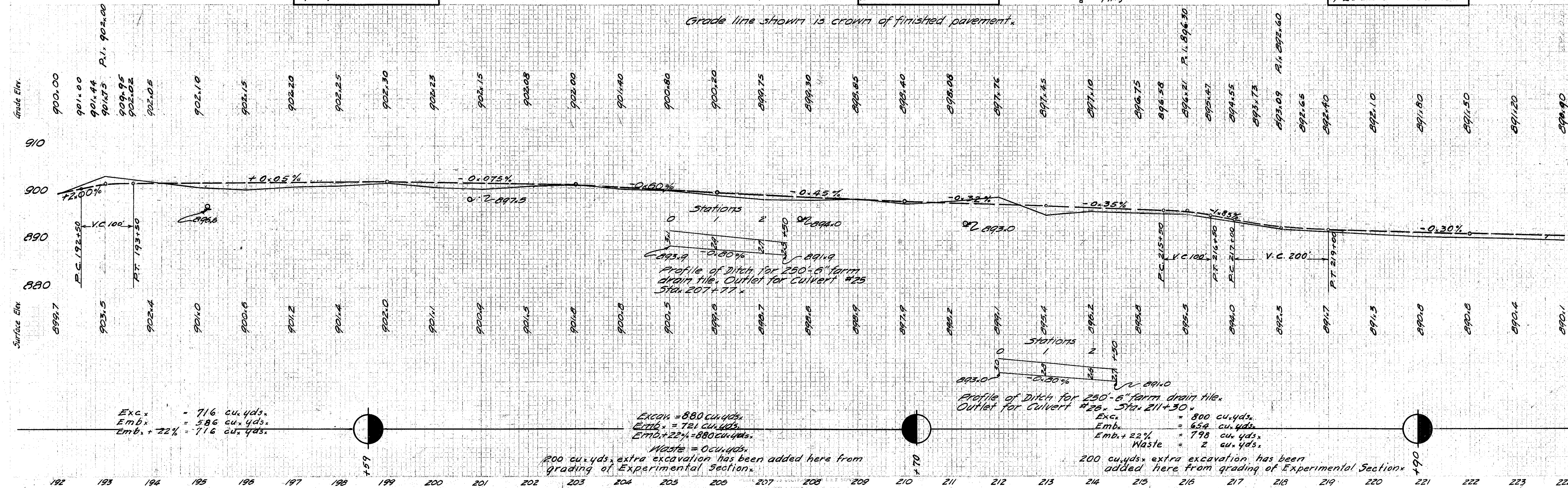
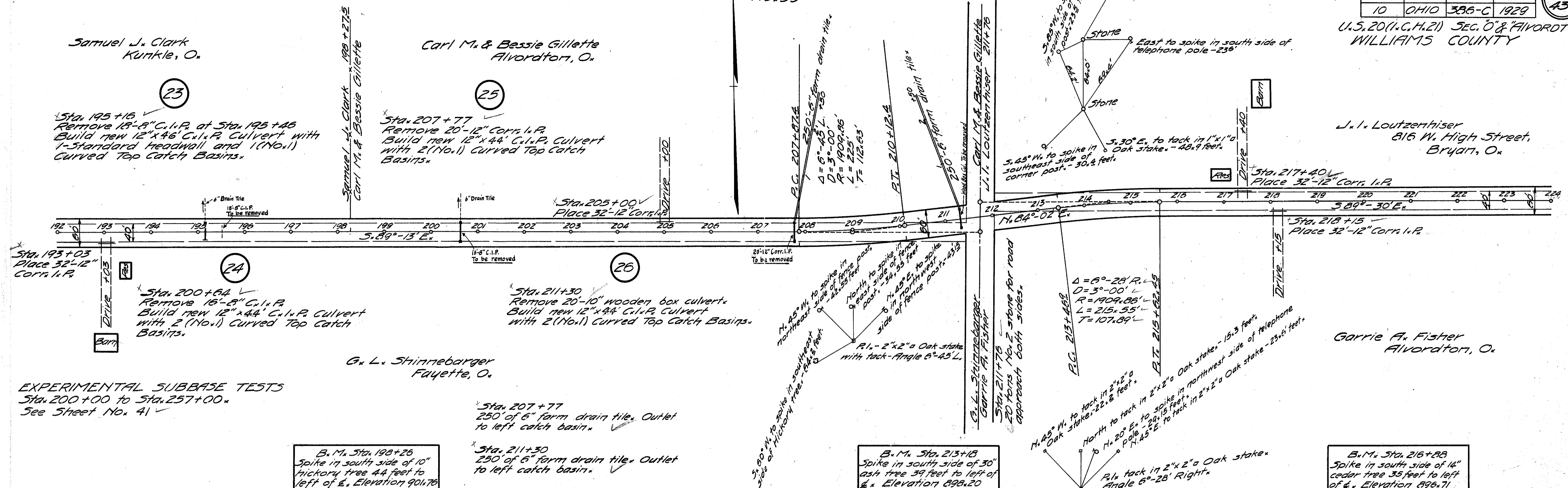
U.S. 20 (1/4, 1/2) SEC. 0 & 8 ALVORDTON WILLIAMS COUNTY

Samuel J. Clark
Kunkle, O.

Carl M. & Bessie Gillette
Alvordton, O.

J. I. Loutzenhiser
816 W. High Street,
Bryan, O.

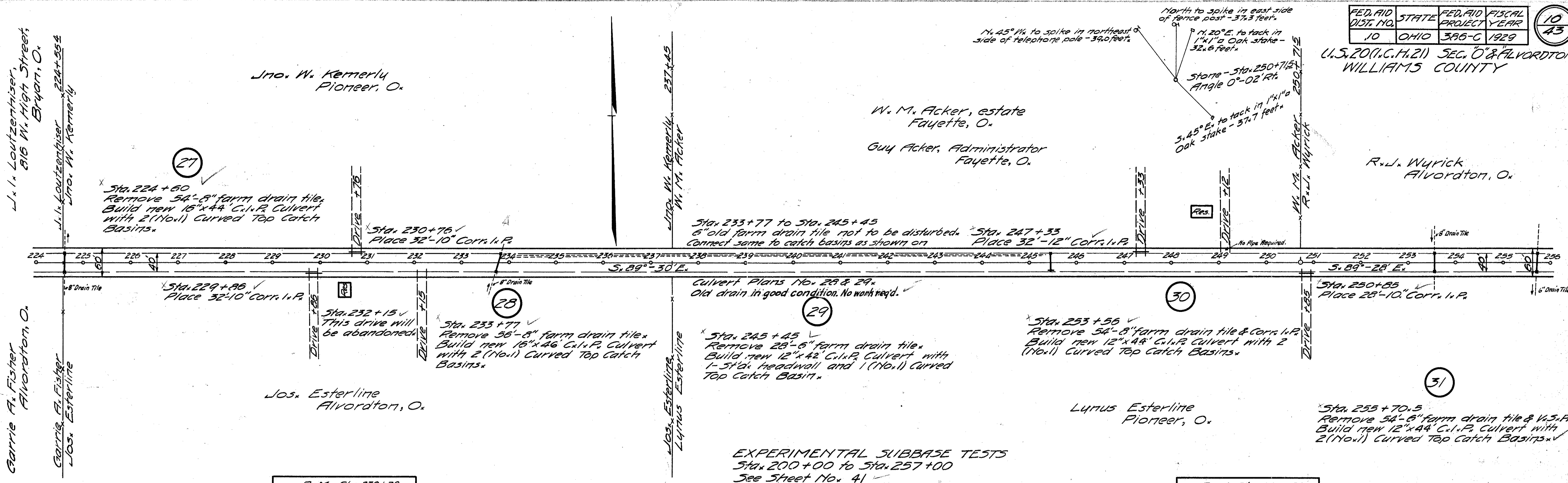
Garric A. Fisher
Alvordton, O.



FED. AID DIST. NO.	STATE	FED. AID PROJECT YEAR	FISCAL YEAR
10	OHIO	386-C	1929

U.S. 20 (H.C.H.21) SEC. O & ALVORDTON
WILLIAMS COUNTY

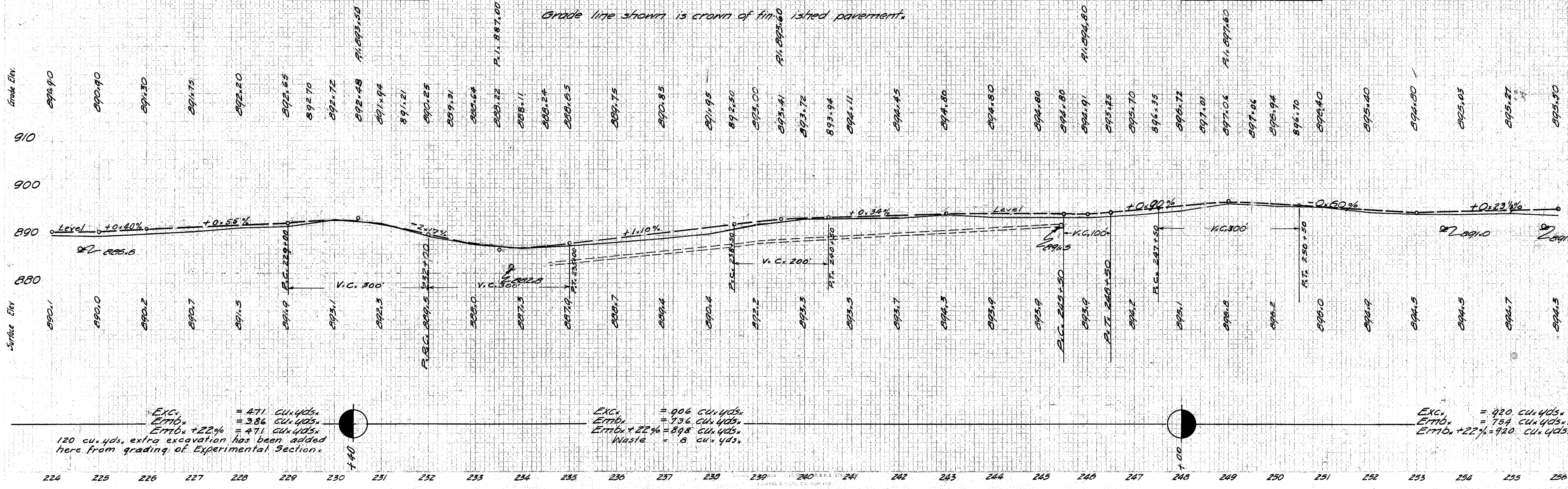
10
43



B.M. Sta. 230+28
Spike in south side of 8" maple tree 32 feet to right of E. Elevation 894.67

B.M. Sta. 248+84
Spike in southeast corner of residence 96 feet to left of E. Elevation 900.44

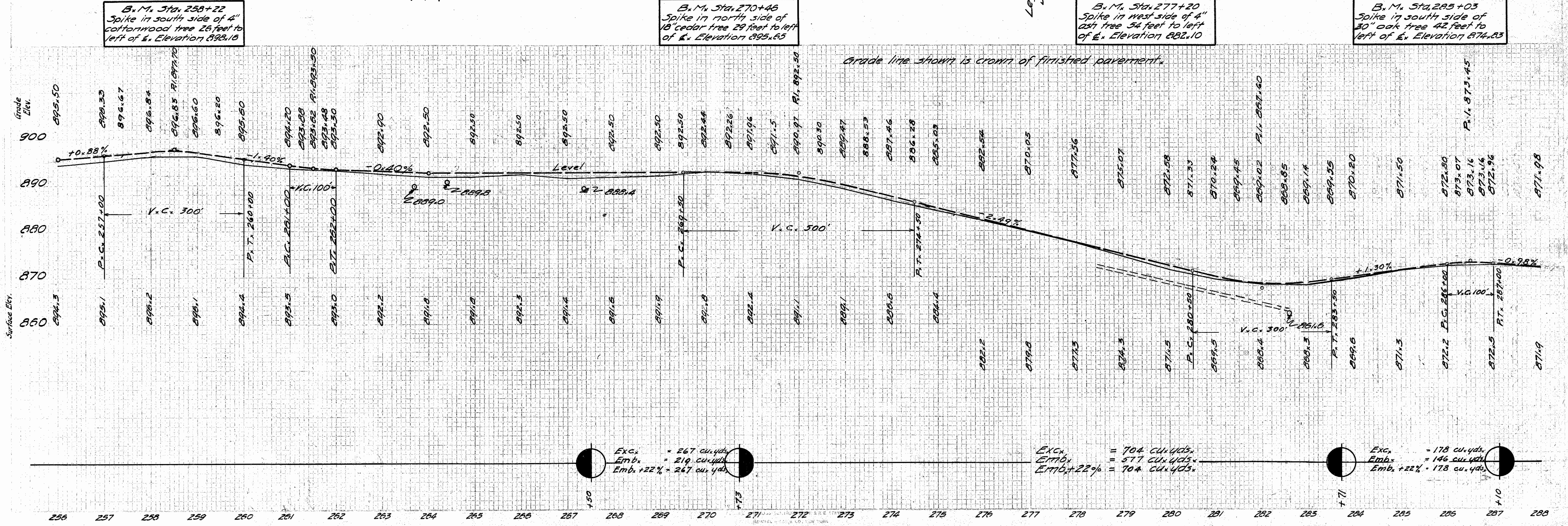
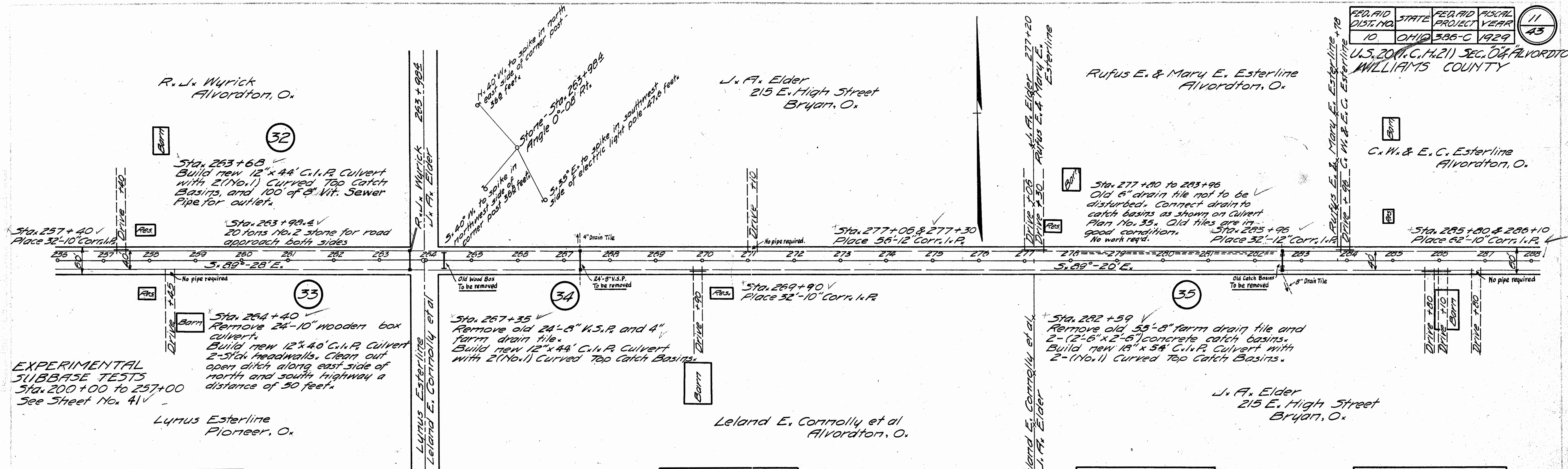
EXPERIMENTAL SUBBASE TESTS
Sta. 200+00 to Sta. 257+00
See Sheet No. 41



FED. AID DIST. NO.	STATE	FED. AID PROJECT	FISCAL YEAR
10	OHIO	386-C	1929

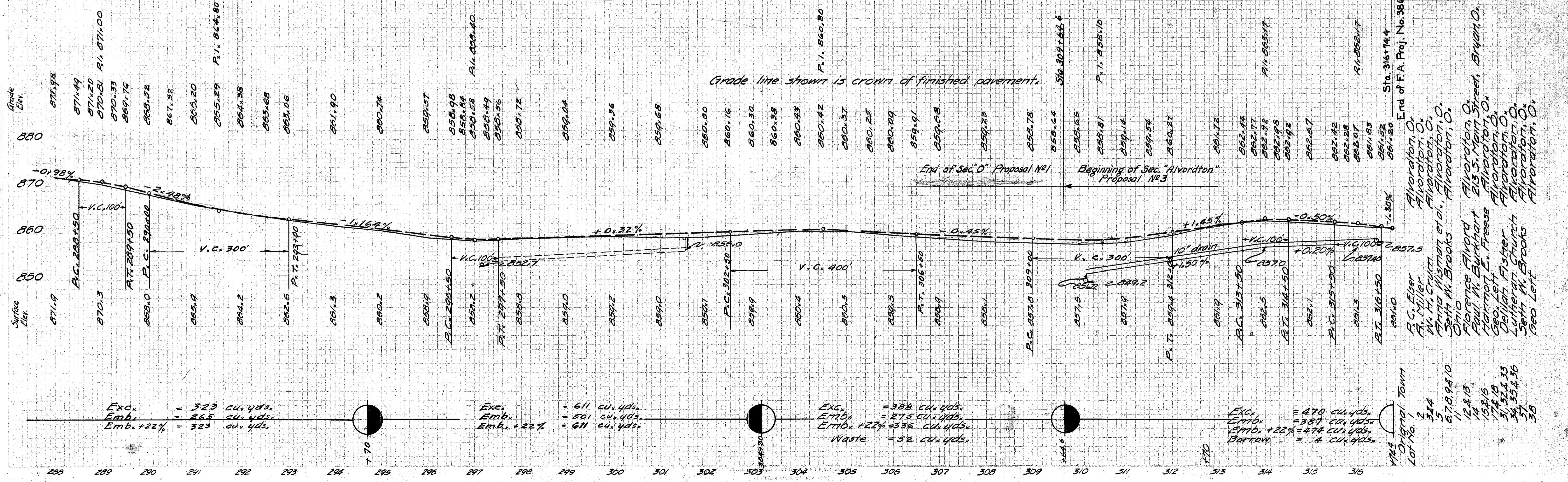
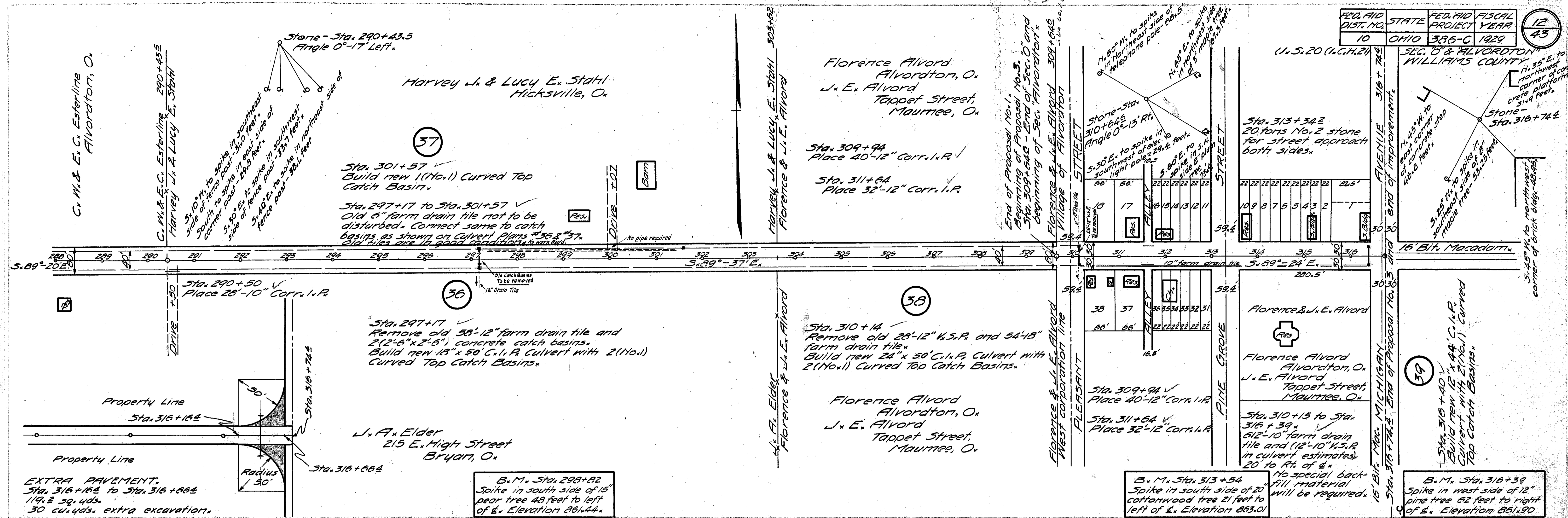
U.S. 20 (P.C.H.21) SEC. OF ALVORDTON WILLIAMS COUNTY

11
43



FED. AID DIST. NO.	STATE	FED. AID PROJECT	FISCAL YEAR
10	OHIO	386-C	1929

12
43

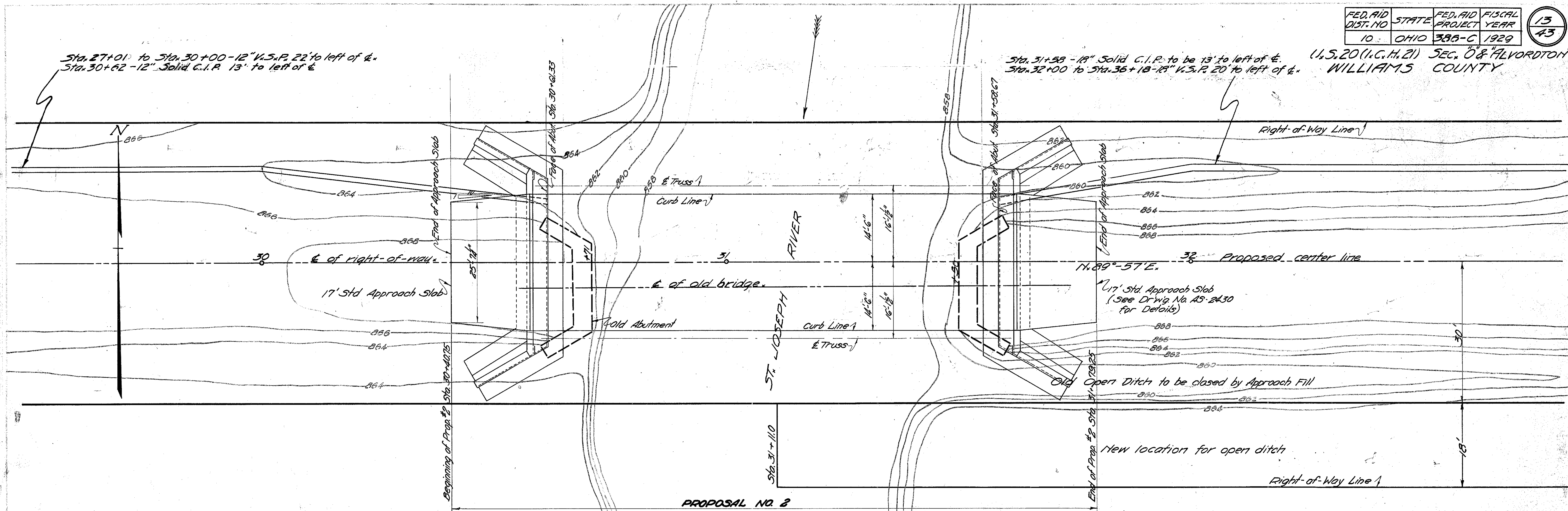


- Original Town Lot No. 1
2
3
4
5
6
7
8
9
10
11
12
13
14
15
16
17
18
19
20
21
22
23
24
25
26
27
28

FED. AID DIST. NO.	STATE	FED. AID PROJECT	FISCAL YEAR
10	OHIO	386-C	1929

13
43

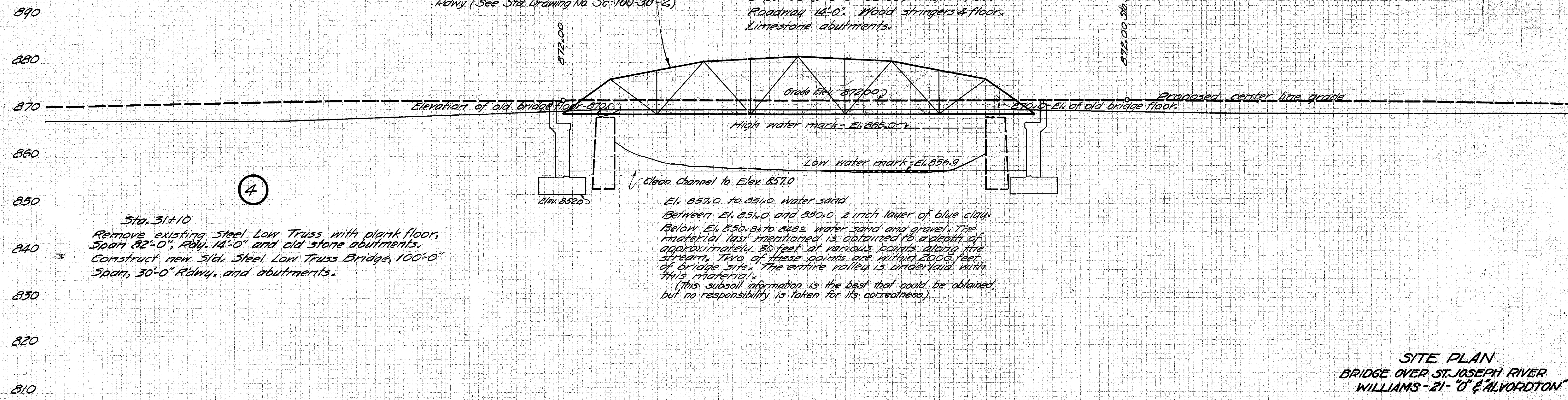
U.S. 20 (I.C.H. 21) SEC. O & ALVORDTON
WILLIAMS COUNTY



Proposed Bridge:
Std. Steel Low Truss, 100'-0" span, 30'-0"
Rdwy. (See Std. Drawing No. Sc-100-30-2)

Present Bridge:
Low Pin-connected Pratt Truss,
5 panels @ 13'-8" = 82'-00", Height = 9'-00",
Roadway 14'-0". Wood stringers & floor.
Limestone abutments.

SCALE: 1 inch = 10 feet
No temporary detour bridge required.



4

Sta. 31+10
Remove existing Steel Low Truss with plank floor, Span 82'-0", Rdwy. 14'-0" and old stone abutments.
Construct new Std. Steel Low Truss Bridge, 100'-0" Span, 30'-0" Rdwy. and abutments.

SITE PLAN
BRIDGE OVER ST. JOSEPH RIVER
WILLIAMS-21-"O" & ALVORDTON
OCT. 1929 BUREAU OF BRIDGES
checked L.W.C. Reviewed H.H.C. 11/1/29

FED. AID DIST. NO.	STATE	FED. AID PROJECT YEAR	FISCAL YEAR
10	OHIO	3886-C	1929

U.S. 201 (C.H. 21), SEC. 08, ALVORDTON, WILLIAMS COUNTY

Jno. H. Ebaugh, estate
 Heirs: - Mary Ebaugh, Kunkle, O.
 Arthur Ebaugh, Kunkle, O.
 Losie B. Esterline Kunkle, O.

Mary Ebaugh, Kunkle, O.
 Sarah J. Knisely, 439 E. Butler Street, Bryant, O.

Chas. S. Esterline et al. Kunkle, O.

Mike Walker, estate Kunkle, O.
 Sarah Burkholder, Administratrix West Unity, O.

M. E. Walker Kunkle, O.

Sta. 129+94
 Remove 60'-6" farm drain tile.
 Build new 12" x 56" C.I.P. Culvert with 2 (No. 1) Curved Top Catch Basins.

Sta. 133+98
 Remove 26'-16" V.S.P. and 58'-8" farm drain tile.
 Build new 20' x 30" C.I.P. Culvert with 2 (No. 1) Curved Top Catch Basins.

Sta. 128+90
 Place 32'-12" Corr. I.P.

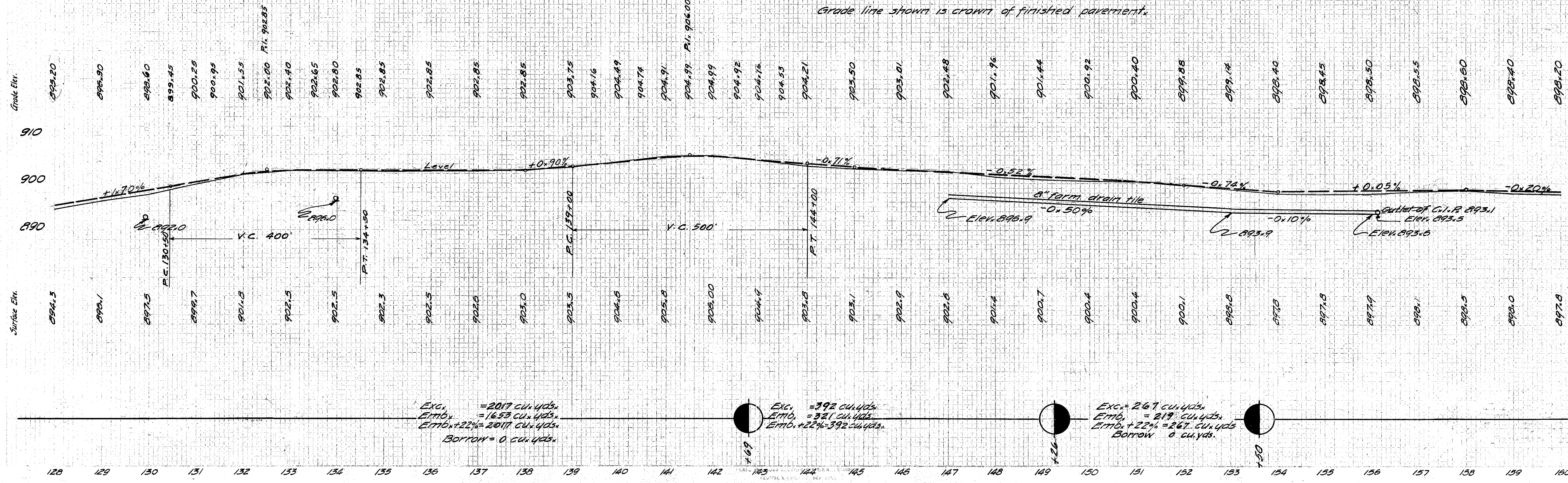
B.M. Sta. 129+00
 Spike in north side of 6" Maple tree 46 feet to right of L. Elevation 900.39

B.M. Sta. 142+60
 Spike in south side of Apple tree 45 feet to left of L. Elevation 908.72

Sta. 147+00 to Sta. 156+13
 Place 907'-8" farm drain tile and (6'-8" V.S.P. included in the culvert estimate at Sta. 156+14).
 20' Right of E. No special backfill material will be required.

B.M. Sta. 157+58
 Spike in south side of Pine tree 33 feet to left of L. Elevation 898.97

Grade line shown is crown of finished pavement.



Exc. = 2017 cu. yds.
 Emb. = 16.53 cu. yds.
 Emb. + 22% = 2017 cu. yds.
 Borrow = 0 cu. yds.

Exc. = 392 cu. yds.
 Emb. = 321 cu. yds.
 Emb. + 22% = 392 cu. yds.

Exc. = 267 cu. yds.
 Emb. = 219 cu. yds.
 Emb. + 22% = 267 cu. yds.
 Borrow = 0 cu. yds.

128 129 130 131 132 133 134 135 136 137 138 139 140 141 142 143 144 145 146 147 148 149 150 151 152 153 154 155 156 157 158 159 160