

FED. RD. DIST. NO.	STATE	PROJECT	FISCAL YEAR	1 22
10	OHIO		1944	

STATE OF OHIO  
DEPARTMENT OF HIGHWAYS

# BRYAN - WEST UNITY ROAD S.H. 307 SEC. F (PT.) TOLEDO - ANGOLA ROAD

S.H. 21, SEC. ALVORDTON (PT.) R, S-1, FAYETTE (PT.) K-2  
WILLIAMS AND FULTON COUNTIES  
VILLAGES OF ALVORDTON AND FAYETTE  
MILL CREEK AND GORHAM TOWNSHIPS

WILLIAMS & FULTON COUNTIES  
S.H. 21, SEC. ALVORDTON (PT.) R,  
S-1, FAYETTE (PT.) K-2  
S.H. 307 SEC. F (PT.)

### CONVENTIONAL SIGNS

COUNTY LINE	-----
TOWNSHIP LINE	- - - - -
SECTION LINE	-----
CORPORATION LINE	-----
PROPERTY LINE	-----
FENCE LINE	-----
CENTER LINE	-----
STEAM RAILROAD	=====
POLE LINE	-----
HEDGE	-----
DRAIN PIPE (NEW)	-----
DRAIN PIPE (OLD)	-----
GUARD RAIL	-----

### INDEX OF SHEETS

TITLE SHEET	1
TYPICAL SECTION	2-3
PLAN & PROFILE	4-16
CROSS SECTIONS	17-20
GENERAL NOTES, SUMMARIES	21
SUMMARY OF QUANTITIES	22

### LINE DATA

**S.H. 307**  
Begin Sec. F (Pt.) Sta. 0+00  
End Sec. F (Pt.) Sta. 13+15.57  
Gross Length = Net Length Sec. F (Pt.) = 1315.57 Lin. Ft.

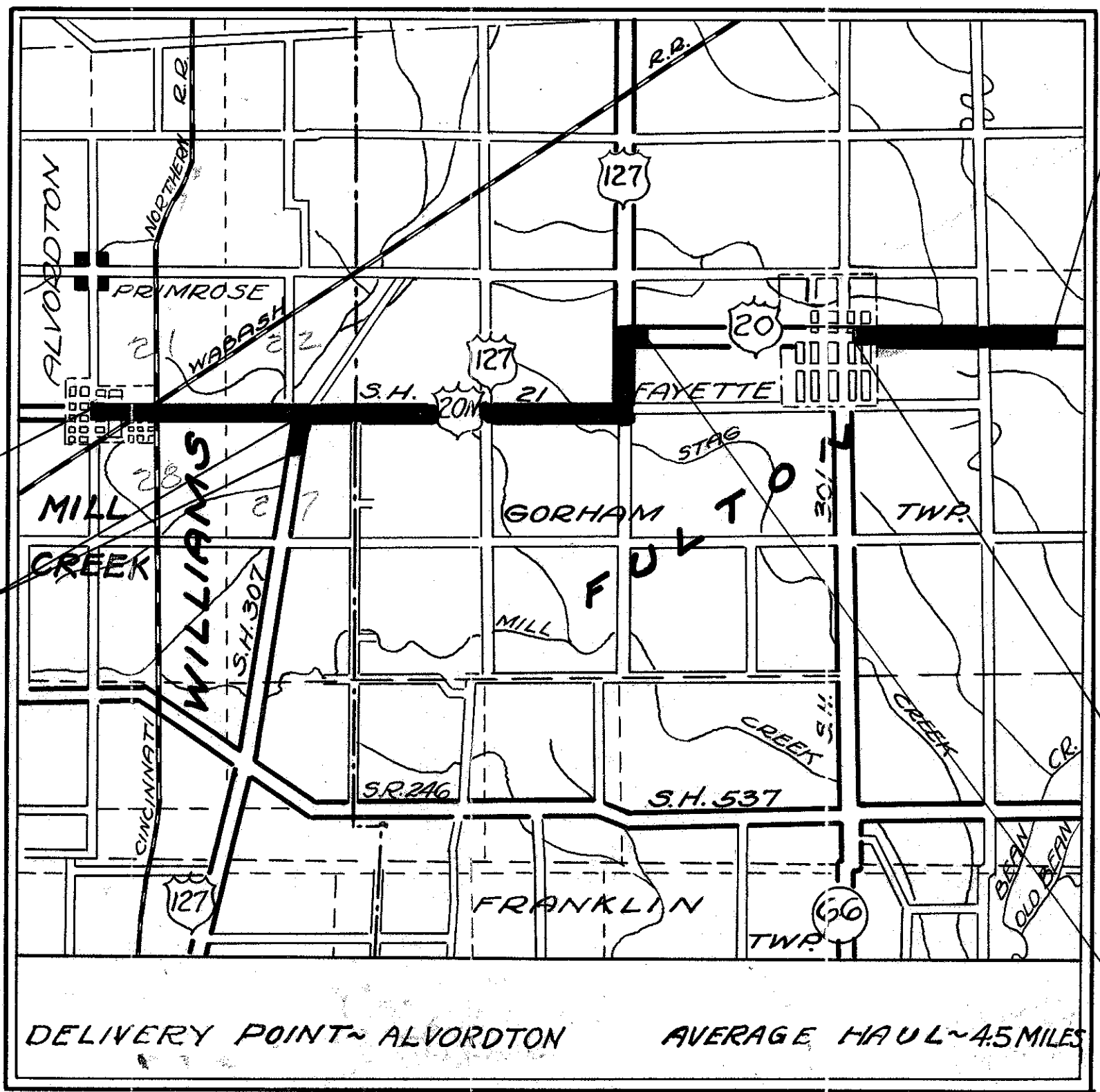
**S.H. 21**  
Begin Project and Sec. Alvordton (Pt.) Sta. 0-50  
End Sec. Alvordton (Pt.) Sta. 26+21.4  
Gross Length Sec. Alvordton (Pt.) = 2671.4 Lin. Ft.  
Deductions for Railroads:-  
Sta. 25+52 to Sta. 25+61.6 = 9.6 Lin. Ft.  
Sta. 25+86 to Sta. 25+95 = 9.0 Lin. Ft.  
Total Deductions = 18.6 Lin. Ft.  
Net Length Sec. Alvordton (Pt.) = 2652.8 Lin. Ft.

Begin Sec. "R" Sta. 26+21.4  
End Sec. "R" Sta. 105+05 = Sta. 0+00 Sec. "S-1"  
Gross Length of Sec. "R" = 7883.6 Lin. Ft.  
Deduction for Railroad Sta. 28+04.3 to Sta. 28+46 = 41.7 Lin. Ft.  
Net Length of Sec. "R" = 7841.9 Lin. Ft.

Begin Sec. "S-1" Sta. 0+00  
End Sec. "S-1" Sta. 134+00  
Gross Length Sec. "S-1" = Net Length = 13400 Lin. Ft.

Begin Sec. "K-2" Sta. 239+00 = Sta. 238+78.8 Fayette (Pt.)  
End Project and Sec. "K-2" Sta. 299+26.45  
Gross Length Sec. "K-2" = Net Length = 6026.45 Lin. Ft.  
Net Length Rural Sections = 23,583.92 Lin. Ft. or 5.4136 Miles

Begin Sec. Fayette (Pt.) Sta. 222+21  
End Sec. Fayette (Pt.) Sta. 238+78.8 = 1657.8 Lin. Ft. or 0.313 Miles  
Net Length of Municipal = 4310.6 Lin. Ft. or 0.8164 Miles  
Net Length of Work = 32,894.52 Lin. Ft. or 6.230 Miles



**LOCATION PLAN**  
Scale 1 inch = 1 Mile

PORTION TO BE IMPROVED   
STATE HIGHWAYS   
OTHER ROADS

### SCALES

PLAN	1" = 100' & 50'
PROFILE, HORIZONTAL	1" = 100' & 50'
PROFILE, VERTICAL	1" = 5'
CROSS SECTIONS	1" = 5'

End Project  
Sta. 299+26.45

Begin Project  
Sta. 0-50

Begin Work  
S.H. 307  
Sec. F (Pt.)  
Sta. 0+00

End Work  
S.H. 307  
Sec. F (Pt.)  
Sta. 13+15.57

Begin Work  
Sta. 222+21

End Work  
Sta. 134+00

The Standard Specifications of the State of Ohio Department of Highways including changes and Supplemental Specifications listed in the proposal shall govern this improvement.

I hereby approve these plans and declare that the making of this improvement will not require the closing to traffic of the highway and that provisions for the maintenance and safety of traffic will be as set forth on the plans and estimates.

The right of way necessary for this improvement will be provided by the State of Ohio.

- Approved: \_\_\_\_\_  
Date: \_\_\_\_\_ Resident Division Deputy Director
- Approved: \_\_\_\_\_  
Date: \_\_\_\_\_ Chief Engineer Bureau of Maintenance
- Approved: \_\_\_\_\_  
Date: \_\_\_\_\_ Chief Engineer Bureau of Bridges & R.R. Crossings
- Approved: *Murray D. Leff*  
Date: 4-2-44 Chief Engineer Bureau of Location & Right of Way
- Approved: *Alvinogue*  
Date: 4-26-44 First Asst. Director & Chief Engineer
- Approved: *F. J. Stem*  
Date: 4-16-44 Director of Highways.

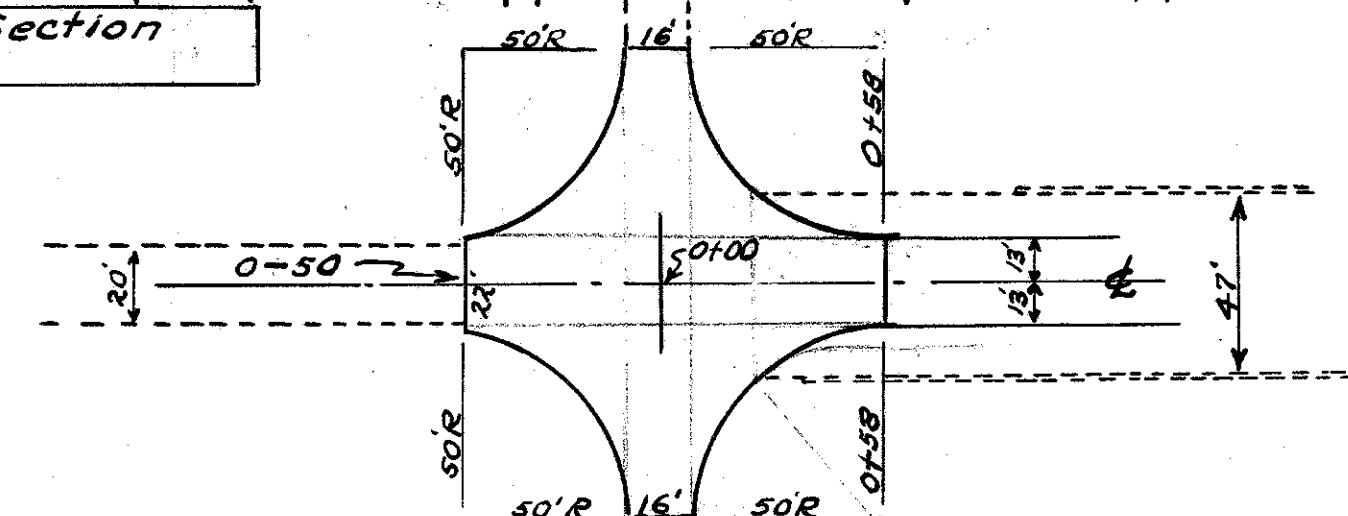
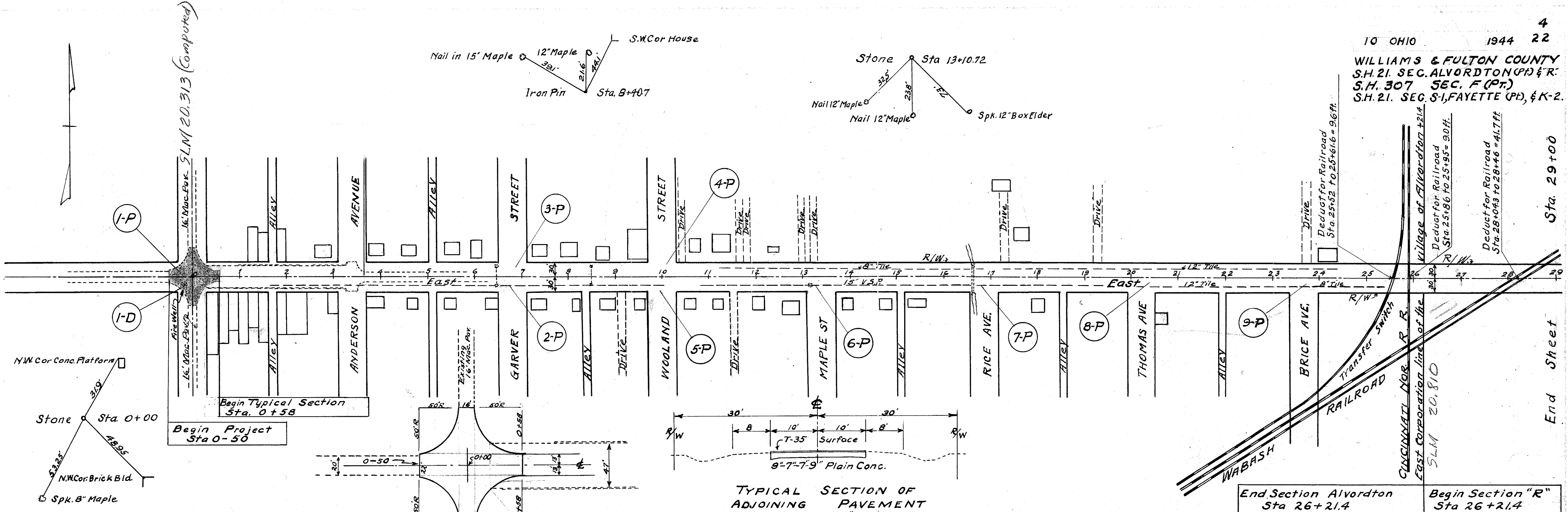
STANDARD DRAWINGS	
G-7.07	6-1-42
I-1, 2, 3, 4 and 5.	3-1-39
I-8 C.B. No. 6	12-15-41
I-12	7-1-42

SUPPLEMENTAL SPECIFICATIONS	
I-117	Jan. 15 1944
S-122	4-15-37

CONSTRUCTION BUREAU  
JUN 21 1955  
GROUND PHOTOLAB

FILE No. WILLIAMS & FULTON COUNTIES  
S.H. 21, SEC. ALVORDTON (PT.) R, S-1, FAYETTE (PT.) K-2  
S.H. 307 SEC. F (PT.)  
DATE OF LETTING \_\_\_\_\_  
CONTRACT No. \_\_\_\_\_

WILLIAMS & FULTON COUNTY  
S.H. 21. SEC. ALVORDTON (PH) & R.  
S.H. 307 SEC. F (PT)  
S.H. 21. SEC. S-1, FAYETTE (PH) & K-2.



TYPICAL SECTION OF ADJOINING PAVEMENT  
SCALE 1" = 10'

BM. Spike in 20" Maple  
25' Right Sta. 0+25  
Elevation 861.67

BM. @ S.W. Cor. Gas Pump Foundation  
30' Left Sta. 12+25  
Elevation 855.95

BM. N.W. Cor. Signal Tower Foundation  
97' Right Sta. 26+11  
Elevation 849.59

APPROACH I-P  
Scale 1" = 50'

Note: See Typical Section Sheet No. 2.

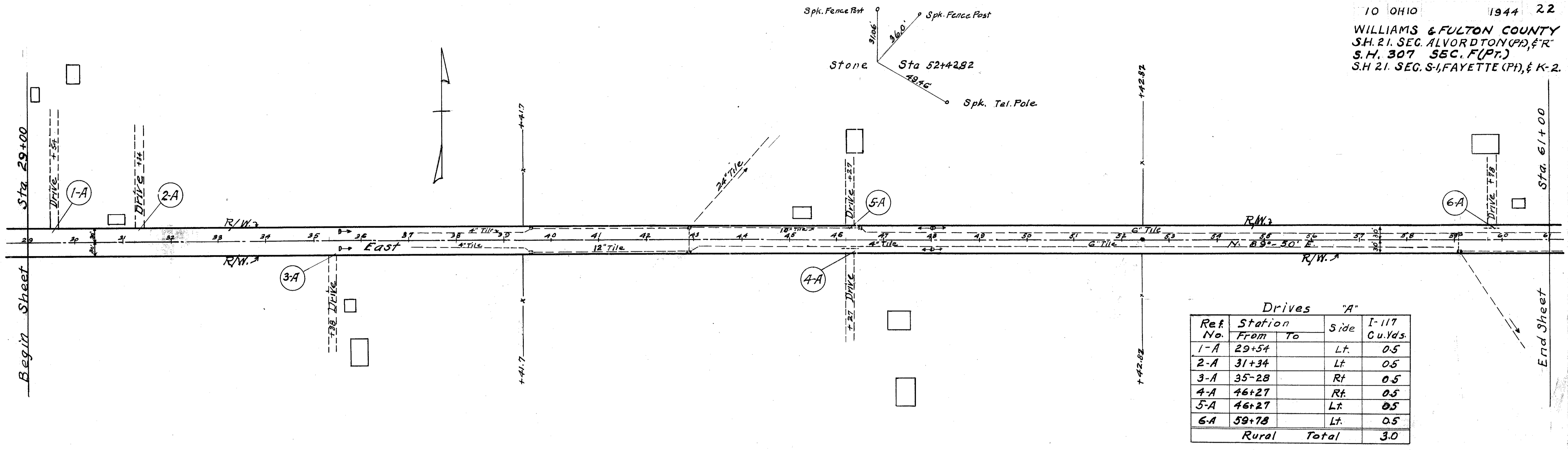
Ref No	Station		Side	Extra Pavement 'P'			
	From	To		T-35 1/2" Surface Course Sq. Yds.	T-35 1" Minimum Leveling Course Sq. Yds.	T-30 Prime Coat Sq. Yds.	I-117 Cu. Yds.
1-P	0-50	0+58		683.3	683.3	683.3	
2-P	6+80		Rt.				0.5
3-P	6+80		Lt.				0.5
4-P	9+95		Rt.				0.5
5-P	9+95		Lt.				0.5
6-P	13+26		Rt.				0.5
7-P	16+84		Rt.				0.5
8-P	20+20		Rt.				0.5
9-P	23+65		Rt.				0.5
Municipal Total				683.3	683.3	683.3	4.0

ROADWAY DRAINAGE 'D'					
Ref. No.	Station From	Station To	Side	I-8 Adjust Man Hole Topography Each	Remarks
I-D	0-19		Rt.	1	Standard Man Hole Cover on Fire Well
Total Municipal				1	

865  
860  
855  
850  
845

861.39	860.09	859.09	858.69	858.59	858.49	858.39	858.29	858.19	858.09	857.91	857.15	855.64	854.44	853.04	851.64	850.97	849.74	849.24	848.74	848.24	847.74	847.24	847.74	847.74	847.74	847.74	848.25	848.37	848.50	848.62
0	1	2	3	4	5	6	7	8	9	10	11	12	13	14	15	16	17	18	19	20	21	22	23	24	25	26	27	28	29	

10 OHIO 1944 22  
 WILLIAMS & FULTON COUNTY  
 S.H. 21. SEC. ALVORDTON (PA), & R.  
 S.H. 307 SEC. F (PT.)  
 S.H. 21. SEC. S-1, FAYETTE (PT.), & K-2



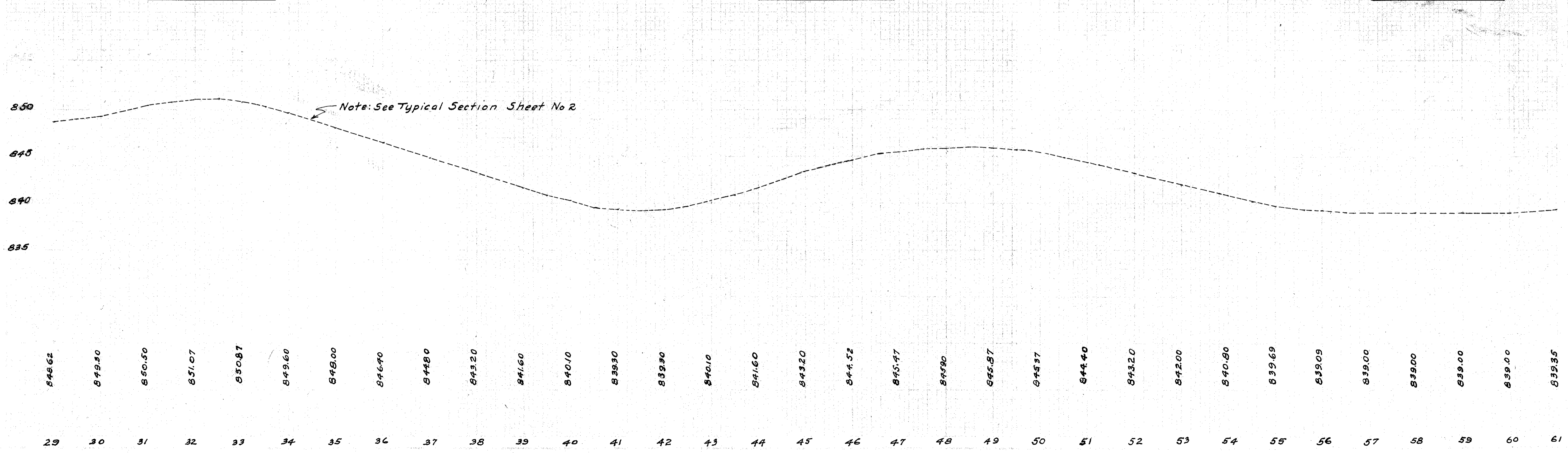
Drives "A"

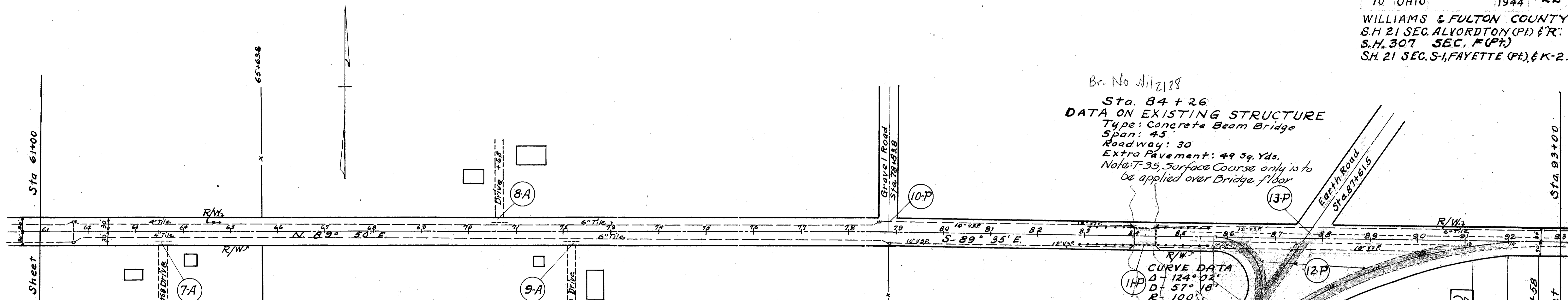
Ref. No.	Station From	To	Side	I-117 Cu.Yds.
1-A	29+54		Lt.	0.5
2-A	31+34		Lt.	0.5
3-A	35-28		Rt.	0.5
4-A	46+27		Rt.	0.5
5-A	46+27		Lt.	0.5
6-A	59+78		Lt.	0.5
Rural Total				3.0

BM. Spike Power Pole.  
 27' Left Sta. 31.95  
 Elevation 850.88

BM. Spike 16" Maple.  
 28' Right Sta. 47+69  
 Elevation 846.00

BM. Spike 24" Maple.  
 25' Left Sta. 59+74  
 Elevation 839.88





Br. No. Wil 2188  
Sta. 84+26  
DATA ON EXISTING STRUCTURE  
Type: Concrete Beam Bridge  
Span: 45'  
Roadway: 30'  
Extra Pavement: 49 Sq. Yds.  
Note: T-35 Surface Course only is to be applied over Bridge floor

**Extra Pavement "P"**

Ref. No.	Station From	Station To	Side	T-35 1/4" Surface Course Sq. Yds.	B-35 1/2" Minimum Levelling Course Sq. Yds.	T-30 Prime Coat Sq. Yds.	I-117 Cu. Yds.
10-P	78+84		Lt.				0.5
11-P	84+26		Bridge	49.0		49.0	
12-P	86+80	92+55	Rt.	4209.7	4209.7	4209.7	
13-P	87+61		Lt.				0.5
<b>Rural Total</b>				<b>4258.7</b>	<b>4209.7</b>	<b>4258.7</b>	<b>1.0</b>

**Drives "A"**

Ref. No.	Station From	Station To	Side	I-117 Cu. Yds.
7-A	63+58		Rt.	0.5
8-A	70+65		Lt.	0.5
9-A	72+18		Rt.	0.5
<b>Rural Total</b>				<b>1.5</b>

**CURVE DATA**  
Δ - 124° 03'  
D - 57° 18'  
R - 100'  
T - 188.2'  
L - 216.47'

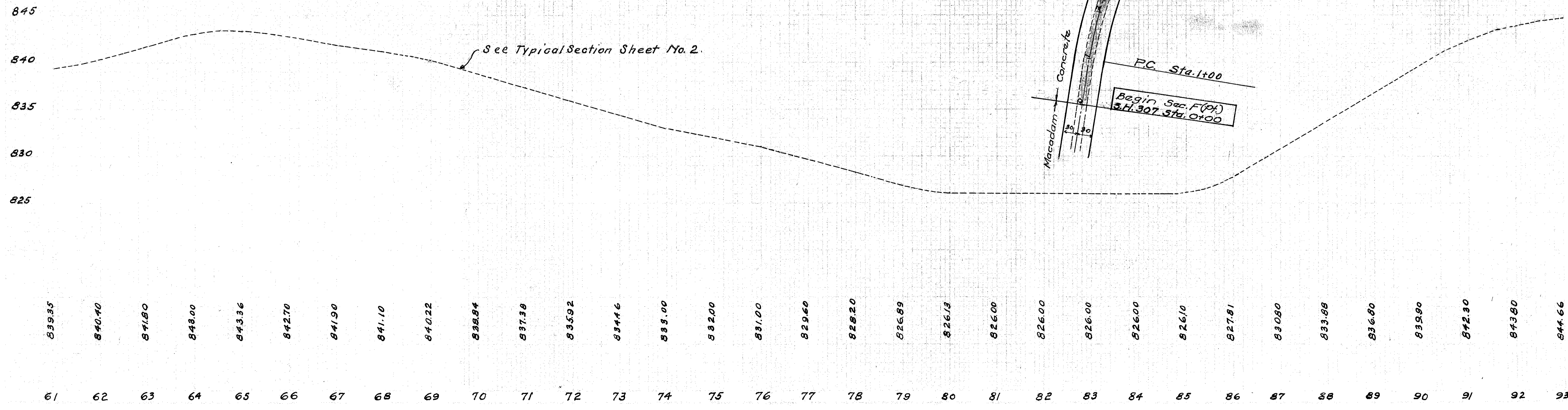
**CURVE DATA**  
Δ - 81° 14'  
D - 6° 00'  
R - 954.93'  
T - 818.96'  
L - 1353.9' Max. Superelevation = 183'  
Note: No additional Superelevation required.

BM. Spike 10" Box Elder  
27' Right Sta. 63+82  
Elevation 844.77

BM. Spike 24" Box Elder  
62' Left Sta. 69+80  
Elevation 841.19

BM. Spike 30" Maple  
24' Right Sta. 79+92  
Elevation 825.62

BM. @ NE East Cor. S. Bridge Curb  
15' Right Sta. 84+41  
Elevation 826.38

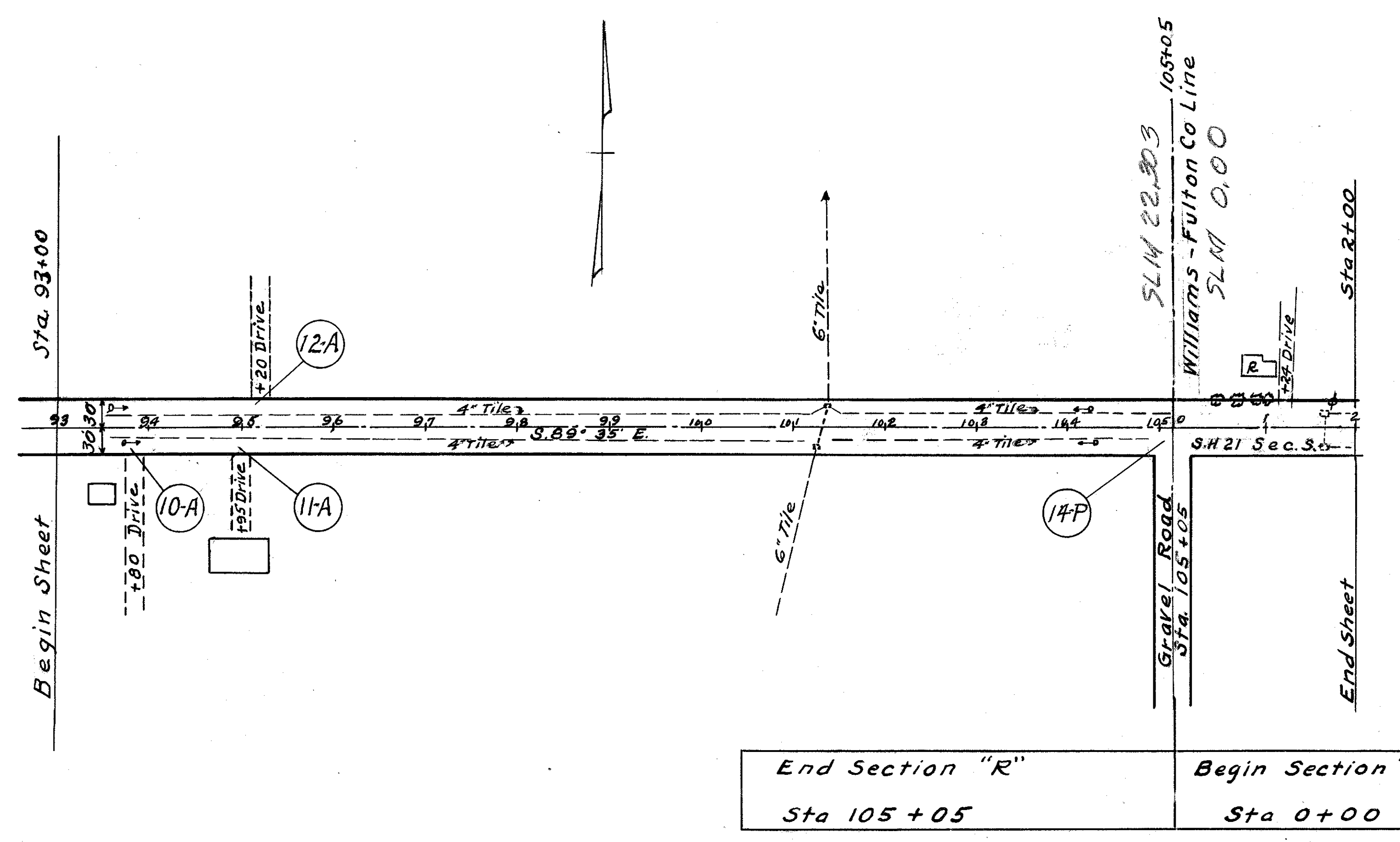


**Extra Pavement "P"**

Ref. No.	Station From	To	Side	I-117 Cu. Yds.
14-P	105+05		Rt.	0.5
Rural Total				0.5

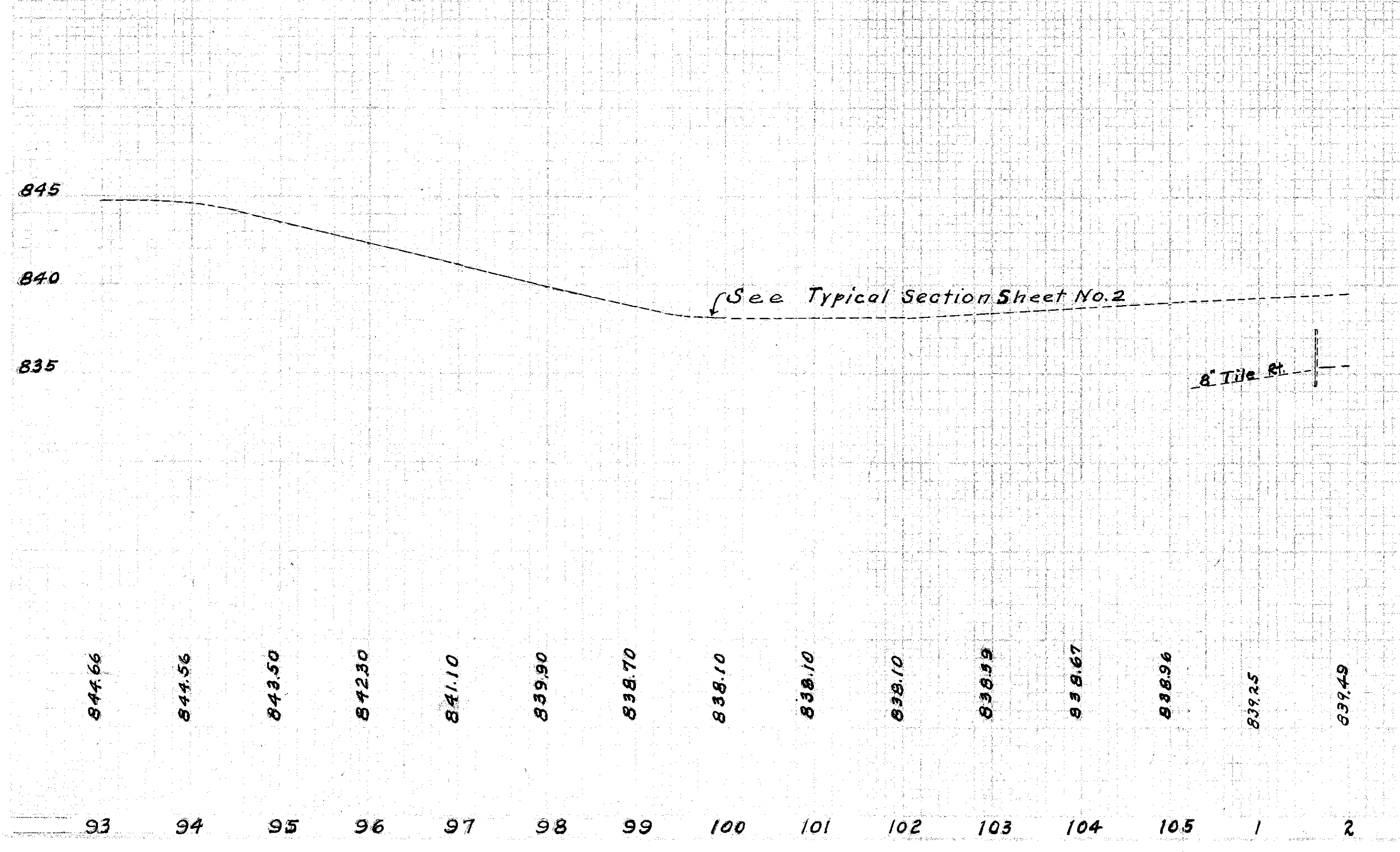
**Drives "A"**

Ref. No.	Station From	To	Side	I-117 Cu. Yds.
10-A	93+80		Rt.	0.5
11-A	94+95		Rt.	0.5
12-A	95+20		Lt.	0.5
Rural Total				1.5



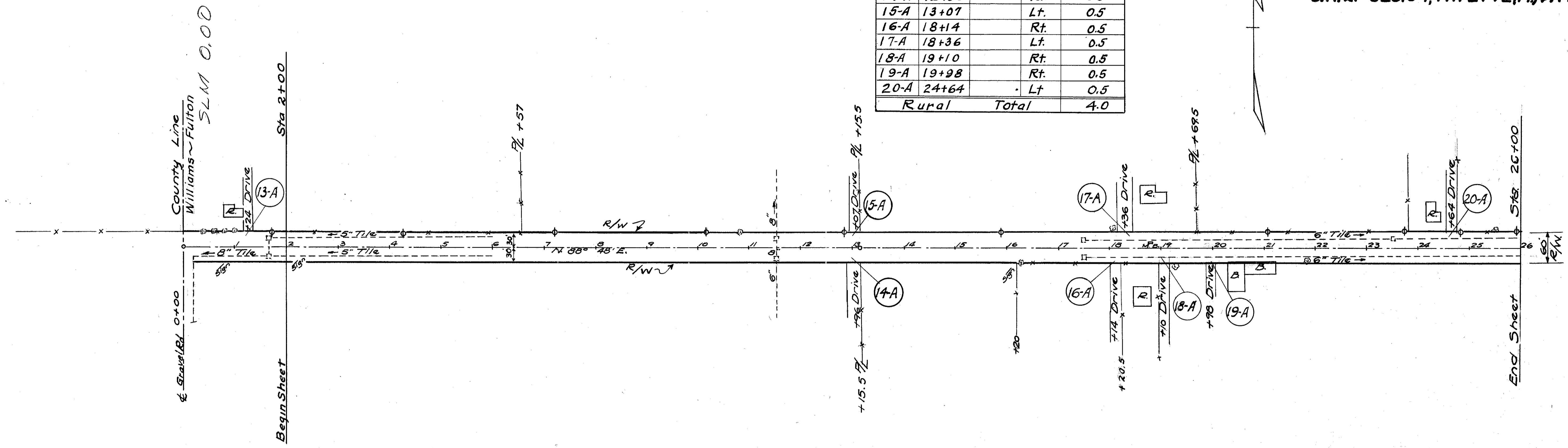
BM. Spk. 36' Maple  
 24' Right Sta. 93+61  
 Elevation 846.40

BM. Spk. Power Pole  
 30' Left Sta 1+67 Sec. S-1  
 Elevation 840.85



WILLIAMS & FULTON COUNTY  
 S.H. 21 SEC. ALVORDTON (PA) & R  
 S.H. 307 SEC. F (PT.)  
 S.H. 21 SEC. S-1, FAYETTE (PA) & K-2

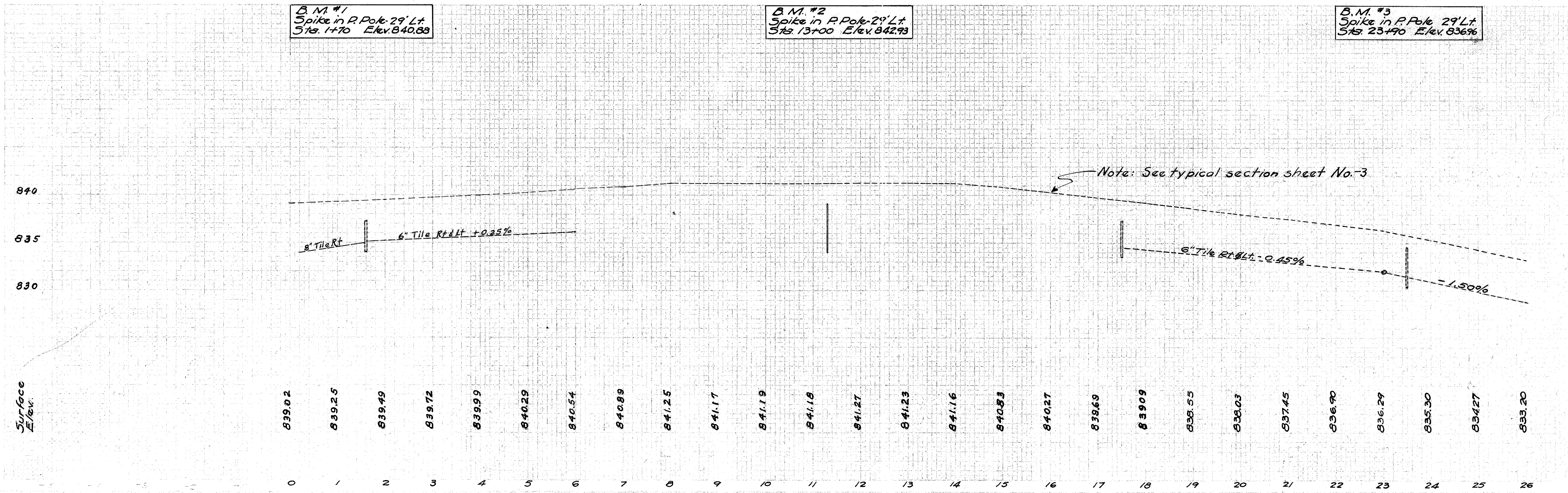
Drives "A"				
Ref No	Station FROM	TO	Side	I-117 Cu. Yds.
13-A	1+24		Lt.	0.5
14-A	12+96		Rt.	0.5
15-A	13+07		Lt.	0.5
16-A	18+14		Rt.	0.5
17-A	18+36		Lt.	0.5
18-A	19+10		Rt.	0.5
19-A	19+98		Rt.	0.5
20-A	24+64		Lt.	0.5
Rural Total				4.0



B.M. #1  
 Spike in P. Pole-29' Lt.  
 Sta. 1+70 Elev. 840.88

B.M. #2  
 Spike in P. Pole-29' Lt.  
 Sta. 13+00 Elev. 842.93

B.M. #3  
 Spike in P. Pole-29' Lt.  
 Sta. 23+90 Elev. 836.96



WILLIAMS & FULTON COUNTY  
 S.H. 21, SEC. ALVORDTON (Pt.) #R  
 S.H. 307 SEC. F (Pt.)  
 S.H. 21, SEC. S-1, FAYETTE (Pt.) #K-2

Sec. Cor. Iron Pin  
 Sta 52+62.7

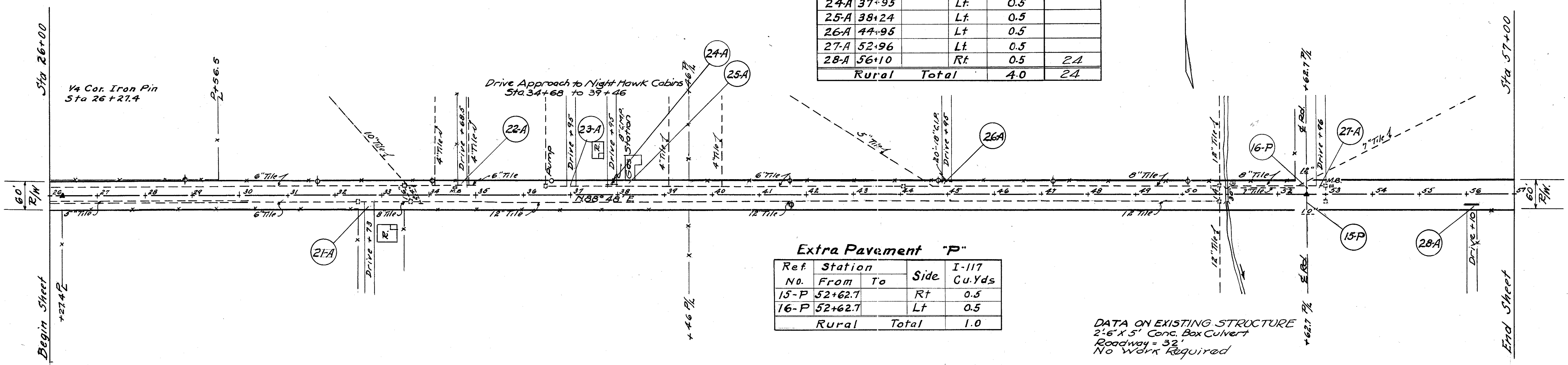
**Drives "A"**

Ref No	Station		Side	I-117 Cu. Yds.	I-1, 12" Pipe for Drive Lin. Ft.
	From	To			
21-A	32+73		Rt.	0.5	
22-A	34+68.5		Lt.	0.5	
23-A	36+95		Lt.	0.5	
24-A	37+95		Lt.	0.5	
25-A	38+24		Lt.	0.5	
26-A	44+95		Lt.	0.5	
27-A	52+96		Lt.	0.5	
28-A	56+10		Rt.	0.5	2A
Rural Total				4.0	24

**Extra Pavement "P"**

Ref No	Station		Side	I-117 Cu. Yds.
	From	To		
15-P	52+62.7		Rt.	0.5
16-P	52+62.7		Lt.	0.5
Rural Total				1.0

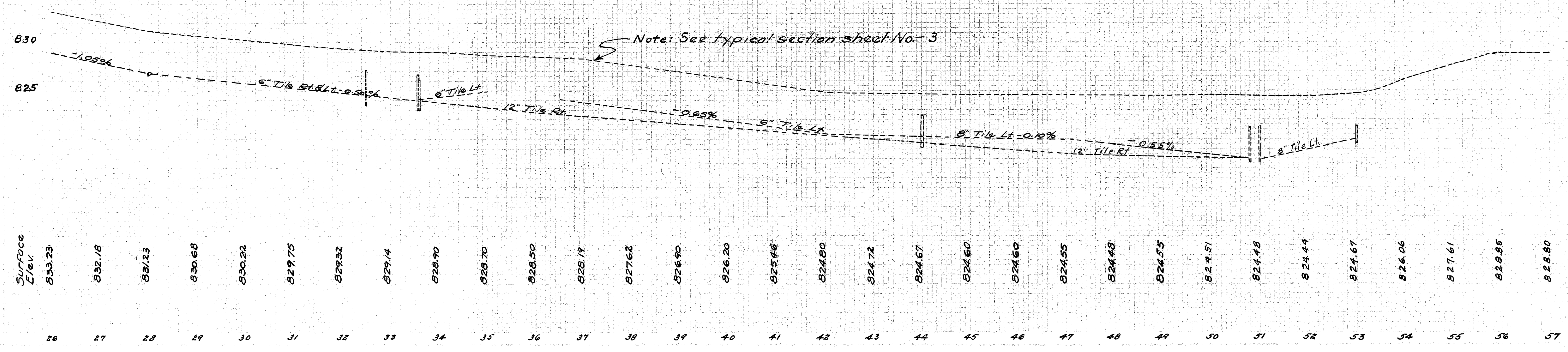
DATA ON EXISTING STRUCTURE  
 2'-6" X 5' Conc. Box Culvert  
 Roadway = 32'  
 No work Required



B.M. #4  
 Spike in P. Pole 29' Lt.  
 Sta. 34+00 Elev. 830.29

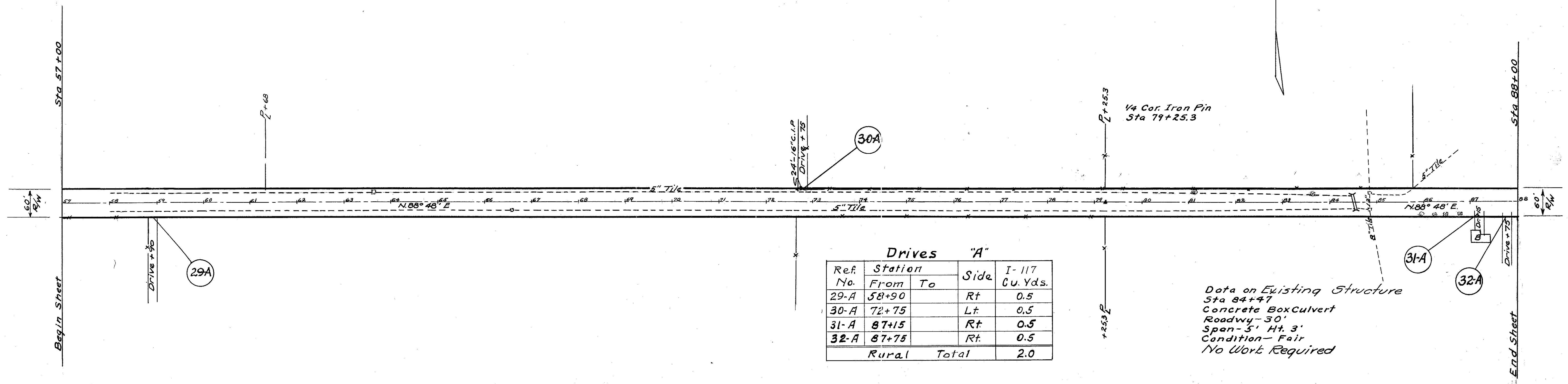
B.M. #5  
 Spike in T. Pole 29' Rt.  
 Sta. 44+80 Elev. 823.82

B.M. #6  
 Spike in T. Pole 29' Rt.  
 Sta. 56+06 Elev. 822.21



Station	Surface Elev.
26	833.23
27	832.18
28	831.33
29	830.68
30	830.22
31	829.75
32	829.32
33	829.14
34	828.90
35	828.70
36	828.50
37	828.19
38	827.62
39	826.90
40	826.20
41	825.46
42	824.80
43	824.72
44	824.67
45	824.60
46	824.60
47	824.55
48	824.48
49	824.55
50	824.51
51	824.48
52	824.44
53	824.67
54	826.06
55	827.61
56	828.85
57	828.80

10 OHIO 1944 22  
 WILLIAMS & FULTON COUNTY  
 S.H. 21, SEC. 2, VORDTON (Pt) # R  
 S.H. 307 SEC. F (Pt)  
 S.H. 21, SEC. S-1, FAYETTE (Pt) # K-2



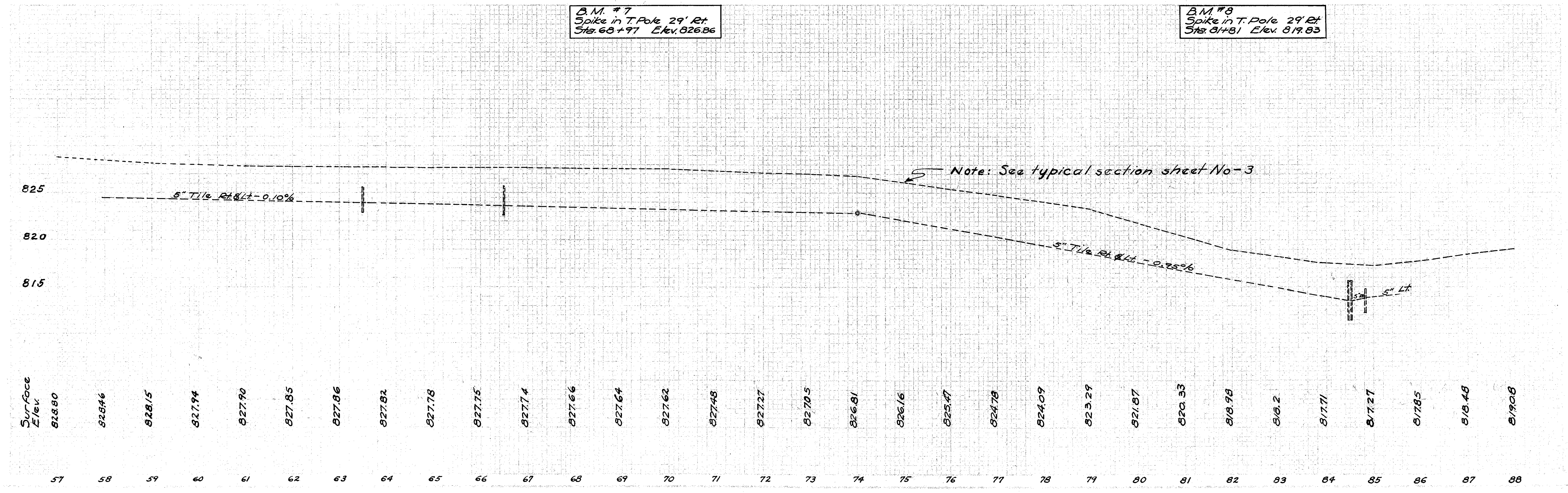
**Drives "A"**

Ref. No.	Station From	To	Side	I-117 Cu. Yds.
29-A	58+90		Rt.	0.5
30-A	72+75		Lt.	0.5
31-A	87+15		Rt.	0.5
32-A	87+75		Rt.	0.5
Rural Total				2.0

Data on Existing Structure  
 Sta 84+47  
 Concrete Box Culvert  
 Roadwy-30'  
 Span-5' Ht. 3'  
 Condition-Fair  
 No Work Required

B.M. #7  
 Spike in T. Pole 29' Rt.  
 Sta. 68+97 Elev. 826.86

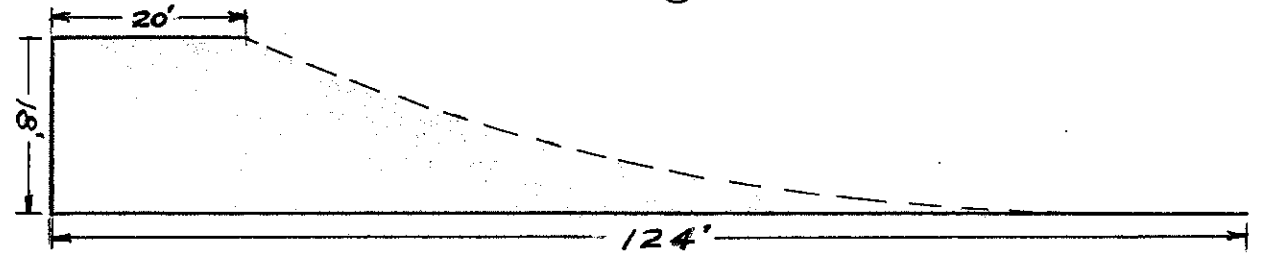
B.M. #8  
 Spike in T. Pole 29' Rt.  
 Sta. 81+81 Elev. 819.83



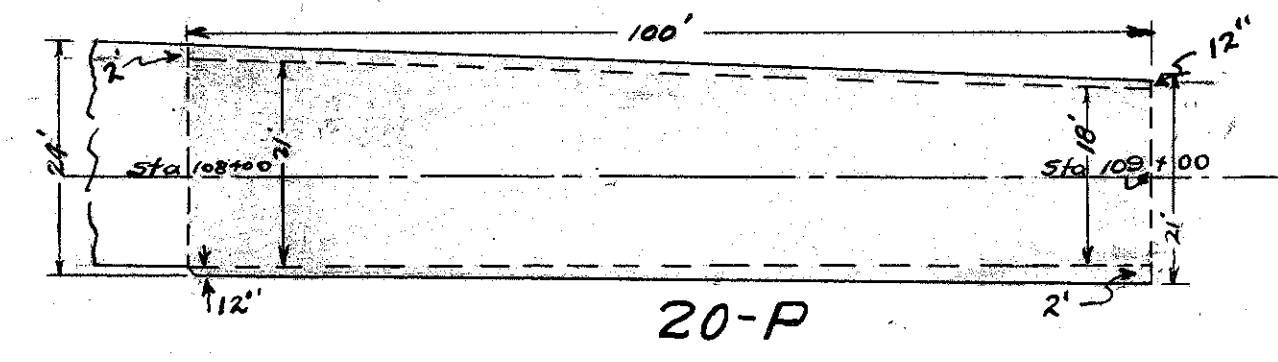
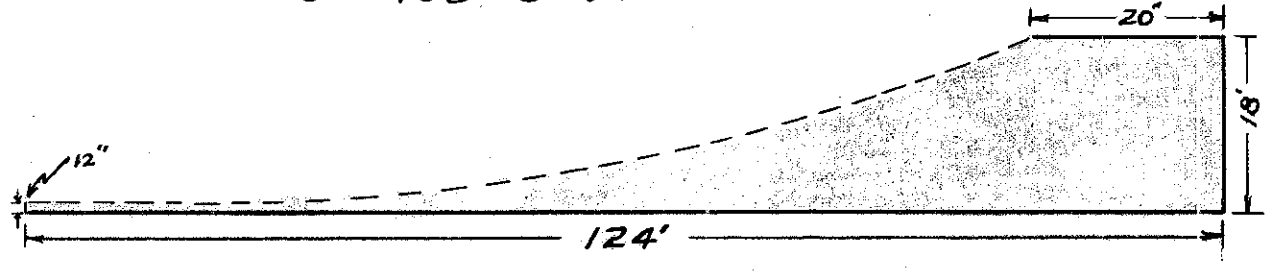


WILLIAMS & FULTON COUNTY  
 S.H. 21, SEC. ALVORDTON (Pt.) & R  
 S.H. 307 SEC. F (Pt.)  
 S.H. 21, SEC. S-1, FAYETTE (Pt.) & K-2

DETAIL OF 19-P  
 Sta 108+00



DETAIL OF 17-P  
 Sta 103+30.4



Detail of merging edge of pav't widening with edge of existing pav't for surface course from left to right Sta. 108+00 to Sta. 109+00

CURVE DATA  
 $\Delta = 89^\circ 17'$   
 $D = 19^\circ$   
 $R = 301.55$   
 $T = 297.81$   
 $L = 469.9$   
 Extra Pav't  
 235.2 Sq. Yds.

Extra Pavement "P"

Ref. No.	Station From	Station To	Side	T-35 1 1/2" Surface Course Sq. Yds.	B-35 1 1/2" Minimum Leveling Course Sq. Yds.	B-35 3" Base Course Sq. Yds.	I-20 5" Insulation Course Sq. Yds.	T-30 Prime Coat Sq. Yds.	E-10 Sealing Edges Lineal Ft.
17-P	103+30	104+50	Rt.	144.0	122.0			144.0	
18-P	102+30.4	109+00.3	Lt.	235.2	235.2			235.2	
19-P	106+80	108+00.3	Rt.	149.8	127.3			149.8	
20-P	108+00	109+00	Transition	250.0	250.0	39.0	50.0	217.0	200.0
Rural Total				779.0	734.5	39.0	50.0	746.0	200.0

Station 102+70 to 103+30 Rt.  
 Add 5 Cu. Yds. B-35  
 leveling course to  
 improve transition at  
 curve

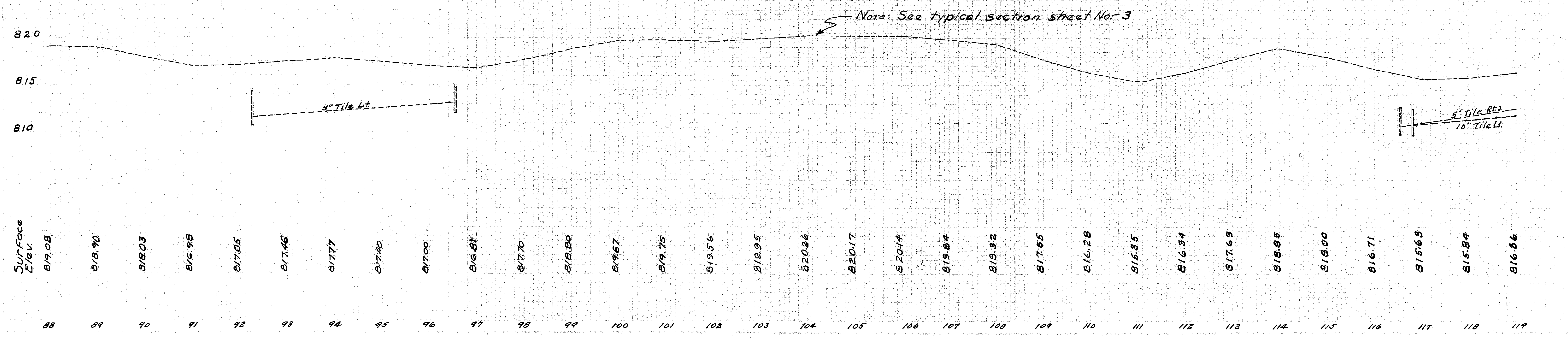
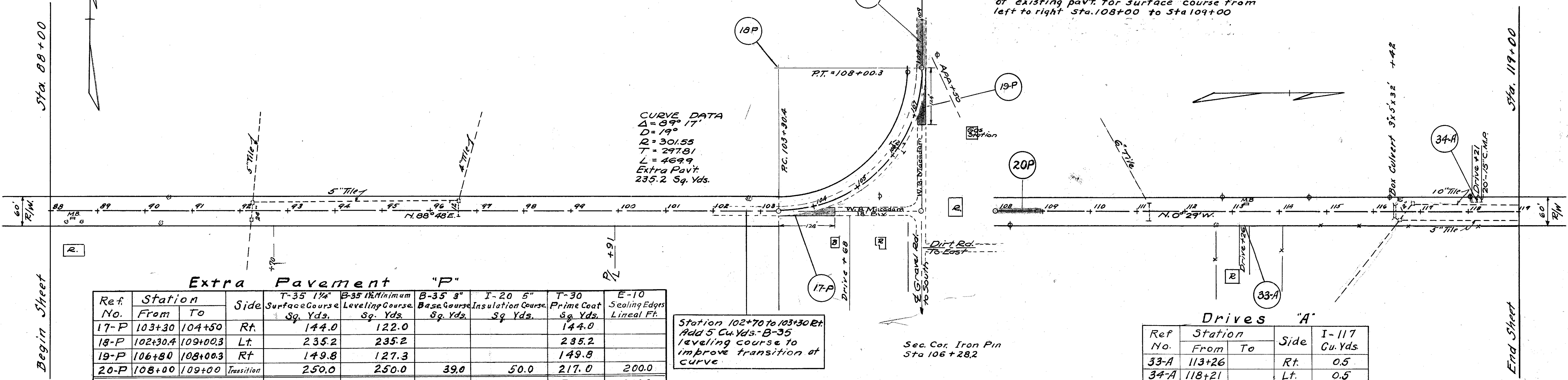
Drives "A"

Ref. No.	Station From	Station To	Side	I-117 Cu. Yds.
33-A	113+26		Rt.	0.5
34-A	118+21		Lt.	0.5
Rural Total				1.0

B.M. #9  
 Spike in T. Pole 29' Rt.  
 Sta. 92+90 Elev. 816.78

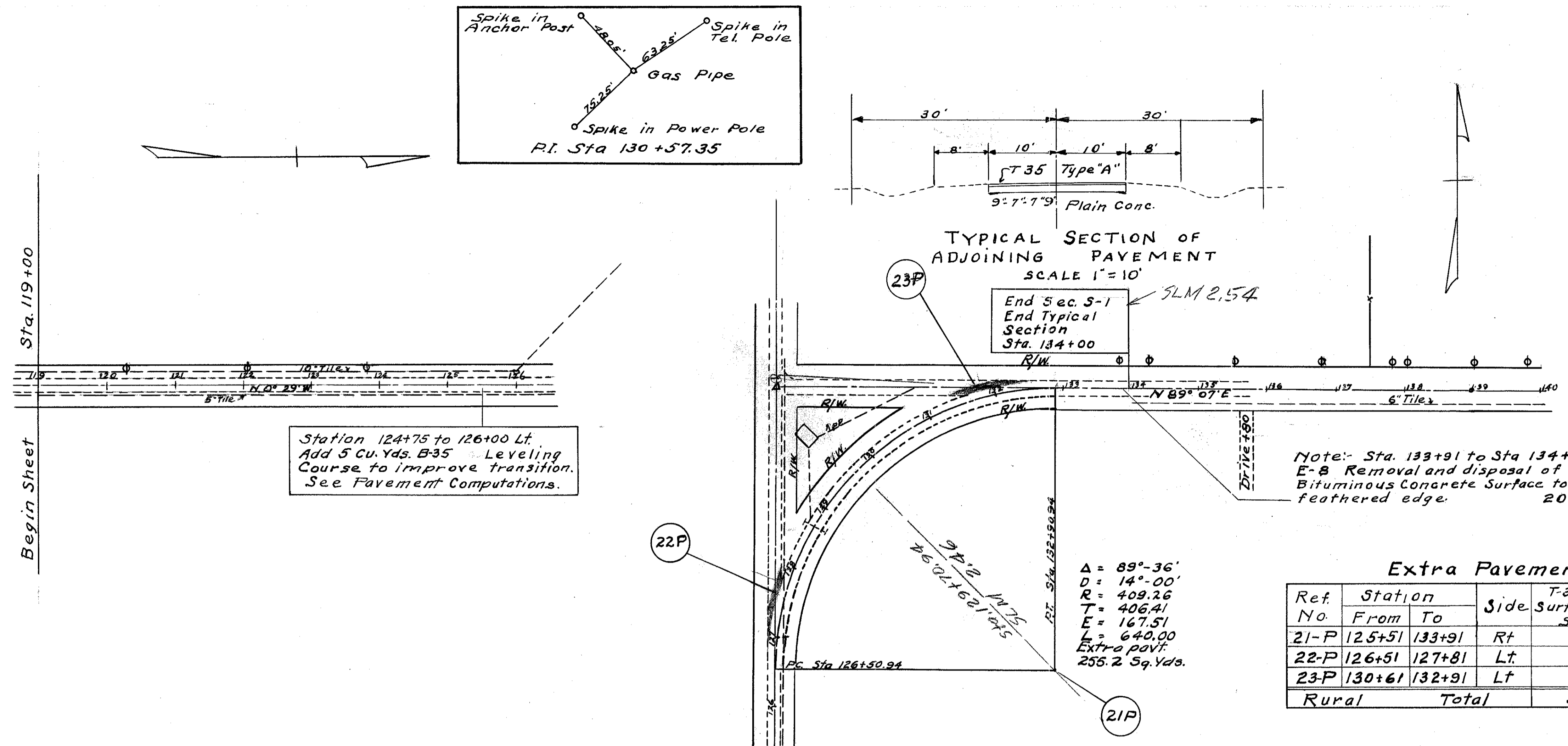
B.M. #10  
 Spike in T. Pole 70' So.  
 Sta. 105+00 Elev. 818.23

B.M. #11  
 Sp in P. Pole 29' Lt.  
 Sta. 114+70 Elev. 817.90



Station	Surface Elev.
88	819.08
89	818.90
90	818.03
91	816.98
92	817.05
93	817.46
94	817.77
95	817.40
96	817.00
97	816.81
98	817.70
99	818.80
100	819.67
101	819.75
102	819.56
103	819.95
104	820.26
105	820.17
106	820.14
107	819.84
108	819.32
109	817.55
110	816.28
111	815.35
112	816.34
113	817.69
114	818.88
115	818.00
116	816.71
117	815.69
118	815.84
119	816.86

10 OHIO 12  
1944 22  
WILLIAMS & FULTON COUNTY  
S.H. 21 SEC. ALVORDTON (Pt) & R  
S.H. 307 SEC. F (Pt.)  
S.H. 21 SEC. S-1, FAYETTE (Pt) & K-2



Station 124+75 to 126+00 Lt.  
Add 5 Cu. Yds. B-35 Leveling  
Course to improve transition.  
See Pavement Computations.

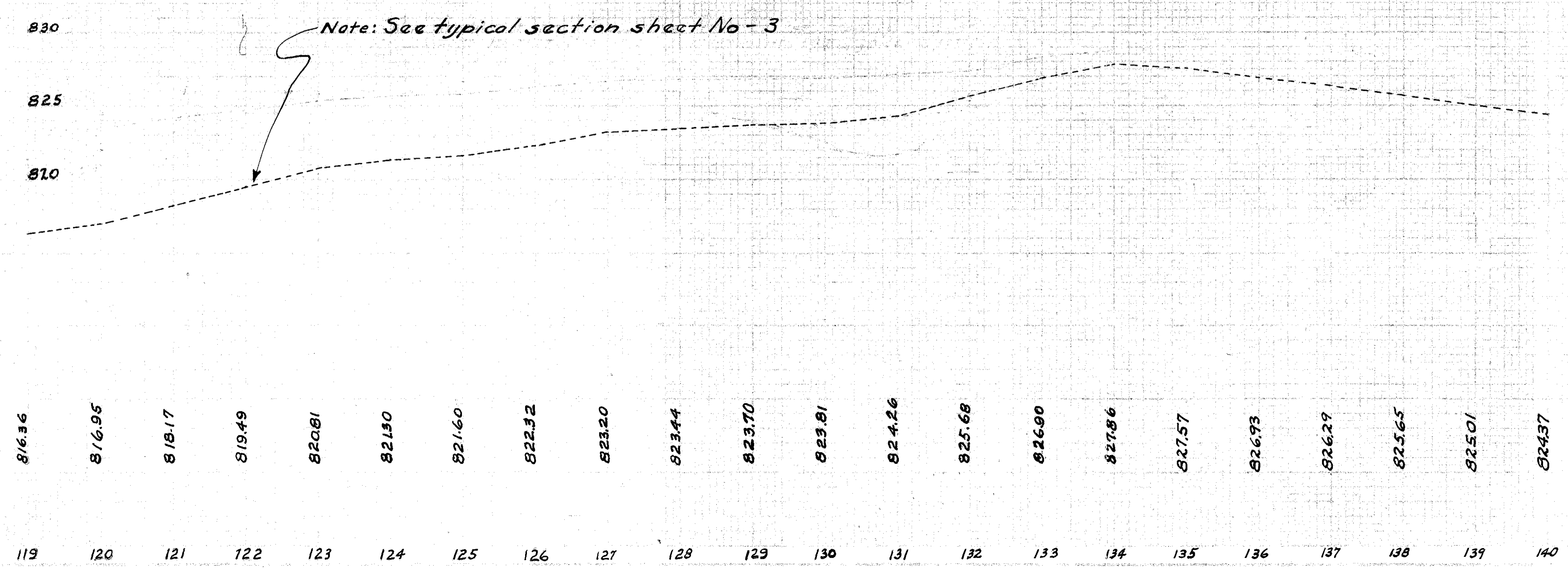
$\Delta = 89^{\circ}-36'$   
 $D = 14^{\circ}-00'$   
 $R = 409.26$   
 $T = 406.41$   
 $E = 167.51$   
 $L = 640.00$   
Extra Pavt.  
255.2 Sq. Yds.

Extra Pavement "P"

Ref. No.	Station		Side	T-35 1 1/4"	B-35 1 1/2" Minimum	T-30
	From	To		Surface Course	Leveling Course	Prime Coat
				Sq. Yds.	Sq. Yds.	Sq. Yds.
21-P	125+51	133+91	Rt	255.2	255.2	255.2
22-P	126+51	127+81	Lt.	144.4	72.2	
23-P	130+61	132+91	Lt.	144.4	72.2	
Rural Total				544.0	399.6	255.2

B.M. Spike Hickory  
50' Right Sta. 125+00  
Elevation 822.66

B.M. Spike Power Pole  
65' West Sta. 128+30  
Elevation 822.91



816.36 816.95 818.17 819.49 820.81 821.50 821.60 822.32 823.20 823.44 823.70 823.81 824.26 825.68 826.90 827.86 827.57 826.93 826.29 825.65 825.01 824.37

119 120 121 122 123 124 125 126 127 128 129 130 131 132 133 134 135 136 137 138 139 140

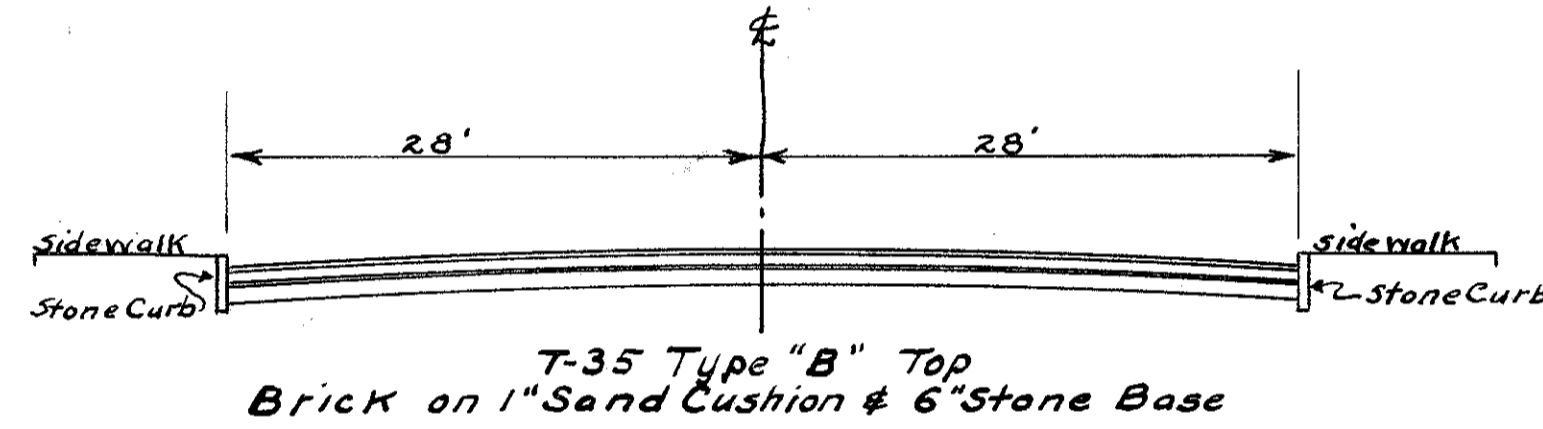
WILLIAMS & FULTON COUNTY  
S.H. 21 SEC. ALVORDTON (Pt.) # R  
S.H. 307 SEC. F (Pt.)  
S.H. 21 SEC. S-1, FAYETTE (Pt.) # K-2

**Drives "A"**

Ref. No.	Station From	Station To	Side	T-35 1/2" Surface Course Sq. Yds.	T-30 Prime Coat Sq. Yds.	I-117 Gu. Yds.
35-A	225+32	226+32	Lt.	33.3	33.3	
36-A	225+50	226+22	Rt.	24.0	24.0	
37-A	226+69		Rt.	10.1	10.1	
38-A	230+10		Rt.	7.0	7.0	
39-A	230+40		Lt.	7.0	7.0	
40-A	230+76		Rt.	7.0	7.0	
41-A	231+48	232+55	Lt.	39.0	39.0	
42-A	232+19		Rt.	7.0	7.0	
43-A	232+85		Lt.	7.0	7.0	
44-A	233+70		Rt.	7.0	7.0	
45-A	234+20		Lt.	11.0	11.0	
46-A	233+78	234+93	Rt.			1.0
47-A	235+77		Lt.	7.0	7.0	
48-A	235+65	236+43	Rt.			0.5
49-A	236+93		Lt.	7.0	7.0	
50-A	237+19	237+75	Rt.			0.5
<b>Municipal Total</b>				<b>173.4</b>	<b>173.4</b>	<b>2.0</b>

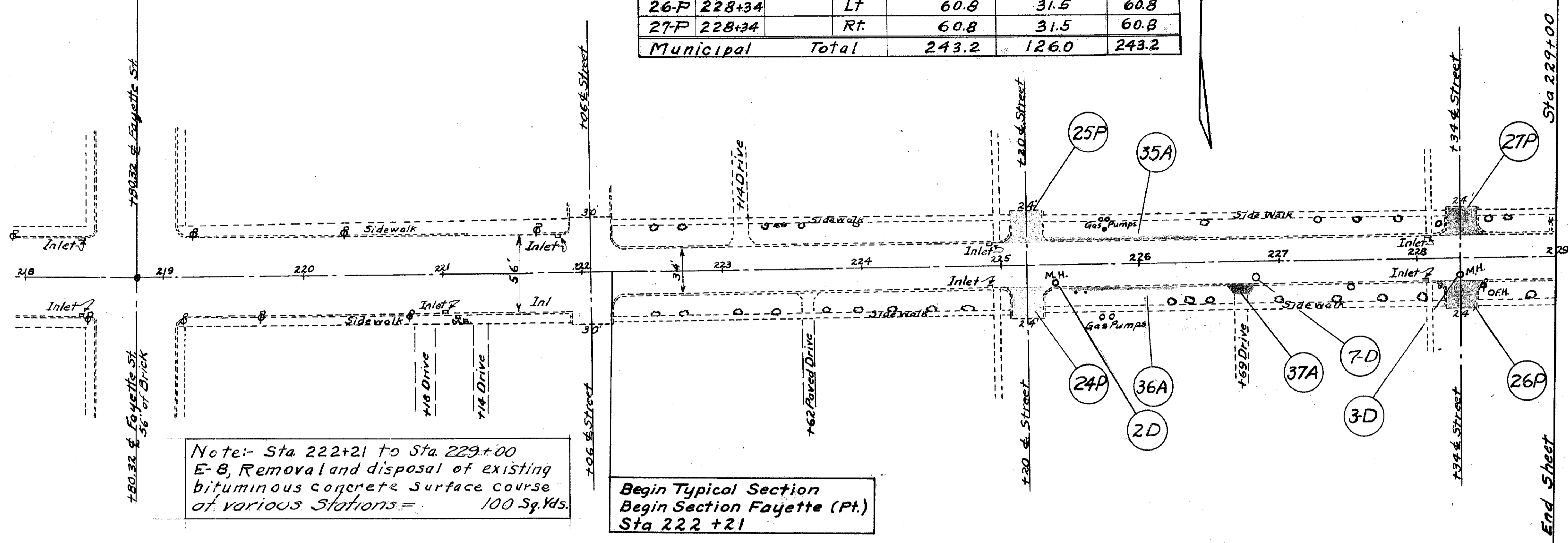
See Sheet No. 14 for these items.

Note: A sufficient amount of extra leveling material (as set up in Pavement Computations, Sheet No. 22) shall be used to properly build up low spots in drives.



TYPICAL SECTION OF ADJOINING PAVEMENT  
SCALE 1" = 10'

Sec. Corner Iron Pin  
Sta. 218+80.32



**Extra Pavement "P"**

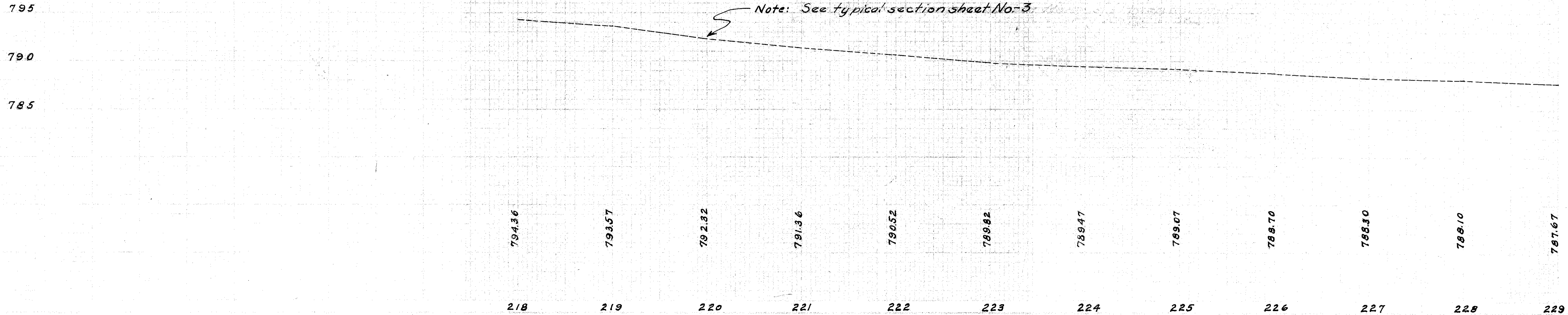
Ref. No.	Station From	Station To	Side	T-35 1/2" Surface Course Sq. Yds.	B-35 3/4" Minimum Leveling Course Sq. Yds.	T-30 Prime Coat Sq. Yds.
24-P	225+20		Rt.	60.8	31.5	60.8
25-P	225+20		Lt.	60.8	31.5	60.8
26-P	228+34		Lt.	60.8	31.5	60.8
27-P	228+34		Rt.	60.8	31.5	60.8
<b>Municipal Total</b>				<b>243.2</b>	<b>126.0</b>	<b>243.2</b>

Note: Sta 222+21 to Sta. 229+00 E-8, Removal and disposal of existing bituminous concrete surface course at various Stations = 100 Sq. Yds.

Begin Typical Section  
Begin Section Fayette (Pt.)  
Sta 222+21

B.M. @ on N.W. Cor. Lamp Post Base  
29' Right Sta. 221+85  
Elevation 790.60

Ref. No.	Station	Side	I-8 Adjust Man Hole Tops to Grade Each	Remarks
2-D	225+40	Rt.	1	
3-D	228+34	Rt.	1	
7-D	226+85	Rt.	1	
<b>Municipal Total</b>			<b>3</b>	



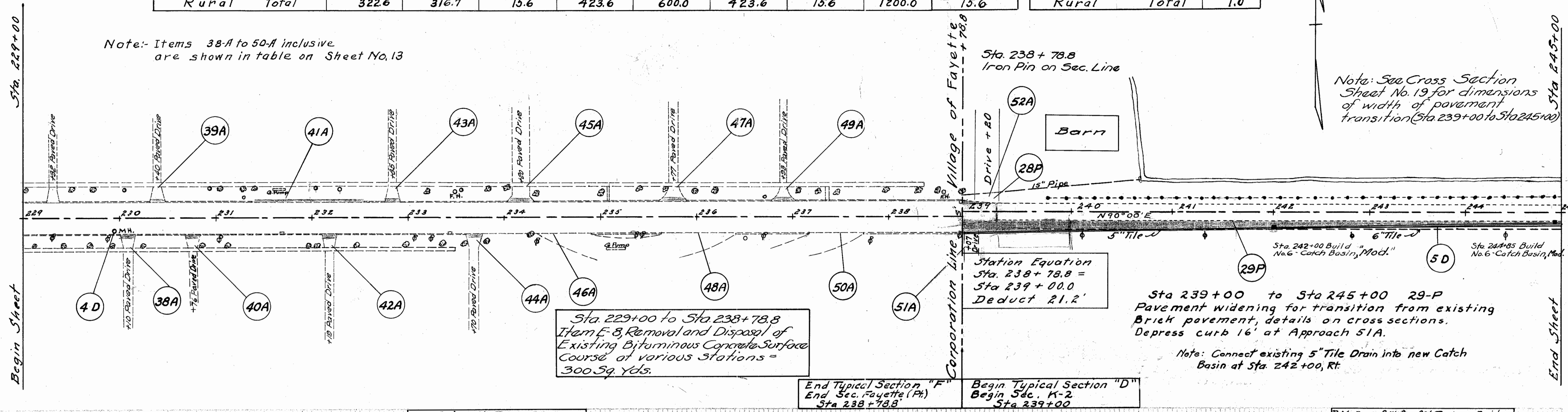
Ref. No.	Station		Side	F-35 1/4" Surface Course	B-35 1/2" Minimum Leveling Course	B-35 1" Minimum Leveling Course	B-35 3" Base Course	I-12 Type 2 Curb & Gutter	I-20 Insulation Course	T-30 Prime Coat	E-10 Sealing Edges	B-35 1/2" Leveling Course
	From	To		Sq. Yds.	Sq. Yds.	Sq. Yds.	Sq. Yds.	Lineal Ft.	Sq. Yds.	Sq. Yds.	Lineal Ft.	Sq. Yds.
28-P	239+00	239+35	Lt.	5.9		5.9				5.9		5.9
29-P	239+00	245+00	Rt.	316.7	316.7	9.7	423.6	600.0	423.6	9.7	1200.0	9.7
	Rural Total			322.6	316.7	15.6	423.6	600.0	423.6	15.6	1200.0	15.6

Ref. No.	Station		Side	I-117
	From	To		Cu. Yds.
51-A	239+07		Rt.	0.5
52-A	239+20		Lt.	0.5
	Rural Total			1.0

WILLIAMS & FULTON COUNTY  
 S.H. 21 SEC. ALYORDTON (Pt) R  
 S.H. 307 SEC. F (Pt.)  
 S.H. 21, SEC. S-1, FAYETTE (Pt) & K-2

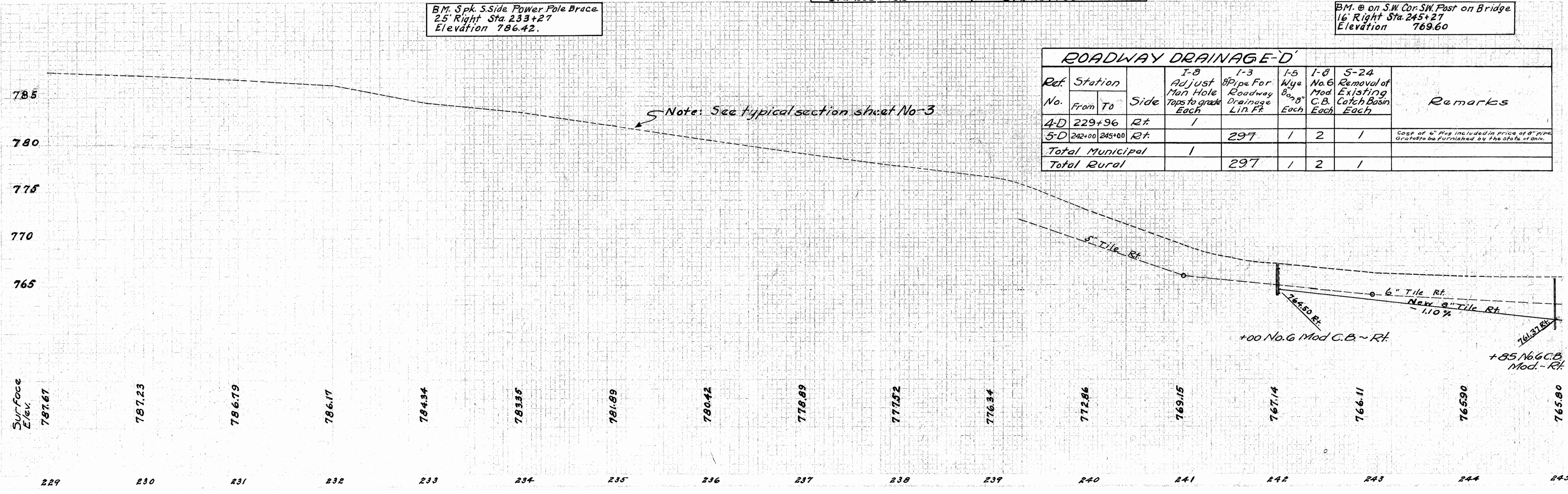
Note: Items 38-A to 50-A inclusive are shown in table on Sheet No. 13

Note: See Cross Section Sheet No. 19 for dimensions of width of pavement transition (Sta. 239+00 to Sta. 245+00)



B.M. Spk. S. Side Power Pole Brace  
 25' Right Sta. 233+27  
 Elevation 786.42.

B.M. @ on S.W. Cor. S.W. Past on Bridge  
 16' Right Sta. 245+27  
 Elevation 769.60

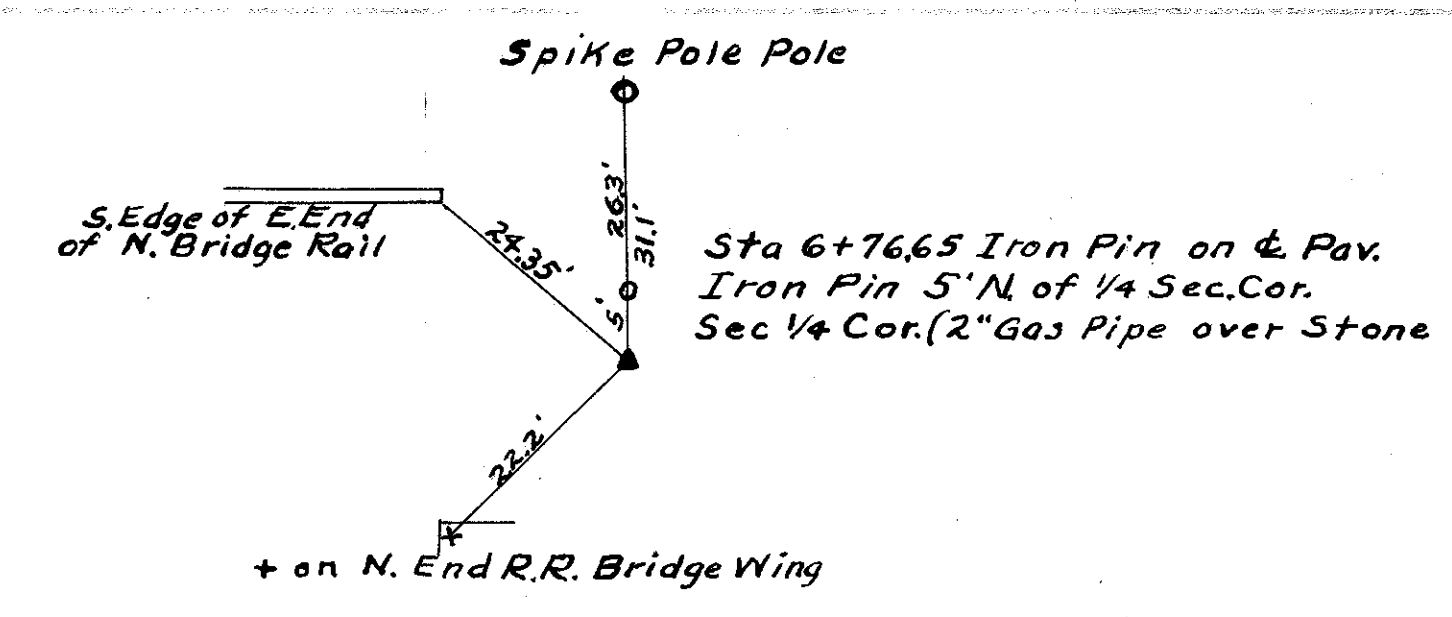
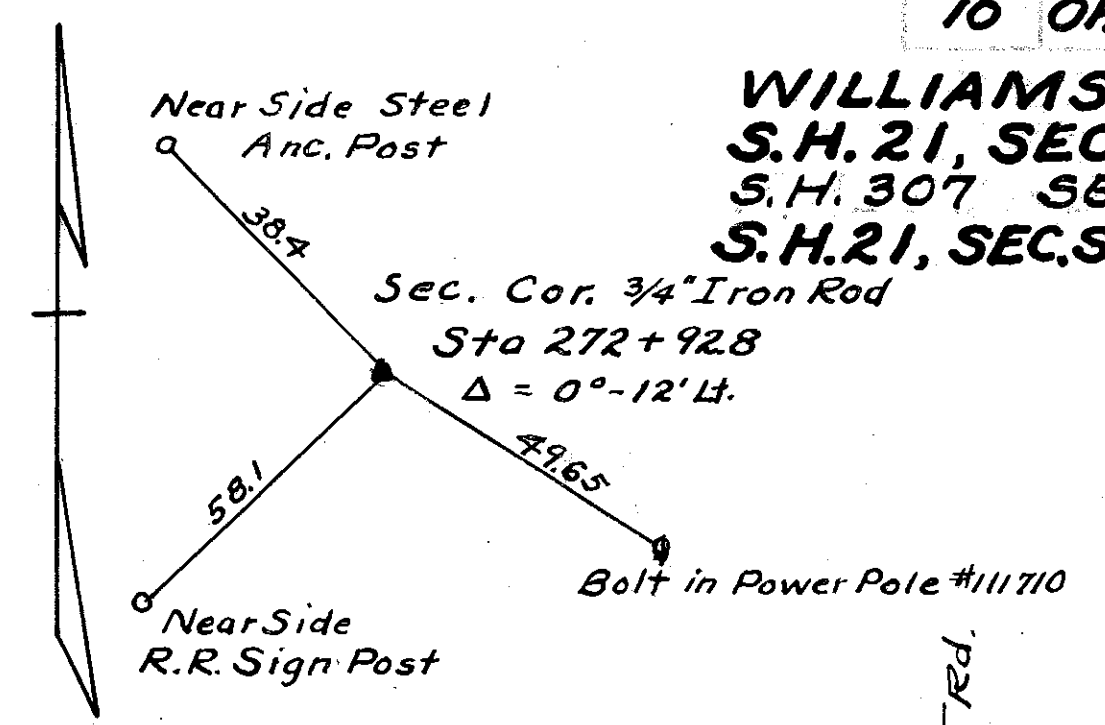


Ref. No.	Station		Side	I-8 Adjust Man Hole	I-3 8" Pipe For Roadway Drainage	I-5 Wye Boxes	I-8 No. 6 Mod. C.B.	5-24 Removal of Existing Catch Basin	Remarks
	From	To		Tops to grade	Lin. Ft.	Each	Each	Each	
4-D	229+96		Rt.	1					
5-D	242+00	245+00	Rt.		297	1	2	1	Cost of 6" pipe included in price of 8" pipe. Grates to be furnished by the State of Ohio.
	Total Municipal			1					
	Total Rural				297	1	2	1	

WILLIAMS & FULTON COUNTY  
 S.H. 21, SEC. ALVORDTON (PA) & R  
 S.H. 307 SEC. F (PT.)  
 S.H. 21, SEC. S-1, FAYETTE (PA) & M-2

### Drives 'A'

Ref. No	Station From To	Side	I-117 C.u.Yds.	T-35 1/4" Surface Course Sq. Yds.
53-A	256+43	Lt.	0.5	
54-A	257+46	Rt.	0.5	
55-A	258+68	Rt.	0.5	
56-A	258+68	Lt.	0.5	
57-A	261+88	Lt.	0.5	
58-A	264+05	Rt.	0.5	
59-A	266+15	Lt.		10.0
<b>Rural Total</b>			<b>3.0</b>	<b>10.0</b>



Sta 245+42  
 DATA ON EXIST STRUC  
 Conc. Slab Bridge  
 Span - 18'  
 Roadway - 30'  
 Condition - Fair  
 Extra Pav. = 22.2 Sq. Yds. Outside 20'  
 Note: T-35 Surface Course only is to be applied over Bridge Floor

Ref. No.	Station From To	Side	I-3 8" Pipe for Roadway Drainage Link	Rip Rap Type 'A' Grouded 59 Yds.	Remarks
G-D	245+00 245+27	Rt.	27	10	
<b>Totals</b>			<b>27</b>	<b>10</b>	

### Extra Pavement 'P'

Ref. No	Station From To	Side	T-35 1/4" Surface Course Sq. Yds.	T-30 Prime Coat Sq. Yds.	I-117 C.u.Yds.
30-P	245+42	Bridge	22.2	22.2	
31-P	259+42	Bridge	24.4	24.4	
32-P	272+92.8	Rt.			0.5
33-P	272+92.8	Lt.			0.5
<b>Rural Total</b>			<b>46.6</b>	<b>46.6</b>	<b>1.0</b>

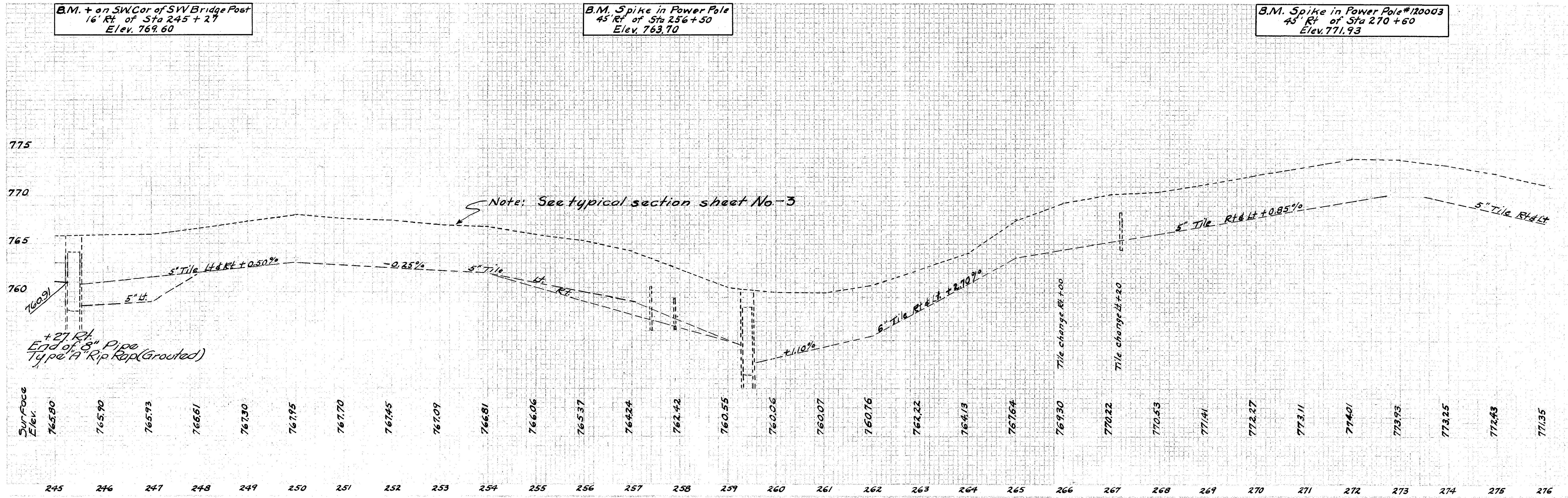
Sta 259+42  
 DATA ON EXIST STRUC.  
 Conc. Slab Bridge  
 Span - 20'  
 Roadway - 30'  
 Condition - Fair  
 Extra Pav. - 24.4 Sq. Yds. Outside 20'  
 Note: T-35 Surface Course only is to be applied over Bridge Floor.

Sta 245 + 76.65  
 Iron Pin 5' N. of 1/4 Cor.  
 Δ = 0°-08' Lt

B.M. + on SW Cor of SW Bridge Post  
 16' Rt. of Sta 245 + 27  
 Elev. 769.60

B.M. Spike in Power Pole  
 45' Rt. of Sta 256 + 50  
 Elev. 763.70

B.M. Spike in Power Pole #120003  
 45' Rt. of Sta 270 + 60  
 Elev. 771.93



245 246 247 248 249 250 251 252 253 254 255 256 257 258 259 260 261 262 263 264 265 266 267 268 269 270 271 272 273 274 275 276

WILLIAMS & FULTON COUNTY  
 S.H. 21 SEC. ALVORDTON (Pt) & R  
 S.H. 307 SEC. F (Pt.)  
 S.H. 21, SEC. S-1, FAYETTE (Pt) & K-2

Extra Pavement "P"

Ref No	Station From	Station To	Side	T-35 1/4" Surface Course Sq. Yds	B-35 1/2" Minimum Leveling Course Sq. Yds	B-35 3" Base Course Sq. Yds	T-30 Prime Coat Sq. Yds	I-20 Insulation Course Sq. Yds	E-10 Sealing Edges Linear Ft.
34-P	298+00	299+26.45		288.0	288.0	42.2	253.0	56.2	253.0
Rural	Total			288.0	288.0	42.2	253.0	56.2	253.0

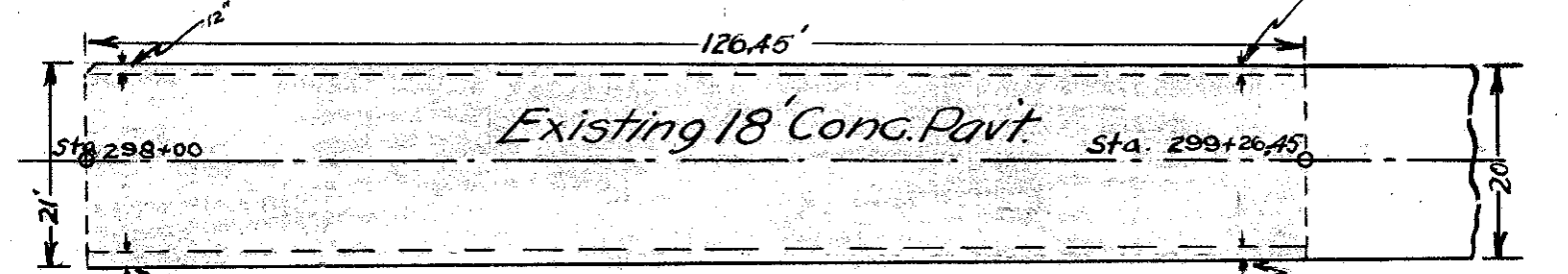
Drives "A"

Ref No	Station From	Station To	Side	I-117 Cu. Yds.
60-A	276+00		Lt.	0.5
61-A	279+13		Rt.	0.5
62-A	292+17		Rt.	0.5
63-A	296+67		Lt.	0.5
64-A	297+35		Lt.	0.5
Rural	Total			2.5

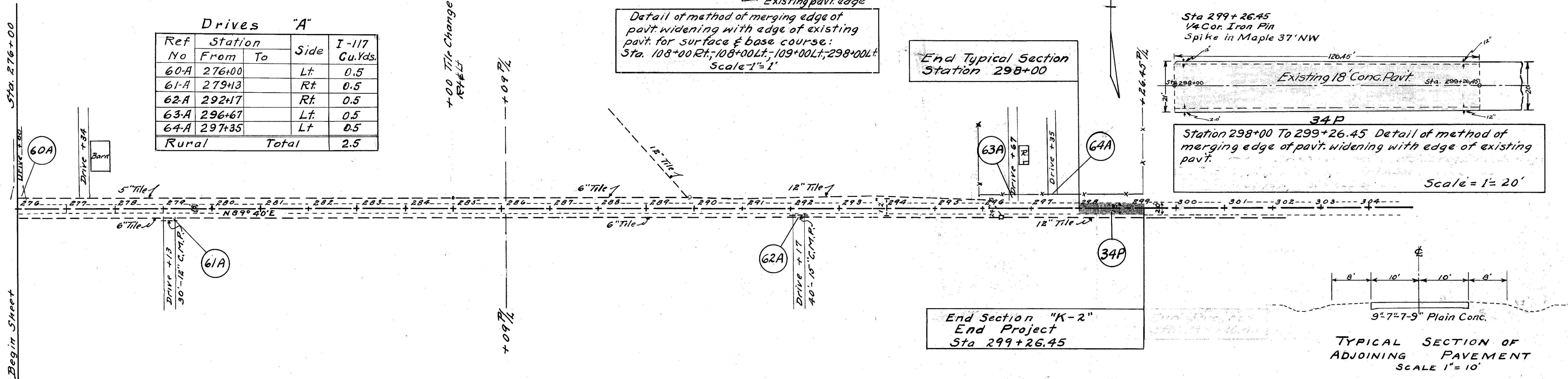
Detail of method of merging edge of pavt. widening with edge of existing pavt. for surface & base course:  
 Sta. 108+00 Rt.; 108+00 Lt.; 109+00 Lt.; 298+00 Lt.  
 Scale 1"=1'

End Typical Section Station 298+00

Sta 299+26.45  
 1/4 Cor. Iron Pin  
 Spike in Maple 37' NW



Station 298+00 To 299+26.45 Detail of method of merging edge of pavt. widening with edge of existing pavt.  
 Scale = 1"=20'



B.M. Spike in Power Pole  
 45' Rt. of Sta 284+84  
 Elev. 763.33

B.M. Spike in S.W. Root 36" Maple  
 26' Lt. of Sta 299+00  
 Elev. 754.92

