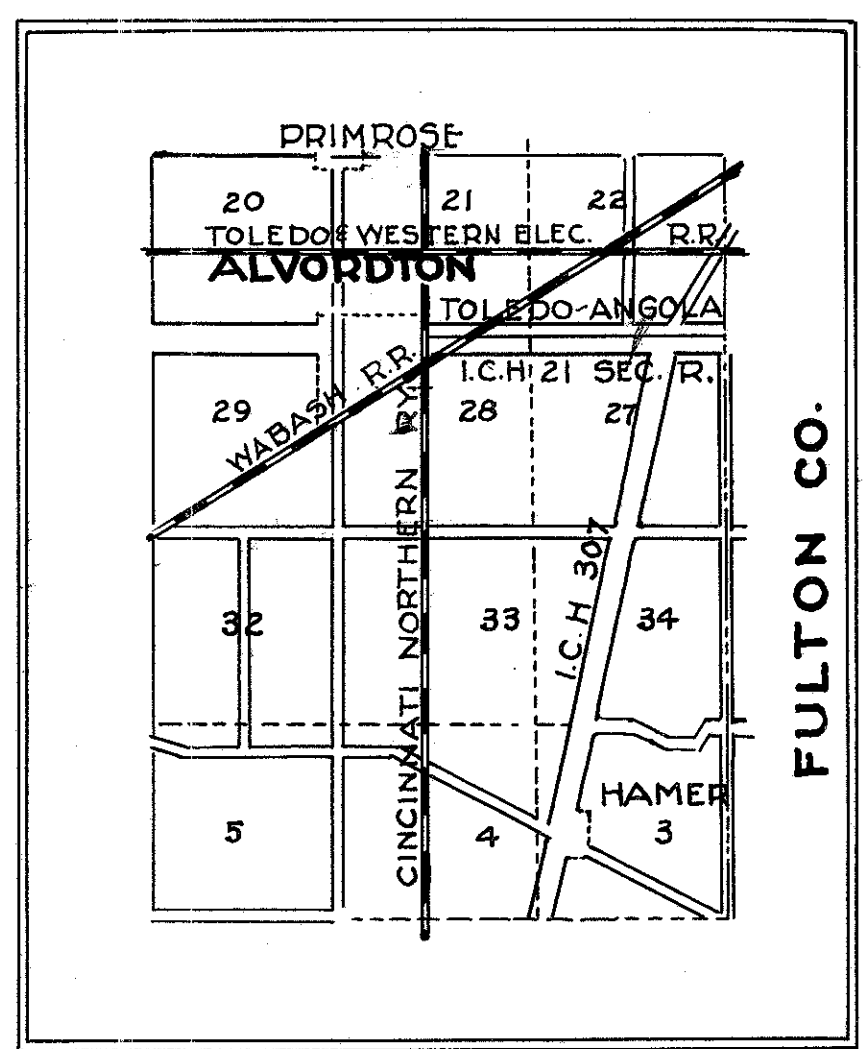


R/W PLAN
S.H. 21 SEC. R
WILLIAMS COUNTY

*R/W checked
easements obtained as shown
J.P.
3/28/44*

STATE OF OHIO DEPARTMENT OF HIGHWAYS RIGHT OF WAY PLANS TOLEDO-ANGOLA ROAD S.H. 21 SEC R WILLIAMS COUNTY MILLCREEK TOWNSHIP

LOCATION PLAN



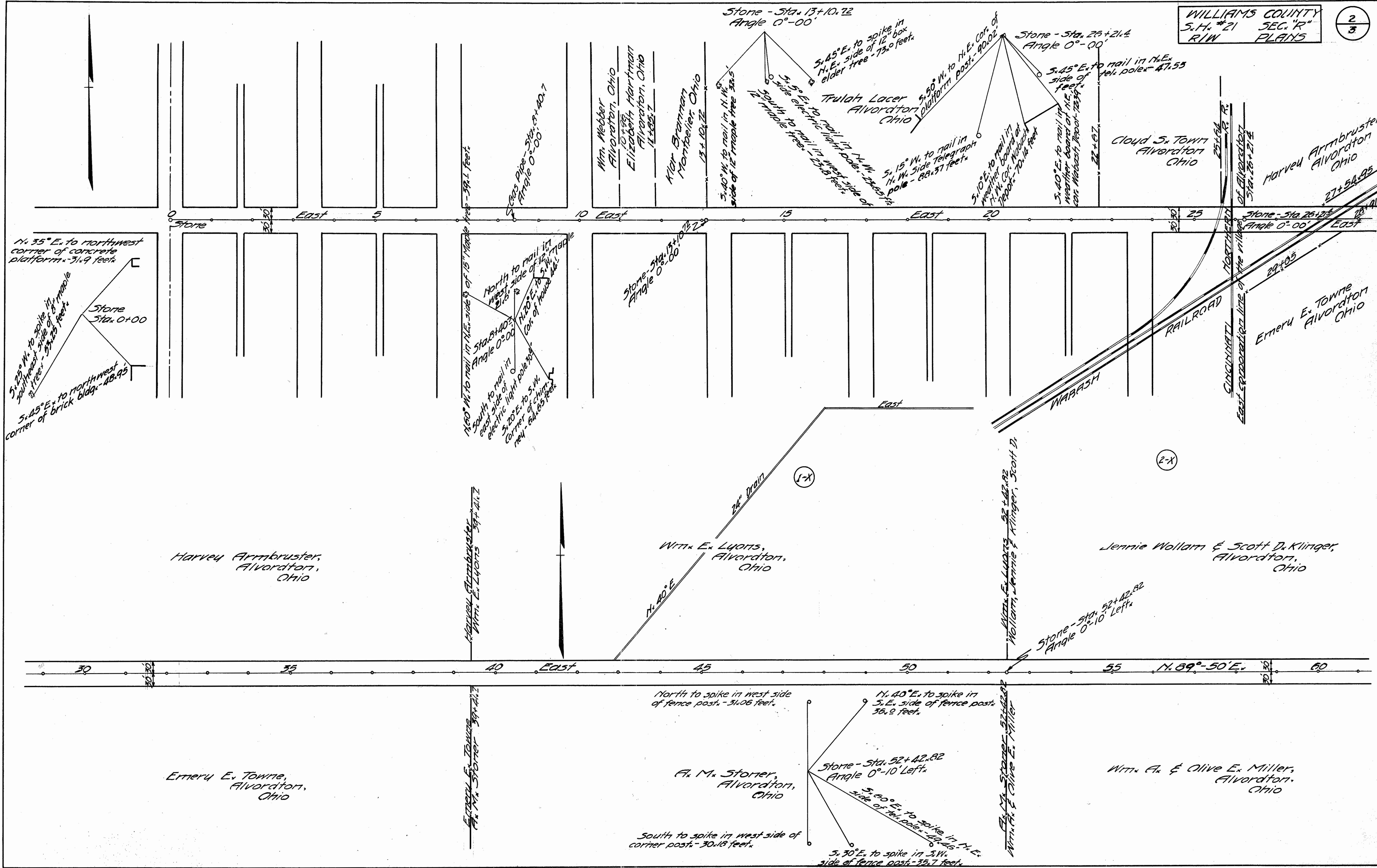
Scale in Miles
IMPROVED ROADS
PROPOSED IMPROVEMENT

Scanned
July 1997

R7020 #9 H-5

Drawn
July 1947

WILLIAMS COUNTY
S.H. #21 SEC. "R"
R/W PLANS



N. 35° E. to northwest corner of concrete platform - 31.9 feet.
 S. 25° W. to spike in southeast side of 8" maple tree - 53.25 feet.
 Stone Sta. 0+00
 S. 45° E. to northwest corner of brick bldg. - 48.95

N. 60° W. to nail in N.E. side of 15" maple tree - 39.1 feet.
 Stone Sta. 13+10.72
 Angle 0°-00'
 S. 20° E. to nail in east side of electric light pole 30' N. 20° E. to S.W. corner of chimney - 64.65 feet.

Stone Sta. 13+10.72
 Angle 0°-00'

Stone - Sta. 13+10.72
 Angle 0°-00'
 S. 45° E. to spike in N.E. side of 12" box elder tree - 73.0 feet.
 S. 30° E. to nail in N.W. side of electric light pole - 23.80 feet.
 S. 20° E. to nail in west side of 12" maple tree - 25.65 feet.
 S. 15° W. to nail in N.W. side telegraph pole - 88.37 feet.
 S. 10° E. to nail in weather board of N.E. corner of house - 70.14 feet.
 S. 40° E. to nail in weather board of N.E. corner of house - 23.94 feet.

Stone - Sta. 26+21.4
 Angle 0°-00'
 S. 45° E. to nail in N.E. side of tel. pole - 47.55 feet.
 S. 40° E. to nail in weather board of N.E. corner of house - 23.94 feet.

Stone - Sta. 26+21.4
 Angle 0°-00'
 East
 27+54.95
 29+05
 RAILROAD
 WABASH
 CINCINNATI
 East separation line of the village of Alvordton
 Stone Sta. 26+21.4
 Angle 0°-00'
 East
 Emeru E. Towne Alvordton Ohio
 Harvey Armbruster Alvordton Ohio

Harvey Armbruster,
 Alvordton,
 Ohio

Wm. E. Luots,
 Alvordton,
 Ohio

Jennie Wollam & Scott D. Klinger,
 Alvordton,
 Ohio

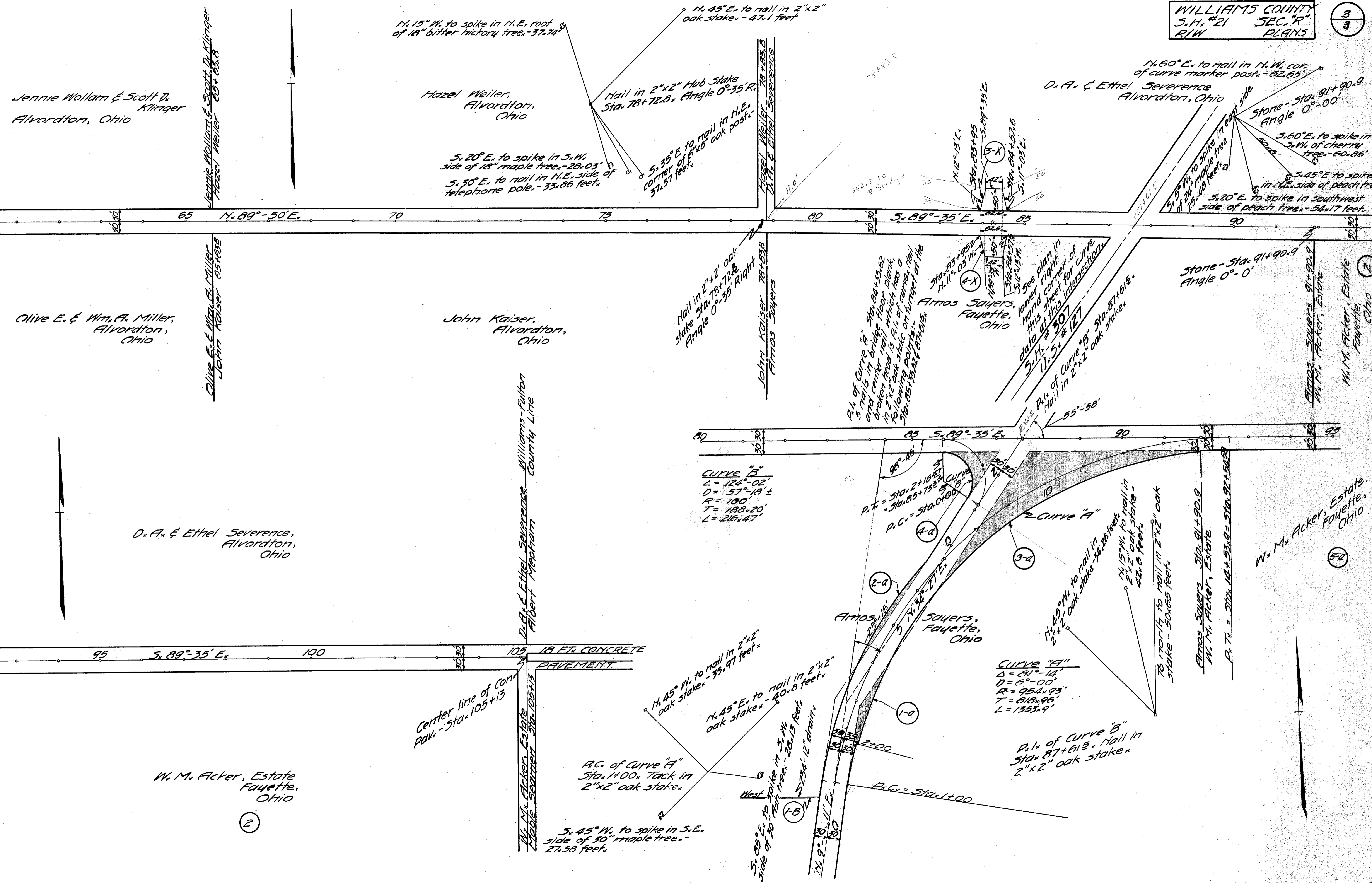
Emeru E. Towne,
 Alvordton,
 Ohio

A. M. Storer,
 Alvordton,
 Ohio

Wm. A. & Olive E. Miller,
 Alvordton,
 Ohio

Stone - Sta. 52+42.82
 Angle 0°-10' Left.
 N. 40° E. to spike in S.E. side of fence post - 36.2 feet.
 S. 60° E. to spike in N.E. side of tel. pole - 42.45 feet.
 S. 30° E. to spike in S.W. side of fence post - 35.7 feet.
 North to spike in west side of fence post - 31.06 feet.
 South to spike in west side of corner post - 30.18 feet.

Wanted
July 1997



Jennie Wallam & Scott D. Klirger
Alvordton, Ohio

Hazel Weiler,
Alvordton,
Ohio

D. A. & Ethel Severance
Alvordton, Ohio

Olive E. & Wm. A. Miller,
Alvordton,
Ohio

John Kaiser,
Alvordton,
Ohio

Atmos Sayers,
Fayette,
Ohio

D. A. & Ethel Severance,
Alvordton,
Ohio

D. A. & Ethel Severance - Fulton
Albert Neatham
Williams County Line

W. M. Acker, Estate,
Fayette,
Ohio

CURVE "B"
Δ = 124°-02'
D = 57°-18' ±
R = 100'
T = 158±20'
L = 216±47'

CURVE "A"
Δ = 81°-14'
D = 6°-00'
R = 95±93'
T = 618±96'
L = 1353±9'

P.C. of Curve "A"
Sta. 1400± Tack in
2"x2" oak stake.

P.I. of Curve "B"
Sta. 87±61± Nail in
2"x2" oak stake.

S. 45° W. to spike in S.E.
side of 30" maple tree - 27.58 feet.

18 FT. CONCRETE
PAVEMENT

Center line of Con.
Pav. - Sta. 105+13

W. M. Acker, Estate
Fayette,
Ohio

2

5A

2

2