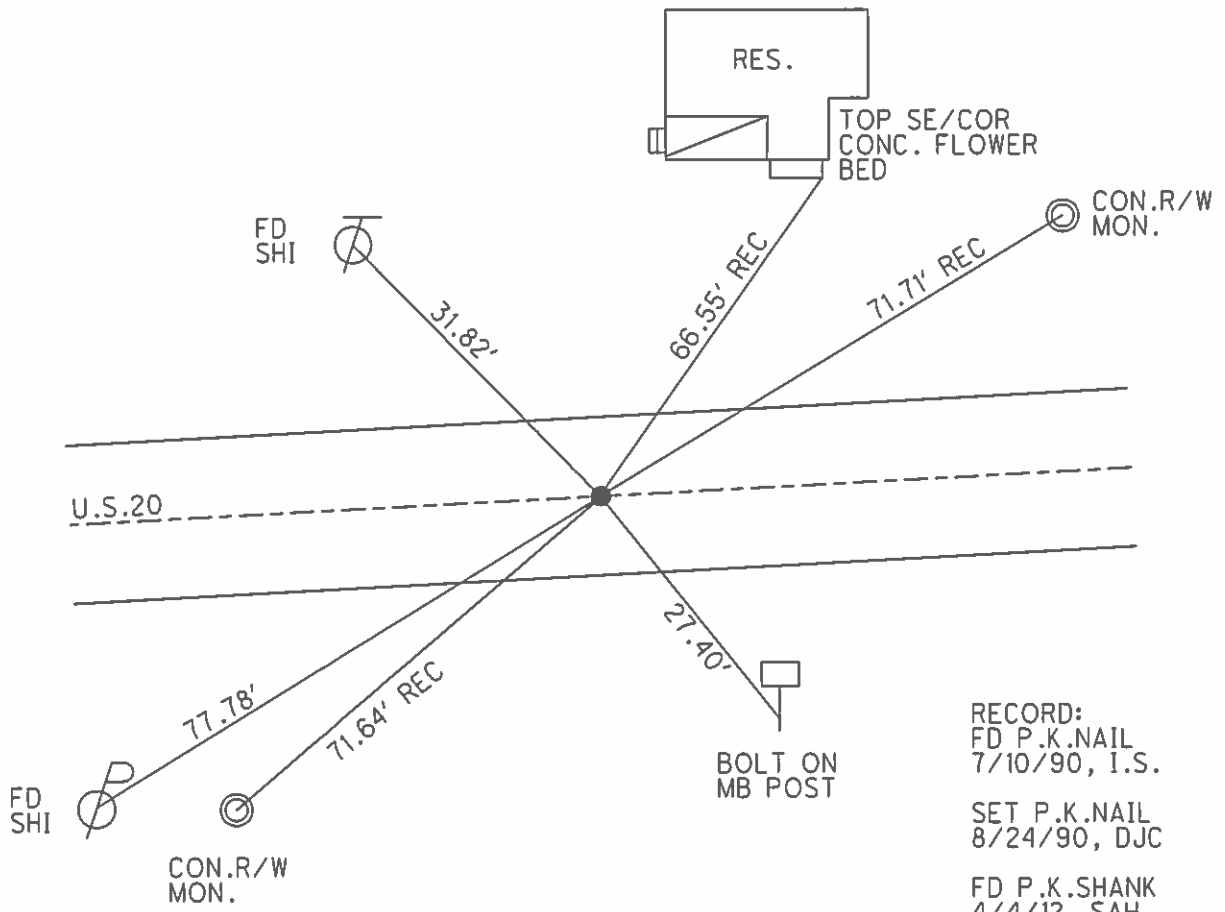
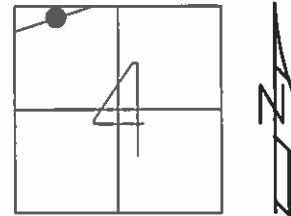


O.D.O.T. DISTRICT 2 SURVEY OFFICE (USE ONLY)

PERSONNEL \_\_\_\_\_ REFERENCE NO. 4 SHEET 9 OF 38  
 NOTES RHOADES DATE 5/1/13 ROUTE US 20  
 H.C. CODER WEATHER CLEAR COUNTY WILLIAMS  
 R.C. LAU TEMP. 74° TOWNSHIP NORTHWEST  
 \_\_\_\_\_ SECTION 4  
 \_\_\_\_\_ T 10 S R 4 W

TYPE MONUMENT P.K.SHANK  
 ON SURFACE - ~~BELOW~~ ON \_\_\_\_\_  
 LEFT - C PAV'T - ~~RIGHT~~ \_\_\_\_\_  
 \_\_\_\_\_ TO \_\_\_\_\_ EDGE PAVEMENT  
 S.L.M. 71+37.86

GRID: NORTHING: 725223.217 EASTING: 1349057.271



RECORD:  
 FD P.K.NAIL  
 7/10/90, I.S.

SET P.K.NAIL  
 8/24/90, DJC

FD P.K.SHANK  
 4/4/12, SAH

SET MAG/WASHER  
 GPS, REF4  
 7/16/14, EBW