

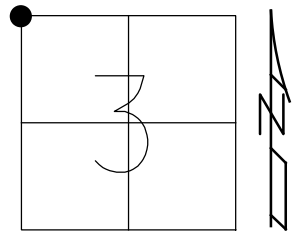
O.D.O.T. DISTRICT 2 SURVEY OFFICE (USE ONLY)

PERSONNEL \_\_\_\_\_ REFERENCE NO. 7 SHEET 13 OF 38

NOTES RHOADES DATE 5/1/13 ROUTE US 20  
 H.C. CODER WEATHER CLEAR COUNTY WILLIAMS  
 R.C. LAU TEMP. 74° TOWNSHIP NORTHWEST  
 SECTION 3

DWG BY WHITAKER PID 98653 T 10 N R 4 E

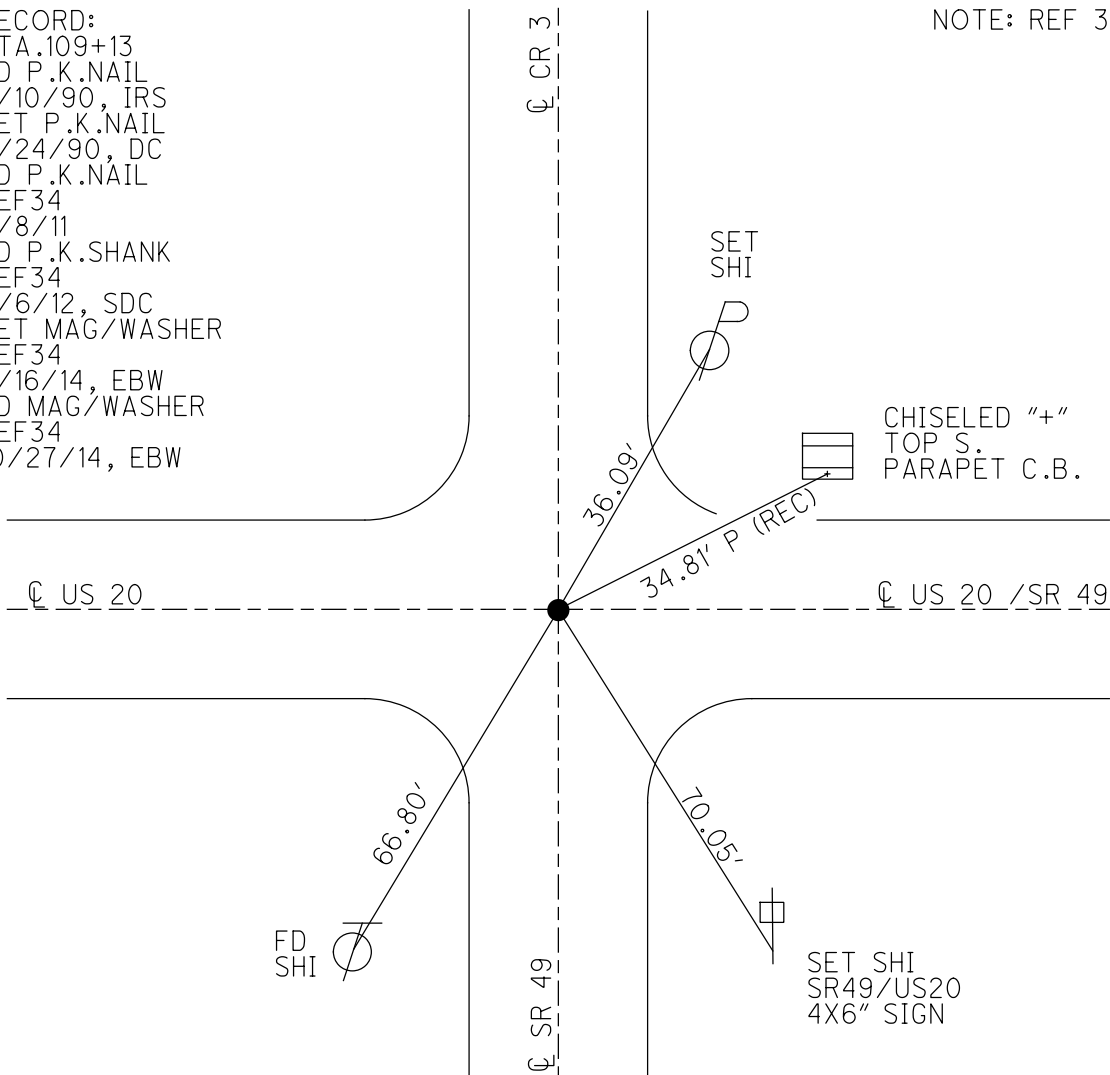
TYPE MONUMENT P.K. NAIL  
 ON SURFACE - ~~BELOW~~ ON  
 OFFSET ☐ PAVEMENT ON LT : RT  
- TO - EDGE PAVEMENT



STATION: 108+24  
 HORZ. DATUM: NAD83 2011 GEOID: NAVD88 2012A  
 GRID: NORTHING: 725223.260 EASTING: 1349057.210

RECORD:  
 STA. 109+13  
 FD P.K. NAIL  
 7/10/90, IRS  
 SET P.K. NAIL  
 8/24/90, DC  
 FD P.K. NAIL  
 REF 34  
 2/8/11  
 FD P.K. SHANK  
 REF 34  
 4/6/12, SDC  
 SET MAG/WASHER  
 REF 34  
 7/16/14, EBW  
 FD MAG/WASHER  
 REF 34  
 10/27/14, EBW

NOTE: REF 34 SR 49



CHISELED "+"  
 TOP S.  
 PARAPET C.B.

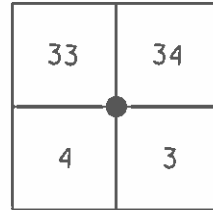
SET SHI  
 SR49/US20  
 4X6" SIGN

**O.D.O.T. DISTRICT 2 SURVEY OFFICE (USE ONLY)**

PERSONNEL \_\_\_\_\_ REFERENCE NO. 7 SHEET 13 OF 38

NOTES RHOADES \_\_\_\_\_ DATE 5/1/13 ROUTE US 20  
 H.C. CODER \_\_\_\_\_ WEATHER CLEAR COUNTY WILLIAMS  
 R.C. LAU \_\_\_\_\_ TEMP. 74° TOWNSHIP NORTHWEST  
 \_\_\_\_\_ SECTION 3-4-33-34  
 \_\_\_\_\_ T 9 S R 4 W

TYPE MONUMENT P.K.SHANK  
 ON SURFACE - ~~BELOW~~ ON  
 LEFT - C PAV'T - RIGHT ON  
 - TO - EDGE PAVEMENT  
 S.L.M. 109+11.11



GRID: NORTHING: 725223.217 EASTING: 1349057.271

RECORD:  
 FD P.K.NAIL  
 7/10/90, I.S.

SET P.K.NAIL  
 8/24/90, DJC

FD P.K.SHANK  
 4/6/12, SAH

SET MAG/WASHER  
 GPS, REF7  
 7/16/14, EBW

