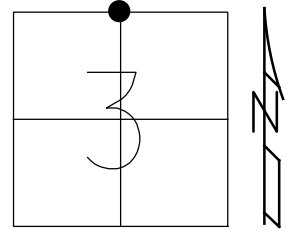


O.D.O.T. DISTRICT 2 SURVEY OFFICE (USE ONLY)

PERSONNEL _____ REFERENCE NO. 8 SHEET 14 OF 38
 NOTES RHOADES DATE 5/1/13 ROUTE SR 49
 H.C. CODER WEATHER CLEAR COUNTY WILLIAMS
 R.C. LAU TEMP. 74° TOWNSHIP NORTHWEST
 DWG BY WHITAKER PID 98653 SECTION 3
 T 10 N R 4 E

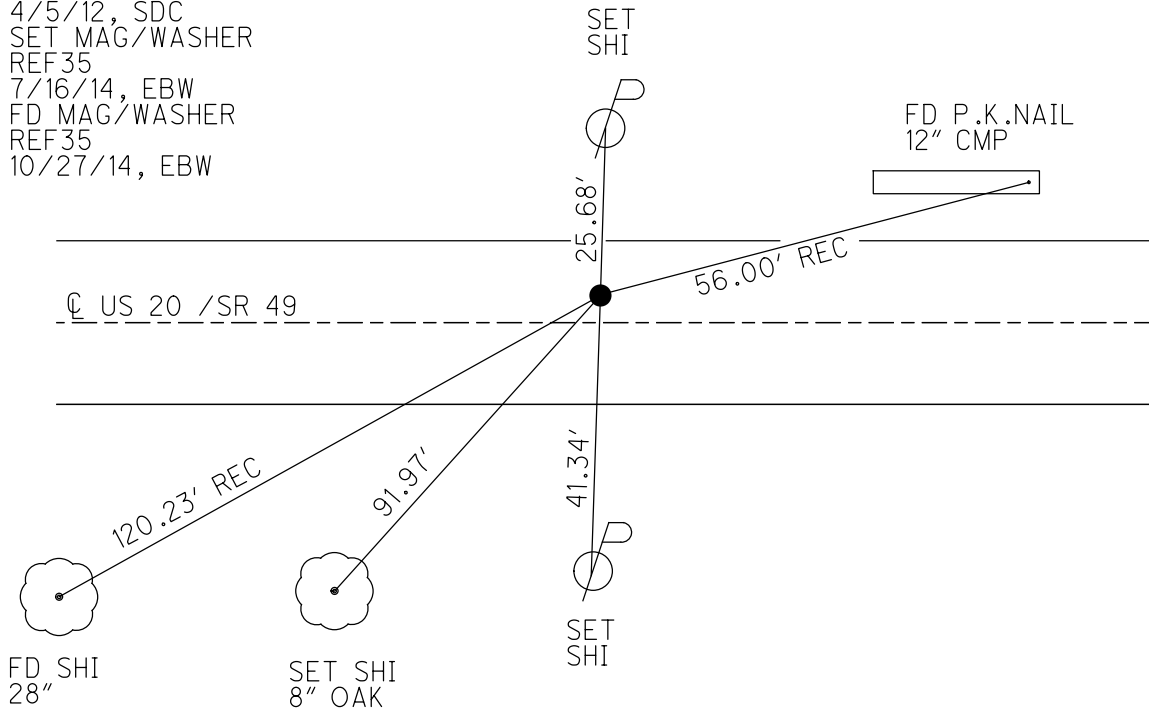
TYPE MONUMENT P.K. NAIL
 ON SURFACE - ~~BELOW~~ ON _____
 OFFSET ☐ PAVEMENT 4.2' LT : ~~RT~~
 _____ TO _____ EDGE PAVEMENT
 STATION: 134+59.82



HORZ. DATUM: NAD83 2011 GEOID: NAVD88 2012A
 GRID: NORTHING: 725199.861 EASTING: 1351692.925

RECORD:
 STA. 135+49
 FD P.K. NAIL
 7/10/90, IRS
 SET P.K. NAIL
 8/24/90, DC
 FD P.K. NAIL
 REF35
 4/5/12, SDC
 SET MAG/WASHER
 REF35
 7/16/14, EBW
 FD MAG/WASHER
 REF35
 10/27/14, EBW

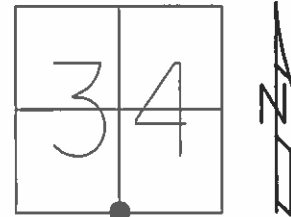
NOTE: REF 35 SR 49



O.D.O.T. DISTRICT 2 SURVEY OFFICE (USE ONLY)

PERSONNEL _____ REFERENCE NO. 8 SHEET 14 OF 38
 NOTES RHOADES _____ DATE 5/1/13 ROUTE US 20
 H.C. CODER _____ WEATHER CLEAR COUNTY WILLIAMS
 R.C. LAU _____ TEMP. 74° TOWNSHIP NORTHWEST
 _____ SECTION 34
 _____ T 9 S R 4 W

TYPE MONUMENT P.K.NAIL
 ON SURFACE - ~~BELOW~~ ON _____
 LEFT - C PAV'T - ~~RIGHT~~ 4.2'
 - TO - EDGE PAVEMENT
 S.L.M. 135+46.89
 GRID: NORTHING: 725199.834 EASTING: 1351692.999



RECORD:
 FD P.K.NAIL
 7/10/90, I.S.

SET P.K.NAIL
 8/24/90, DJC

FD P.K.NAIL
 4/6/12, SAH

SET MAG/WASHER
 GPS, REF8
 7/16/14, EBW

