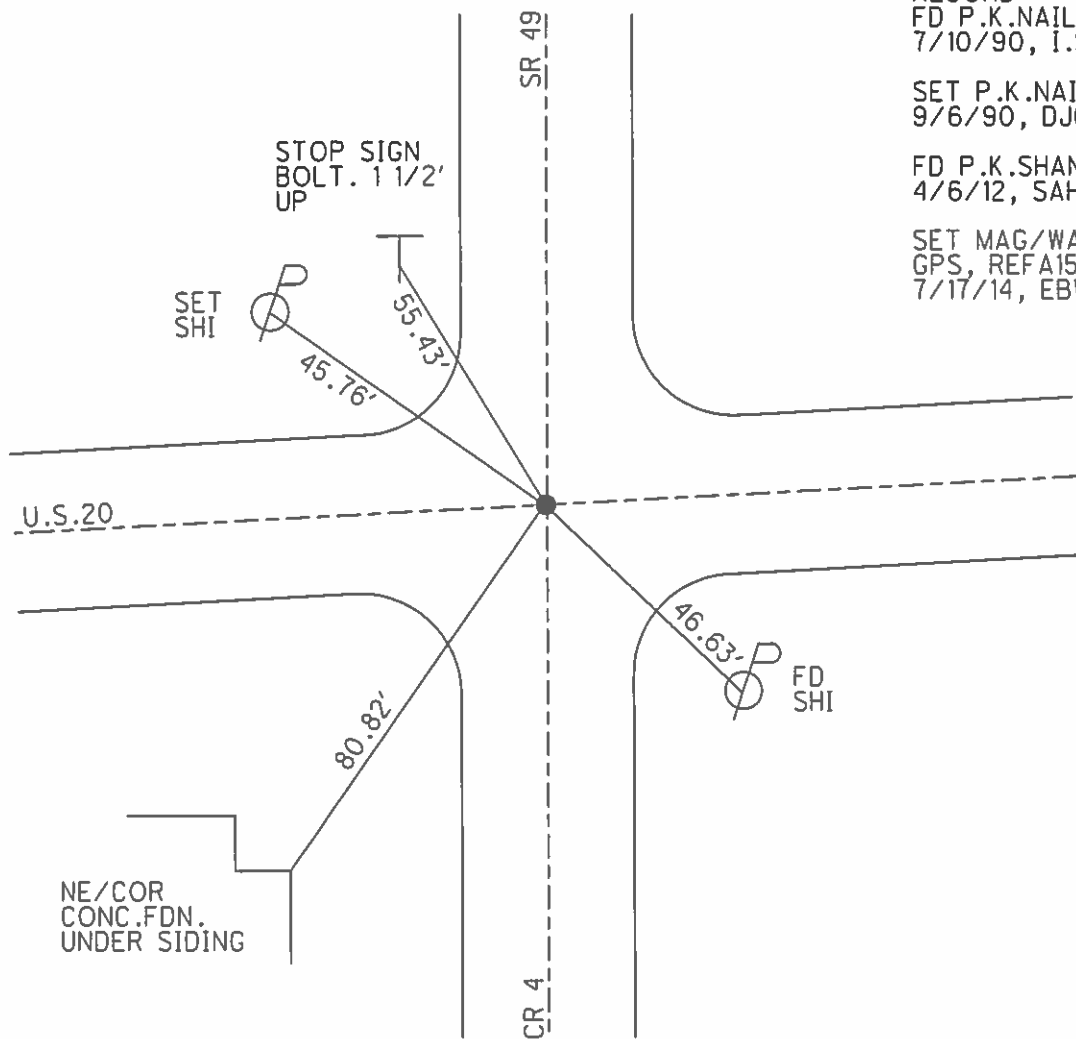
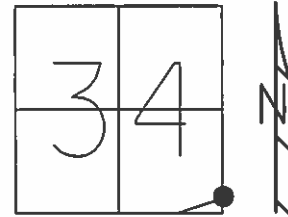


O.D.O.T. DISTRICT 2 SURVEY OFFICE (USE ONLY)

PERSONNEL \_\_\_\_\_ REFERENCE NO. 15 A SHEET 16 OF 38  
 NOTES RHOADES DATE 5/1/13 ROUTE US 20  
 H.C. CODER WEATHER CLEAR COUNTY WILLIAMS  
 R.C. LAU TEMP. 74° TOWNSHIP NORTHWEST  
 SECTION 34  
 T 9 S R 4 W

TYPE MONUMENT P.K.SHANK  
 ON SURFACE - BELOW ON  
 LEFT - Q PAV'T - RIGHT 0.4'  
 - TO - EDGE PAVEMENT  
 S.L.M. 162+20.65  
 GRID: NORTHING: 725460.532 EASTING: 1354333.282



RECORD:  
 FD P.K.NAIL  
 7/10/90, I.S.

SET P.K.NAIL  
 9/6/90, DJC

FD P.K.SHANK  
 4/6/12, SAH

SET MAG/WASHER  
 GPS, REFA15  
 7/17/14, EBW