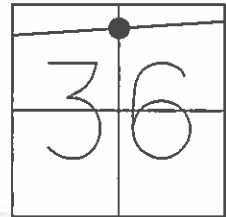


O.D.O.T. DISTRICT 2 SURVEY OFFICE (USE ONLY)

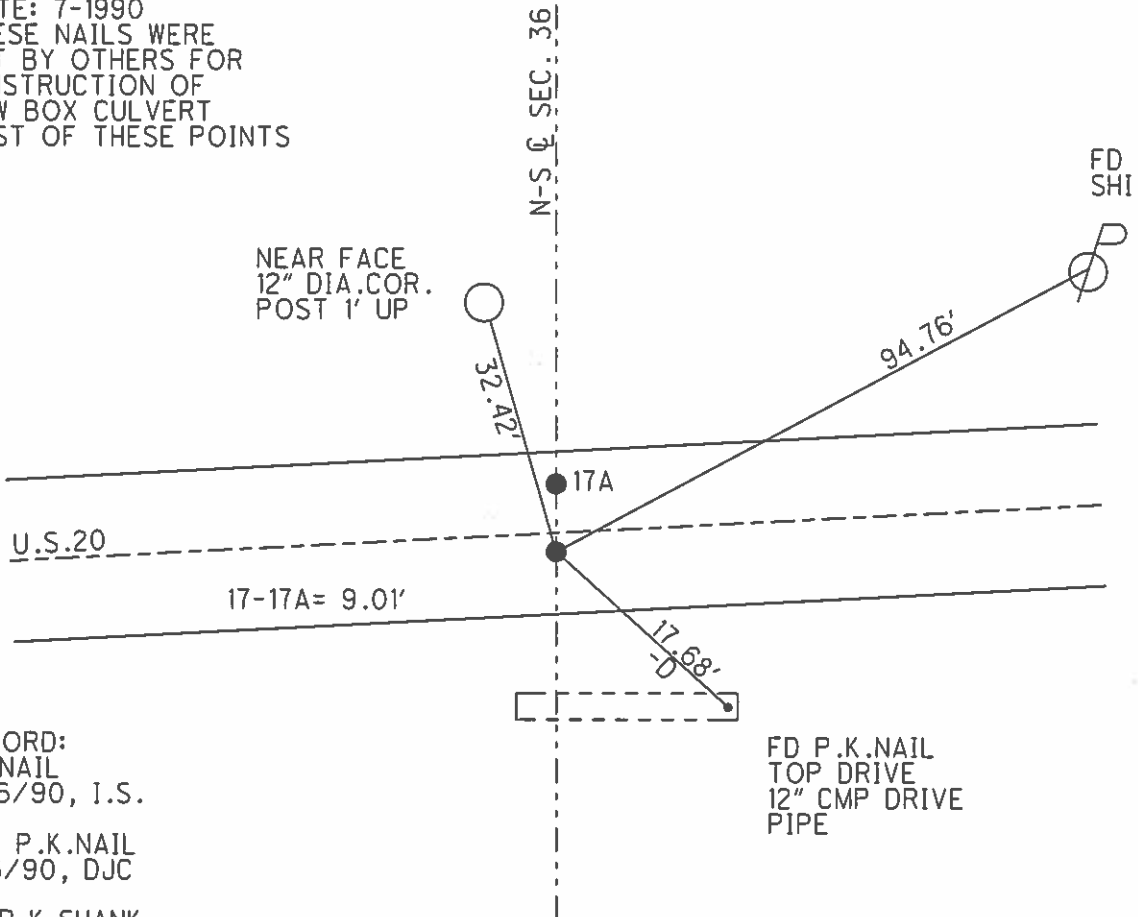
PERSONNEL	REFERENCE NO.	<u>17</u>	SHEET	<u>19</u>	OF	<u>38</u>
NOTES	RHOADES	DATE	<u>5/1/13</u>	ROUTE	<u>US 20</u>	
H.C.	<u>CODER</u>	WEATHER	<u>CLEAR</u>	COUNTY	<u>WILLIAMS</u>	
R.C.	<u>LAU</u>	TEMP.	<u>74°</u>	TOWNSHIP	<u>NORTHWEST</u>	
				SECTION	<u>36</u>	
				T	<u>9</u>	R
				S	<u>4</u>	W

TYPE MONUMENT P.K.SHANK  
 ON SURFACE - ~~BELOW~~ ON \_\_\_\_\_  
~~LEFT~~ - CL PAV'T - RIGHT 2.6'  
 - TO - EDGE PAVEMENT  
 S.L.M. 242+75.32



GRID: NORTHING: 726516.598 EASTING: 1362276.221

NOTE: 7-1990  
 THESE NAILS WERE  
 SET BY OTHERS FOR  
 CONSTRUCTION OF  
 NEW BOX CULVERT  
 WEST OF THESE POINTS



RECORD:  
 FD NAIL  
 7/16/90, I.S.

SET P.K.NAIL  
 9/6/90, DJC

FD P.K.SHANK  
 4/6/12, SAH

SET MAG/WASHER  
 7/15/14, JLL  
 GPS, REF17  
 7/17/14, EBW

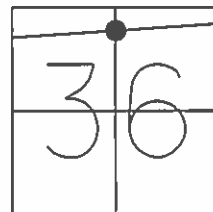
FD P.K.NAIL  
 TOP DRIVE  
 12" CMP DRIVE  
 PIPE

O.D.O.T. DISTRICT 2 SURVEY OFFICE (USE ONLY)

PERSONNEL \_\_\_\_\_ REFERENCE NO. 17 SHEET 19 OF 38

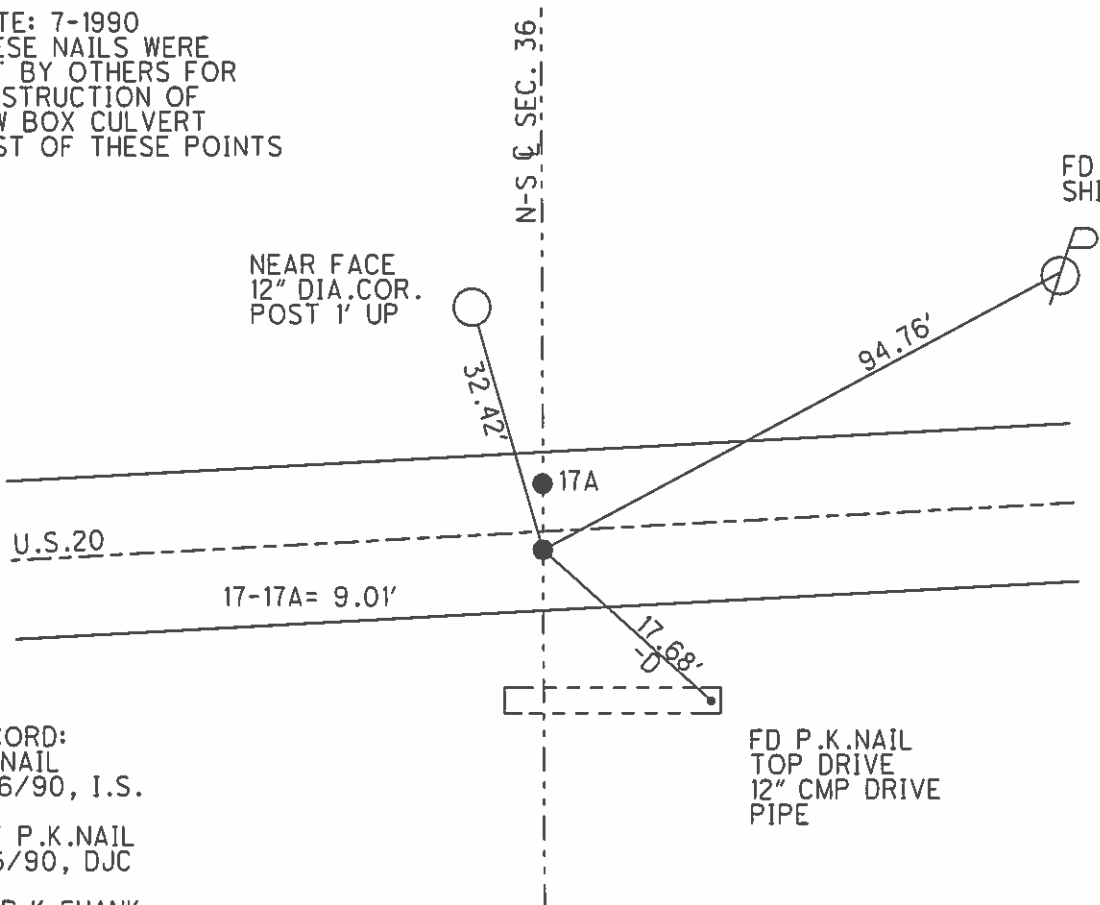
NOTES RHOADES \_\_\_\_\_ DATE 5/1/13 ROUTE US 20  
 H.C. CODER \_\_\_\_\_ WEATHER CLEAR COUNTY WILLIAMS  
 R.C. LAU \_\_\_\_\_ TEMP. 74° TOWNSHIP NORTHWEST  
 \_\_\_\_\_ SECTION 36  
 \_\_\_\_\_ T 9 S R 4 W

TYPE MONUMENT P.K.SHANK  
 ON SURFACE - ~~BELOW~~ ON \_\_\_\_\_  
~~LEFT~~ - Q PAV'T - RIGHT 2.6'  
 - TO - EDGE PAVEMENT  
 S.L.M. 242+75.32



GRID: NORTHING: 726516.598 EASTING: 1362276.221

NOTE: 7-1990  
 THESE NAILS WERE  
 SET BY OTHERS FOR  
 CONSTRUCTION OF  
 NEW BOX CULVERT  
 WEST OF THESE POINTS



RECORD:  
 FD NAIL  
 7/16/90, I.S.

SET P.K.NAIL  
 9/6/90, DJC

FD P.K.SHANK  
 4/6/12, SAH

SET MAG/WASHER  
 7/15/14, JLL  
 GPS, REF17  
 7/17/14, EBW

FD P.K.NAIL  
 TOP DRIVE  
 12" CMP DRIVE  
 PIPE