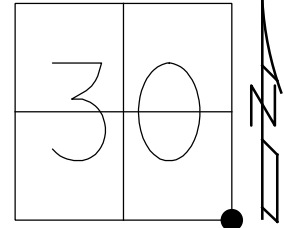


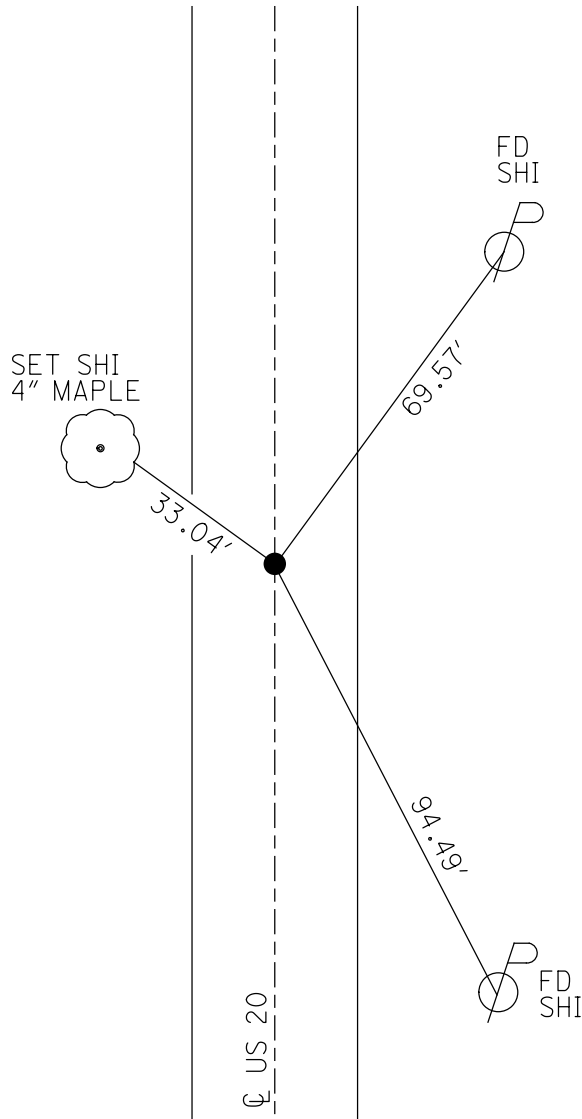
O.D.O.T. DISTRICT 2 SURVEY OFFICE (USE ONLY)

PERSONNEL _____ REFERENCE NO. 35 SHEET 1 OF 24
 NOTES POORE DATE 7-25-17 ROUTE US 20
 H.C. LEU WEATHER SUNNY COUNTY WILLIAMS
 R.C. CARSON TEMP. 68° F TOWNSHIP BRIDGEWATER
 _____ HOMAN _____ SECTION 30
 _____ T 9 S R 2 W

TYPE MONUMENT P.K./WASHER
~~ON SURFACE~~ - BELOW 1 1/2"
 LEFT - ☉ PAV'T - RIGHT ON
12.3' TO RT EDGE PAVEMENT
 S.L.M. 665+97.49
 Grid: Northing: 729706.240 Easting: 1402067.556



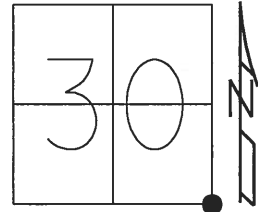
RECORD: P.I.
 STA 30+79.8
 $\Delta = 0^\circ-12'$ LT. (R)
 $\Delta = 0^\circ-09'-18''$ LT. (M)
 SET SM.R.R.SPIKE
 8-31-88, IRS
 FD SM.R.R.SPIKE
 5/4/98, SAH
 SET P.K./WASHER
 11-12-98, SAH
 FD P.K./WASHER
 7/21/05, MB
 FD P.K./WASHER
 5" DOWN
 REF 35
 5/24/16, DCH
 SET MAG/WASHER
 NEWREF 35
 9/18/17, JLL
 FD MAG/WASHER
 REF 35
 12/19/18, JLL



O.D.O.T. DISTRICT 2 SURVEY OFFICE (USE ONLY)

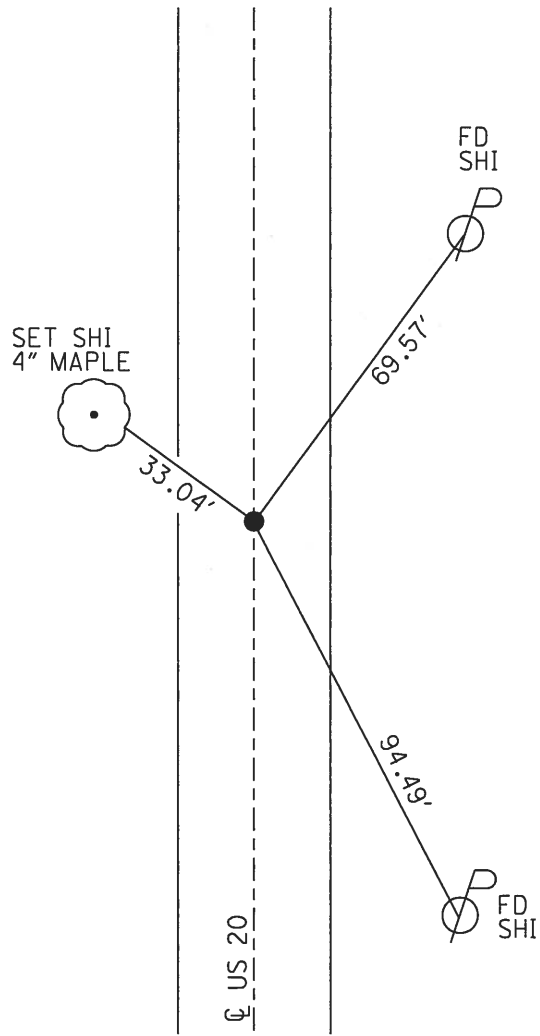
PERSONNEL	REFERENCE NO.	35	SHEET	1	OF	24
NOTES	POORE	DATE	7-25-17	ROUTE	US 20	
H.C.	LEU	WEATHER	SUNNY	COUNTY	WILLIAMS	
R.C.	CARSON	TEMP.	68° F	TOWNSHIP	BRIDGEWATER	
	HOMAN			SECTION	30	
				T	9	S
				R	2	W

TYPE MONUMENT P.K./WASHER
~~ON SURFACE~~ - BELOW 1 1/2"
 LEFT - ☉ PAV'T - RIGHT ON
12.3' TO RT EDGE PAVEMENT
 S.L.M. 665+97.49



Grid: Northing: 729706.243 Easting: 1402067.569

RECORD: P.I.
 STA 30+79.8
 Δ = 0°-12' LT. (R)
 Δ = 0°-09'-18" LT. (M)
 SET SM.R.R.SPIKE
 8-31-88, IRS
 FD SM.R.R.SPIKE
 5/4/98, SAH
 SET P.K./WASHER
 11-12-98, SAH
 FD P.K./WASHER
 7/21/05, MB
 FD P.K./WASHER
 5" DOWN
 REF35
 5/24/16, DCH
 SET MAG/WASHER
 NEWREF 35
 9/18/17, JLL



O.D.O.T. DISTRICT 2 SURVEY OFFICE

PERSONNEL

REFERENCE NO. 35

SHEET 2 OF 10

NOTES S. Huss

H.C. B. VanRusen

R.C. S. Huss

DATE 5-4-98

WEATHER Cldy - Sprinkles

TEMP. +58°F

ROUTE US-20

COUNTY Williams

TOWNSHIP Bridgewater

SECTION 30

T 9 S R 2 W

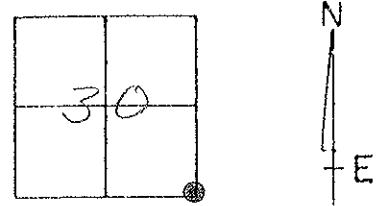
TYPE MONUMENT SMALL RR. SPK

ON SURFACE - ~~BELOW~~ YES

(LEFT ~~PAV'T.~~ - RIGHT 1.0 LT.

12.6' TO RT EDGE PAVEMENT

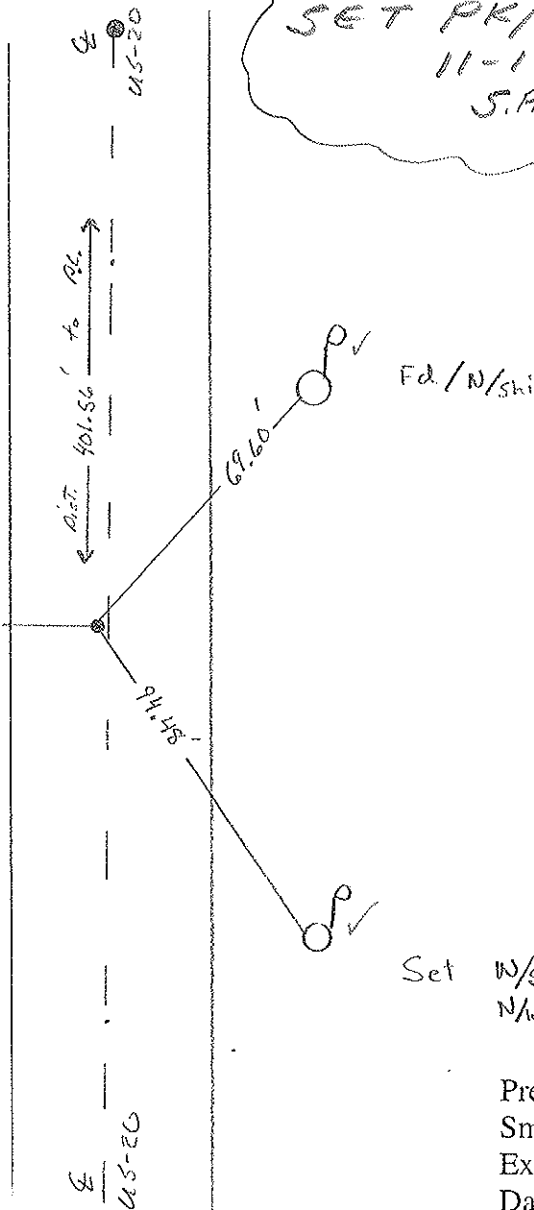
S.L.M. ~~668+79~~ 663+97



Record
Set Small RR/spk.
8-31-88 JRS

SET PK/WASHER
11-12-98
S.A.H.

Set N/shi
in 32" Elm

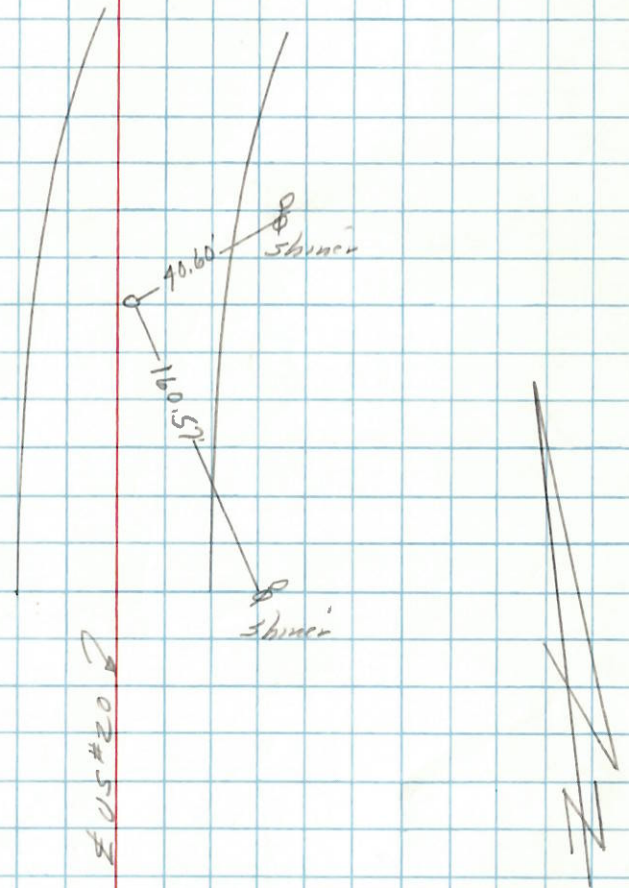


Preventive Maintenance
Smooth Seal 2005
Exist. Point Uncovered
Date 7/21/05 M.B.

PERSONNEL	TITLE	PERSONNEL	TITLE	COUNTY	DATE
Stanc				Williams	28 Sept. 77
E				S. R. US#20	WEATHER Fair
Crew				SEC. SR#20-A North	TEMP. 65°
DESCRIPTION				Retruners to Control Points	
LEFT		CENTER LINE		RIGHT	

35A

Ed. PK Nail
 P.C. to curve N. of
 SR#20-A.
 401.56- S. to Sec. Cor
 12.4' - to E. edge pt.
 11.8' - to W. edge pt.
 1.70 - W. to other PK



35

Ed. PK Nail
 Sec. Cor. $\frac{30}{31} \frac{29}{32}$
 Madison Twp. Ed 35.44'
 11.5' - to W. edge pt. Shiner in
 12.6' - to E. edge pt. 24" Tree

