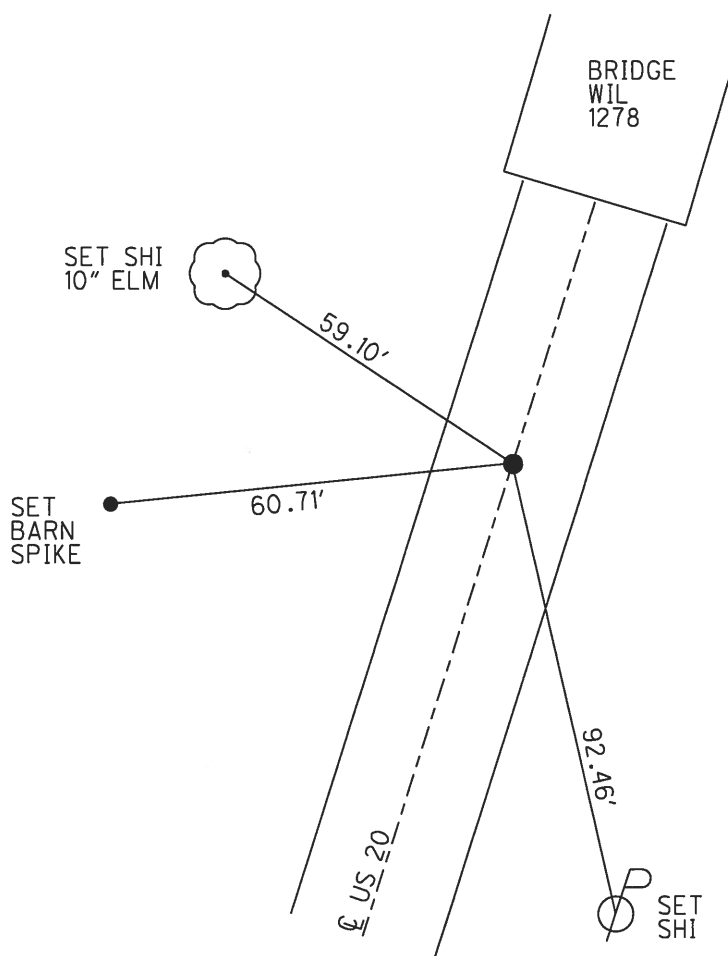
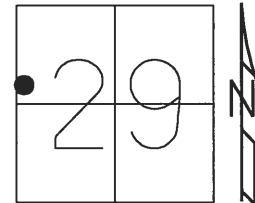


O.D.O.T. DISTRICT 2 SURVEY OFFICE (USE ONLY)

PERSONNEL _____ REFERENCE NO. 35 B SHEET 4 OF 24
 NOTES POORE DATE 7-25-17 ROUTE US 20
 H.C. LEU WEATHER SUNNY COUNTY WILLIAMS
 R.C. CARSON TEMP. 70°F TOWNSHIP MADISON
HOMAN SECTION 29
 T 9 S R 2 W

TYPE MONUMENT P.K./WASHER
~~ON SURFACE~~ - BELOW 1 1/2"
 LEFT - ☉ PAV'T - RIGHT ON
12.9' TO RT EDGE PAVEMENT
 S.L.M. 674+44.12

Grid: Northing: 730547.389 Easting: 1402140.692



RECORD:
 SET SM.R.R.SPIKE
 8-31-88, IRS
 FD SM.R.R.SPIKE
 5/4/98, SAH
 SET P.K./WASHER
 11-12-98, BVD
 FD P.K./WASHER
 7/21/05, MB
 FD P.K./WASHER
 1 1/2" DOWN
 REF38
 5/24/16, DCH
 SET MAG/WASHER
 NEWREF38
 9-18-2017, JLL

O.D.O.T. DISTRICT 2 SURVEY OFFICE

PERSONNEL

REFERENCE NO. 35-8

SHEET 4 OF 16

NOTES Huss

H.C. Van Dusen

R.C. Huss

DATE 5-4-98

WEATHER Cldy - Sprinkles

TEMP. +58°F

ROUTE US-20

COUNTY Williams

TOWNSHIP Bridgewater

SECTION 29

T 9 S R 2 W

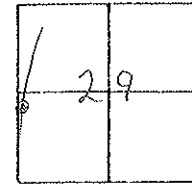
TYPE MONUMENT SMALL R.R. SPK.

ON SURFACE - ~~BELOW~~ YES

~~LEFT~~ - C. PAV'T - RIGHT YES

12.9' TO RT. EDGE PAVEMENT

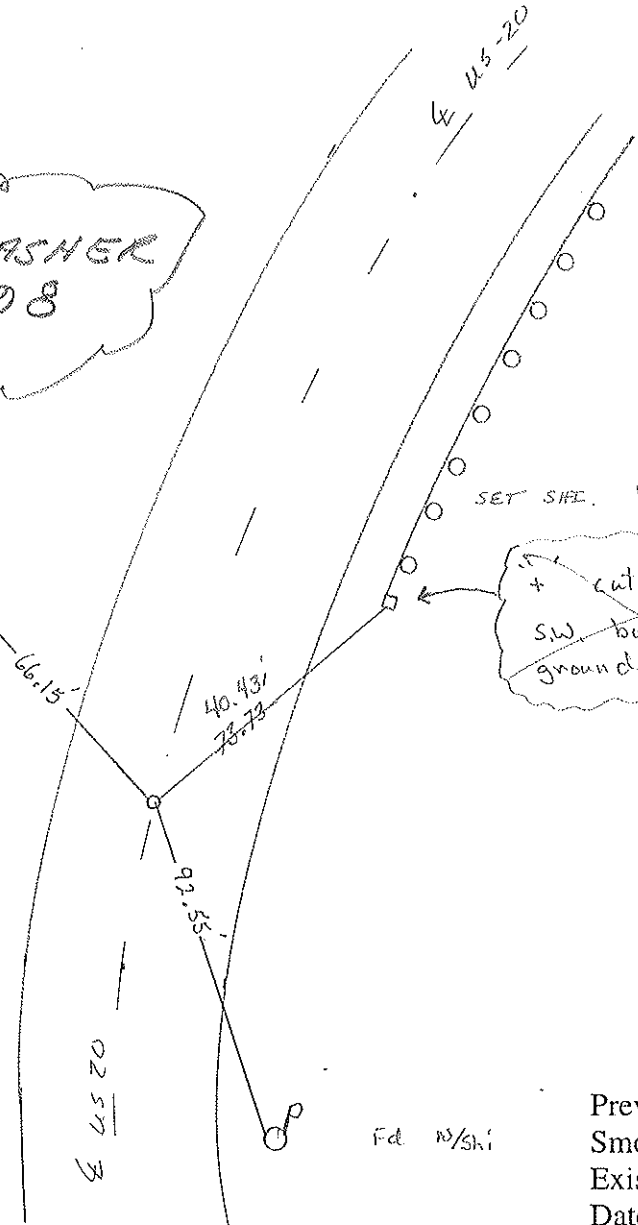
S.L.M. 673+42 672+41



Record
Set Small RR spk.
8-31-88 IRS

SET PK/WASHER
11-12-98
B.V.D.

Set N/shi
12" locust
S.E. 1/5



+ cut on top of
SW bolt for G.R.
ground assembly

Fd N/shi

Preventive Maintenance
Smooth Seal 2005
Exist. Point Uncovered
Date 7/21/05 M.B.

PERSONNEL	TITLE	PERSONNEL	TITLE	COUNTY	DATE	WEATHER	TEMP.
Signer				Williams	28 Sept. 77	Fair	65°
E				U.S.#20			
Crew				SEC. 20-A North			
DESCRIPTION				References to Control Points			JOB NO.
LEFT		CENTER LINE		RIGHT			

